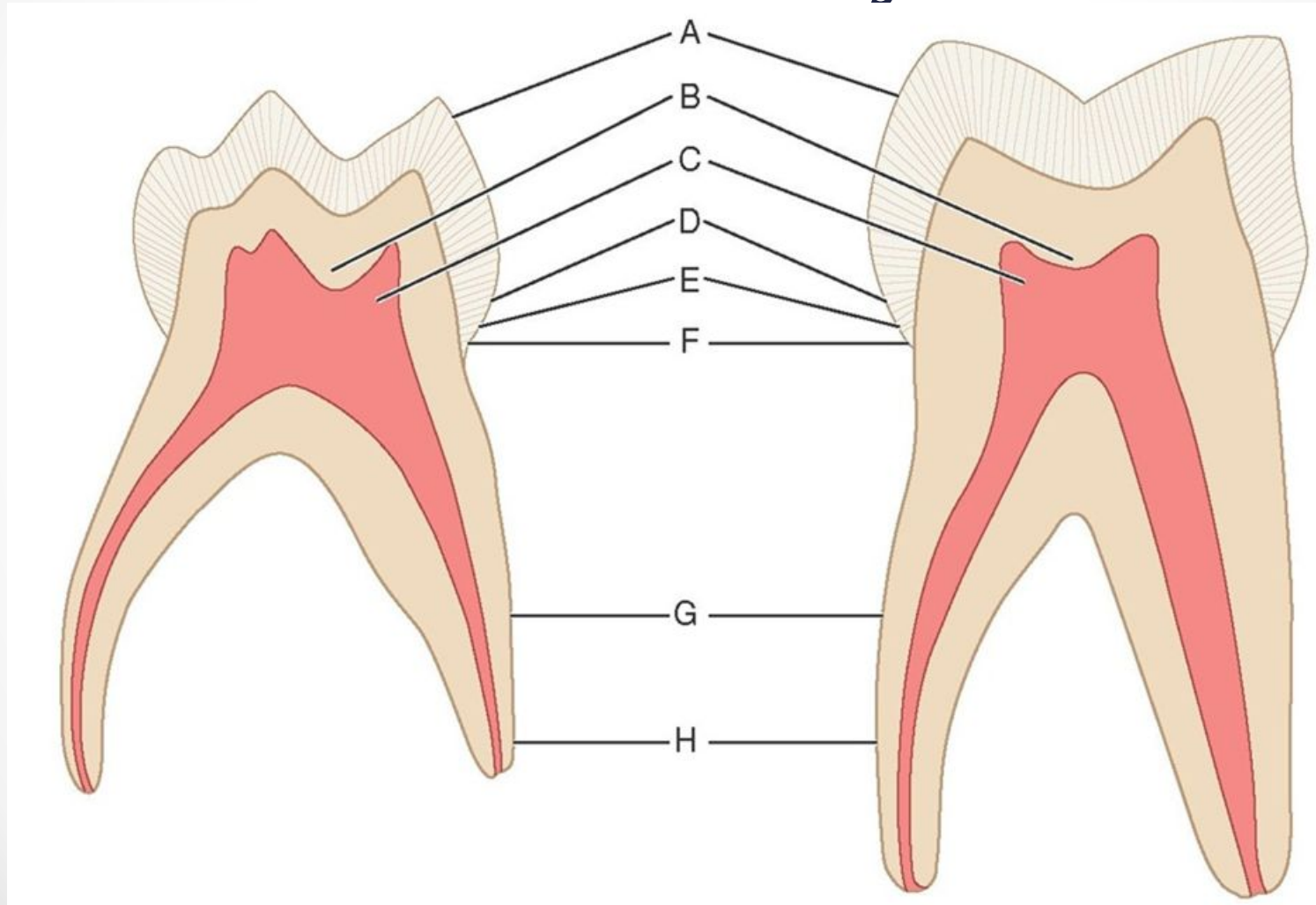


PREVENTIVE
PEDIATRIC
DENTISTRY

Why PD?



Anatomy



- Children's jaws have more active blood circulation than adult, what leads to fast *propagation* of infection.
- Also the reason of fast infection is large Havers's channels
- -red bone marrow, which is less resistant to the different irritations than yellow bone marrow (adults)
- Hard tissues of the deciduous tooth are very thin: enamel <1 mm
- Enamel has a lot of pores and cracks, so because of it enamel becomes very *permeable*
- Enamel of deciduous tooth is low- mineralized, what makes it looks whiter than permanent tooth enamel.

- Dentine also less mineralized, so it can't produce reparative dentine nearby pulp to protect pulp.
- Large and short Gaver's channels (in dentine) are the main reason of fast propagation of infection.
- Cavity of the deciduous tooth is bigger, than permanent has.
- □ Pulp chamber is larger too.
- Pulp's *horns* are high and *acute*

How do you think, what bad consequences might be?



Lack of prevention can leads to:

- early teeth loss,
- abnormal bite at the future,
- and as result it can leads to digestive disorders.

The main goal of
PREVENTIVE PD is to
keep baby teeth in safety



What is preventive dentistry includes?

- Brushing
- Flossing
- Dental education
- Fluorides
- Oral habits
- Orthodontics
- Proper diet
- Sealants
- Sport safety

Toothbrush



'usr787580



little-sun.ru



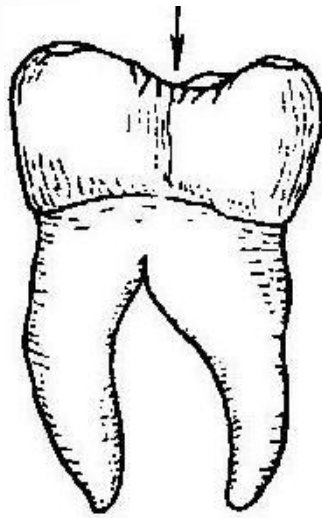
Toothpaste



3 general fluoride effects :

- 1. Fluoride promotes the remineralization of teeth;
- 2. Fluoride *increases* the resistance of tooth decay;
- 3. Fluoride reduces the release of acids by bacteria.

Sealing fissures



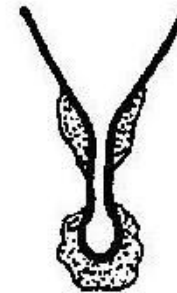
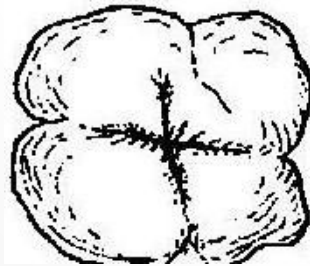
a

δ

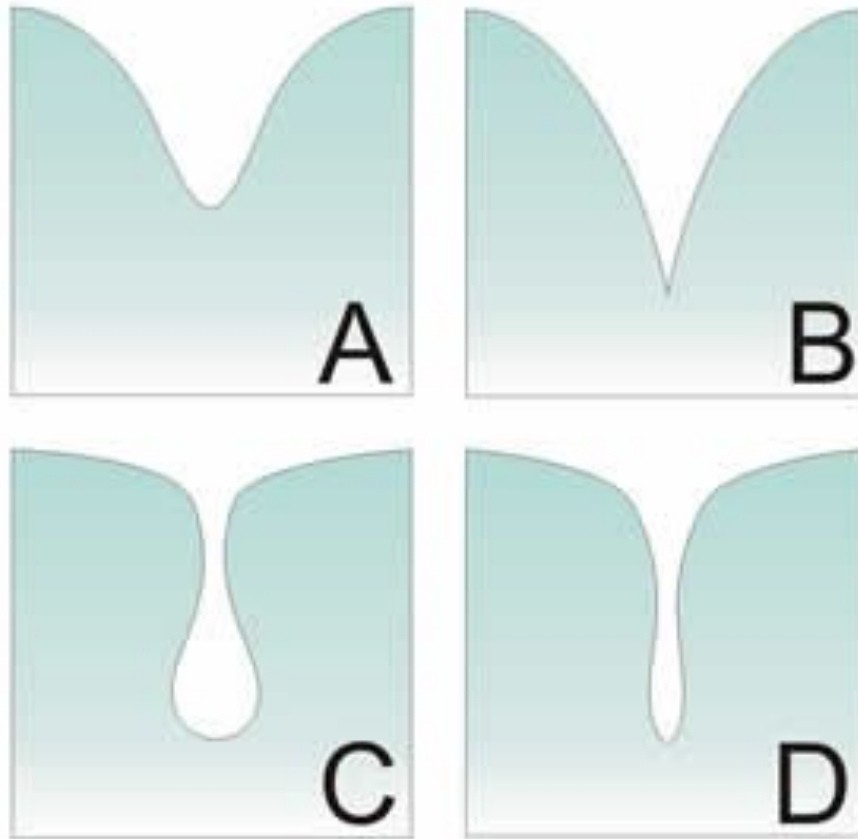


β

ε



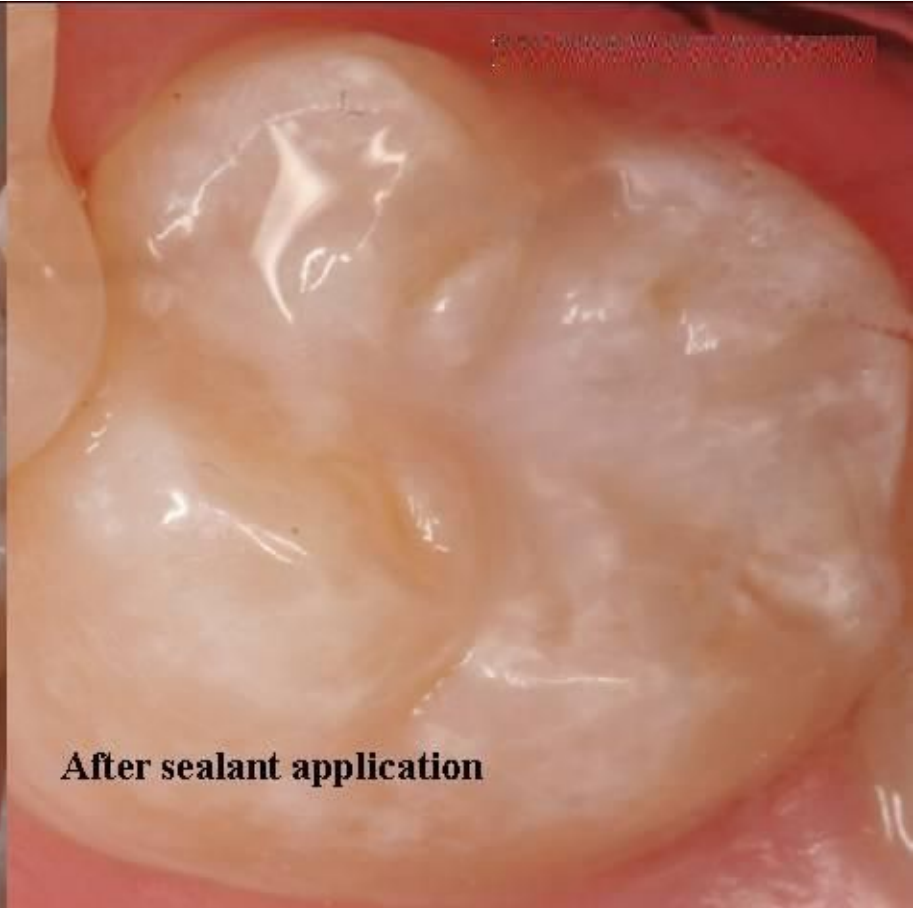
Types of fissures



© Ржанов Е.А.



Deep pits and fissures



After sealant application

Questions?



A group of Minions from the movie 'Despicable Me' are shown in a scene where they appear to be at a presentation or a performance. They have wide, surprised eyes and open mouths. The background is slightly blurred, showing other characters and a stage-like setting.

**THANKS FOR YOUR ATTENTION...
NOW YOU CAN CLAP...**

**IF YOU HAVE ANY QUESTIONS, MY
FRIEND GOOGLE WILL ANSWER THEM...**