

FELTING

Nosyreva Anastasia

Wool

Wool - the hairline of animals (sheep, goats, camels, etc.). Sheep's wool is used in mass production.

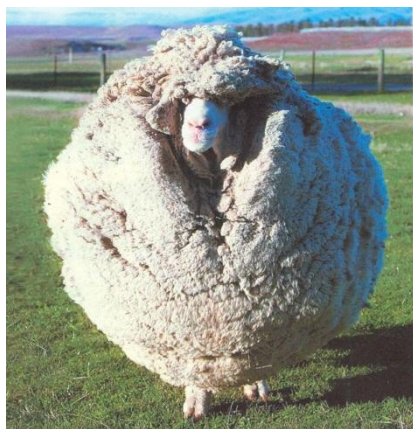


History

8,000 years ago, people discovered the ability of wool to fall off. They used the found remains of animal hair for felting. After the domestication of small cattle, people began to use sheared animal hair for making clothes.

The first felt workshops appeared in the 16th century. In the 19th century, people invented felting presses and felting machines. The felling occurred by squeezing and rolling the wool or by mechanical action of special needles that tangled the wool fibers.

Sheeps



Types of wool for felting

- Outer wool (used for felting coarse products, boots, bags, ankle boots)
- Sliver (combed fleece, unpainted, used for stuffing toys or the basis of products)
- Tow (small hairs, felting wool)
- Bleached (bleached wool)
- Camel
- Angora
- Alpaca

Sheep's wool

Outer wool



Sliver



Tow



Bleached





Technics

Dry felting

special needle with serrations of various sizes and thicknesses



Wet felting

felting with soap and warm water







Thanks for attention!

