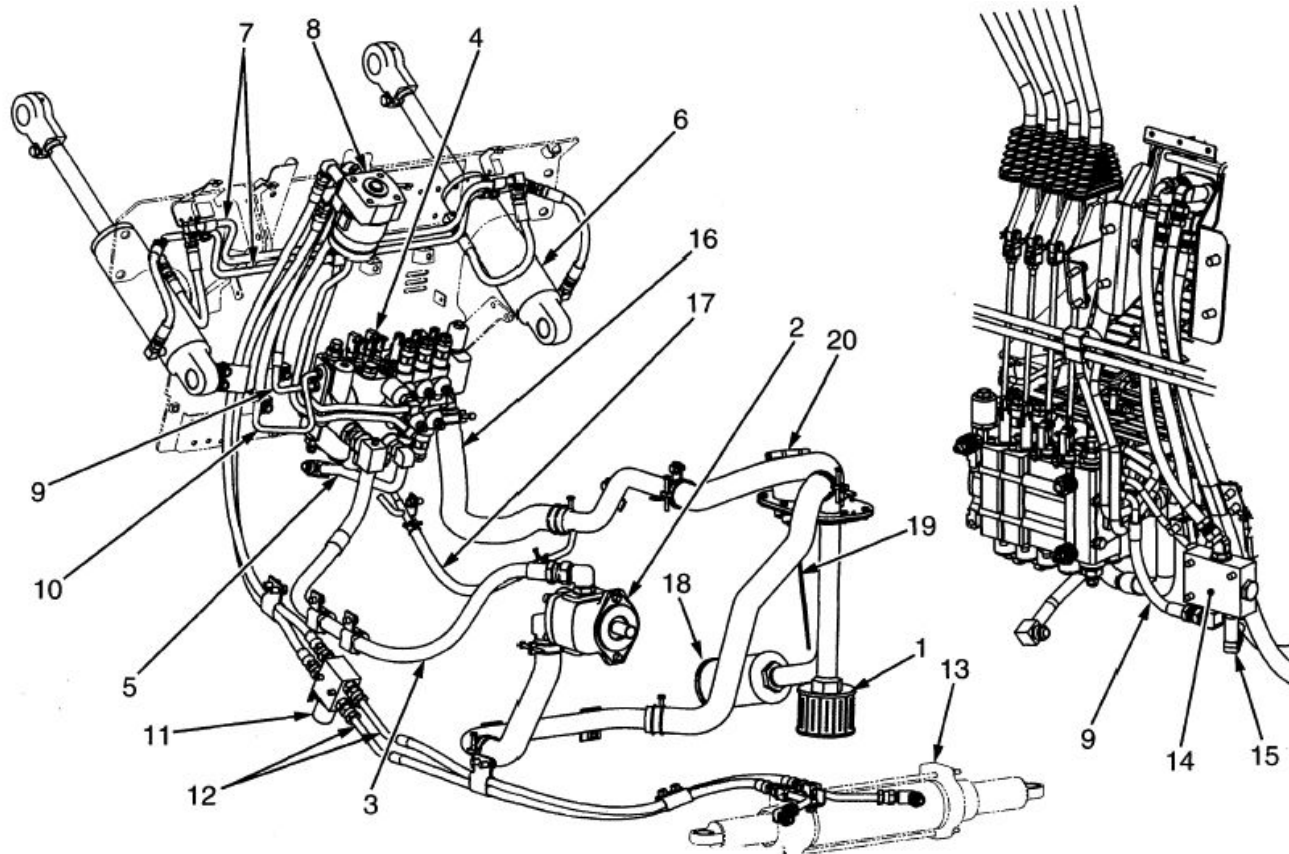


Hydraulic System

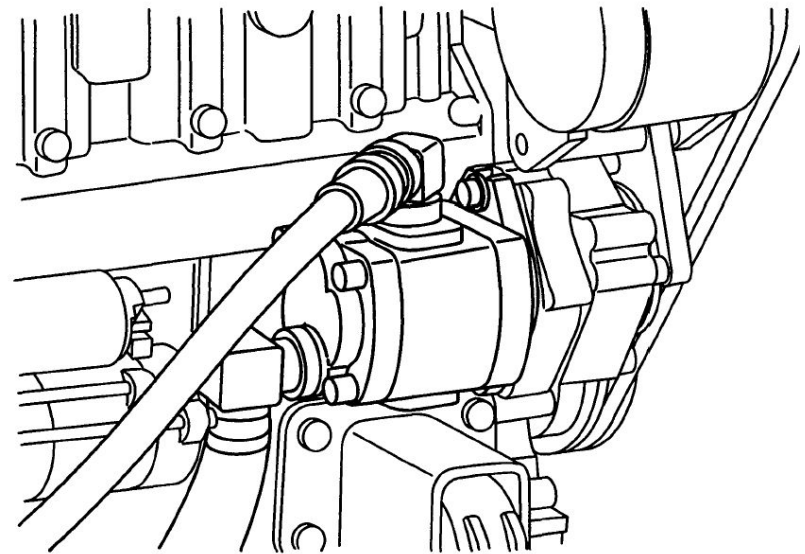
Media # 99719-15000

Schematic

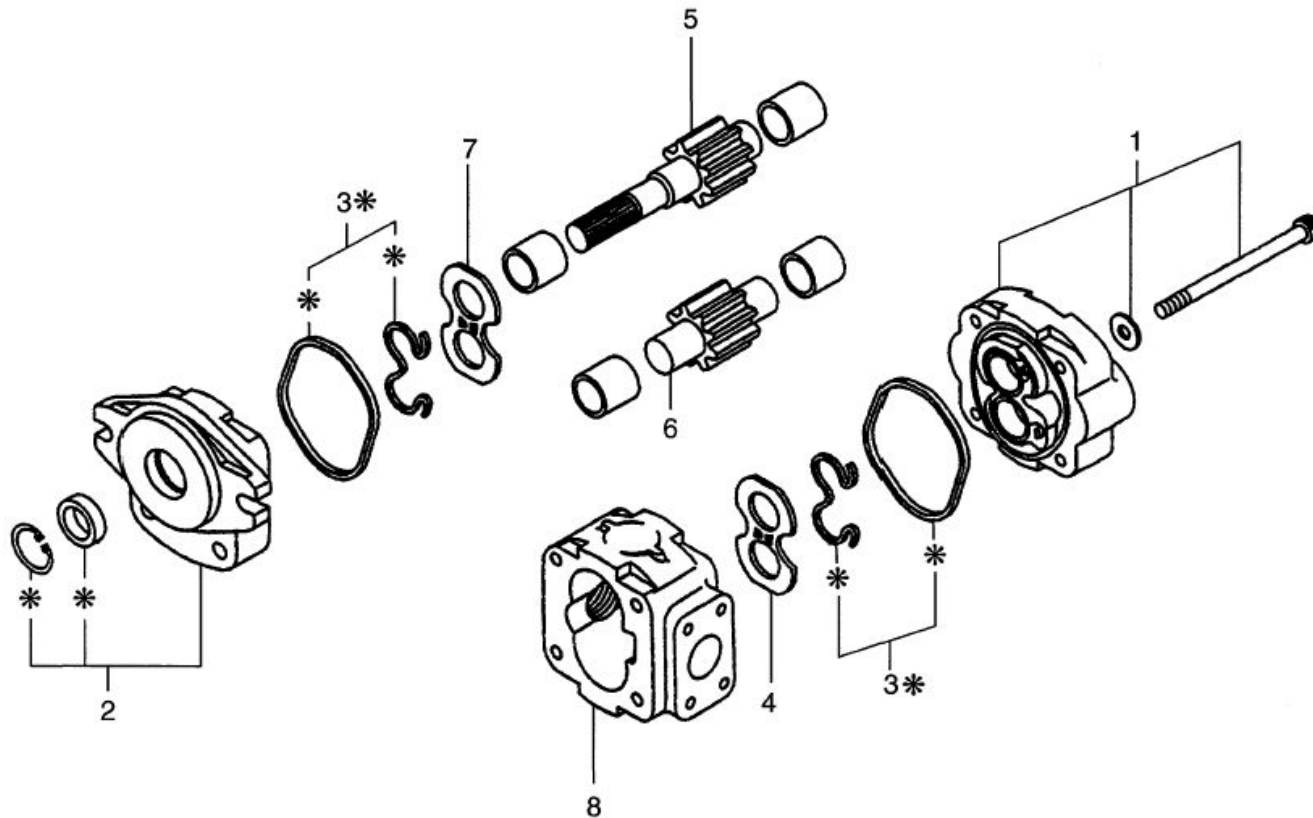


Pump

- The pump is mounted onto the side of the engine.

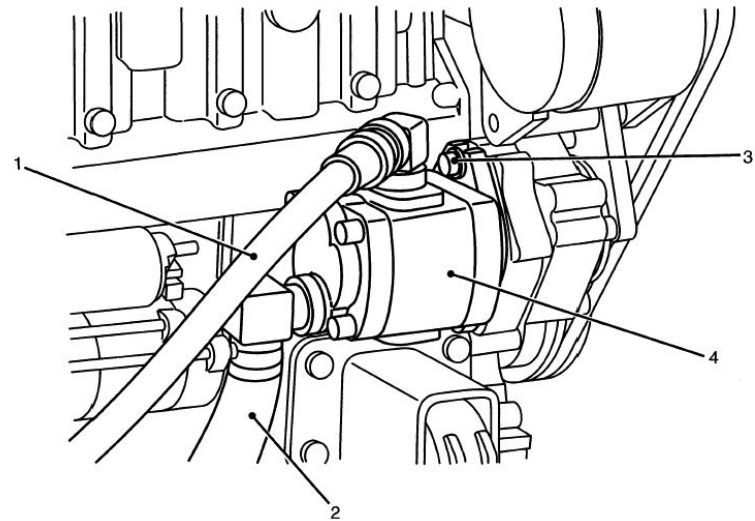


Pump Assembly

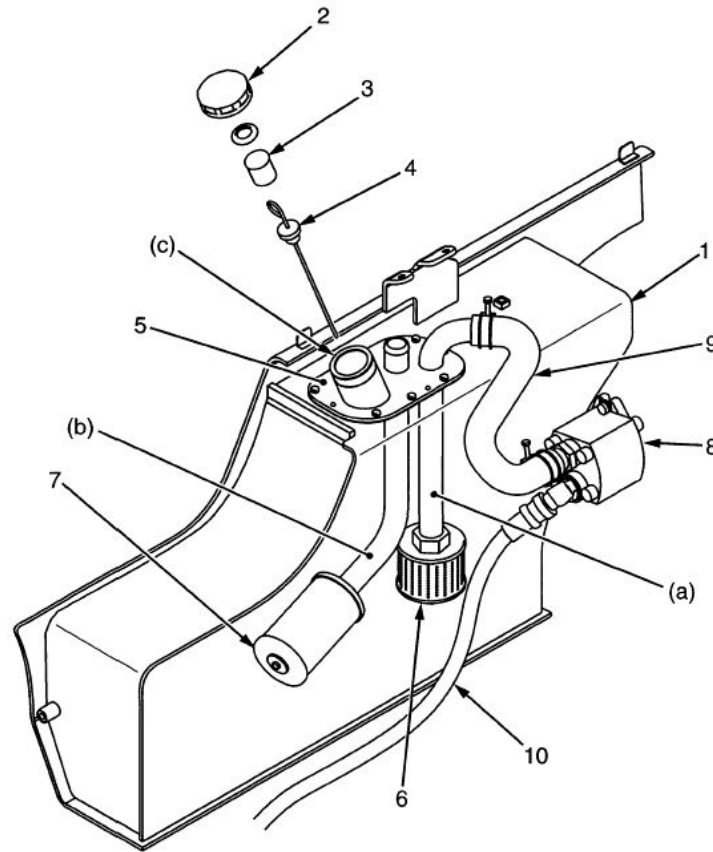


Pump Removal

- Sequence
 - 1 Pump delivery hose
 - 2 Pump suction hose
 - 3 Pump mounting bolt
 - 4 Pump



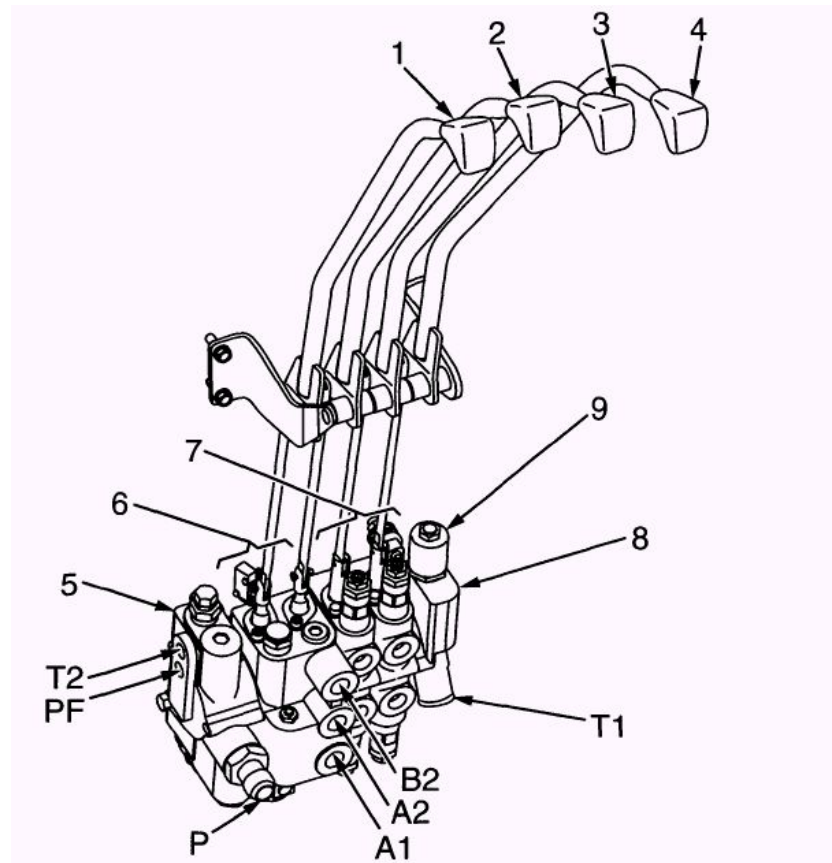
Hydraulic Tank



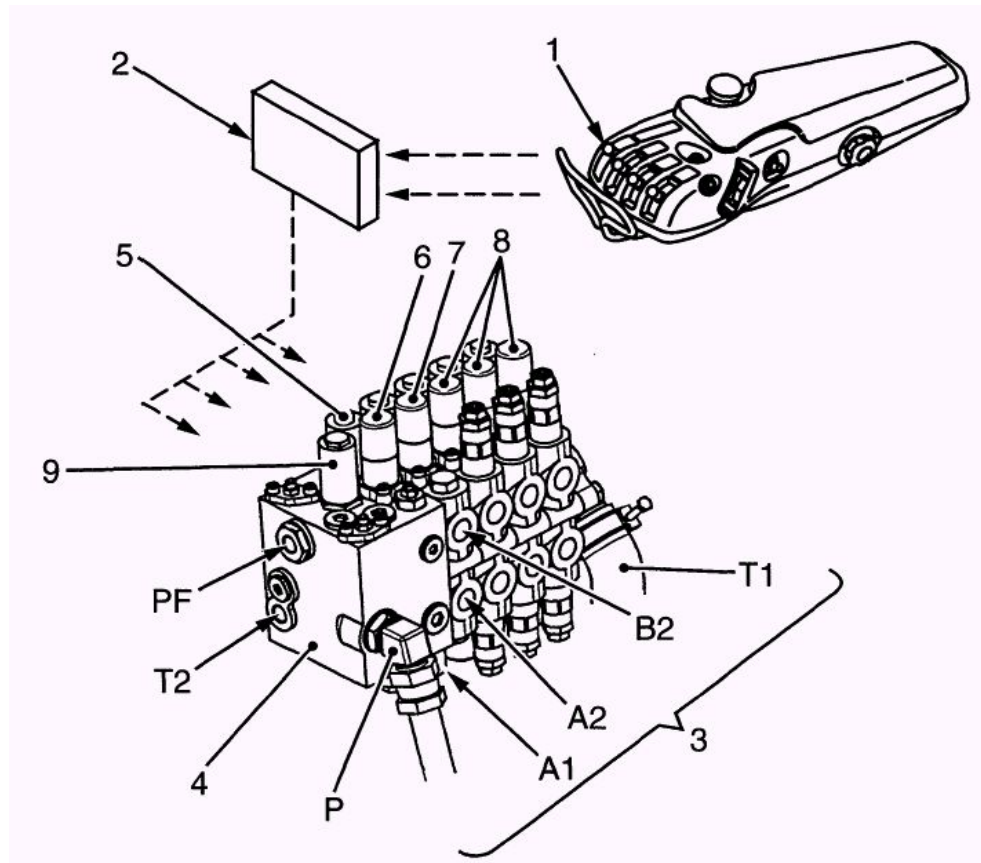
Control Valves

- There are two types of control valves:
 - MC – Manual Control
 - FC – Finger control

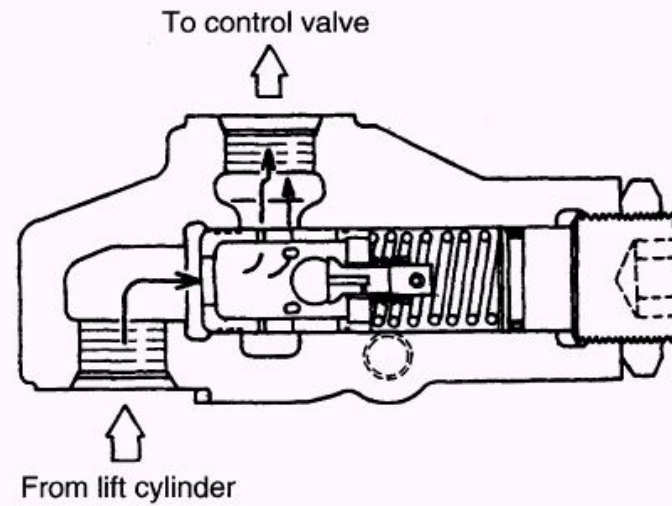
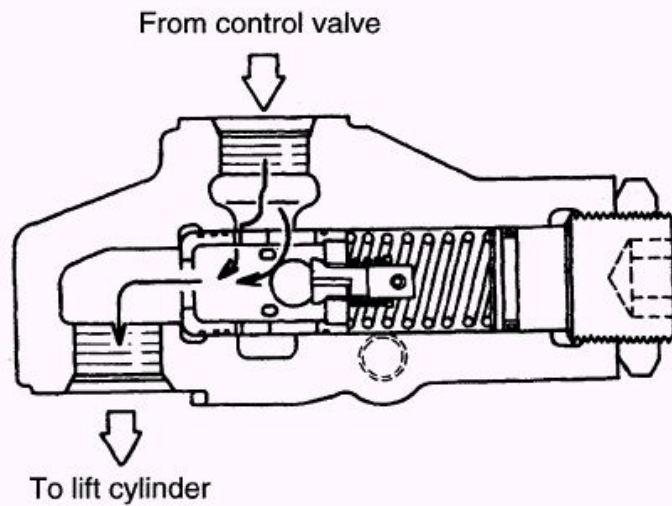
MC Control Valve



FC Control Valve

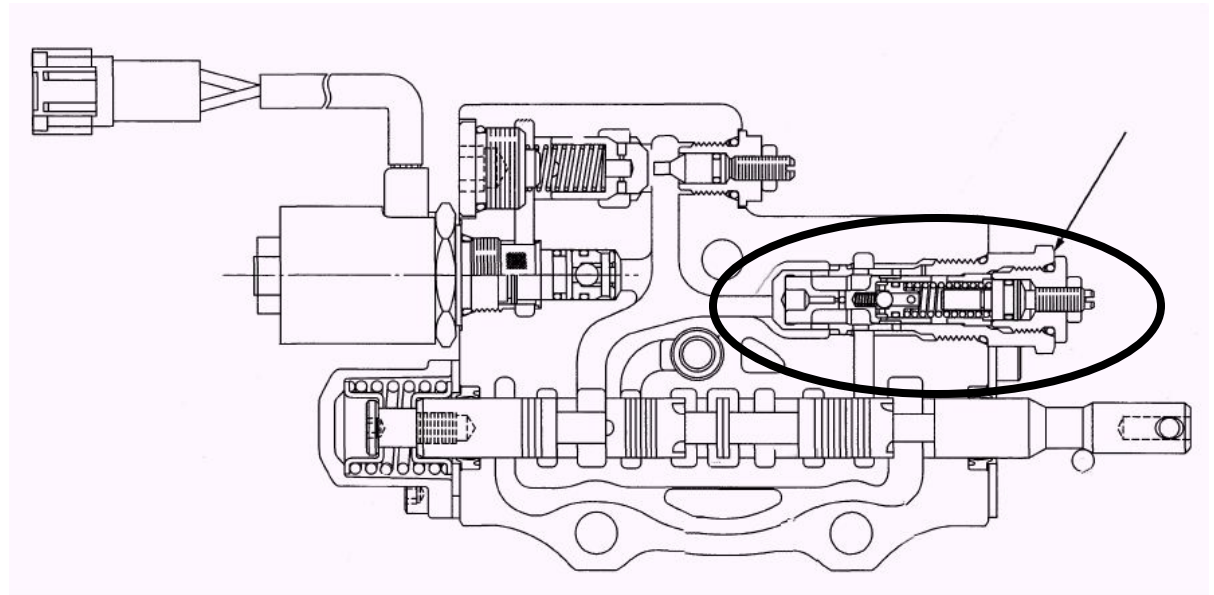


Flow Regulator FC

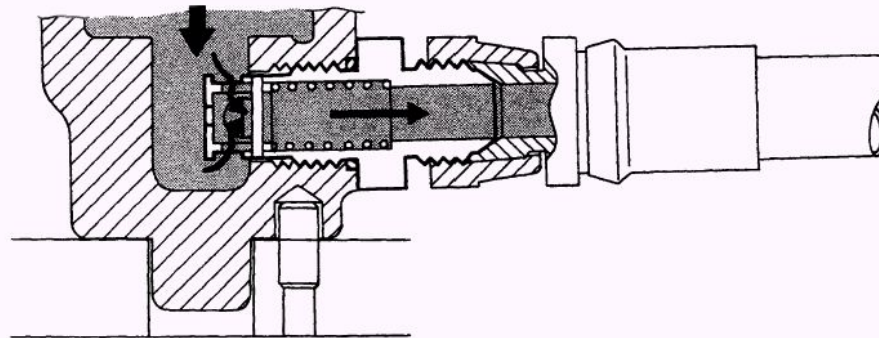


Flow Regulator MC

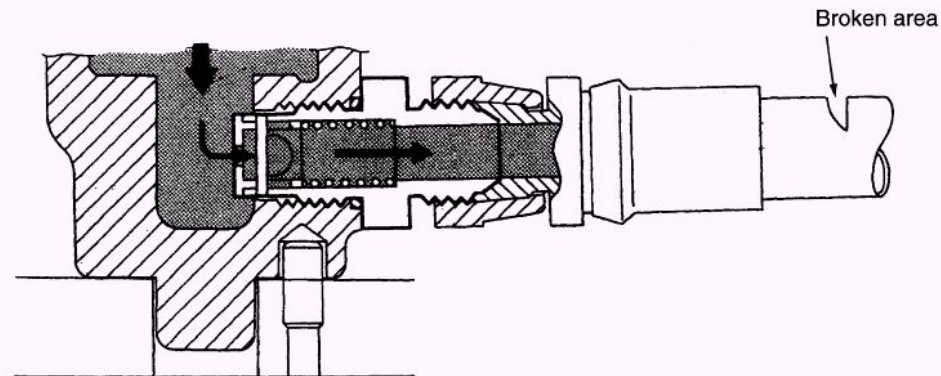
- The flow regulator for the MC control valve is located within the Lift valve



Down Safety Valve



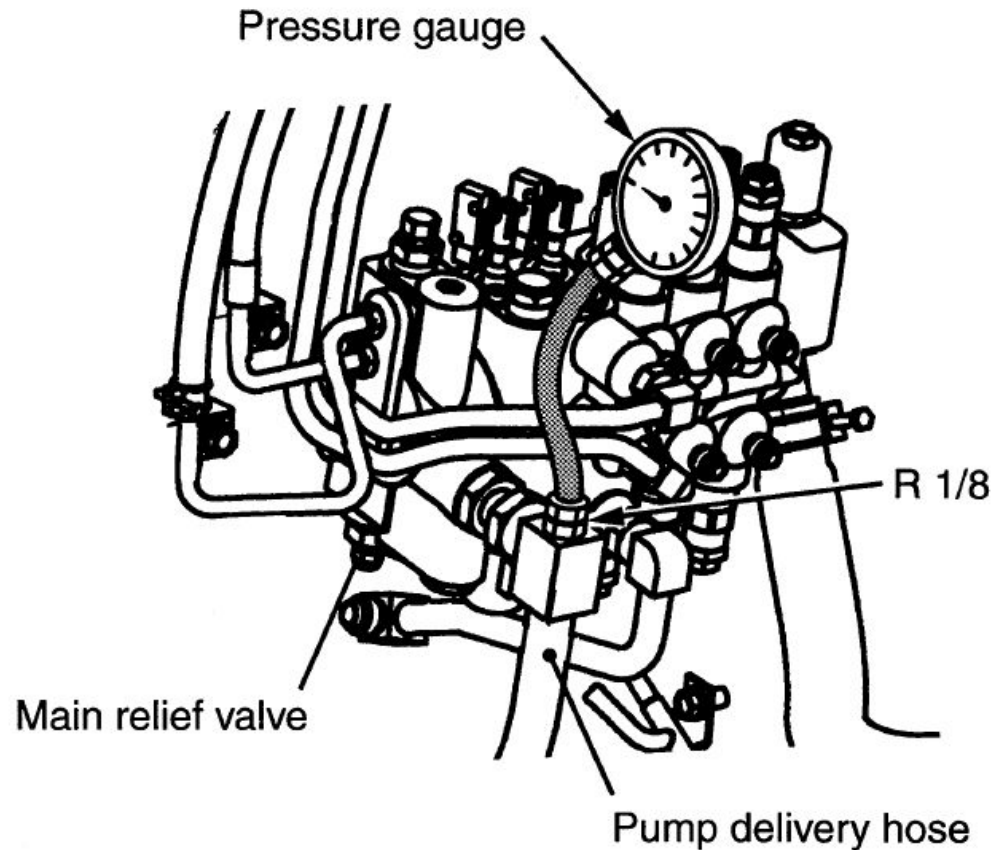
When in normal condition



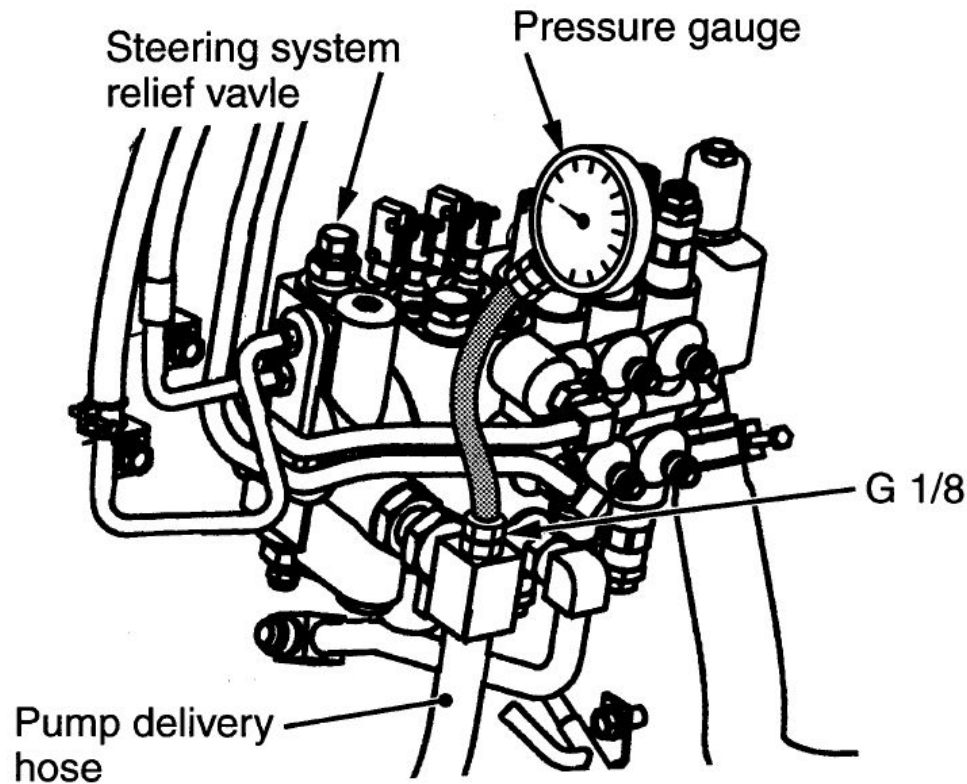
When piping is broken

Adjustments

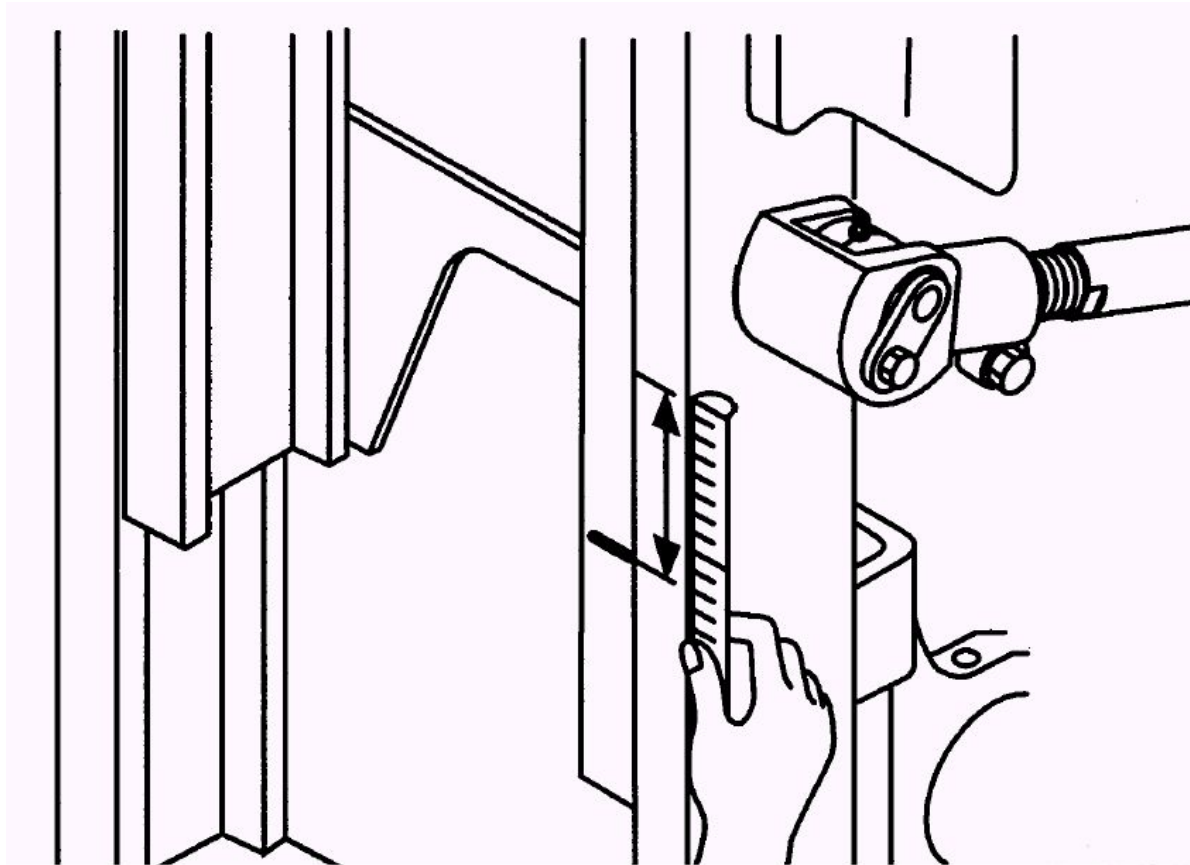
Main Relief Valve



Flow Divider Relief Valve



Load Drift Test



Forward Tilt Test

