

OIL INDUSTRY JARGON

**PIG
LAUNCHER**

**MONKEY
BOARD**

WILD CAT

WORMS

BIG BEAR

ROUSTABOUT

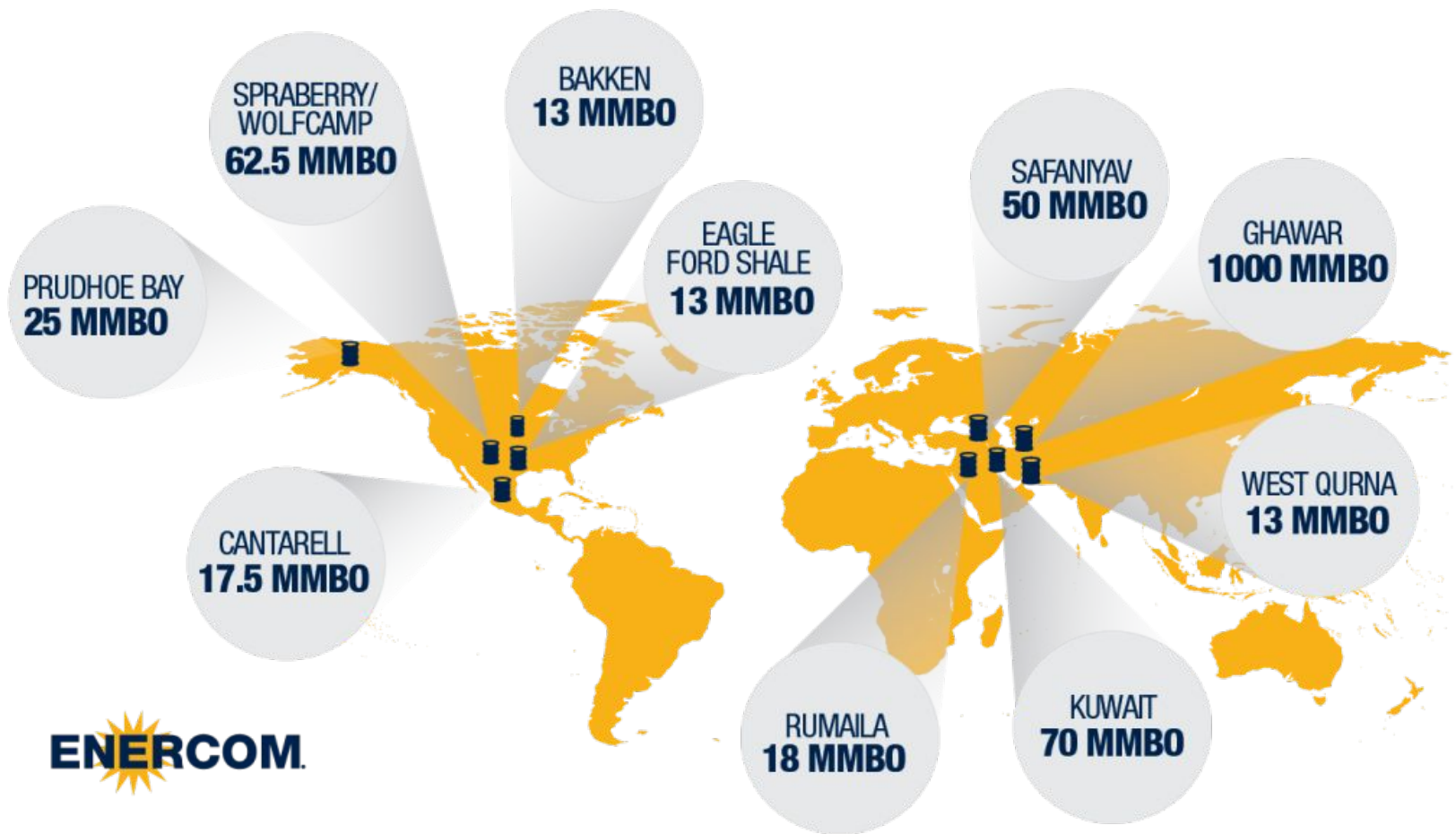
MOUSEHOLE

ELEPHANT



- The largest oil fields, are named “***Elephants***,” and they hold 500 million barrels of oil or more.
- The largest Elephant of them all is the Ghawar Field in Saudi Arabia, originally discovered in 1948 and placed on production in 1951. Recent developments in technology, however, have created new resource play Elephant fields to market in the United States, changing the world’s supply-demand equilibrium.

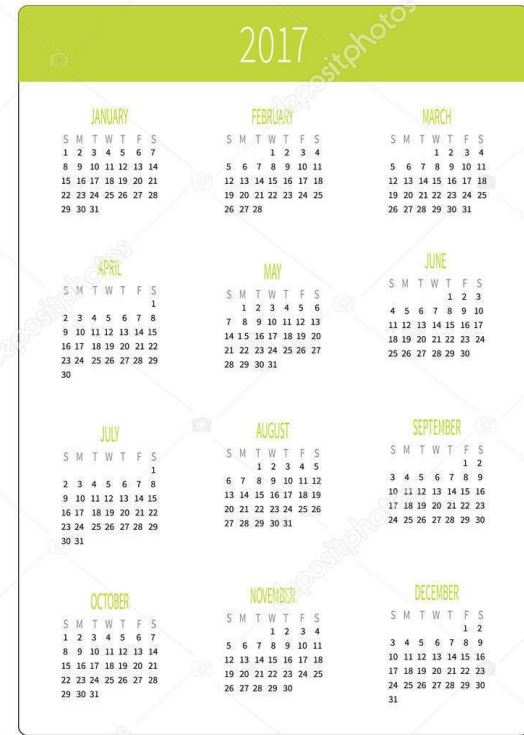
TOP 10 ELEPHANTS



BEAR



Big bear – Is a shift that lasts a minimum of 50 straight days.



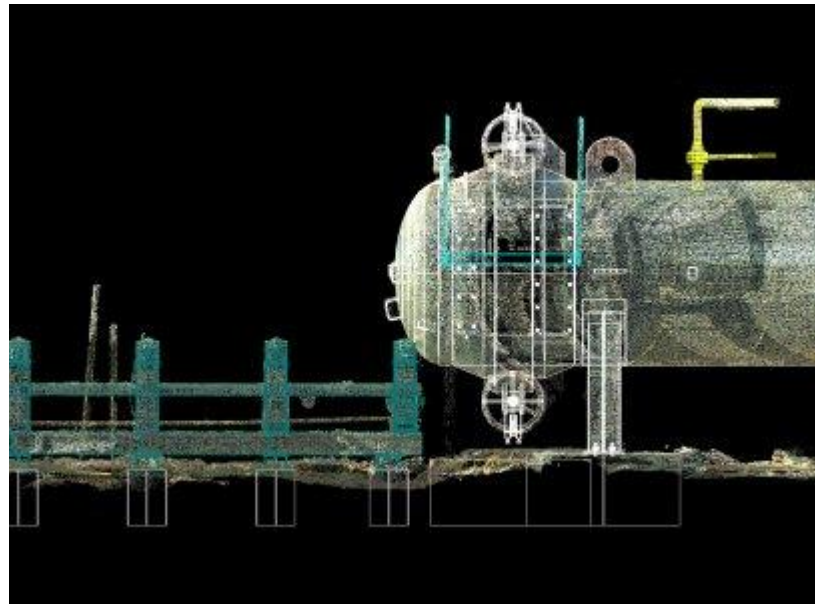
PIG



- **Pig** - A device inserted into a pipeline for cleaning purposes (**Pipeline Inspection Gauge**).
- The act of using a 'pig' is called pigging.
- Originally Pigs were made from straw wrapped in wire, the squealing noises they made whilst travelling through the pipe. This is believed to be what originally led to the name 'Pig' .



Pig launcher and receiver



WILD CAT



- **Wildcat wells** are drilled where little or no known geological information is available.



MONKEY



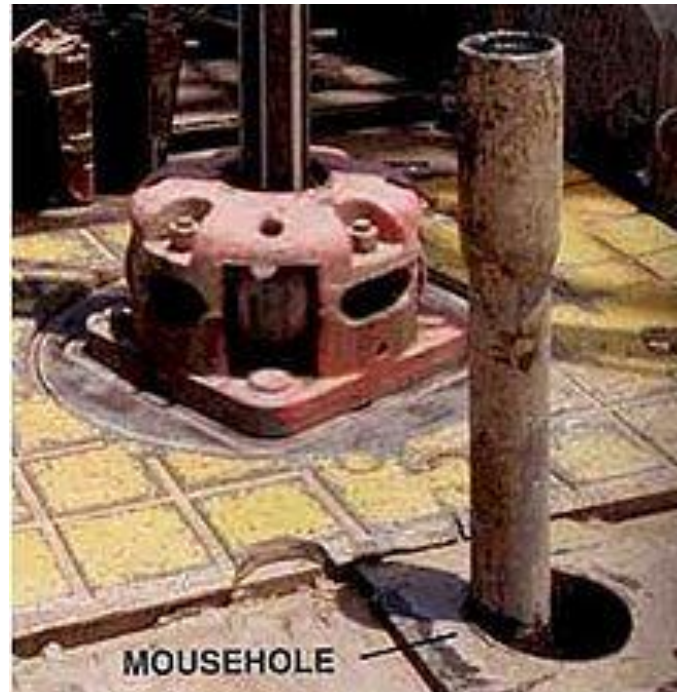
- **Monkey board** – a small platform that the derrickman stands on when tripping pipe.



MOUSE



- **Mousehole** is the storage area on a drilling rig where the next joint of drilling pipe is held until needed. This hole is in the floor of the rig, bored into the earth for a short way, and usually lined with a metal casing known as a scabbard.
- The purpose is to have the top of the piece of drill pipe on a level with the kelly when the time comes to add the new piece of drill pipe

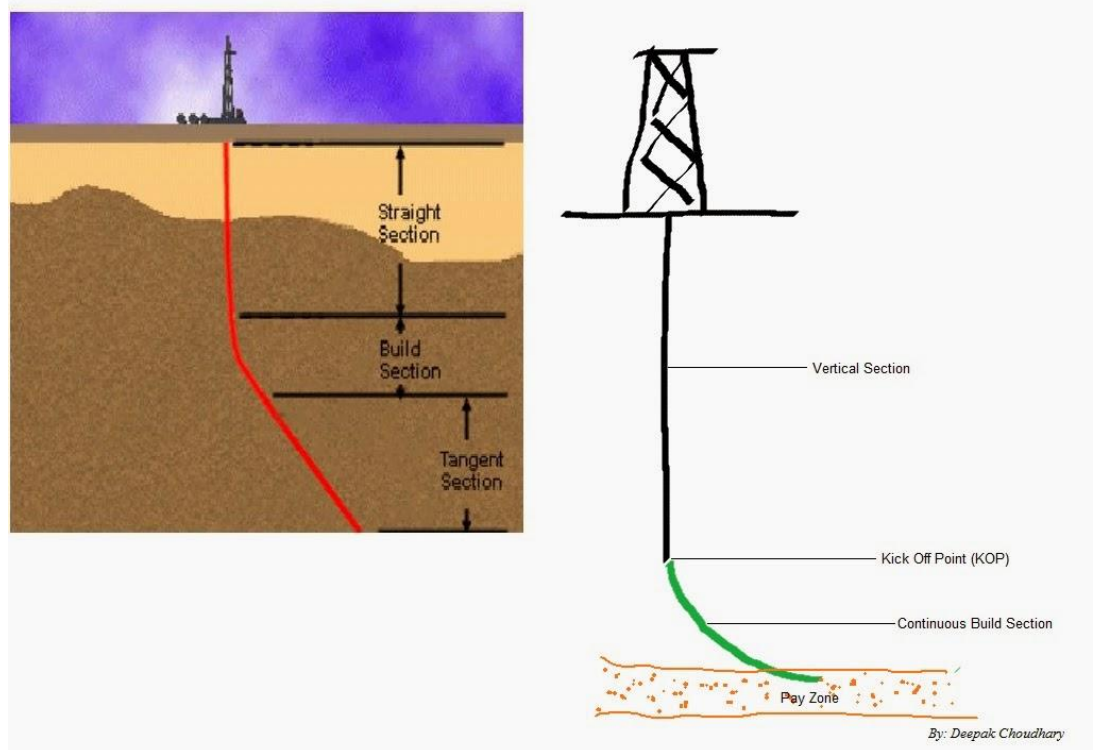


DOG LEGS

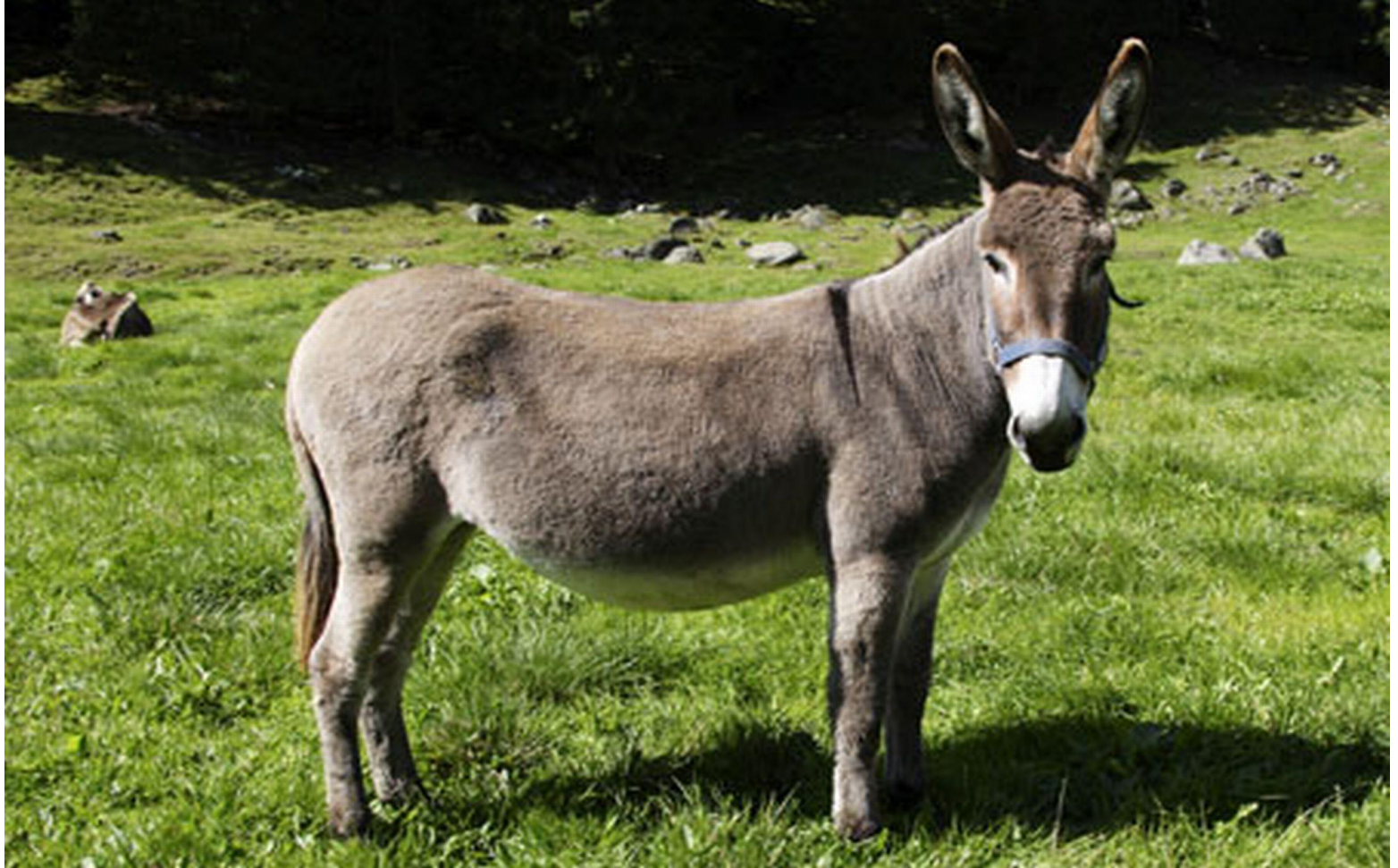


Dog leg is a “change in the inclination or direction of the hole”.

In a directional well, a dog leg is present, starting at the kick-off point.



DONKEY



Nodding donkey is a type of pump that is commonly used to extract oil if the oil is not carried to the surface naturally by internal pressure. The device has a component which moves up and down during operation. This vertical motion activates a pump at the bottom end. Oil, or an emulsion of water and oil, is then forced up to the surface where it can be collected. Nodding donkey pumps are commonly known as pump jacks, though other terms such as thirsty bird, horsehead pump and grasshopper pump are also used.



CHRISTMAS TREE



The **X-Mas** is an assembly of valves, spools, and fittings used for an oil well, gas well, water injection well, other types of wells for flow control. It was named for its crude resemblance to a decorated tree.

