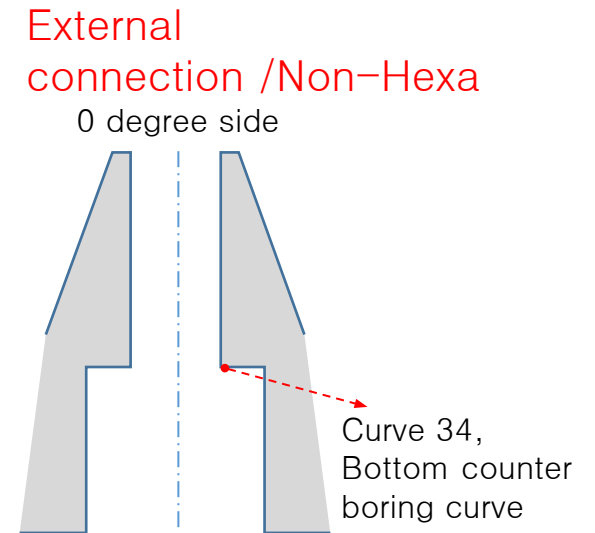
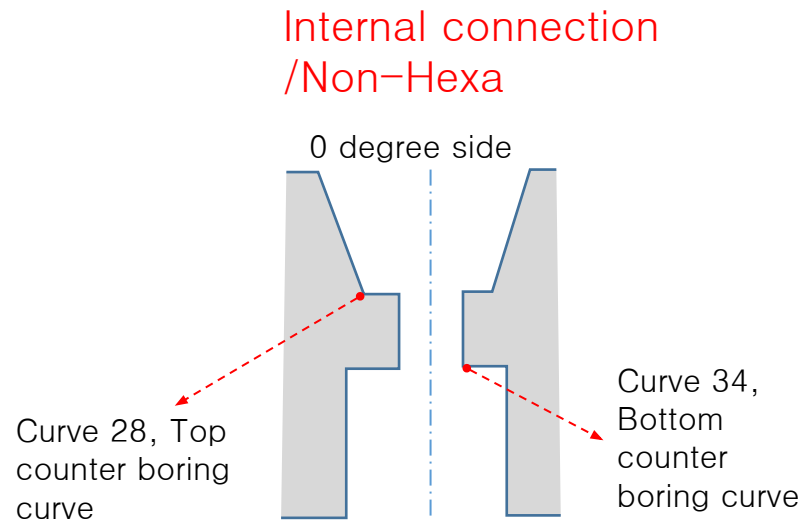
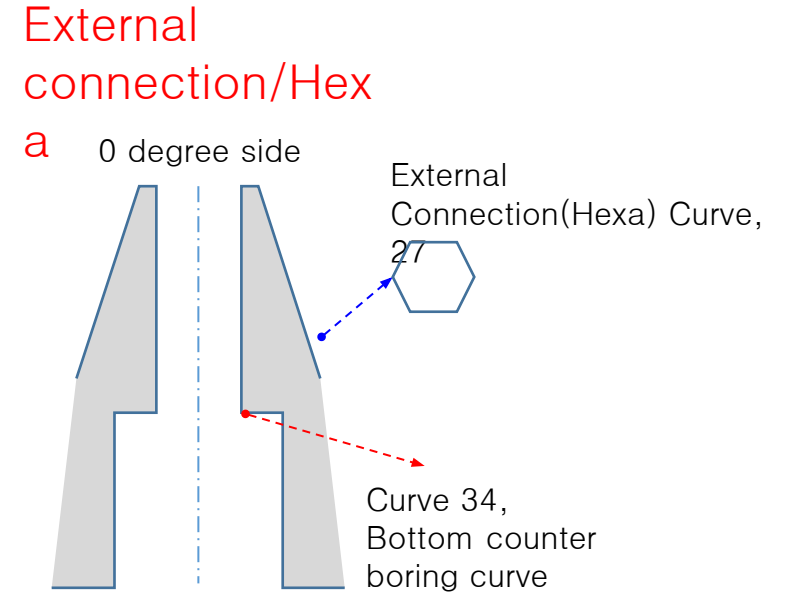
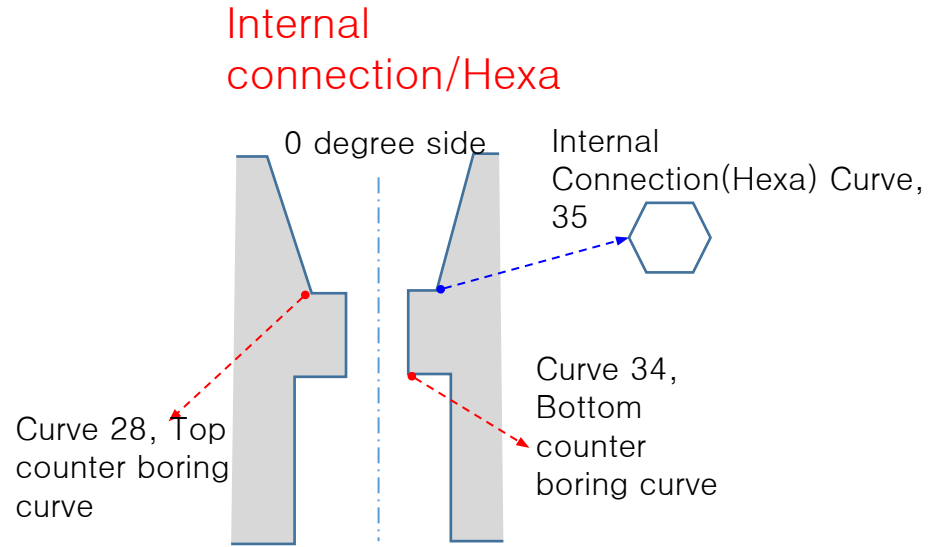
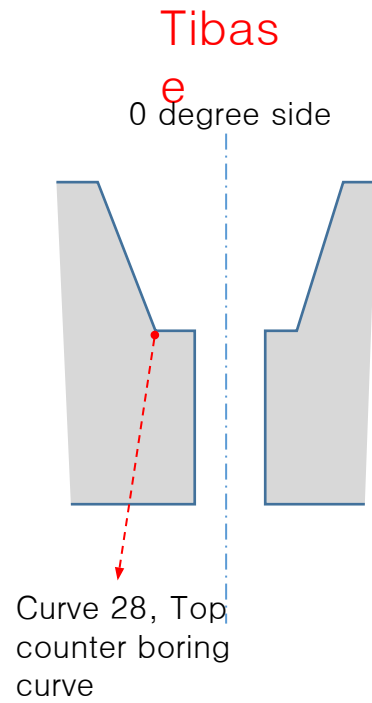
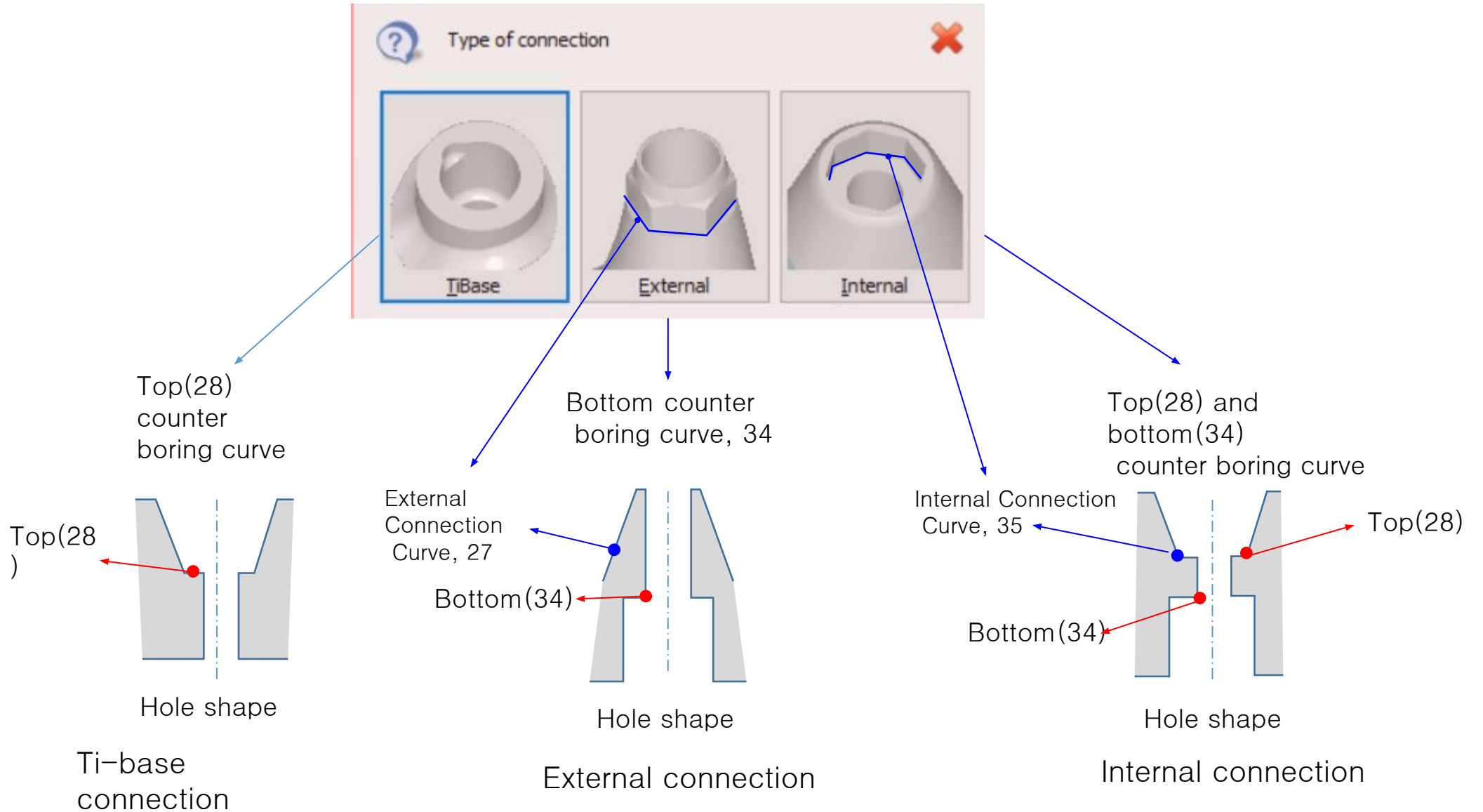


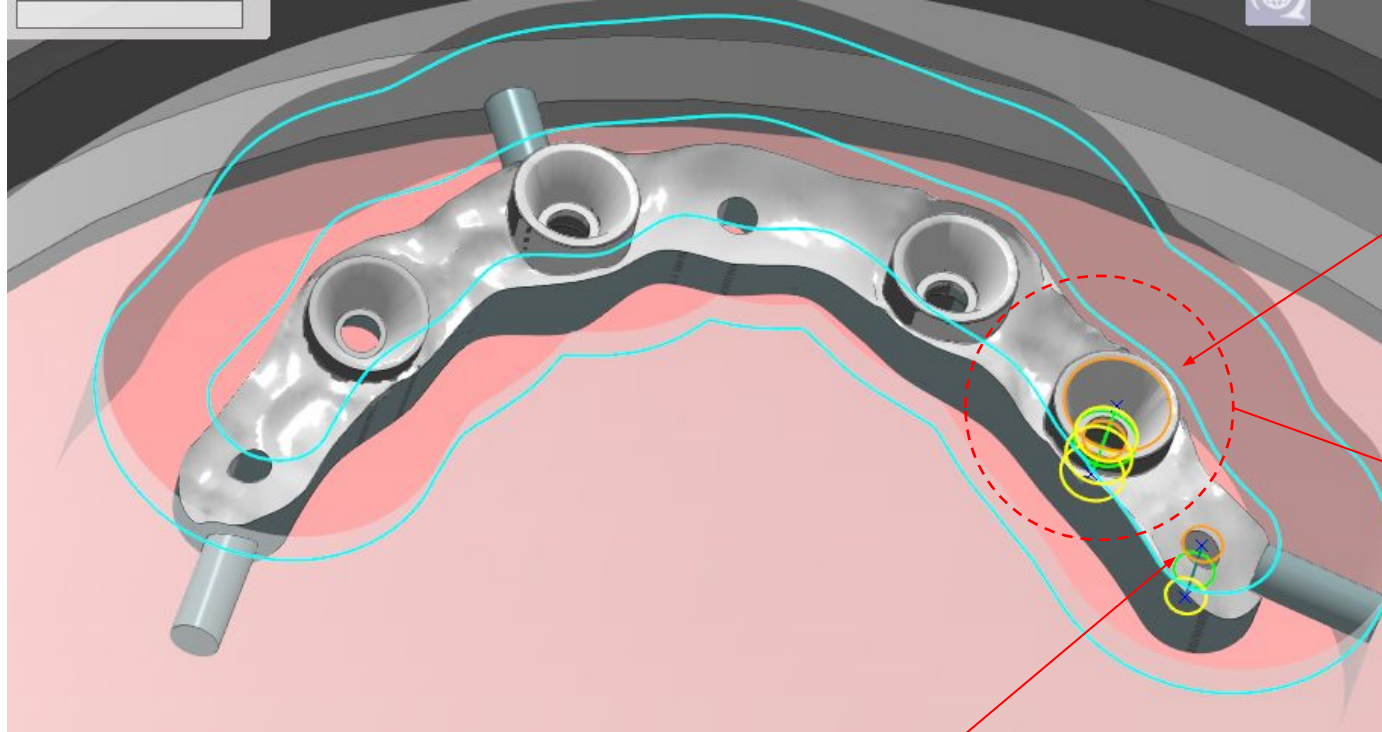
# Various Connection Types of Implant Bar/Bridge



# Relationship between connection types and hole shapes



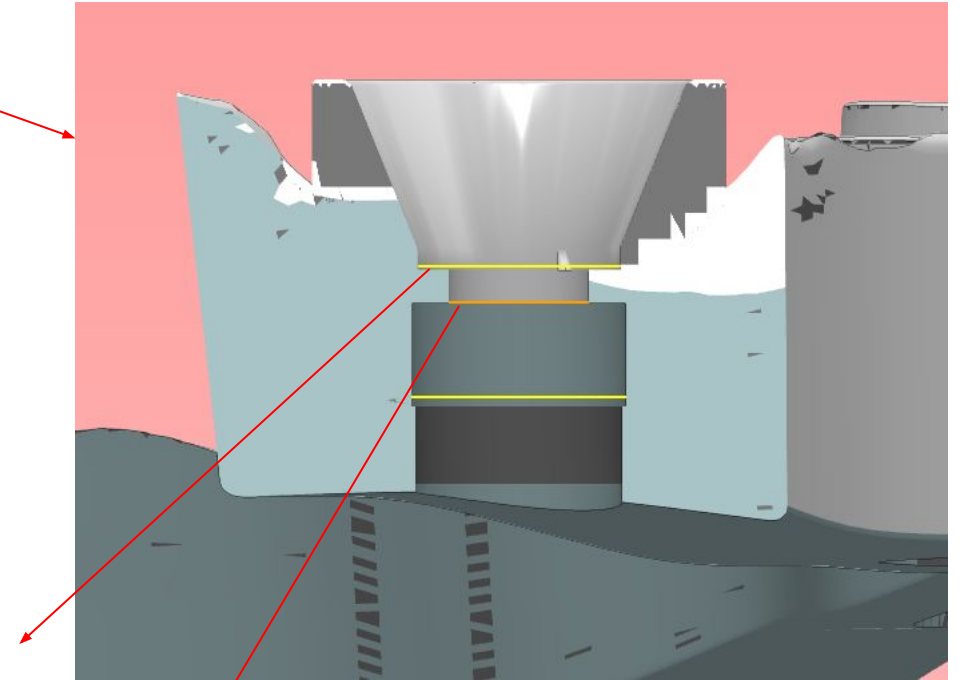
# Internal Connection(28, 34 and 35) with internal Non-Hexa



Internal connection  
Hole type 1

Hole for thread  
Hole type 2

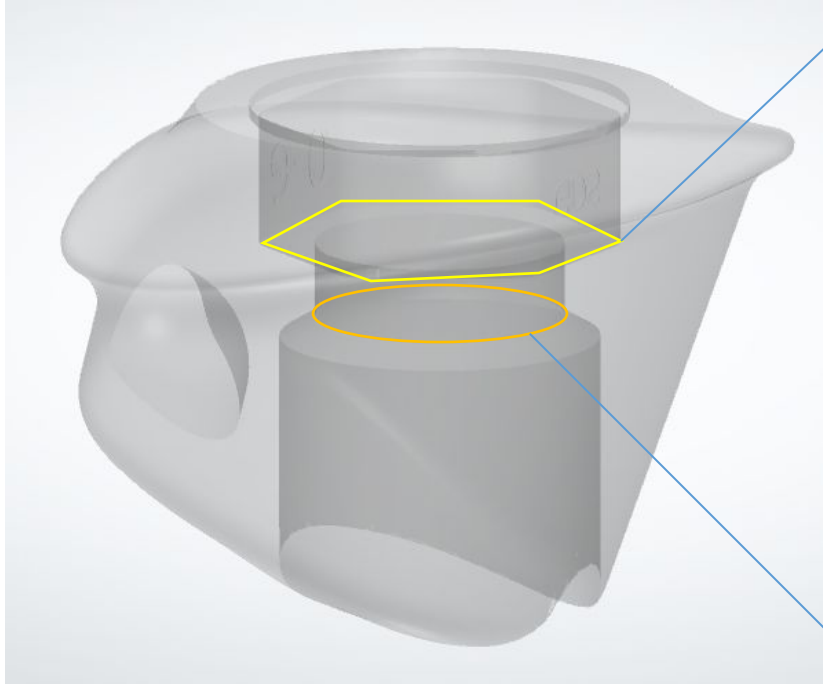
Yellow color  
Inside  
Top counter boring curve  
28



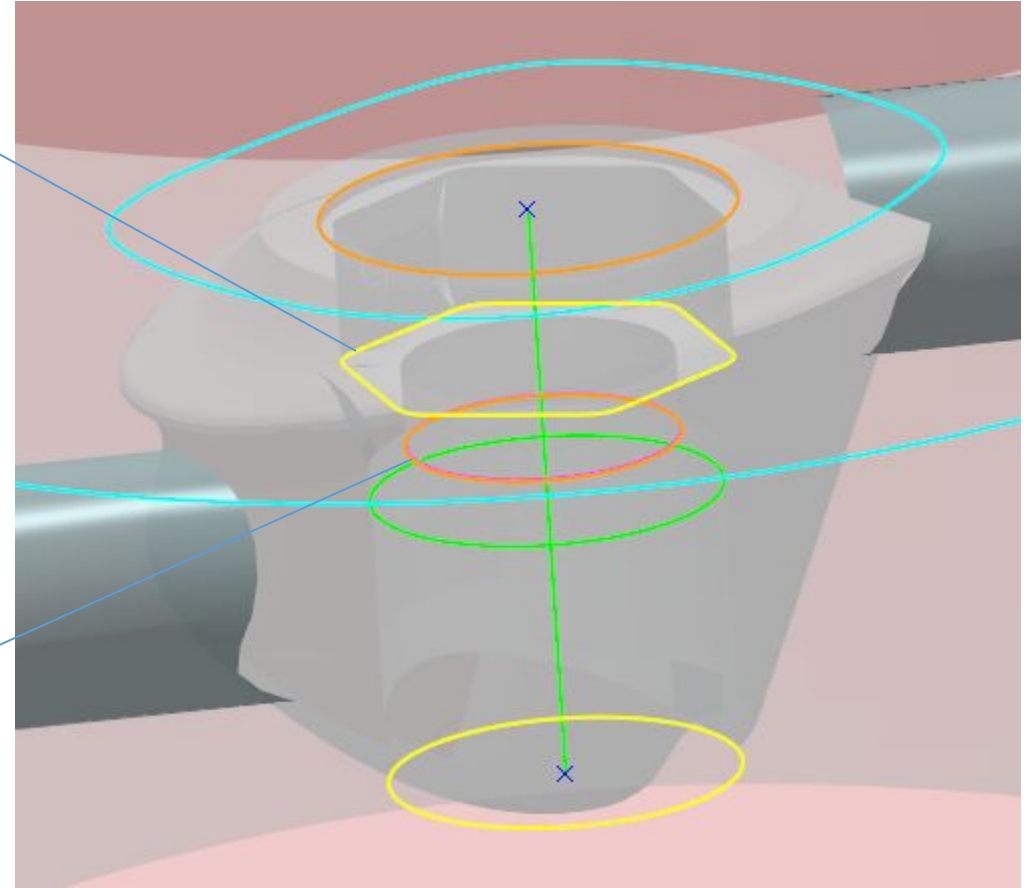
Orange color  
Inside  
Bottom counter boring curve  
34

# Internal Connection(28, 34 and 35) with internal Hexa

Top counter boring(28)  
Inside connection(35)

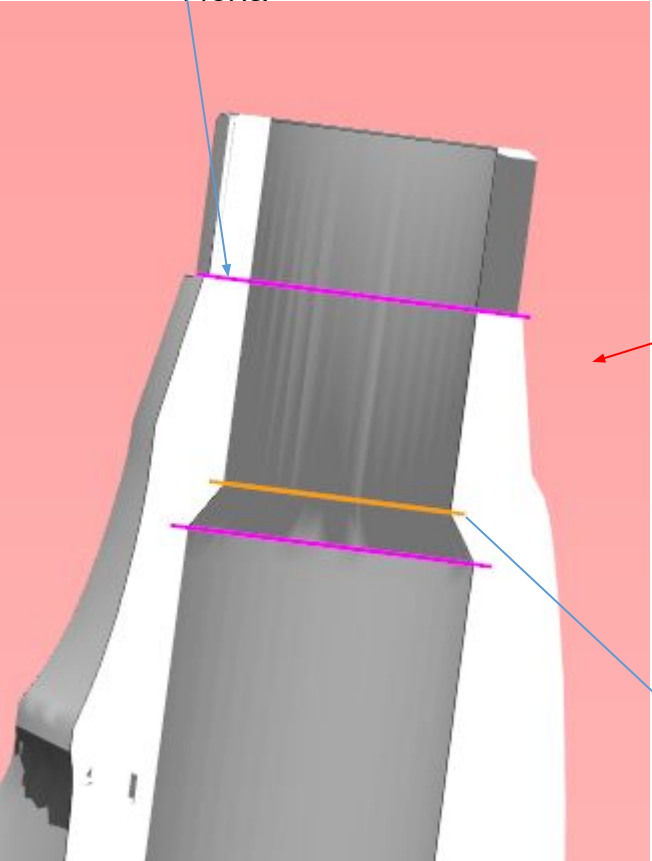


Bottom counter boring(34)

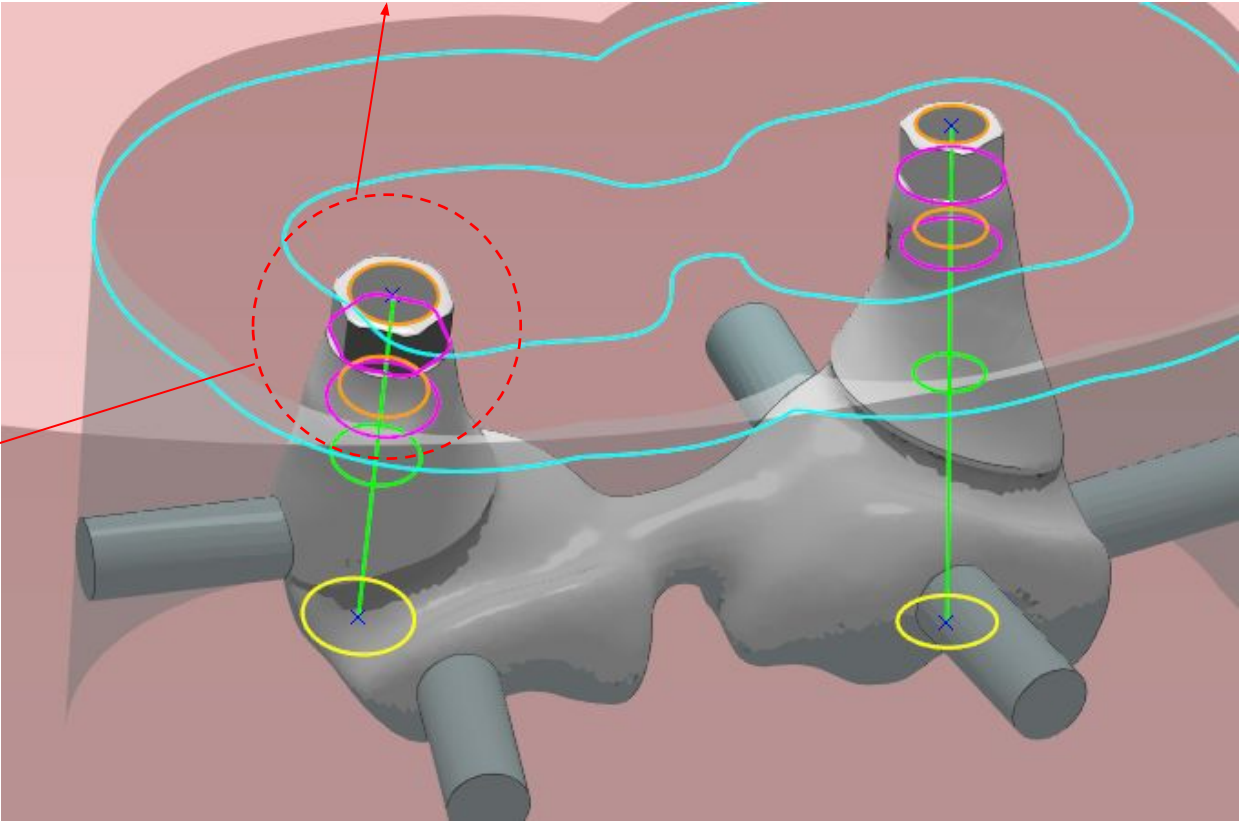


# External Connection (27 & 34) with external Hexa

Pink color  
Outside connection  
27  
Hexa

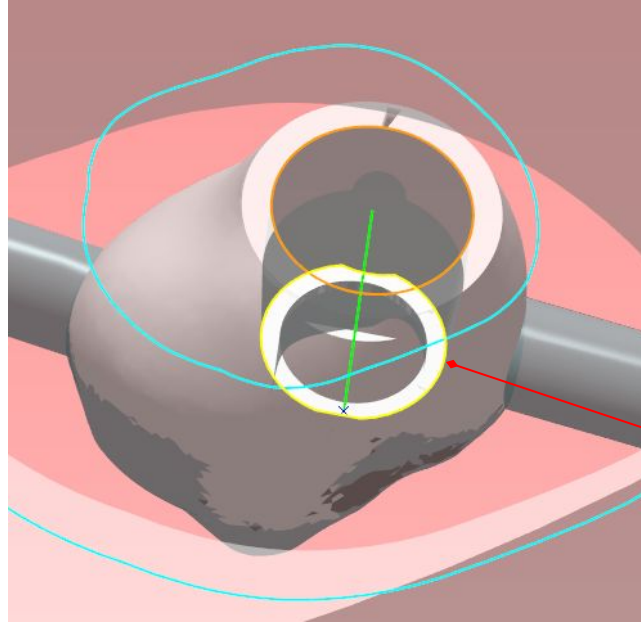
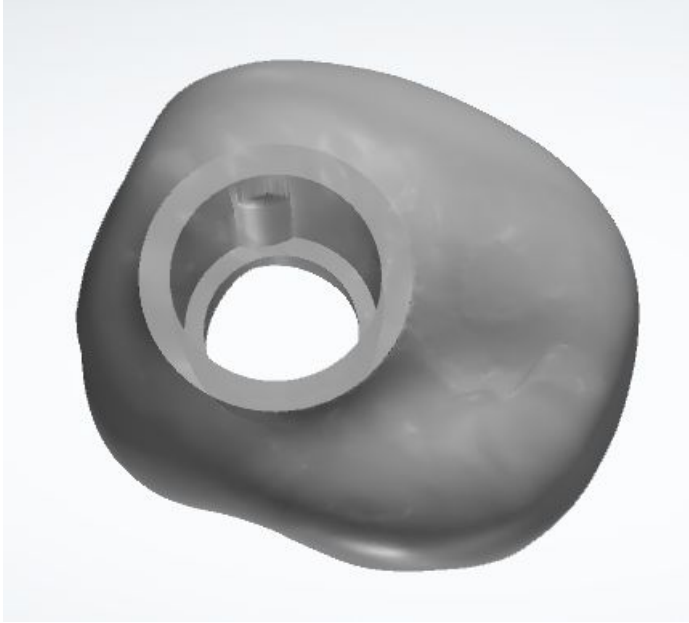


External connection  
Hole type 1



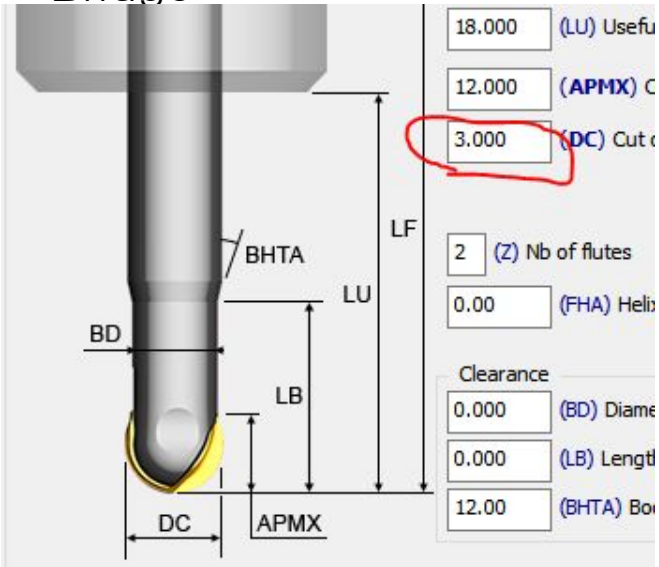
Orange color  
Inside  
Bottom counter boring curve  
34

# Ti-base Connection (28)

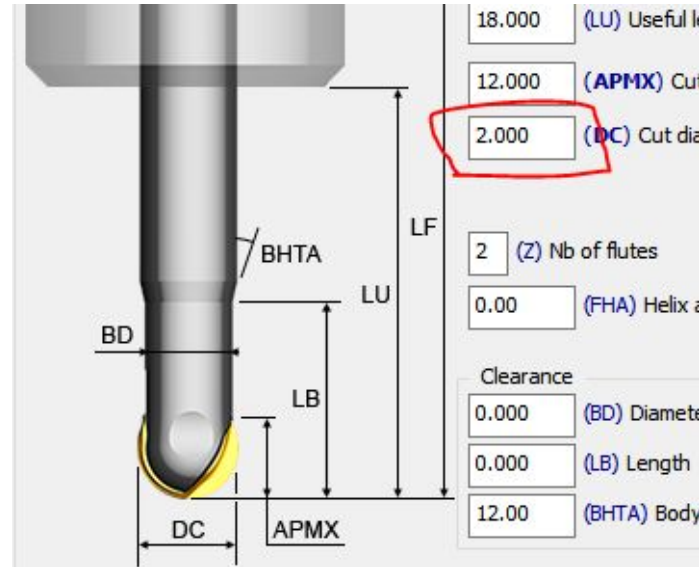


Yellow color  
Inside  
Top counter boring curve  
28

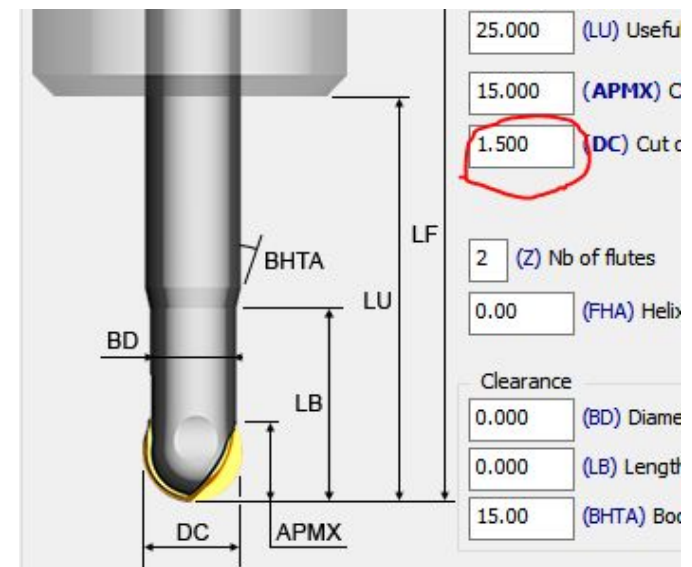
# Tools for implant Bar and Bridge



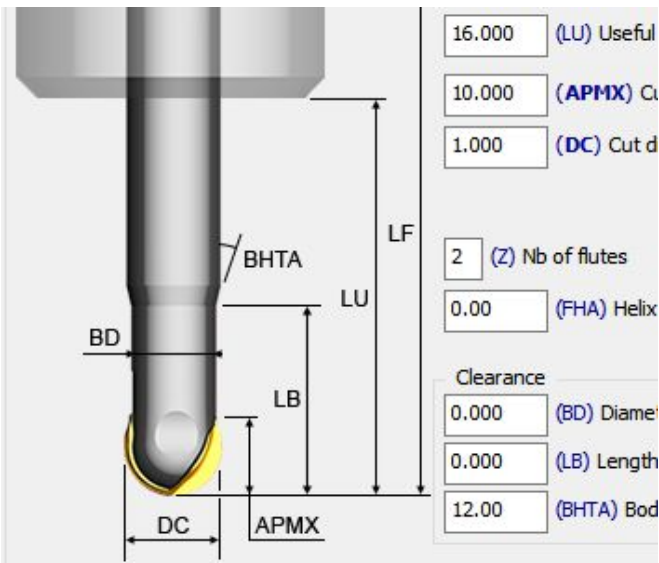
1. Ball end mill D3.0 L12mm



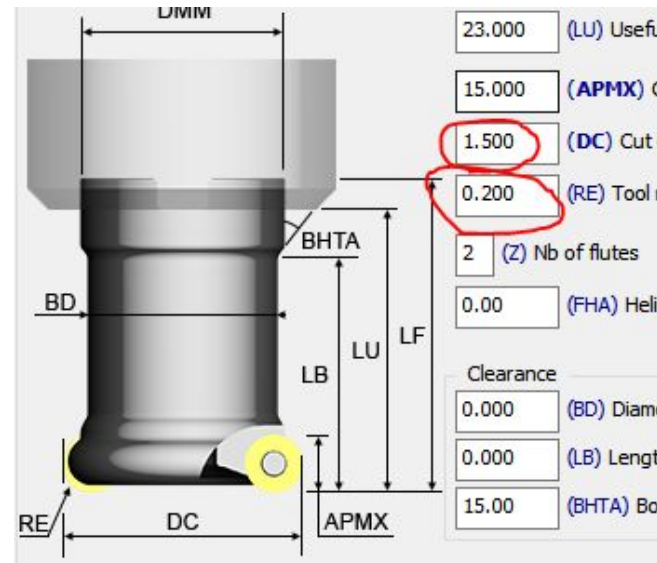
2. Ball end mill D2.0 L12mm



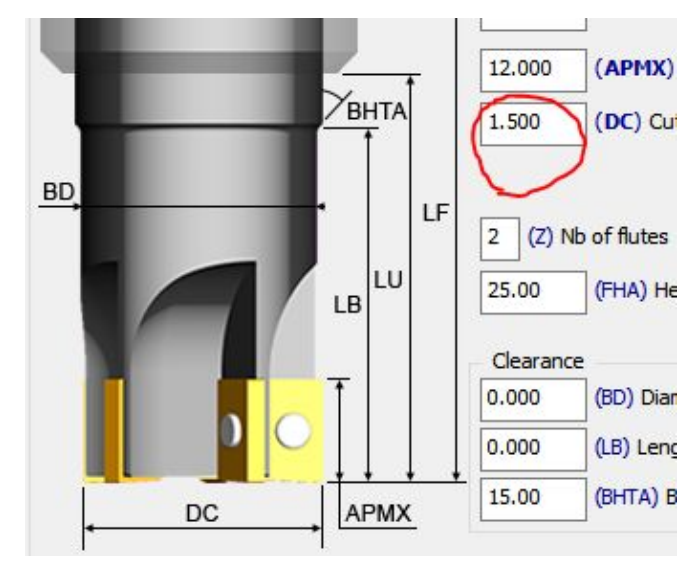
3. Ball end mill D1.5 L15mm



4. Ball end mill D1.0 L10mm

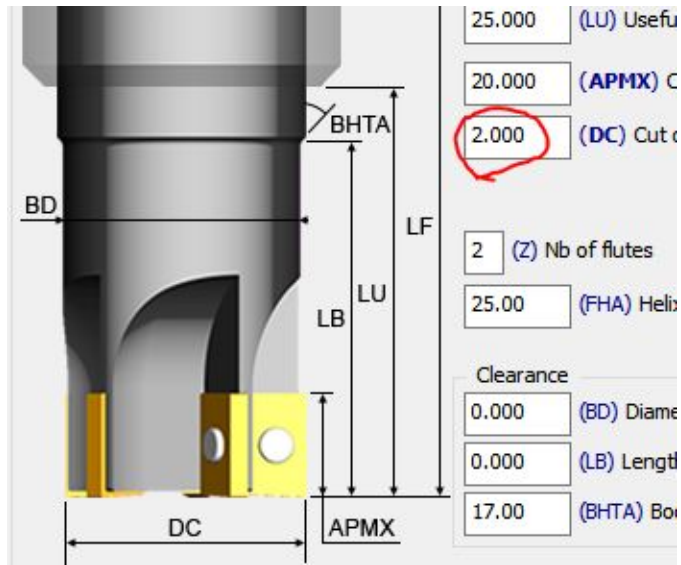


5. Corner radius end mill D1.5 r0.2 L15mm

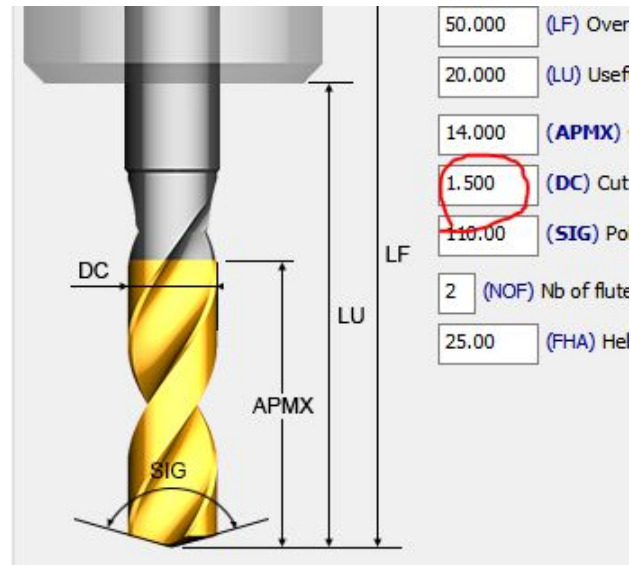


6. Flat end mill D1.5 L12mm

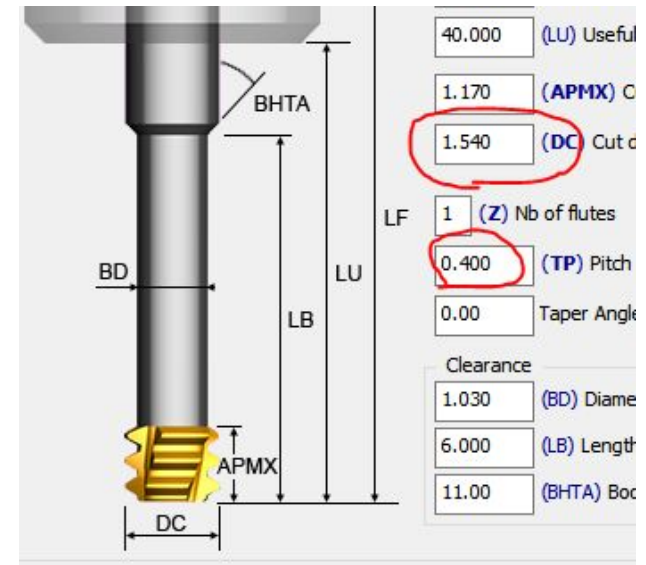
# Tools for implant Bar and Bridge



7.Flat end mill D2.0  
L20mm



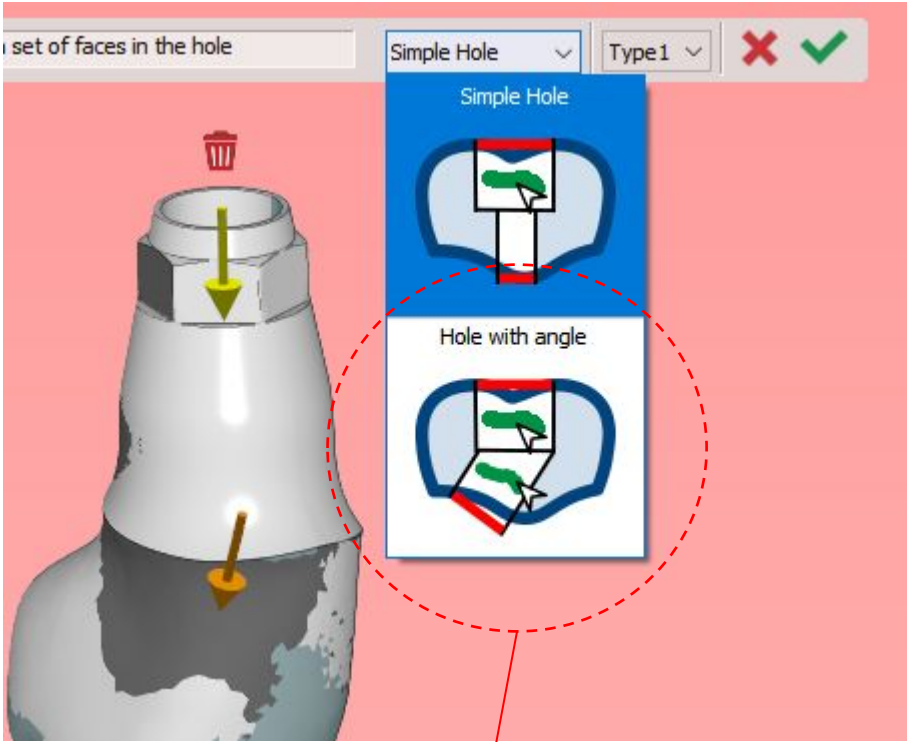
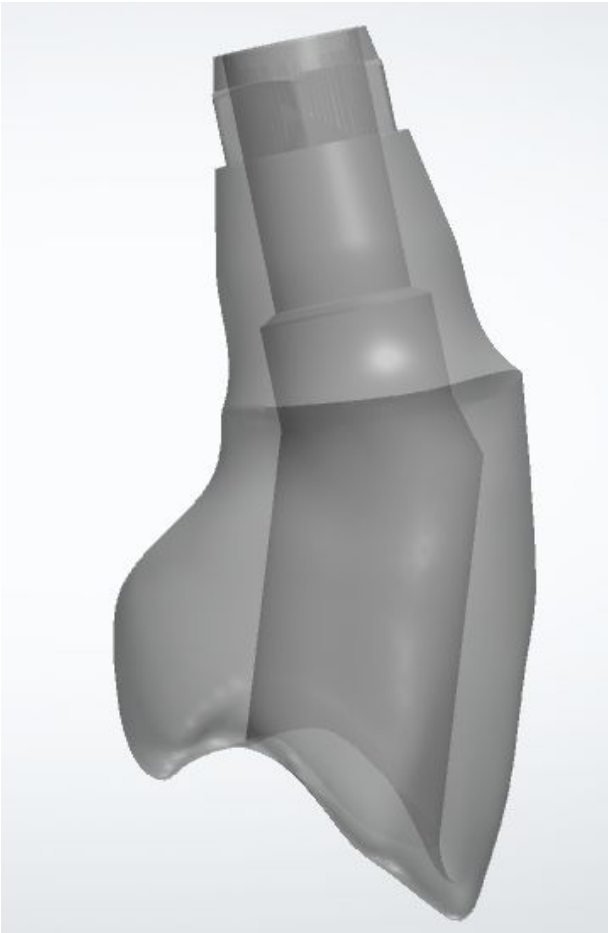
8.Drill D1.5 L14mm for  
bar



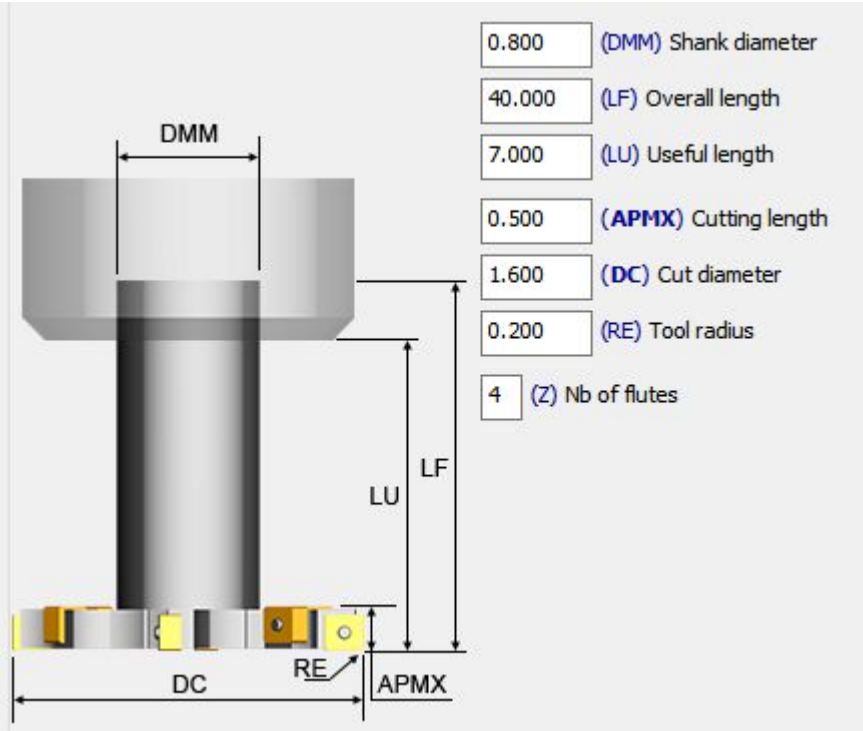
9.Thread end mill D1.5 L6mm for  
bar



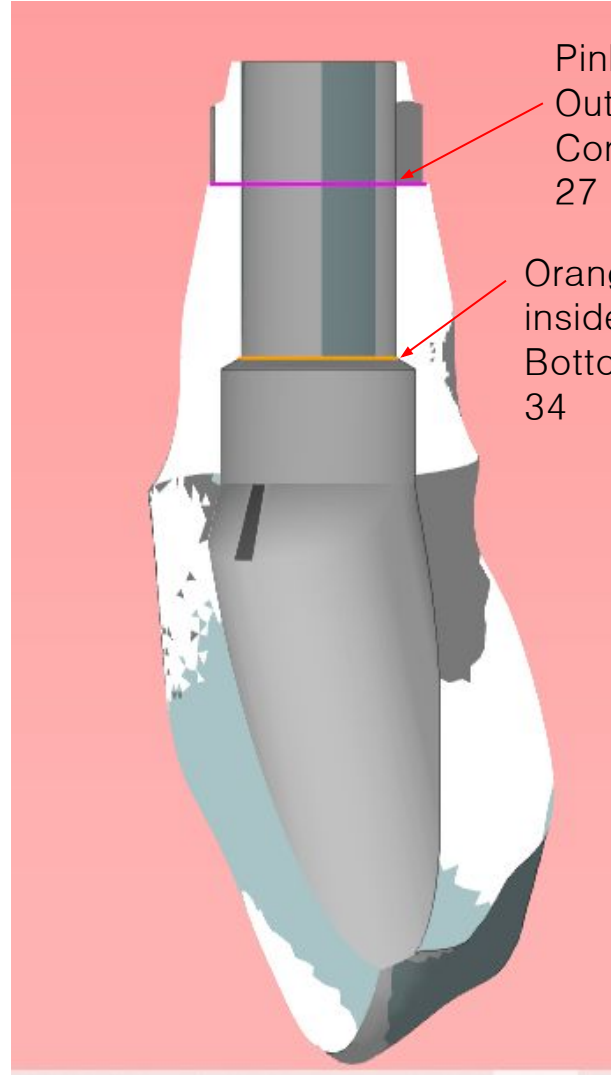
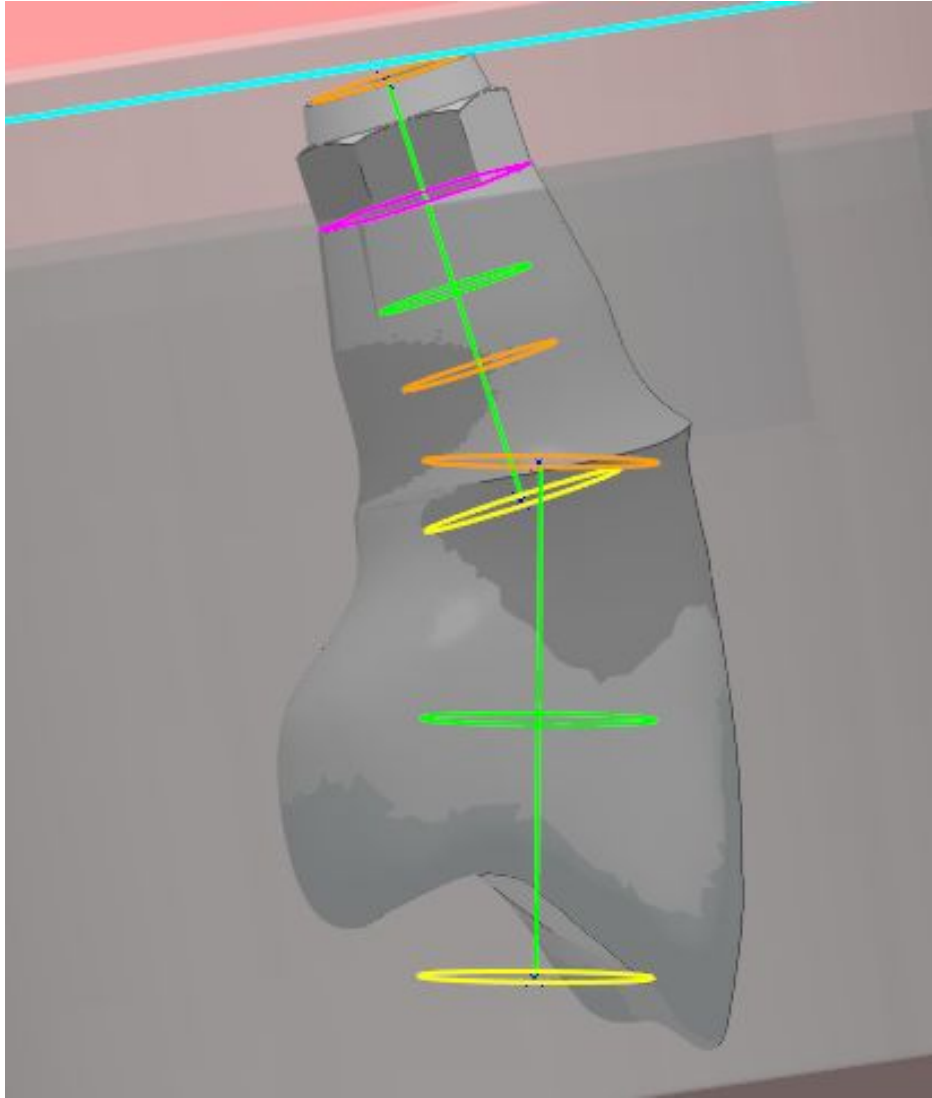
# Angled implant abutment(Standard Abutment) with external hexa connection



Hole definition



Special tool for undercut (woodruff cutter)



Pink color  
Outside  
Connection curve  
27

Orange color  
inside  
Bottom counter boring curve  
34

# Templates for metal implant bar & bridge

> GO2cam\_Intl > GO2dentalV608 > Oem > 461 > OPELIST

이름

- Buccal Milling with cutting(A0B90)
- Buccal Milling with cutting(A27B90)
- Crown and Bridge
- Disc Abutment
- Implant Bar
- Implant Bridge
- Inlay
- SCRP
- Sirona Surgical Guide

- Crown Bridge
- Implant bridge
- Osstem DENCA
- SCRP bridge

Dry, implant bridge by C-type

- Metal Implant Bar
- PMMA implant Bar
- Zir implant Bar

- Implant bar by Interface Replacement
- Implant bar by manual curve setting

- Implant Bar-Ext Hex\_(undercut type1-Thread hole2).OPL
- Implant Bar-Ext Non-Hex\_(undercut type1-Thread hole2).OPL
- Implant Bar-Int Non-hex\_(undercut type1-thread hole2).OPL
- Implant Bar-Int\_Ext Mixed Non-Hex\_(undercut type1-thread hole2).OPL

- Metal Angled Channel implant Bridge
- Metal implant Bridge by manual curve setting
- Metal implant Bridge by Interface Replacement
- PMMA implant Bridge
- Zir implant Bridge














- Ang CH-D3-2-1.5-1-F1.5-Fr1.5-WC1.5-Ext Conn-Hexa(Ty1-D1.5).OPL
- Ang CH-D3-2-1.5-1-F1.5-Fr1.5-WC1.5-Ext Conn-Non Hexa(Ty1-D1.5).OPL

- Implant Bridge-Ext Hex\_(undercut type1).OPL
- Implant Bridge-Ext Non-Hex\_(undercut type1).OPL
- Implant Bridge-Int Hex\_(undercut type1).OPL
- Implant Bridge-Int Non-Hex\_(undercut type1).OPL
- Implant Bridge-Int\_Ext Mixed Non-Hex\_(undercut type1).OPL

## Templates for angled

abutment(single)



GO2dentalV608 > Oem > 461 > OPELIST > Disc Abutment > Metal Abutment

이름	수
 Abutment milling by interface replacement	20
 <u>Ang CH with Ucut-D3-2-1.5-F1.5-Fc1.5-WC1.5-Ext Con-Hexa.OPL</u>	20
 <u>Ang CH with Ucut-D3-2-1.5-F1.5-Fc1.5-WC1.5-Ext Con-NonHexa.OPL</u>	20
 Ang CH-D3-2-1.5-F1.5-Fc1.5-Ext Conn-Hexa.OPL	20
 Ang CH-D3-2-1.5-F1.5-Fc1.5-Ext Conn-Non Hexa.OPL	20
 Ang CH-D3-2-1.5-F1.5-Fc1.5-Int Conn-Hexa.OPL	20
 Ang CH-D3-2-1.5-F1.5-Fc1.5-Int Conn-Non Hexa.OPL	20
 Ext Conn-D3-2-1.5-F1.5-Fc1.5-Abutment-Hexa.OPL	20
 Ext Conn-D3-2-1.5-F1.5-Fc1.5-Abutment-Non Hexa.OPL	20
 Int Conn-D3-2-1.5-F1.5-Fc1.5-Abutment-Hexa.OPL	20
 Int Conn-D3-2-1.5-F1.5-Fc1.5-Abutment-Non Hexa.OPL	20
 small hole-Ext Conn-D3-2-1.5-1.0-F1.5-Fc1.5-Abutment-Hexa.OPL	20
 small hole-Ext Conn-D3-2-1.5-1.0-F1.5-Fc1.5-Abutment-Non Hexa.OPL	20

## Templates for angled implant

bridge

Implant Bridge > Metal Angled Channel implant Bridge > Use of woodruff cutter

이름
 <u>Ang CH-D3-2-1.5-1-F1.5-Fr1.5-WC1.5-Ext Conn-Hexa(Ty1-D1.5).OPL</u>
 <u>Ang CH-D3-2-1.5-1-F1.5-Fr1.5-WC1.5-Ext Conn-Non Hexa(Ty1-D1.5).OPL</u>