

Komodo National Park



Komodo



Komodo National Park is located in the center of the Indonesian archipelago, between the islands of Sumbawa and Flores. Established in 1980, initially the main purpose of the Park was to conserve the unique Komodo dragon (*Varanus komodoensis*). However, over the years, the goals for the Park have expanded to protecting its entire biodiversity, both terrestrial and marine.



The main reasons to travel to Komodo National Park are the Komodo Dragons, the superb beaches and the unspoilt corals.



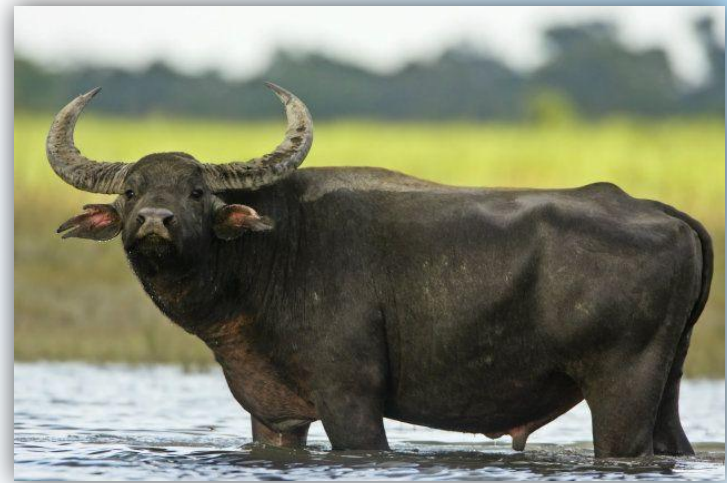


**At night on the Flores Sea,
you also have a magnificent view
of the stars.**

The most famous of Komodo National Park's animals is the Komodo Dragon (*Varanus komodoensis*). It is the world's largest living lizard and can reach 3 metres or more in length and weigh over 70kg.

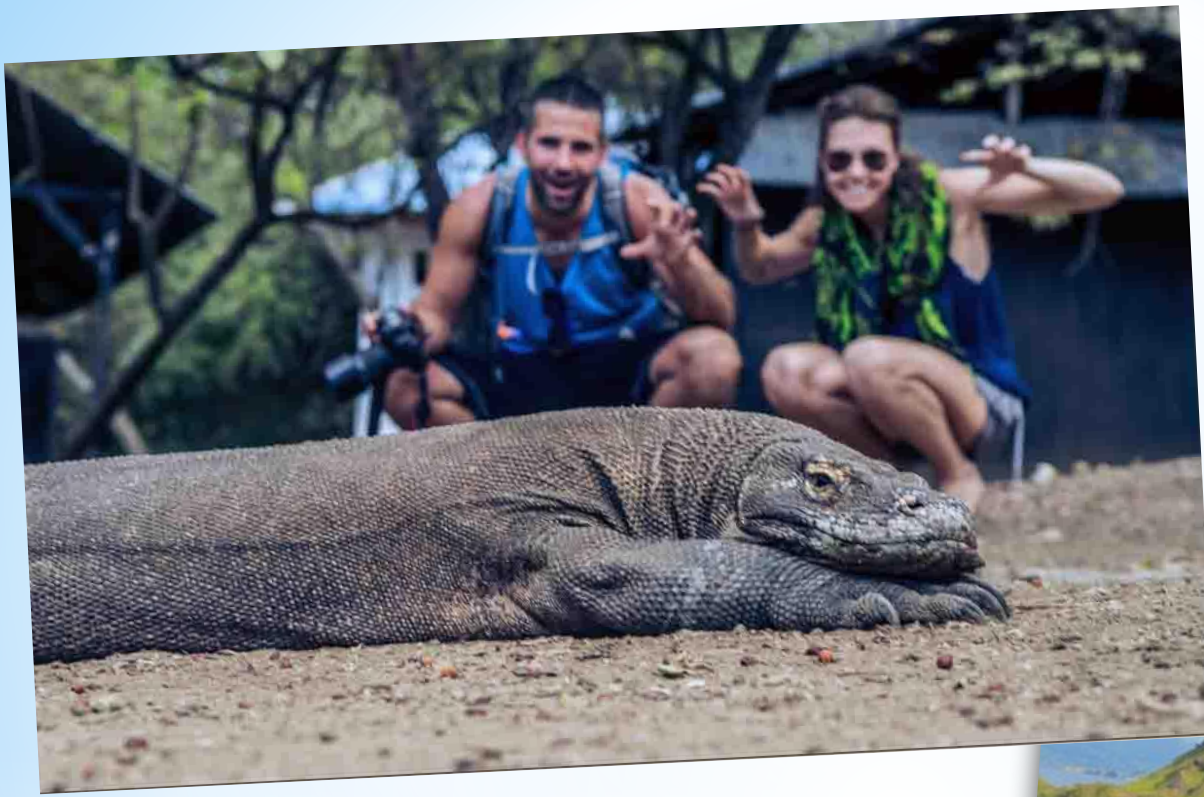


Jon Chia Photography



Keep in mind that there are also wild horses (kuda liar), the Timor deer, water buffalo, long-tailed macaques, and fruit bats on Pulau Rinca, one of the two largest islands in the park.





Depending on the time you have available one or more guided tours on the islands of Rinca and Komodo itself



This area is inhabited by more than a thousand different fish species, making it one of the world's richest marine habitats. You may also swim in the Flores Sea on your incoming or outgoing boat trip to one of the islands





Komodo Island is one of the most famous islands in Indonesia, and annually attract tourists from all over the globe. Excursion to Komodo is a dream for many tourists. The reason lies in the unique features of the islands, as well as some of their inhabitants.

