



Water is a **drink**.

An apple is a **fruit**.

A carrot is a **vegetable**.

1. A potato is a **vegetable**

2. Milk is a **drink**

3. A banana is a **fruit**

4. Lemonade is a **drink**

5. An orange is a **fruit**

6. A tomato is a **vegetable**

1. Masha likes **apples**
2. The rabbit likes **carrots**
3. The monkey likes **bananas**
4. The mouse likes **cheese**
5. The cat likes **fish**



-What`s your favourite food?

My favourite food is ...

I like ...

-Do you like bananas?

Yes, I do / No, I don`t

How **many**...?

How **much**...?

How **many** eggs are there in the box?

Not many / A lot



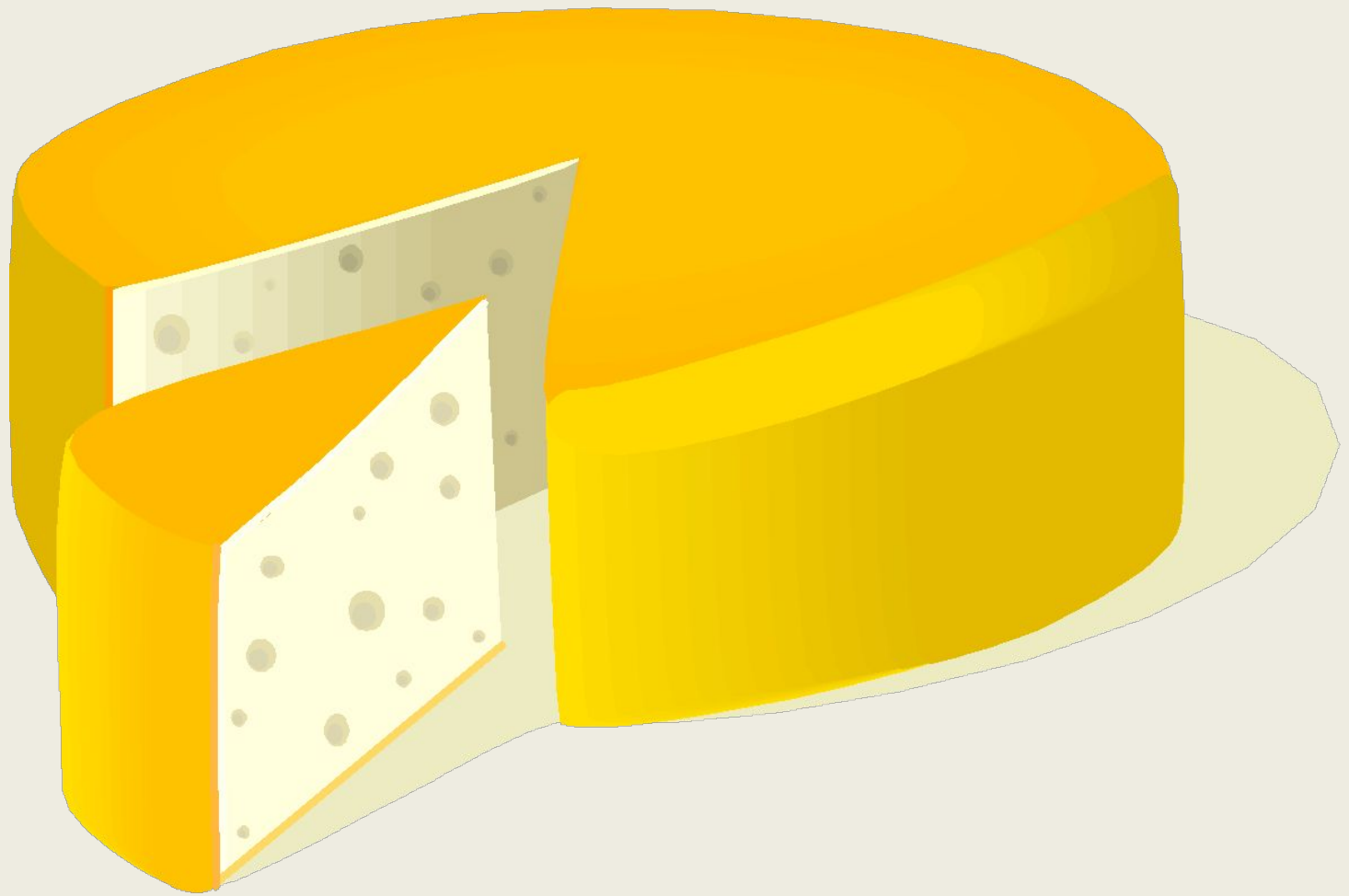
How **much** bread is there on the table?

Not much / A lot

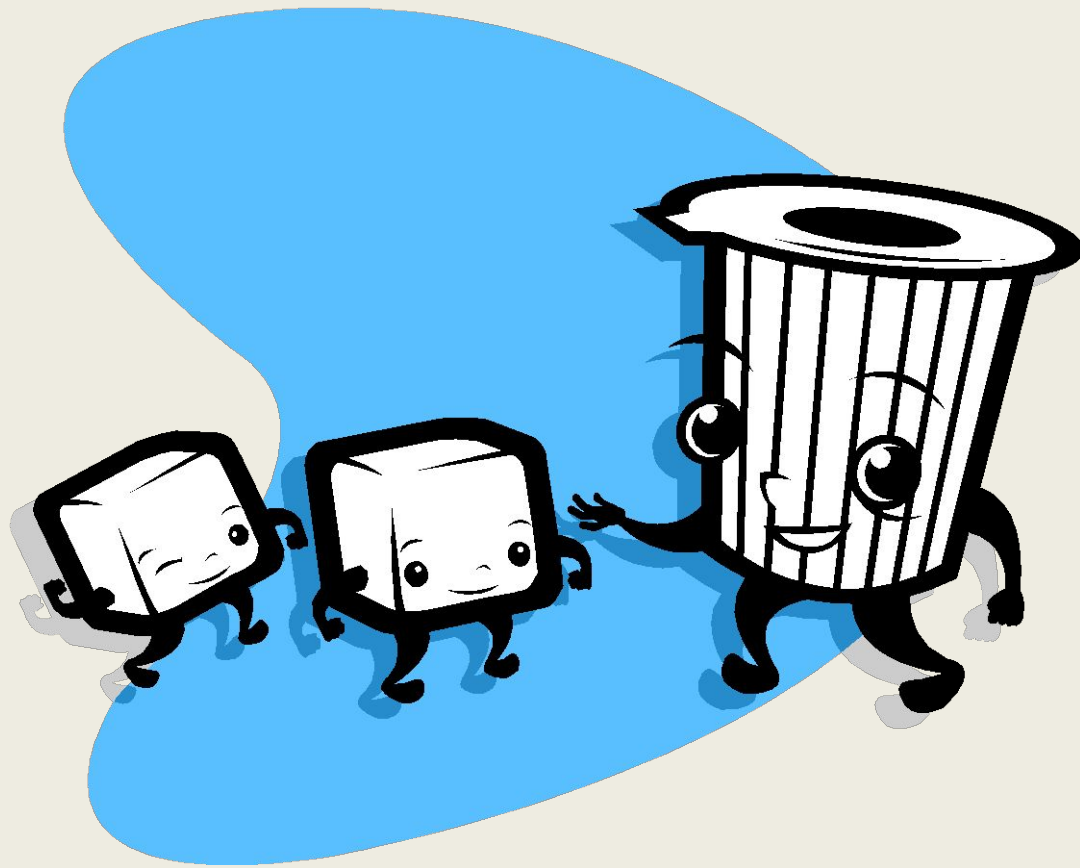


**UNCOUNTABLE NOUNS**

**НЕИСЧИСЛЯЕМЫЕ  
СУЩЕСТВИТЕЛЬНЫ  
Е**



**cheese**



**sugar**





butter

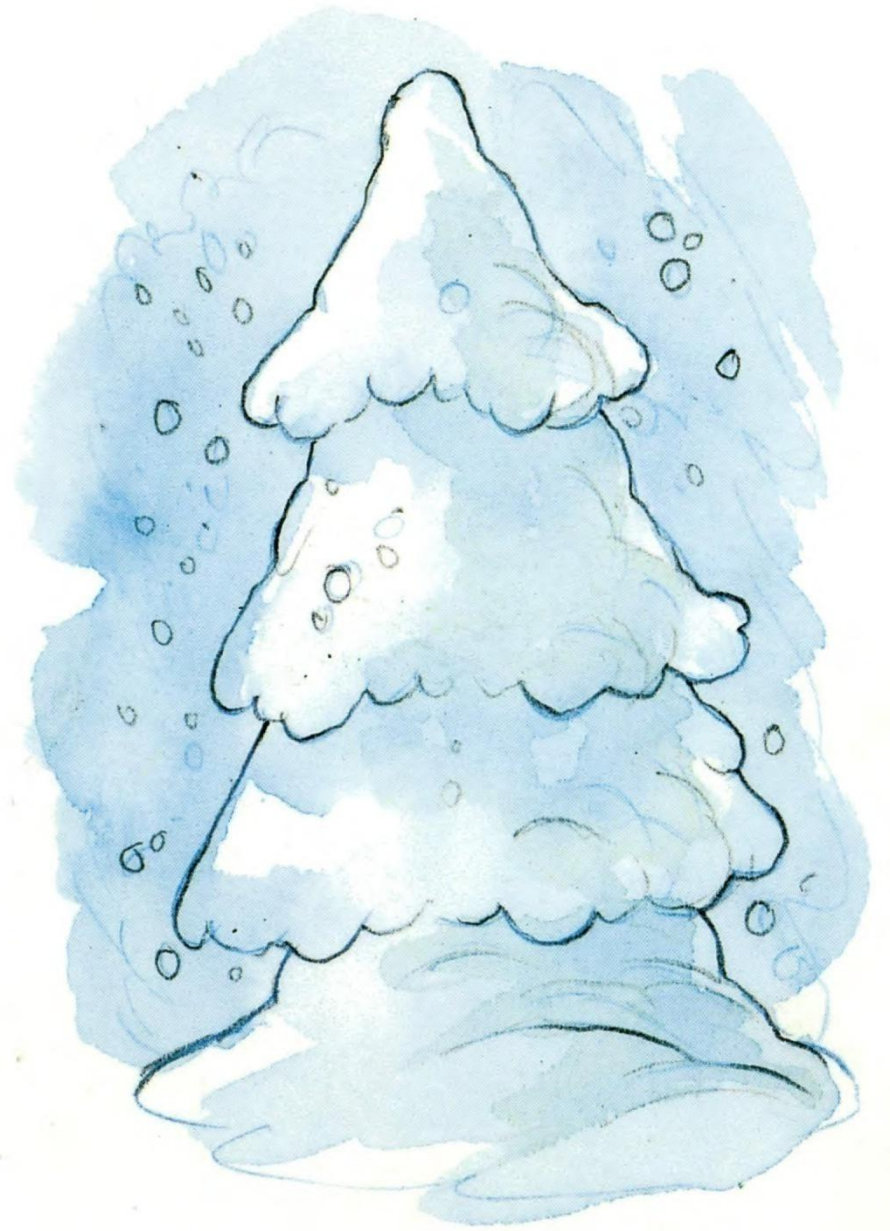


salt



**rain**

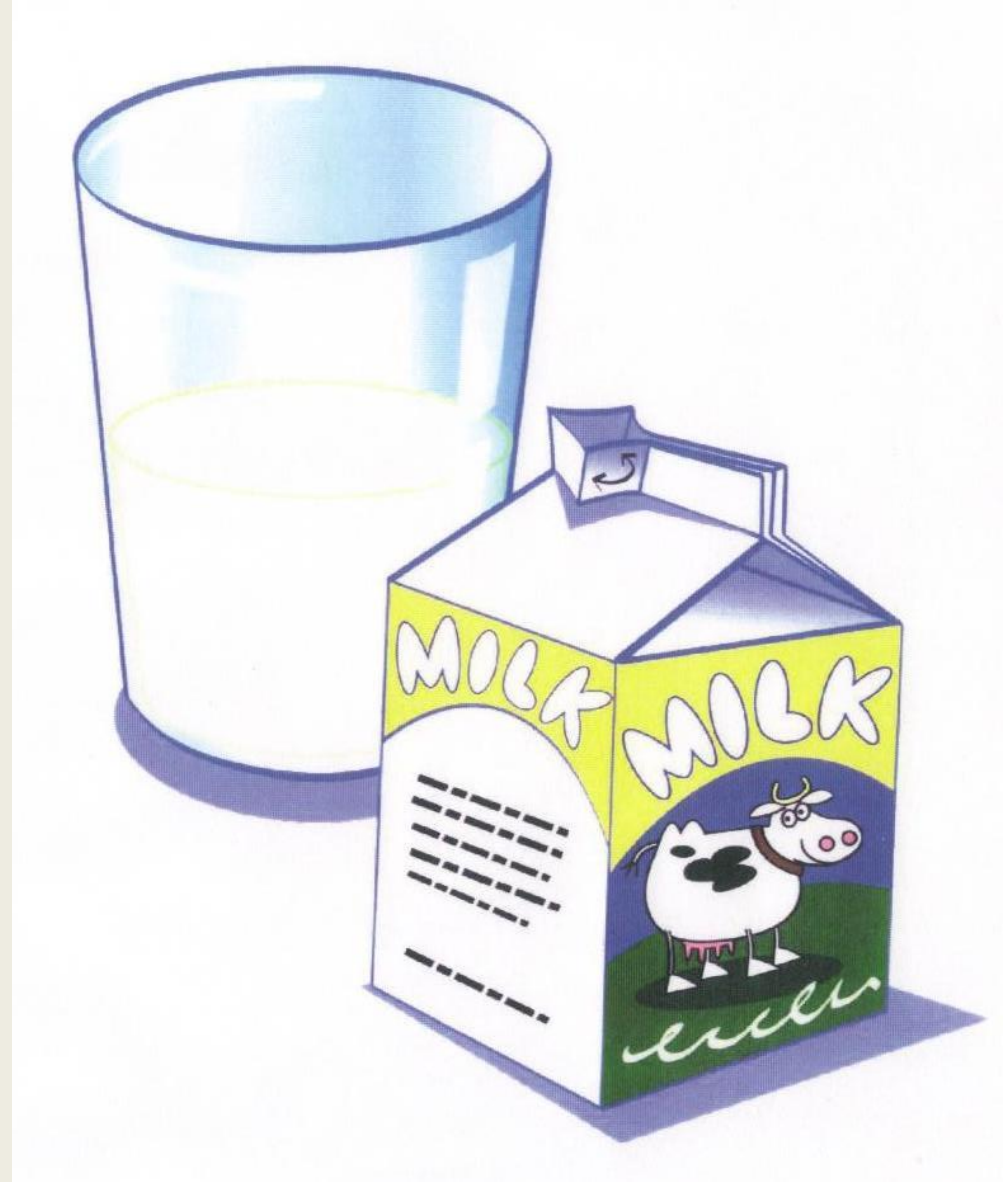
**snow**





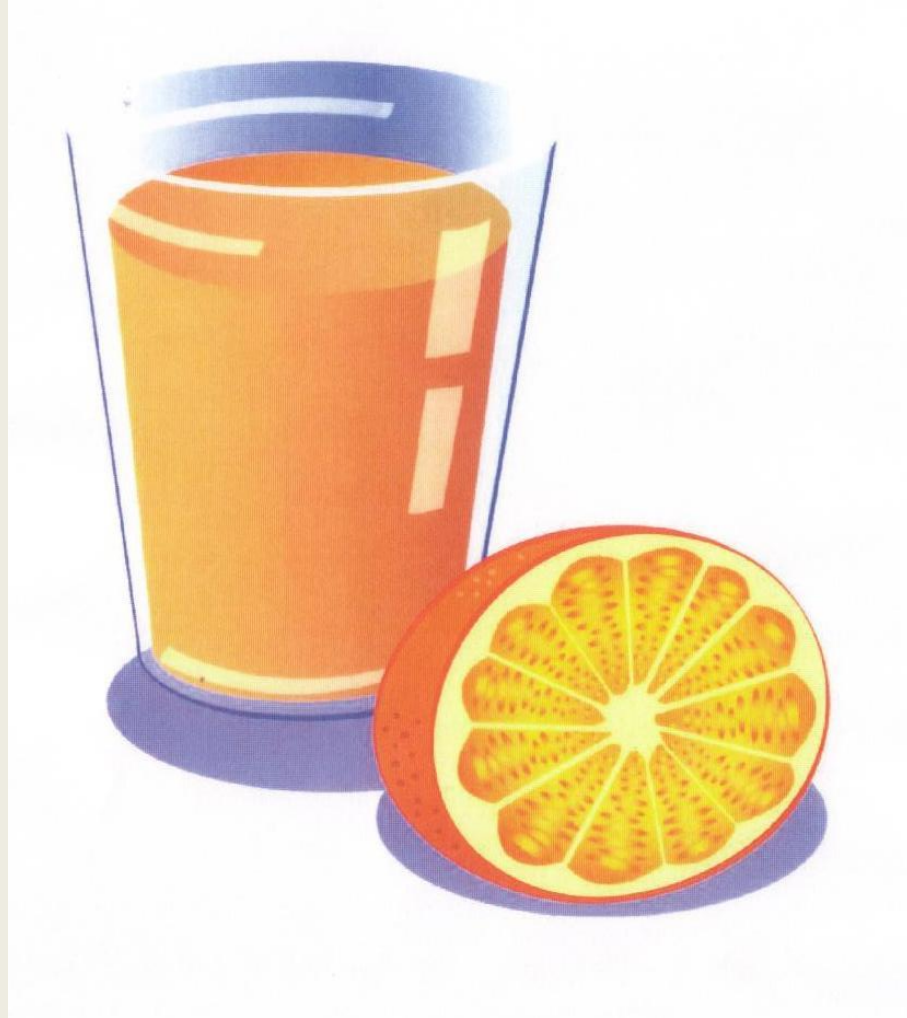
**water**

milk





lemonade



**juice**





**tea**



**coffee**





**jar**

**a jar of honey**



jug

a jug of milk



**piece**

**a piece of cheese**



Corolev.natalya

© Страна Мастеров

**bottle**

**a bottle of wine**



**loaf**

**a loaf of bread**





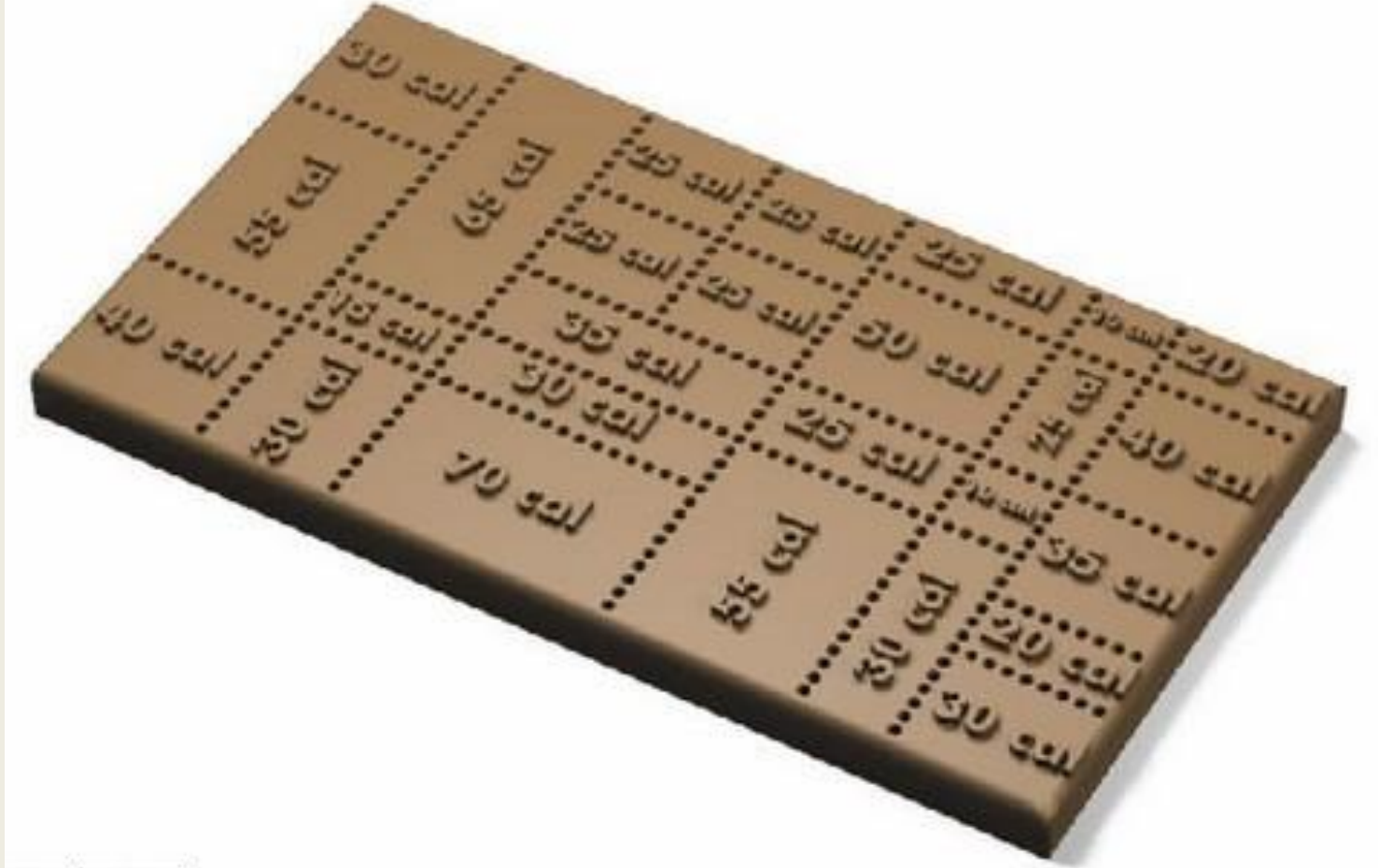
**cup**

**a cup of coffee**



**glass**

**a glass of juice**



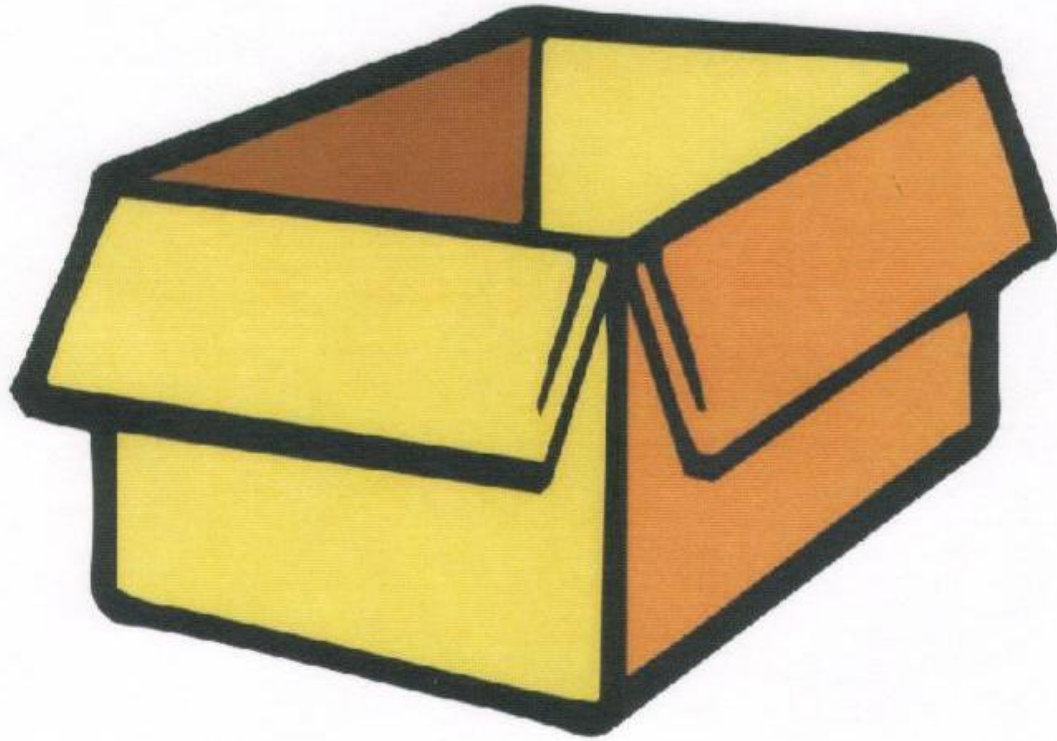
**bar**

**a bar of chocolate**



**bowl**

**a bowl of salad**



**carton**

**a carton of bisquits**



**slice**

**a slice of bread**



**can**

**a can of soup**



**packet**

**a packet of biscuits**





**tin**

**a tin of beans**

**a lot of**

**many**

**much**

**МНОГО**

**a few**

**несколько**

**a little**

**немного,**

	Исчисляемые существительн ые	Неисчисляемы е существительн ые
утверждени е	A lot (of)	A lot (of)
вопрос	How (many)...?	How (much)...?
отрицани е	many	much



**Not many / Not Much / A lot**



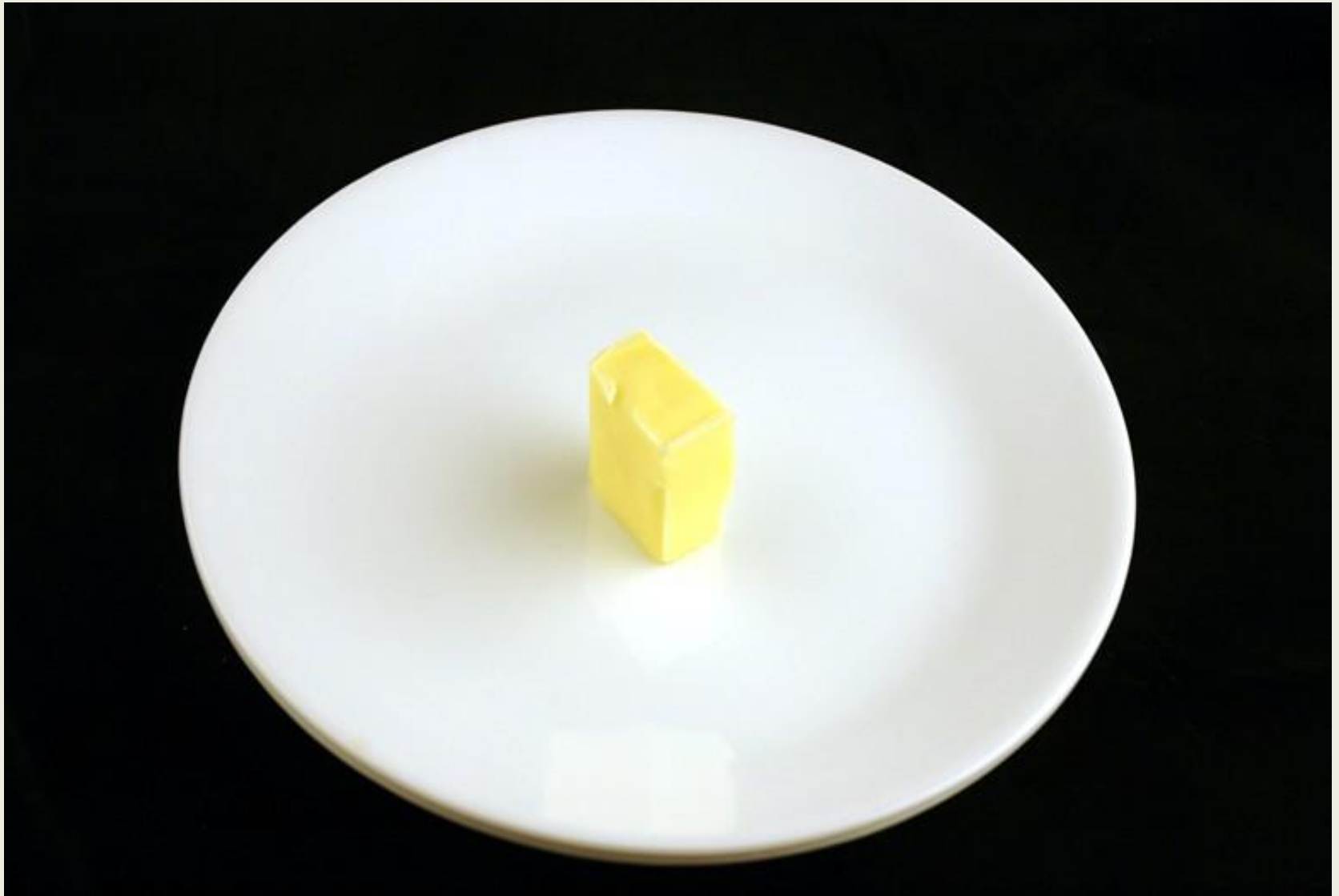
**Not many / Not Much / A lot**



**Not many / Not Much / A lot**



**Not many / Not Much / A lot**



**Not many / Not Much / A lot**





**Not many / Not Much / A lot**



**Not many / Not Much / A lot**



**Not many / Not Much / A lot**



**Not many / Not Much / A lot**



**Not many / Not Much / A lot**



**Not many / Not Much / A lot**