

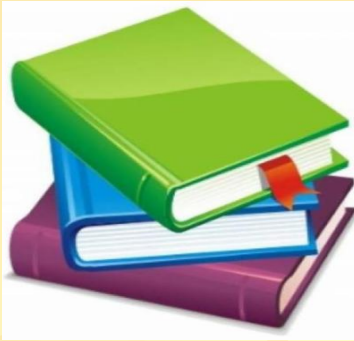
# A visit to the zoo

**The aim:** to learn - about animals

- about zoos

- how people help animals

**We shall :**



read



ask and answer  
questions



speak

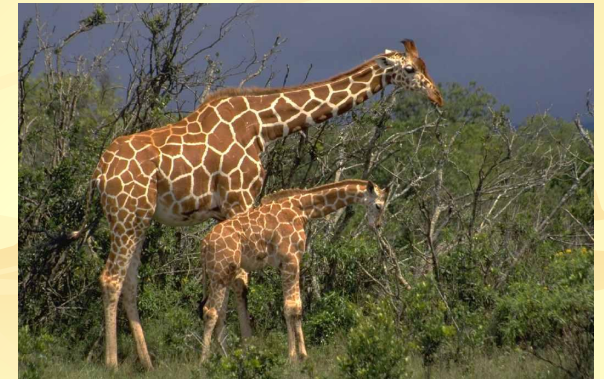


write



listen





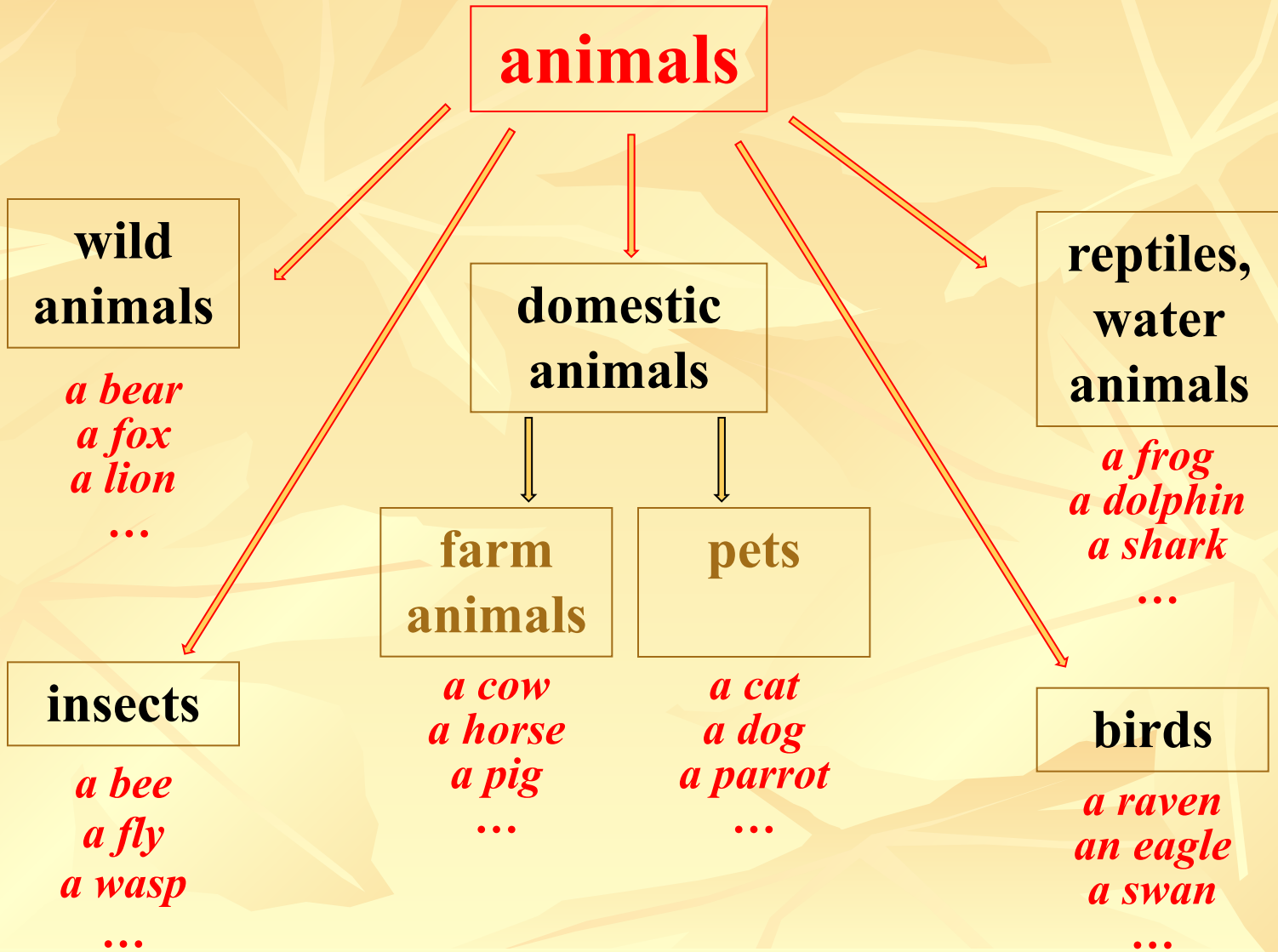
**a panda**

**a dolphin**

**a giraffe**



# What are kinds of animals?



# Read and find an extra word:



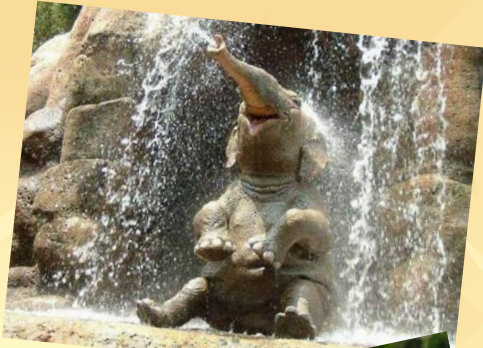
1. an elephant, a wolf, a dog, a hare, a lynx
2. a cat, a canary, a swan, a hen, an eagle
3. a horse, a pig, an elephant, a cow, a cockerel
4. a bee, a fly, a spider, a wasp, a cow
5. a fox, a dolphin, a rhino, an elk, a deer
6. a camel, a giraffe, a hippo, a spider, a deer
7. an ant, a butterfly, a ladybird, a frog, a bee

## My dream

I love all kinds of animals,  
Dogs and cats and rabbits.  
I love all kinds of animals,  
Despite their little habits.

If I had tons of money  
D'you know what I would do?  
I would buy lots of animals  
And have my own zoo.

But they wouldn't live in cages,  
They would be free to run around.  
And there's one thing they would feel  
And that is safe and sound.





# Zoos. What is good and what is bad.

1. Animals live in small cages.
2. Zoos help save endangered animals.
3. Animals don't have enough space.
4. People feed baby animals.
5. There are no forests for the animals in the zoo.
6. Animals can't eat their favourite food.
7. Animals get tired (устают) of visitors.
8. People can watch different kinds of animals and insects.
9. Children can watch exotic animals.
10. Zoos help scientists to learn more about living things.
11. Animals can not run, jump, fly.





# Zoos. What is good and what is bad.

## good

2. Zoos help save endangered animals.
4. People feed baby animals.
8. People can watch different kinds of animals and insects.
9. Children can watch exotic animals.
10. Zoos help scientists to learn more about living things.

## bad

1. Animals live in small cages.
3. Animals don't have enough space.
5. There are no forests for the animals in the zoo.
6. Animals can't eat the food that they have in the wild.
7. Animals get tired (устают) of visitors.
11. Animals can not run, jump, fly.



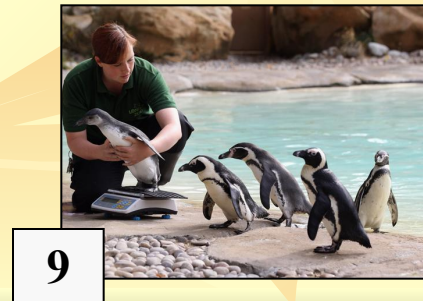
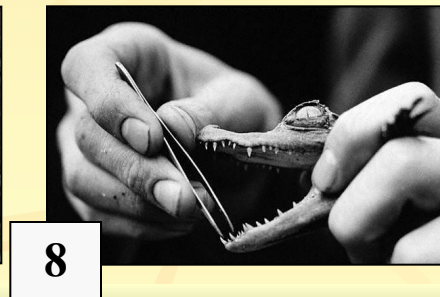
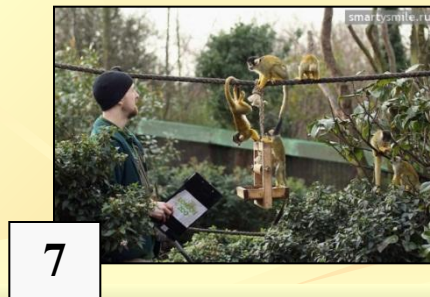
# What workers and volunteers do in the zoo

(match the words and the pictures, comment)

learn  
feed  
treat

clean cages  
look after  
watch

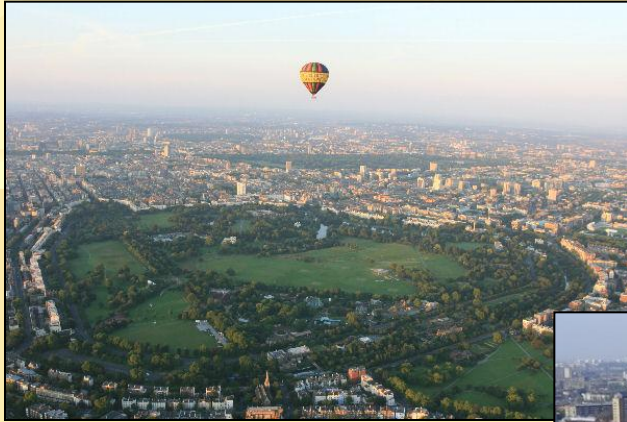
bring up babies  
play  
wash







# Ask questions and find information about:



London Zoo



Moscow Zoo



Yaroslavl Zoo



# Read and find out about London Zoo:

1. Regents Park

2. 1847

3. to save and help endangered animals

4. Whipsnade

London Zoo is the oldest zoo in the world. It started in 1828 in ...1... (Where did ...?) as Zoological society. It was opened for public only in ..2.. (When was ...?). Now the zoo has about 1600 animals of 755 species. The main aim of the society is ..3.. (What is ...?) . A lot of volunteers help and look after the animals. In 1931 the second part of the zoo was opened in ..4.. (Where was?). A lot of big animals like elephants, rhinos, giraffes live in Whipsnade Wild Animal Park.



# Read and find out about Moscow Zoo:

1. Russia

2. 1864

3. of native

4. 6000

Moscow Zoo is the first in ..1.. (Where is ...?). It was opened in ..2.. (When was ...?). The zoo started with 134 kinds of domestic animals, 153 kinds of wild animals and 7 kinds of reptiles. There were some exotic animals: two lions, two tigers, a leopard, a rhino and a crocodile. The best collection was ...3..(What animals was ...?): bears, wolves, foxes, hairs, squirrels and native birds. Now the zoo has ...4.. (How many animals does ...?) of 1001 species. People of Moscow love their animals very much and often visit the zoo.





# Read and find out about Yaroslavl Zoo:

1. 2008

2. a large territory

3. much space for living

4. 2500

The zoo in Yaroslavl isn't old – it was opened in ..1.. (When was ...?). It takes ..2..(What does ...?) with water pools and pine forest. Animals don't live in small cages. They have ..3..(What do ...?). Now the zoo has ..4.. (How many animals ...?) animals of 350 species. There are some attractions for visitors. Children can play and ride a horse or a camel. The zoo is very popular and people from different places come there.

# Answer the questions



**1. What was founded first?**

a/. The Zoological society of London

b/. London Zoo

**2. What is the date of birth of London Zoo?**

a/. 1826

b/. 1847

c/. 1828

**3. When was it opened for public?**

a/. 1828

b/. 1847

c/. 1853

**4. Where is London Zoo situated?**

a/. in Hyde Park

b/. in St James Park

c/. in Regent's Park

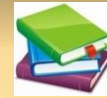
**5. What is the main aim of ZSL and London Zoo?**

a/. to watch the animals

c/. to collect exotic animals

b/. to help endangered animals

# Answer the questions



**6. How many kinds of animals does London Zoo have?**

a/. 5000

b/. 755

c/. 16802

**7. Where is the second part of the Zoo?**

a/. in Kensington Garden    b/. in St. James's park    c/. in Whipsnade

**8. What animals is Whipsnade for?**

a/. for baby animals    b/. for big animals    c/. for endangered animals

**9. What are endangered animals?**

a/. sick and rare

b/. exotic

c/. wild

**10. What are some species of endangered animals?**

a/. leopards

bears

tigers

b/. giraffes

goats

kangaroos

c/. elephants

rhinos

pandas





1. What was founded first?  
a. **the Zoological society**    b. London Zoo
2. What is the date of birth of London Zoo?  
a. 1826    b. 1847    **c. 1828**
3. When was it opened for public?  
a. in 1828    **b. in 1847**    c. in 1853
4. Where is London Zoo situated?  
a. in Hyde Park    b. in St James's Park    **c. in Regents Park**
5. What is the main aim of ZSL and London Zoo?  
a. to watch the animals    **b. to help endangered animals**    c. to collect exotic animals
6. How many kinds of animals does London Zoo have?  
a. 5000    **b. 755**    c. 16802
7. Where is the second part of the Zoo?  
a. in Kensington Garden    b. in St James's Park    **c. in Whipsnade**
8. What animals is Whipsnade for?  
a. for baby animals    **b. for big animals**    c. for endangered animals
9. What are endangered animals?  
**a. sick and rare**    b. exotic    c. wild
10. What are some species of endangered animals?  
a. leopards    b. giraffes    **c. elephants**  
bears    goats    **rhinos**  
tigers    kangaroos    **panda**