



**THE  
GEOGRAPHY  
OF UK AND  
ITS  
POLITICAL  
OUTLOOK**

---

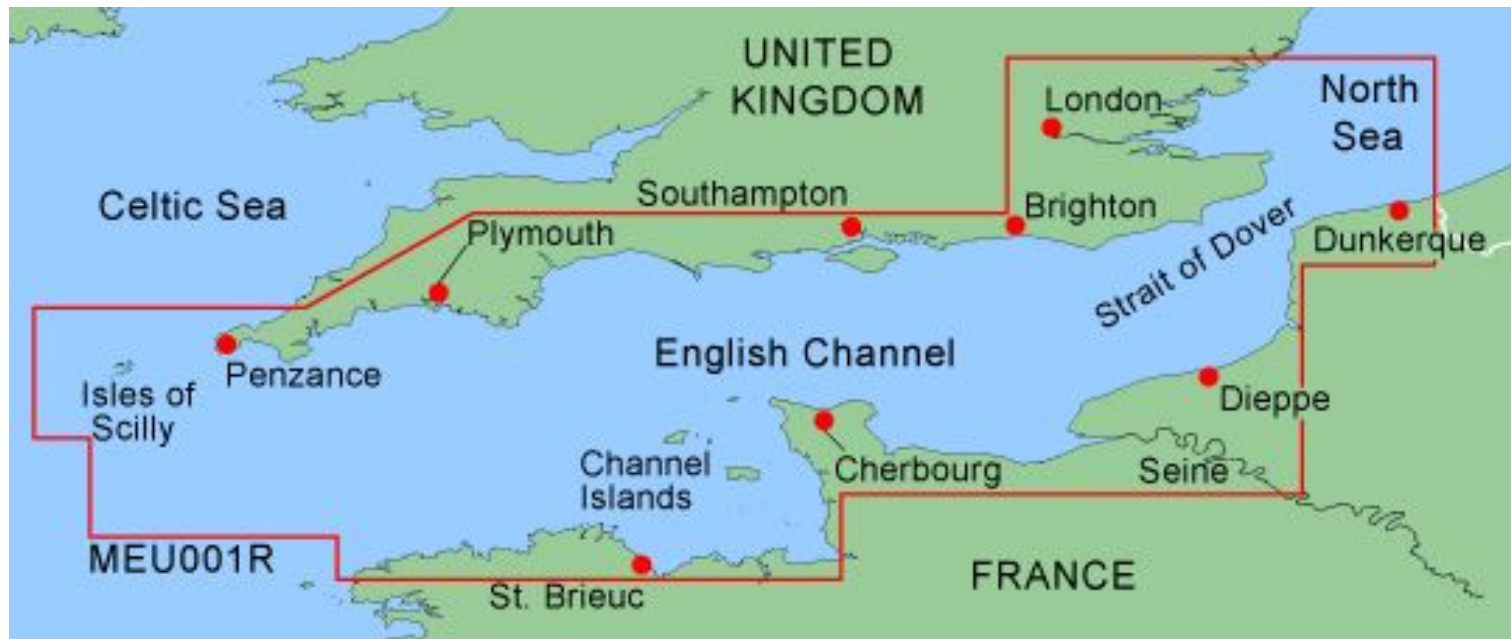
*England is a part of the United Kingdom and it is located on the island of Great Britain.*

*England is separated from France and continental Europe by the English Channel.*



However England and France are physically connected to each other by the Channel Tunnel

It is the longest undersea tunnel in the world.



There are also several large rivers in England - one of which is the famous and the longest river in England - Thames River which runs through London.



# Scotland



Located in the northern part of Great Britain, Scotland is the northern part of the United Kingdom



**Scotland can be divided into 3 areas:  
The Upper Lowlands - the north border  
between England and Scotland and an  
agricultural region with beautiful rolling hills.**



**The Central Lowlands - this area is the most industrial, urban, and populated, region containing the big urban cities like Edinburgh and Glasgow.**





**The Highlands - this region covers about 50% of Scotland and has include Ben Nevis, the tallest peak, which rises to 1,343 meters.**



# Wales



**Wales is a mountainous country on the western side of Great Britain , and it is bordered by England to the east.**



**Wales is ruled by a prince. Traditionally the Prince of Wales is the eldest son of the English monarch.**



**This country is famous for deep caves, waterfalls, sandy beaches along the northern coast of Wales.**



The land is full of small lakes, rivers and streams. A few of the larger rivers are the Dee and Severn.



# Northern Ireland



The climate of Northern Ireland is temperate with mild winters and cool summers.





**The main rivers of Northern Ireland are the river Foyle and the Upper and Lower Bann.**



There is a lake Lough Neagh in the middle of the country, and it is the largest lake in the UK and among the top 40 largest lakes in Europe.



As Northern Ireland is a country, which is full a lot of mountains, it has a famous hill - Cavehill near the city of Belfast.



It is believed author Jonathan Swift inspired by Cavehill to make up sleeping giant in his Gulliver's Travels novel.

