



The
WALT DISNEY
Company

Walt Disney



1923-1928





THE WALT DISNEY CO.



*Disneyland
in Anaheim*



"PARTNERS"
"I THINK MOST OF ALL WHAT I WANT DISNEYLAND TO BE
IS A HAPPY PLACE...WHERE PARENTS AND CHILDREN
CAN HAVE FUN, TOGETHER."
Walt Disney

1956



*Disneyland
in
Paris*





New Orleans Square

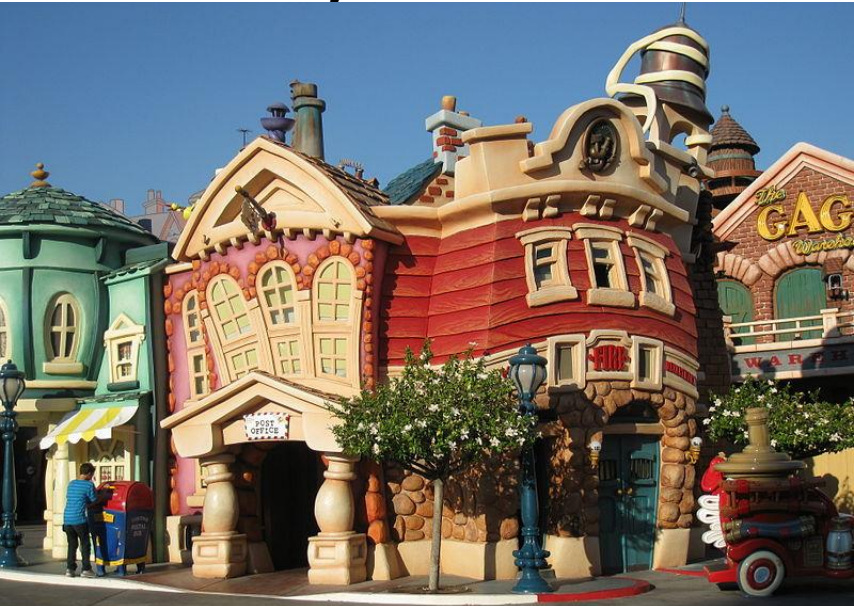


Tomorrowland



Main Street, U.S.A.

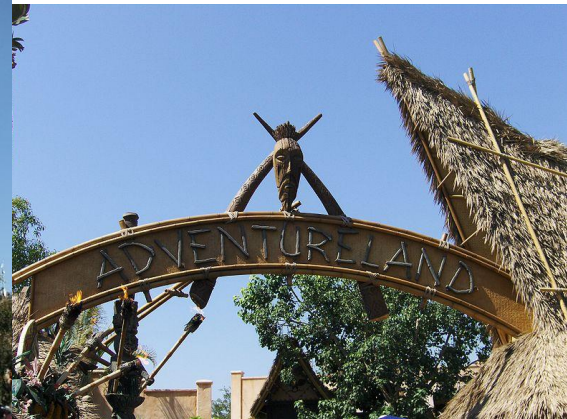
Mickey's Toontown



Fantasyland



Frontierland



Adventureland

*Disneyland
in Tokyo*



Affiliated
undertaking

Disney nature
**AFRICAN
CATS**



LUCASFILM

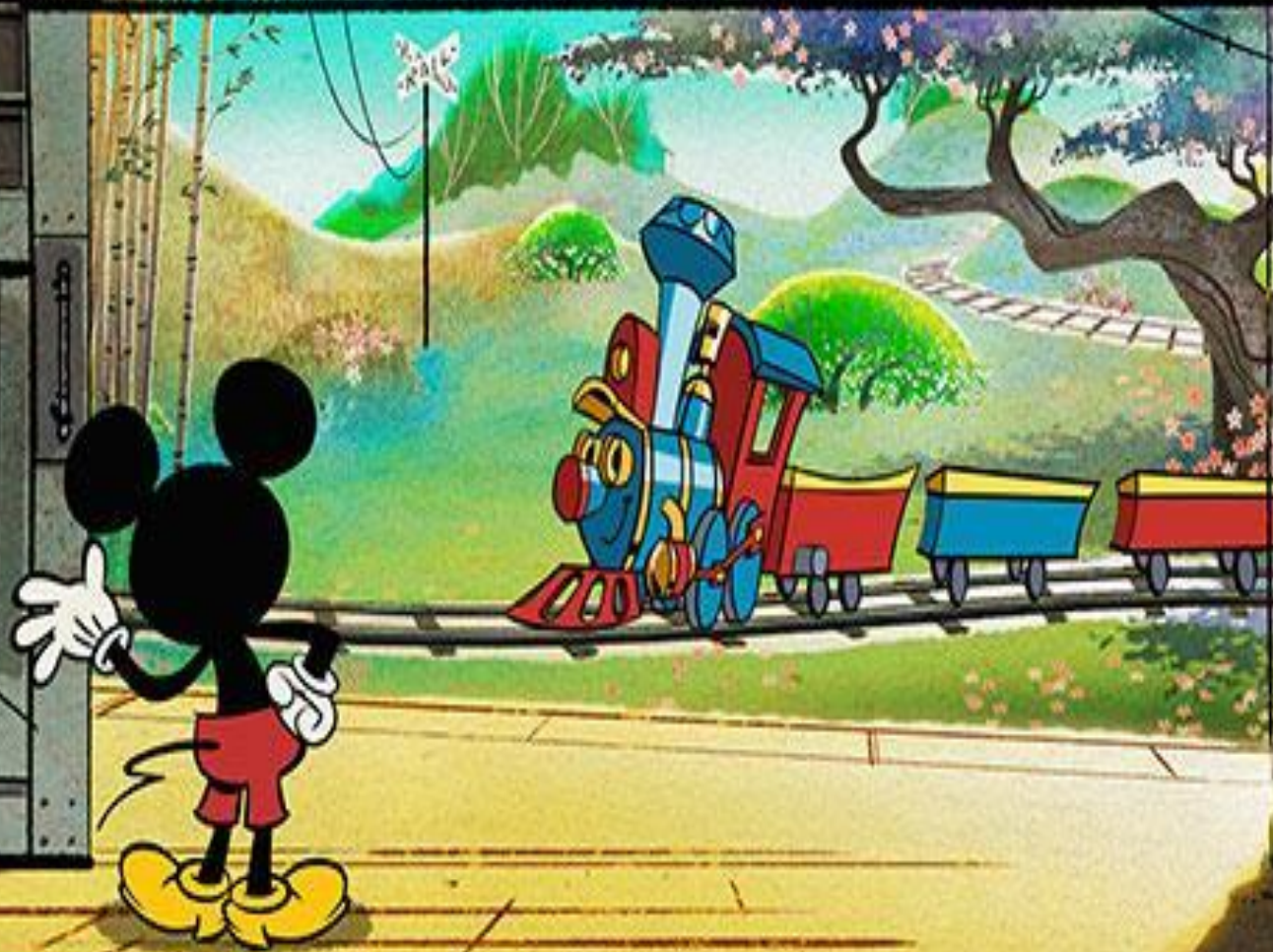
WALT DISNEY
P I C T U R E S

Competitors:

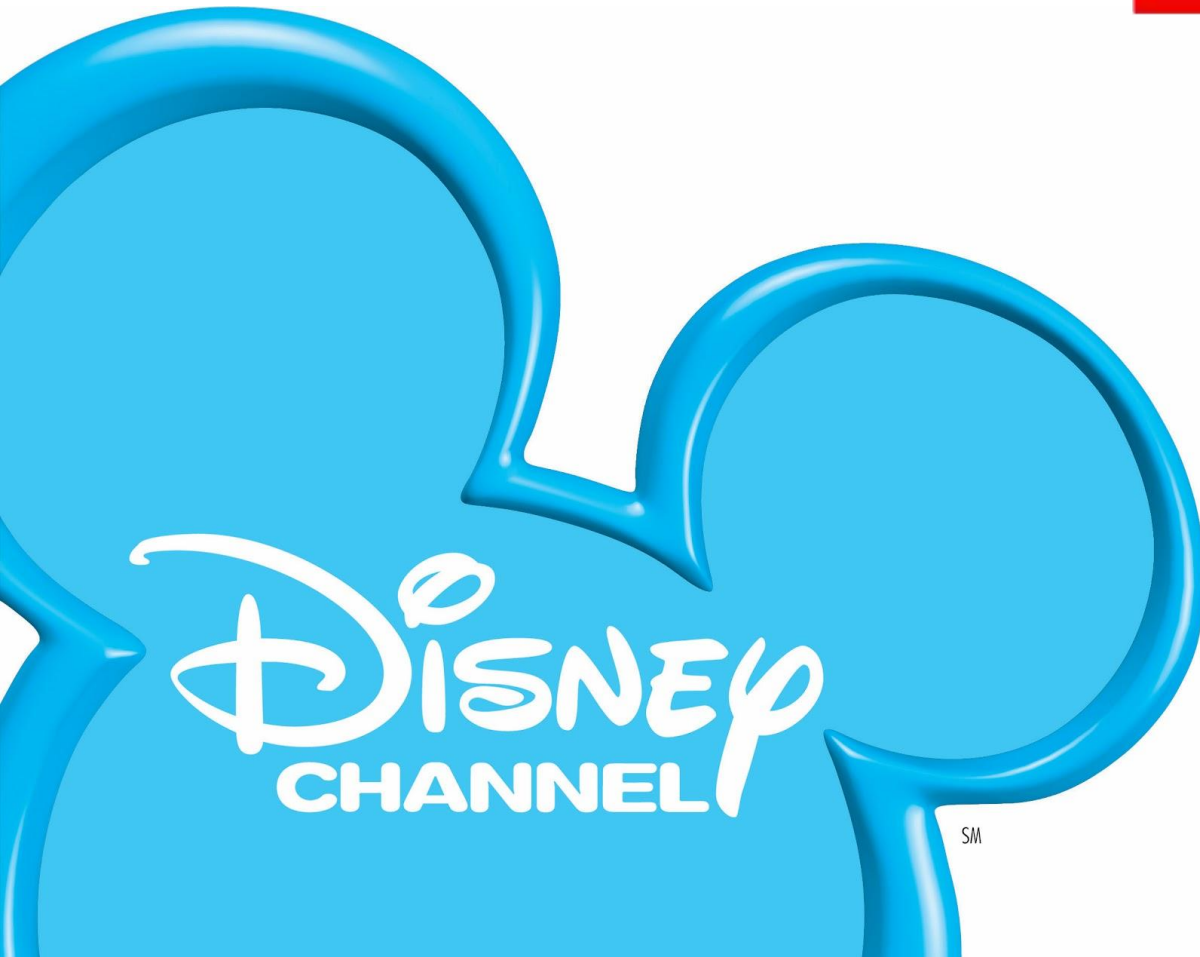


News Corporation



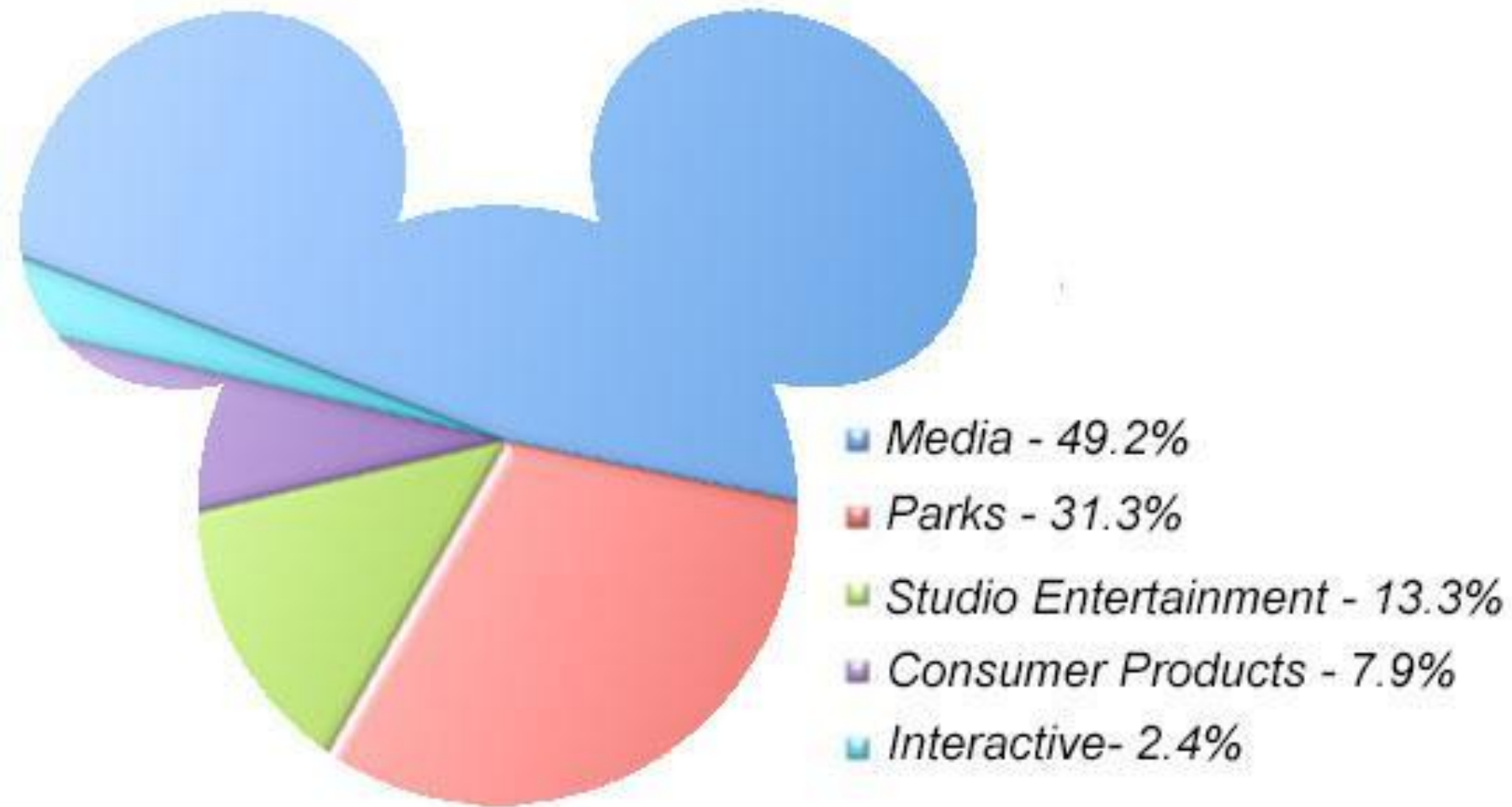


Theater

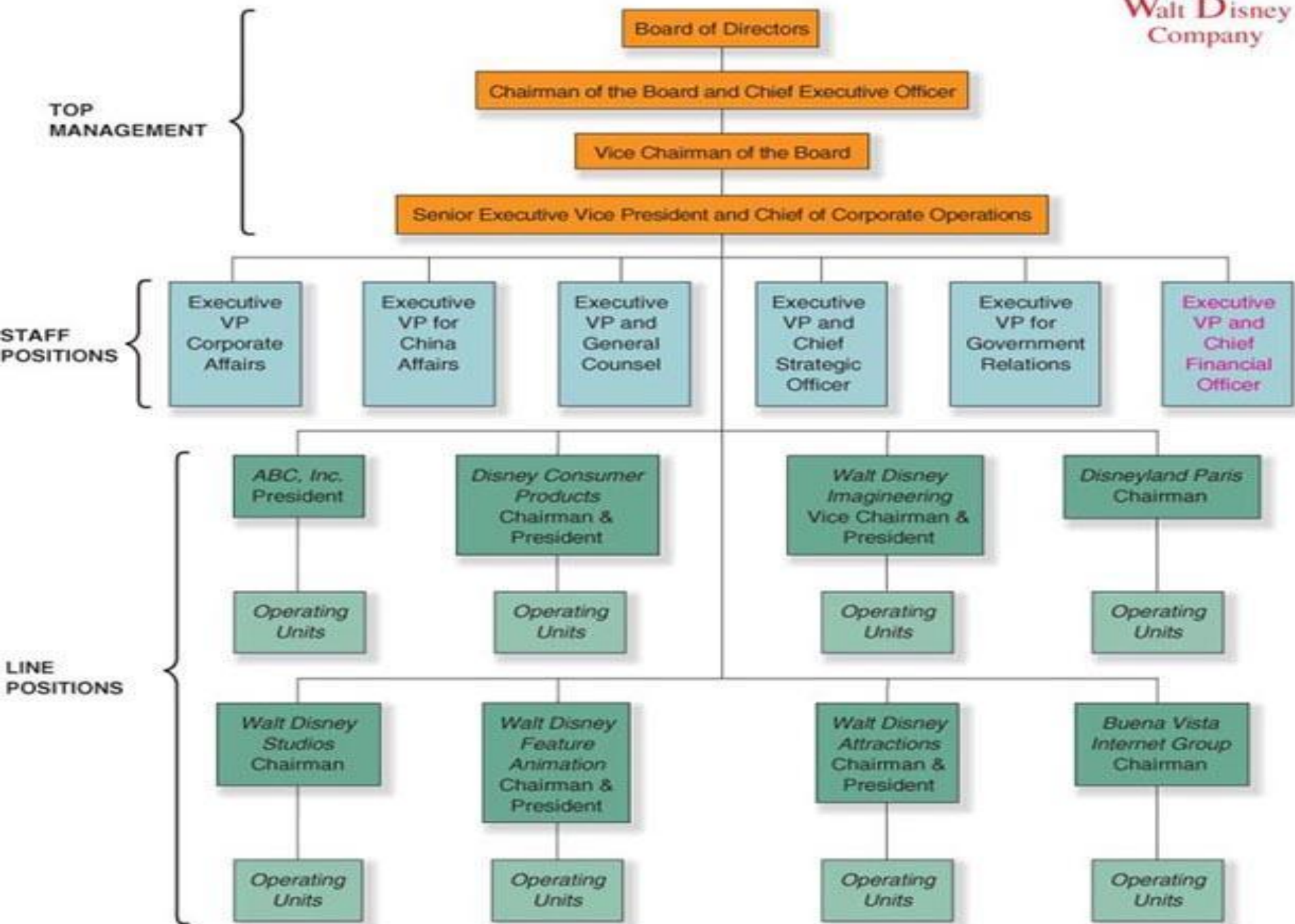


SM

Disney Media Networks



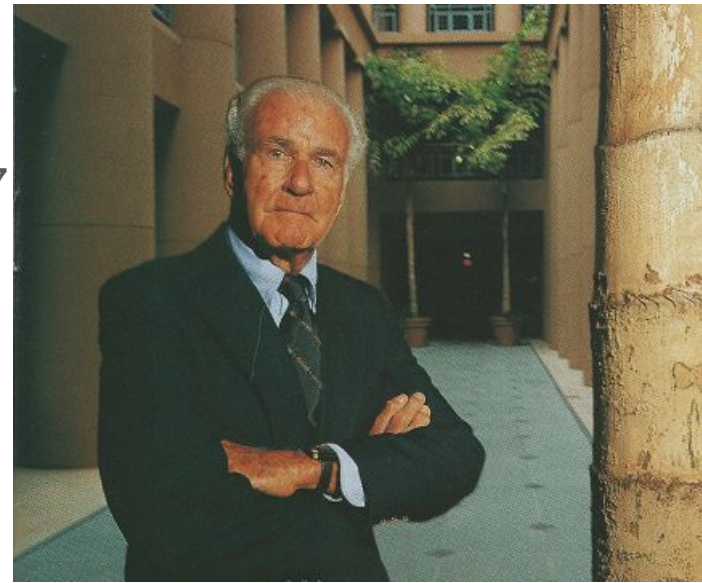
A. Organization Chart for The Walt Disney Company



Presidents



Card Walker
(1971-1977)



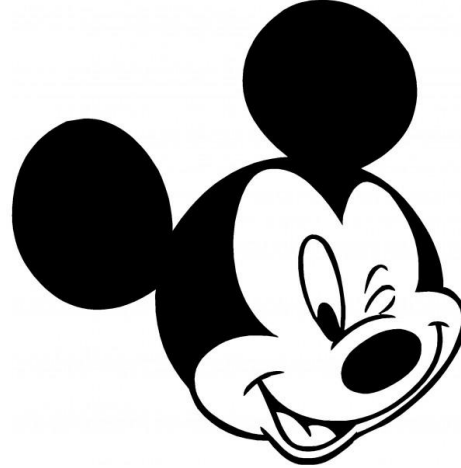
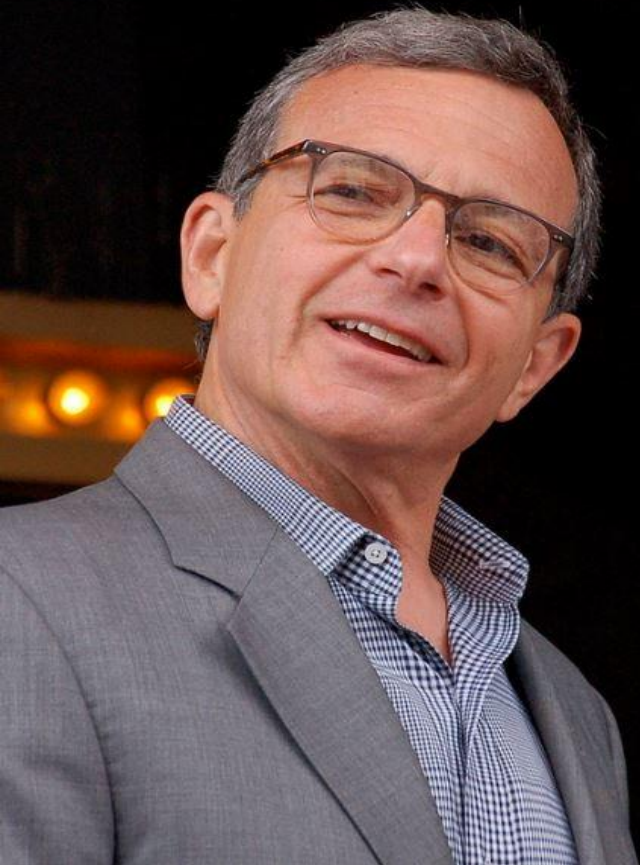
Walt Disney
(1923-1945)



Roy O. Disney
(1945-1966)



Donn Tatum
(1966-1971)



Frank Wells
(1984-1994)



Michael
Ovitz (1995-1997)



Ron W. Miller
(1978-1983)

Bob Iger

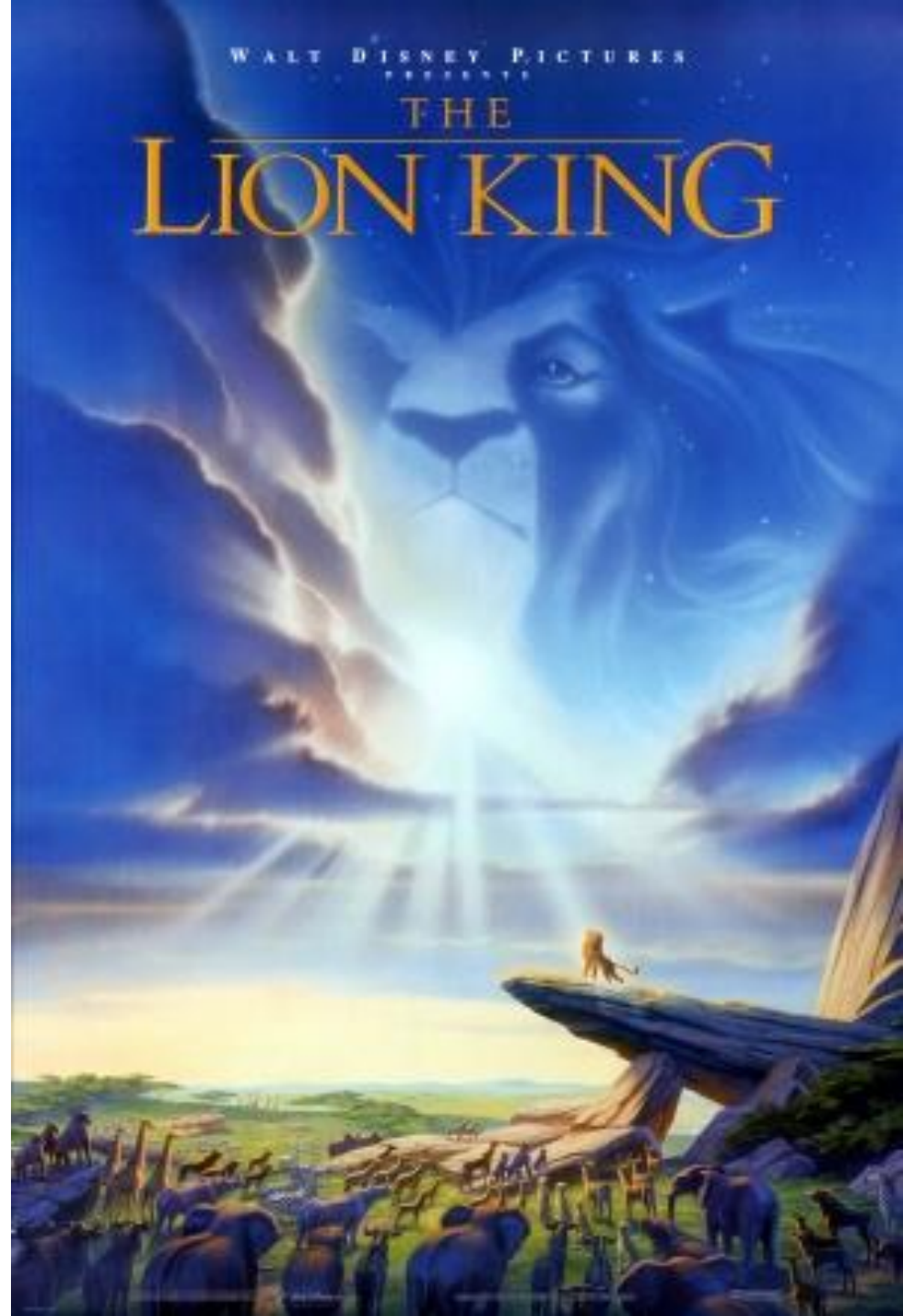




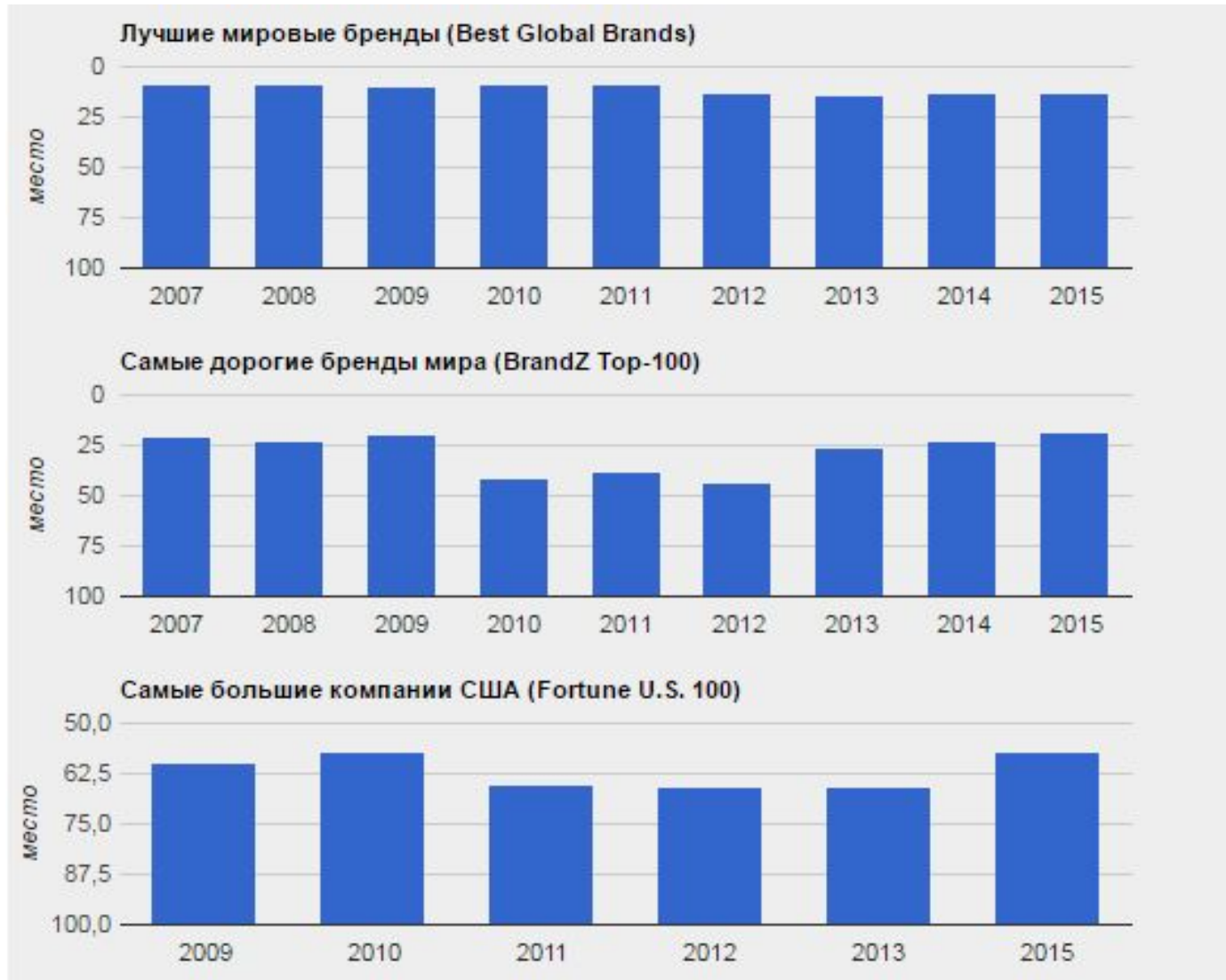
Films



Disney's
Lilo & Stitch



Rating



income

- 1991
 - **\$1,094 млрд**
-
- 2010
 - **\$3,963 млрд**

Thank you!