

*ML-2160 Series*

*SVC Training Document*



# Agenda

- I. Overview
  - I. General Specifications
  
- II. Feature
  - I. UI Operation
  - II. UI LED Status
  - III. Smart Panel & EPM
  - IV. Network Configuration
  
- III. Management
  - I. Tech Mode
  - II. Error Code
  - III. EDC
  - IV. F/W Upgrade

# Part. I Overview

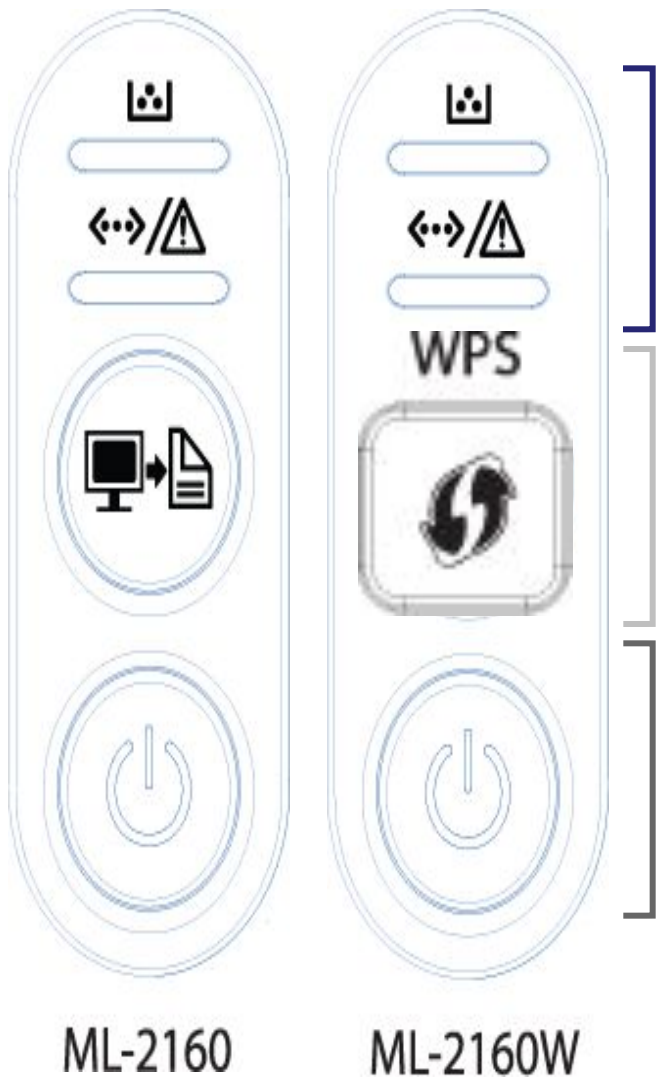
## I. General Specification

# I. General Specification

Model Name		Bluejay (ML-2165)	Bluejay-W(ML-2165W)
Overview	Function	Print	Print
General	Processor	Temujin, ARM926EJS (CPU 300MHz, System 100MHz)	Temujin-C, ARM926EJS 300MHz (CPU 300MHz, System 100MHz)
	Memory / Storage	ROM 0.5M, RAM 8M	ROM 8M, RAM 16M
	OS Compatibility	Windows 7/2000/XP(32/64bit)/2003(32/64bit)/Vista(32/64bit)/2008 Server(32/64bit), Various Linux OS, RedHat Enterprise Linux WS 4, 5 (32/64 bit), Fedora 5, 6, 7, 8, 9, 10, 11, 12, 13 (32/64 bit), SuSE Linux 10.1 (32 bit), OpenSuSE 10.2, 10.3, 11.0, 11.1, 11.2 (32/64 bit), Mandriva 2007, 2008, 2009, 2009.1, 2010 (32/64 bit), Ubuntu 6.06, 6.10, 7.04, 7.10, 8.04, 8.10, 9.04, 9.10, 10.04 (32/64 bit), SuSE Linux Enterprise Desktop 10, 11 (32/64 bit), Debian 4.0, 5.0 (32/64 bit), Mac OS 10.4~10.6, Sun Solaris 9,10 (x86, SPARC), HP-UX 11.0, 11i v1, 11i v2, 11i v3 (PA-RISC, Itanium), IBM AIX 5.1, 5.2, 5.3, 5.4, Windows 2000/XP/Vista/7/2003 Server/2008 Server, Mac OS X 10.4~10.6, Various Linux OS	
	Interface	High-Speed USB 2.0,	High-Speed USB 2.0, Wireless 802.11 b/g/n
Driver	Printer	SPL	SPL
Consumables	Yield	Standard : Average Cartridge Yield 1,500 standard pages Initial yield : Average Cartridge Yield 700 standard pages Declared cartridge yield in accordance with ISO/IEC 19752	Standard : Average Cartridge Yield 1,500 standard pages Initial yield : Average Cartridge Yield 700 standard pages Declared cartridge yield in accordance with ISO/IEC 19752
	Type	1-piece Cartridge	1-piece Cartridge
	Model Code	MLT-D101S	MLT-D101S
Application S/W	SmarThru	EPM for Windows/Mac, SmartPanel for Linux	EPM for Windows/Mac, SmartPanel for Linux
	Smart Panel	EPM for Windows/Mac, PSU for LINUX	EPM for Windows/Mac, PSU for LINUX
	Printer Settings Utility	NA	NA
	Network Scan	NA	NA
	Easy Printer Manager	Yes(Windows, MAC), MAC은 IDS_MAC에서 지원 예정	Yes(Windows, MAC), MAC은 IDS_MAC에서 지원 예정
	Scan Assistant	NA	NA
	PC-FAX	NA	NA
	Direct Printing Utility	No	No

# Part. II Feature

- I. UI Operation
- II. UI LED Status
- III. Smart Panel & EPM
- IV. Network Configuration



**Status Area**  
Toner LED  
Status LED

**Special Area**  
Print Screen  
WPS

**Power Area**  
Soft Power

Print Screen Pressed time	Status LED	Output
0.5~2 (sec)	Fast Blinking	Full Screen
More than 2 sec	ON	Browser (Active Area)

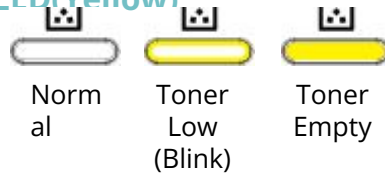
WPS Pressed time	Output
2~4 sec	Connected with PBC
More than 4 sec	Connected with PIN

# II. UI LED

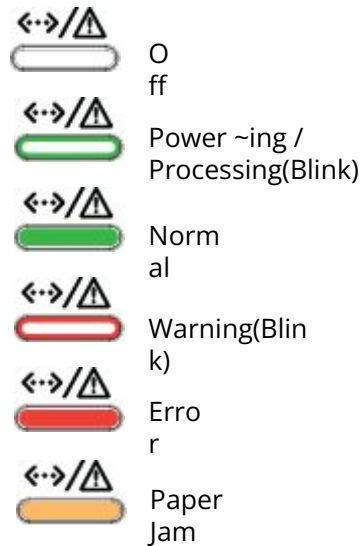


ML-2160

## Toner LED (Yellow)



## Status LED (Green/Red/Orange)



## Wireless/WPS LED (Blue)



## Soft Power LED (Blue)



ML-2160W

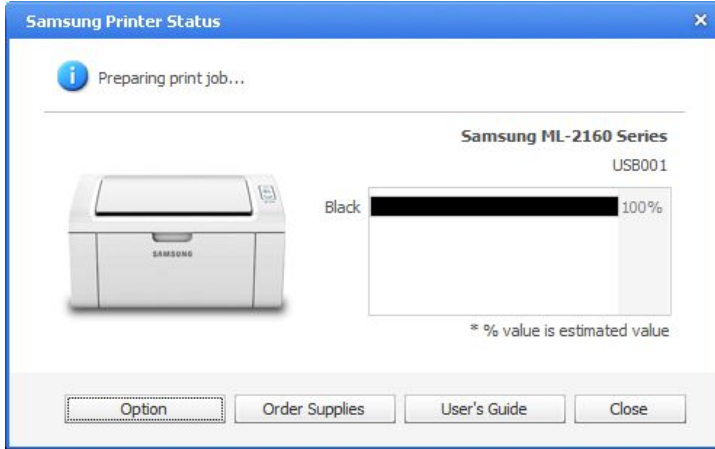
## II. Status LED Description

Category	Error Name	Error Code	Status LED	Toner Low LED	WPS LED
Normal	Ready	-	Green ON	Off	N/A
	Warming up... Please wait few minutes.	-	Green ON	Off	N/A
	Data Receiving from Host	-	Green Blink	Off	N/A
	Printing...	-	Green Blink	Off	N/A
	Job Cancel	-	Red Blink Slow	Off	N/A
	Sleeping...	-	Previous Status	Off	N/A
Error	Main Motor Error	A1-1110	Red ON	Off	N/A
	Thermistor Open Error	A3-3112	Red ON	Off	N/A
	Toner Low	C2-1110	Previous Status	Yellow On	N/A
	Toner Worm (Toner Empty)	C2-1120	Red ON	Yellow On	N/A
	Toner Empty (Toner Exhausted)	C2-1140	Red ON	Yellow On	N/A
	Toner Not Install	C2-1410	Red ON	Off	N/A
	Invalid Toner	C2-1510	Red ON	Off	N/A
	Pickup JAM in Tray	M1-1010	Orange ON	Off	N/A
	Paper Empty in Tray	M1-5012	Red ON	Off	N/A
	Jam inside of machine - Feeding Jam	M2-1110	Orange ON	Off	N/A
	Door Open	S2-4110	Red ON	Off	N/A
	Wireless Network is not installed.	S6-3121	Red ON	Off	N/A
	Network Failure - IP Address conflict	S6-3123	Red ON	Off	N/A
	Open Heat Error	U1-2320	Red ON	Off	N/A
	Low Heat Error	U1-2330	Red ON	Off	N/A
	Over Heat Error	U1-2340	Red ON	Off	N/A
	LSU Error - LSU Motor Not Ready Signal	U2-1112	Red ON	Off	N/A
	LSU Error - LSU Hsync Invalid	U2-1113	Red ON	Off	N/A
Wireless LED	Wireless connected	-	N/A	Off	On
	Wireless not connected	-	N/A	Off	Off
WPS Execution	Start WPS Connection	-	N/A	Off	Slow Blinking
	AP Connection	-	N/A	Off	Fast Blinking
	Success connection to AP	-	N/A	Off	On
	Fail to connect with error	-	N/A	Off	Off
	Fail to connect with disconnect	-	N/A	Off	Off

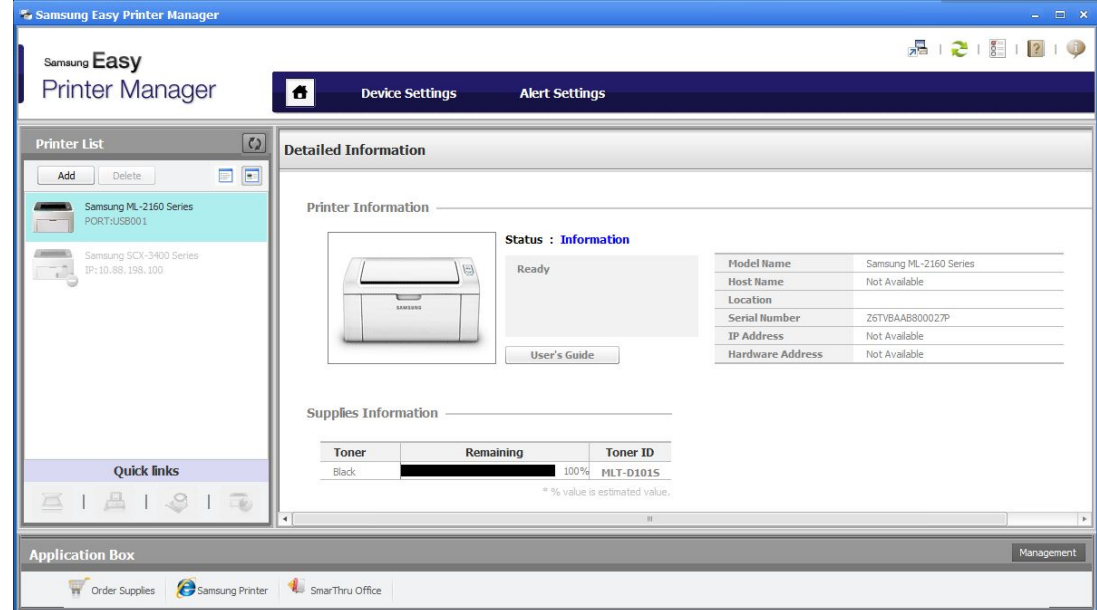


# III. Smart Panel & EPM

## □ Smart Panel



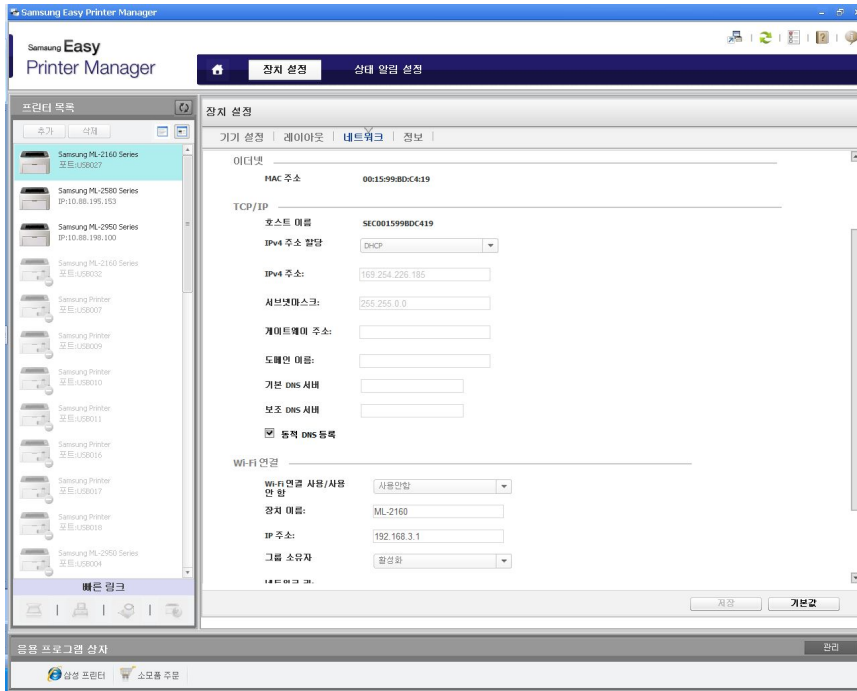
## □ EPM (Easy Print Manager)



# IV. Network Configuration (Only for Wireless Model)

## □ EPM

- Can Set Network Configuration (IP).
- “Print Network Configuration” Report



## □ Wireless Setup Program

- Can set wireless settings using CD installation program



# IV. Network Configuration (Only for Wireless Model)

## □ SWS

SyncThru Web Service™  
Embedded Web Server

ML-2160 Series

Information Maintenance

Home

Device Information

Status: Warning  
Alert: [1 Alert\(s\) Occurred](#)

Model Name	ML-2160 Series
Host Name	SEC001599BDC419
Serial Number	Z6THBAAB700027N
IP Address	10.88.198.100
MAC Address	00:15:99:BD:C4:19
Location	Not Configured
Administrator	Name Not Configured
	E-mail Not Configured

Recent Links  
[Home](#)

Copyright (C) 1995 Samsung Electronics, All rights reserved. SAMSUNG

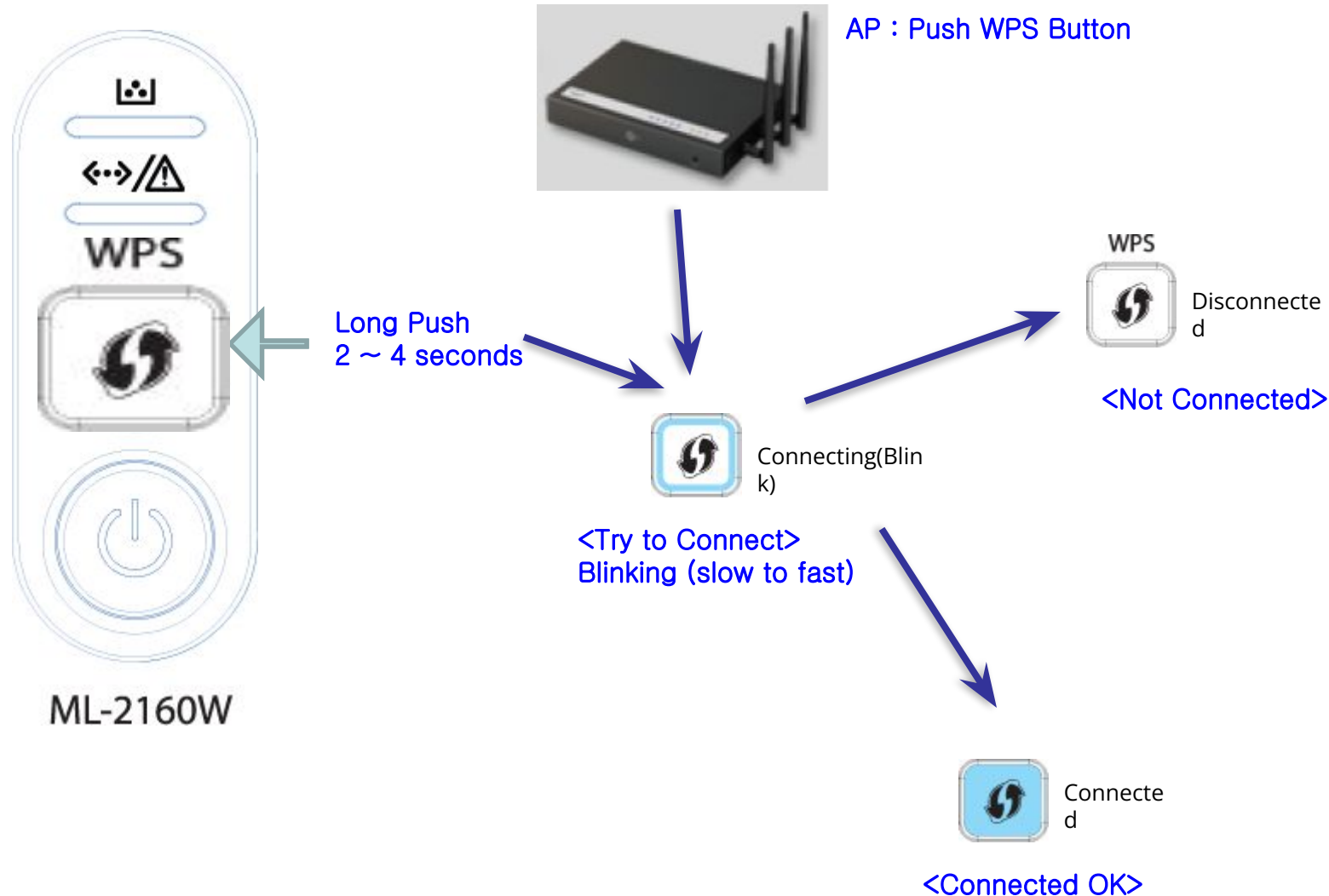
Done Internet | Protected Mode: On 100%

**Login as Admin**

ID : admin  
PW : sec00000

# IV. Network Configuration (Only for Wireless Model)

## □ WPS (PBC : Push Button Configuration)



# IV. Network Configuration (Only for Wireless Model)

□ WPS (PIN : PIN code in AP)

\*\*\* PIN code :

Can get in Network Configuration Report  
(Push Stop/Clear Button over than 2  
sec.)

AP : Push WPS Button



ML-2160W



Long Push  
More than 4 seconds

WPS



Disconnecte  
d

<Not Connected>



Connecting(Blin  
k)

<Try to Connect>  
Blinking (slow to fast)



Connecte  
d

<Connected OK>

# Part. III Management

- I. Tech Mode
- II. Error Code
- III. EDC
- IV. F/W Upgrade

# I . Tech Mode

- There is no tech mode

## II. Error Code

Error Code	Report String	Smart Panel Message (English)
C2-1110	Toner Low	Prepare new toner cartridge.
C2-1120	Toner Empty	Replace with new toner cartridge.
C2-1140	Toner Exhausted	End of life, Replace with new toner cartridge.
C2-1410	Toner Not Installed	Toner cartridge is not installed. Install the cartridge.
C2-1510	Toner Invalid	Toner cartridge is not compatible. Check user's guide.
M2-1110	Inside Jam In Machine	Paper jam inside of machine.
M2-1116	Pickup Jam or Paper Empty In Tray	Paper jam or empty in tray. Please open and close cover.
M2-1317	Wrap Jam Inside Machine	Paper jam inside of machine.
S1-5221	Wireless Not Installed	Wireless network card is not installed. Install the card.
S2-4110	Top Door Opened	Door is open. Close it.
S6-3123	IP Conflict	This IP address conflicts with that of other system. Check it.
U1-2320	Fuser Warmup Timeout	Fuser Unit Failure #U1-2320: Turn off then on.
U1-2330	Fuser Low Heat Error	Fuser Unit Failure #U1-2330: Turn off then on.
U1-2340	Fuser Over Heat Error	Fuser Unit Failure : #U1-2340. Turn off then on.
U2-1112	Black LSU Lock Error	LSU Unit Failure: #U2-1112. Turn off then on.
U2-1113	Black LSU Hsynch Error	LSU Unit Failure: #U2-1113. Turn off then on.
C2-1710	Crum General Error	Toner Cartridge Failure: #C2-1710. Call for service
C2-1711	Crum Termination Error	Toner Cartridge Failure: #C2-1711. Call for service
C2-1712	Crum Miss Issuing Error	Toner Cartridge Failure: #C2-1712. Call for service



- Engine Diagnostic

Code-Sec	Displayed Name	Meaning	Bluejay/Egmont
100-0000	Main BLDC Motor	Main BLDC Motor is On/Off	Yes
101-0010	T1 Pick-Up Clutch	Engages drive to pick up a paper from tray1.	Yes
102-0290	Feed Sensor	Detect when a paper is at Feed sensor.	Yes
105-0030	Black MHV Bias	Black MHV bias voltage on at normal drive level	Yes
106-0030	Black Dev Bias	Black Dev bias voltage on at normal drive level	Yes
107-0030	Black THV Bias	Black THV bias voltage on at normal drive level	Yes
107-0031	Black THV(-) Bias	Black THV bias voltage on at normal drive level	Yes
109-0000	Fuser Temperature A	Detects what the temperature A is on fuser.	Yes
109-0050	Fuser Bias	Fuser bias voltage on at normal drive level	Yes
110-0000	LSU Motor1 Run Ready	Detects if LSU motor1 runs at normal speed.	Yes
110-0060	LSU Motor1 Run	LSU Motor1 On/Off	Yes
110-0110	LSU LD Power4	LSU LD4 Power On/Off (black)	Yes

# III. F/W Upgrade

[Prepare to upgrade using USB]

- usblast2.exe: The tool for transferring firmware data to the machine.
- Firmware file for upgrading.

[Upgrade procedure]

1. Turn off the power on machine.
2. Plug in USB cable to the machine.
3. Turn on the power then check if the machine is in ready state.
4. Drag firmware file then drop to usblast2.exe.
5. Upgrading will start.
6. The machine will initialize itself after upgrading.

[Caution]

Downgrading to a lower version is not allowed due to security rule.

**※ Do not turn off the power during upgrade**

# VI. Firmware Upgrade

[SWS(SyncThru Web Service) Upgrade]

- Network connection is established.
- Prepare firmware to upgrade.

[Upgrade procedure]

1. Open web browser then input IP address of machine.

SyncThru Web Service™ Embedded Web Server

ML-2950 Series | Eco OFF | Site Map | Logout | English

Information Settings Security Maintenance

Home Information Desk

Device Information

Status: Normal  
Alert: [No Alert](#)

Model Name	ML-2950 Series
Host Name	SEC0015998403C0
Serial Number	PBA_I-DPT_USBNo1

Administrator Information Required  
System Administrator Information is not configured. Please configure your information.  
[System Administrator](#)

The Change of Password Required

2. Log-In with admin account.  
ID : admin, PSWD :

3. Maintenance  Firmware Upgrade

로그인 sec000000

SAMSUNG SyncThru Web Service™ Embedded Web Server

ID

비밀 번호

LOGIN

SyncThru Web Service™ Embedded Web Server

Samsung ML-451x 501x Series | Eco OFF | Jobs | Direct Print

Information Job Management Settings Security Maintenance

Maintenance Firmware Upgrade

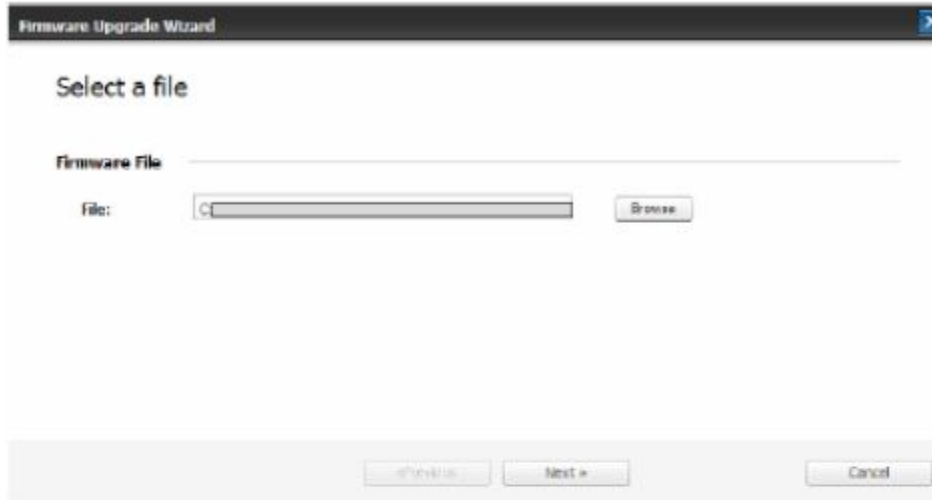
Upgrade Wizard

Version Information

Firmware	Version
Main Firmware Version	V2.02.01.06T 04-27-2011

# VI. Firmware Upgrade

4. Select firmware file using "browser" button and press next button.

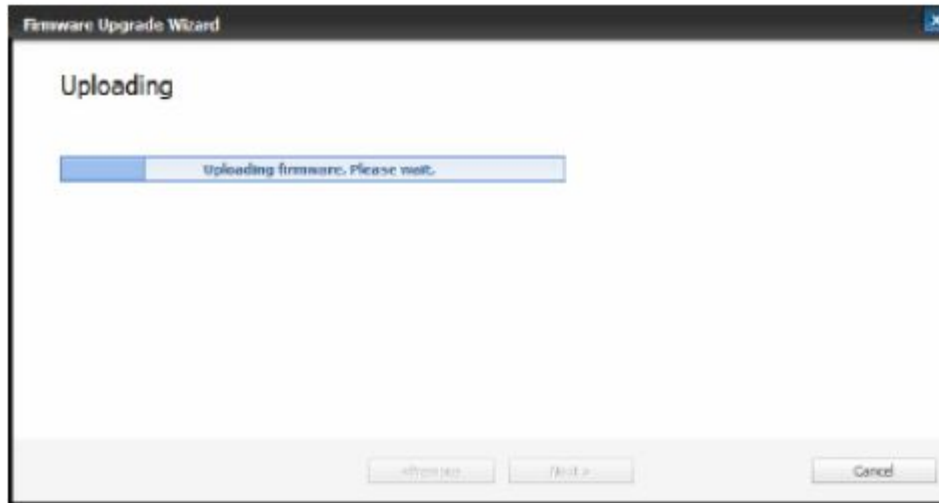


5. SyncThru will check verify firmware file and compare version and press next button.



# VI. Firmware Upgrade

6. Machine starts upgrading. SyncThru will return home page after upgrading is completed.



※ Do not turn off the power during upgrade

Q & A Thank You!!