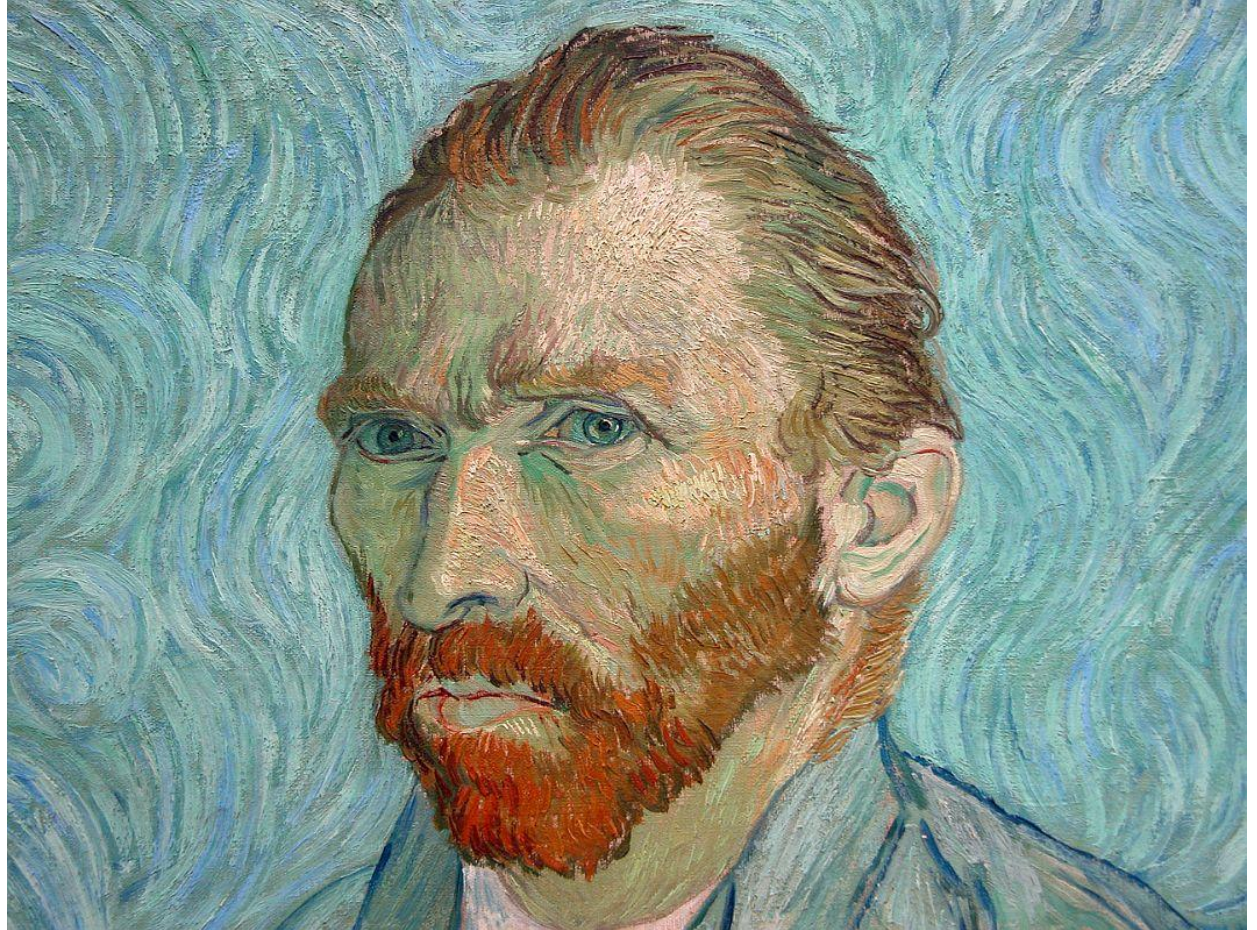


VINCENT VAN GOGH - SELF PORTRAITS.

SARDIYANOVA VICTORIYA 312 GROUP

Vincent Van Gogh, Self Portrait Remy, 1889.



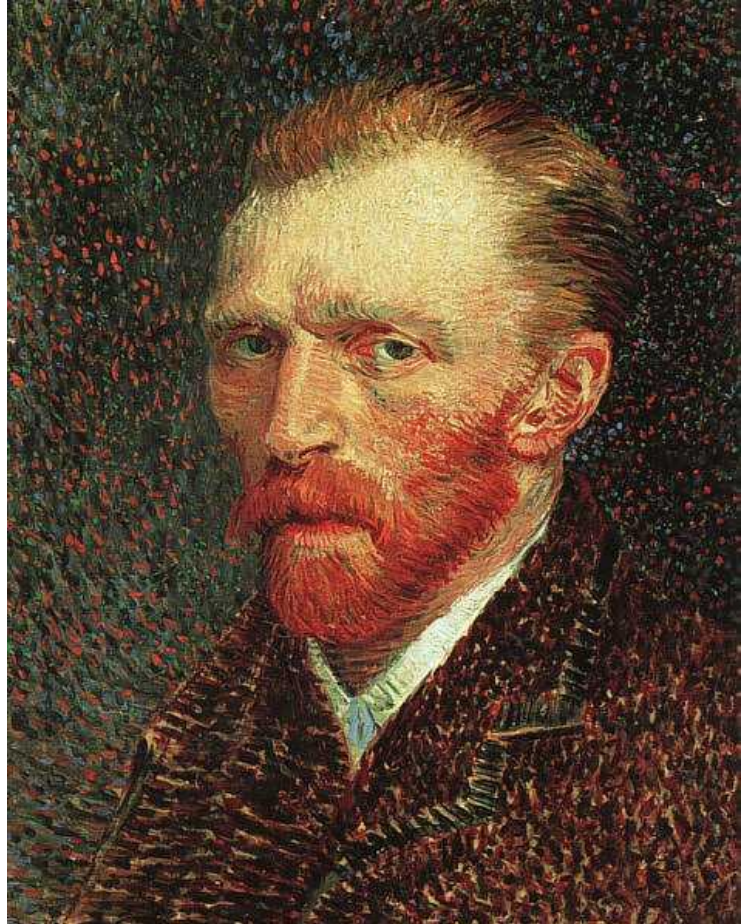
The Influence of Dutch Art.



This self portrait, painted before **Van Gogh's** move to Paris, is typical of his earlier paintings.

The dark earthy tones, which are characteristic of traditional **Dutch painting**, are used to create an image of humble dignity. This work is influenced by the art of Anton Mauve who was **Van Gogh's** cousin-in-law and tutor in the early 1880's. The style of the image, particularly the beard and hair, bear a strong resemblance to a Mauve himself.

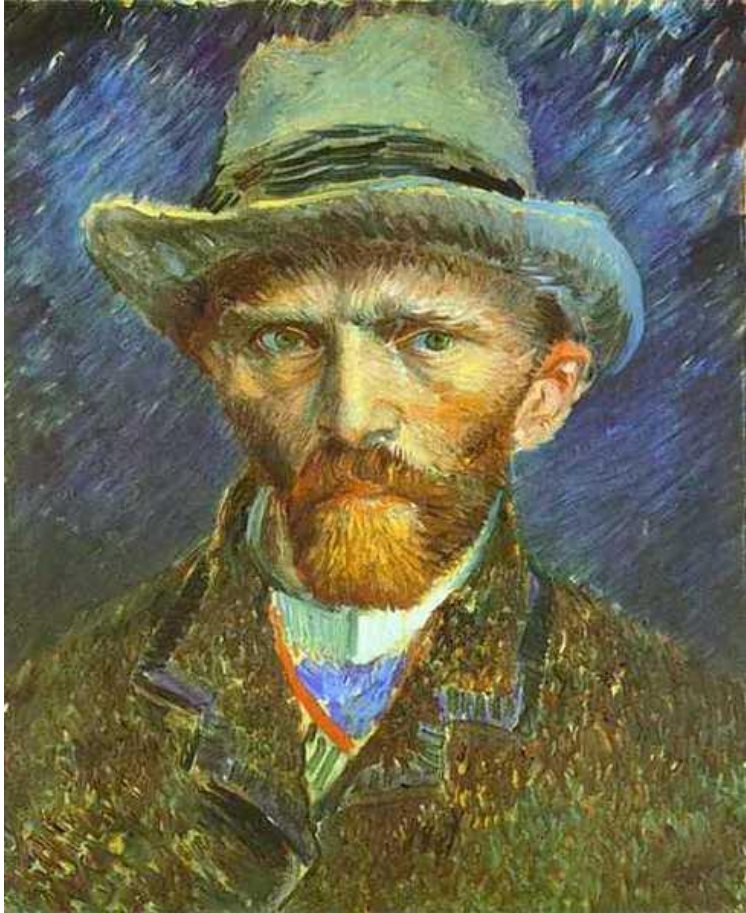
The Influence of Pointillism.



In Paris, **Van Gogh** was influenced by the artist **Georges Seurat** who devised a painting technique called *Pointillism*.

However, without Seurat's patient and analytical approach to the technique, Van Gogh's attempt at pointillism was generally clumsy, but it does start to reveal the main element of his true genius - a natural instinct for the expressive and emotional power of color.

The Influence of Impressionism.



The **Impressionists** tried to create the color of natural light by only using pure hues as seen in the colors of the **rainbow**. For example, **Van Gogh's** jacket is painted with red and green brushstrokes which fuse together on the canvas.

These mix optically in the eye of the spectator and increase the vitality of the color.

Vincent's Expressive Brushwork.



In this work we have a perfect balance between the vitality of **Van Gogh's** color and the energy of his **brushwork**.

The tones of the face form a traditional, realistic portrait. But the colors used to create these tones explode like a firework of red, orange, yellow, white, lilac, sky blue and green brushstrokes. He harnesses the energy of his brushstrokes by controlling their rhythm, size and direction.

The Emotional Impact of Color.



This painting, which was created within two weeks after the incident with his ear, is most certainly the calm **after the storm**. He takes a quiet and detached look at himself and expresses a feeling of **renewed hope** through his bright colors and simplified drawing. A clue to the origin of this bold style is found in the **Japanese woodblock print** on the wall behind him.

Thank you for attention.

