

**Karaganda State Medical University
The chair of foreign languages**

**PULMONARY TUBERCULOSIS.
THE PASSIVE VOICE. PRESENT
AND PAST TENSES THE PASSIVE
VOICE.**

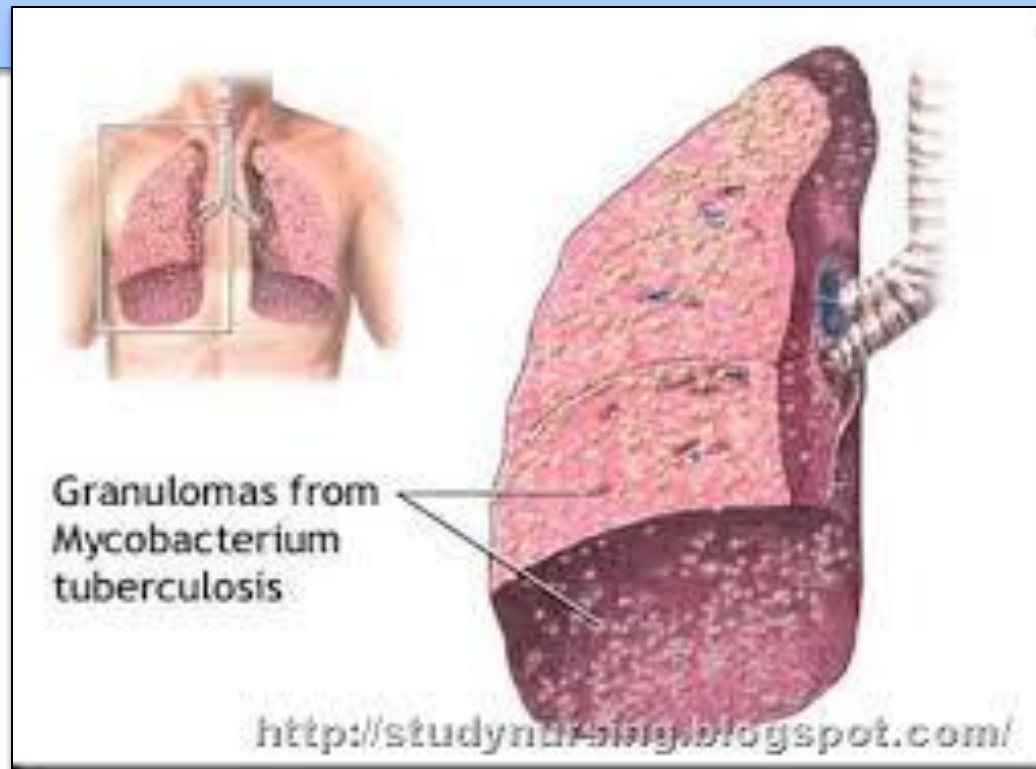
**PREPARED BY Sabira Kenzhegarina,
GROUP 2065, "GENERAL MEDICINE"**

**UNDER THE SUPERVISION OF THE FOREIGN LANGUAGES DEPARTMENT
TEACHER T.G.DASHKINA**

Karaganda 2016

Pulmonary tuberculosis

- Pulmonary tuberculosis (TB) is a contagious bacterial infection that involves the lungs. It may spread to other organs.



Causes

- Pulmonary tuberculosis (TB) is caused by the bacterium *Mycobacterium tuberculosis*. TB is contagious. This means the bacteria is easily spread from an infected person to someone else. You can get TB by breathing in air droplets from a cough or sneeze of an infected person. The resulting lung infection is called primary TB.
- Most people recover from primary TB infection without further evidence of the disease. The infection may stay inactive for years. In some people, it becomes active again (reactivates).
- Most people who develop symptoms of a TB infection first became infected in the past. In some cases, the disease becomes active within weeks after the primary infection.

Tuberculosis is either latent or active.

- **Latent TB** means that you have the TB bacteria in your body, but your body's defenses (immune system) are keeping it from turning into active TB. This means that you don't have any symptoms of TB right now and can't spread the disease to others. If you have latent TB, it can become active TB.
- **Active TB** means that the TB bacteria are growing and causing symptoms. If your lungs are infected with active TB, it is easy to spread the disease to others.

What Are the Symptoms of Pulmonary TB?

People with latent TB have no symptoms, but they should still be treated. Symptoms of pulmonary TB include:

- coughing that continues for several days
- coughing up blood
- fever, including low-grade, consistent fever
- excessive sweating
- chest pain
- unexplained weight loss
- fatigue

Main symptoms of Pulmonary tuberculosis

Central

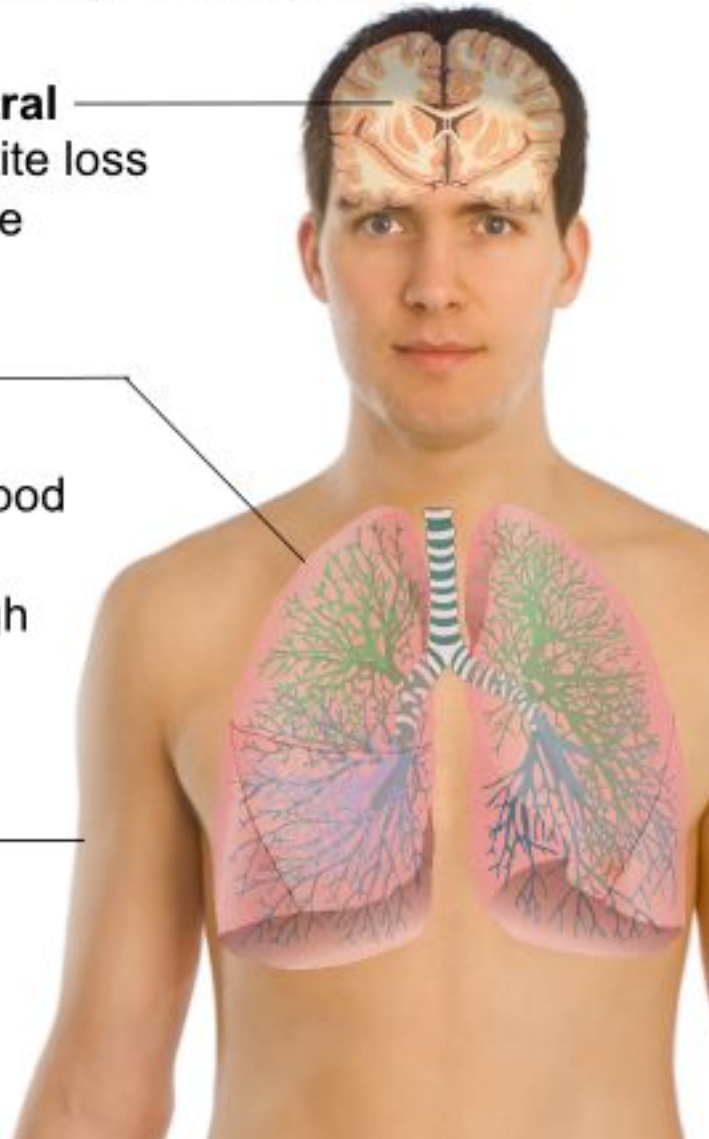
- appetite loss
- fatigue

Lungs

- chest pain
- coughing up blood
- productive,
prolonged cough

Skin

- night sweats,
- pallor



Who Is at Risk for TB Disease?

People who are most at risk for developing TB disease are:

- the elderly
- small children
- smokers
- people who already have an immune system problem, such as HIV
- people who do not regularly see a doctor, such as homeless people
- people who live in crowded conditions, such as prisons

The Passive Voice показывает, что лицо или предмет, обозначенные подлежащим, являются объектами действия, выраженного сказуемым:

The Passive Voice

to be + Participle II

PASSIVE VOICE



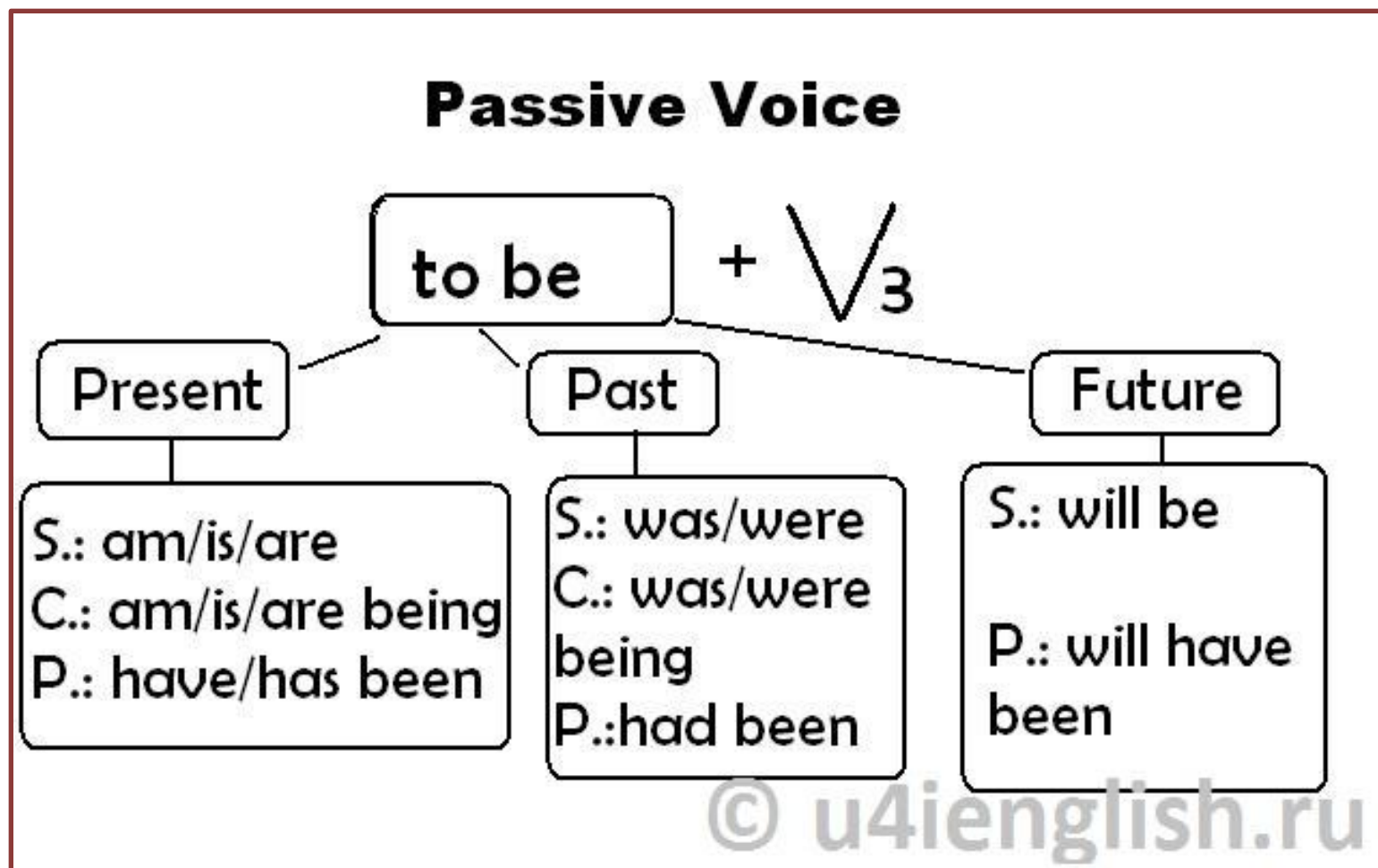
subject

action

My sister was attacked
by wild penguins.

The Passive Voice образуется при помощи вспомогательного глагола *to be* в соответствующем времени, лице и числе и причастия прошедшего времени смыслового глагола *Participle II*:

PRESENT AND PAST TENSES THE PASSIVE VOICE.



Active

Mary helps John.- Мэри помогает Джону.
Mary helped John. - Мэри помогла Джону.
Mary will help John. - Мэри поможет Джону.
Mary is helping John. - Мэри помогает Джону.
Mary was helping John. - Мэри помогала Джону.
Mary has helped John. - Мэри помогла Джону.
Mary had helped John before Mother came. -
Мэри помогла Джону до прихода мамы.
Mary will have helped John. - Мэри поможет Джону.

Passive

John is helped by Mary. - Джону помогает Мэри.
John was helped by Mary. - Джону помогла Мэри.
John will be helped by Mary. - Джону поможет Мэри.
John is being helped by Mary. - Джону (сейчас) помогает Мэри.
John was being helped by Mary. - Джону помогала Мэри.
John has been helped by Mary. - Джону помогла Мэри.
John had been helped by Mary before Mother came. - Джону помогла Мэри до прихода мамы.
John will have been helped by Mary. - Джону поможет Мэри.

Отрицательная и вопросительная формы

- в отрицательной форме частица подставляется после вспомогательного глагола:

John isn't helped by Mary. - Джону Мэри не помогает.

- При сложной форме вспомогательного глагола частица not ставится после первого вспомогательного глагола:

John hasn't been helped by Mary. - Джону Мэри не помогла.

- в вопросительной форме вспомогательный глагол (в сложной форме первый по счету) обычно ставится перед подлежащим:

Is John helped by Mary? - Джону Мэри помогает?

Has John been helped by Mary? - Джону Мэри помогла?

**THANK YOU FOR YOUR
ATTENTION!**

**The cat was chasing
the mouse.**



**The mouse was being
chased by the cat.**