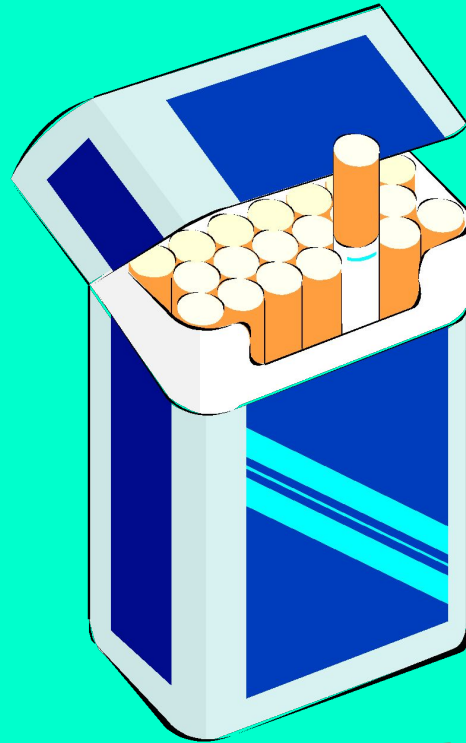


# PRESENT SIMPLE ACTIVE OR PASSIVE



My SISTER ..... **DOESN'T SPEAK** .....  
(NOT/SPEAK) ENGLISH VERY

# PRESENT SIMPLE ACTIVE OR PASSIVE



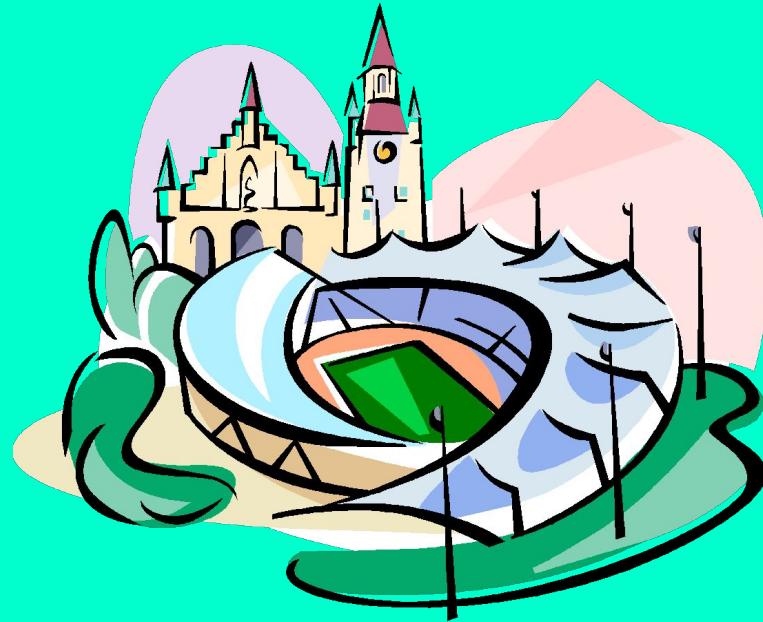
**CIGARETTES** ~~AREN'T SOLD~~  
**(NOT/SELL) HERE.**

# PRESENT SIMPLE ACTIVE OR PASSIVE



**IS THE BREAD BAKED** (THE  
**BREAD/BAKE) EVERY DAY?**

# PRESENT SIMPLE ACTIVE OR PASSIVE



**THE OLYMPIC GAMES**

**AREN'T HELD** (NOT/HOLD)

**EVERY YEAR.**

# PRESENT SIMPLE ACTIVE OR PASSIVE



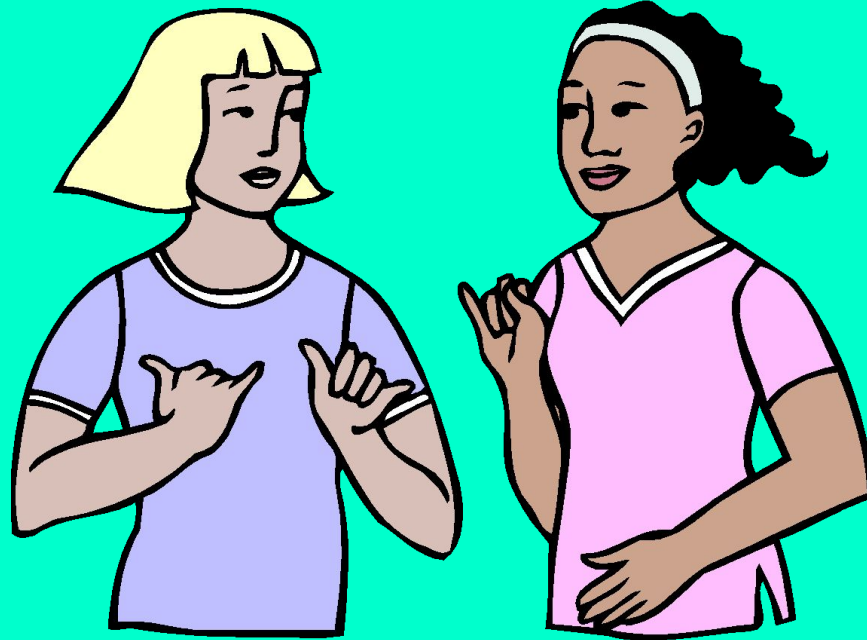
WHO **WROTE** (WRITE)  
THIS ESSAY?

# PRESENT SIMPLE ACTIVE OR PASSIVE



HOW OFTEN **DO YOU OPEN**  
-----  
(YOU/OPEN) YOUR EMAILS?

# PRESENT SIMPLE ACTIVE OR PASSIVE



**IS ENGLISH SPOKEN**  
**(ENGLISH/SPEAK) IN YOUR  
FAMILY?**

# **PRESENT SIMPLE ACTIVE OR PASSIVE**



**OUR PRODUCTS ARE EXPORTED**

----- **(EXPORT) TO**

**SEVERAL COUNTRIES.**



# PRESENT SIMPLE ACTIVE OR PASSIVE



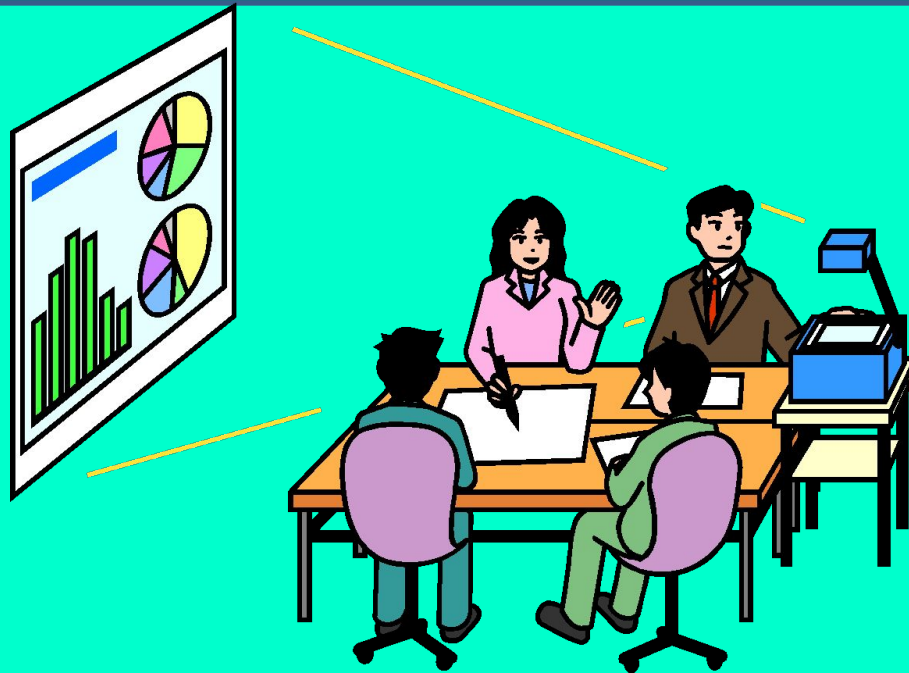
My COUSIN IS AN AUTHOR, SHE  
**WRITES** (WRITE) BOOKS.  
-----

# PRESENT SIMPLE ACTIVE OR PASSIVE



----- **IS WHISKY MADE** -----  
**(WHISKY/MAKE) IN SCOTLAND?**

# PRESENT SIMPLE ACTIVE OR PASSIVE



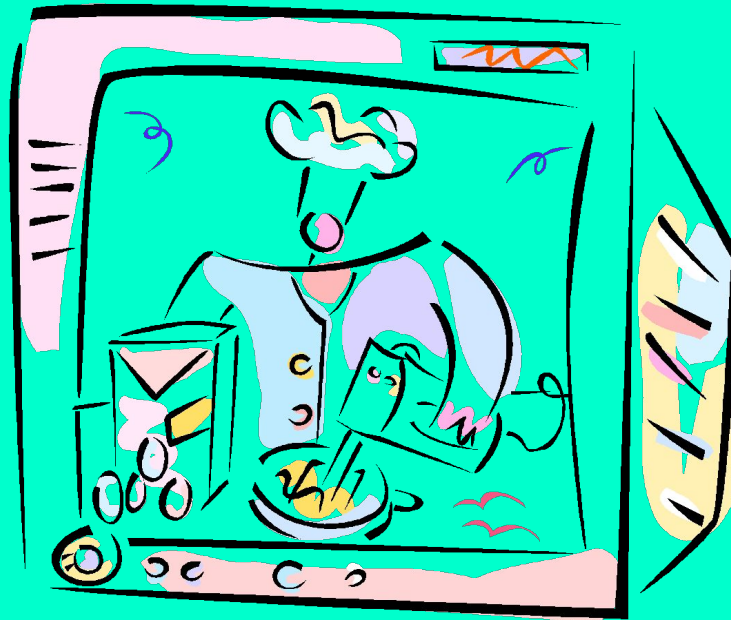
**DOES YOUR BOSS**  
-----  
**(YOUR BOSS HOLD) A**  
**MEETING EVERY WEEK?**

# PRESENT SIMPLE ACTIVE OR PASSIVE



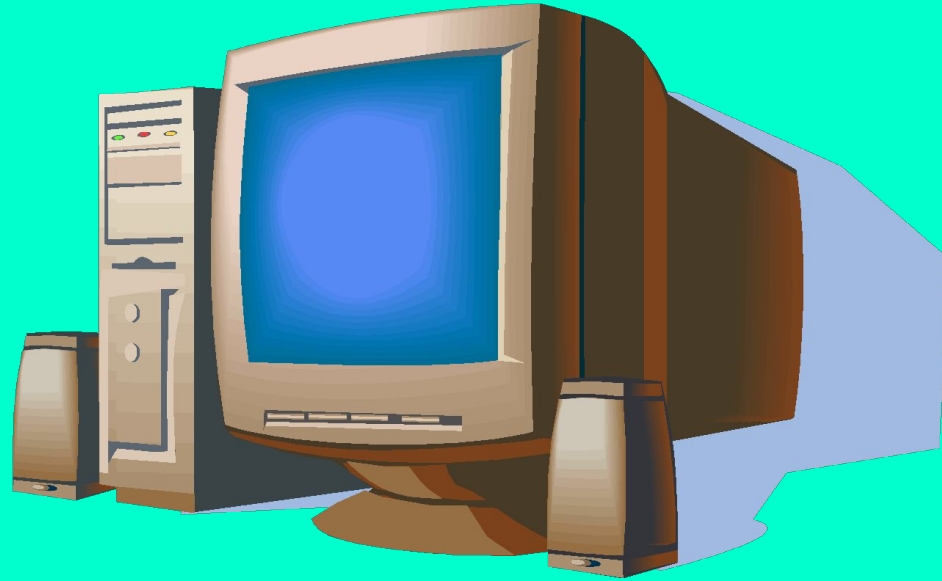
**BOOKS** \_\_\_\_\_ **ARE SOLD** \_\_\_\_\_ **(SELL)**  
**IN THAT SHOP OVER THERE.**

# PRESENT SIMPLE ACTIVE OR PASSIVE



**THIS PROGRAMME ISN'T SHOWN**  
**..... (NOT/SHOW) ON**  
**TV WEEKS OFFEN**

**PRESENT SIMPLE  
ACTIVE OR PASSIVE**



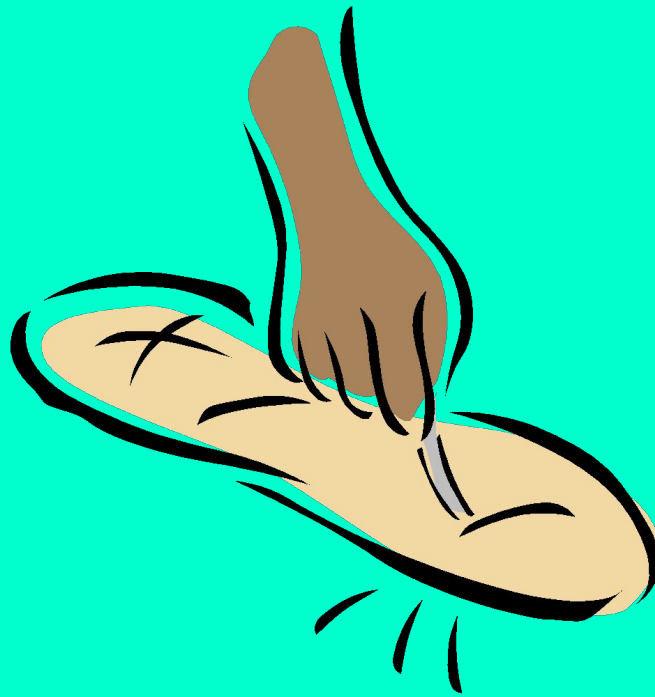
**THESE COMPUTERS  
AREN'T PRODUCED  
-----  
(NOT/PRODUCE) ANY MORE.**

# PRESENT SIMPLE ACTIVE OR PASSIVE



~~THEY DON'T SELL~~.....  
(NOT/SELL) COLD DRINKS AT THE  
CORNER SHOP

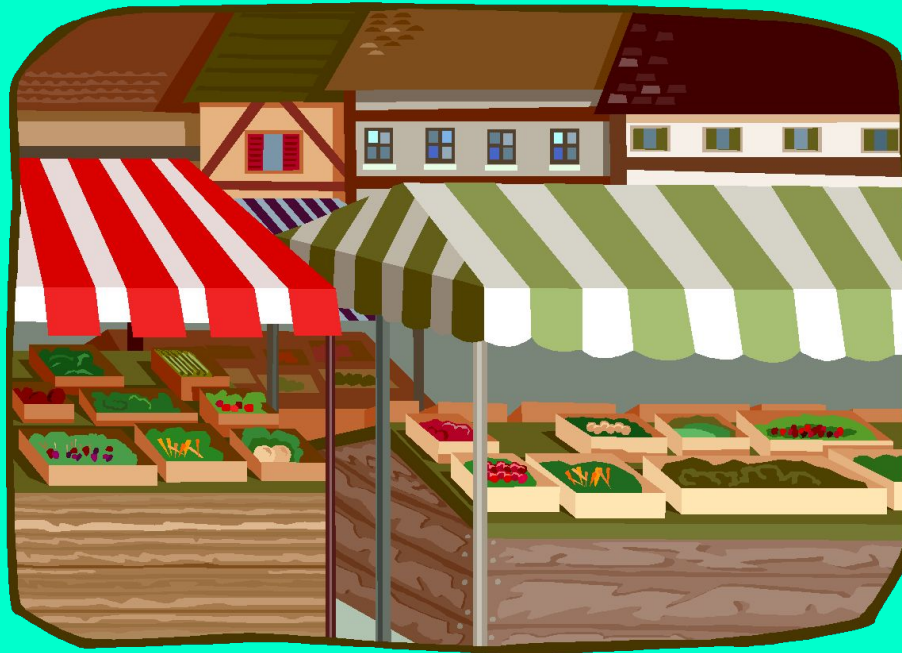
# PRESENT SIMPLE ACTIVE OR PASSIVE



My BROTHER IS A BAKER, HE  
**BAKES** (BAKE) BREAD.

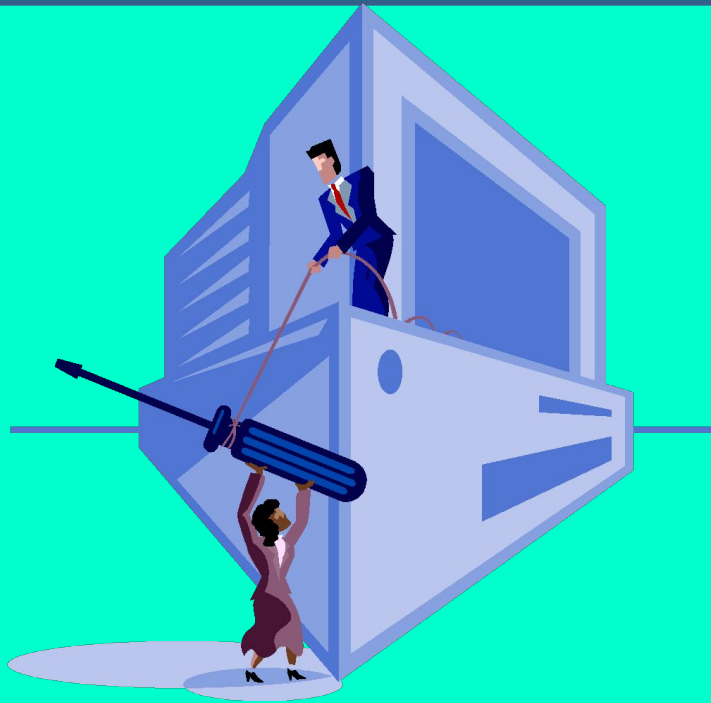


# PRESENT SIMPLE ACTIVE OR PASSIVE



THEY **SELL** (SELL) FRUIT  
AND VEGETABLES AT THE LOCAL

# PRESENT SIMPLE ACTIVE OR PASSIVE



I ..... **REPAIR** ..... (REPAIR) ALL  
THE COMPUTERS IN MY FIRM.

# **PRESENT SIMPLE ACTIVE OR PASSIVE**



**IS THE POST DELIVERED**

**(THE POST/DELIVER) EVERY DAY?**

# PRESENT SIMPLE ACTIVE OR PASSIVE



WHO **PAYS** \_\_\_\_\_ (PAY) THE  
BILLS?