



[Type Destination Name/
Presentation Title]

Fáilte go hÉirinn

Ireland is an island of character...



Ireland is an island of character....



...and characters



You'll have the craic...



And Feel The Real Irish Experience





Ten Reasons To come to Ireland

1. Easy Access



4 Key Airports:

- Belfast
- Dublin
- Shannon
- Cork

4 Key Ports: (to be added)

- Dublin
- Rosslare
- Cork
- Belfast

2. Value for Money



**Ireland offers
exceptional
value in
accommodation
and activities**

3. High Standard of Accommodation



from **5** star Luxury...



....to traditional self catering accommodation

4. Céad Mile Fáilte...



**The famous
Irish welcome**



5. Excellent Customer Service



6. Outstanding Scenery



7. Rich Culture and History



8. Unspoilt Environment



9. Unique Literary History



A green decorative bar at the top of the slide, with a shamrock graphic on the right side.

10. Diverse Range of Activities and Sites of Interest

Falconry





White Water Kayaking

Horse Racing





Mountain Biking

St. Patrick's Day



Kite Surfing



Tobar na Scéalta



Dublin Dance Festival



Horse Riding



Traditional Irish Music



Rock Climbing



Literary Tours

LIBRARY



Mountain Climbing



Dublin Theatre Festival





Festivals & Music



Hot Air Ballooning



Water Activities - Snorkelling

Water Activities - Diving





MARSHALLS
CAFE

Sutton

Amnibian

M' Donnell



Adventure





Angling

Golf



Festivals & Events





Walking



There's Something For Everyone

Family Fun



Family Fun



Romantic Breaks



Relaxing with friends



Relaxing with friends



Culture Seekers



Culture Seekers





Dublin



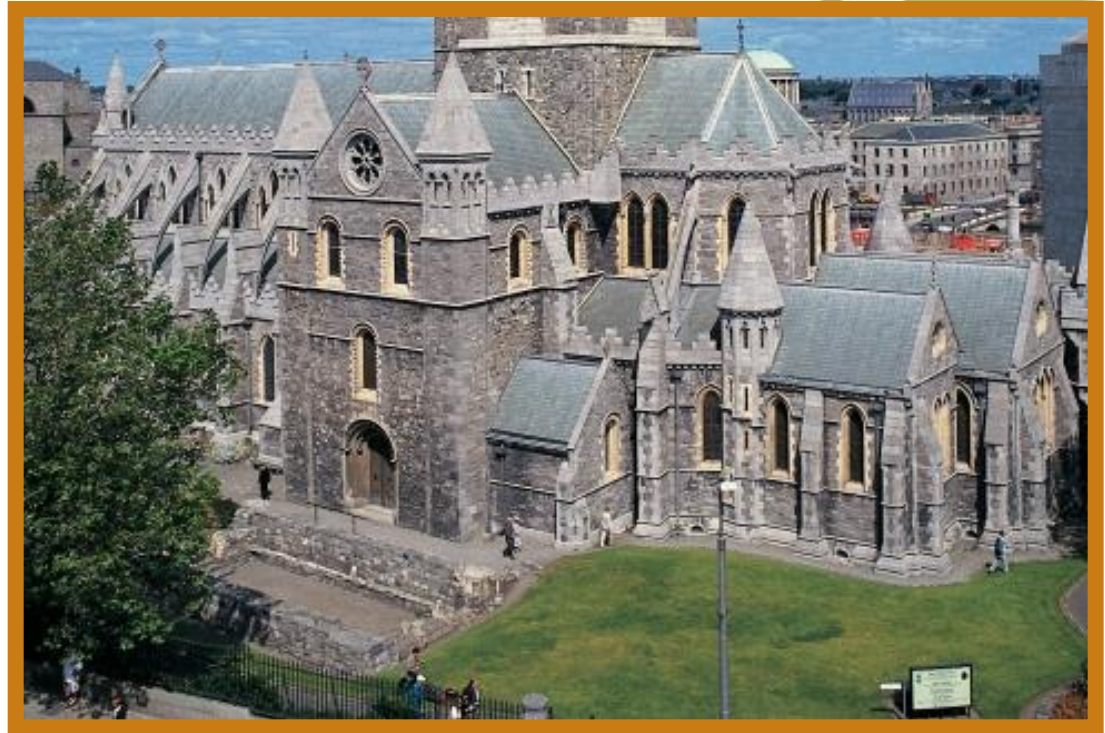
Experience Dublin by Day



The Long Room Trinity College



Christ Church Cathedral



National Museum Dublin



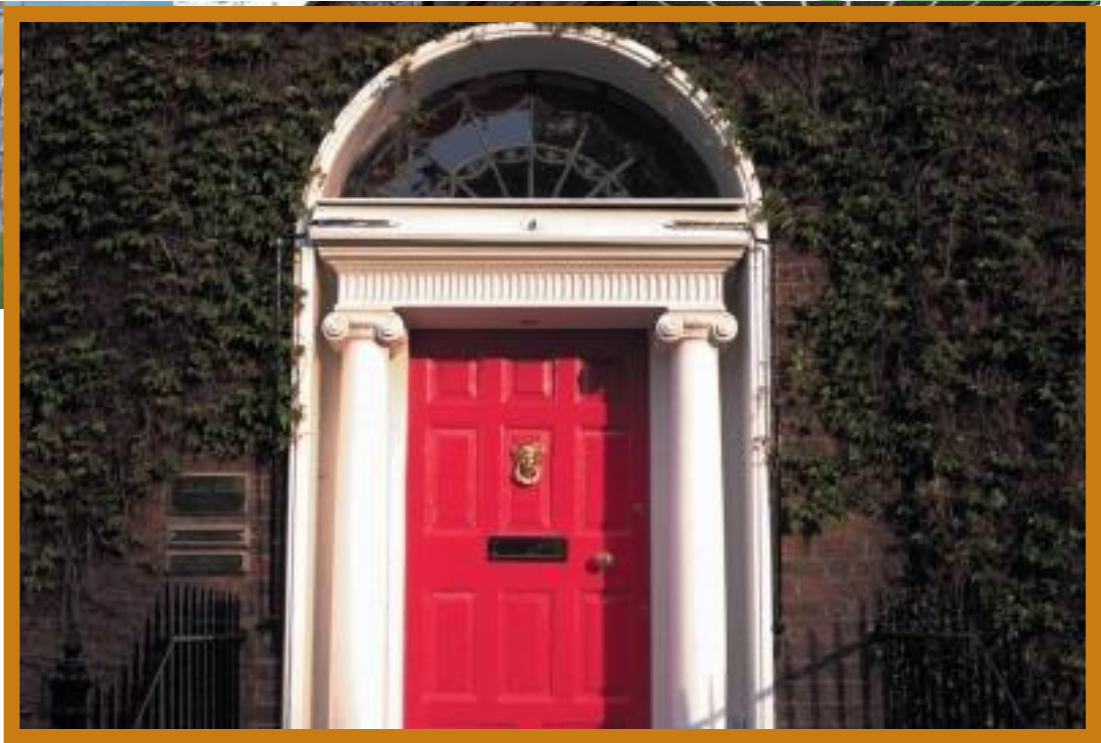
Croke Park Dublin



Farmleigh House Dublin



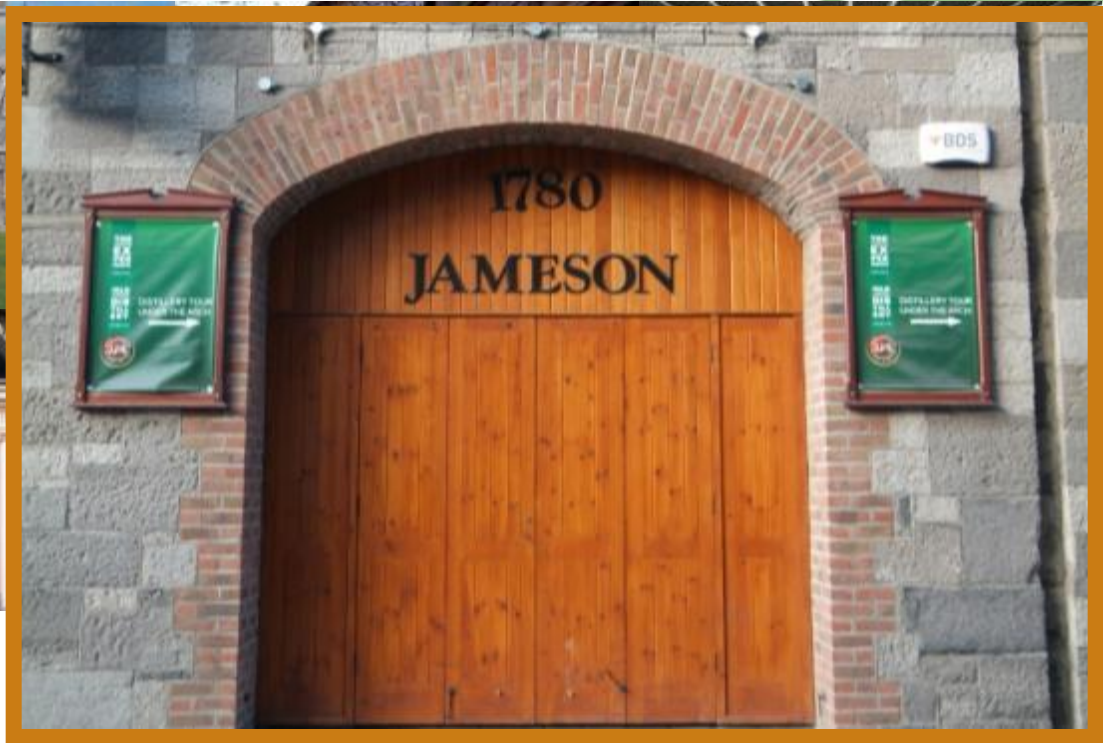
Georgian Doorways Dublin



St. James's Gate Brewery, Dublin



Jameson Distillery Dublin



LUAS & Guinness Storehouse Dublin



Malahide Castle Co. Dublin



Molly Malone Statue Grafton Street

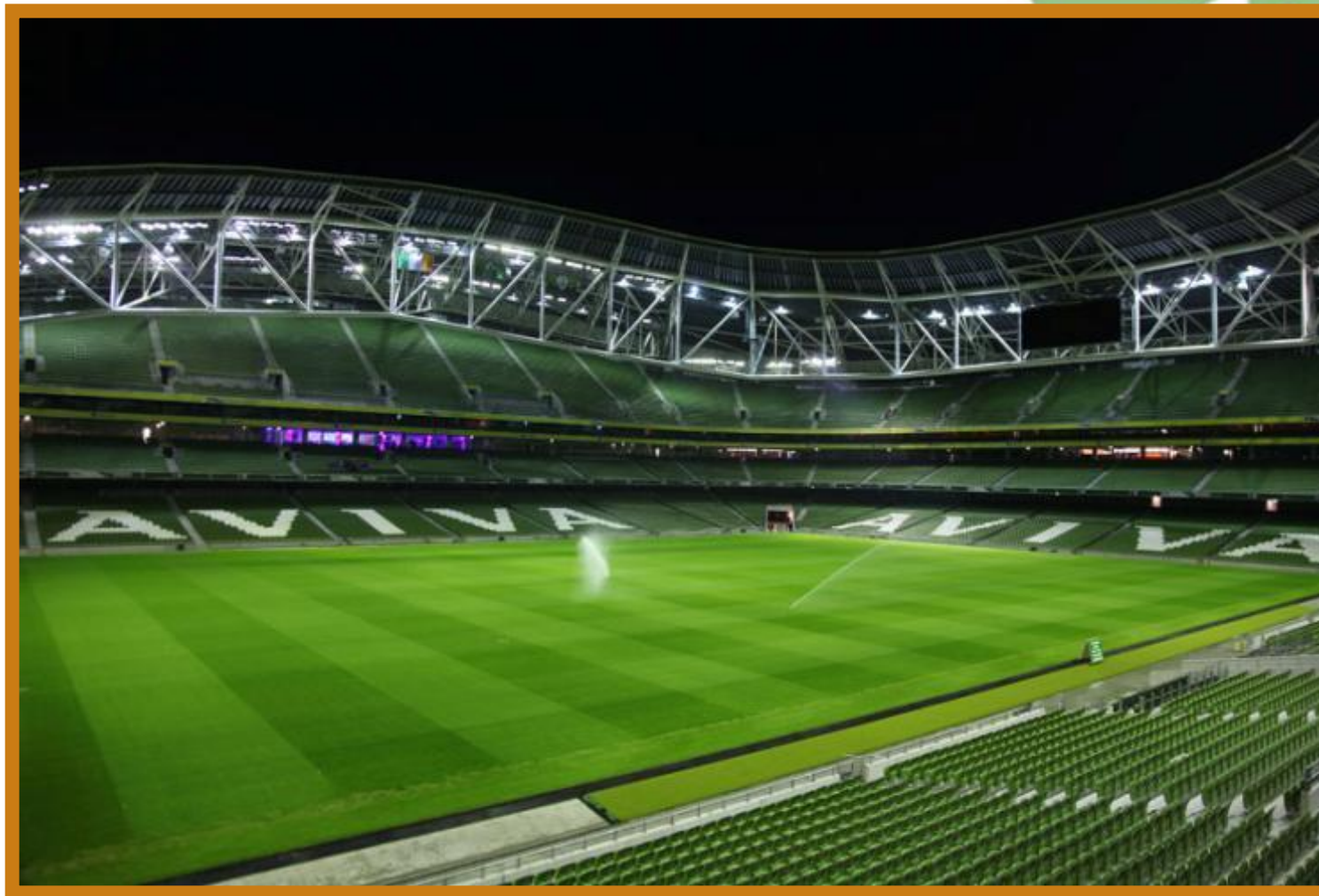




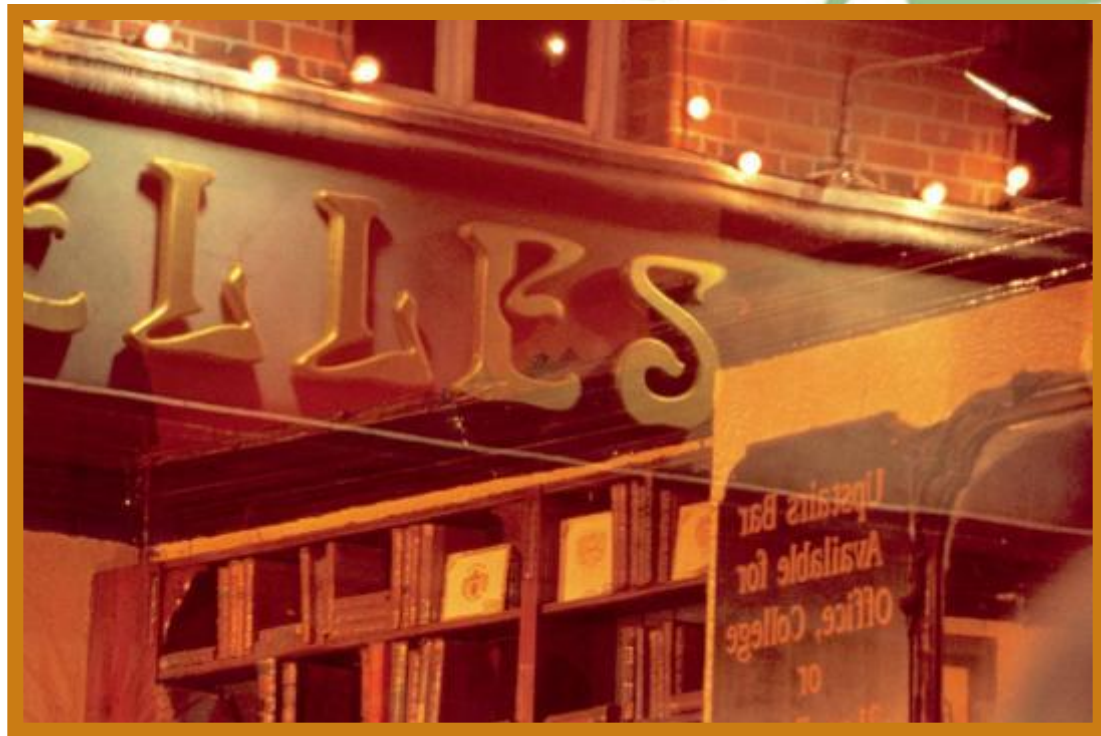
Experience Dublin by Night



Aviva Stadium Lansdowne Road



Bruxelles Bar Harry St.



Dublin Architecture



The Millennium Bridge River Liffey



Sosume Bar



St. Patrick's Festival



Temple Bar

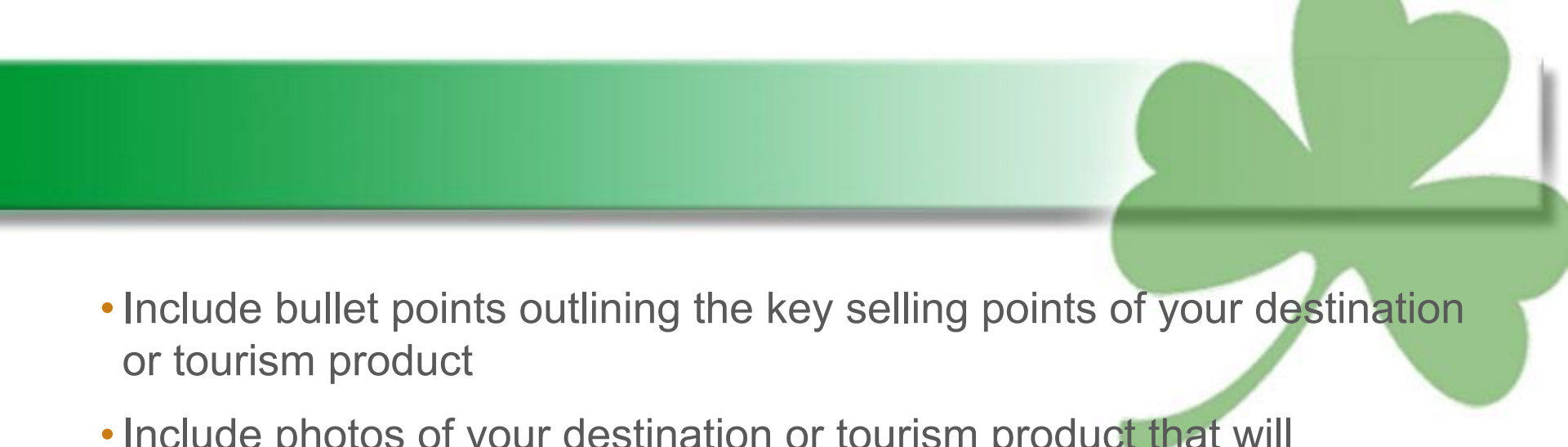


U2's Clarence Hotel





Dublin

- 
- A solid green horizontal bar spans the top of the slide. On the right side, there is a large, stylized green shamrock graphic with a long stem and a small leaf at the bottom.
- Include bullet points outlining the key selling points of your destination or tourism product
 - Include photos of your destination or tourism product that will demonstrate visually how attractive your product is