

Powder /Water / Concentration Adjustment  
and Other questions

# Adjustment Overview

- We combine Powder/water/concentration adjustment into one step
- We use the recommended powder & water level on milk package to get the right concentration

**Long Press” +” and Go  
into Setting mode**

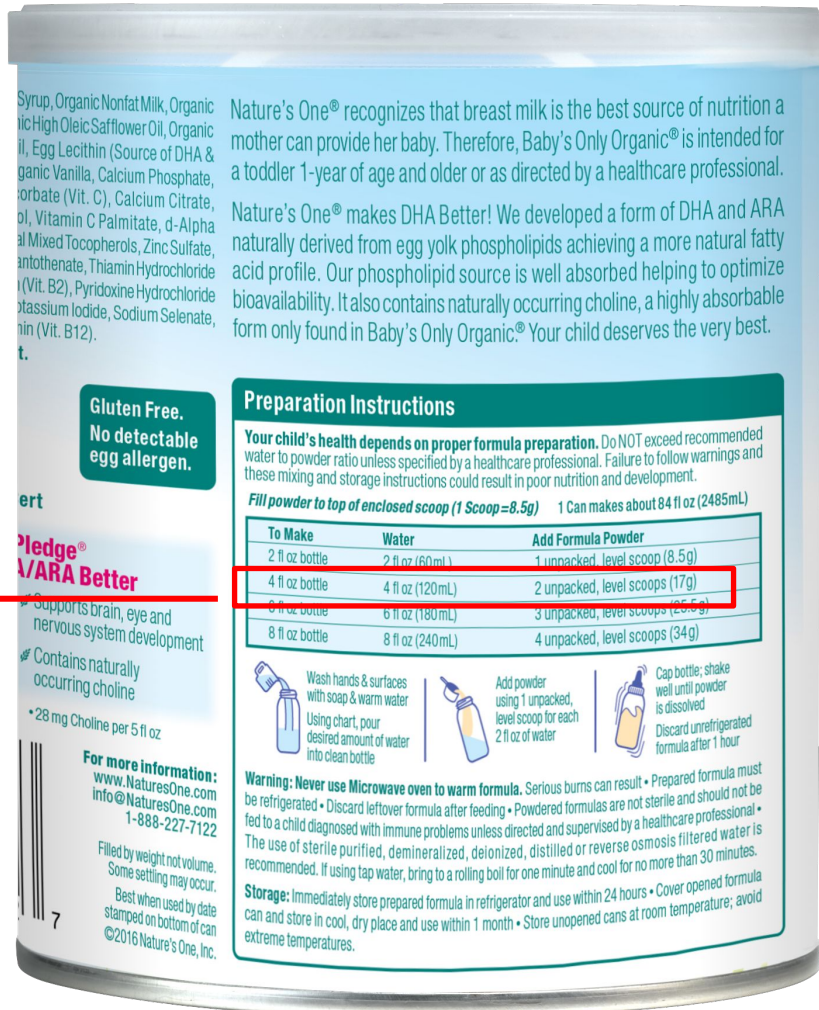
LCD shows ‘C 01’ , means the  
01 function,  
Press ‘+’ again to go into  
concentration setting page.



User can find the milk powder package and choose a recommended powder & water amount

In this case, the recommended powder is 17g, and water is 120ml  
The concentration is 17g/120ml

What we will do next, is to test & set the powder to 17g, and water to 120ml, so that the concentration will be right



**Step 1: Enter package powder amount**

Once gone into 'C01', the 'g' led will blink, means you have entered powder adjustment page.

Here, you need to enter the amount of powder shown on the back of powder package, in this case, you need to enter '17'

You can press the '+' and '-' on the right side to adjust the number

Press 'Start', and it will pour milk powder only.

Press '+' and go into next step



## Step 2: **Adjust** real powder amount

User needs to weight the real powder in Step 1, and enter it back into the device. For example, the real powder is 15g, and you need to enter 15 onto device.

You can press '+' and '-' on the right to adjust the number

Then, the milk powder is adjusted **automatically**

You can press 'start' again to test if the real powder is correct, if it's not, then you can adjust it until it's right

Now, the powder is adjusted and tested. Press '+' and go into next step



**Step 3: Enter package water amount**

At this stage, the 'ml' led will blink, means you have entered water setting page.

Here, you need to enter the amount of water shown on the back of powder package, in this case, you need to enter '120'

Press 'Start' , and it will pour water only.

Press '+' and go into next step



#### Step 4: **Adjust** real water amount

User needs to weight the real water amount in Step 3, and enter it back into the device. For example, the real powder is 118ml, and you need to enter 118 onto device.

You can press '+' and '-' to adjust the number

Then, the water is adjusted automatically

You can press 'start' again to test if the water amount is correct, if it's not, then you can adjust it until it's right

Now, the water is adjusted and tested.





## Step 5: Exit

Since the powder is adjusted and the setting amount is the recommended value, and the water is also adjusted, and the setting amount is also recommended value.

Then machine will have the right concentration adjusted at the same time

User can press '+' again to exit setting mode.

This way is the simplest way to test and set milk powder, water and concentration at the same time.



# Test Powder & Water Overview

- We create a separate function (C02 & C03) to test powder and water amount

**Long Press” +” and Go  
into Setting mode**

LCD shows ‘C 01’ , means the  
01 function,  
Press ‘+’ on the right side  
to switch to C02 or C03

Press ‘+’ on the left set to  
go into each mode



## C02 Powder test mode

In C02 mode, press '+'  
'-' on the right side to  
adjust the amount of powder  
you want to get. Press  
'Start' to pour milk powder  
only.

If the result is not correct,  
then user needs to go to C01  
mode to adjust



## C03 Water test mode

In C03 mode, press '+'  
'-' on the right side to  
adjust the amount of water you  
want to get. Press 'Start' to  
pour water only.

If the result is not correct,  
then user needs to go to C01  
mode to adjust



# Other questions

1. It is necessary to make the temperature of the water in the tank is 37° minimum, 60 ° maximum

Yes, we can do that.

2. A circuit Board (display) you need to add a point after the second sign (22.5 gr) it should light up when a configurable amount of powder

We can't put the 'dot' on to the device, because there is no electrical design for that in the current device, we will need to redesign the circuit board and even change the mold if needed, this needs quite a bit of money and long time to develop.

However, I think we can make the accuracy of adjusting milk powder in g not in 0.1g, because users don't need to set milk powder in that accuracy level, they don't even have a weight scale that can weight up to 0.1g accuracy. For example, instead of adjusting milk powder from 4.1g to 4.9g, we can simply let user to adjust from 4g to 5g. That didn't make much difference.

# Other questions

3. It is necessary to strengthen the connection of the water tank with electronic Board  
This is the first time among tens of thousands of devices, we believe it's a manual mistake when updating your devices ( we don't have this procedure when selling products) if we have the same issue when you selling this product, we can replace with new machine and cover the shipping cost.

4. It is necessary to replace the Bluetooth icon on the icon grams.  
Yes, we can do that.