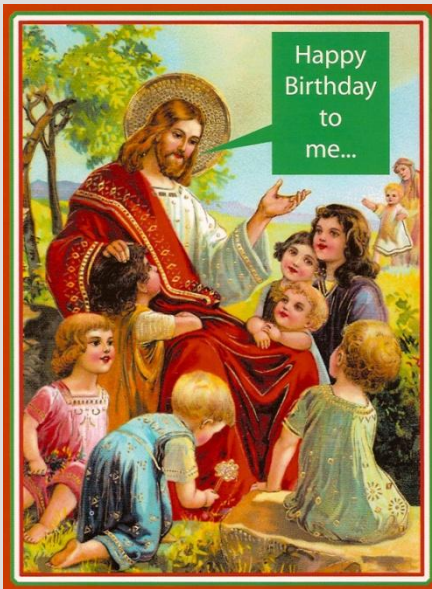


Christmas and New Year in England



Questions:

□ Can you tell me who was Jesus' mother?



(Mary)

□ Who was his father?

(Joseph)

□ What city was he born in?

(Bethlehem)

□ Where was he born?

(In the stable)

□ What do people usually do on Christmas?

(They buy presents, decorate the trees, make holiday dinner, sing Christmas songs, go to church, play games)

Jingle Bells



Dashing through the
snow
in a one-horse open
sleigh,

Over the fields we go,
laughing all the way.

Bells on bob-tails ring,
making spirits bright,

What fun it is to ride and
sing a sleighing song
tonight.



Jingle bells, jingle bells, jingle all
the way!

O what fun it is to ride in a
one-horse open sleigh.

Jingle bells, jingle bells, jingle all
the way!

O what fun it is to ride in a
one-horse open sleigh.

Dates

Advent – four Sundays before Christmas.

One of the popular traditions is the Advent Candle. An Advent candle often has 25 marks on it, a bit of the candle is burned down by one mark each day. In some homes, 24 candles are kept, one for each night from December 1 through Christmas eve.



24 December – Christmas Eve

Night time on Christmas Eve though is a very exciting time for young children. It is the time when Santa or Father Christmas comes. They hang up their stockings and go to sleep.

25 December – Christmas Day

26 December – Boxing Day

It is traditionally a time to give gifts to tradesmen, servants, and friends.

31 December - New Year's Eve



Christmas has been celebrated in England for thousands of years. According to the legend, King Arthur started it in the city of York in 571.



Nowadays people start preparing for the holiday in the beginning of December. People buy lots of presents and send cards to their friends and relatives. It is mostly a family holiday. Englishmen decorate their houses with green leaves, red paper decorations, Christmas Trees and colourful electric lights and glass balls.

Red and green are the traditional colours of Christmas. Green represents the continuance of life through the winter. Red symbolizes the blood of Jesus at his Crucifixion.



Symbols



Christmas Tree is decorated with coloured glass balls and toys, sweets, bells.

There is usually a bright star or the figure of the Christmas angel at the top of the tree.

The first Christmas Tree came to England in 1841 from Germany.

Nowadays, in London, near the statue of Lord Nelson in Trafalgar Square, a giant Christmas Tree is set up and decorated each year. The Tree is a present from the people in Oslo, Norway.

Symbols



One of British tradition is to hang **stockings** on the mantel to be filled with presents.



Symbols

Christmas presents

*26 December
Boxing day*



Poinsettia

/пуансеттия/

Poinsettias are popular Christmas decorations in homes, churches, offices.



Mistletoe

/омела/

It is tied with ribbons and hung up in doorways. By custom anyone standing under the mistletoe gets to be kissed.



Holly

/остролист/

Decorating the house with "boughs of holly" is an old British custom

Christmas Cards



The first Christmas cards were illustrated by John Callcott Horsley in London on the 1st of May 1843.



Christmas cards became popular in Victorian England, they were mostly home made and given to loved ones.

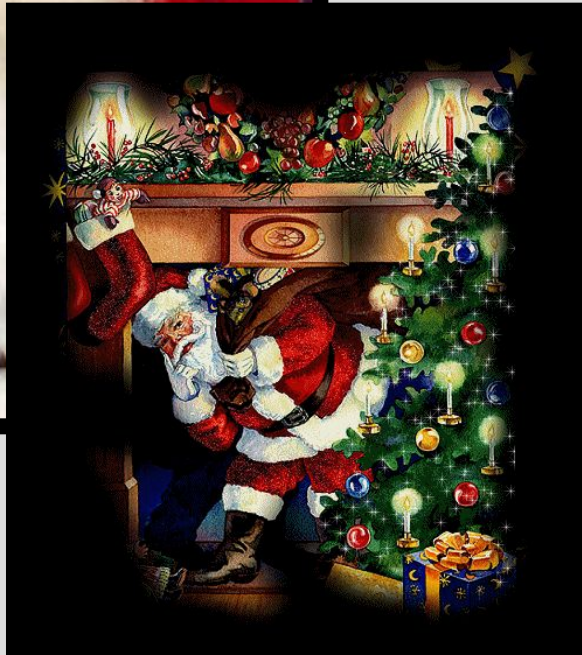
The world's first commercially produced Christmas card, designed by John Callcott Horsley



Santa Claus

Santa Claus, also known as **Saint Nicholas**, **Father Christmas** and simply "**Santa**", is a figure with legendary, mythical, historical and folkloric origins.

Writing letters to Santa Claus has been a Christmas tradition for children for many years.



Santa Claus's deers

Santa Claus' deer is a team of flying deer traditionally held to pull the sleigh of Santa Claus and help him deliver Christmas gifts



Dancer ("Танцор"),
Prancer ("Гарцующий"),
Vixen ("Злобный"),
Comet ("Комета"),
Cupid ("Купидон"),
Donner ("Болван"),
Blitzen ("Молниеносный")
Rudolf ("Рудольф").

Christmas Dishes

**Roast turkey or
goose and potatoes**
*Запеченая идеяка или
гусь с картошкой*

**Traditional
Christmas ham**
*Традиционная
рождественская
ветчина*

**Brussels
sprouts**
*Брюссельская
капуста*



Christmas Desserts

Yule Log

*Рождественское
полено*



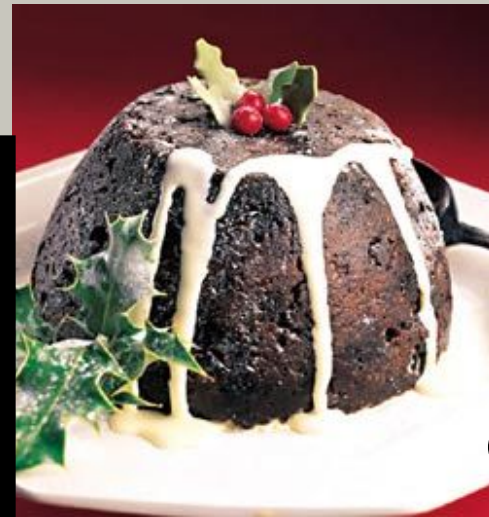
Christmas cake

*рождественский
фруктовый
пирог*



Mince pies

*сладкий
пирог с
начинкой*



Christmas pudding

*традиционный
рождественский
пудинг*

Now match the words, please:

- ✓ Turkey
- ✓ Pudding
- ✓ Sleigh
- ✓ Stocking
- ✓ Mistletoe
- ✓ Christmas
- ✓ Brussels sprouts
- ✓ Deer
- ✓ Holly

- Чулок
- Сани
- Рождество
- Остролист
- Олень
- Индейка
- Брюссельская капуста
- Пудинг
- Омела



We wish you a Merry Christmas

We wish you a Merry Christmas;
We wish you a Merry Christmas;
We wish you a Merry Christmas
And a Happy New Year.

Good tidings we bring to you and
your kin;
Good tidings for Christmas and a
Happy New Year.
Oh, bring us a figgy pudding;



Oh, bring us a figgy pudding;
Oh, bring us a figgy pudding and a
cup of good cheer.

We won't go until we get some;
We won't go until we get some;
We won't go until we get some,
So bring some out here.

True or false?

1. 25 December – Christmas Day +
2. 26 December – Boxing Day +
3. 24 November – Christmas Eve –
(december)
4. 31 December - New Year's Eve +
5. The first Christmas cards were illustrated by
John Callcott Horsley in London on the 1st of
May 1842 - (1843)

Thank you for your attention!

