



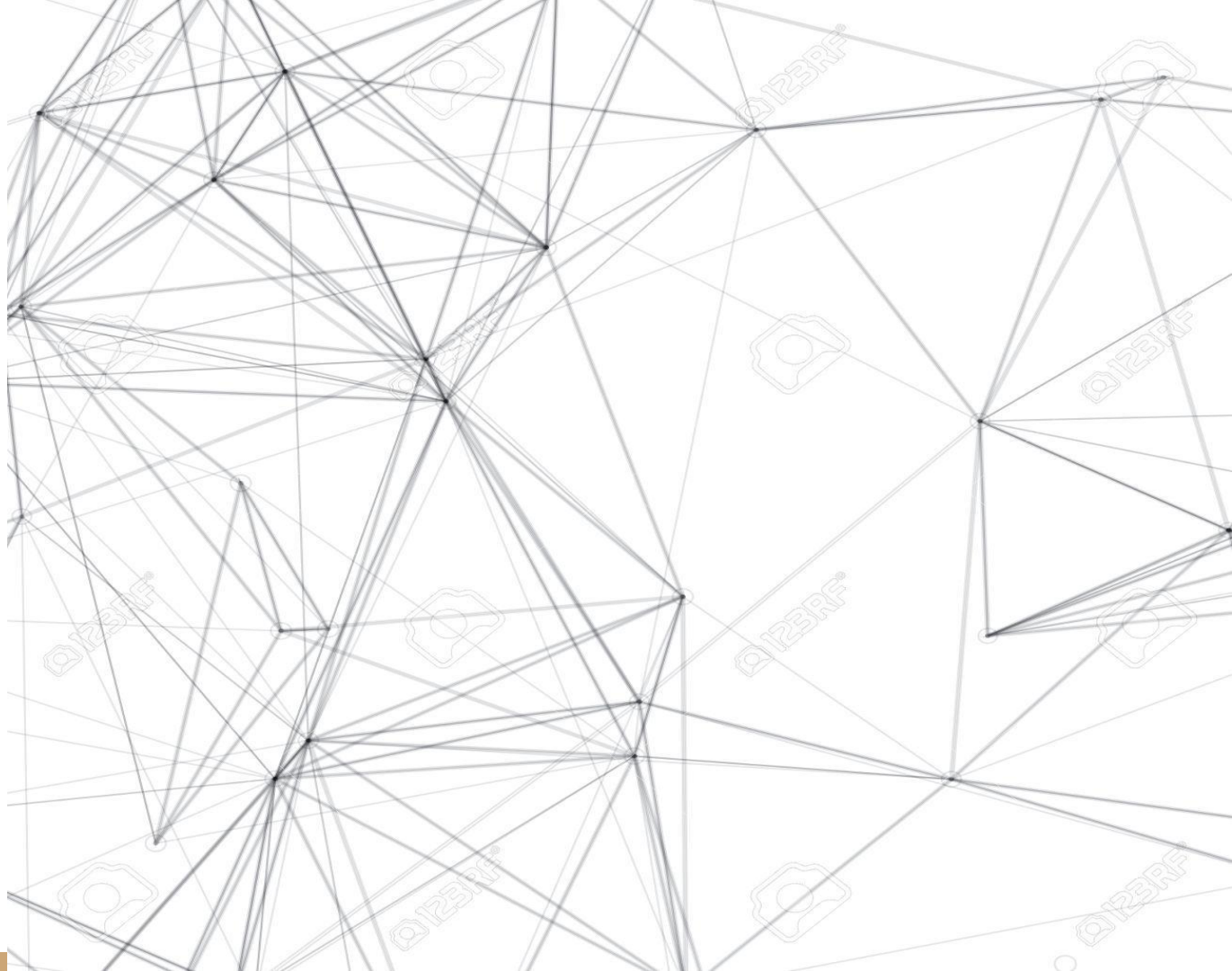
ART PIECE

WHAT IS IT?

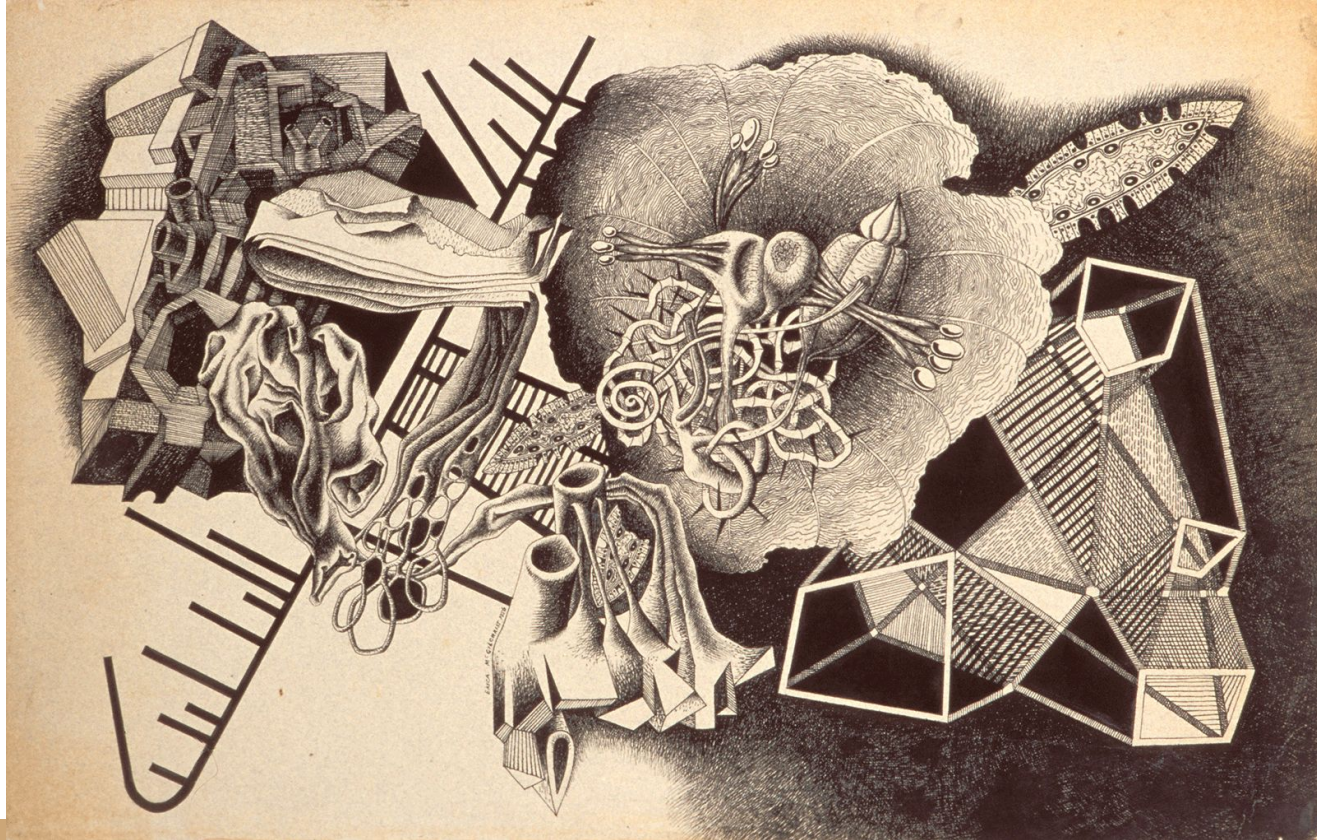


Elements of Design

Line

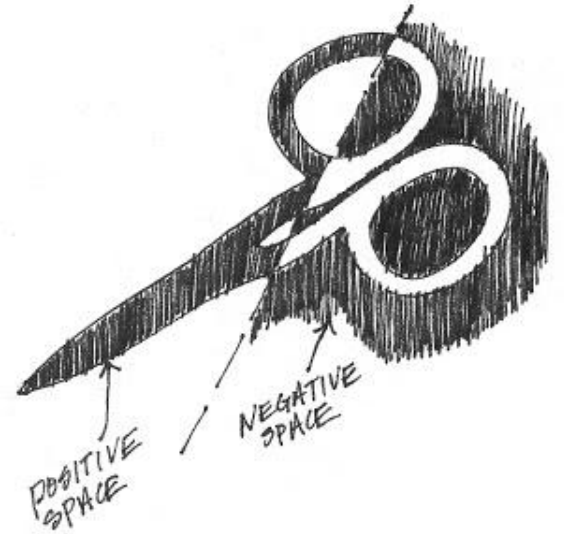


Form (object in space) positive



Space (between objects) negative

PRACTICE: DRAW AN
OBJECT IN POSITIVE AND
NEGATIVE (ONE ORGANIC
AND ONE INORGANIC)



Texture (quality of the surface)

PRACTICE:

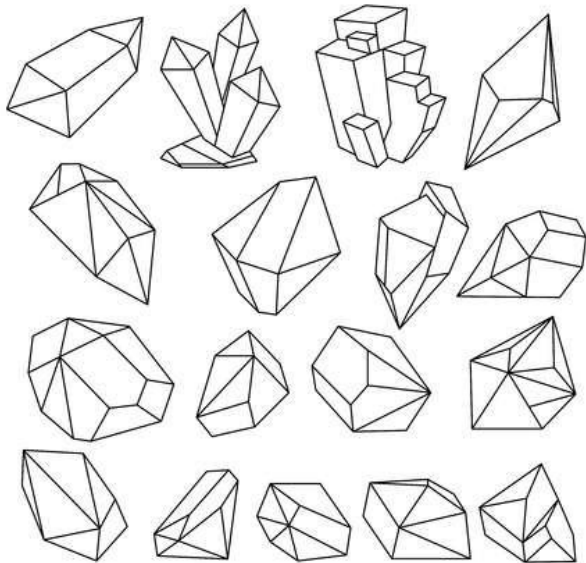
1) DRAW LETTERS OF YOUR
NAME

2) CREATE A DIFFERENT
TEXTURE FOR EACH LETTER (IT
CAN BE CONNECTED TO YOUR)



Shape(what you have, when you close a line)

PRACTICE: DRAW SOMETHING
USING ONE LINE



Color (value/ hue that object has)



Value (little changes in color)



Principles of Design

Emphasis(area that stands out)
-where you eyes look first



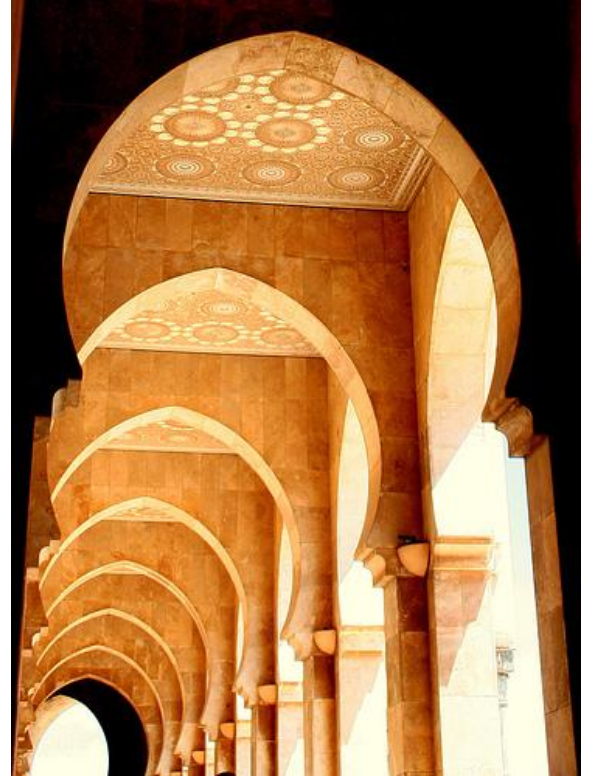
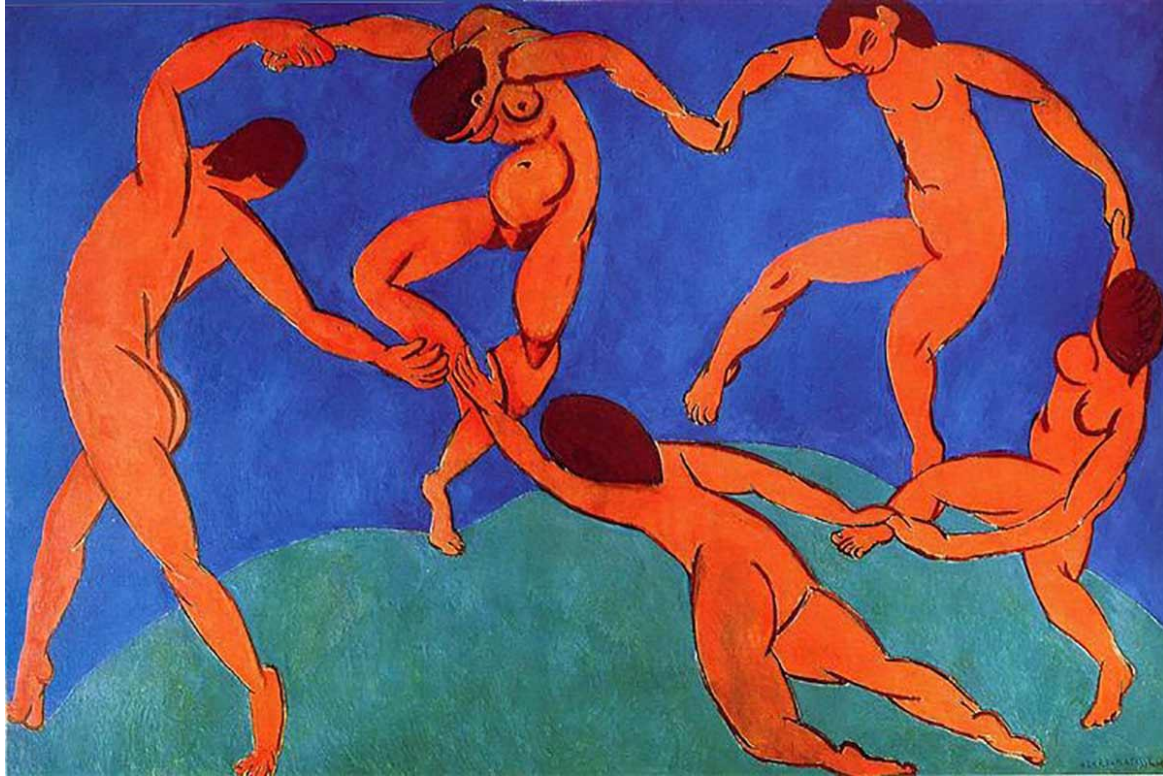
Movement (motion created in a work of art)
-illusion that something is happening



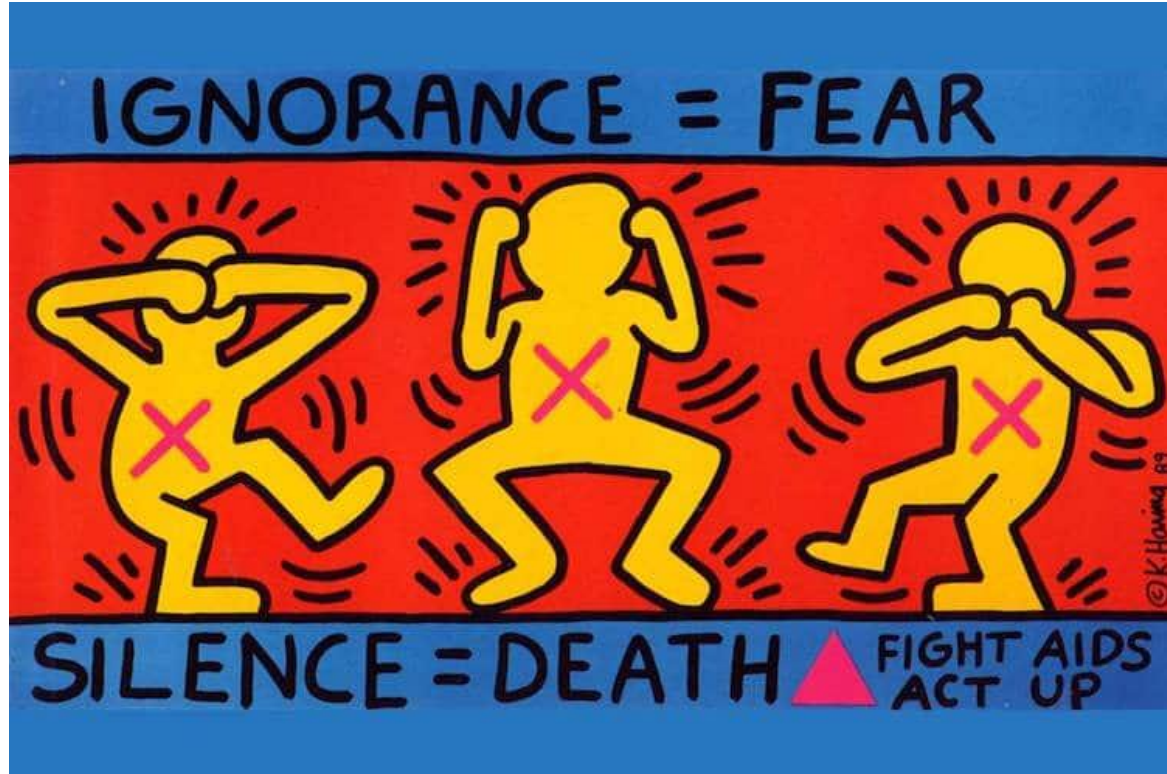
Unity (the feeling of wholeness)



Rhythm (repetition of EOD to create movement)



Contrast (big difference)



Variety (different lines, shapes and colors)
- not against Unity

