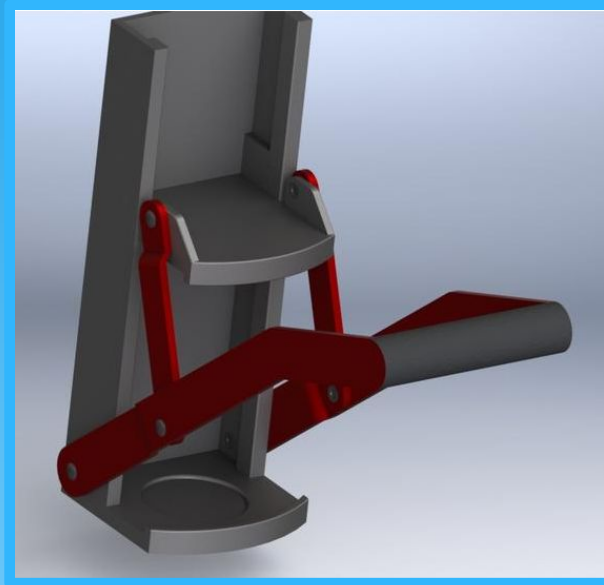


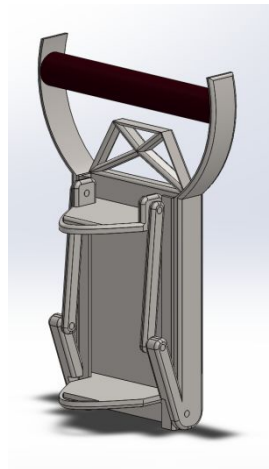
THE CAN CRUSHER PROJECT



Comparison Designs

My can crusher

- * Made of stainless steel
- * Durable design
- * Long lasting
- * Cans flatten with ease
- * Doesn't rust
- * \$18



Commercial can crusher

- * Cheaply made
- * Poor design
- * Fragile over the years
- * \$12

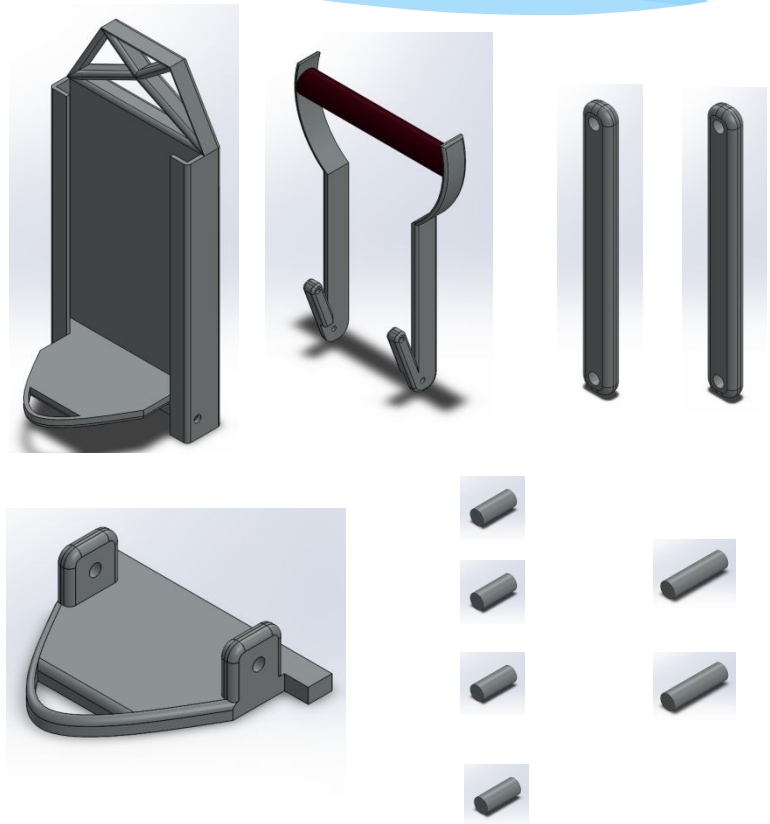


Materials

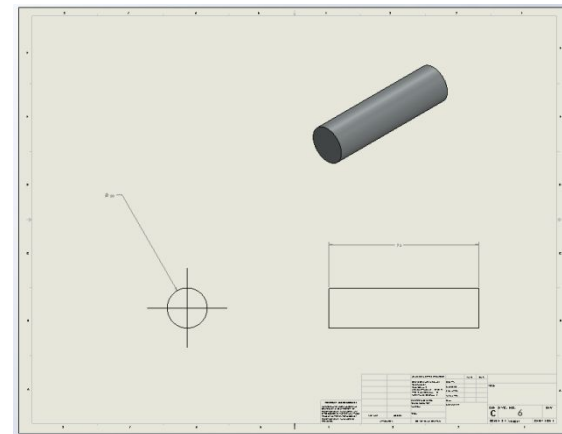
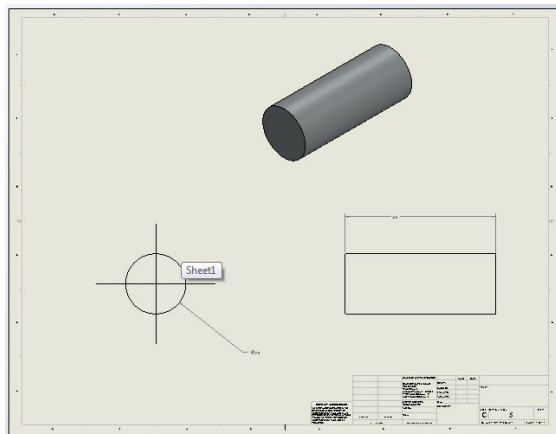
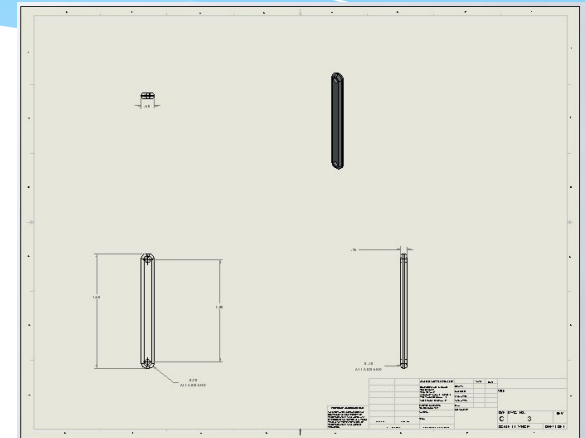
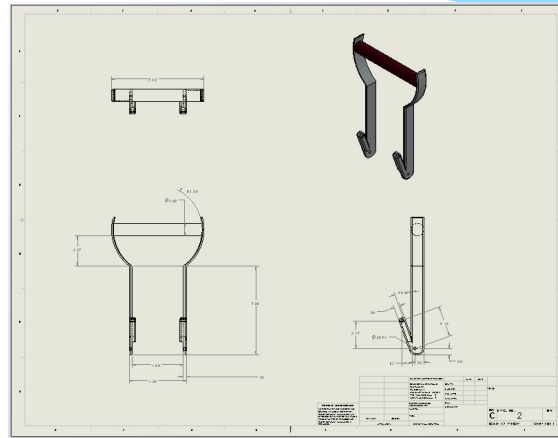
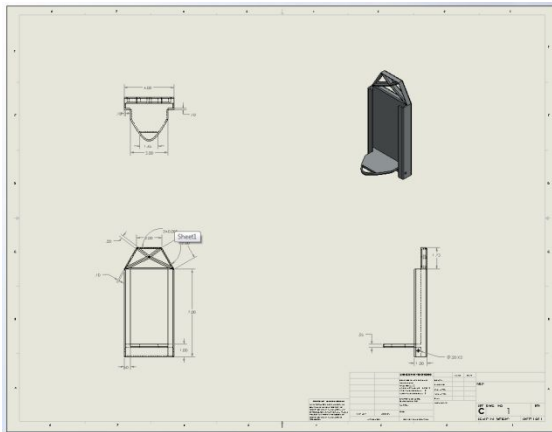
- * Made entirely out of Chrome Stainless Steel
- * Rubber cushion grip handle
- * Tensile strength
- * Sturdy assembly design

Parts

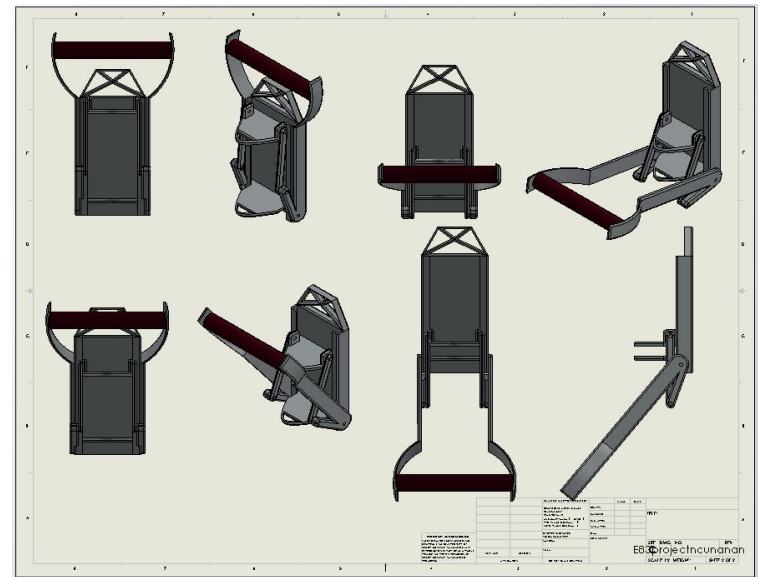
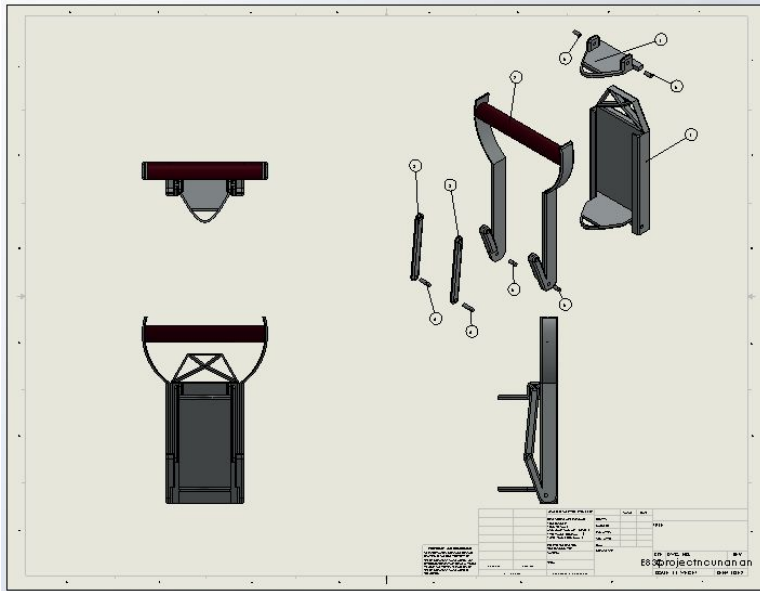
- * 1 Base
- * 1 Lever arm with handle
- * 2 Links
- * 1 Top plate
- * 6 0.2 inch diameter pins
 - * 4 $\frac{1}{2}$ inch long
 - * 2 $\frac{3}{4}$ inch long



Drawings for Each Part



Assembly Drawings



Manufacturing Process

- * The base, top plate, and handle will be cast
- * The links will be CNC milled by
- * The pins will be manufactured on a lathe