

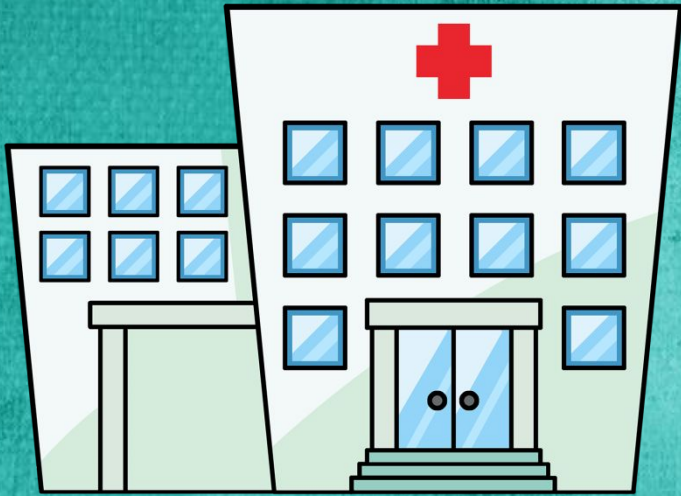
Demonstrative pronouns



THIS - THESE
THAT - THOSE



What is this?



This is a hospital.



This is a car.

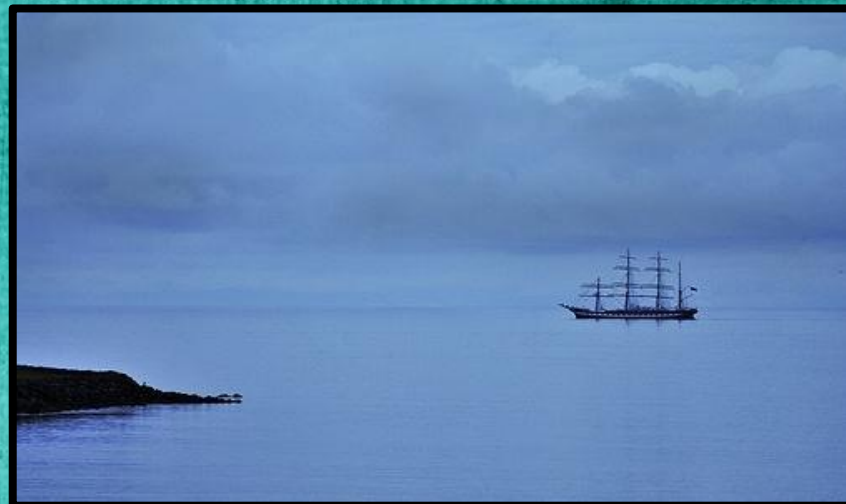


This is a man.

What is that?



That is a tree.



That is a ship.



That is the sun.

What are these?



These are keys.



These are shoes.

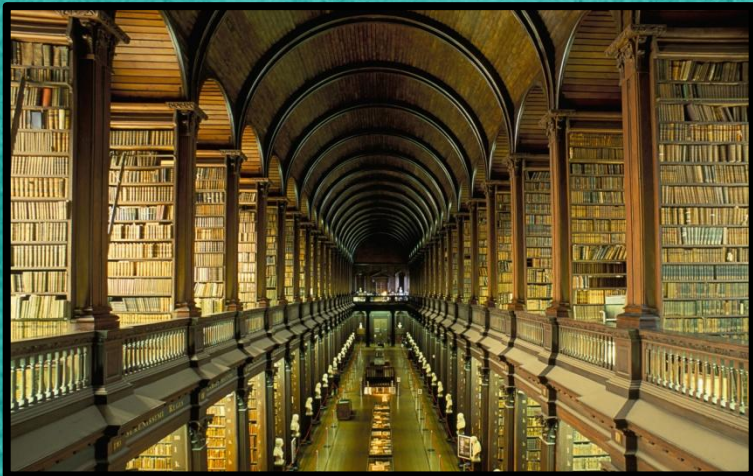


**These are
bananas.**

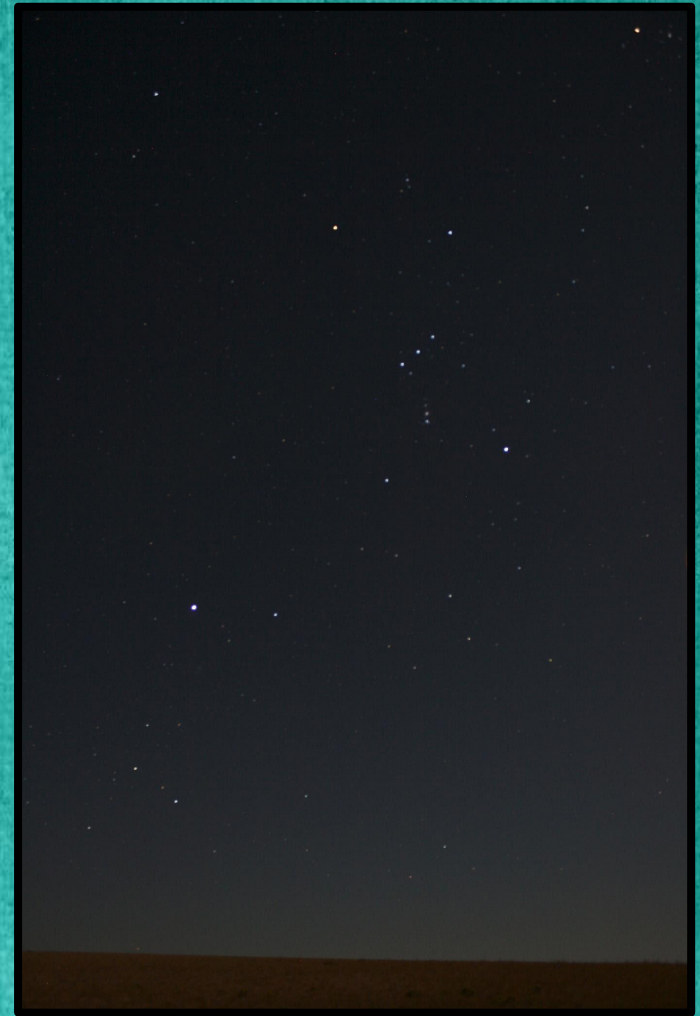
What are those?



Those are people.



Those are books.



Those are the stars.



A

**B. Those are
planes.**

**A. This is
a plane.**



B



**A. That is
a train.**

**B. These are
trains.**





B. These are horses.

A. Those are horses.





**A. That is
a baby.**

B. This is a baby.



Describe a picture



Describe two pictures



Describe a room



Describe the animals

