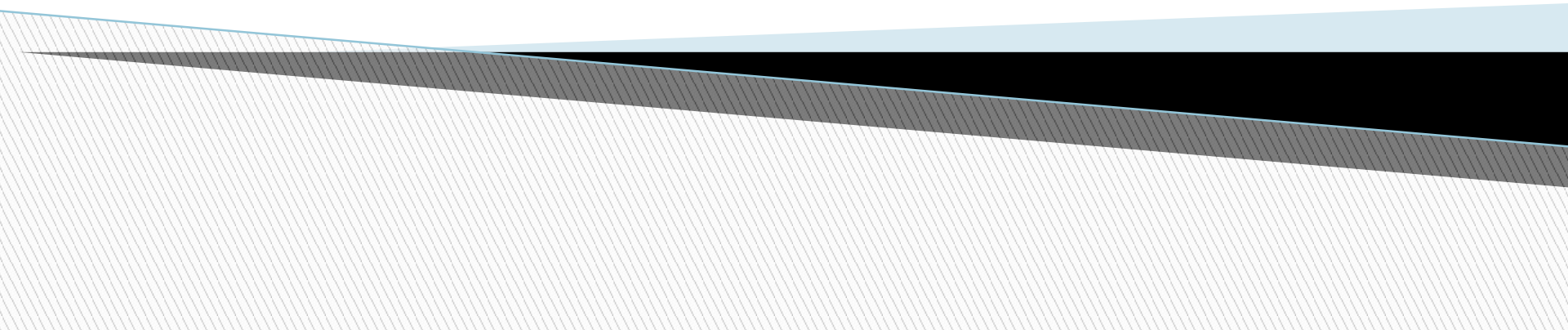
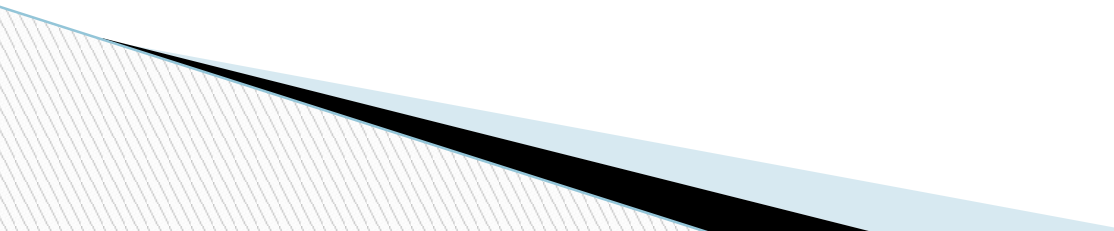
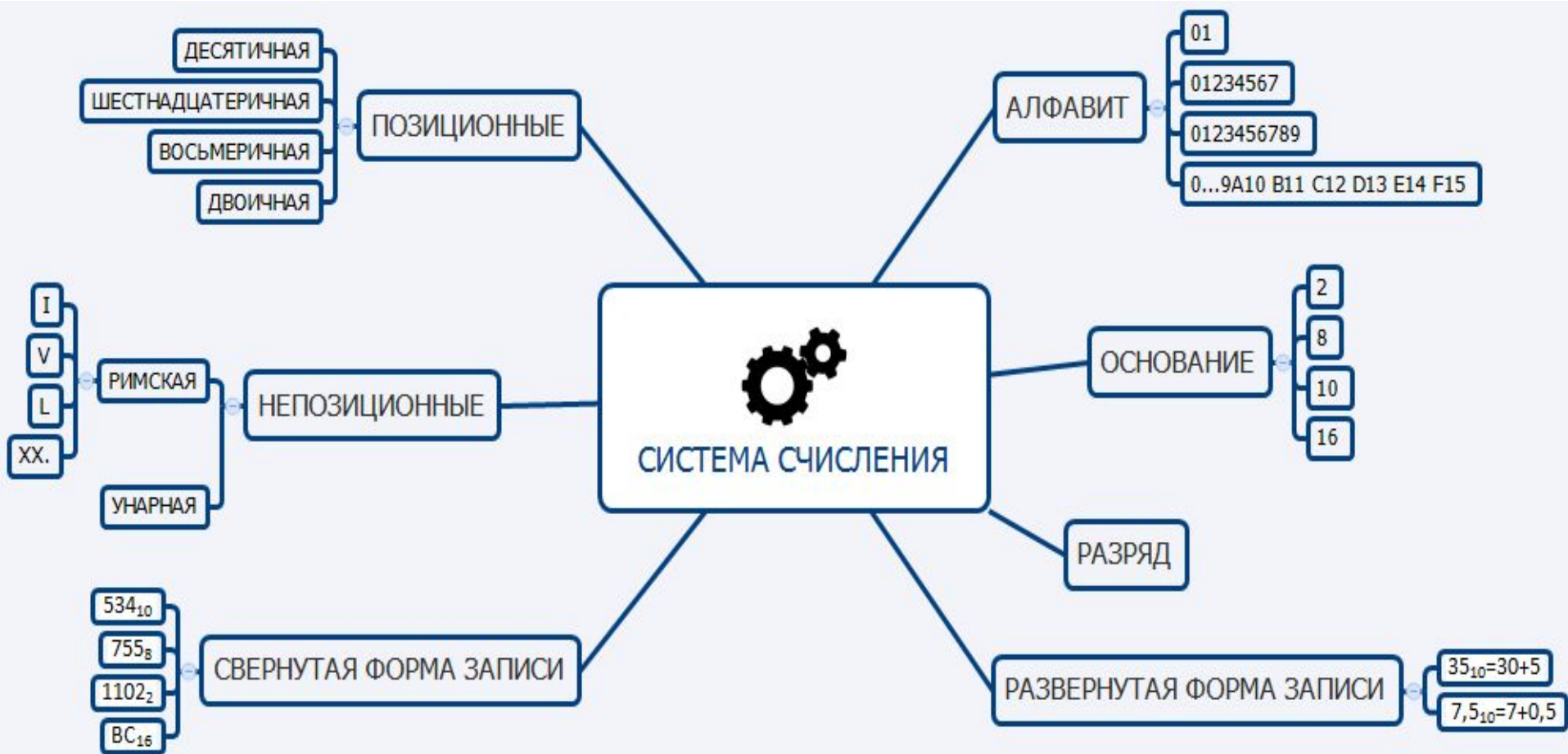


Исследовательская работа на
тему:
«ИСПОЛЬЗОВАНИЕ ИНТЕЛЛЕКТ-КАРТ
ПРИ ПОДГОТОВКЕ К ЕГЭ»



Цель исследования: теоретическое и практическое обоснование образовательной возможности интеллект-карт в подготовке к ЕГЭ.

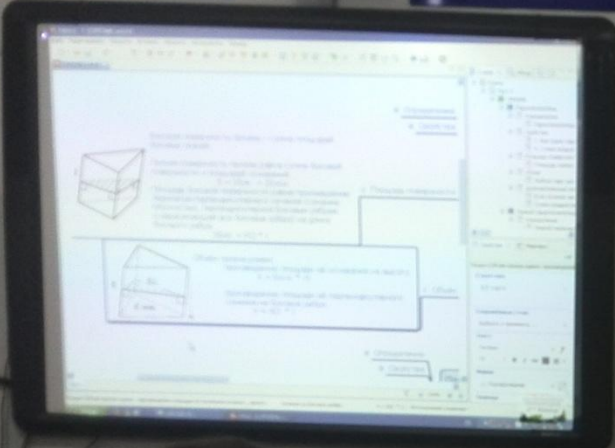






Числа управляют миром!

Математика - это душа, на которой
говорят все точные науки.
Только с помощью математики
строили математические модели.
Л.Н.Лобачевский



Дано: $ABCDA_1B_1C_1D_1$ - куб
 M - середина ребра AA_1 , N - середина ребра CC_1
 K - середина ребра BB_1 , L - середина ребра DD_1
Доказать: $MKNL$ - квадрат
Решение: $MKNL$ - квадрат
Стороны $MK = NL = KL = MN = a/2$
Угол $MKN = 90^\circ$

Решение:
1) $AM = CN = BK = DL = a/2$
2) $AK = CL = BL = DM = a/2$
3) $AK = CL = BL = DM = a/2$
4) $AK = CL = BL = DM = a/2$
5) $AK = CL = BL = DM = a/2$
6) $AK = CL = BL = DM = a/2$
7) $AK = CL = BL = DM = a/2$
8) $AK = CL = BL = DM = a/2$
9) $AK = CL = BL = DM = a/2$
10) $AK = CL = BL = DM = a/2$
11) $AK = CL = BL = DM = a/2$
12) $AK = CL = BL = DM = a/2$
13) $AK = CL = BL = DM = a/2$
14) $AK = CL = BL = DM = a/2$
15) $AK = CL = BL = DM = a/2$
16) $AK = CL = BL = DM = a/2$
17) $AK = CL = BL = DM = a/2$
18) $AK = CL = BL = DM = a/2$
19) $AK = CL = BL = DM = a/2$
20) $AK = CL = BL = DM = a/2$
21) $AK = CL = BL = DM = a/2$
22) $AK = CL = BL = DM = a/2$
23) $AK = CL = BL = DM = a/2$
24) $AK = CL = BL = DM = a/2$
25) $AK = CL = BL = DM = a/2$
26) $AK = CL = BL = DM = a/2$
27) $AK = CL = BL = DM = a/2$
28) $AK = CL = BL = DM = a/2$
29) $AK = CL = BL = DM = a/2$
30) $AK = CL = BL = DM = a/2$
31) $AK = CL = BL = DM = a/2$
32) $AK = CL = BL = DM = a/2$
33) $AK = CL = BL = DM = a/2$
34) $AK = CL = BL = DM = a/2$
35) $AK = CL = BL = DM = a/2$
36) $AK = CL = BL = DM = a/2$
37) $AK = CL = BL = DM = a/2$
38) $AK = CL = BL = DM = a/2$
39) $AK = CL = BL = DM = a/2$
40) $AK = CL = BL = DM = a/2$
41) $AK = CL = BL = DM = a/2$
42) $AK = CL = BL = DM = a/2$
43) $AK = CL = BL = DM = a/2$
44) $AK = CL = BL = DM = a/2$
45) $AK = CL = BL = DM = a/2$
46) $AK = CL = BL = DM = a/2$
47) $AK = CL = BL = DM = a/2$
48) $AK = CL = BL = DM = a/2$
49) $AK = CL = BL = DM = a/2$
50) $AK = CL = BL = DM = a/2$
51) $AK = CL = BL = DM = a/2$
52) $AK = CL = BL = DM = a/2$
53) $AK = CL = BL = DM = a/2$
54) $AK = CL = BL = DM = a/2$
55) $AK = CL = BL = DM = a/2$
56) $AK = CL = BL = DM = a/2$
57) $AK = CL = BL = DM = a/2$
58) $AK = CL = BL = DM = a/2$
59) $AK = CL = BL = DM = a/2$
60) $AK = CL = BL = DM = a/2$
61) $AK = CL = BL = DM = a/2$
62) $AK = CL = BL = DM = a/2$
63) $AK = CL = BL = DM = a/2$
64) $AK = CL = BL = DM = a/2$
65) $AK = CL = BL = DM = a/2$
66) $AK = CL = BL = DM = a/2$
67) $AK = CL = BL = DM = a/2$
68) $AK = CL = BL = DM = a/2$
69) $AK = CL = BL = DM = a/2$
70) $AK = CL = BL = DM = a/2$
71) $AK = CL = BL = DM = a/2$
72) $AK = CL = BL = DM = a/2$
73) $AK = CL = BL = DM = a/2$
74) $AK = CL = BL = DM = a/2$
75) $AK = CL = BL = DM = a/2$
76) $AK = CL = BL = DM = a/2$
77) $AK = CL = BL = DM = a/2$
78) $AK = CL = BL = DM = a/2$
79) $AK = CL = BL = DM = a/2$
80) $AK = CL = BL = DM = a/2$
81) $AK = CL = BL = DM = a/2$
82) $AK = CL = BL = DM = a/2$
83) $AK = CL = BL = DM = a/2$
84) $AK = CL = BL = DM = a/2$
85) $AK = CL = BL = DM = a/2$
86) $AK = CL = BL = DM = a/2$
87) $AK = CL = BL = DM = a/2$
88) $AK = CL = BL = DM = a/2$
89) $AK = CL = BL = DM = a/2$
90) $AK = CL = BL = DM = a/2$
91) $AK = CL = BL = DM = a/2$
92) $AK = CL = BL = DM = a/2$
93) $AK = CL = BL = DM = a/2$
94) $AK = CL = BL = DM = a/2$
95) $AK = CL = BL = DM = a/2$
96) $AK = CL = BL = DM = a/2$
97) $AK = CL = BL = DM = a/2$
98) $AK = CL = BL = DM = a/2$
99) $AK = CL = BL = DM = a/2$
100) $AK = CL = BL = DM = a/2$

