

Тема 2: Основы моделирования в Rose

Where Are We?

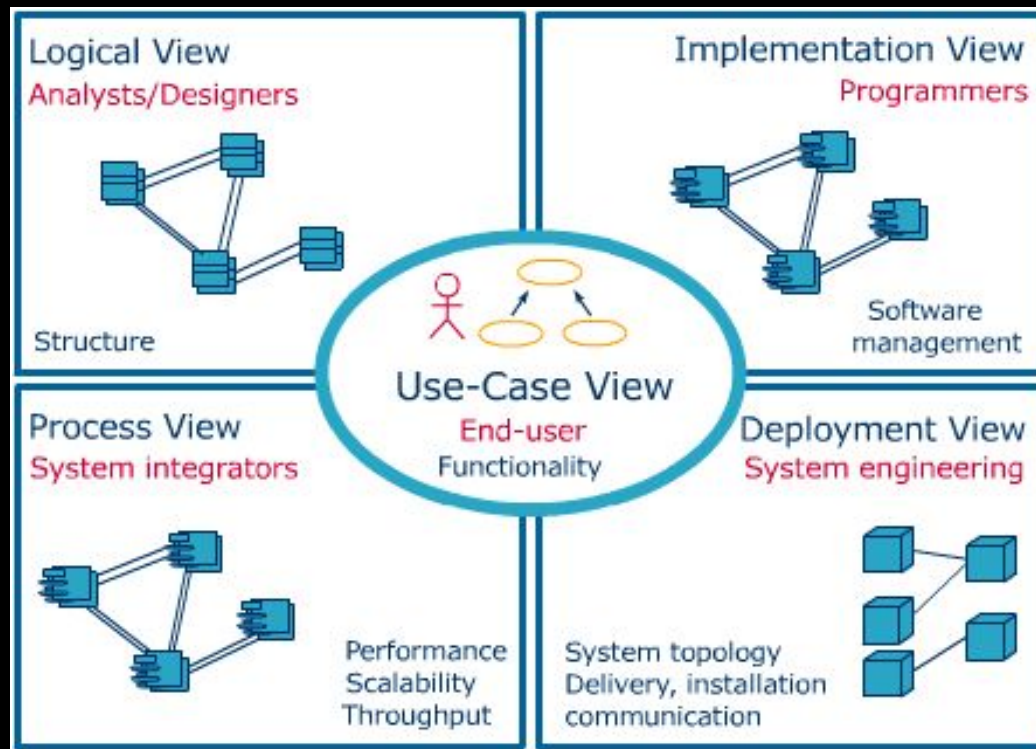
- ★◆ Views and diagrams in Rational Rose
 - ◆ Rational Rose interface
 - ◆ Basic tool techniques

How Do I Construct a Model?

- ◆ Models are constructed using views to depict different perspectives and diagrams to depict a system's building blocks.

Views

- ◆ A view is a perspective of the model that is meaningful to specific stakeholders.



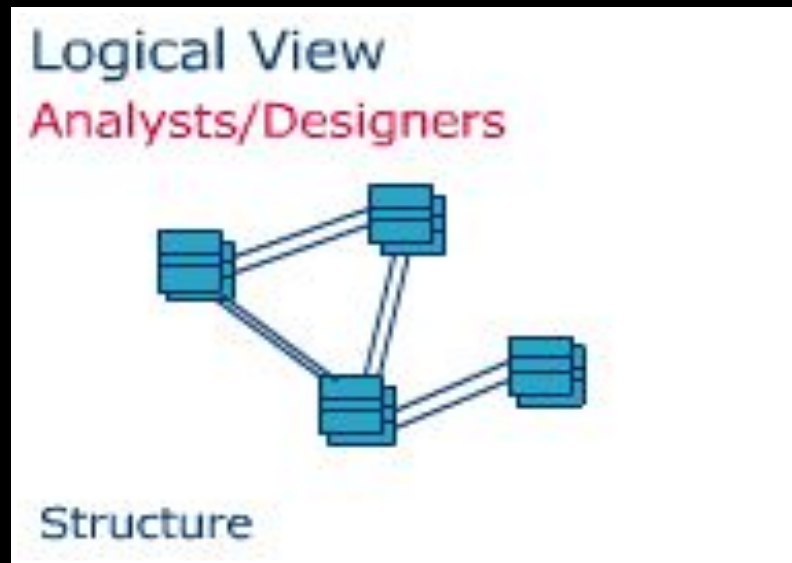
Use-Case View

- ◆ The Use-Case View is the “heart” of the other views because it specifies WHAT the system should do.



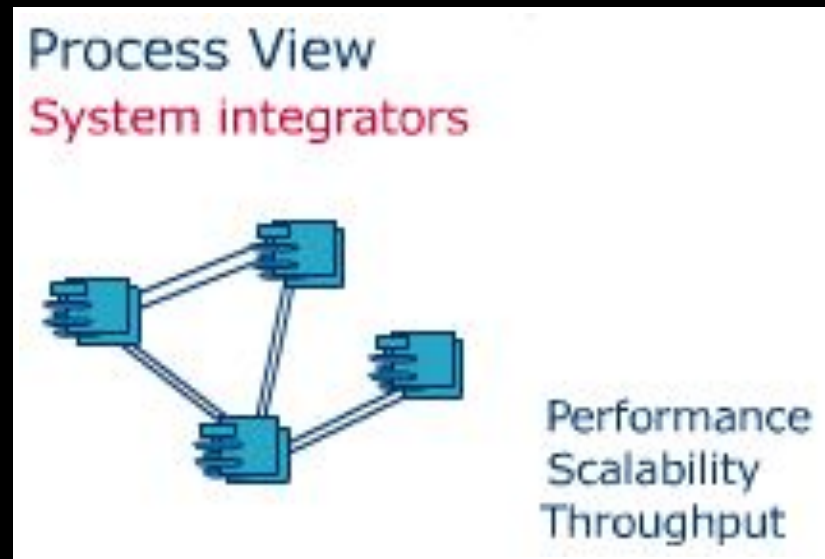
Logical View

- ◆ The Logical View supports the functional requirements of the system.



Process View

- ◆ The Process View addresses the performance, scalability, and throughput of the system.



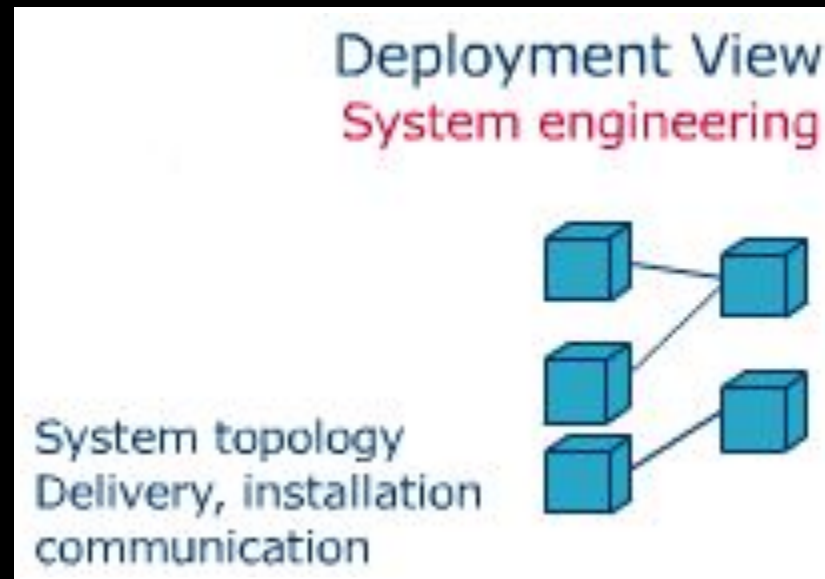
Component View (Implementation View)

- ◆ In Rose, the Implementation View is called the Component View.
- ◆ The Component View addresses ease of development, management of software assets, reuse, sub-contracting, and off-the-shelf components.



Deployment View

- ◆ The Deployment View addresses issues like deployment, installation, and performance.



What Are Diagrams?

- ◆ A diagram is a graphical means to view a system's parts, including classes, interfaces, collaborations, components, nodes, dependencies, generalizations, and associations.

Where Are We?

- ◆ Views and diagrams in Rational Rose
- ★◆ Rational Rose interface
- ◆ Basic tool techniques

Rational Rose Interface

- ◆ The Rose interface includes the following
 - Browser
 - Diagram window
 - Diagram toolbar
 - Documentation window
 - Log window
 - Options window

The Browser

- ◆ The browser allows you to textually view and navigate the views and diagrams in Rational Rose.

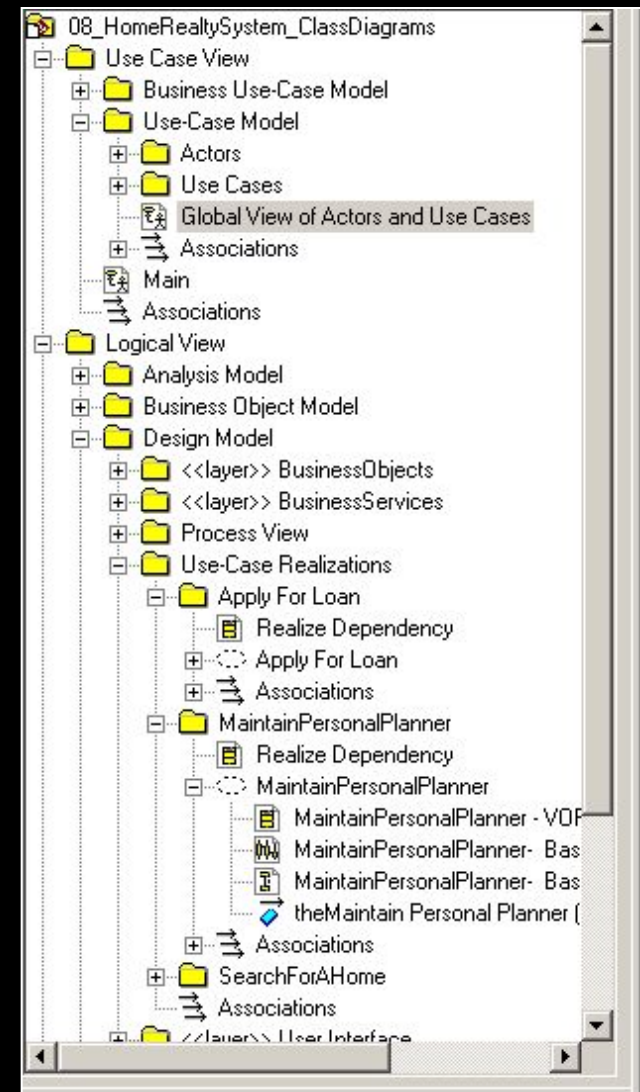


Diagram Window

- ◆ The diagram window allows you to create and update graphical views of the current model.

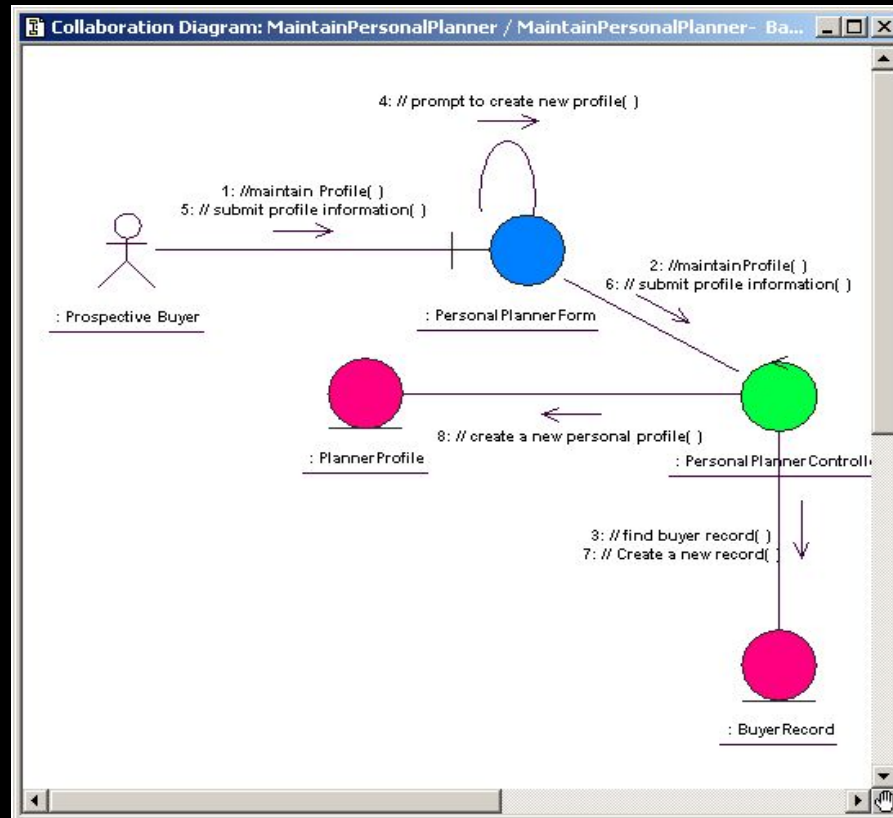


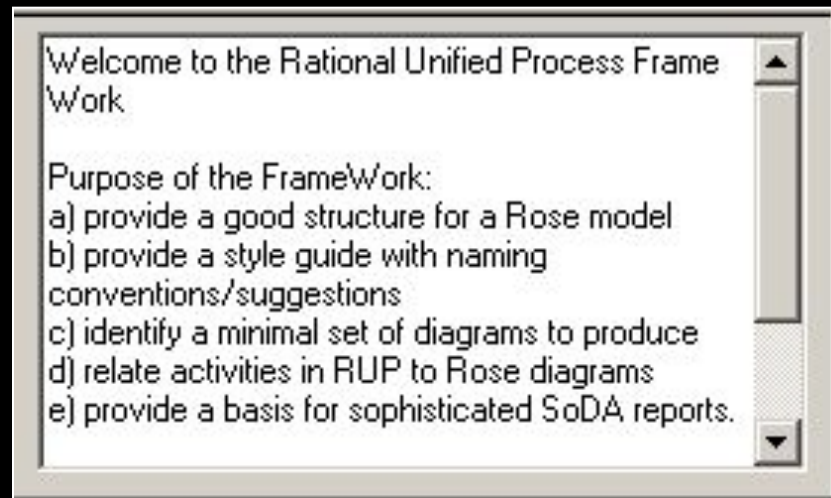
Diagram Toolbar

- ◆ The diagram toolbar includes the elements to build a diagram.
- ◆ Each diagram's toolbar is unique to that diagram.
- ◆ It is active only when the diagram is displayed.



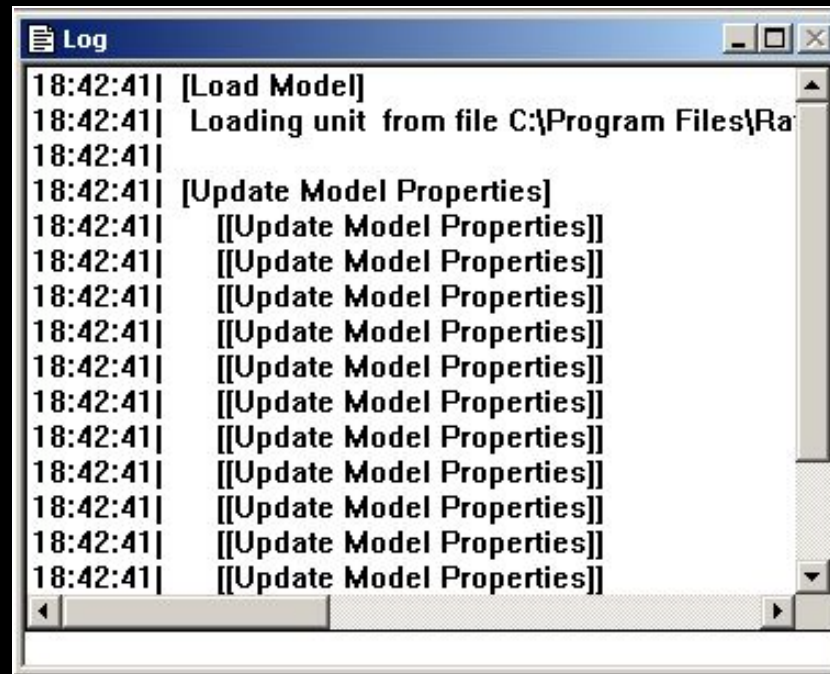
Documentation Window

- ◆ The documentation window is used to create, view, or modify text that explains a selected item within a diagram.



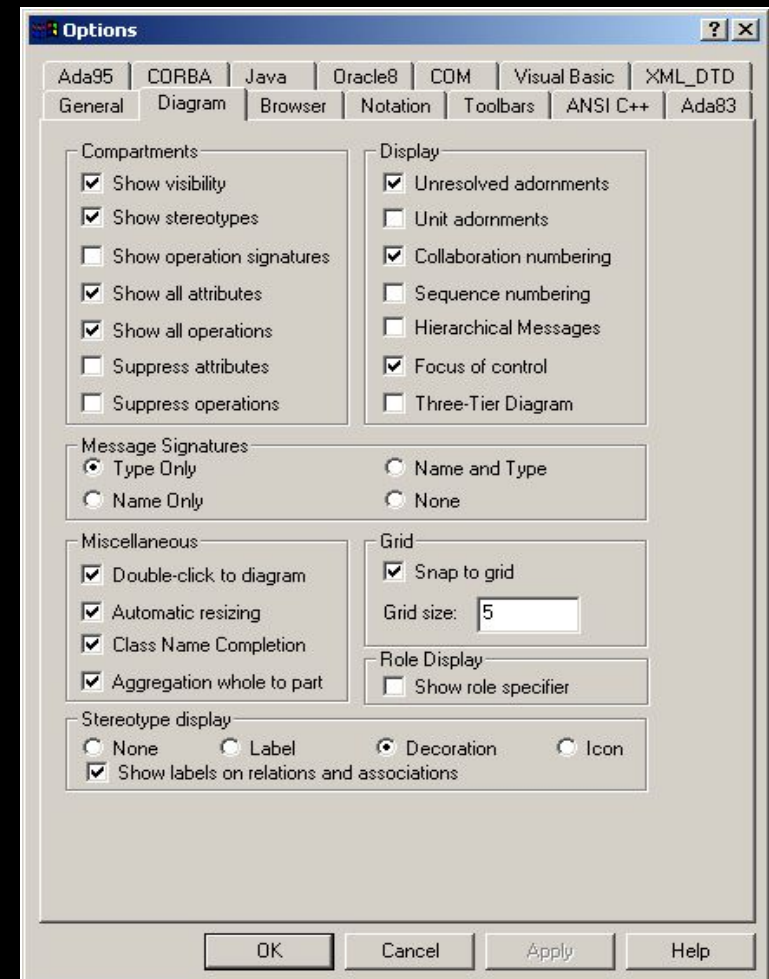
Log Window

- ◆ The log window reports progress, results, and errors. For example, code generation commands post progress and error messages to this window.



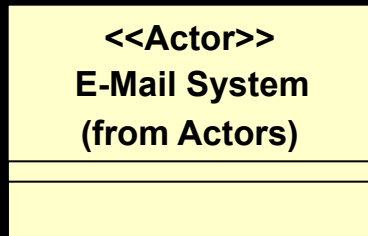
Options Window

- ◆ The Options window is used to set all of your defaults for modeling.
- ◆ Note that if you change the defaults, existing model elements are not changed.

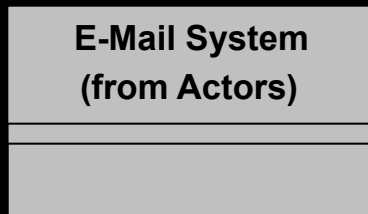


Stereotype Display

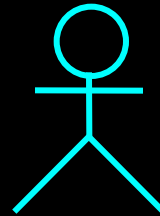
- ◆ This option lets you select how you want stereotypes to appear on your diagrams.



Label

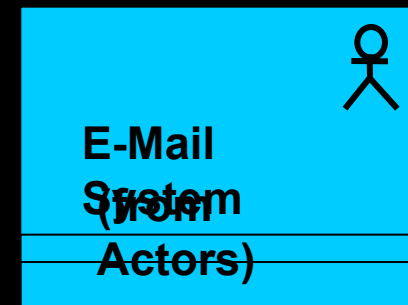


None



E-Mail System
(from Actors)

Icon



Decoration

Where Are We?

- ◆ Views and diagrams in Rational Rose
- ◆ Rational Rose interface
- ★◆ Basic tool techniques

Basic Tool Techniques

- ◆ There are two basic tool techniques we will discuss before you begin the labs. They are
 - Deleting diagram elements
 - Adding diagram elements

Deleting Diagram Elements

- ◆ What happens when you delete an element from the browser? Rose does the following
 - Removes the selected element from the model.
 - Removes all icons representing the element from all diagrams on which they appear.
 - Deletes the specification for the element.

Deleting Diagram Elements

- ◆ What happens when you delete an element from a diagram?
 - Rose removes the selection from the current diagram, BUT DOES NOT CHANGE THE MODEL unless the icon is unnamed and appears only once in the current diagram and in no other diagrams.

Adding Diagram Elements

- ◆ How do you add diagram elements?
 - You add elements to a diagram from either the diagram toolbar or the browser.

Review

1. What are views?
2. Name a view in Rose and discuss its purpose.
3. Name two features of the Rose interface.
4. Discuss deleting from the browser versus the diagram.

