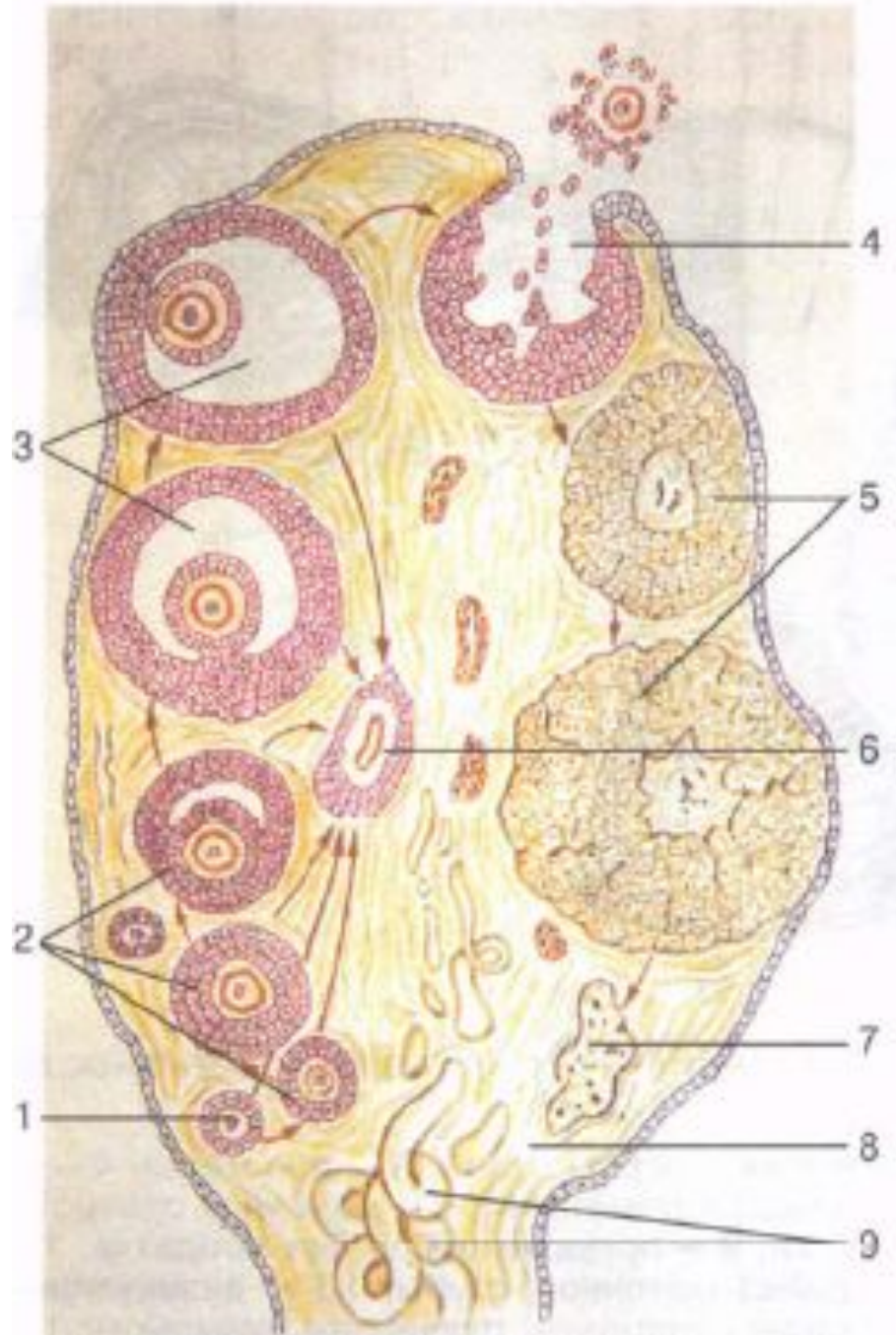
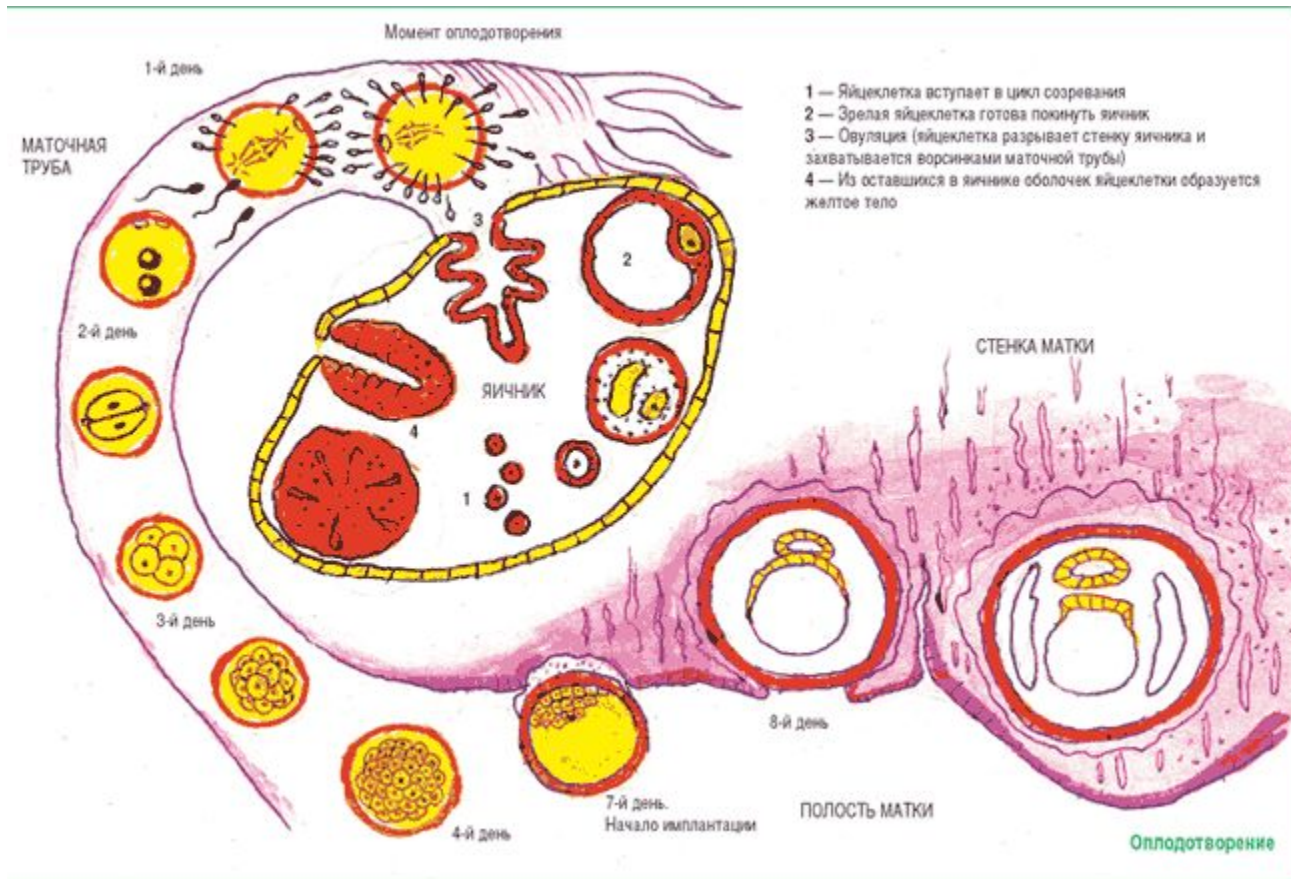
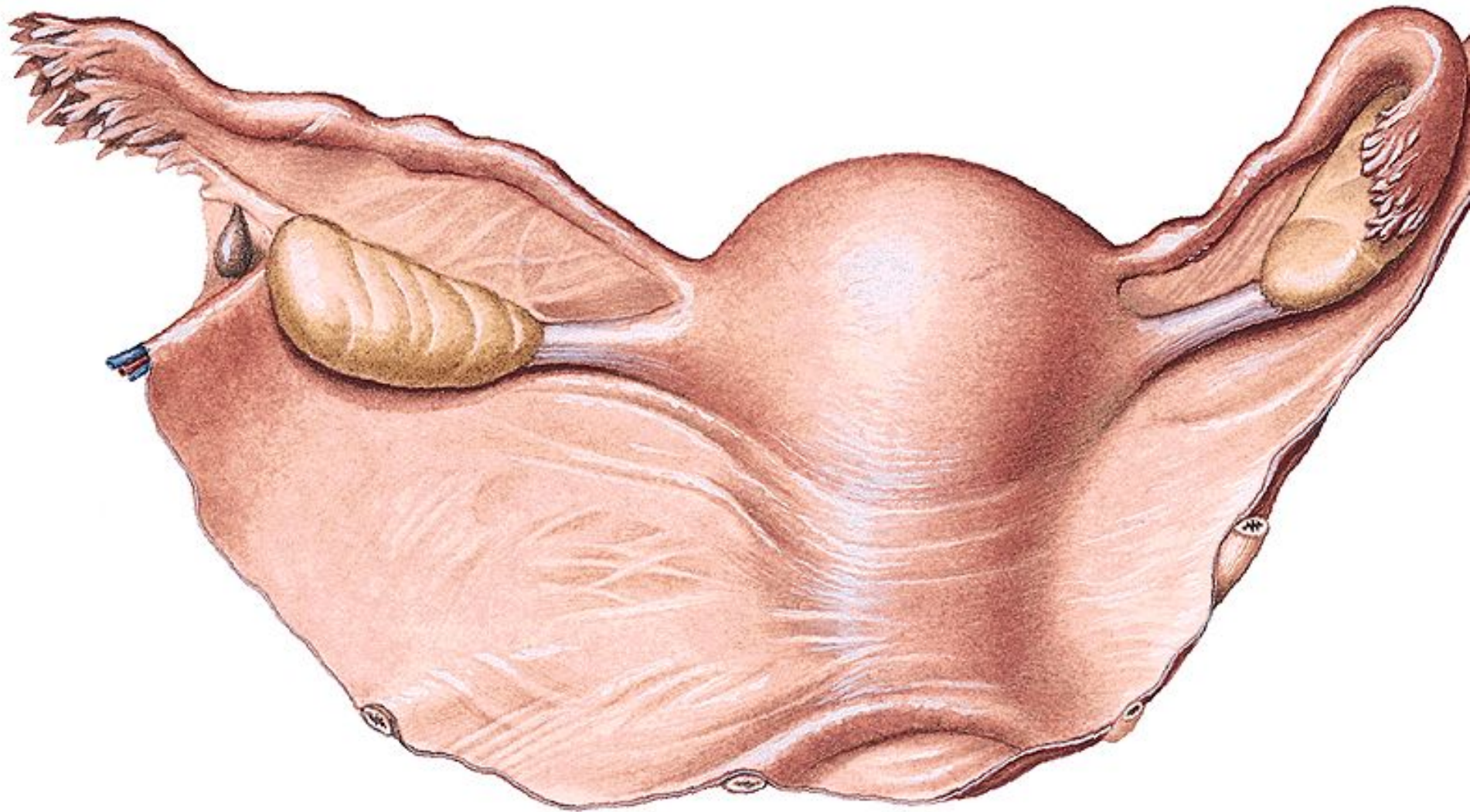


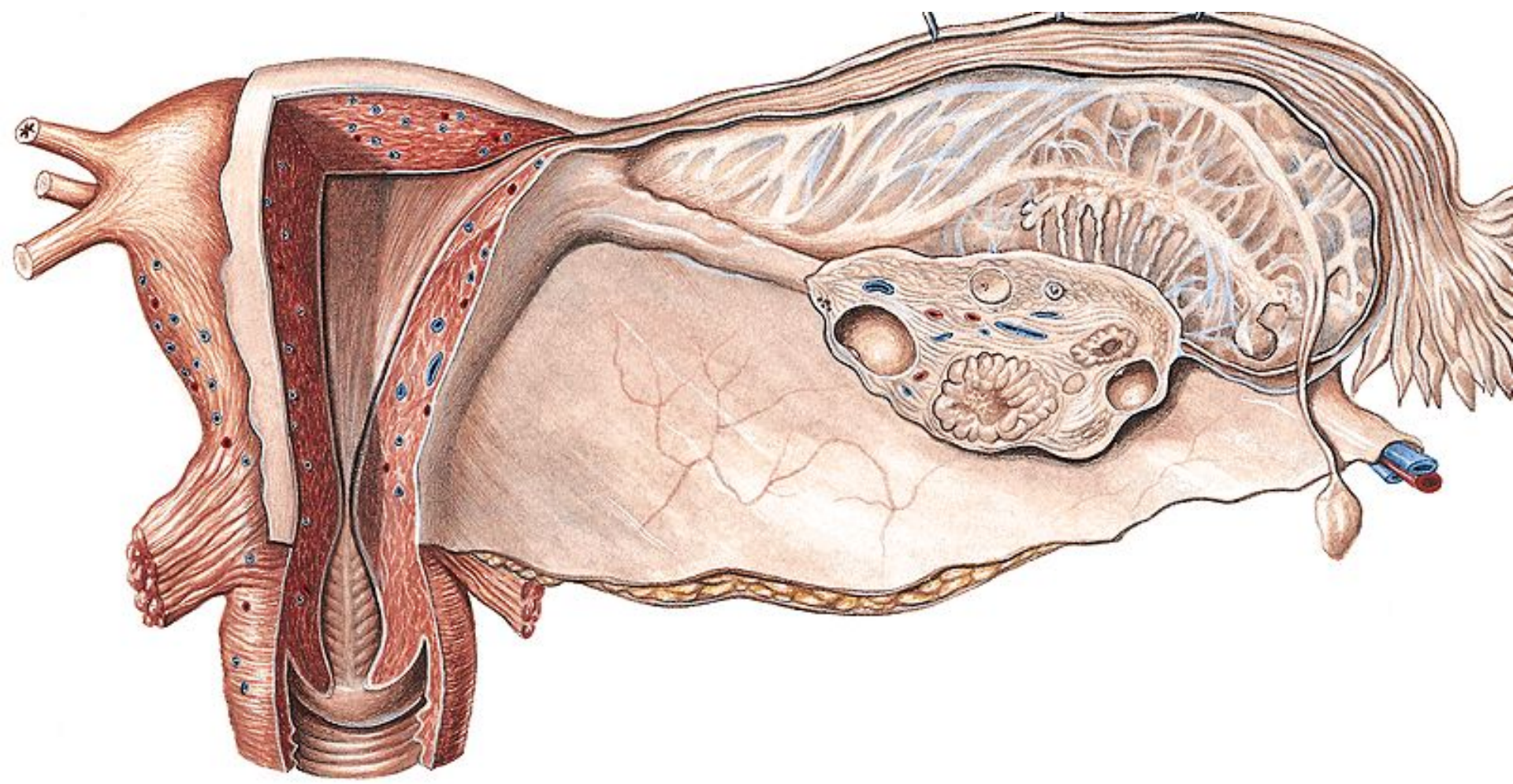
# CLASSIFICATION OF FEMALE GENITALS:

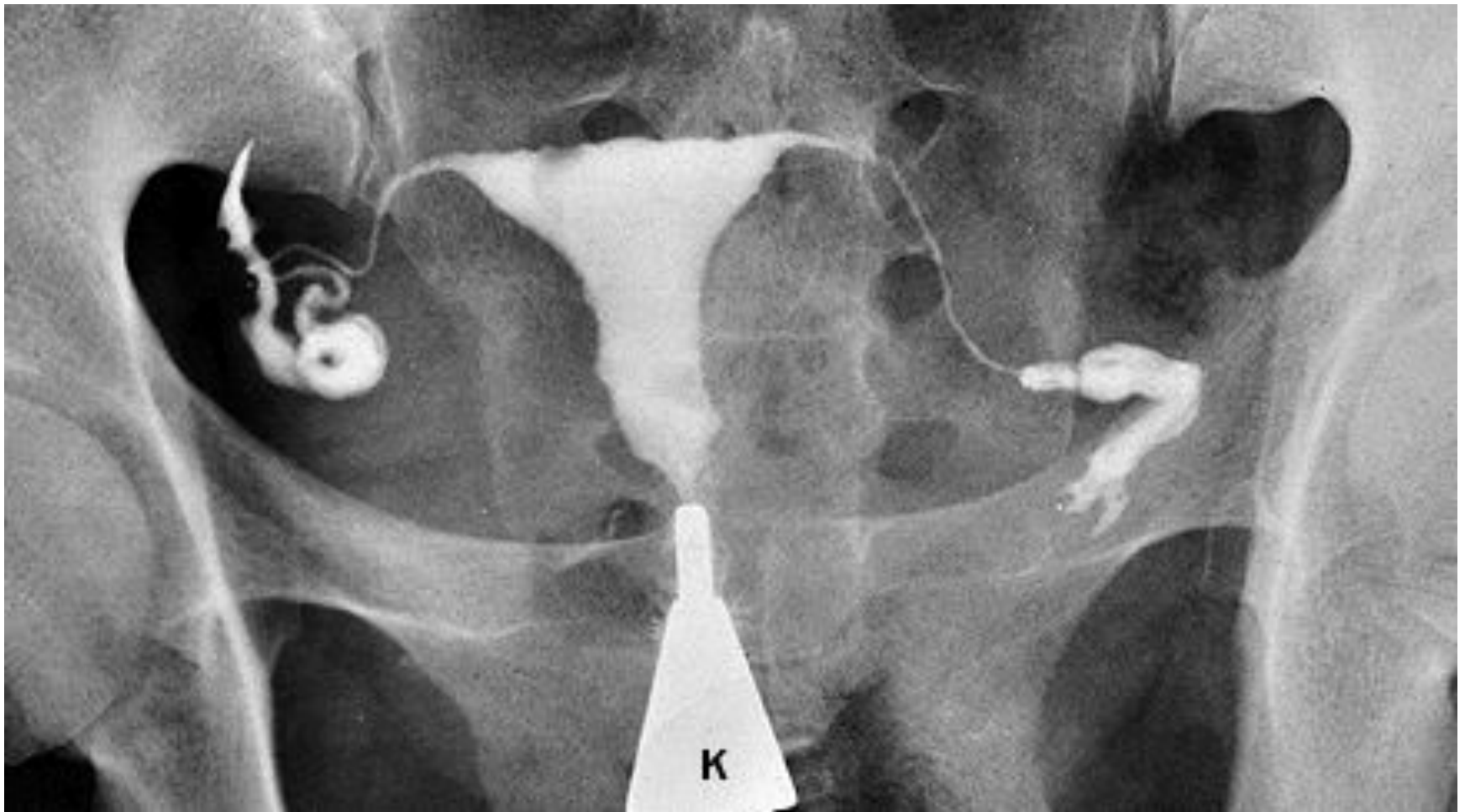
1. Organa genitalia feminina interna:  
ovarium, tuba uterine, uterus, vagina,  
oporoëphoron, paroëphoron
2. Organo genitalia feminina externa  
(Pudendum femininum): Mons pubis,  
labium majus pudendi, labium minus  
pudendi, Jll.vestibulares minores, jll.  
.vestibularis major, clitoris



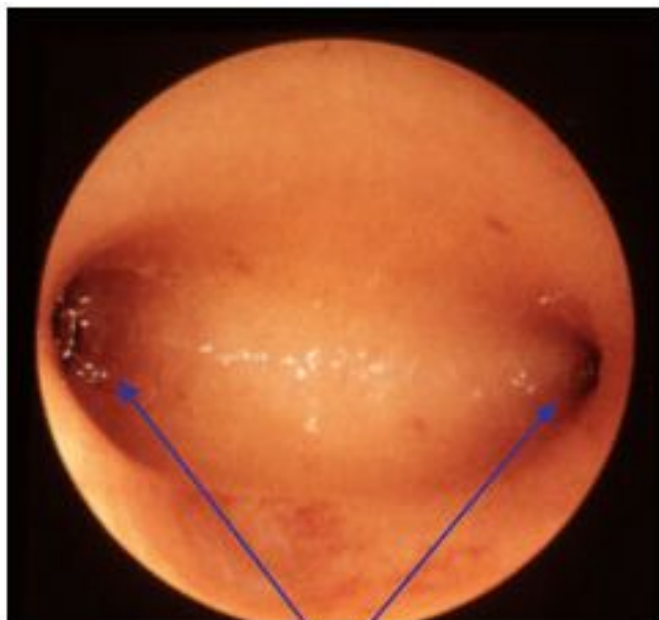




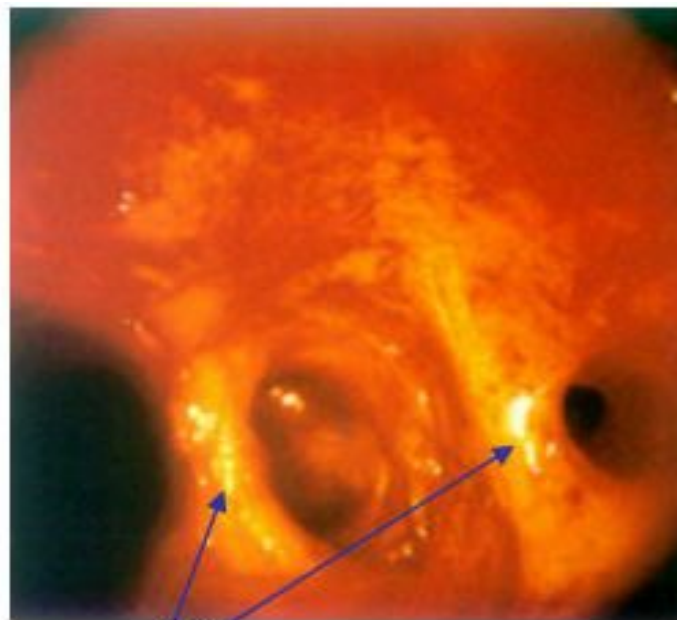




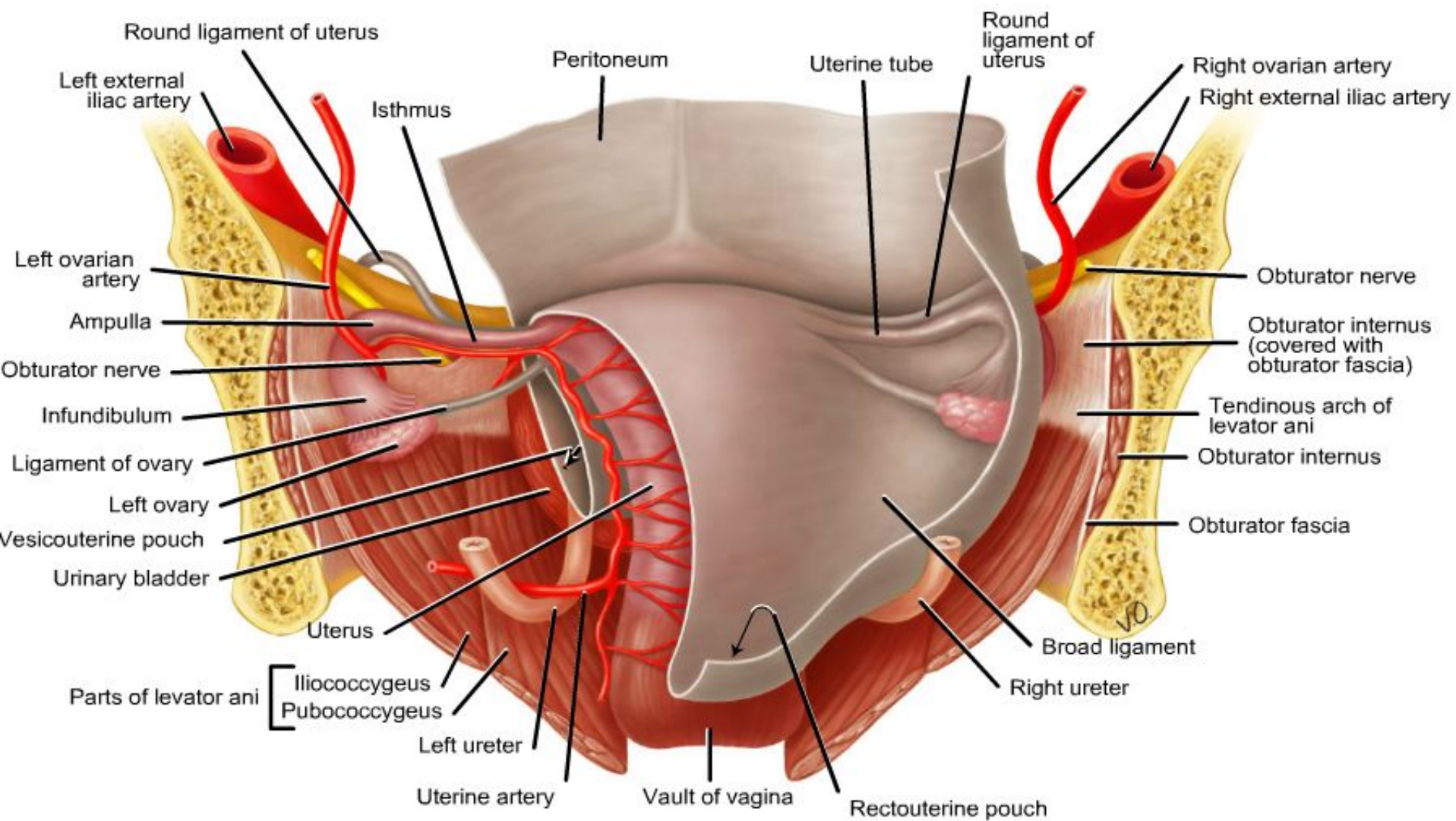
Uterus, Uterus; uterine (fallopian) tube, Tuba uterina; ap-radiograph after injection of a contrast medium through the neck of the uterus (hysterosalpingography); central view. This clinical method can be used to check for luminal obstruction in the uterine tube. K= adapter of the injection tube for the contrast medium



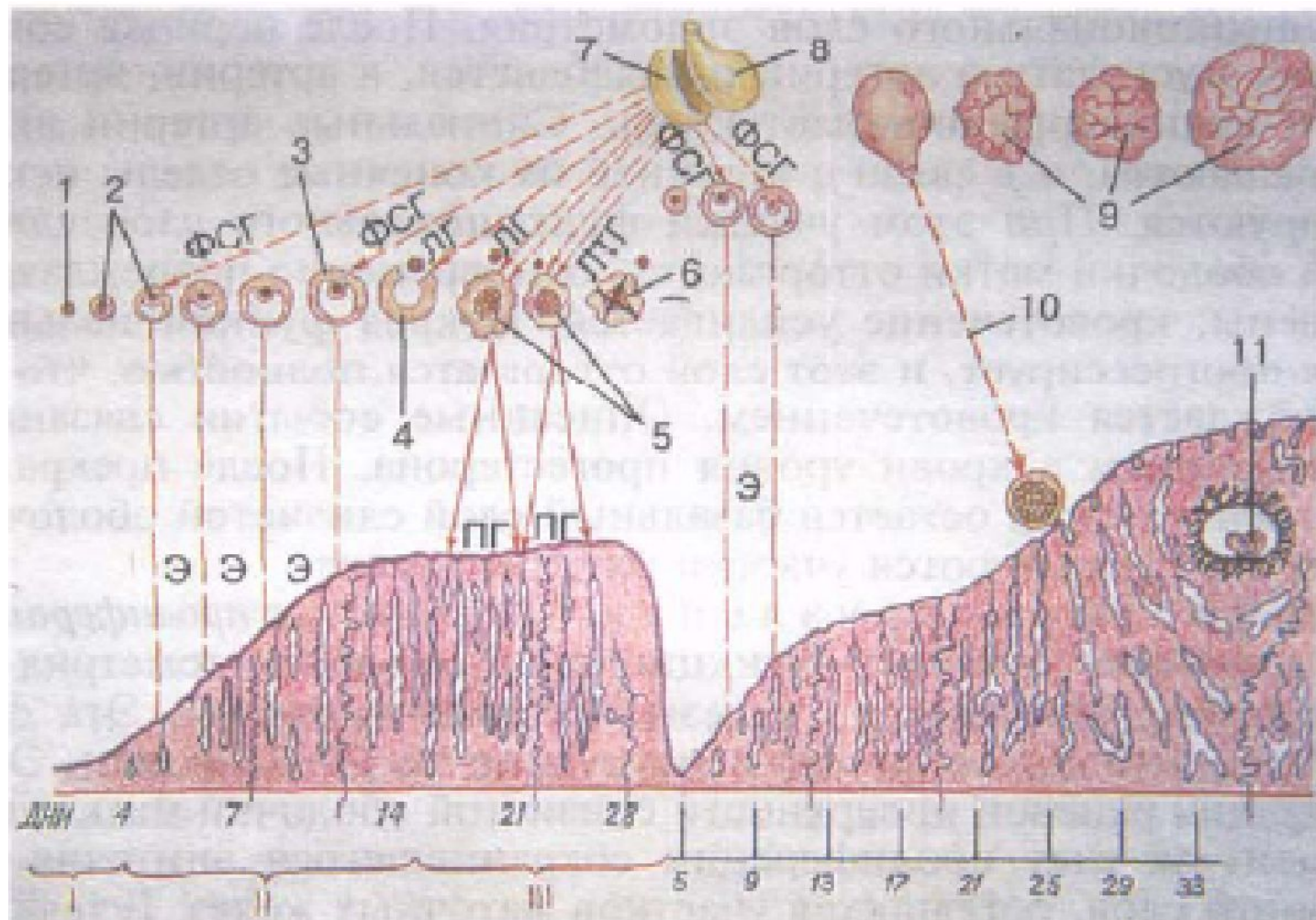
Так выглядит нормальная полость матки. Хорошо видны начальные участки маточных труб - устья (показаны стрелками)

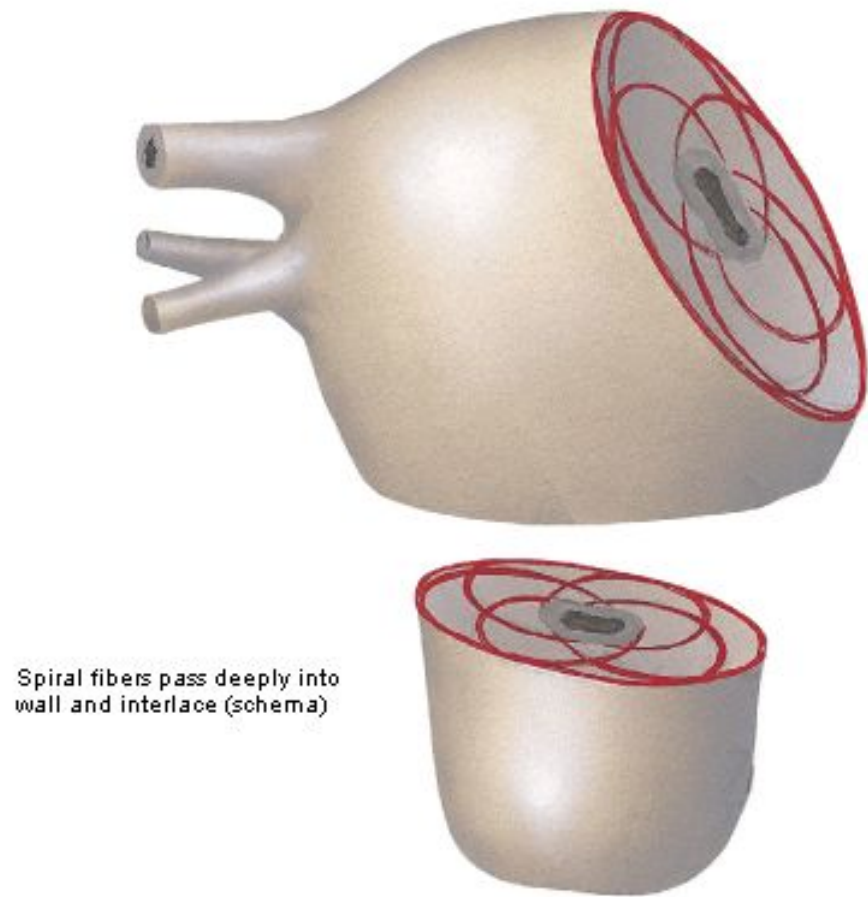
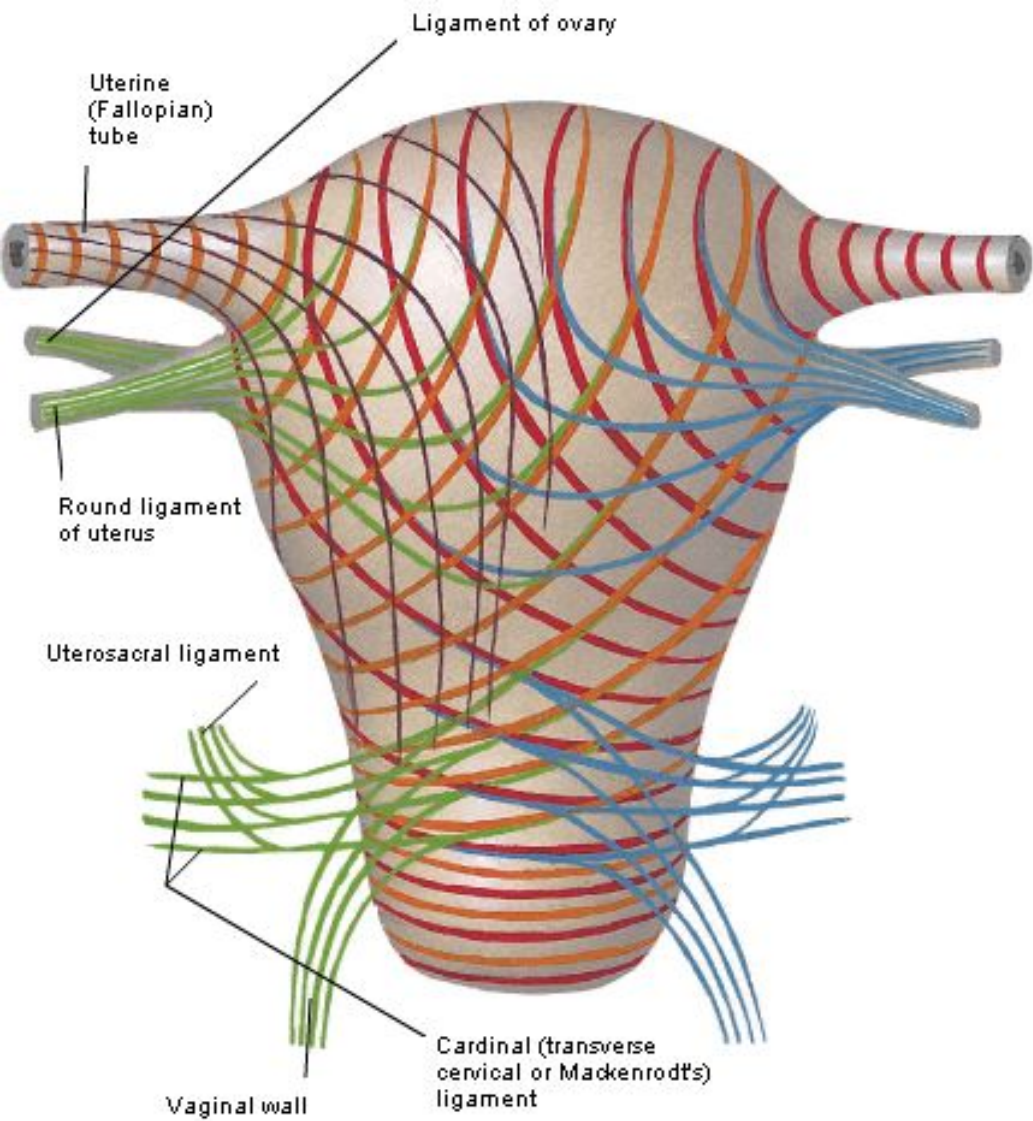


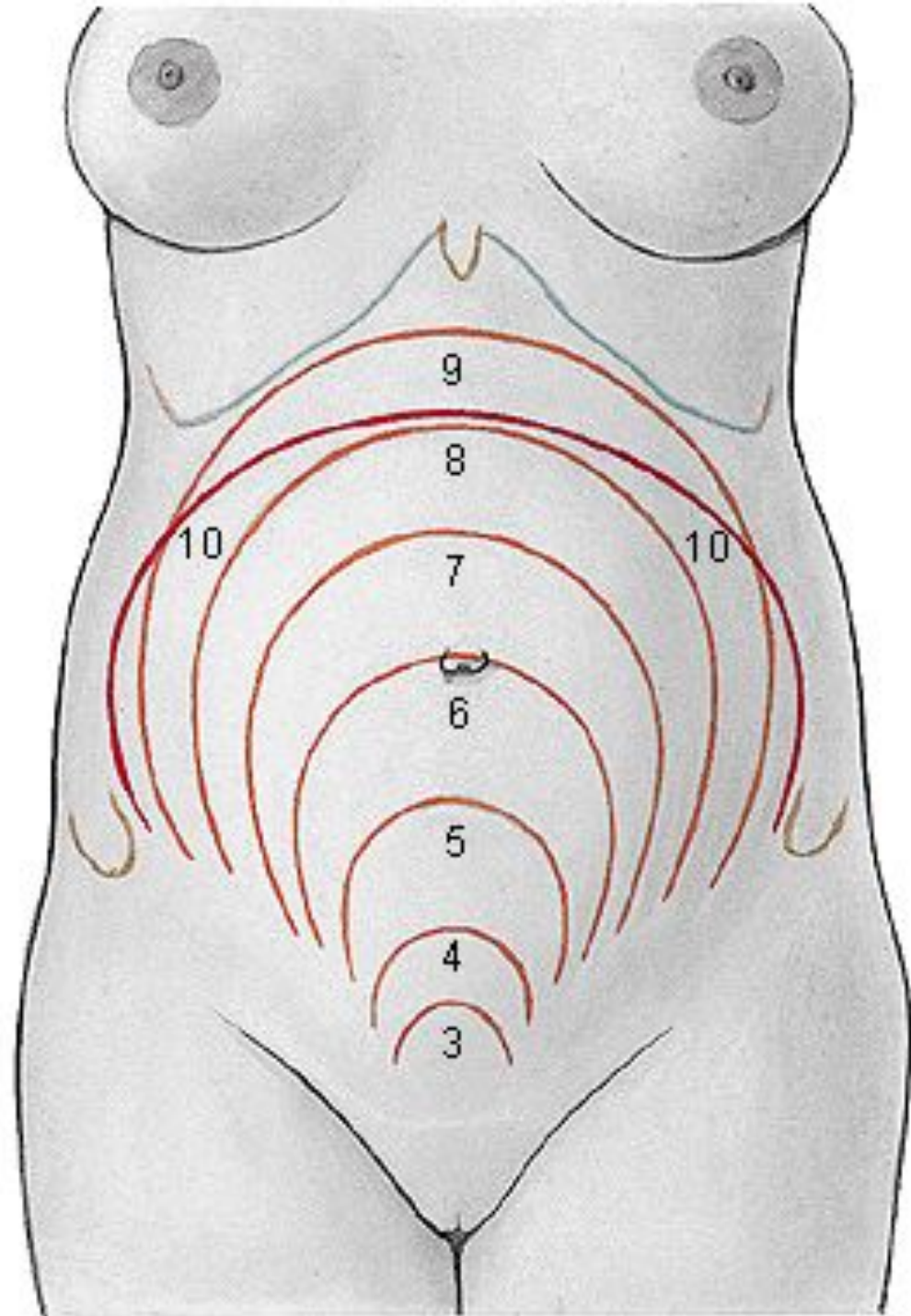
Так выглядит спаечный процесс в полости матки (синехии)













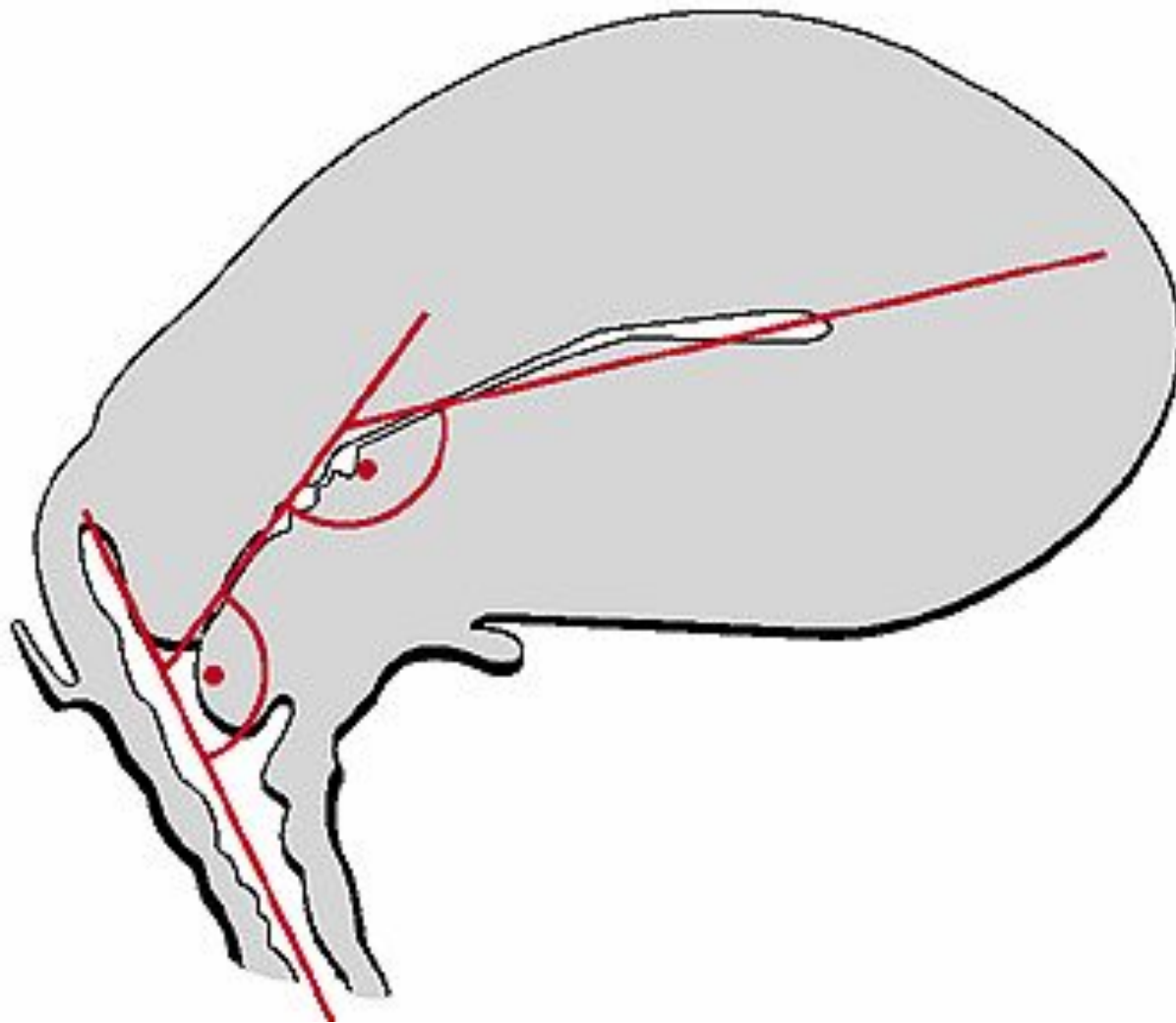
3 month



5 month



7 month



Uterus, Uterus, Vagina, Vagina, normal angles between the vagina, the cervix and the corpus of the uterus, schematic median section, lateral view.

\* **longitudinal axis of the vagina**

\*\* **longitudinal axis of the cervix of the uterus**

Altered rectal contour  
in 3rd degree

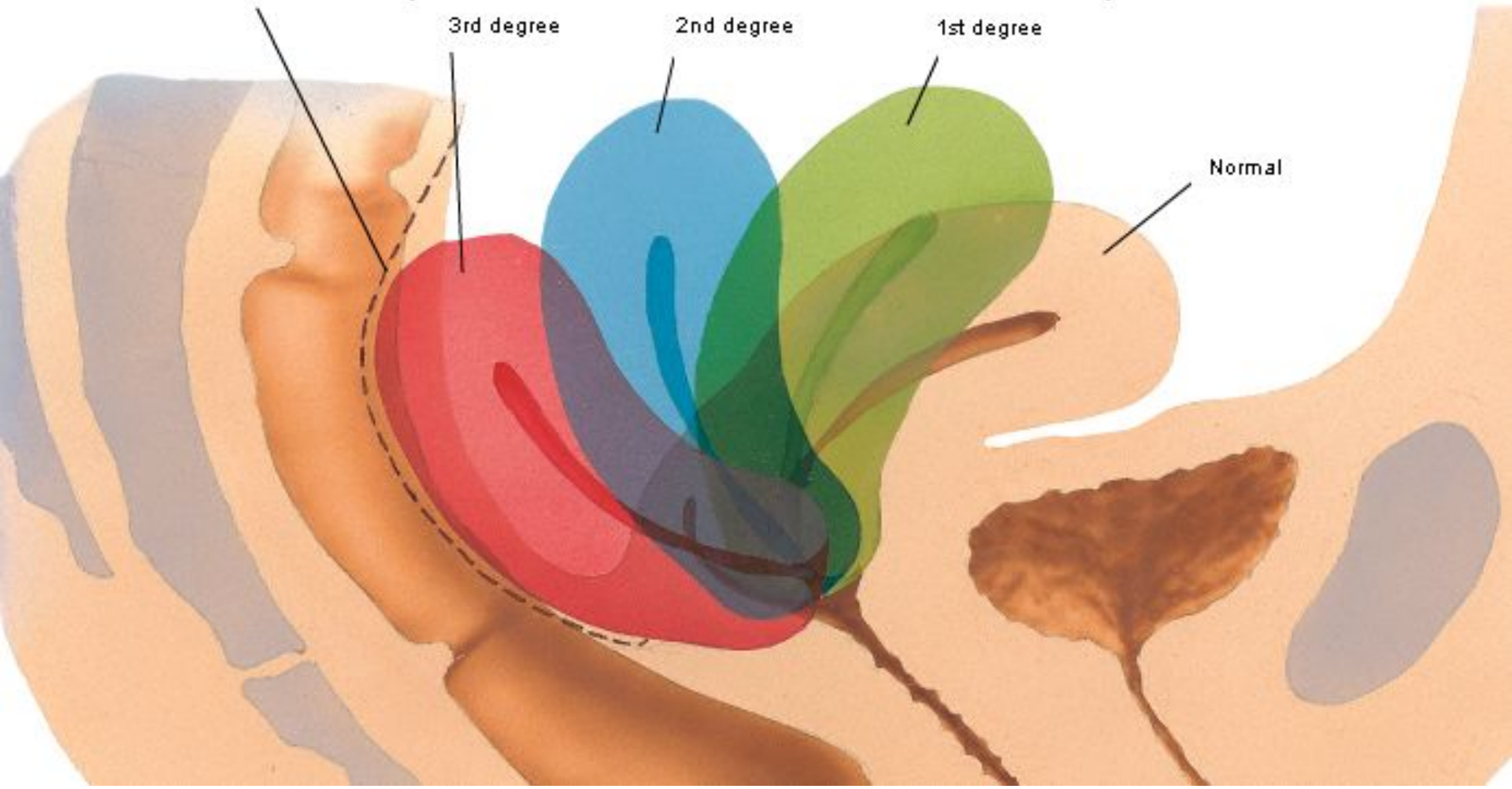
Degrees of retroversion

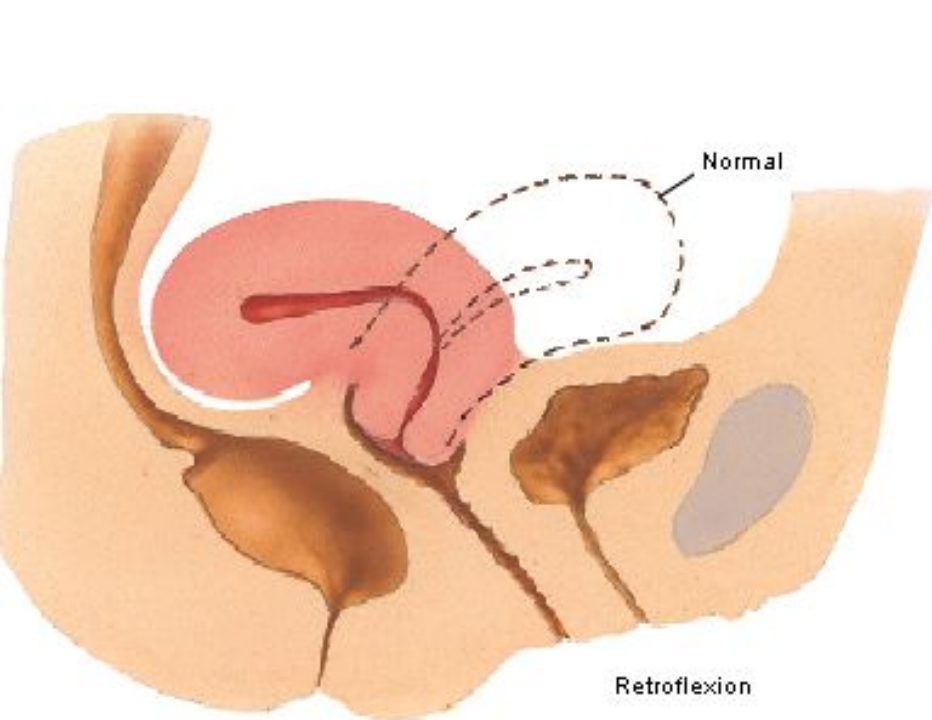
3rd degree

2nd degree

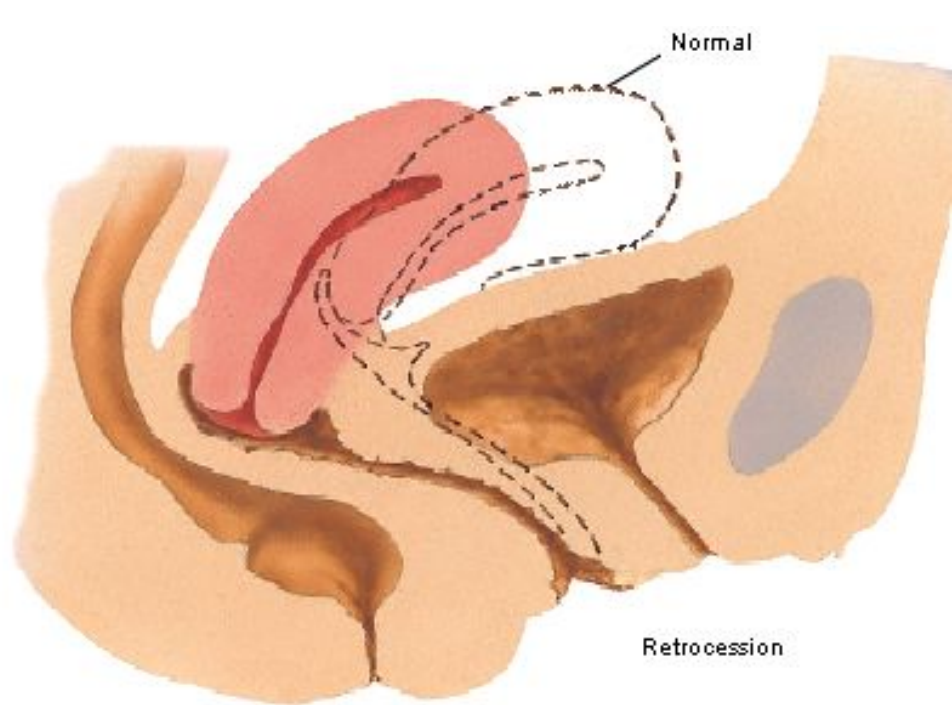
1st degree

Normal

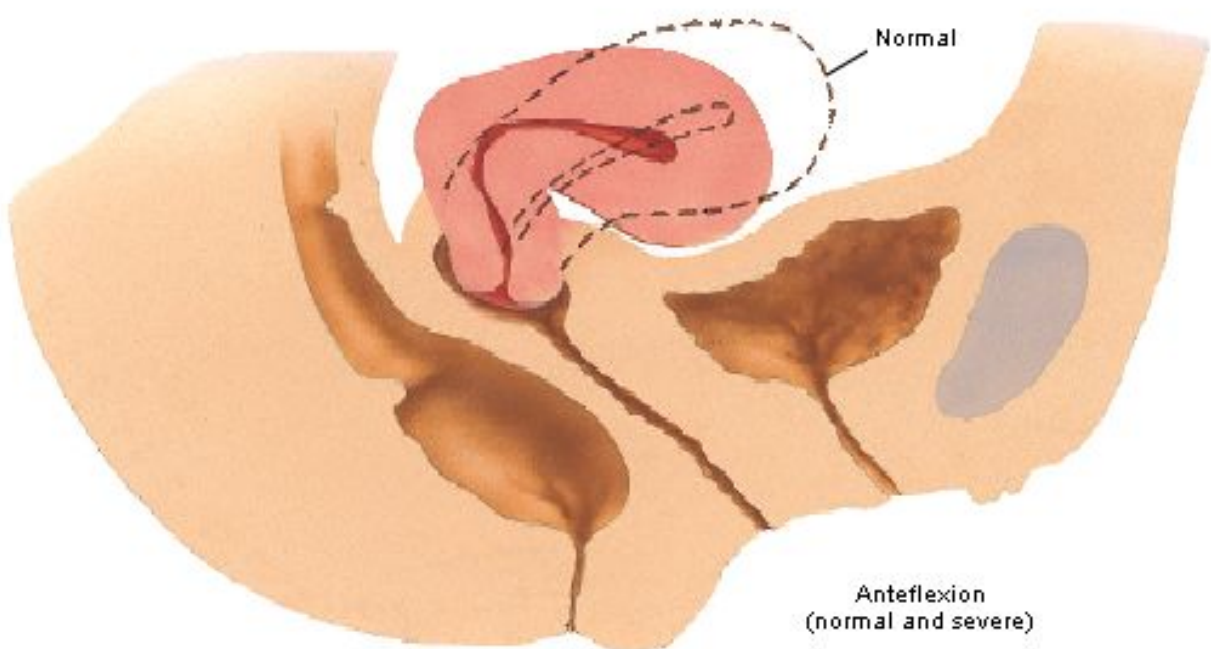




Retroflexion



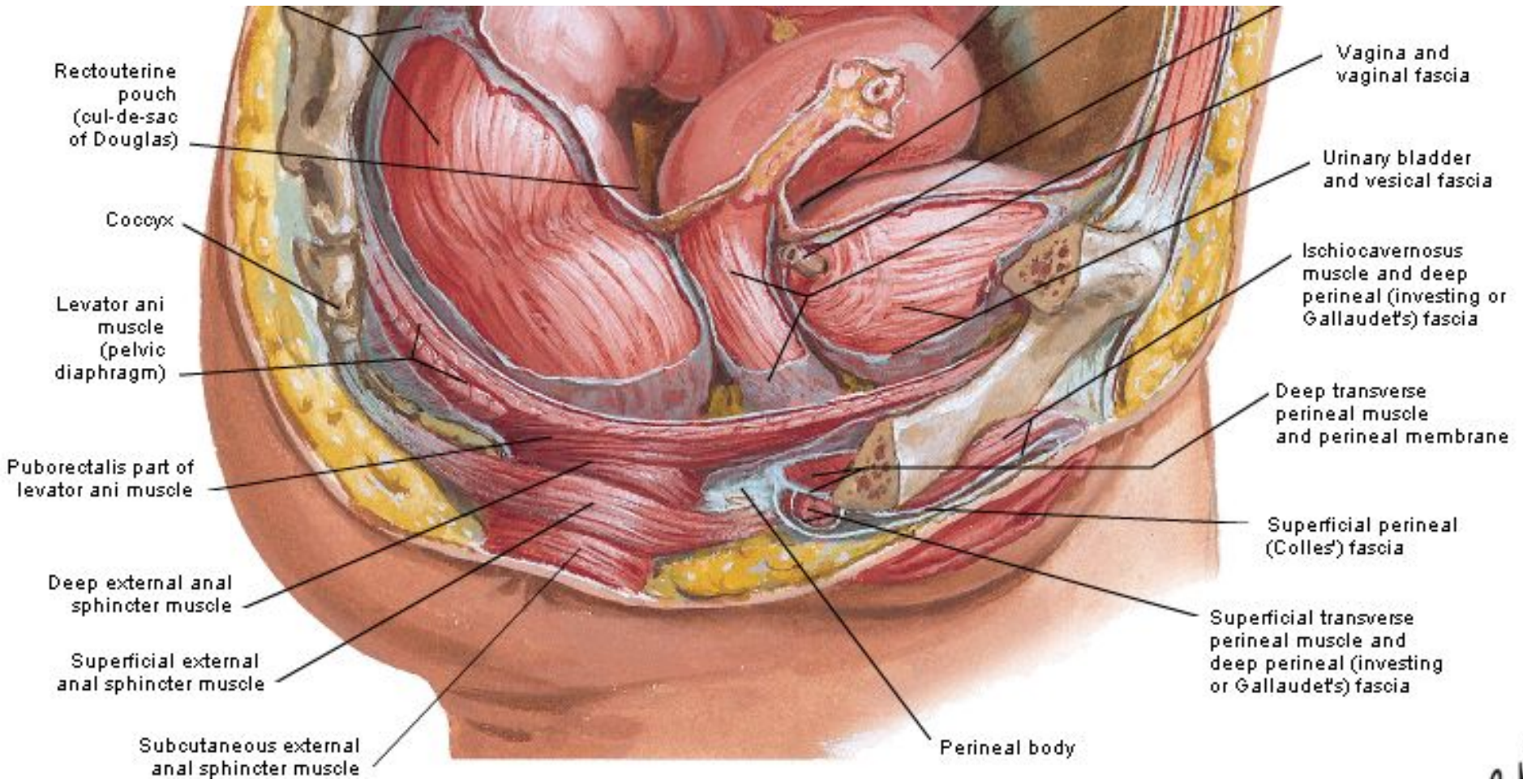
Retrocession

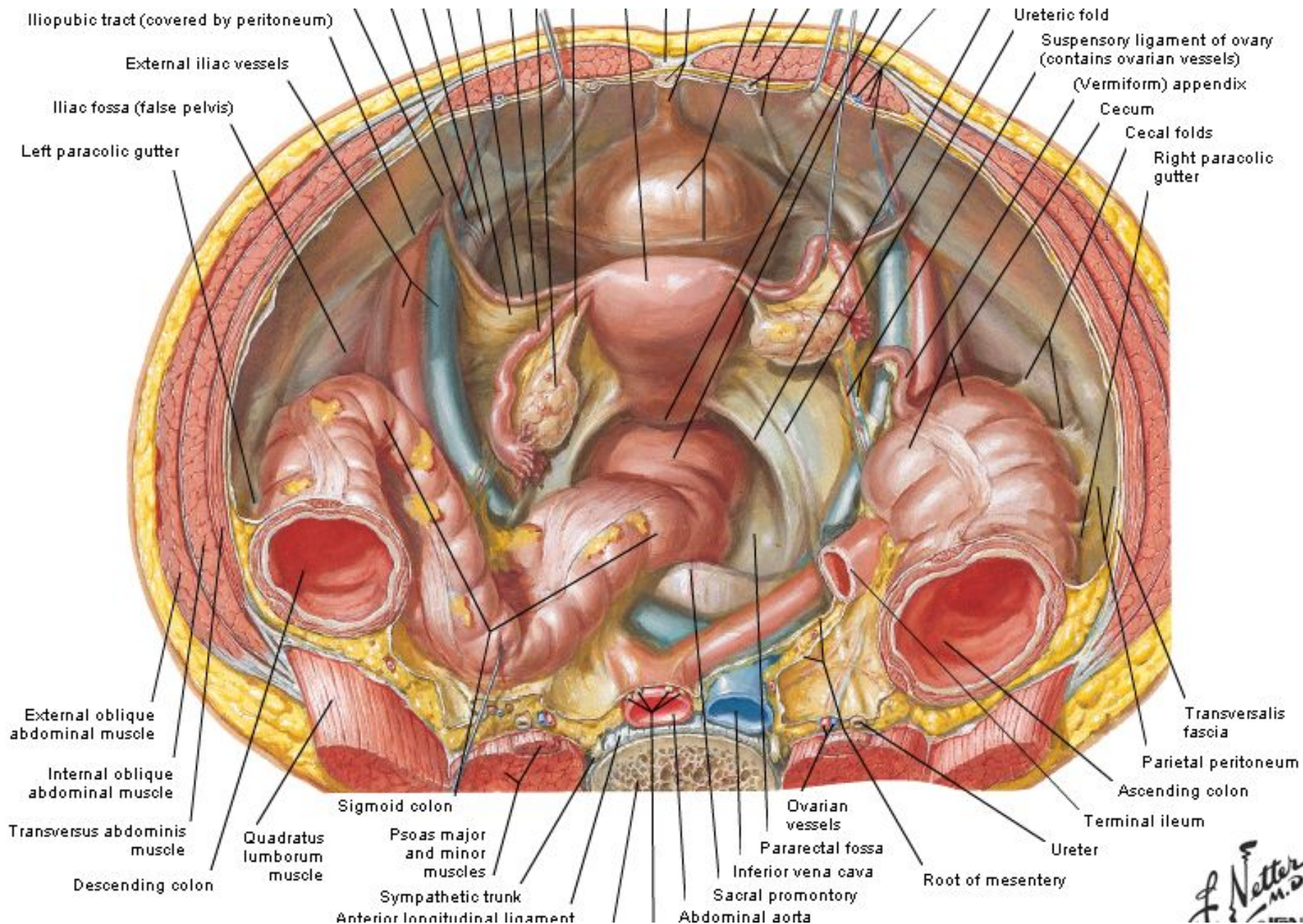


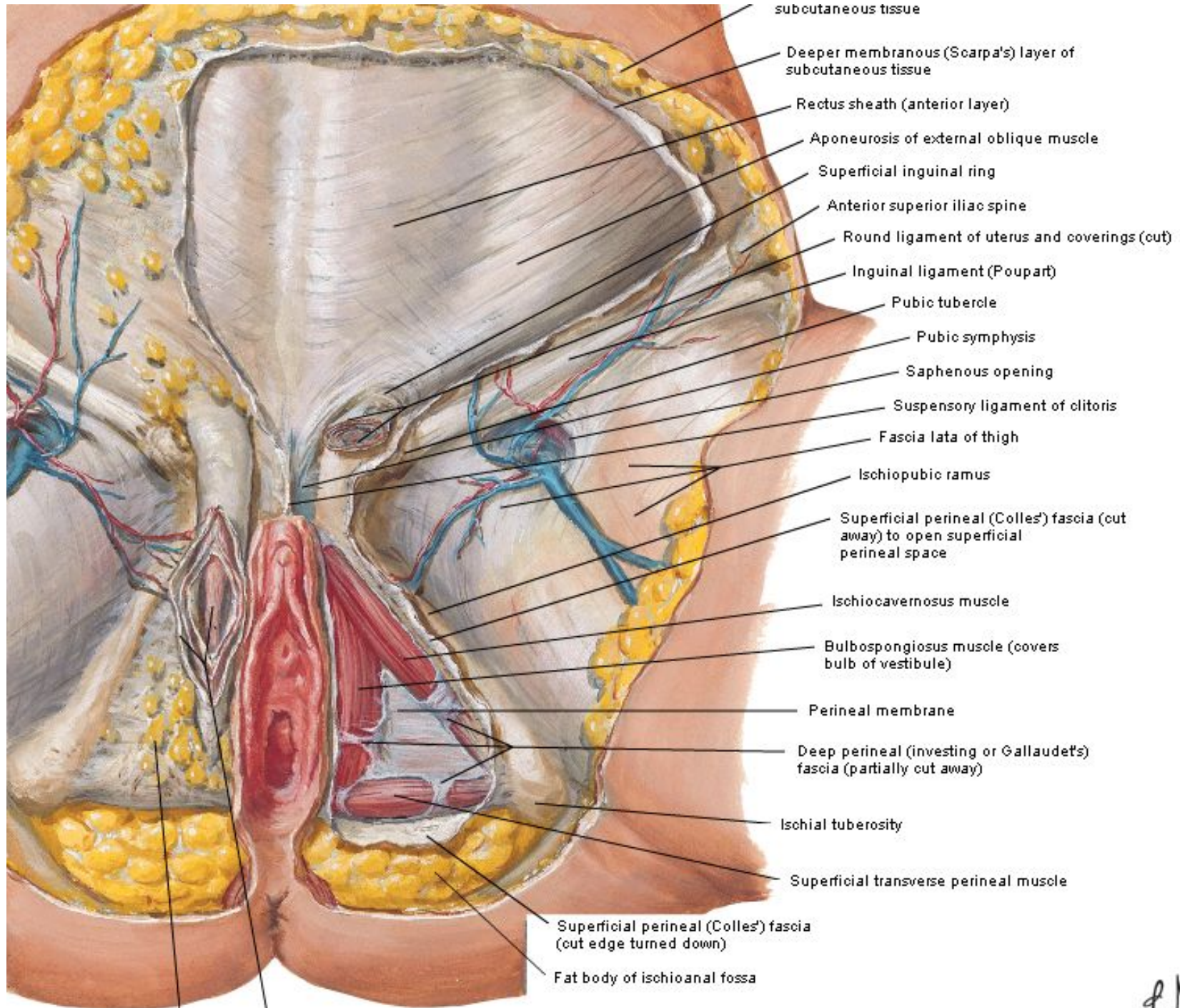
Anteversion  
(normal and severe)







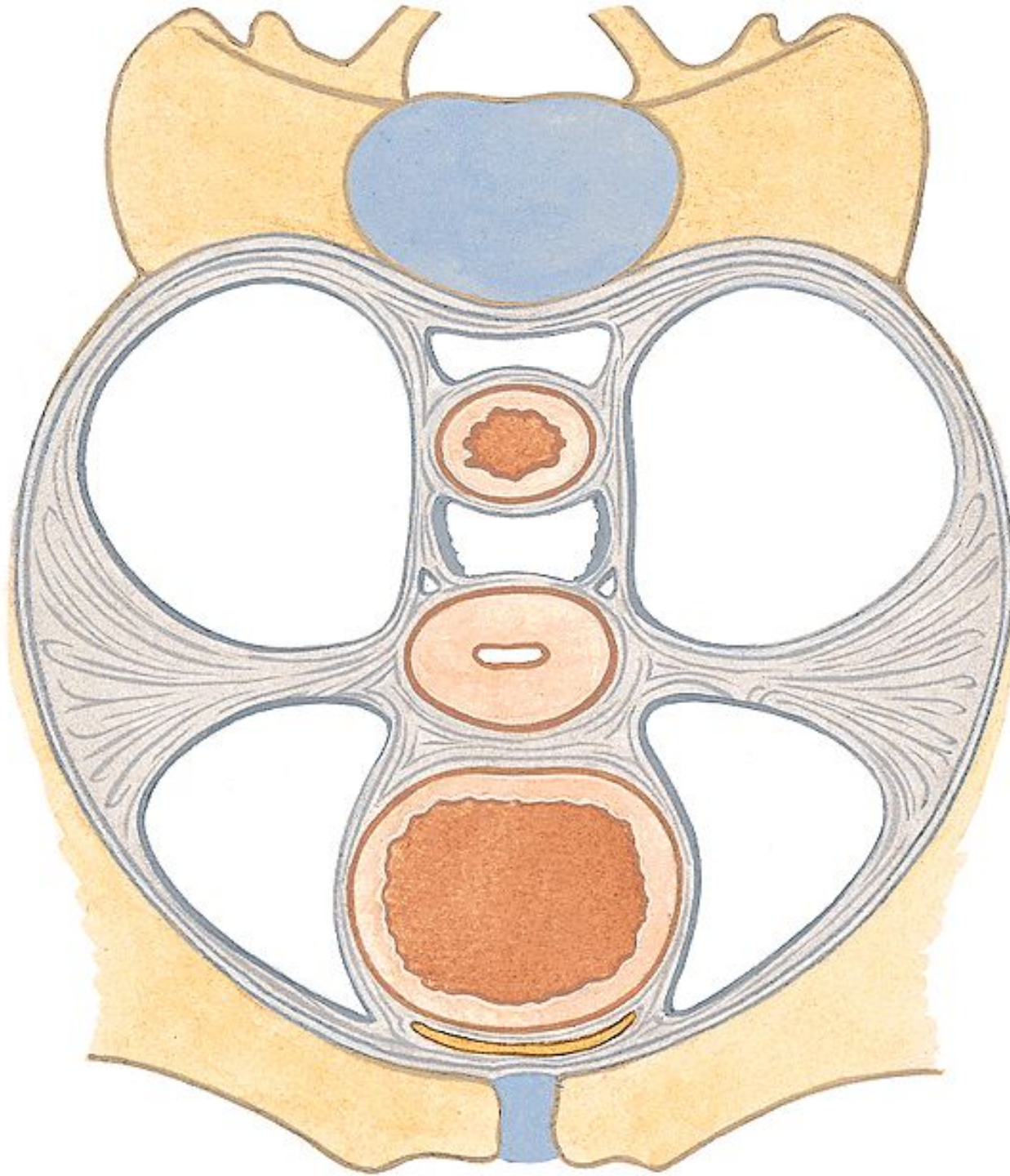




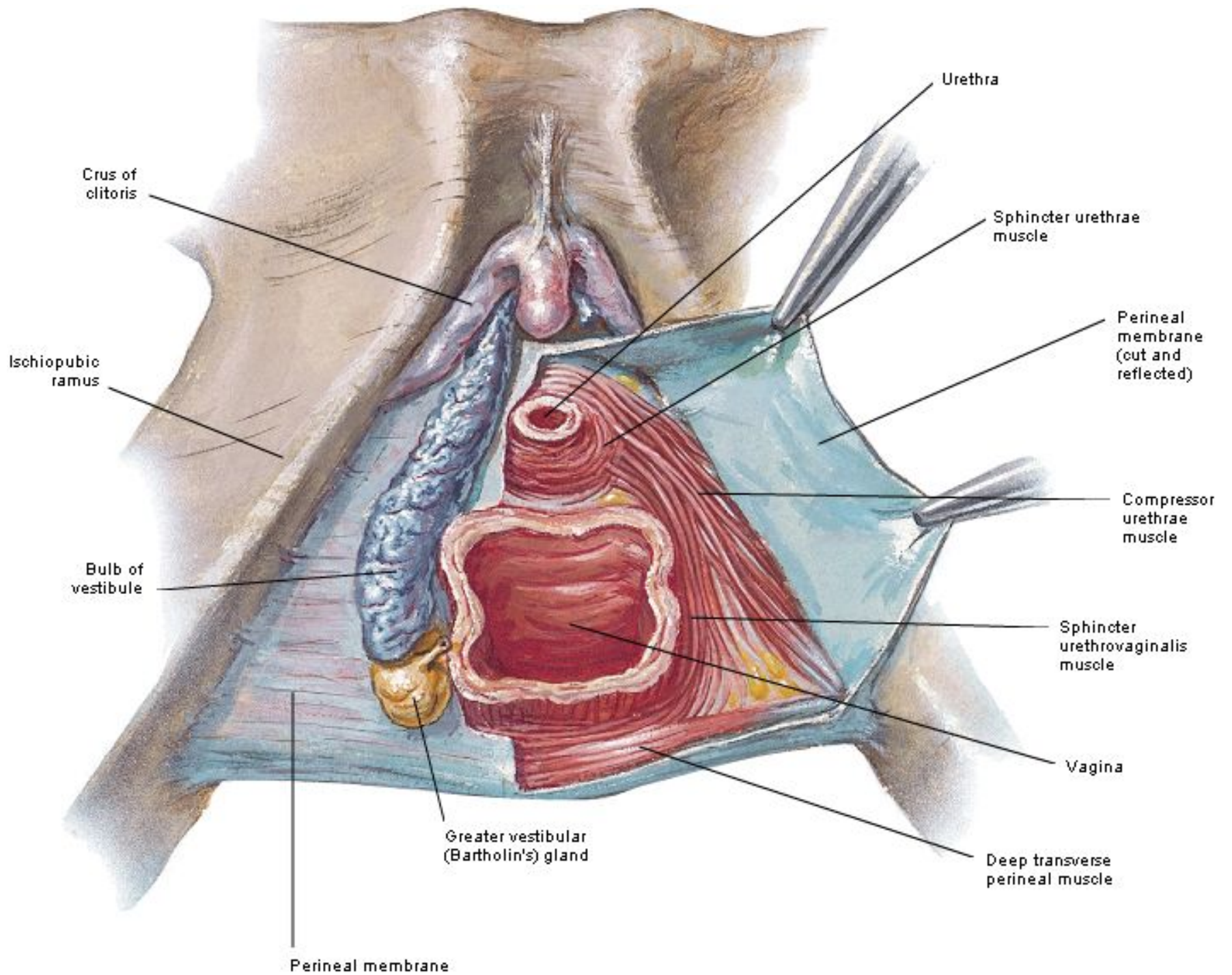
Superficial perineal

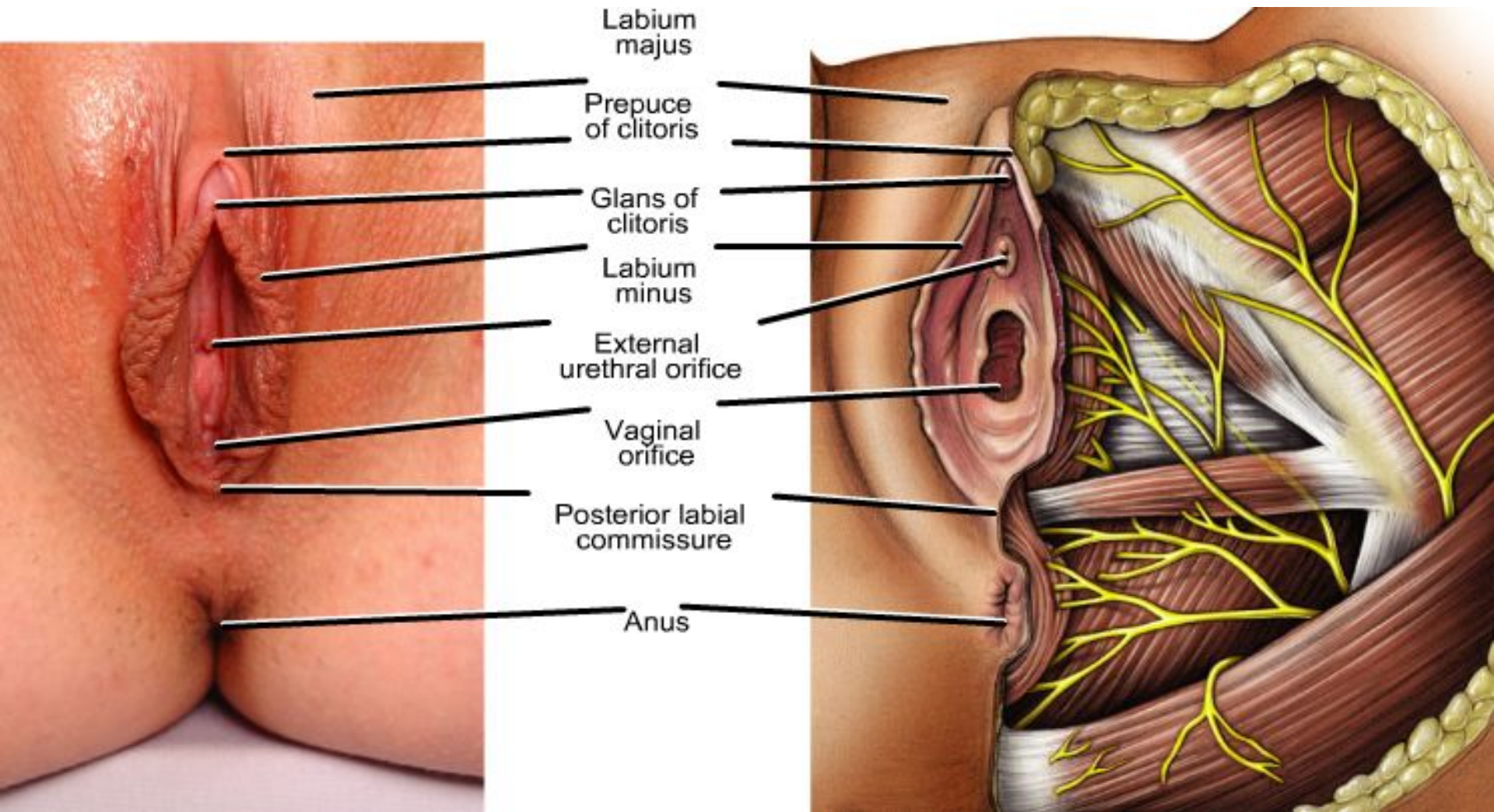
Round ligament of uterus and coverings

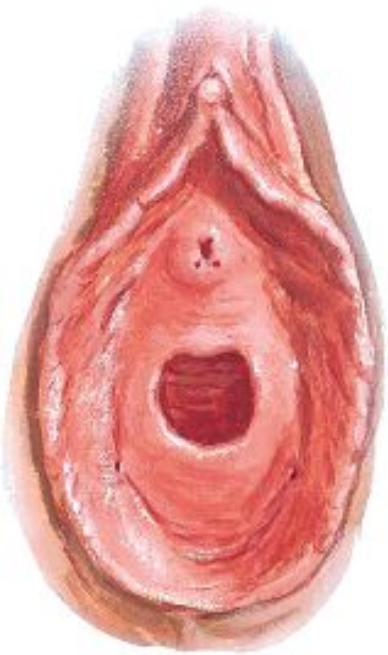
*[Handwritten signature]*



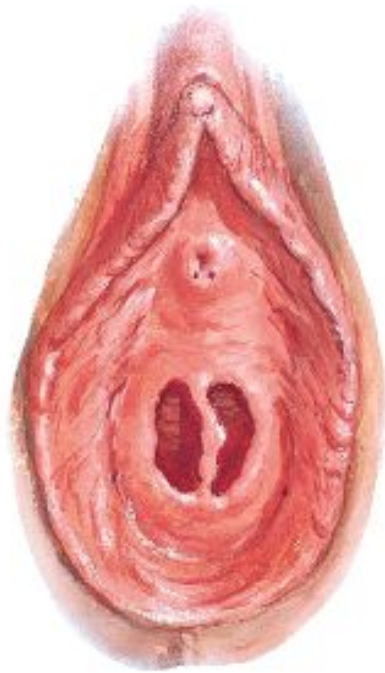
Cardinal ligament,  
 Parametrium\*  
 Cervix uteri  
 Lig. pubovesicale  
 Pararectal space,  
 Paraproctium\*  
 Paravesical space,  
 Paracystium\*  
 Petropubical space (= spatium prevesical = RETZIUS's space)\*  
 Plica recto-uterina (Plica sacrorectalis)  
 Rectal fascia\*  
 Recto-uterine pouch (= DOUGLAS'S space)\*  
 Rectum  
 Retrorectal space\*  
 Sacro-uterine ligament\*  
 Vesical fascia\*  
 Vesica urinaria



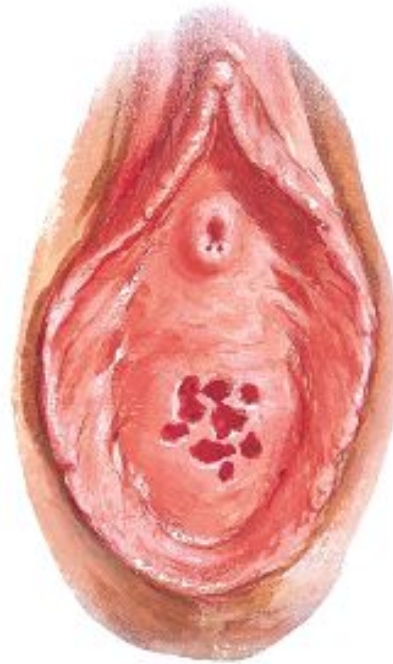




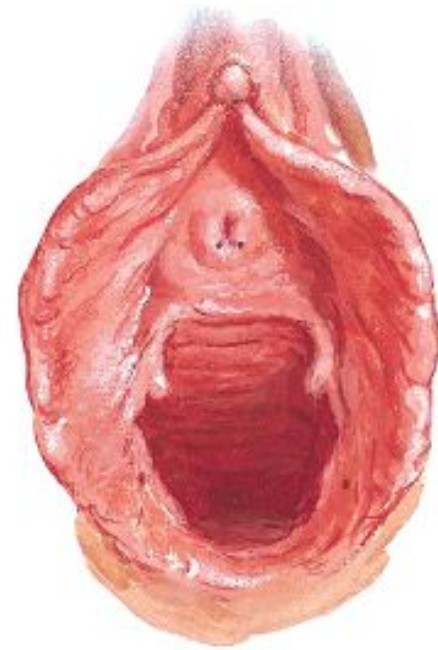
Anular hymen



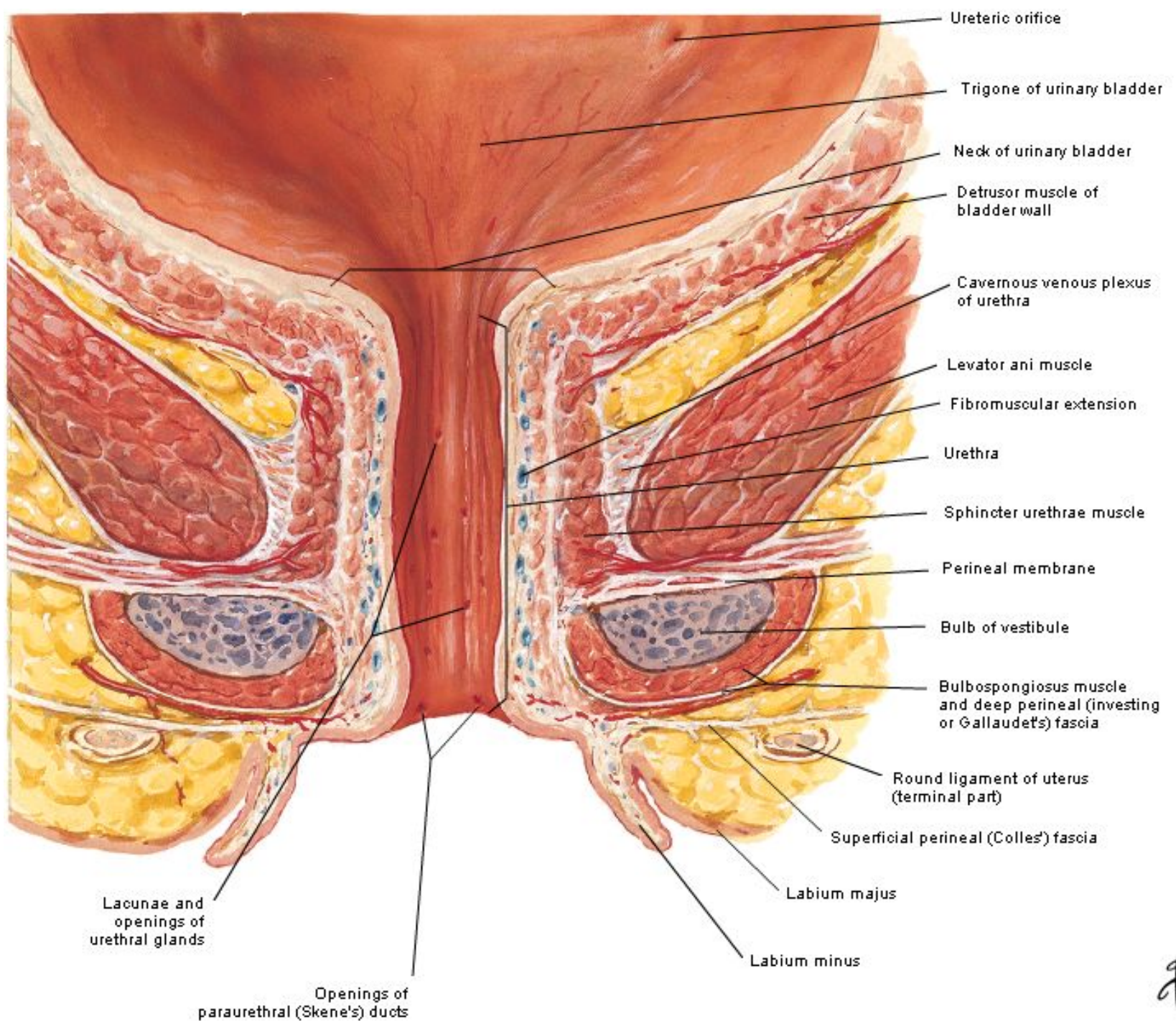
Septate hymen



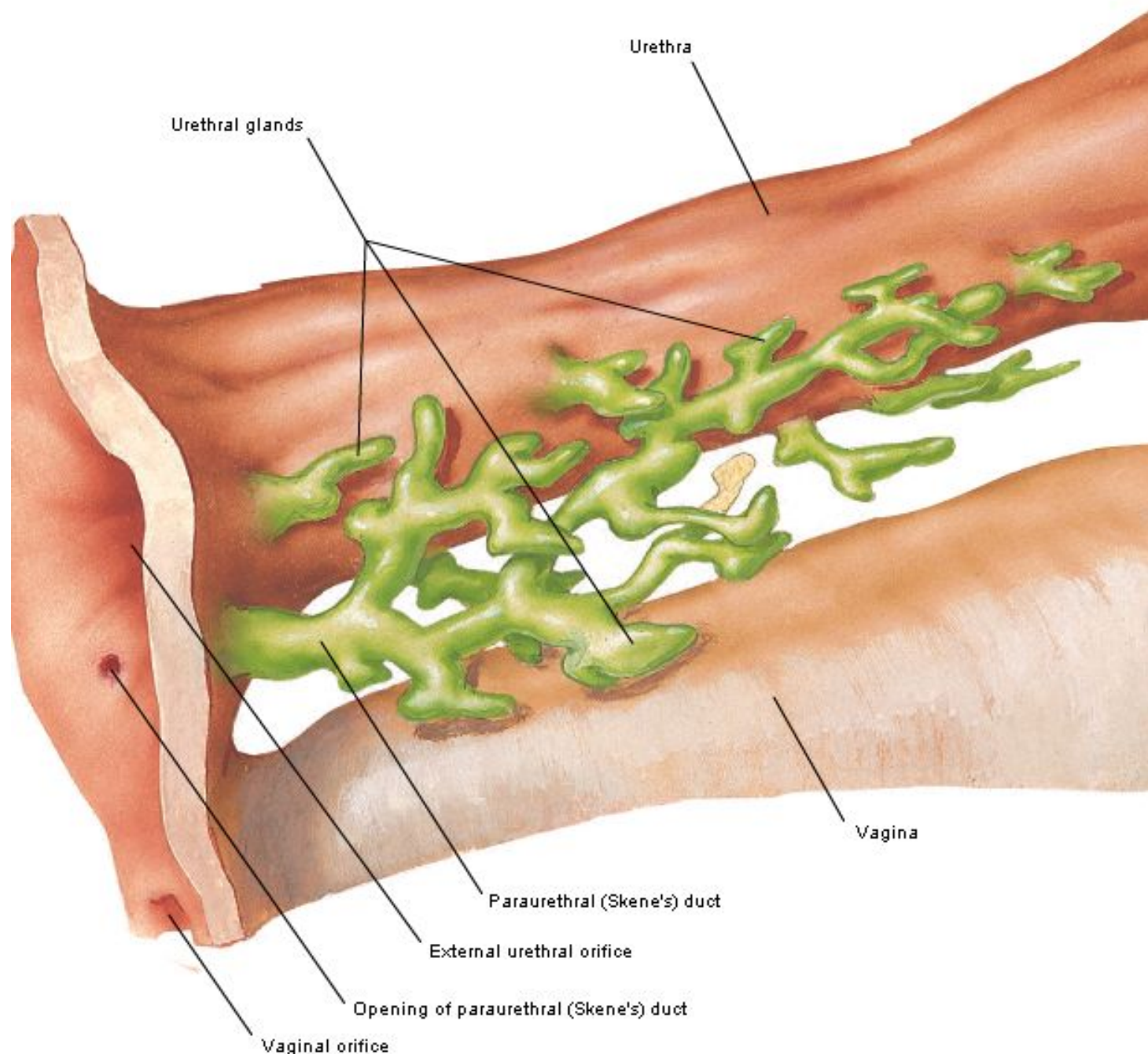
Cribriform hymen



Parous introitus







Urethra

Urethral glands

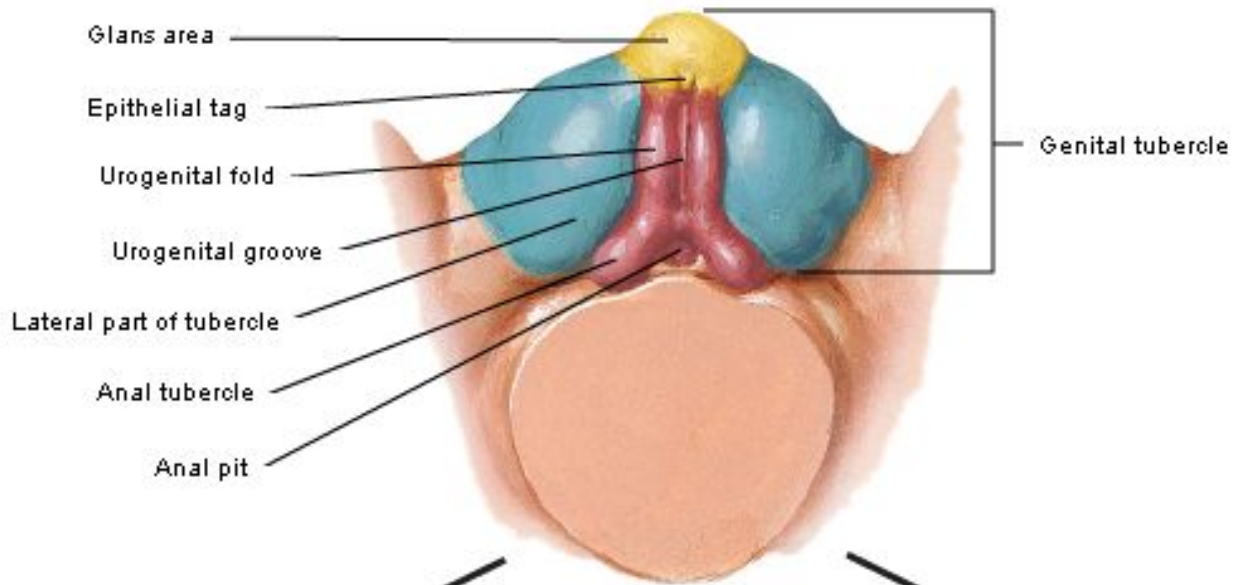
Vagina

Paraurethral (Skene's) duct

External urethral orifice

Opening of paraurethral (Skene's) duct

Vaginal orifice

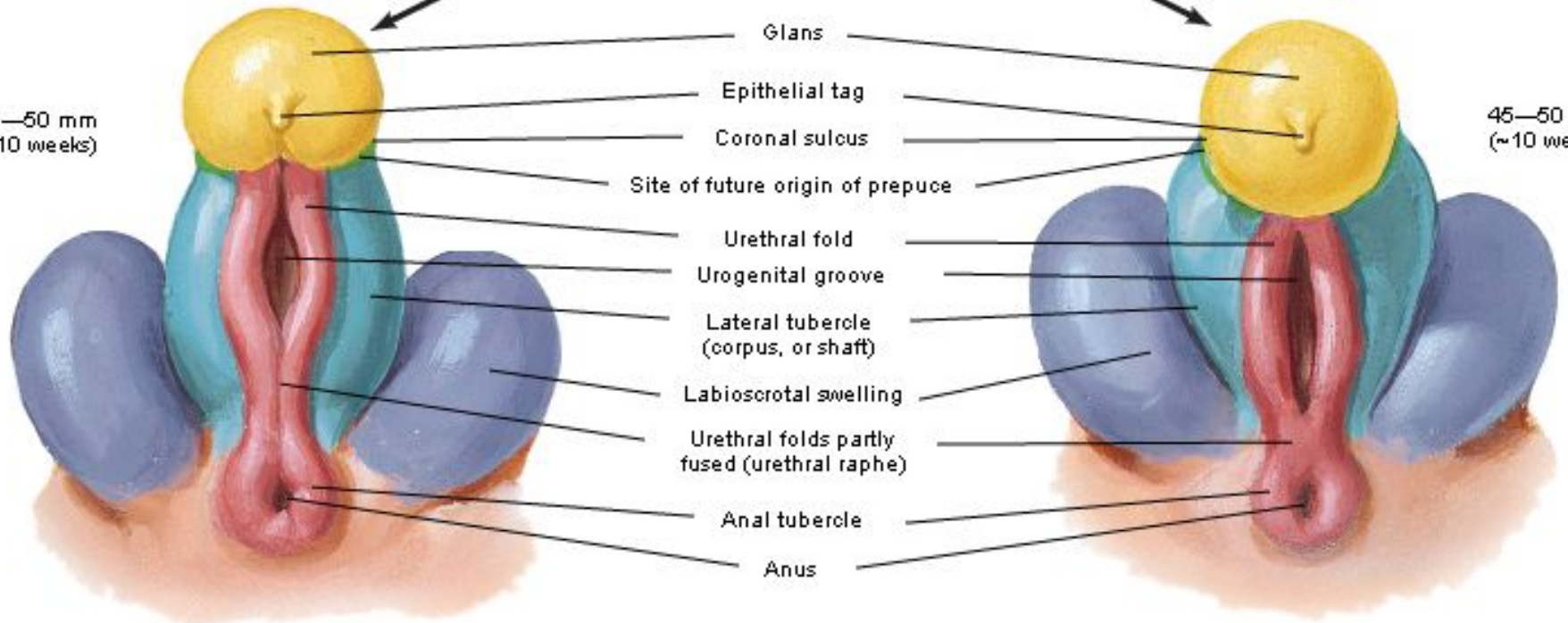


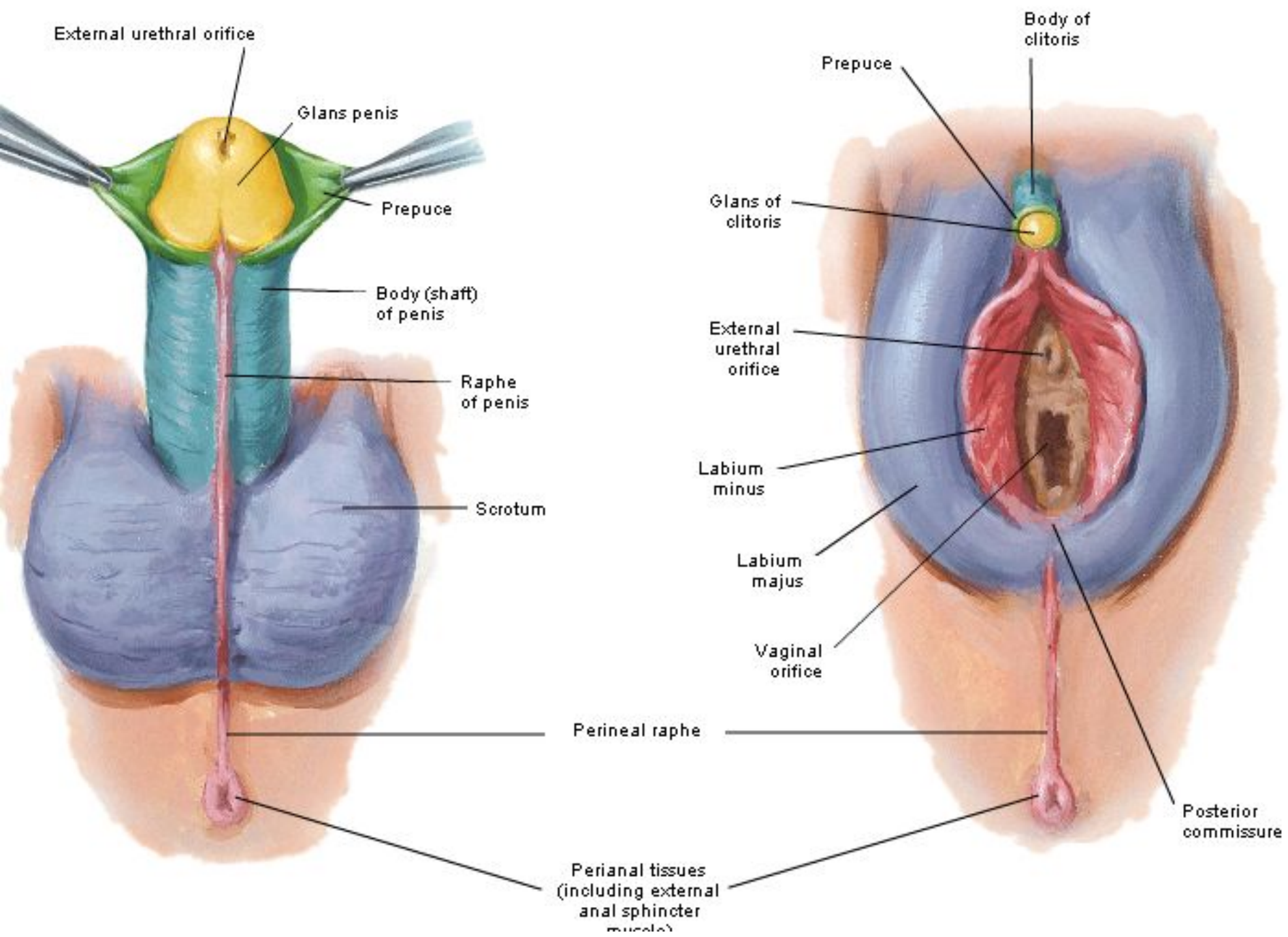
Male

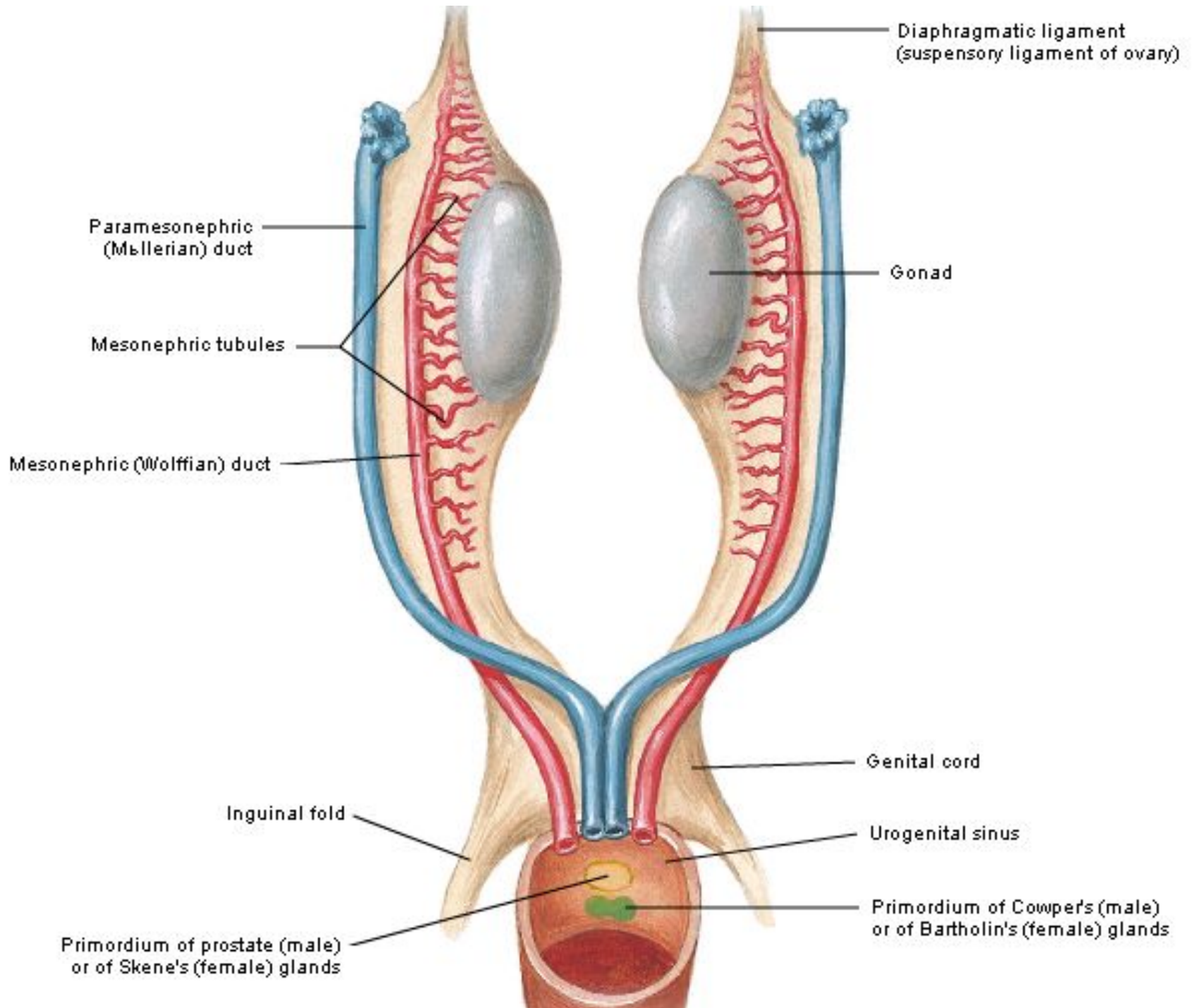
Female

45—50 mm  
(~10 weeks)

45—50 mm  
(~10 weeks)

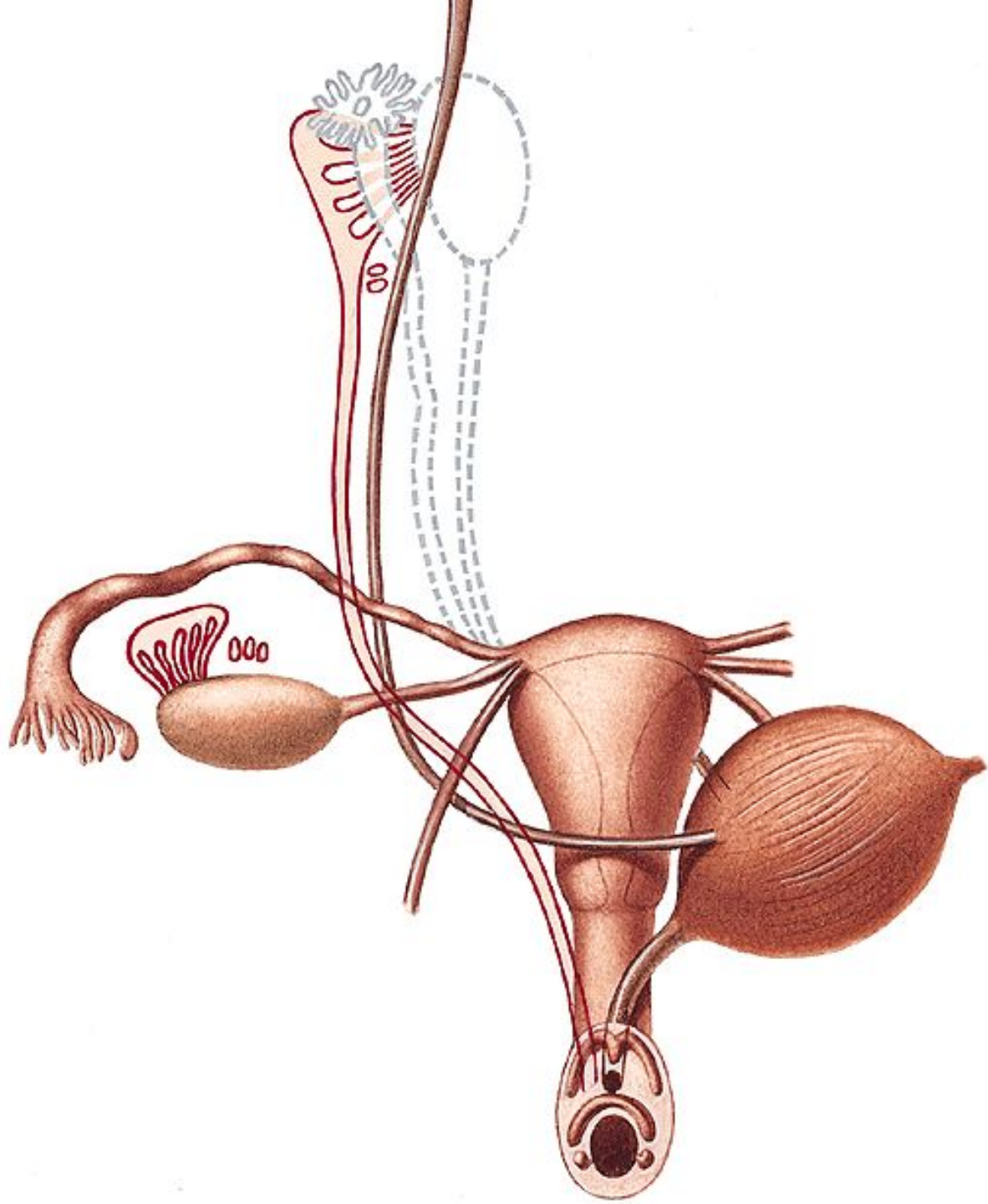


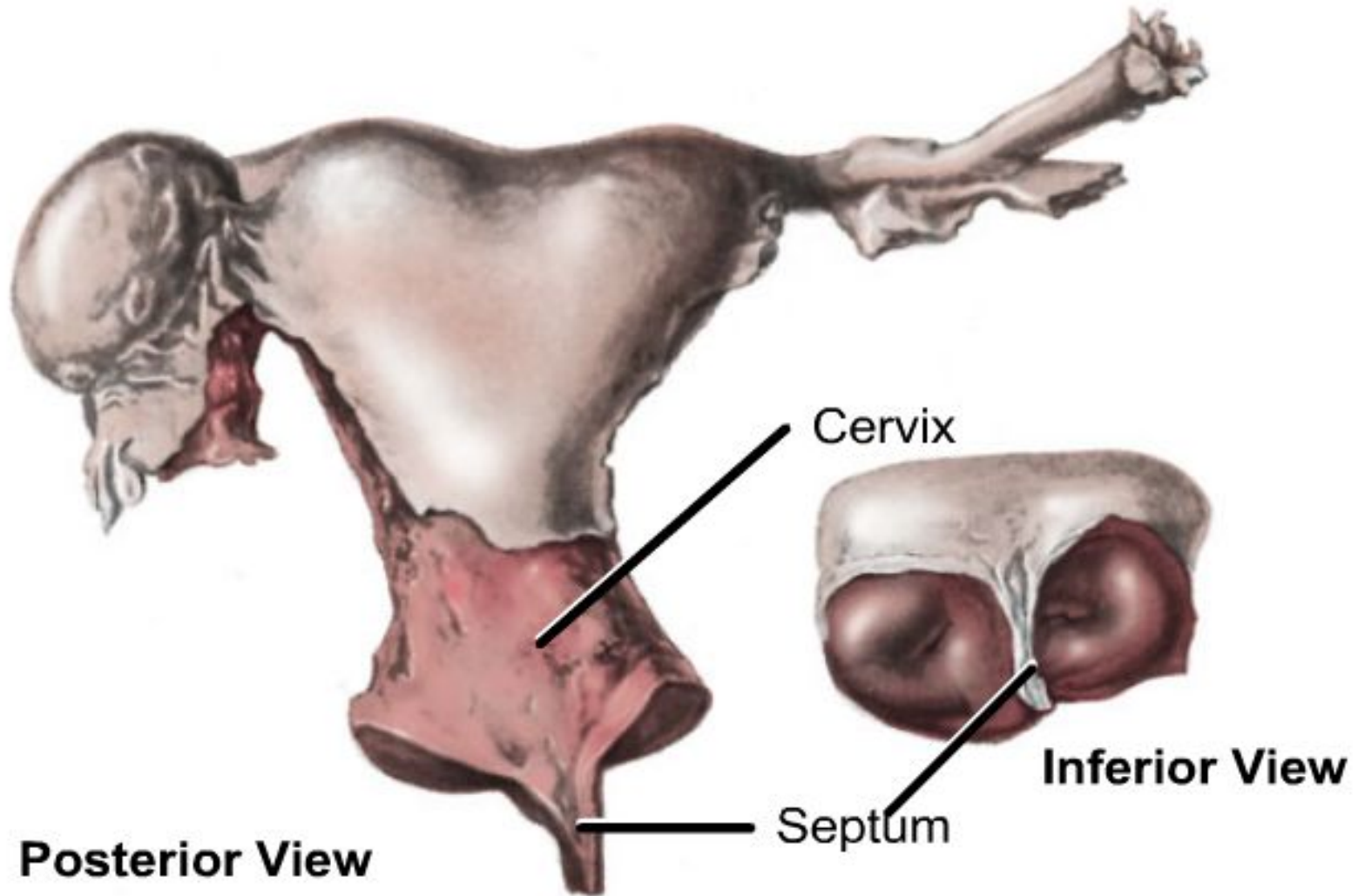




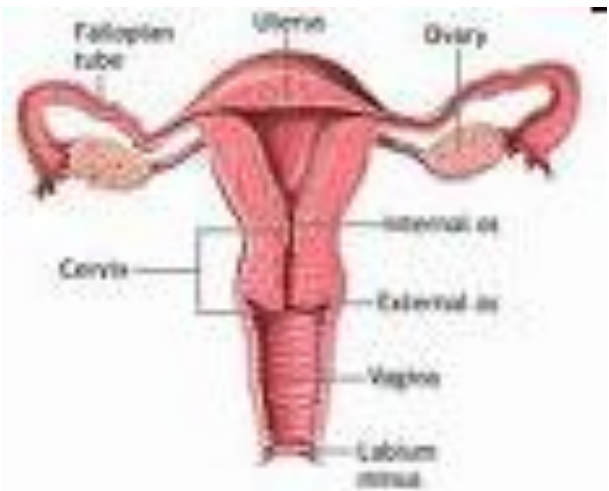
- 
- Seminal vesicle  
 Ductus deferens  
 Prostatic utricle  
 Prostate  
 Opening of ejaculatory duct  
 Bulbourethral gland (Cowper)  
 Appendix of epididymis  
 Epididymis  
 Efferent ductules  
 Appendix of testis  
 Testis  
 Paradidymis  
 Gubernaculum

- 
- Uterine (Fallopian) tube  
 Broad ligament  
 Gartner's duct (cranial mesonephric duct)  
 Epouphoron (cranial mesonephric tubules)  
 Parouphoron (caudal mesonephric tubules)  
 Vesicular appendix  
 Suspensory ligament of ovary  
 Ligament of ovary  
 Ovary  
 Uterus  
 Round ligament of uterus  
 Vagina (upper 4/5)  
 Residua of caudal mesonephric duct  
 Vagina (lower 1/5)  
 Urethra  
 Paraurethral (Skene's) gland  
 Greater vestibular (Bartholin's) gland  
 Vestibule





Bipartite uterus. Note the absence of the fundus of the uterus and in its place a median depression, the remains of a median vaginal septum, and a cervix with two openings.





## Внутренние половые органы женщины в норме и при некоторых пороках развития матки и влагалища

а - норма (1 - влагалище, 2 - яичник, 3 - маточная труба, 4 - матка);

б - аплазия матки и влагалища (отсутствие матки и влагалища);

в — удвоение матки и влагалища;

г — двурогая матка с одной шейкой;

д - двурогая матка с двумя шейками;

е - двурогая матка с неодинаково развитыми рогами;

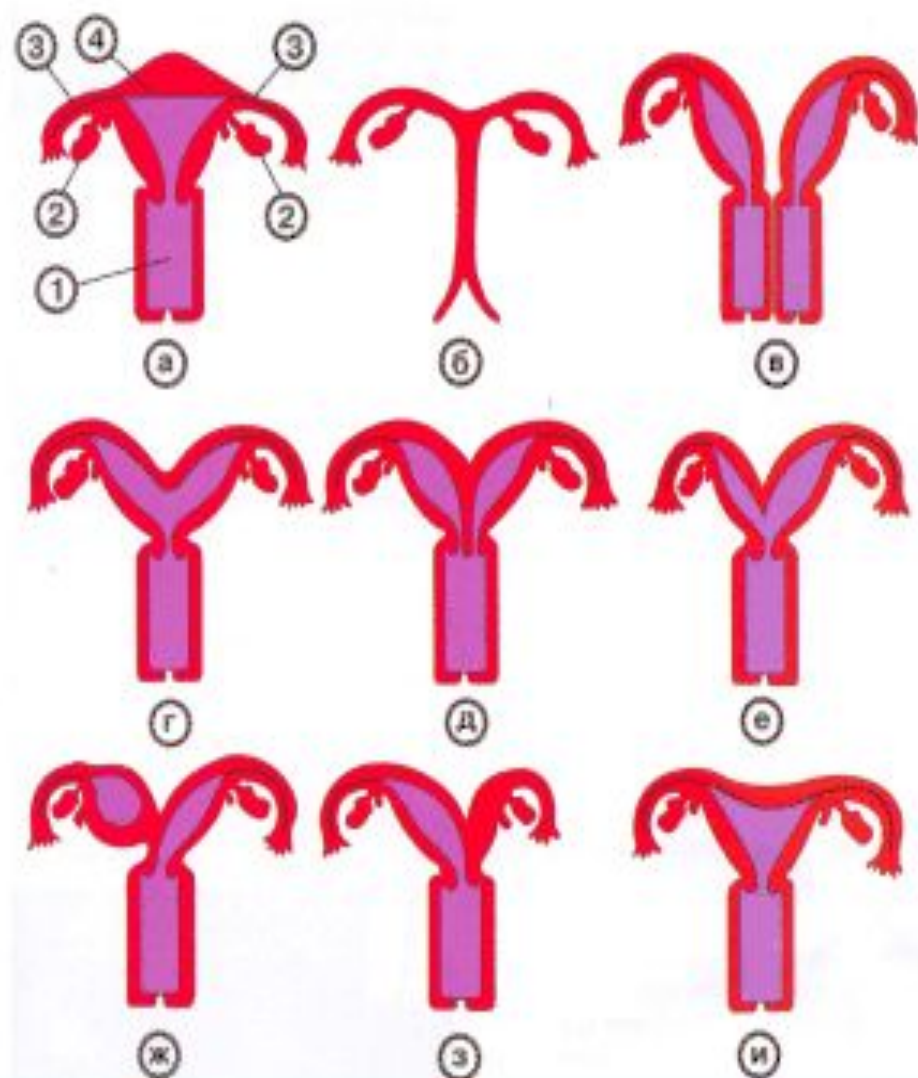
ж - двурогая матка с

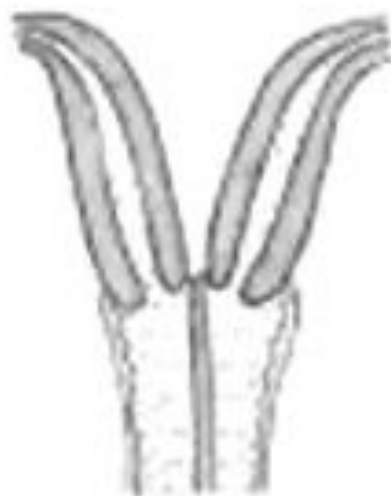
функционирующим замкнутым рогом;

з — двурогая матка

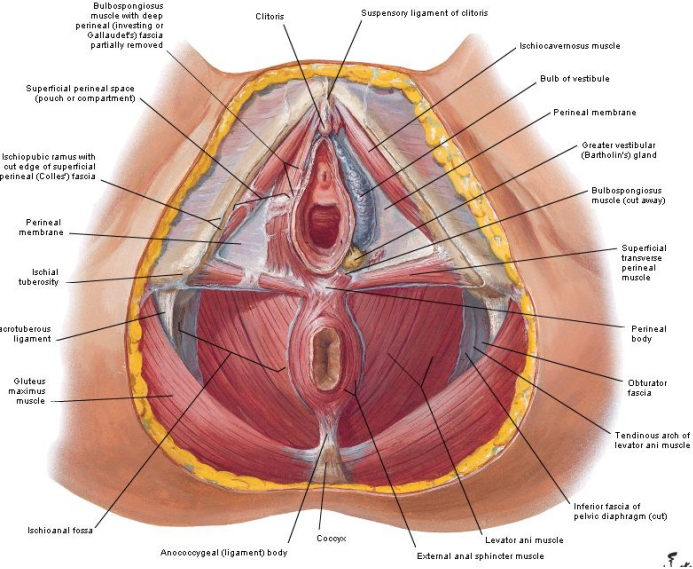
с атрезированным левым рогом;

и - седловидная матка.





# Perineum

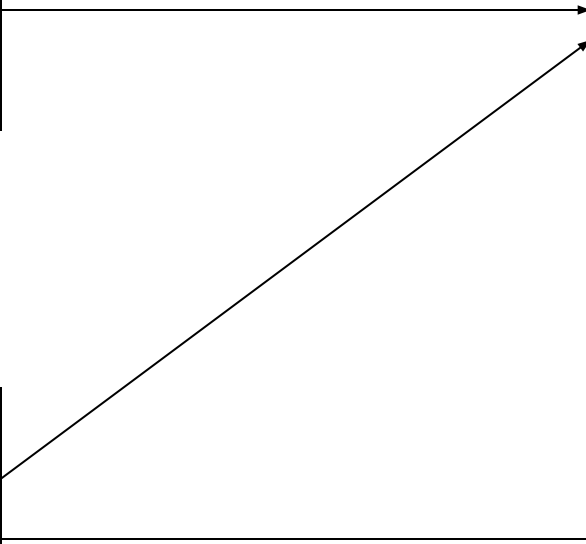


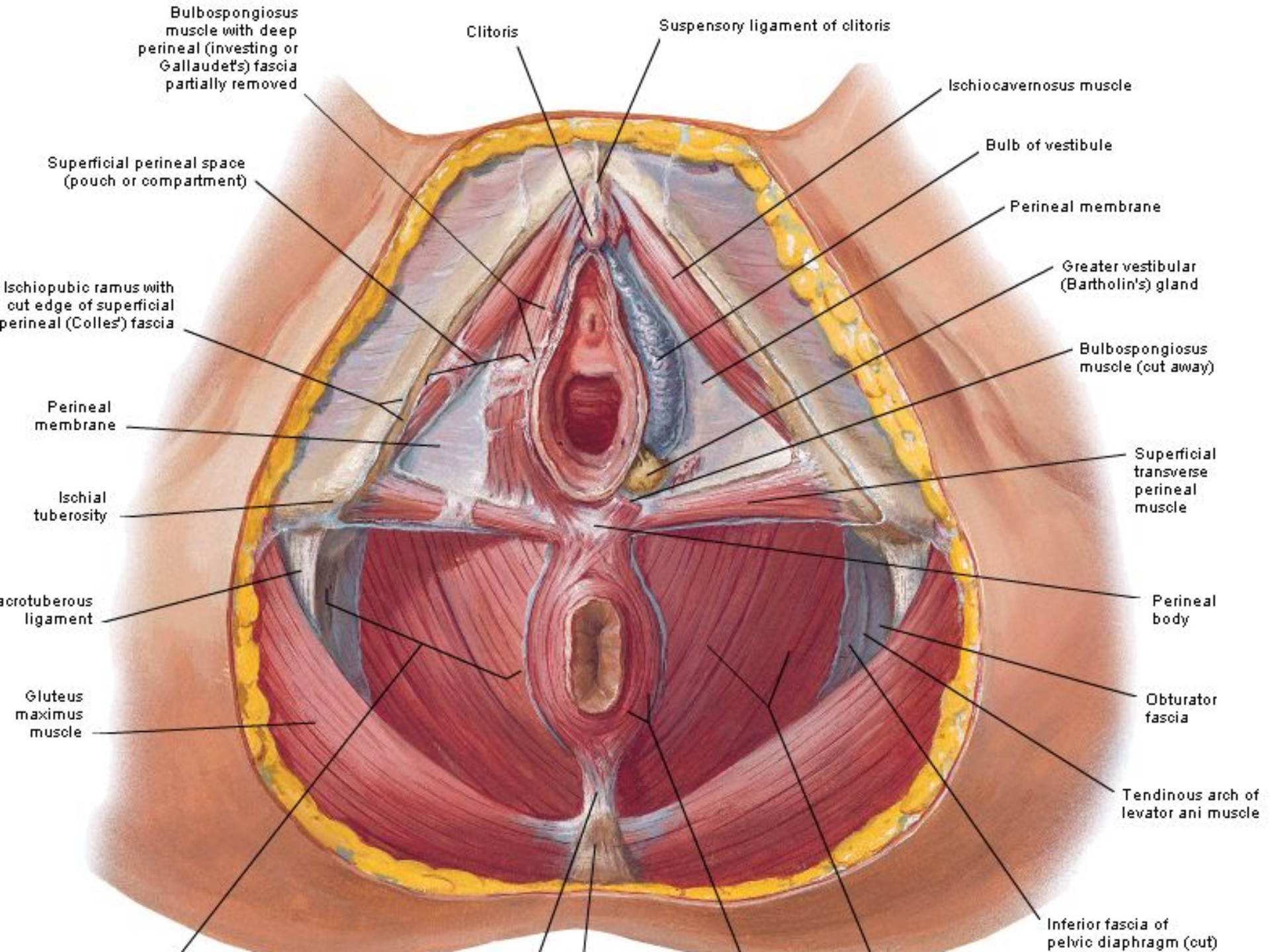
**Diafragma urogenitale**

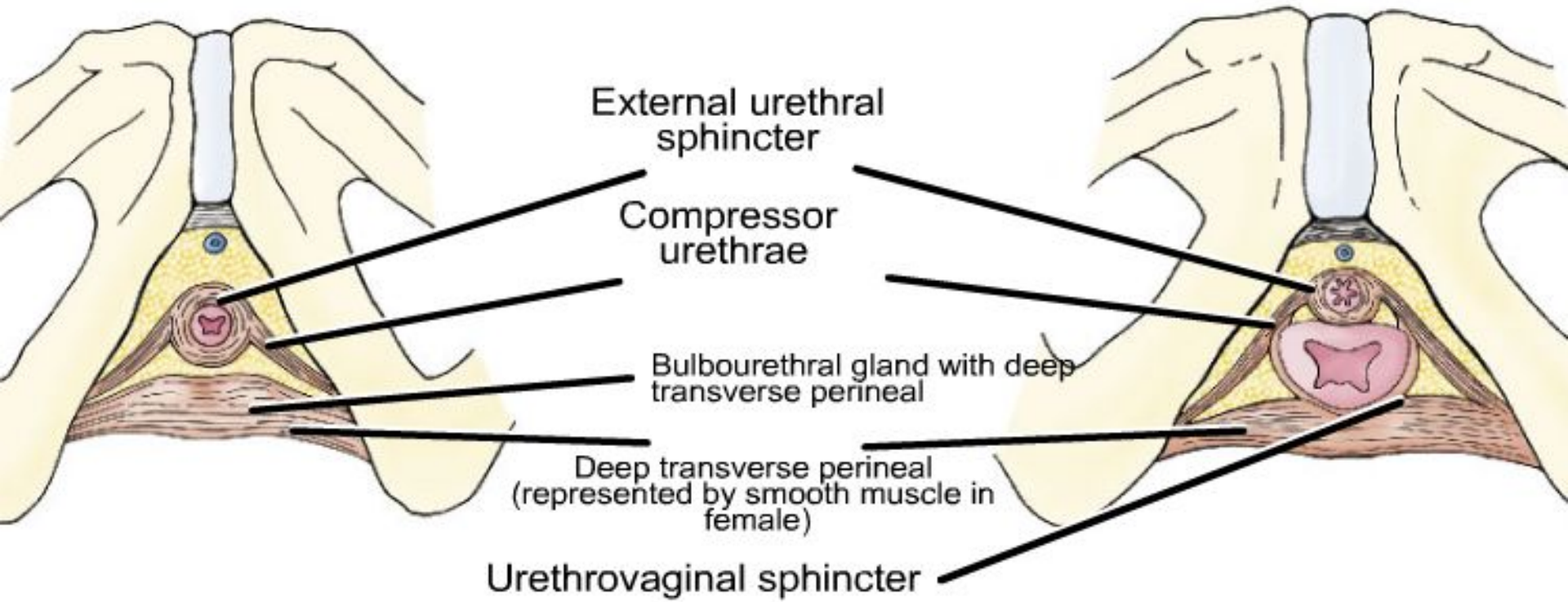
**Trigonum urogenitale**

**Diafragma pelvis**

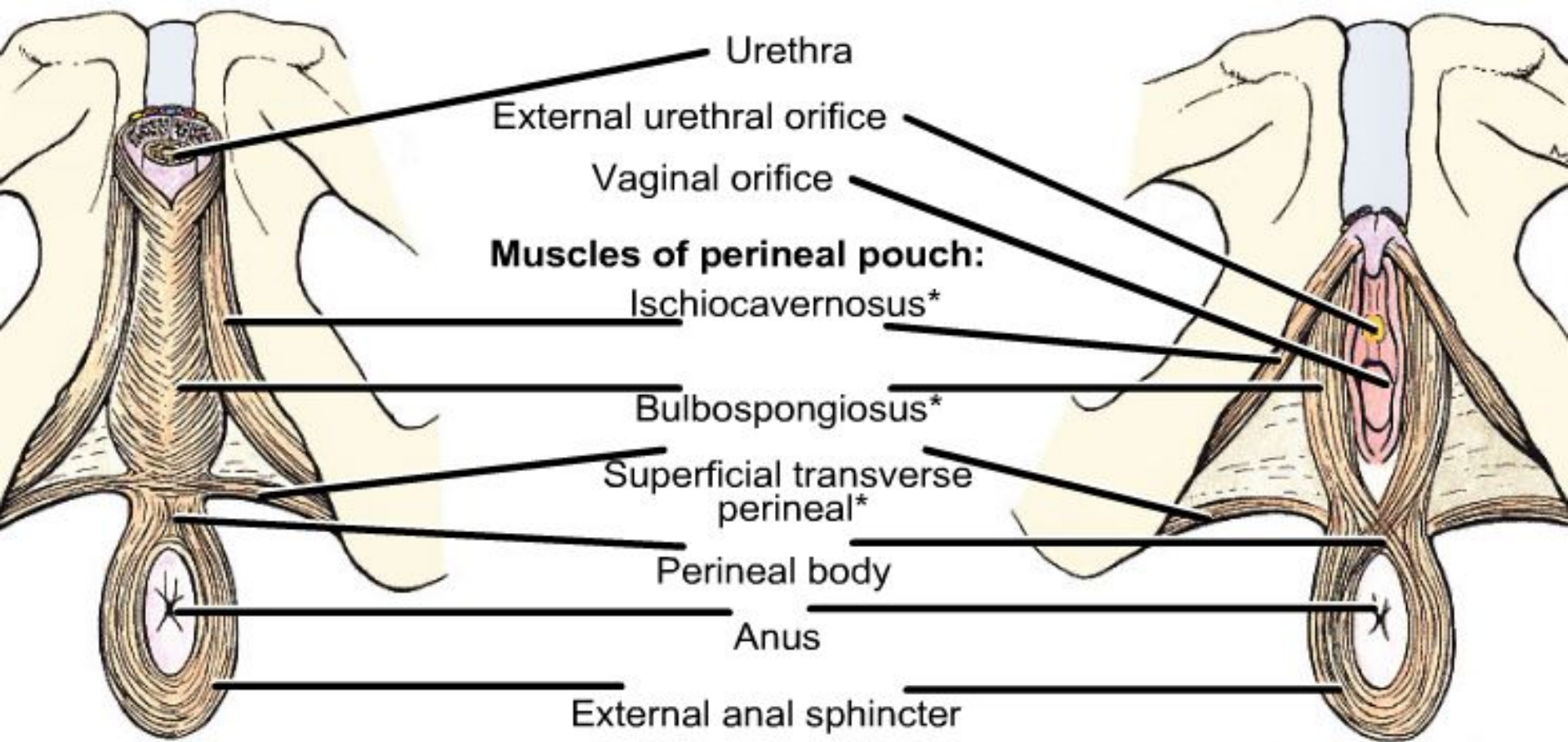
**Trigonum anale**







External urethral sphincter, urethrovaginal sphincter, and compressor urethrae. *Left*, male; *right* female.



Urethra

External urethral orifice

Vaginal orifice

**Muscles of perineal pouch:**

Ischiocavernosus\*

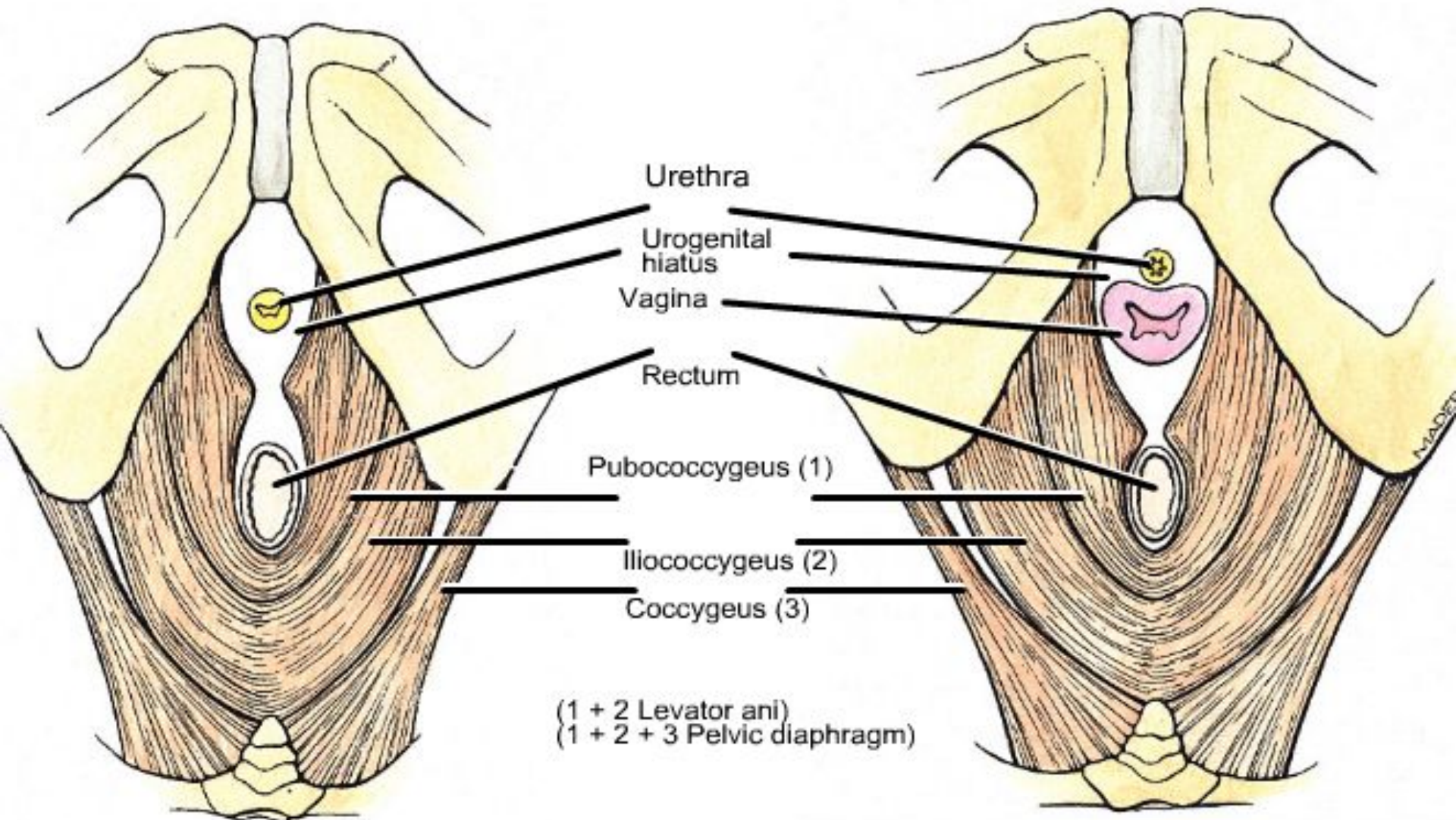
Bulbospongiosus\*

Superficial transverse perineal\*

Perineal body

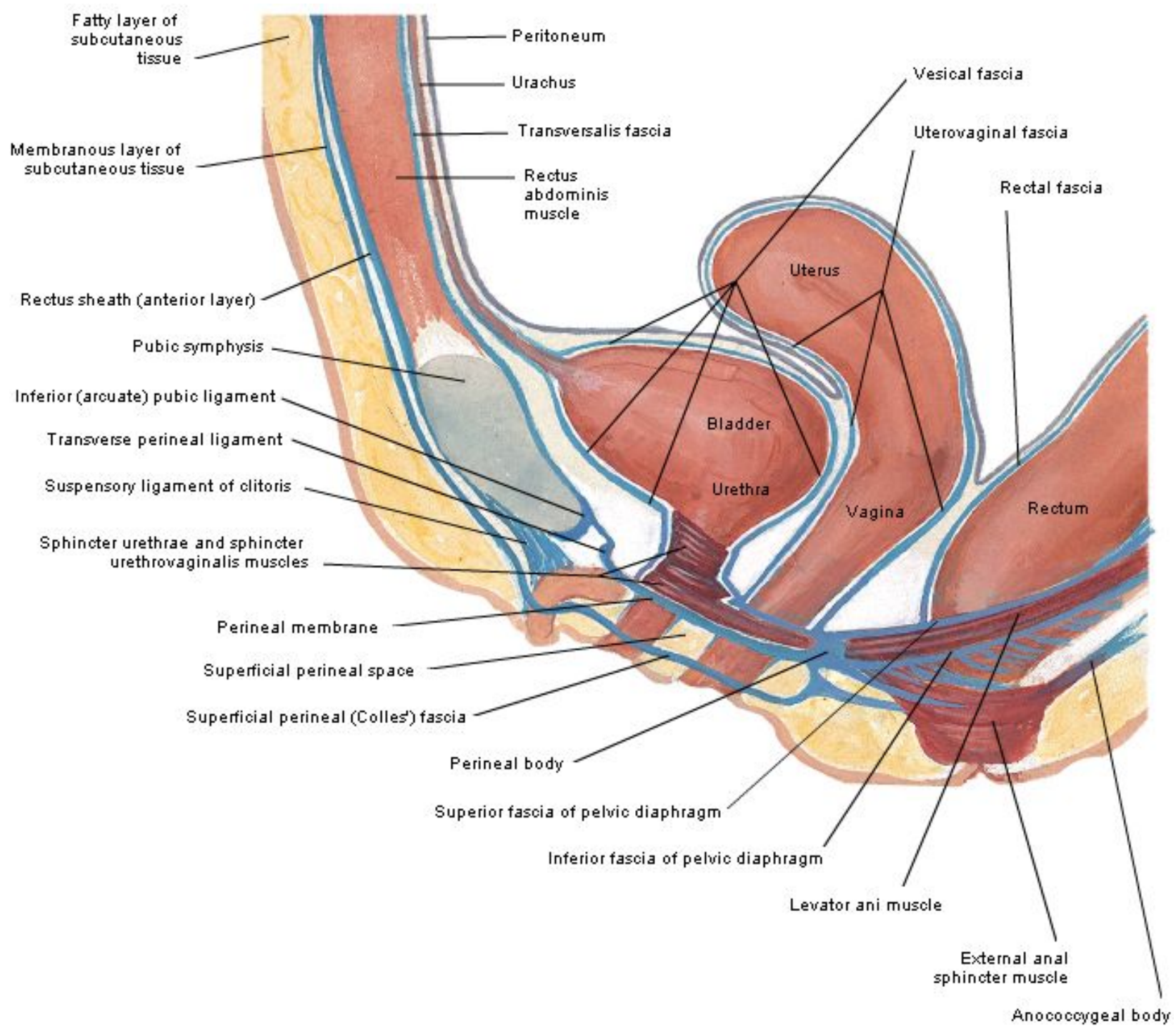
Anus

External anal sphincter

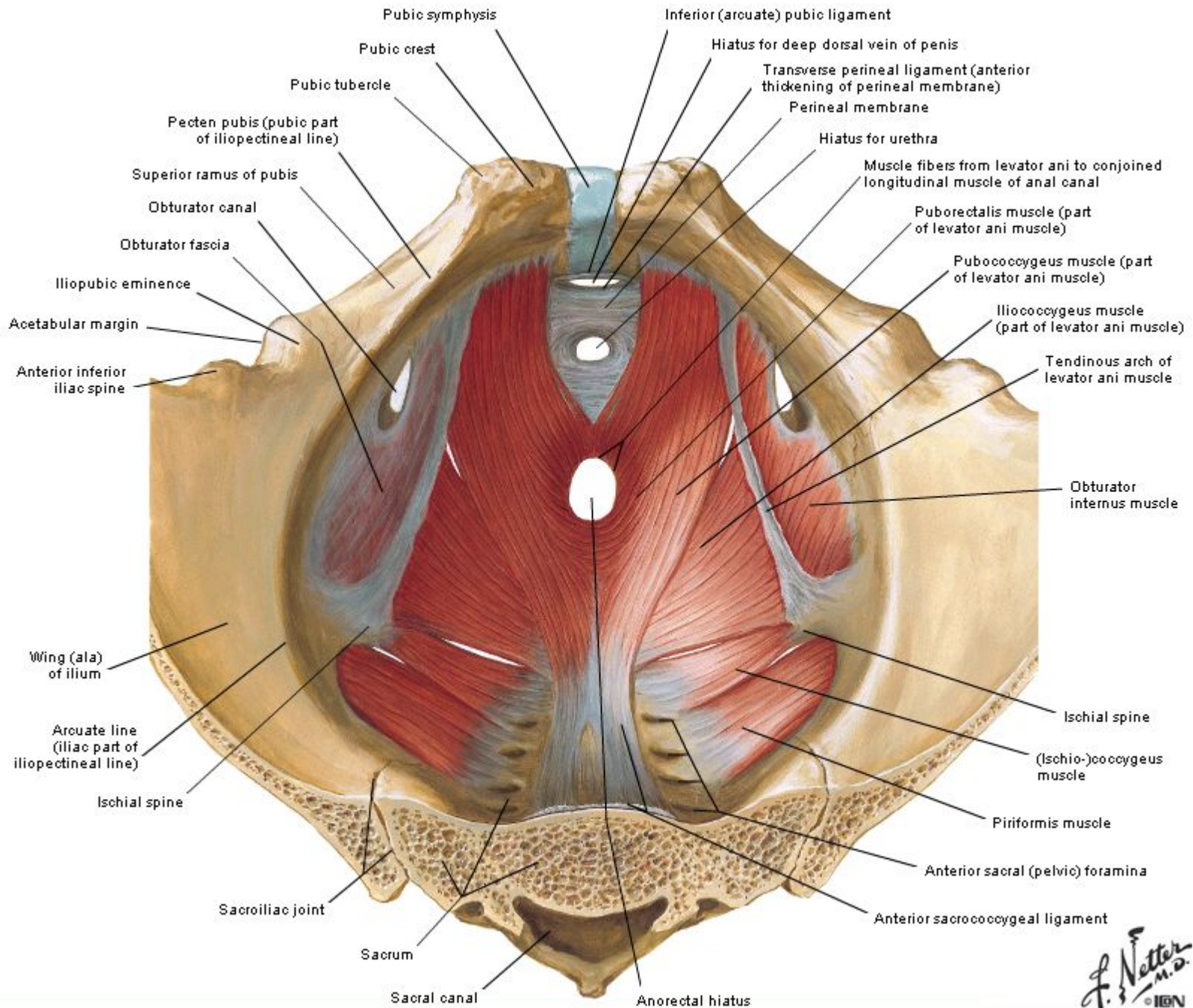


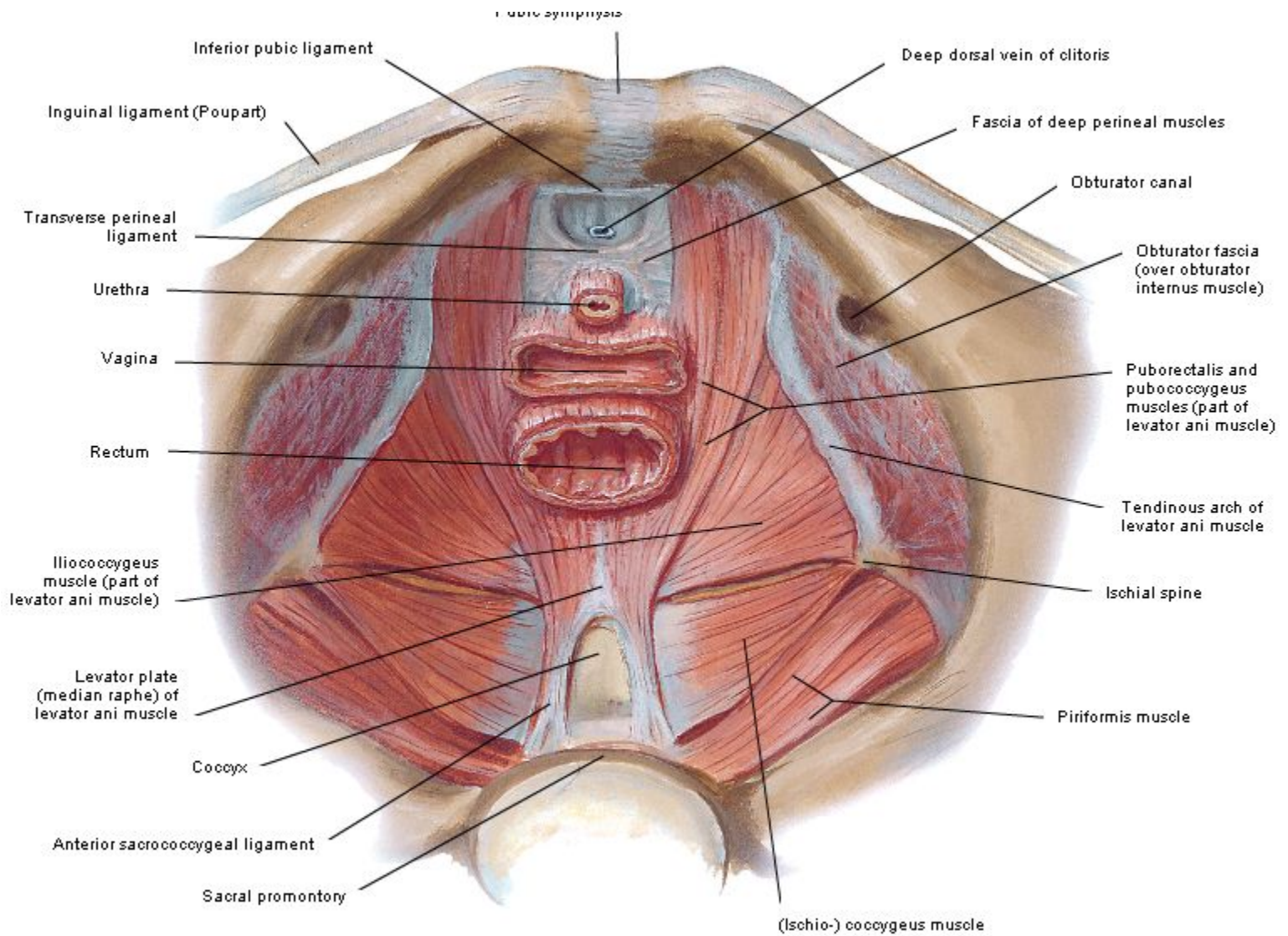
Male

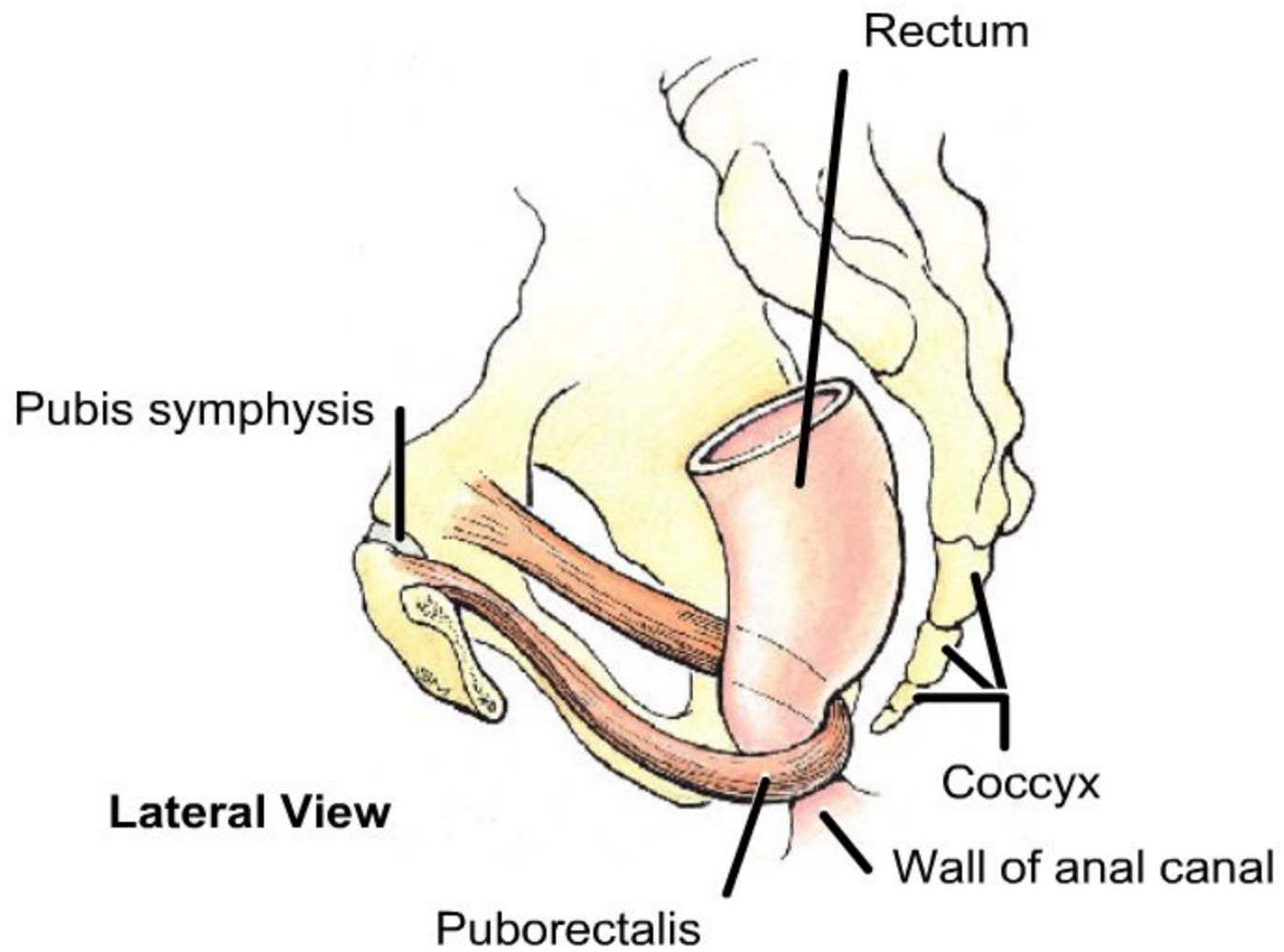
Female

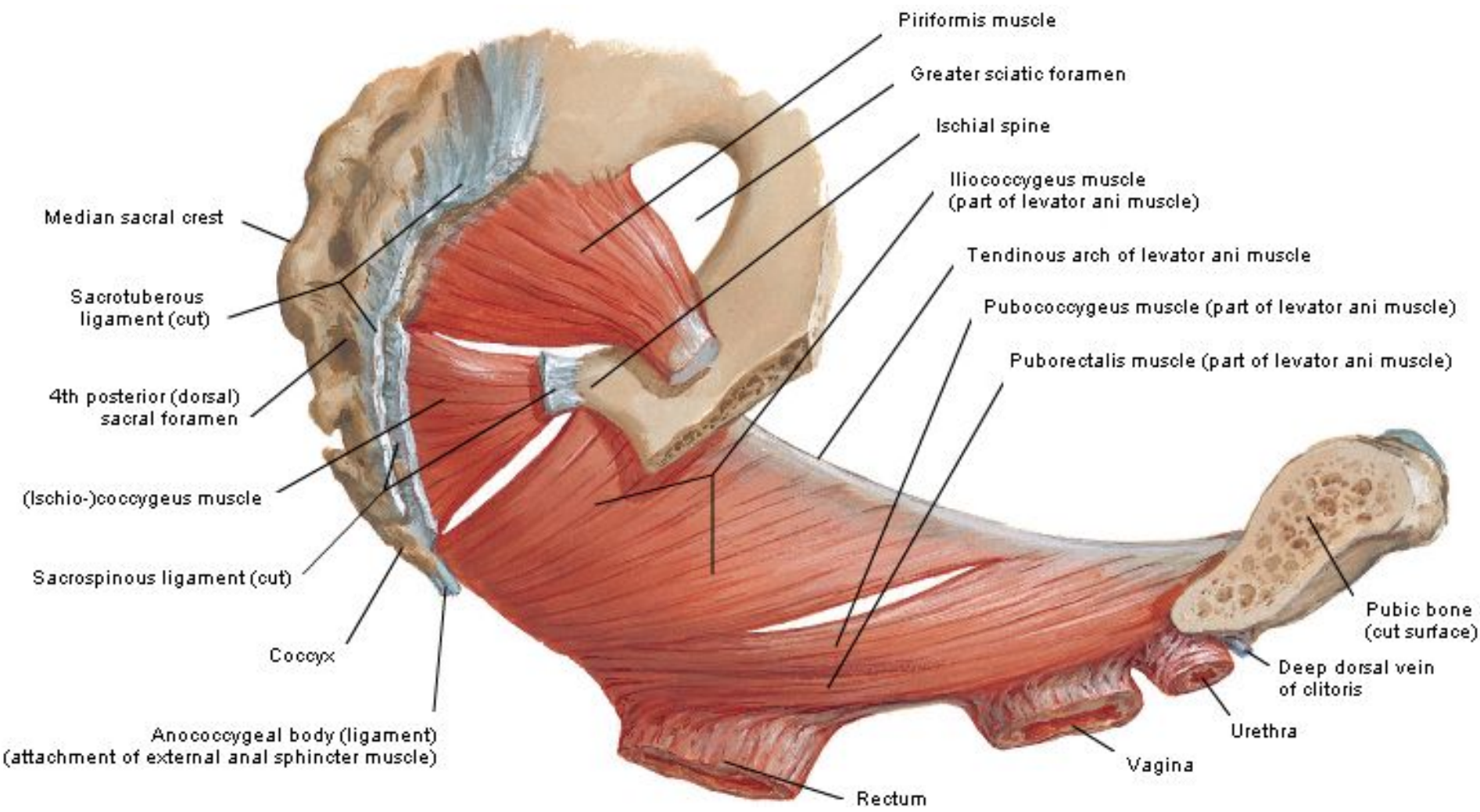


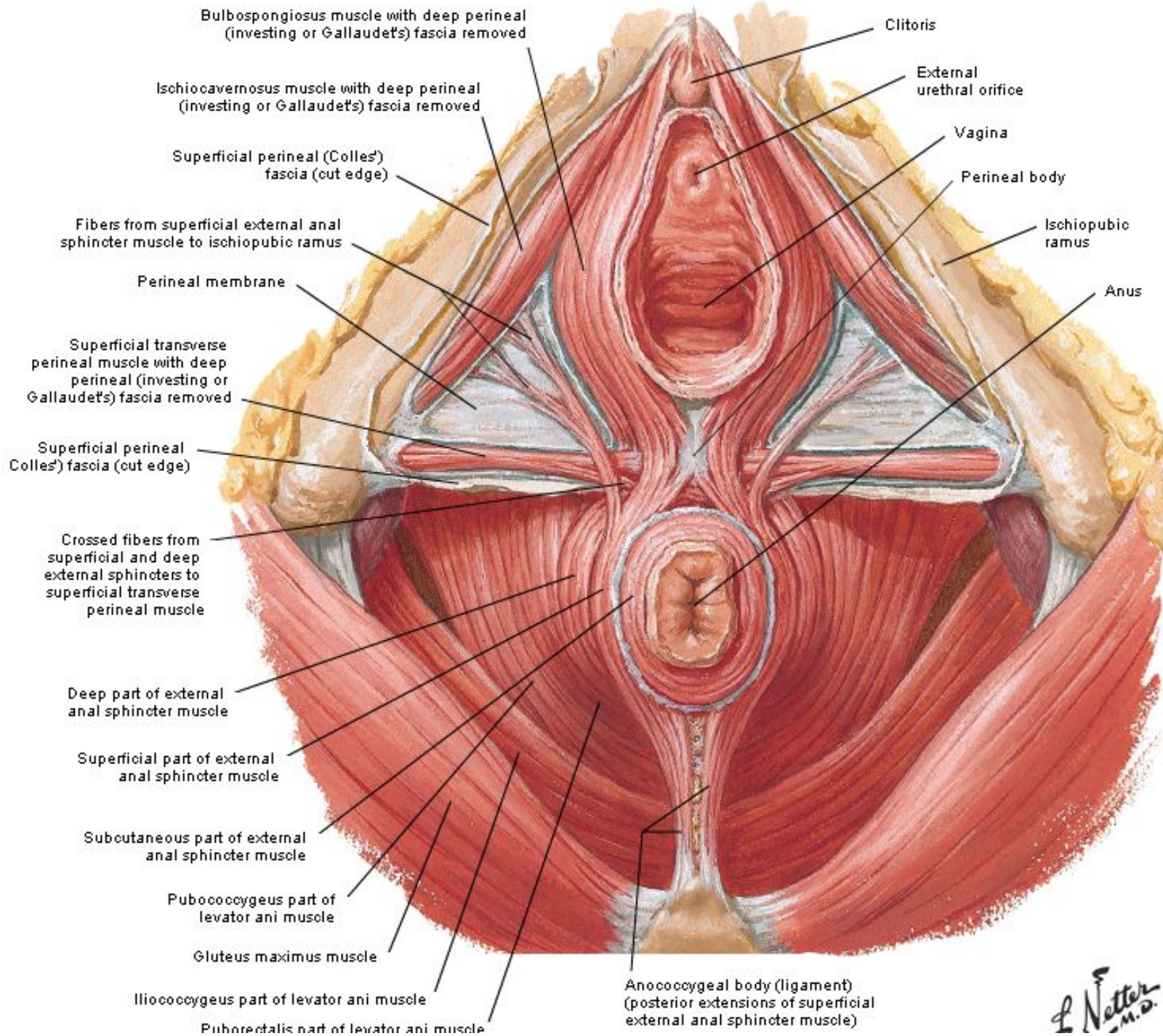












*L. Netter M.D.*

