

Hardware: keyboard

Presented by: Zaira Shiritova

Instructor: Omar Abdul-Latif



Outline

- Description
- Usage
- Designs
- Connection types
- Wireless keyboards
- Conclusion
- References



Description

- Arrangement of rectangular buttons
- Peripheral partially modelled after the typewriter keyboard
- Designed to input text and characters, as well as to operate a computer



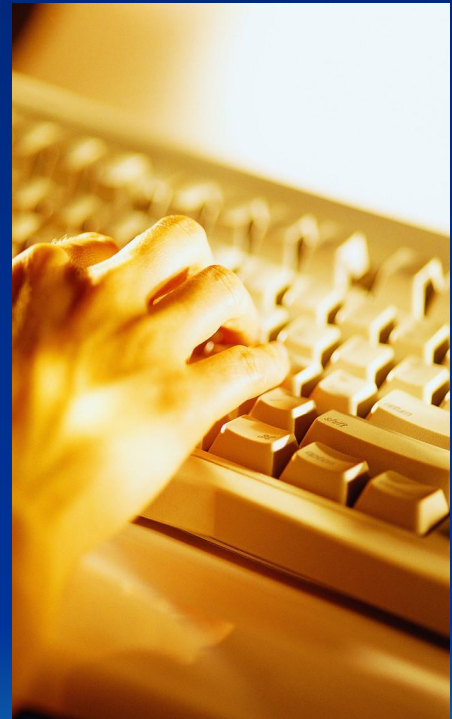
Connection types

- DIN-5
- PS/2
- USB connection

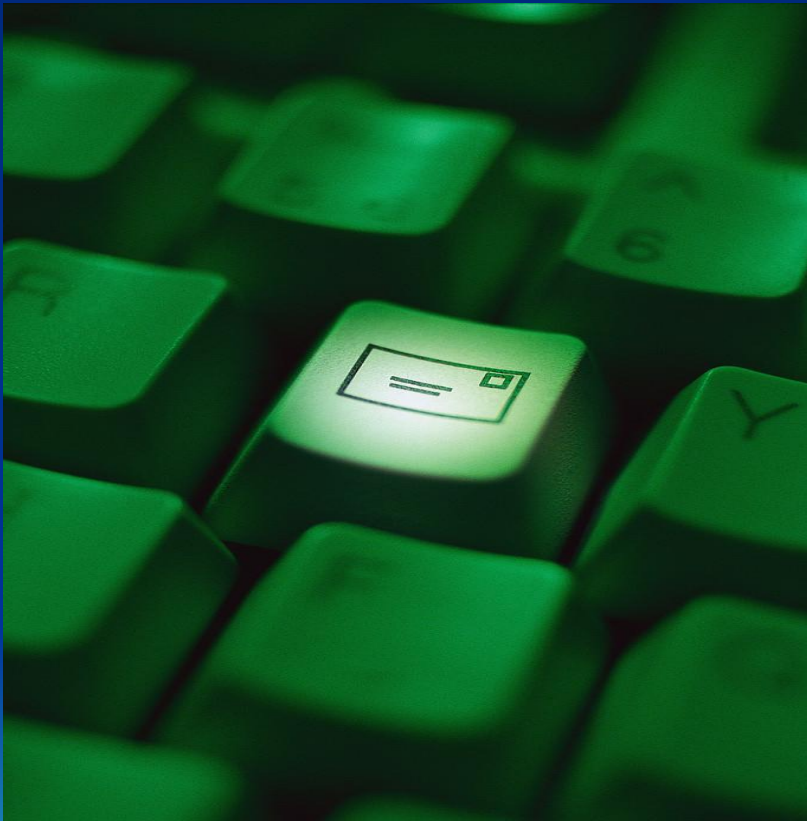


Usage

- ❖ Used to type text into a word processor, text editor, or any other textbook
- ❖ Interpretation of key presses is generally left to the software



Designs



- The number of keys on a keyboard varies from the standard of 101-keys to the 104-keys
- Different keyboards layouts
- “Internet keyboards” with pre-programmed internet shortcuts

Wireless keyboards

- ✓ Have become popular for their increased user freedom
- ✓ Need batteries to work
- ✓ May pose a security problem due to the risk of eavesdropping



Conclusion

- Keyboard is a peripheral partially designed to input text and characters
- Different keyboard layouts
- Different connection types



References

- <http://en.wikipedia.org/wiki/Keyboard>
- <http://www.ckls.org/~crippel/computerlab/tutorials/keyboard/page1.html>
- <http://www.microsoft.com/hardware/mouseandkeyboard/default.mspx>



Thank you...



Any questions?

