



Cyberlink Power

Direktor



00:00

00:30

01:00

01:30

01:52:00

02:30

03:00


03:30

04:00



My Working Holiday In California - 2013

Don't Stop Believin



CyberLink PowerDirector is a digital video editing program for creating professional-looking movies and slideshows that you can send to friends, burn to discs, or upload to servers on the Internet. PowerDirector provides three editing modes for your multimedia: a full-featured editor, a simplified editor and a tool for creating slideshows.

PowerDirector main menu

This menu offers three methods for creating multimedia files.

Full editor - is intended for full access to all the functionality of capturing, editing and recording multimedia.

Simple editor - it is used for simple, accelerated creation of video and work with multimedia.

Tool for creating slideshows - serves to create demonstrations of photographic slides.



Begin, since it is more convenient for you.

In the main menu of the program, you can determine how you want to create your video.

If you have already edited the video, then you use a full editor with all the functions that can handle 100 tracks and controls key frames.

But if you are new to video editing or do not have enough time for detailed video design, a simplified editor with its Magic Movie tools is just the best solution for you! Just select the video and photos that you want to use, select the template and PowerDirector will do the rest for you.

Click Full Editor in the main menu of CyberLink PowerDirector.

PowerDirector displays the editing window.

The "edit" window in PowerDirector

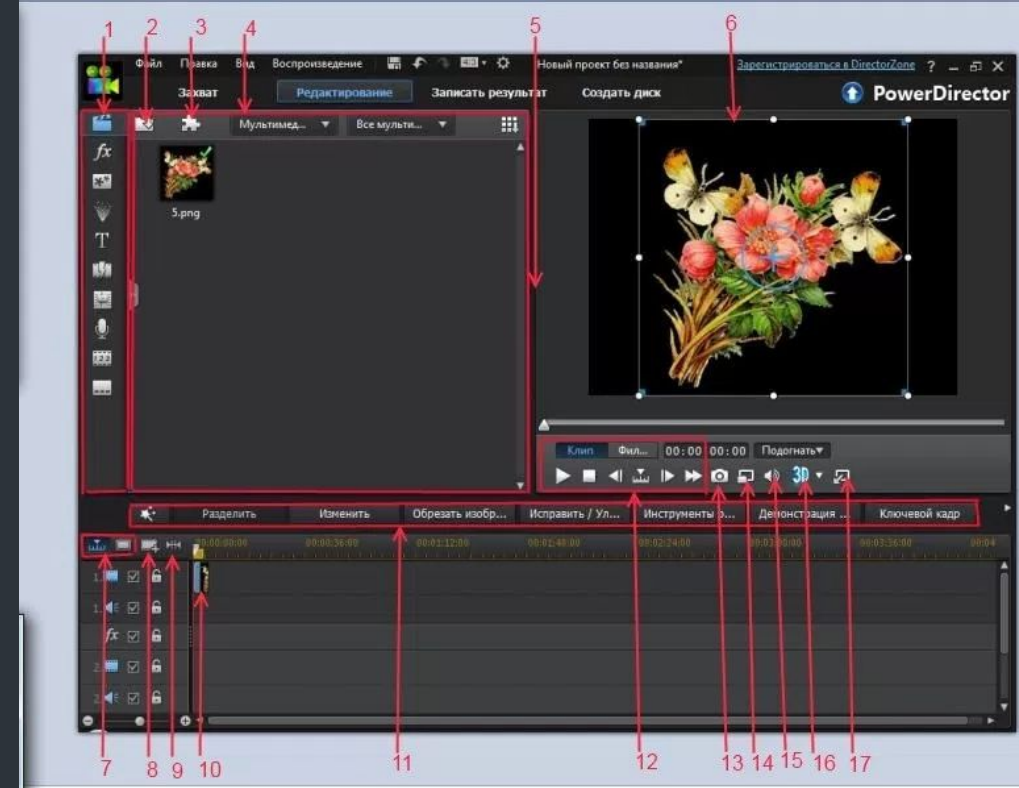
1. Import videos and photos

Import videos and photos for the movie from a hard drive or external source.

Follow the steps below to import videos or photos.

Click Import video

Click Import media files. Find the file and select it.



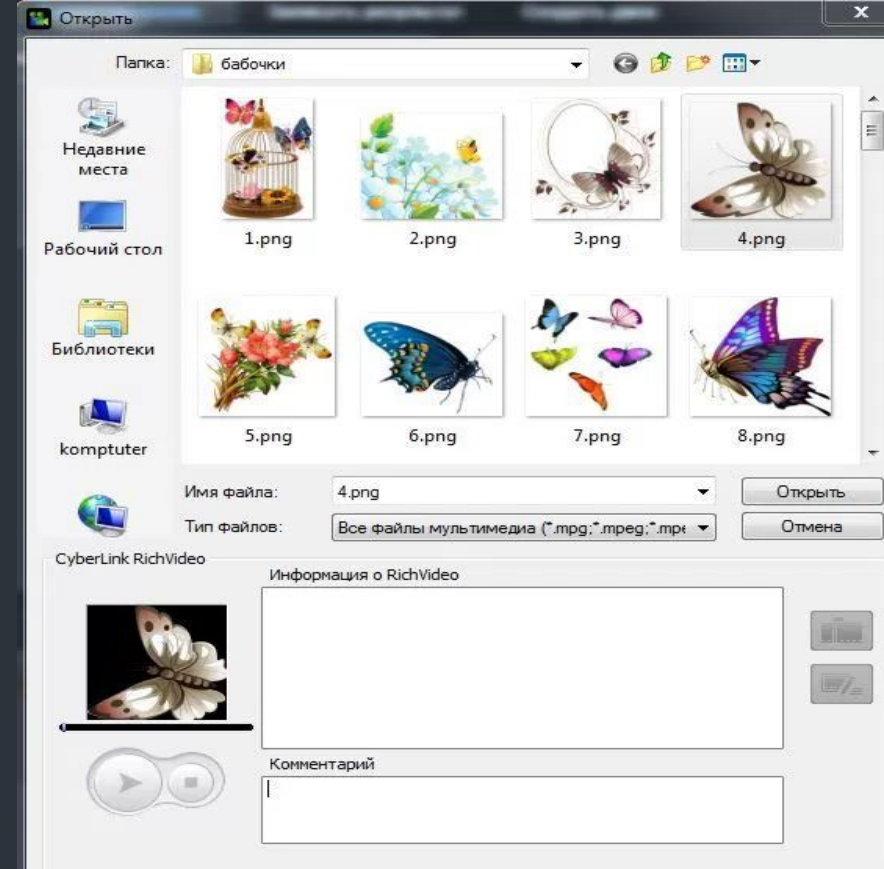
- 1.The effect management center
- 2.Import video
- 3.Stop/Play button
- 4.Library
- 5.Ability to expand the workspace
- 6.Open view
7. Timeline mode / Storyboard mode
- 8.Management of the track
- 9.View the entire film
- 10.Platform
11. Functional buttons
- 12.Preview
- 13.Create a picture
- 14.Quality of viewing
- 15.Setting the volume
- 16.Activation
17. Disable the preview window.

Open window

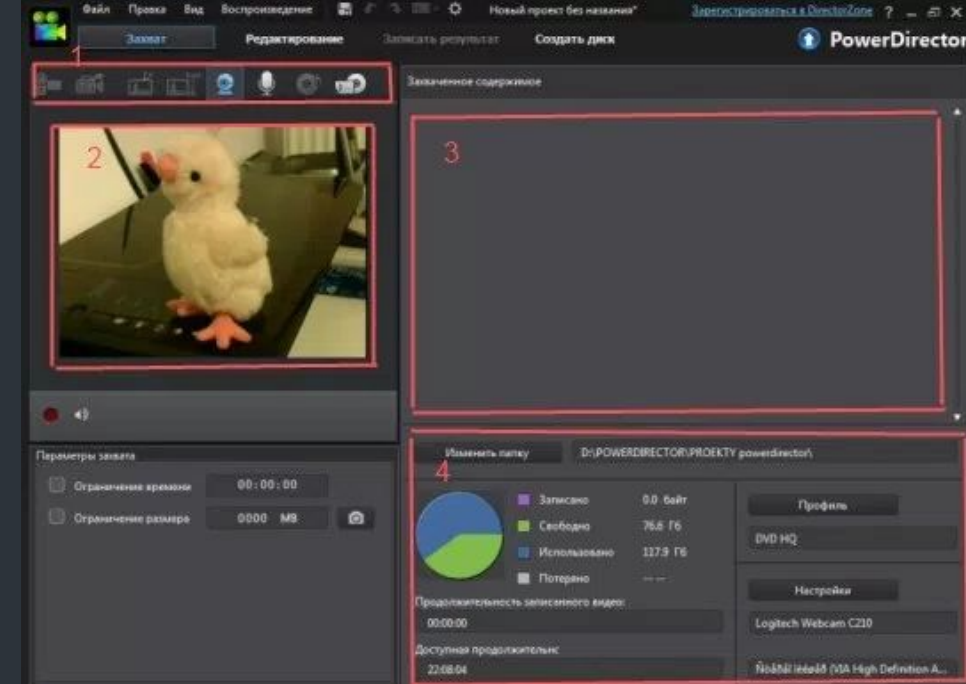
2. Multimedia Capture

Click the Capture button in PowerDirector.

PowerDirector determines the available capture devices, and the capture mode window is opened.



Capture mode



1. Device selection area
2. The Device Selection Area window
3. Area of saved clips
4. Information display area