



ART

BY PETER SEMENOV

FAVOURITE ARTIST

FRANZ VON STUCK

(February 23, 1863 – August 30, 1928) was a German painter, sculptor, engraver, and architect.

Born at Tettenweis near Passau, Stuck displayed an affinity for drawing and caricature from an early age. To begin his artistic education he relocated in 1878 to Munich, where he would settle for life. From 1881 to 1885 Stuck attended the Munich Academy.

Stuck's subject matter was primarily from

mythology, inspired by the work of Arnold Böcklin. Large forms dominate most of his paintings and indicate his proclivities for sculpture. His seductive female nudes are a prime example of popular

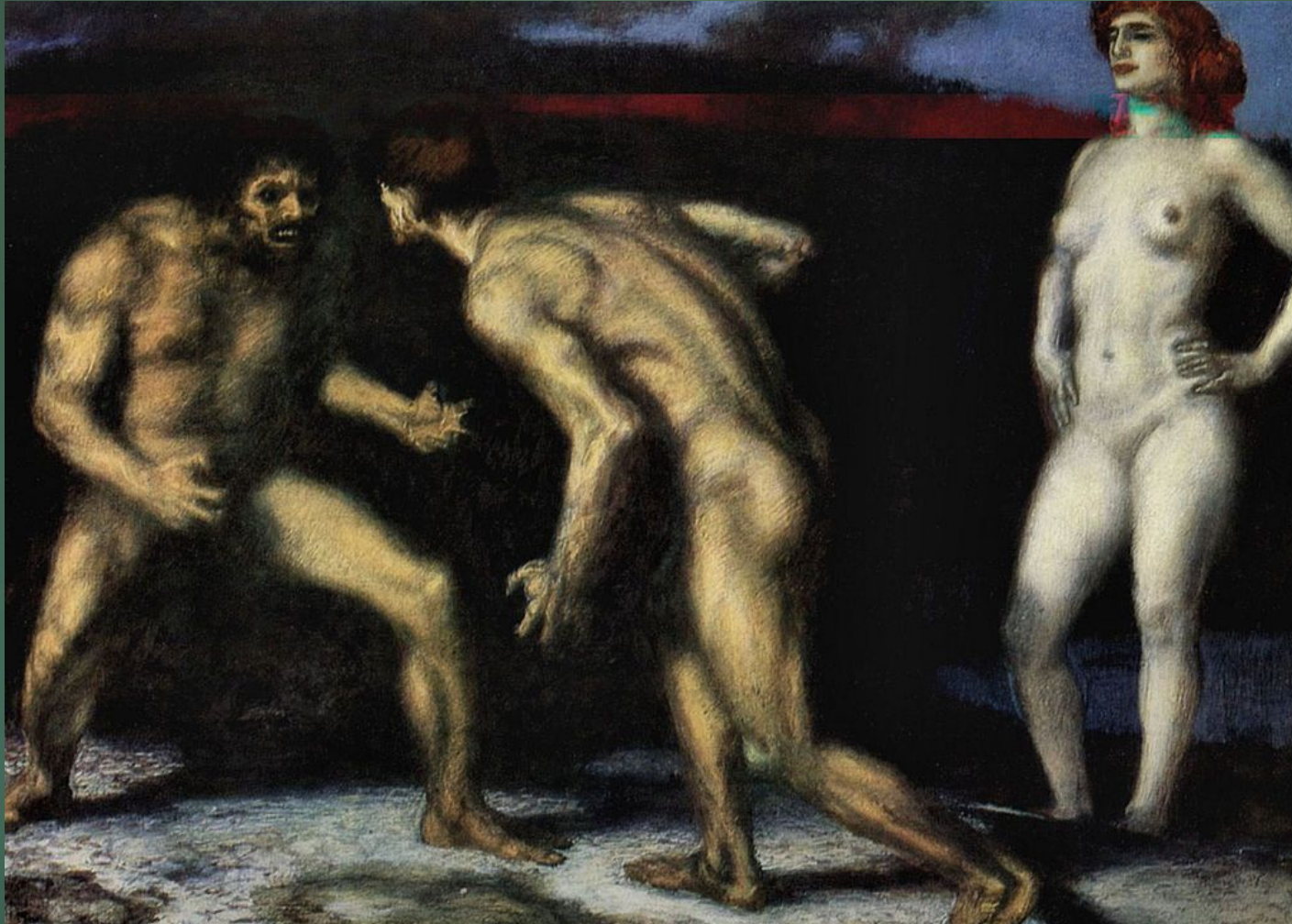
Symbolist content.



SISYPHUS, 1920



The Struggle for Woman



ADAM AND EVE



FAVOURITE PORTRAIT by Gustave Courbet



Deeply emotional, **The Desperate Man** is among the earliest works by the artist that he completed in 1845. With his eyes wide-open, Courbet is staring straight at you and tearing his hair. Popular at the time, the Romantic approach to portraiture was concerned with expressing emotional and psychological states of the individual. And although Courbet never considered himself a Romantic painter, he coped with the task extremely well. When you look at this self-portrait you do not only experience his desperation (as the title suggests) but you also get the idea of what kind of personality Gustave Courbet was himself. Bold, wily, radical, ambitious and determined. Determined to challenge established painting genres, protest against traditional clichés, and change the course of art history.

FAVOURITE LANDSCAPE by William Turner



Turner's landscapes have a divine, surrealistic and symbolic quality. His paintings may be viewed as abstractions and an effort on his part to focus on the interplay between light and its surrounding atmosphere.

Rain, Steam and Speed – The Great Western Railway (1844) is one of JMW Turner's masterpieces in which water, land, sky and a man-made symbol of industrialization come together in a tight frame. A hazy atmosphere caused by lashing rain over foggy clouds of steam from the speeding train presented an intimidating scenario at the time.

“Garage” Museum of Contemporary Art in Moscow



Founded in 2008 by Dasha Zhukova and Roman Abramovich, Garage is the first philanthropic institution in Russia to create a comprehensive public mandate for contemporary art.

One of the Museum's key missions is the promotion of contemporary art as a space for public dialogue and reflection on the questions societies are facing today. As well as exhibitions by some of the most influential Russian and international artists working today (including Marina Abramović, Raymond Pettibon, Viktor Pivovarov, and Yayoi Kusama), Garage offers visitors a broad-ranging education program for children and adults, as well as film screenings, concerts, performances, and other events.



Garage Bookshop is open daily and offers a great selection of books, magazines, and souvenirs produced in Moscow, including some made in collaboration with artists. In comfortable café with a summer terrace and original cuisine you can even order breakfast at any time of day.





At the center of Garage's exhibition, publishing, and research projects is the museum's collection—the world's largest archive on the history of Russian contemporary art from the 1950s to the present. Garage Archive Collection is open to Russian and international researchers, and currently holds over 400,000 documents. Garage is also home to the first Russian public library on contemporary art, which is located in Garage Education Center and is open to all.



Whatever you are looking for, we have something to offer: exhibitions, lectures, meetings with experts, open-air film screenings, cocktails, festivals, concerts, performances, discussions, park walks, and more.