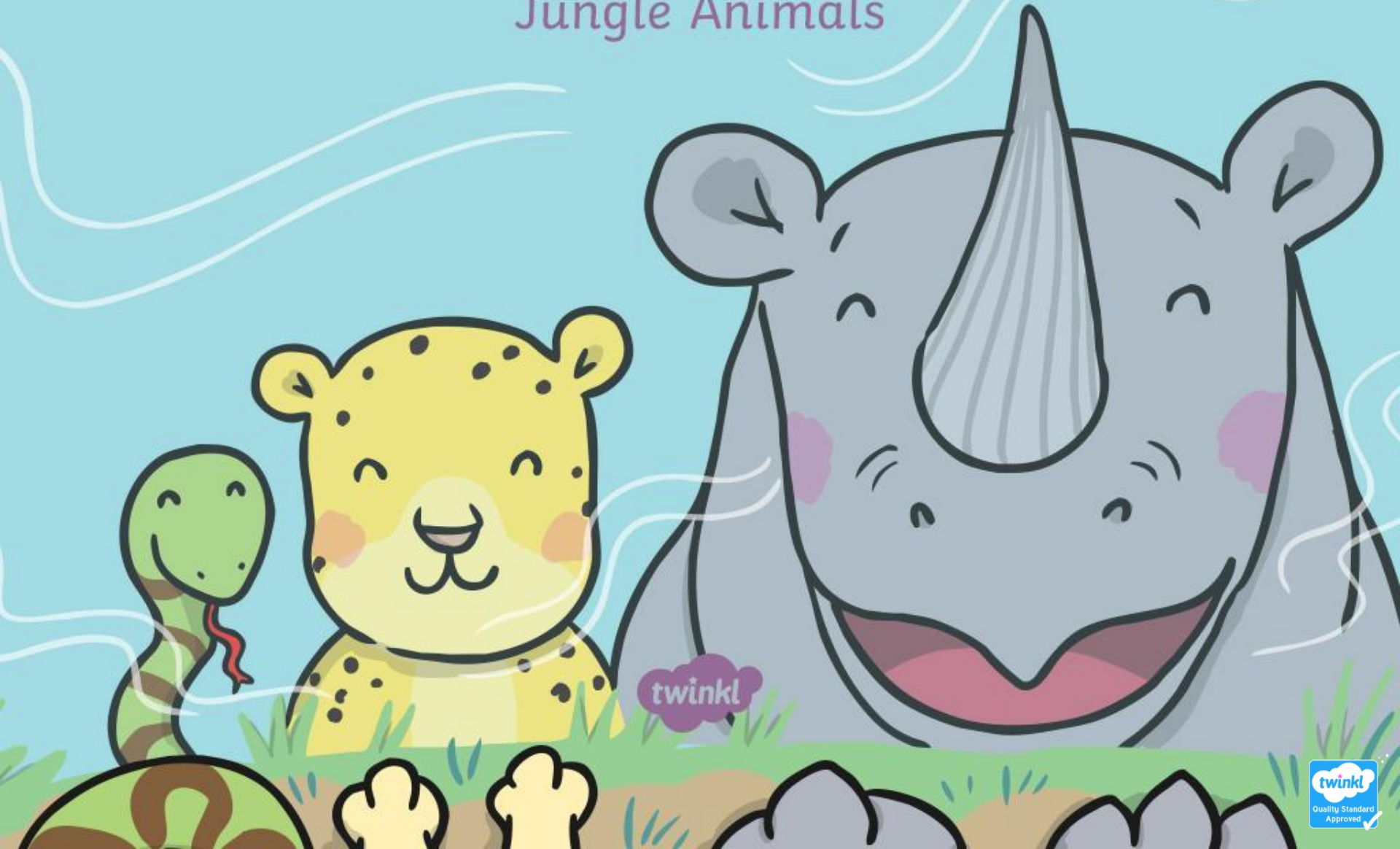


# What Am I?

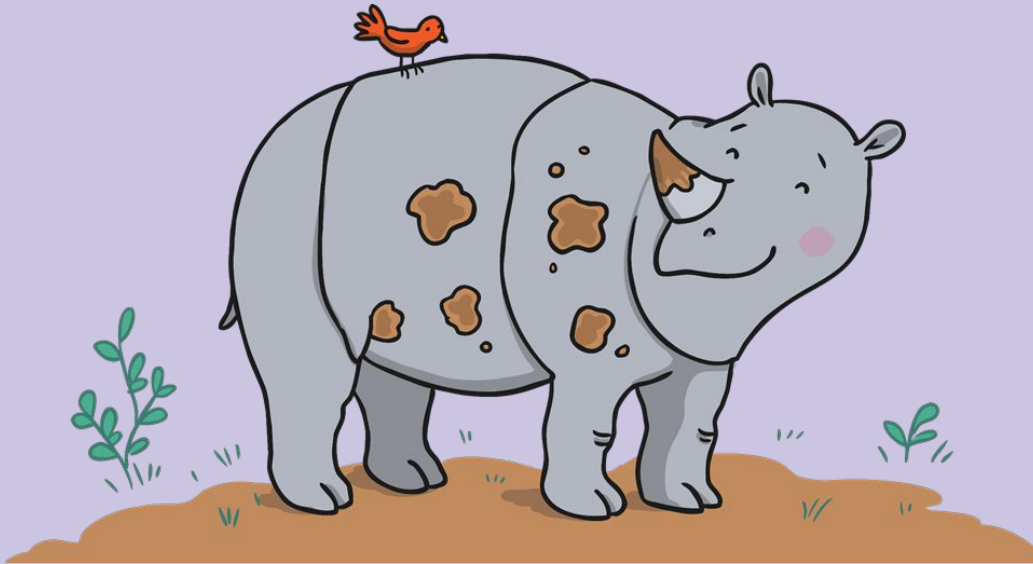
Jungle Animals



# Jungle Riddles

Can you follow the clues to work out which animal Ronald is describing?

Click on Ronald the Rhino to start!



# What Am I?

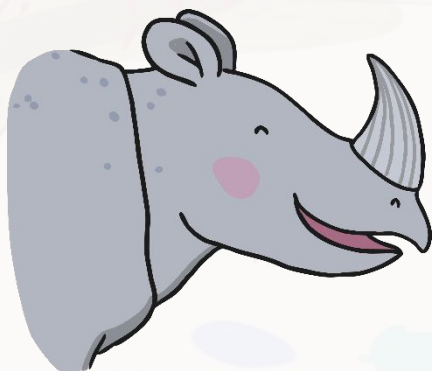
Click on the leaves for clues.



I have big ears and no fingers or toes.



I have tusks on my face and a trunk for my nose.



Click on me to reveal the answer.



Previous

Next



# What Am I?

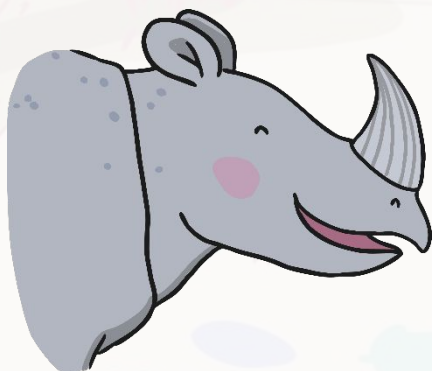
Click on the leaves for clues.



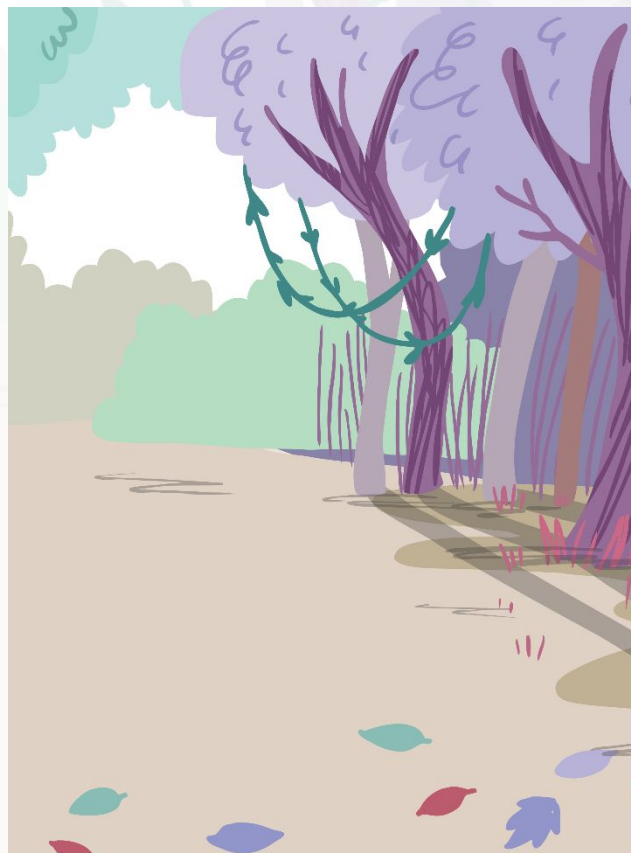
A long, patterned body, high in a tree.



My eyes and large jaws help me hunt for my tea.



Click on me to reveal the answer.



Previous

Next



# What Am I?

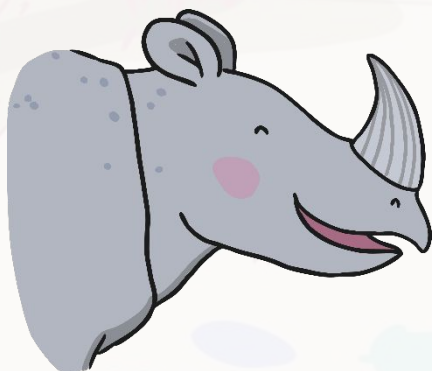
Click on the leaves for clues.



I make webs with my body  
and have 8 hairy legs.



I eat bugs and have babies  
that hatch from small eggs.



Click on me  
to reveal the  
answer.



Previous

Next



# What Am I?

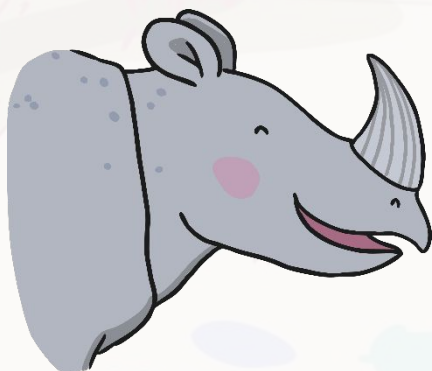
Click on the leaves for clues.



My tail is curly, I'm cheeky and hairy.



I swing through the trees and I'm not very scary!



Click on me to reveal the answer.



Previous

Next



# What Am I?

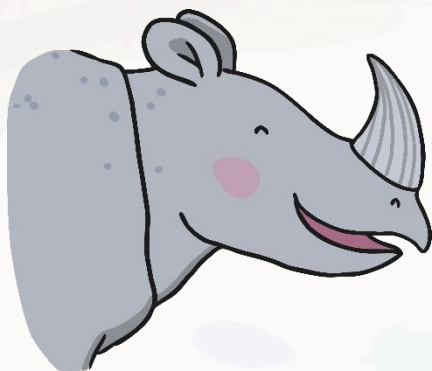
Click on the leaves for clues.



My beautiful mane reaches  
right round my head.



I'm the king of the jungle and I  
want to be fed!



Click on me  
to reveal the  
answer.



Previous

Next

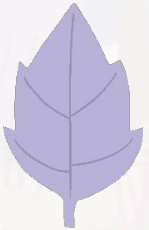


# What Am I?

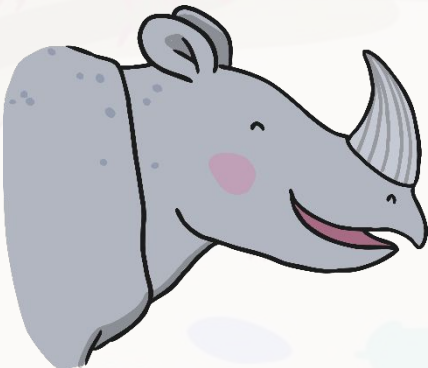
Click on the leaves for clues.



A beak helps me to talk and I have colourful feathers.



I love to fly high, no matter the weather.



Click on me to reveal the answer.



Previous

Next





# What Am I?

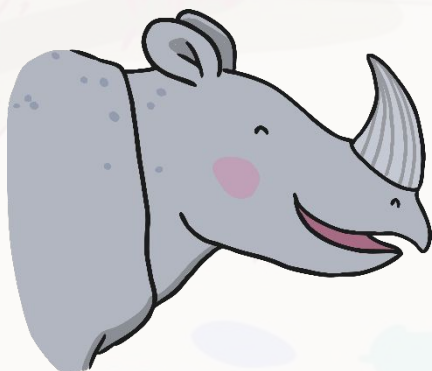
Click on the leaves for clues.



I have bright, poisonous skin  
and tiny webbed feet.



My babies are tadpoles and I  
eat flies for a treat!



Click on me  
to reveal the  
answer.



Previous

Next



# What Am I?

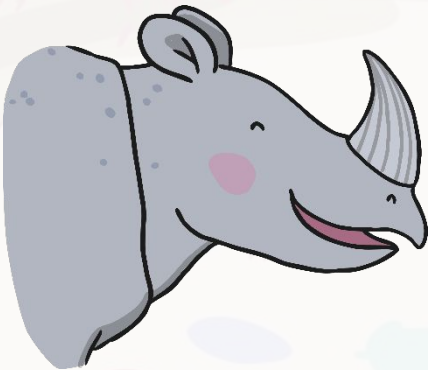
Click on the leaves for clues.



I lurk in the water, with skin green and rough.



Sharp, pointy teeth and jaws that are tough.



Click on me to reveal the answer.



Previous

End





twinkl