





















Irena Solska  
in Jerzy Żuławski's texts







Wanda Siemaszkowa  
Wysocka

1867-1947



Stanisława

1877-1941



Irena Solska  
in Jerzy Żuławski's texts

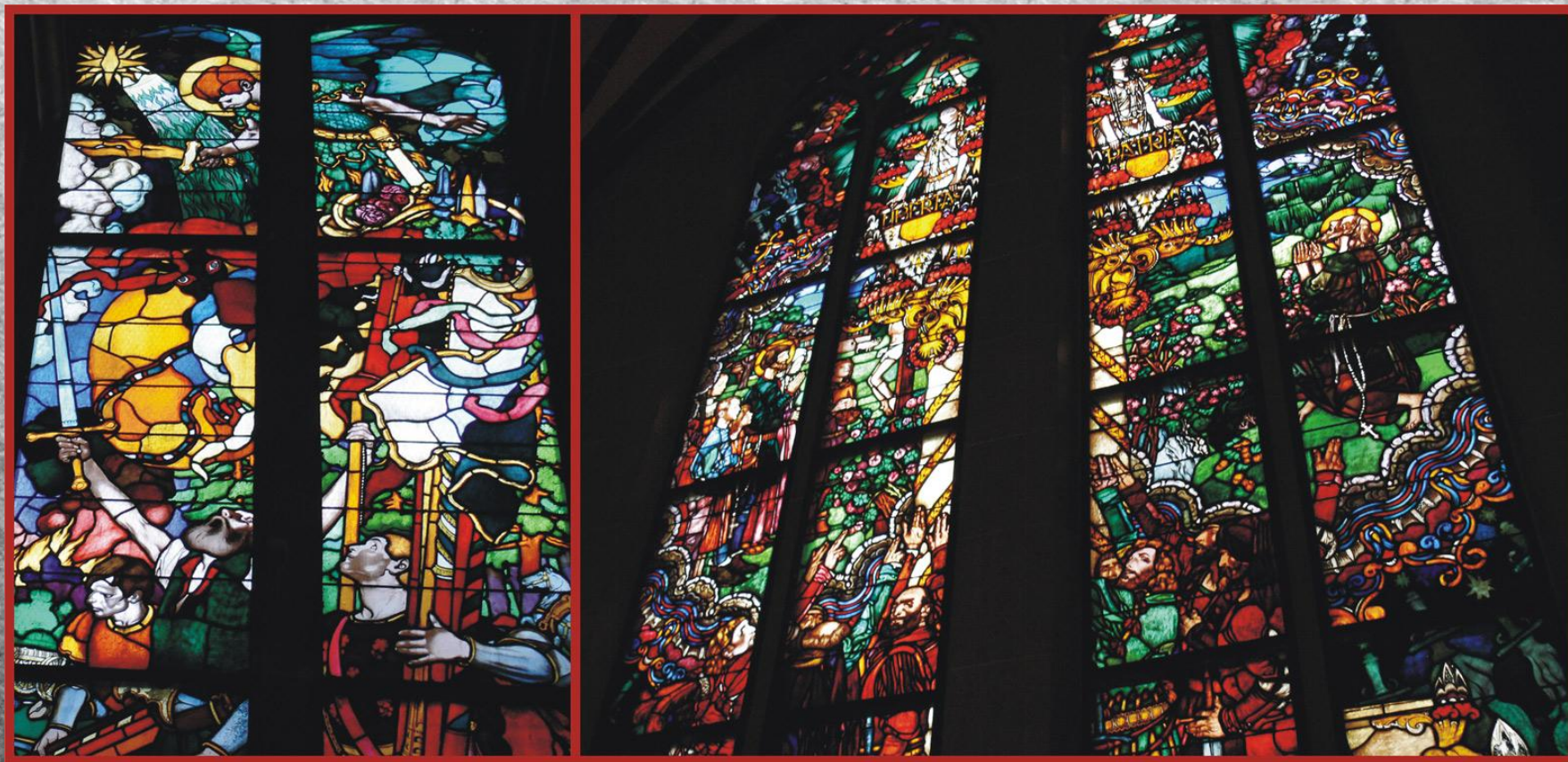






St.Nicolas Cathedral, Fribourg





Some of the stained glasses by Jozef Mehoffer

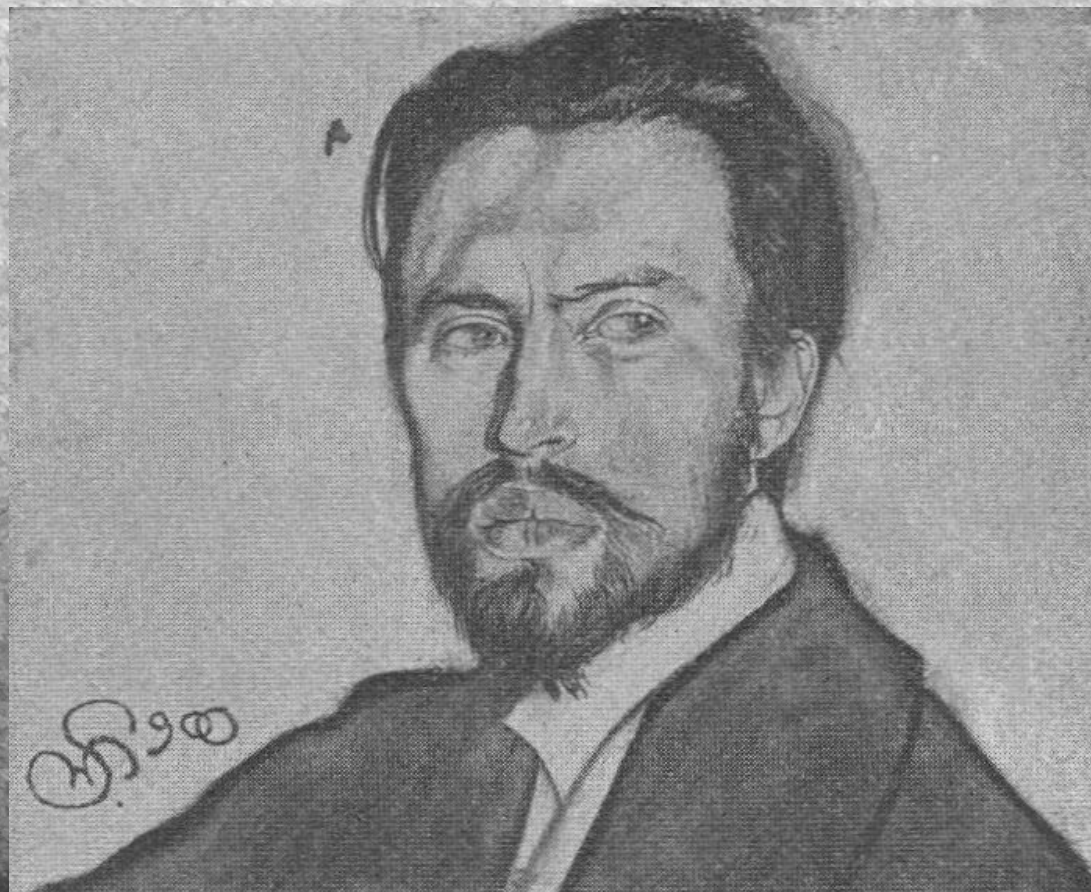








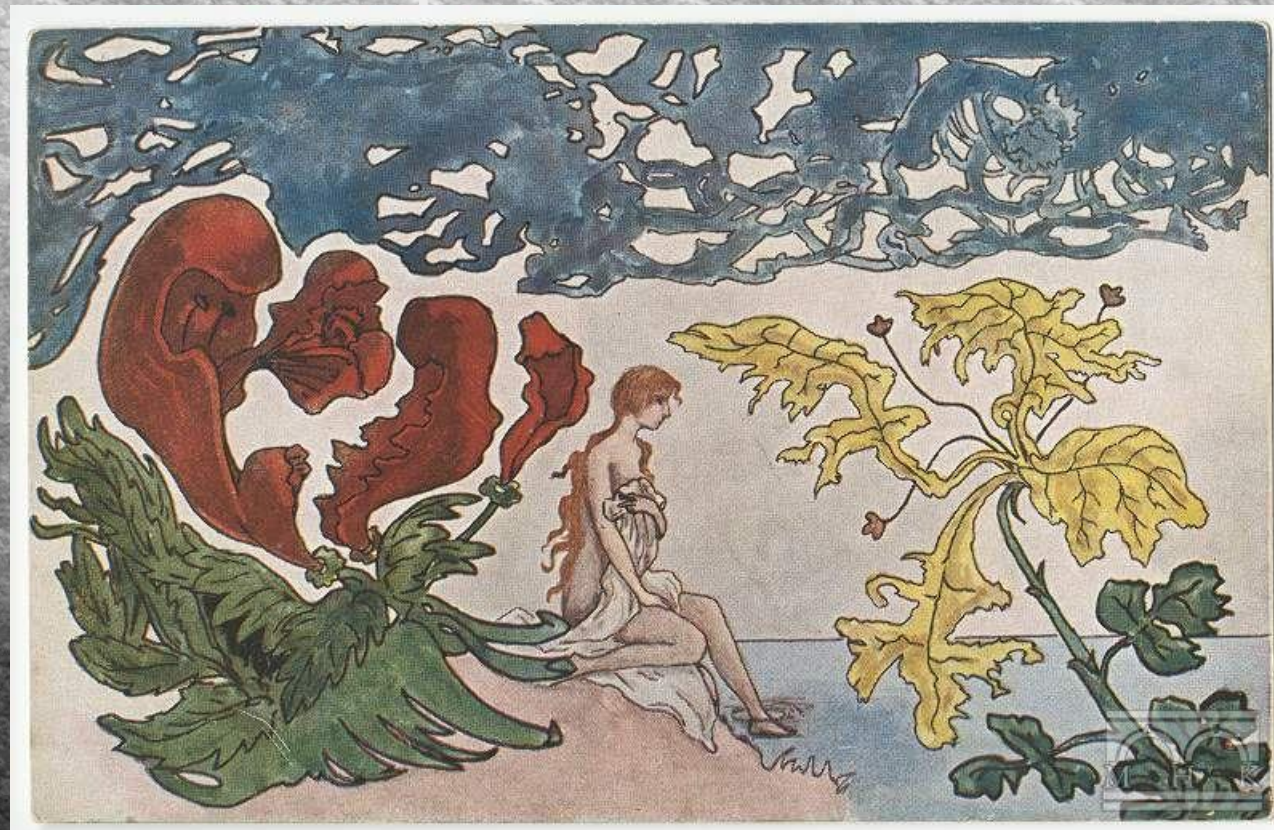




Stanisław Wyspiański. Portrait of Jerzy Żuławski. 1900



Stanislaw Eliasz Radzikowski, series of  
postcards







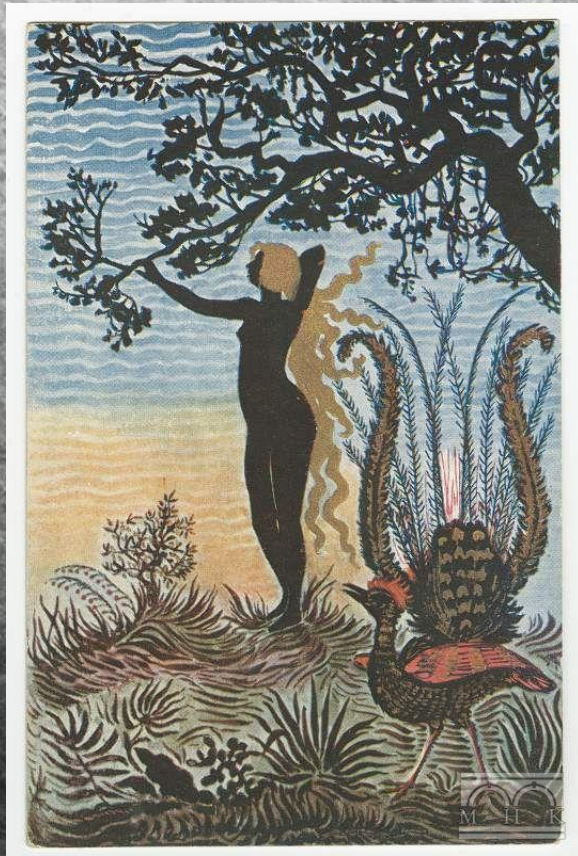
















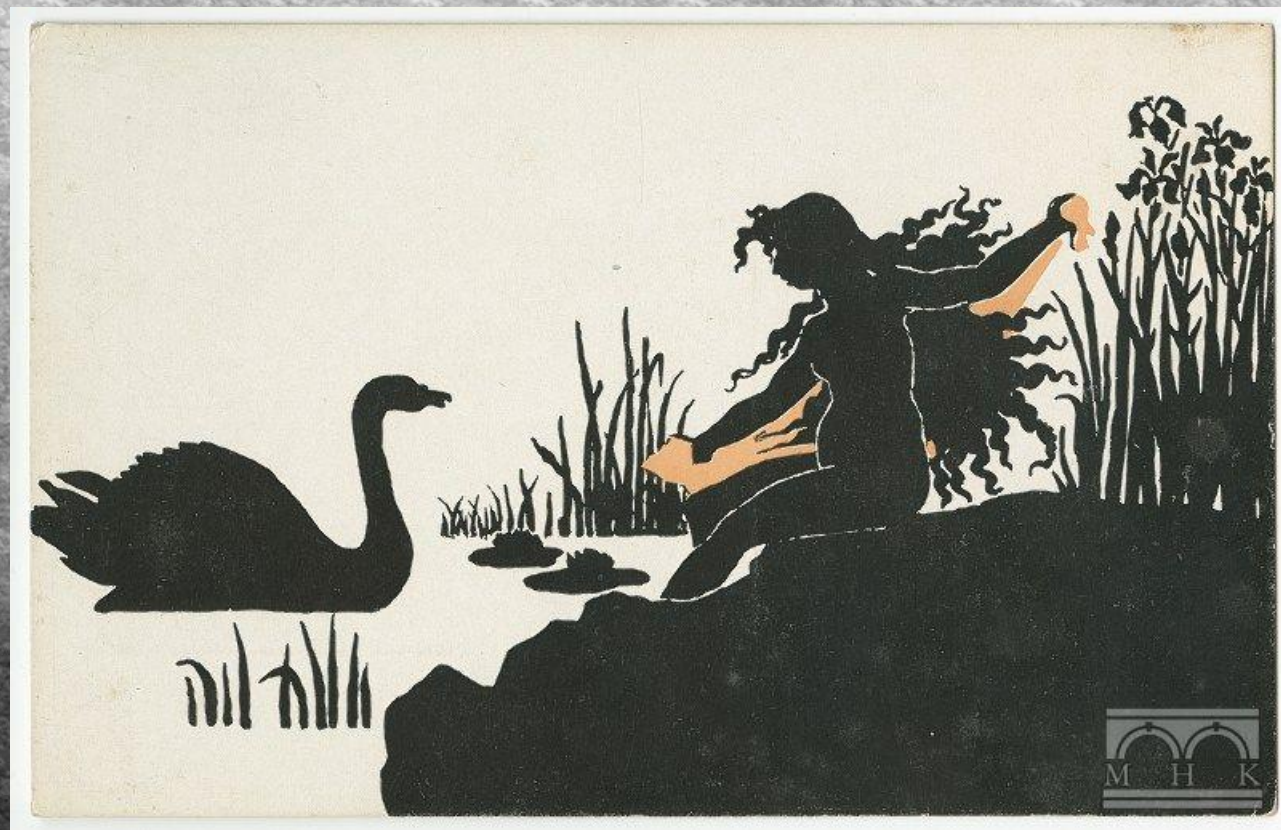






















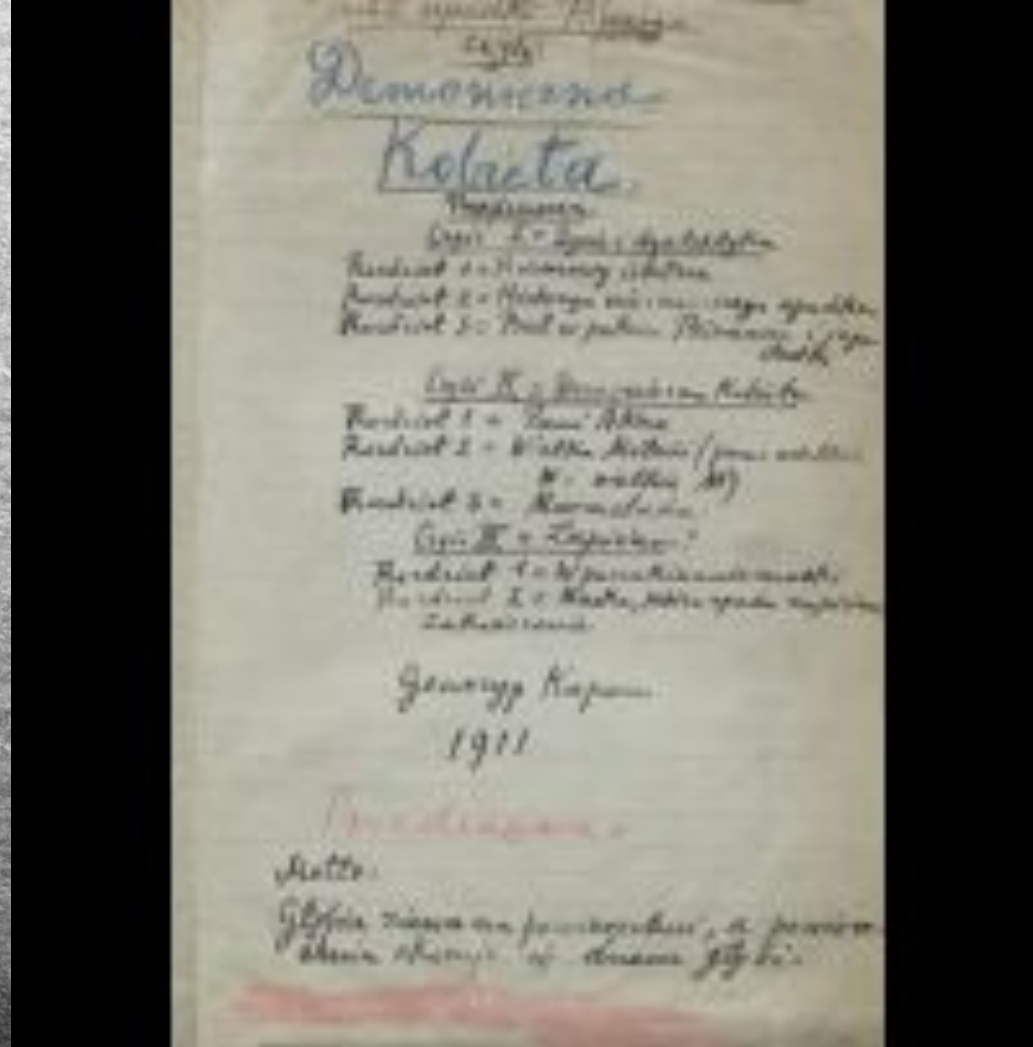






Witkacy (Stanisław Ignacy Witkiewicz, 1885-1939).  
Autoportrait, 1910.

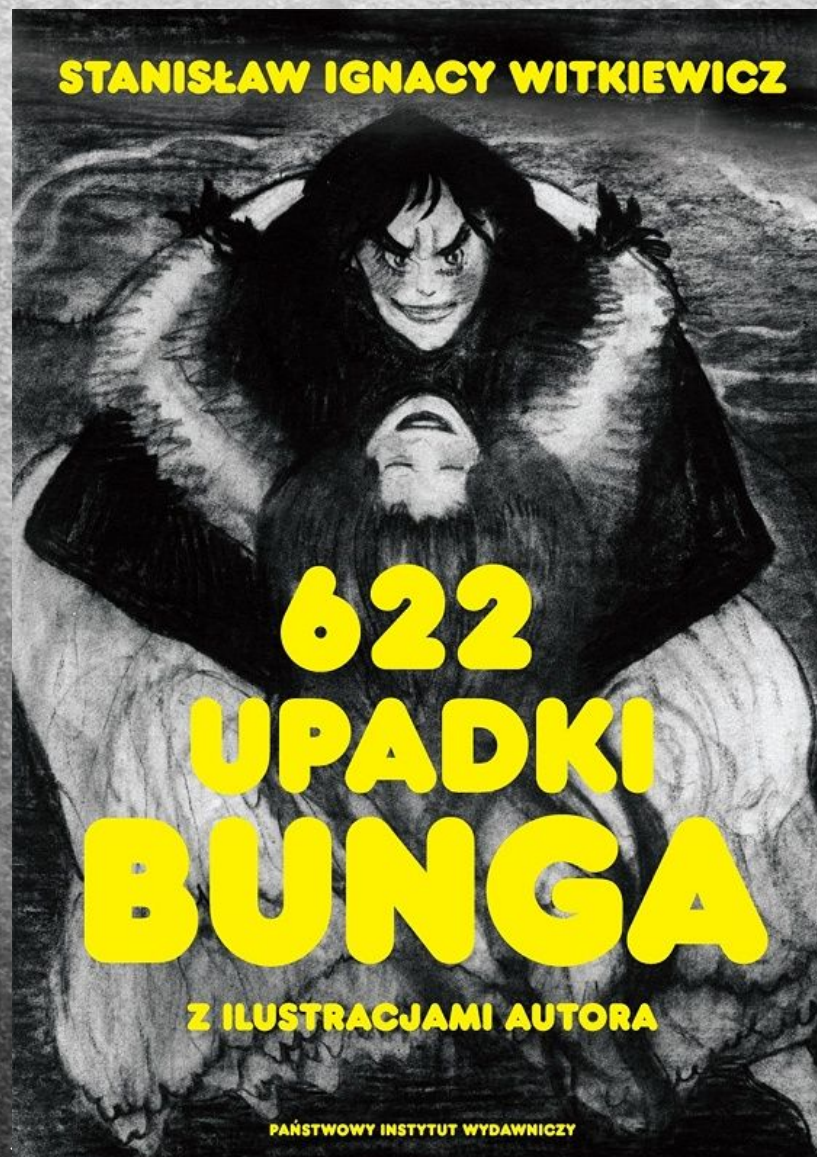




The title page of 622 *Downfalls of Bungo, or the Demonic Woman,*

Department of Manuscripts, Ossolineum, Wrocław





One of the editions of *622 Downfalls of Bungo*,  
with the author's drawing on the title page.





10. „Pani Akne jest ciężkostrawna”, Irena Solska, rysunek węglem

Stanislaw Ignacy Witkiewicz, Irena Solska as Akne, the  
title „Demonic woman” of his novel  
(photography of a drawing that was lost)





Stanisław Iganycy Witkiewicz. Irena Solska, drawing, 1910  
(photo, the original is lost)





Stanisław Wyspiański, Portrait of Jerzy Żuławski, 1899.









Lotte Sarrow as Salomé





Lovis Corinth. Gertrud Eysoldt as Salome,  
1903, Classic Foundation, Weimar





Irena Solska as Jempsar in *Cactus Joseph*,  
Cracow, 1914



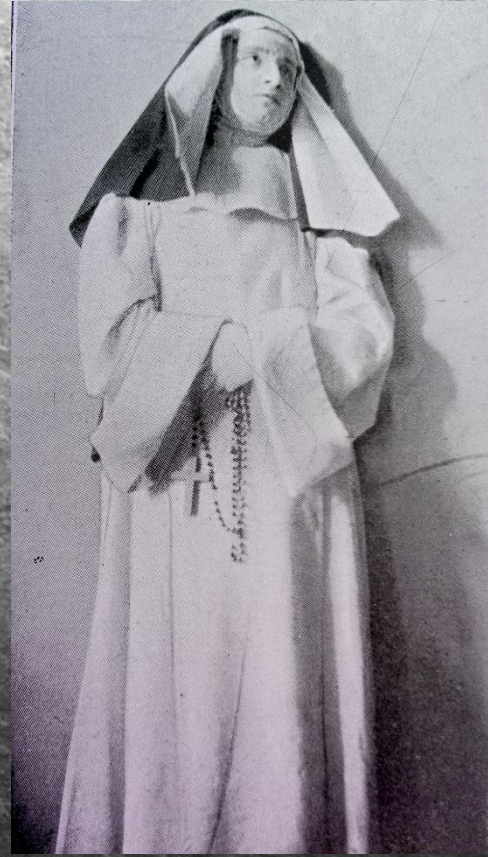
Jerzy Żuławski, *Eros and Psyche*, 1904  
(Photographs of Irena Solska in the role of  
Psyche from the first edition of the play)



















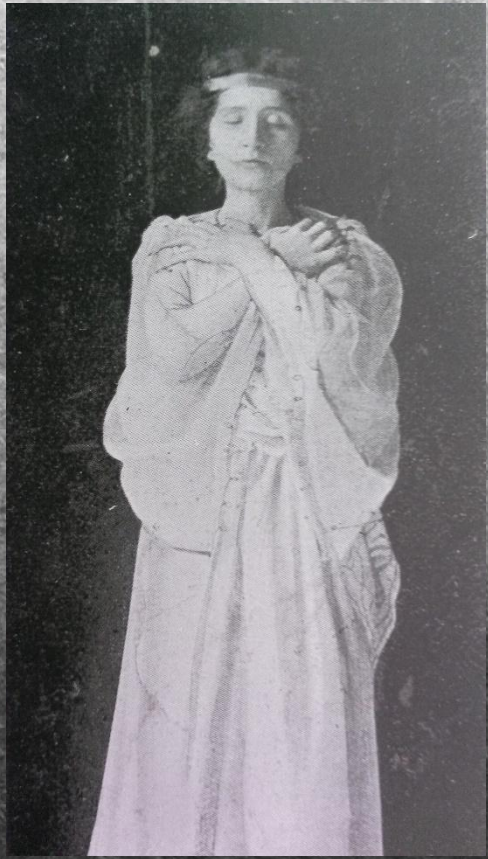
















Ludwik Solski (1855-1954), photo by S. F. Einfeld, 1907.





Irena Solska and Ludwik Solski, reproduction of the lost drawing by Stanisław Wyspiański, 1904





Jerzy Żuławski, 1905





Irena Solska as Mrs. Erlynne in *Lady Windermere's Fan*





Solska as Ofelia, in *Death of Ofelia* by  
St. Wyspianski



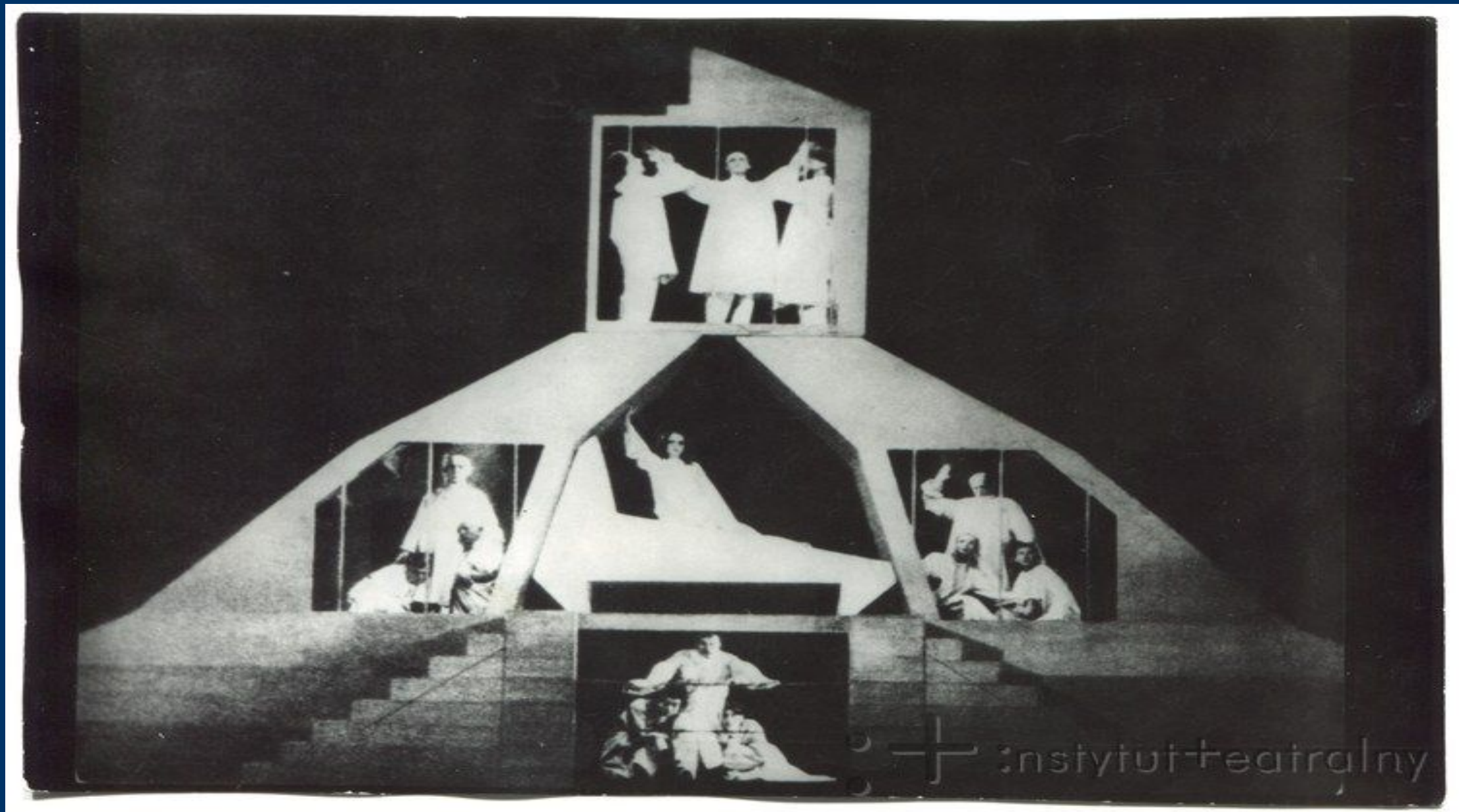


Karol Frycz. Solska as Melisande. 1907









Институт Театральный























