



gfl
SKIN CARE

SET UP

NEW IBIS RANGE 2019 2020

30.07.2019

New Solution

New holder in ABS Anti-theft

CODE	DESCRIPTION		PCS/BOX	PCS/PALLET
PDB#NE	"PUMP DISPENSER HOLDER" ABS BLACK WITH TAPE	for 3in1 cartidge + hand soap	20	1'920
PDS#NE	"PUMP DISPENSER HOLDER" ABS BLACK WITH SCREW	for 3in1 cartridge + hand soap	20	1'920
PDB#BI	"PUMP DISPENSER HOLDER" ABS WHITE WITH TAPE	for shampoo cartidge	20	1'920
PDS#BI	"PUMP DISPENSER HOLDER" ABS WHITE WITH SCREW	for shampoo cartidge	20	1'920

- 50% discount for the first installation
- Available with screw or adhesive
- Recommended in black for 3in1 + hand soap cartridges
- Recommended in white for the shampoo



New Dispensers produced by GFL

VISUALS LINKED TO BRAND PASSION



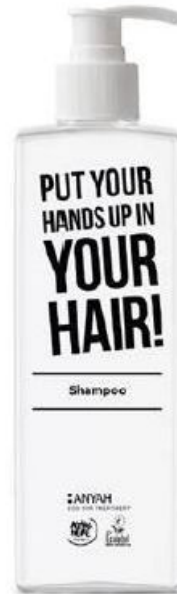
3-in-1 soap



Shampoo



3-in-1 soap



Shampoo



3-in-1 soap



Soap bar



New Dispenser & Soap reference

CODE	DESCRIPTION		PCS/BOX	PCS/PALLET
FLR500EXT#024777	FLR500EXT IBIS 3IN1	For shower & sink	18	864
FLR500EXT#024778	FLR500EXT IBIS SHAMPOO	For shower	18	864
FLR500EXT#024779	FLR500EXT IBIS STYLE 3IN1	For shower & sink	18	864
FLR500EXT#024780	FLR500EXT IBIS STYLE SHAMPOO	For shower	18	864
FLR500EXT#024781	FLR500EXT IBIS BUDGET 3IN1	2 cartidges for shower & sink or 1 cartridge + 1 solid soap	18	864
B0812SIEXT#025160	SOLID SOAP 12 G IBIS BUDGET	2 cartridges for shower & sink or 1 cartridge + 1 solid soap	500	20'000

New Dispensers

KEY INFORMATION

- **Pump dosage** optimized for individual use - 1.2 cc.
- **Inviolable** and **not refillable** sealing system for sanitary and security reasons
- Made of **100% recycled and recyclable PET**
- **Screws** or **double sided tape** installation system
- A **semi-transparent bottle** to check the quantity of product left on both sides of the bottle
- Cosmetic details visible on the side of the bottle in **17 languages**



Global Recommendations



MANDATORY

- **3-in-1 dispenser** in the shower
- +
- **3-in-1 dispenser** near the washbasin

HIGHLY RECOMMENDED

- **Shampoo** in the shower

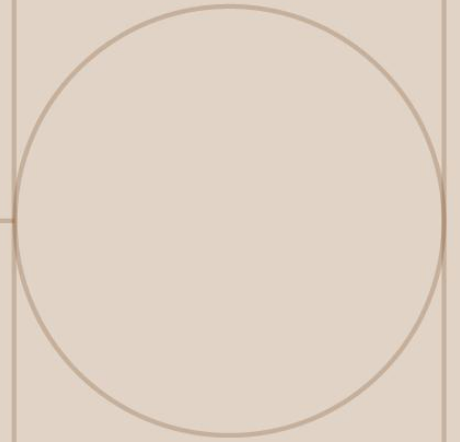
MANDATORY

- **3-in-1 dispenser** in the shower
- +
- **1 soap bar** near the washbasin

HIGHLY RECOMMENDED

- **3-in-1 dispenser** in the shower
- +
- **3-in-1 dispenser** near the washbasin

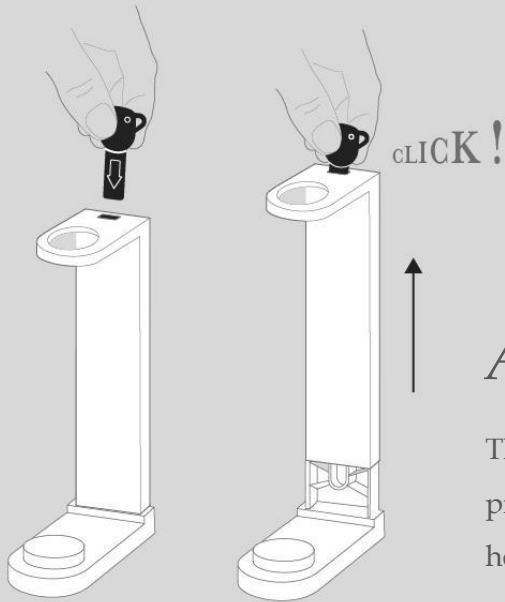
_Technical information



_ How to install the Pump dispensing System

Pump Dispenser Holder

available with Screws or double-sided Tape installation



Anti-theft

The holder is composed of 2 pieces, anti-theft, accessible with housekeeping key.

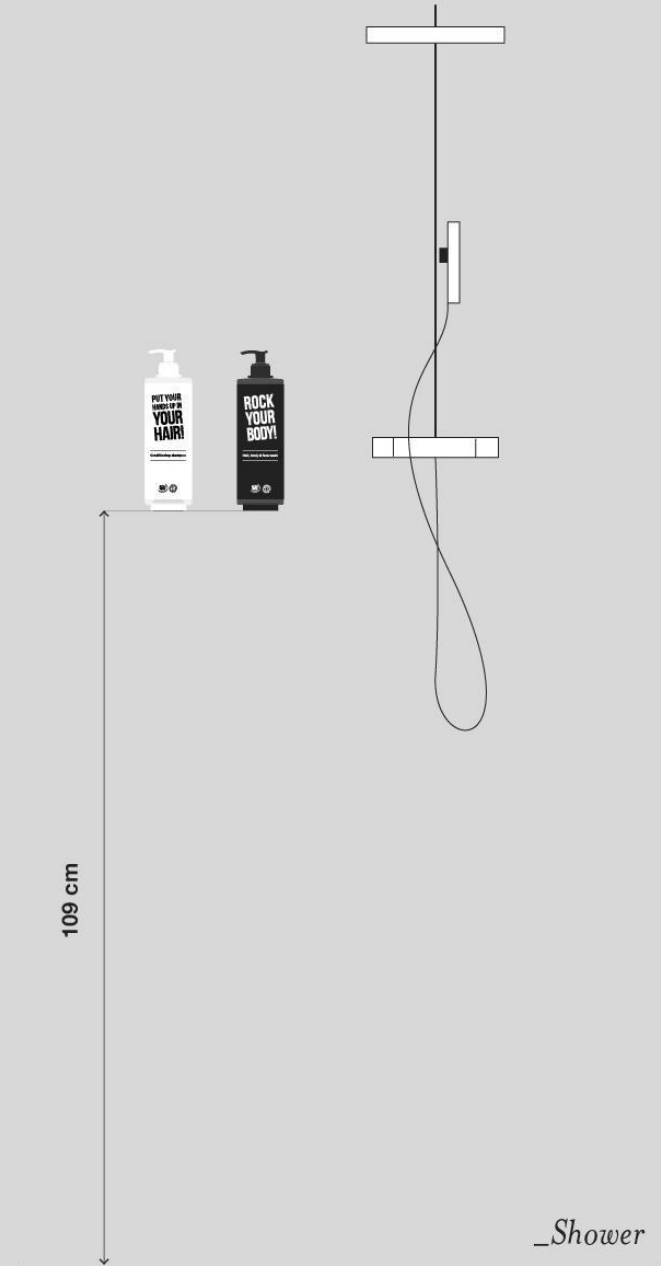
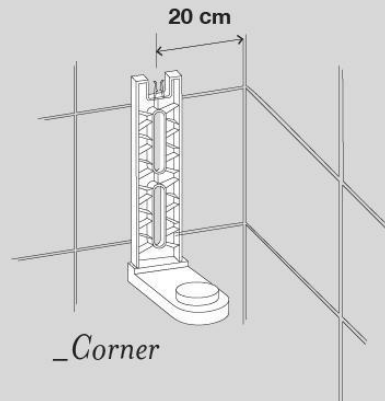
pure and minimal design,
enhances the appearance of the dispenser bottle



_Pump dispensing System

Installation requirements into the shower

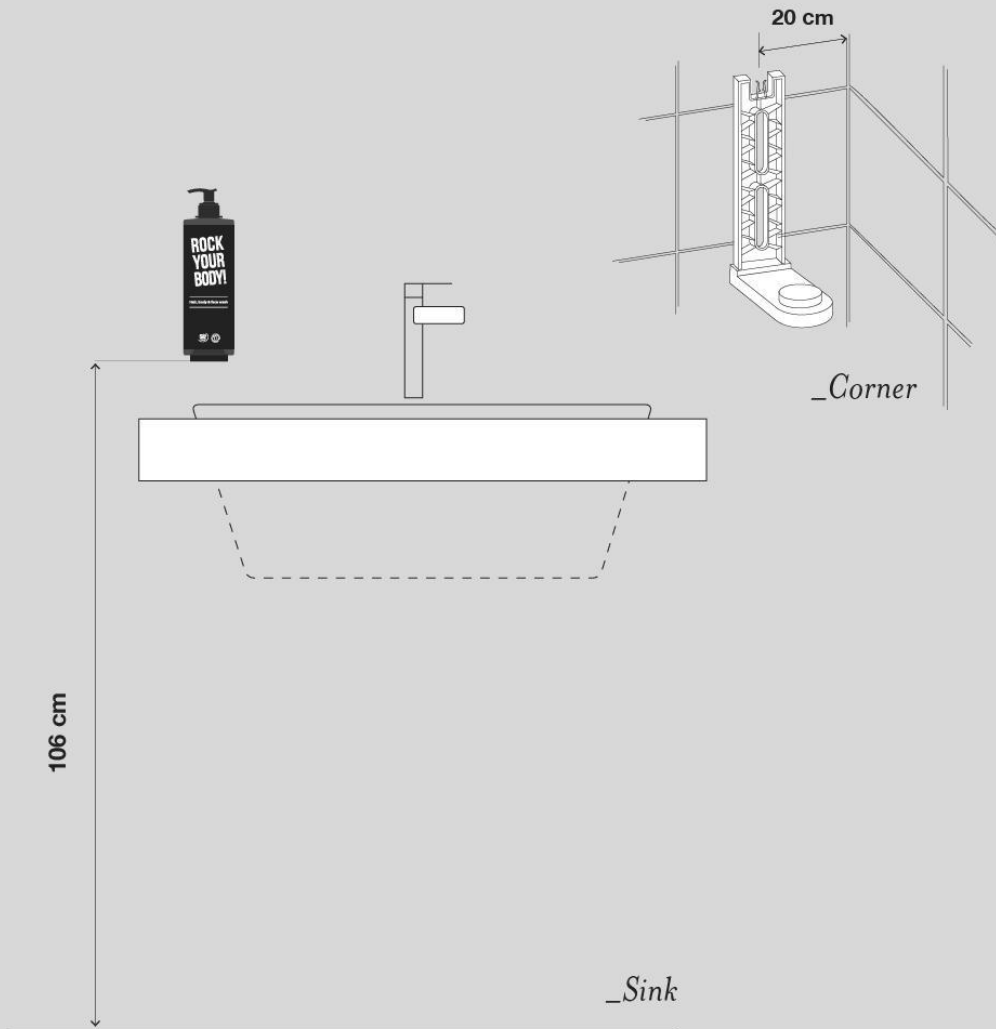
layout suggested for the readability of the information on the sides



for the installation of two adjacent pieces look how to use the template in the installation slide

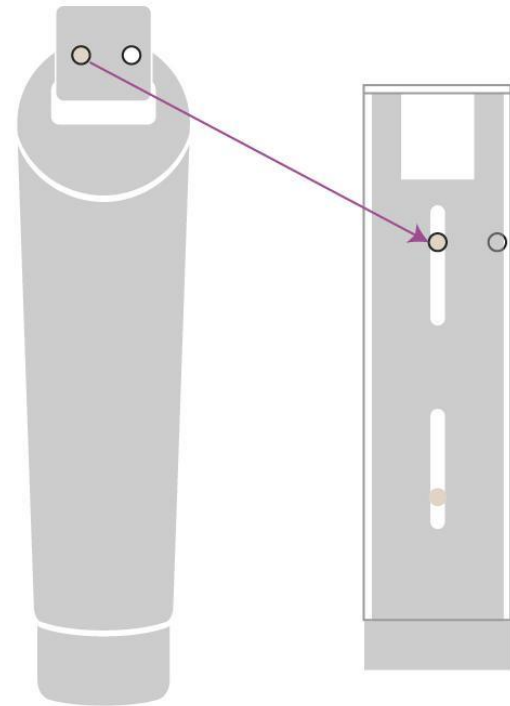
_Pump dispensing System

Installation requirement for basin



From HMR to Pump Dispenser Holder

HMR existing holes

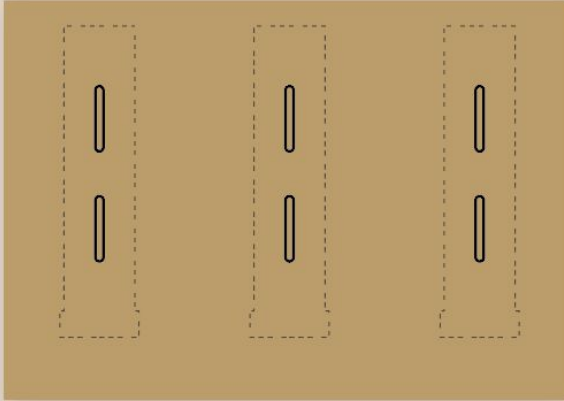


If using already existing holes, make sure that the plugs are solid enough. Plugs must be completely in the hole, overhanging parts must be cut off.

_Technical information

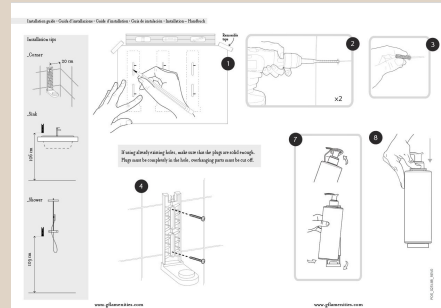
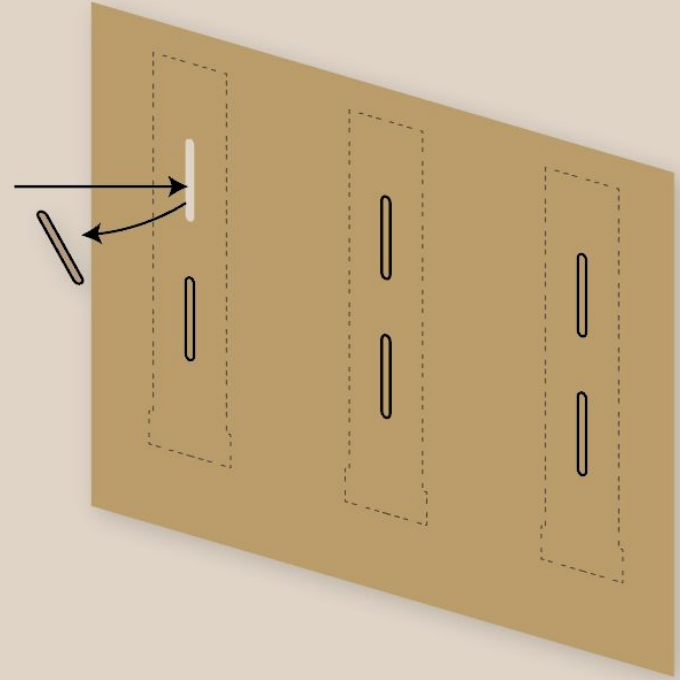
Dispenser Holder Installation Screw

in the product box you will find the templates for install 2 or 3 products side by side + installation guide leaflet



Screw installation template

For use the template
take off the pre-cut
parts

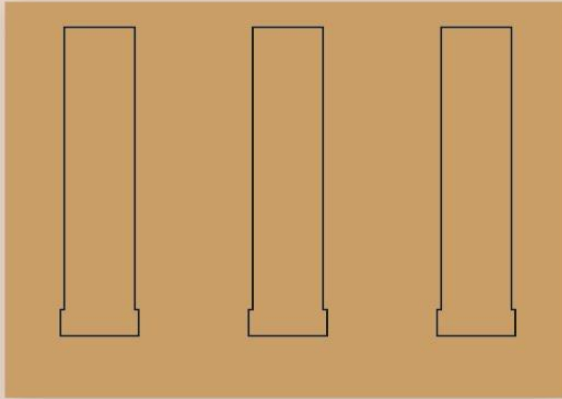


[Screw installation guide leaflet PDF](#)

_Technical information

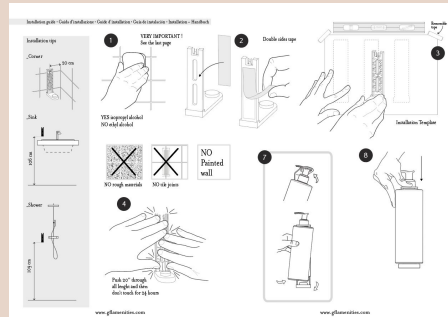
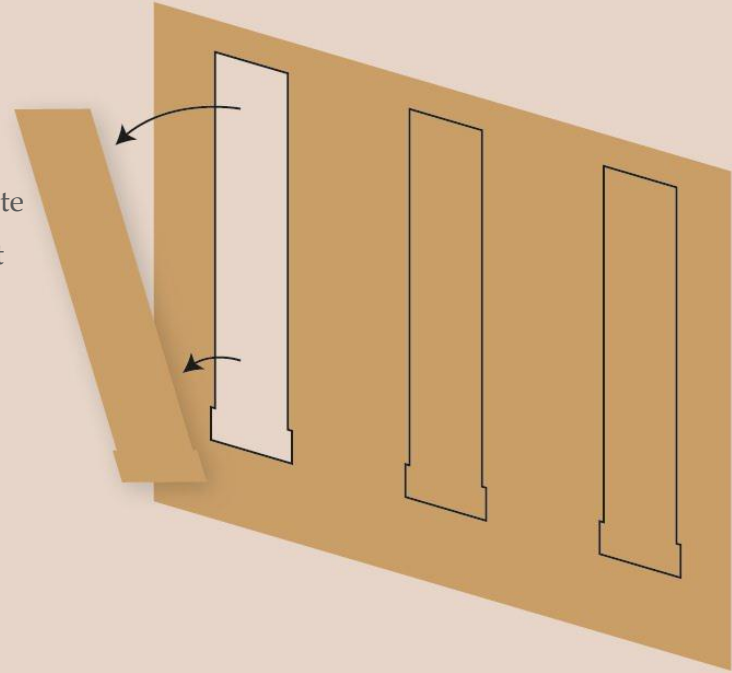
Dispenser Holder Installation Double Sided

in the product box you will find the templates for install 2 or 3 products side by side + installation guide leaflet



Double Sided installation template

For use the template
take off the pre-cut
parts



[Double Sided installation guide leaflet PDF](#)



gfl

SKIN CARE

GFL sa
via Sorengo 1
(CH) 6900 Lugano
T. +41(0)91 9607500
F +41(091) 9607599
www.gfl.eu
info@gfl.eu

©GFL 2017
The contents of this
document are protected by
copyright. Any use without
previous approval by
GFL SA is strictly
prohibited.