

Anatomy



The organism as a whole

- There are three chief parts of the human body, the head, the trunk and the limbs. The trunk is divided into two large cavities by the diaphragm. The chest is the upper of these cavities, the belly or abdomen – the lower. The organism is a single system. In a complex organism cells and intercellular substance form tissues, tissues make up organs and organs unite in systems. All the cells, tissues, organs and systems of organs are closely interconnected and affect each other.

Cardiovascular System Outline

Components



Heart



Blood Vessels



Blood

Heart

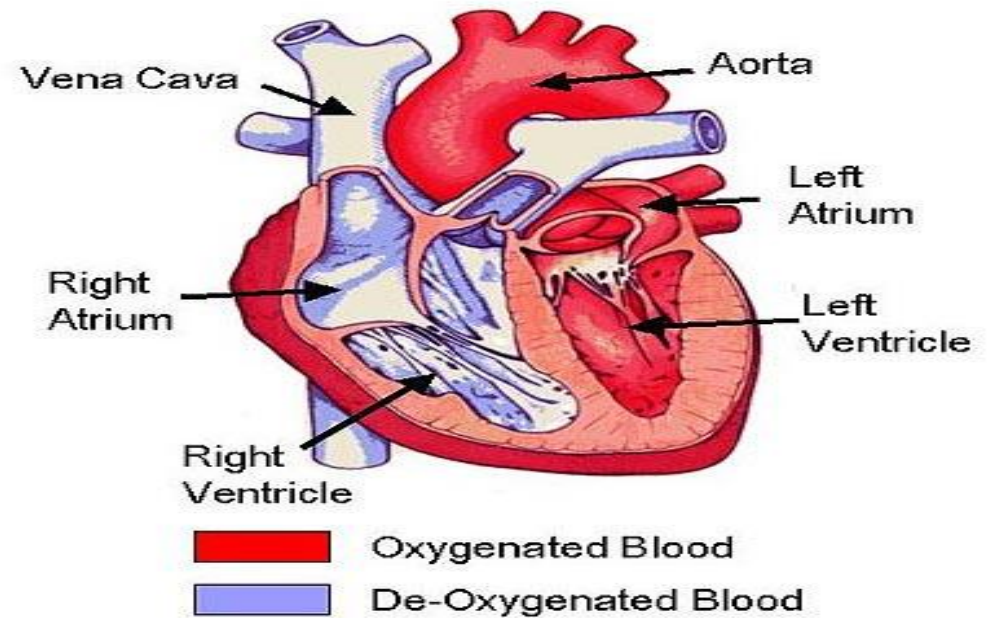
chest

hollow
muscular
organ

four
chambers

two cavities:
left/right

The Human Heart



Blood Vessels

 hollow tubes, of 3 types

Arteries

**very muscular and elastic;
carry blood away from the
heart to other body parts**

Veins

**thinner than arteries;
carry blood towards the
heart from other body
parts**

Capillaries

**microscopic blood vessels;
exchange of nutrients
with tissues take place**

Blood

special type of body tissue; liquid form

blood cells

components

plasma

platelets

leukocytes

erythrocytes

