



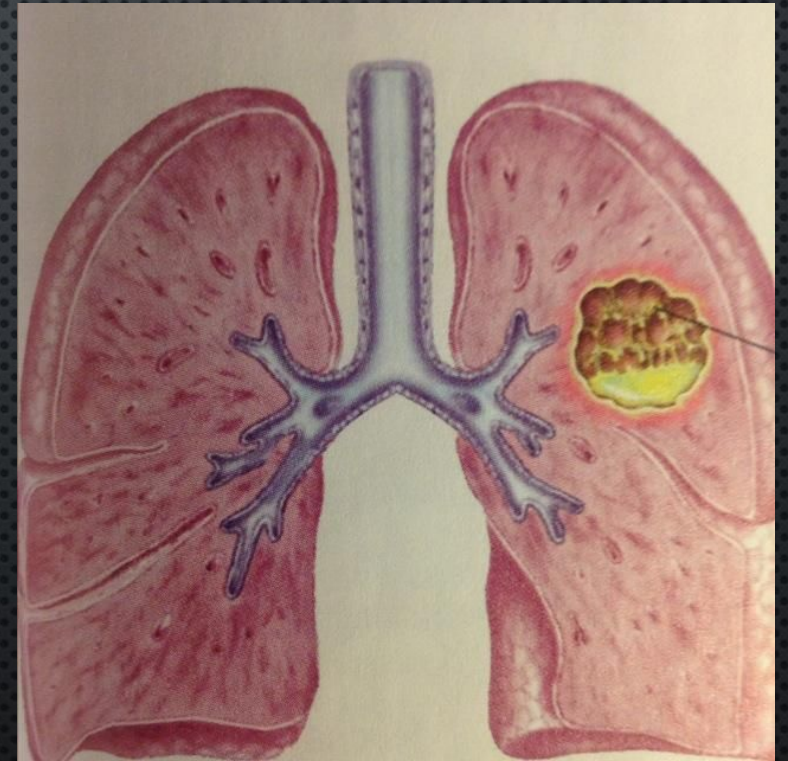
Karaganda State Medical
University
The chair of foreign languages

Topic: Lung abscess. Будущие и будущие в прошлом
времена страдательного залога. Сравнение
времен действительного и страдательного залогов

Prepared by SERYOGINA A.,
Group 2-065, “general medicine”
Checked teacher: T.G.DASHKINA

LUNG ABSCESS

- A LUNG ABSCESS IS A BACTERIAL INFECTION THAT OCCURS IN THE LUNG TISSUE. THE INFECTION CAUSES TISSUE TO DIE, AND PUS COLLECTS IN THAT SPACE. A LUNG ABSCESS CAN BE CHALLENGING TO TREAT. THIS CONDITION CAN BE LIFE THREATENING.



CAUSES

- LUNG ABSCESSSES CAN BE CLASSIFIED AS PRIMARY OR SECONDARY. THEY DEVELOP FROM DIFFERENT STRAINS OF BACTERIA AND HAVE DIFFERENT CAUSES.
- PRIMARY ABSCESSSES OFTEN DEVELOP FROM LUNG INFECTIONS, SUCH AS PNEUMONIA. SECONDARY ABSCESSSES OFTEN DEVELOP BECAUSE OF OTHER ISSUES, SUCH AS OBSTRUCTIONS, ABNORMALITIES OF THE LUNGS, FOREIGN MATERIALS, OR OTHER INFECTIONS.
- ASPIRATING FOREIGN MATTER WHILE SEDATED OR UNCONSCIOUS, EITHER THROUGH INTOXICATION OR ANESTHESIA, CAN ALSO CAUSE A LUNG ABSCESS. THE INHALED MATERIAL OFTEN COMES FROM AN INFECTION IN THE MOUTH OR RESPIRATORY TRACT OR STOMACH.

SYMPTOMS OF A LUNG ABSCESS



- THE MOST NOTICEABLE SYMPTOM OF A LUNG ABSCESS IS A PRODUCTIVE COUGH. THE CONTENTS THAT ARE COUGHED UP MAY BE BLOODY OR PUS-LIKE, WITH A FOUL ODOR.
- OTHER SYMPTOMS INCLUDE BAD BREATH, FEVER WITH CHILLS, CHEST PAIN, AND SHORTNESS OF BREATH. SWEATING OR NIGHT SWEATS, WEIGHT LOSS, AND FATIGUE CAN ALSO INDICATE A LUNG ABSCESS.

- PATIENTS WITH LUNG ABSCESSSES MAY HAVE LOW-GRADE FEVER IN ANAEROBIC INFECTIONS AND TEMPERATURES HIGHER THAN 38.5°C IN OTHER INFECTIONS.
- GENERALLY, PATIENTS WITH IN LUNG ABSCESS HAVE EVIDENCE OF GINGIVITIS AND/OR PERIODONTAL DISEASE.
- CLINICAL FINDINGS OF CONCOMITANT CONSOLIDATION MAY BE PRESENT (EG, DECREASED BREATH SOUNDS, DULLNESS TO PERCUSSION, BRONCHIAL BREATH SOUNDS, COARSE INSPIRATORY CRACKLES).
- THE AMPHORIC OR CAVERNOUS BREATH SOUNDS ARE ONLY RARELY ELICITED IN MODERN PRACTICE.
- EVIDENCE OF PLEURAL FRICTION RUB AND SIGNS OF ASSOCIATED PLEURAL EFFUSION, EMPYEMA, AND PYOPNEUMOTHORAX MAY BE PRESENT. SIGNS INCLUDE DULLNESS TO PERCUSSION, CONTRALATERAL SHIFT OF THE MEDIASTINUM, AND ABSENT BREATH SOUNDS OVER THE EFFUSION.
- DIGITAL CLUBBING MAY DEVELOP RAPIDLY.

MEDICAL CARE

- THE TREATMENT OF LUNG ABSCESS IS GUIDED BY THE AVAILABLE MICROBIOLOGY WITH CONSIDERATION OF THE UNDERLYING OR ASSOCIATED CONDITIONS. NO TREATMENT RECOMMENDATION HAS BEEN ISSUED BY MAJOR SOCIETIES SPECIFICALLY FOR LUNG ABSCESS. A GUIDELINE SUMMARY FROM THE INFECTIOUS DISEASES SOCIETY OF AMERICA, PRACTICE GUIDELINES FOR OUTPATIENT PARENTERAL ANTIMICROBIAL THERAPY, IS AVAILABLE. SOME CLINICAL TRIALS REFERRED TO BELOW HAVE INCLUDED PATIENTS WITH ASPIRATION PNEUMONIA WITH OR WITHOUT LUNG ABSCESS.

PROGNOSIS

- THE PROGNOSIS FOR LUNG ABSCESS FOLLOWING ANTIBIOTIC TREATMENT IS GENERALLY FAVORABLE. OVER 90% OF LUNG ABSCESSES ARE CURED WITH MEDICAL MANAGEMENT ALONE, UNLESS CAUSED BY BRONCHIAL OBSTRUCTION SECONDARY TO CARCINOMA.

БУДУЩИЕ И БУДУЩИЕ В ПРОШЛОМ ВРЕМЕНА СТРАДАТЕЛЬНОГО ЗАЛОГА

- СТРАДАТЕЛЬНЫЙ (ПАССИВНЫЙ) ЗАЛОГ УПОТРЕБЛЯЕТСЯ, КОГДА ДЕЙСТВИЕ НАПРАВЛЕНО НА ПРЕДМЕТ, ЯВЛЯЮЩИЙСЯ ГЛАВНЫМ СЛОВОМ В ПРЕДЛОЖЕНИИ. ЭТО ЗНАЧИТ, ЧТО ДЕЙСТВИЕ ПРОИЗВОДИТ НЕ САМ ОБЪЕКТ, А НАОБОРОТ, ЭТО ДЕЙСТВИЕ ПРОИЗВОДИТСЯ НАД ОБЪЕКТОМ.
- В БУДУЩЕМ НЕОПРЕДЕЛЕННОМ ВРЕМЕНИ СТРАДАТЕЛЬНЫЙ ЗАЛОГ УКАЗЫВАЕТ НА ТО, ЧТО ДЕЙСТВИЕ БУДЕТ ПРОИЗВОДИТЬСЯ НАД ОБЪЕКТОМ. СТРАДАТЕЛЬНЫЙ ЗАЛОГ В БУДУЩЕМ НЕОПРЕДЕЛЁННОМ ВРЕМЕНИ (FUTURE INDEFINITE PASSIVE) ОБРАЗУЕТСЯ С ПОМОЩЬЮ ВСПОМОГАТЕЛЬНЫХ ГЛАГОЛОВ WILL BE + 3-я ФОРМА СМЫСЛОВОГО ГЛАГОЛА (ПРИЧАСТИЕ II).

ВСЕ ВРЕМЕННЫЕ ФОРМЫ СТРАДАТЕЛЬНОГО ЗАЛОГА В АНГЛИЙСКОМ ЯЗЫКЕ ОБРАЗУЮТСЯ ИЗ СООТВЕТСТВУЮЩИХ ВРЕМЕН ВСПОМОГАТЕЛЬНОГО ГЛАГОЛА TO BE И ПРИЧАСТИЯ ПРОШЕДШЕГО ВРЕМЕНИ ОСНОВНОГО ГЛАГОЛА.

- А) **PRESENT (PAST, FUTURE) INDEFINITE PASSIVE** ОБРАЗУЕТСЯ ПРИ ПОМОЩИ ВСПОМОГАТЕЛЬНОГО ГЛАГОЛА TO BE В PRESENT (PAST, FUTURE) INDEFINITE И ПРИЧАСТИЯ ПРОШЕДШЕГО ВРЕМЕНИ (PAST PARTICIPLE) ОСНОВНОГО ГЛАГОЛА.
- PRESENT INDEFINITE PASSIVE:
- I AM EXAMINED.
HE (SHE, IT) IS EXAMINED.
WE (YOU, THEY) ARE EXAMINED.

Во всех случаях подчёркивается факт выполнения/невыполнения действия в будущем.

б) PRESENT (PAST) CONTINUOUS PASSIVE ОБРАЗУЕТСЯ ПРИ ПОМОЩИ ВСПОМОГАТЕЛЬНОГО ГЛАГОЛА TO BE В PRESENT (PAST) CONTINUOUS И ПРИЧАСТИЯ ПРОШЕДШЕГО ВРЕМЕНИ ОСНОВНОГО ГЛАГОЛА. FUTURE CONTINUOUS В СТРАДАТЕЛЬНОМ ЗАЛОГЕ НЕ УПОТРЕБЛЯЕТСЯ.

- PRESENT CONTINUOUS PASSIVE:

- I AM BEING EXAMINED.

- HE (SHE, IT) IS BEING EXAMINED.

- WE (YOU, THEY) ARE BEING EXAMINED.

в) PRESENT (PAST, FUTURE) PERFECT PASSIVE ОБРАЗУЮТСЯ ПРИ ПОМОЩИ ВСПОМОГАТЕЛЬНОГО ГЛАГОЛА TO BE В PRESENT (PAST, FUTURE) PERFECT И ПРИЧАСТИЯ ПРОШЕДШЕГО ВРЕМЕНИ ОСНОВНОГО ГЛАГОЛА.

- PRESENT PERFECT PASSIVE:

- I (WE, YOU, THEY) HAVE BEEN EXAMINED.

- HE (SHE, IT) HAS BEEN EXAMINED.

г) FUTURE INDEFINITE-IN-THE-PAST PASSIVE и FUTURE PERFECT-IN-PAST PASSIVE ОБРАЗУЕТСЯ ТАК ЖЕ, КАК И FUTURE INDEFINITE PASSIVE и FUTURE PERFECT PASSIVE, НО ВМЕСТО ВСПОМОГАТЕЛЬНЫХ ГЛАГОЛОВ SHALL / WILL УПОТРЕБЛЯЮТСЯ СООТВЕТСТВЕННО SHOULD / WOULD.

FUTURE INDEFINITE-IN-THE-PAST PASSIVE:

- I (WE) SHOULD BE EXAMINED.
- HE (SHE, IT, YOU, THEY) WOULD BE EXAMINED.

FUTURE PERFECT-IN-PAST PASSIVE:

- I (WE) SHOULD HAVE BEEN EXAMINED.
- HE (SHE, IT, YOU, THEY) WOULD HAVE BEEN EXAMINED.
- ВРЕМЕННЫЕ ФОРМЫ ГРУППЫ PERFECT CONTINUOUS В СТРАДАТЕЛЬНОМ ЗАЛОГЕ НЕ УПОТРЕБЛЯЮТСЯ.

Thank you for attention!