

Talking about ...

ENGLAND ?





Those are
the **British
Isles!**

That's
Britain!

That's the
UK!

That's **Great Britain!**

That's
England!

**Let's see what they
are talking about**

These are the British Isles



Atlantic
Ocean

EUROPE



There are two big islands



This is Great Britain

It's the biggest
island of the
British Isles.



This is Ireland

It is also known as the **Emerald Isle** because of its beautiful green countryside.



There are two
independent states
in the British Isles:



The United Kingdom

The 
Republic
of Ireland



Ireland is divided
into two parts:



Northern Ireland

It's part of the United
Kingdom.

It's also
called **EIRE**.



The Republic of Ireland

It's NOT a part of the
United Kingdom.

This is the **United Kingdom**



Royal coat of arms

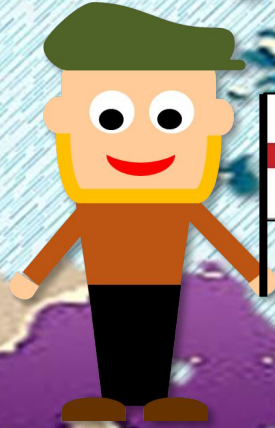
It is also called
the **UK** or **Britain**.
People from the
UK are **British**.



LONDON



The
**United
Kingdom**



**Northern
Ireland**



Scotland



Wales



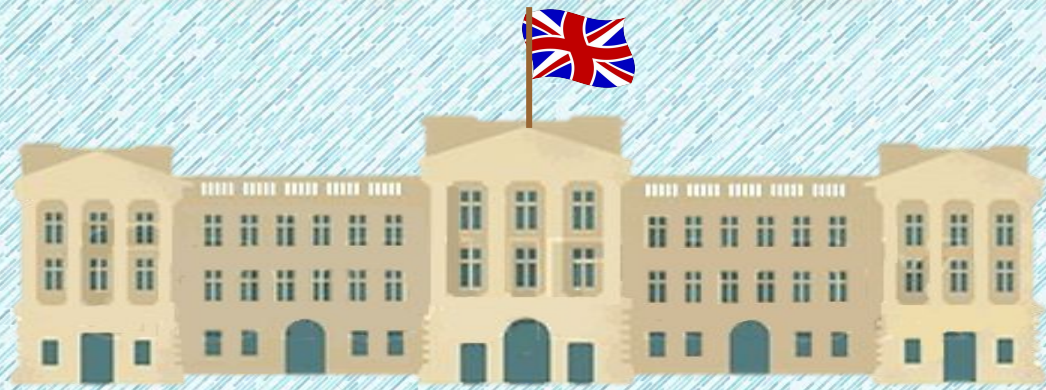
England

It consists
of four countries

The
**United
Kingdom**



Houses
of Parliament



Buckingham Palace





England



The rose,
symbol of England

I am **British** and
I am **English**

It's the biggest and the most populated
country of the United Kingdom



LONDON





Scotland

EDINBURGH



The thistle,
symbol of Scotland

I'm **Scottish** and
I'm a **British** citizen,
but I'm not English.





Wales



The daffodil,
symbol of Wales

I am **Welsh** and
I'm a **British**
citizen, but I'm
not English.



CARDIFF





Northern Ireland

BELFAST



The shamrock,
symbol of Ireland

I am **Northern Irish**
and I'm a **British**
citizen, but I'm not
English.



The Republic of Ireland



The shamrock,
symbol of Ireland

I am **Irish** but
I'm not British
or English.



 DUBLIN

The Union Jack

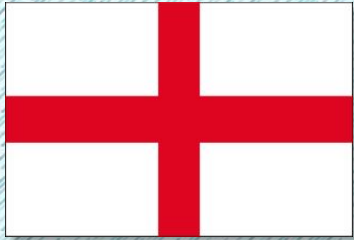


This is not the
flag of England



This is the **“UNION JACK”**, the
flag of the **UNITED KINGDOM.**

The Union Jack

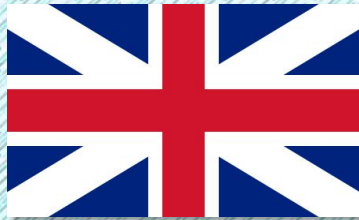


ENGLAND

+



SCOTLAND



UNION FLAG
(1606)

+



IRELAND



UNION JACK (1801)

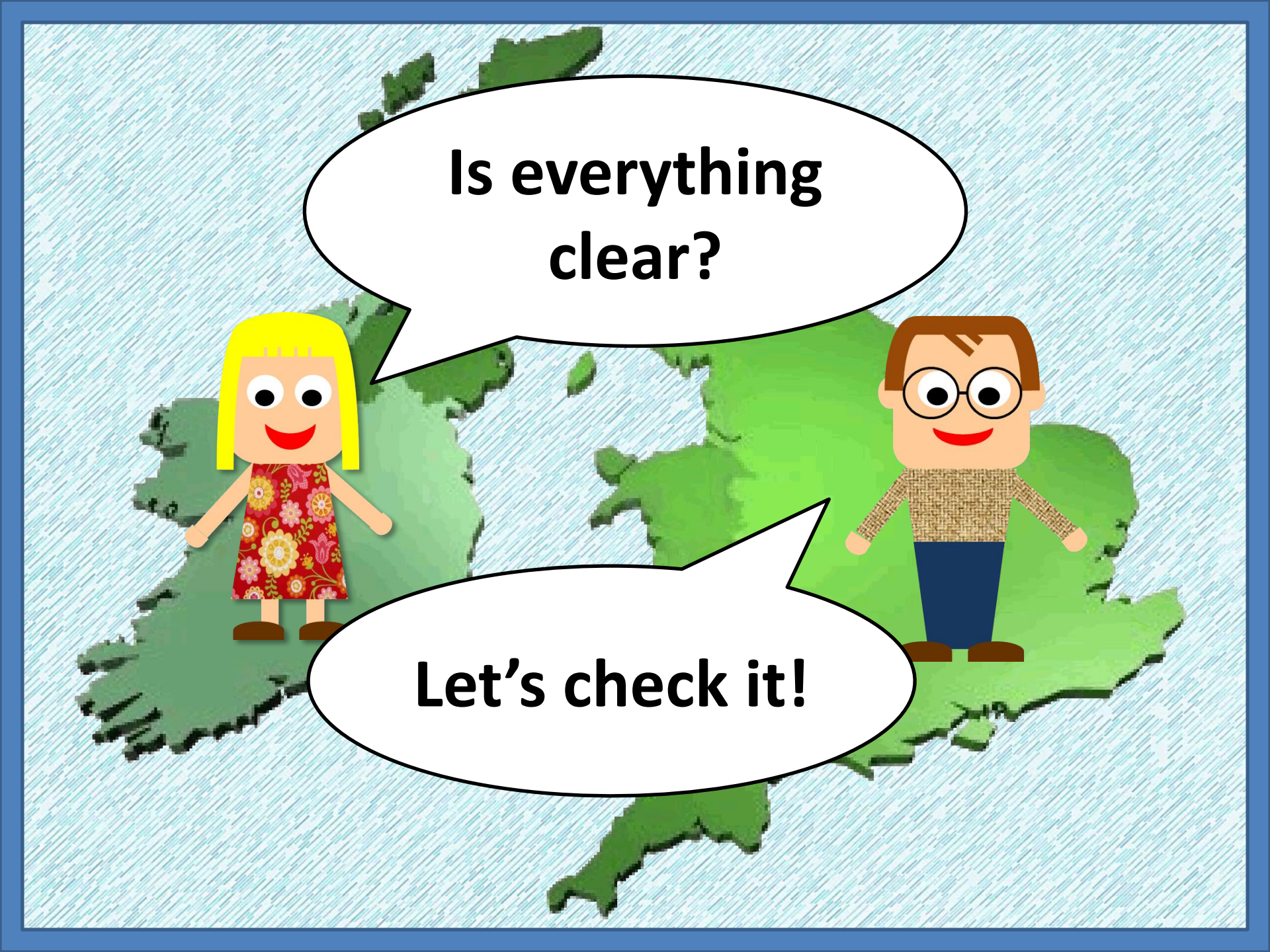
It's the combination of the flags of England, Scotland and Ireland



LONDON

London is the capital of England and the United Kingdom





**Is everything
clear?**

Let's check it!

TRUE OR FALSE?

True False

1. England is the biggest island of the British Isles.	T	F
2. There are four countries in the United Kingdom.	T	F
3. All the people from the United Kingdom are English.	T	F
4. The Republic of Ireland is part of the UK.	T	F
5. Northern Ireland is an independent country.	T	F
6. People from Wales are English.	T	F
7. People from Scotland are British.	T	F
8. The "Union Jack" is the flag of England.	T	F
9. The British Isles and the UK are the same.	T	F
10. Britain is a republic.	T	F



IS IT A QUEEN?!



QUEEN ELIZABETH II

BRITISH ROYAL FAMILY



BRITISH CELEBRITIES



QUEEN



BEATLES

GOODBYE!!

