



# New York City

**New York City** is a city in the southern end of the state of New York, and is the most populous city in the United States of America. New York City is a global economic center, with its business, finance, trading, law, and media organizations influential worldwide. The city is also an important cultural center, with many museums, galleries, and performance venues. Home of the United Nations, the city is a hub for international diplomacy. With over 8.2 million residents within an area of 322 square miles (830 km<sup>2</sup>), New York City has the highest population density of major cities in the United States. The New York metropolitan area, with a population of 18.8 million, ranks among the largest urban areas in the world.

Manhattan



Bronx



Staten Island



Brooklyn



Queens





New York City is comprised of five boroughs, an unusual form of government used to administer the five constituent counties that make up the city.

1. Manhattan,
2. Brooklyn
3. Queens
4. Bronx
5. Staten Island

# Wall Street

**Wall Street** is the major financial center of the U. S. and symbolizes the money market and financiers of the U.S. Wall Street was called so because of a wall which extended along the street in Dutch times. It was built about 1650 from river to river (the Hudson and the East River) to protect the small colony living south of this street from attacks by Indians. Later the wall was removed, but the name remained.



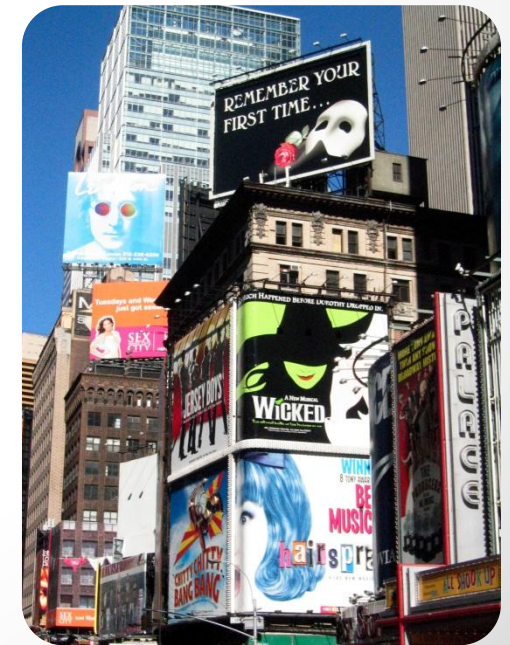
# The Brooklyn Bridge

The Brooklyn Bridge is one of the oldest suspension bridges in the United States, stretches 1825 m over the East River connecting the Manhattan and Brooklyn. On completion, it was the largest suspension bridge in the world and the first steel-wire suspension bridge. The bridge cost \$15.1 million to build and approximately 27 people died during its construction. A week after the opening, on May 30 1883 a rumor that the Bridge was going to break down caused a stampede which crushed and then killed twelve people.



# Times Square

**Times Square** is at the junction of Broadway and Seventh Avenue. Times Square consists of the blocks between Sixth and Eighth Avenues from east to west, and West 40th and West 53rd Streets from south to north, making up the western part of the commercial area of Midtown Manhattan. Smaller than Red Square in Moscow or Trafalgar Square in London, Times Square, however, has achieved the status of an iconic world landmark and has become a symbol of its home city. Times Square is usually defined by its animated, digital advertisements.



# Empire State Building



The Empire State Building rises to 381 m at the 102nd floor, and its full structural height (including broadcast antenna) reaches 443 m. The building has 85 stories of commercial and office space and an indoor and outdoor observation deck on the 86th floor. The remaining 16 stories represent the spire, which is capped by a 102nd floor observatory, and atop the spire is an antenna topped off with a lightning rod. The Empire State Building is the first building to have more than 100 floors. It has 6,500 windows, 73 elevators and there are 1,860 steps from street level to the 102nd floor. It has a total floor area of approximately 254,000 m<sup>2</sup>.



# Rockefeller Center

Rockefeller Center is "a city within a city". It is the largest private building project ever undertaken in modern times. It is a complex of 19 commercial buildings with its own restaurants, stores, theatres, post-offices. In winter its plaza is transformed from an outdoor restaurant to an ice-skating pond Radio City Music Hall, where some of the nation's most popular movies have their first showing along with a spectacular stage show, is one of New York's greatest attractions.





# Central Park

Central Park is a large public park (3.41 km). With about twenty-five million visitors annually, Central Park is the most visited city park in the United States, and its appearance in many movies and television shows has made it among the most famous city parks in the world. Central Park contains several artificial lakes, extensive walking tracks, two ice-skating rinks, a wildlife sanctuary, and grassy areas and playgrounds for children. The park is a popular oasis for migrating birds.

