

UNDER THE MOUNTAIN THERE IS A HOLE,
AND IN THE HOLE - A DETACHMENT,
WARRIORS ARE BOLD,
SMOOTH AND WHITE.

What are they?

THEY APPEAR 3 TIMES IN LIFE.
IN THE FIRST TWO TIMES - FOR FREE,
AND FOR THE THIRD YOU HAVE TO PAY.

MODULE 6



The goal is to :

- get ready to discuss the question
- and create the quiz on the topic

To reach our goal we need:

- To learn new vocabulary and information on the topic
- To revise types of questions

Guess the meaning of the idioms

Tooth-idioms



By the skin of one's teeth - с трудом, едва

To have a sweet tooth - любить сладкое

Tooth and nail - изо всех сил

enamel



calcium

Toothpaste with
fluoride

Milk teeth

Permanent teeth

Tooth decay

Acid bacteria

Read the words, match them with their translations

Постоянные
зубы

Молочные зубы

кислотная
бактерия

эмаль

кальций

Гниение зубов

Зубная паста с
фтором

PARTS OF A TOOTH



enamel

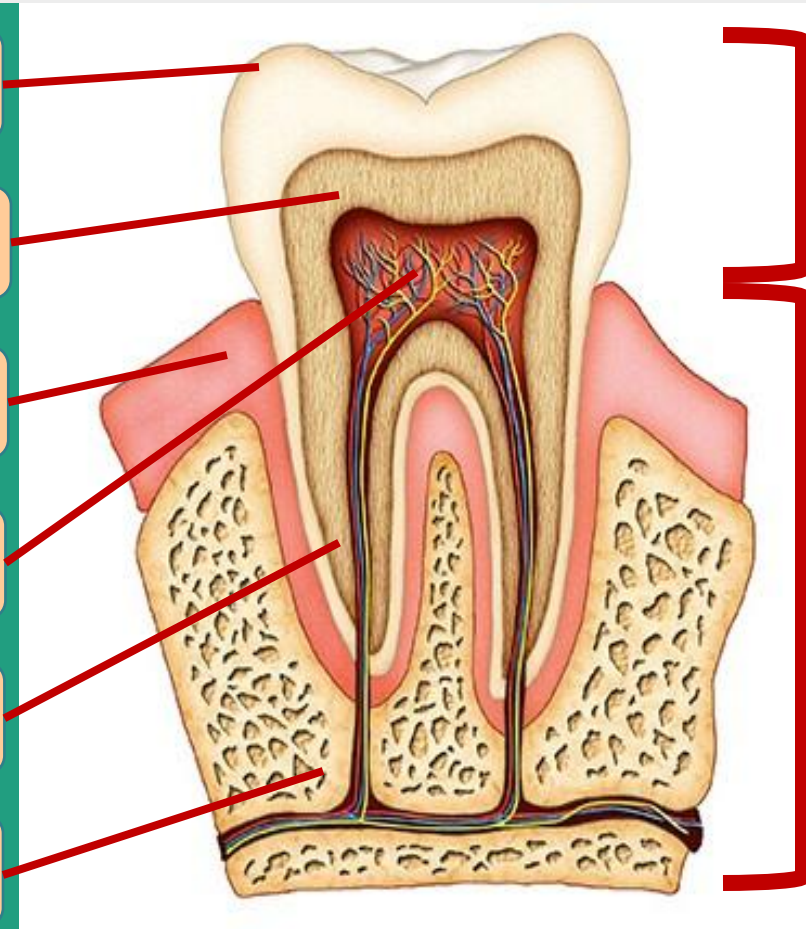
dentin

gum

pulp

cementum

jaw bone

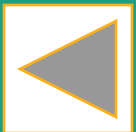


crown

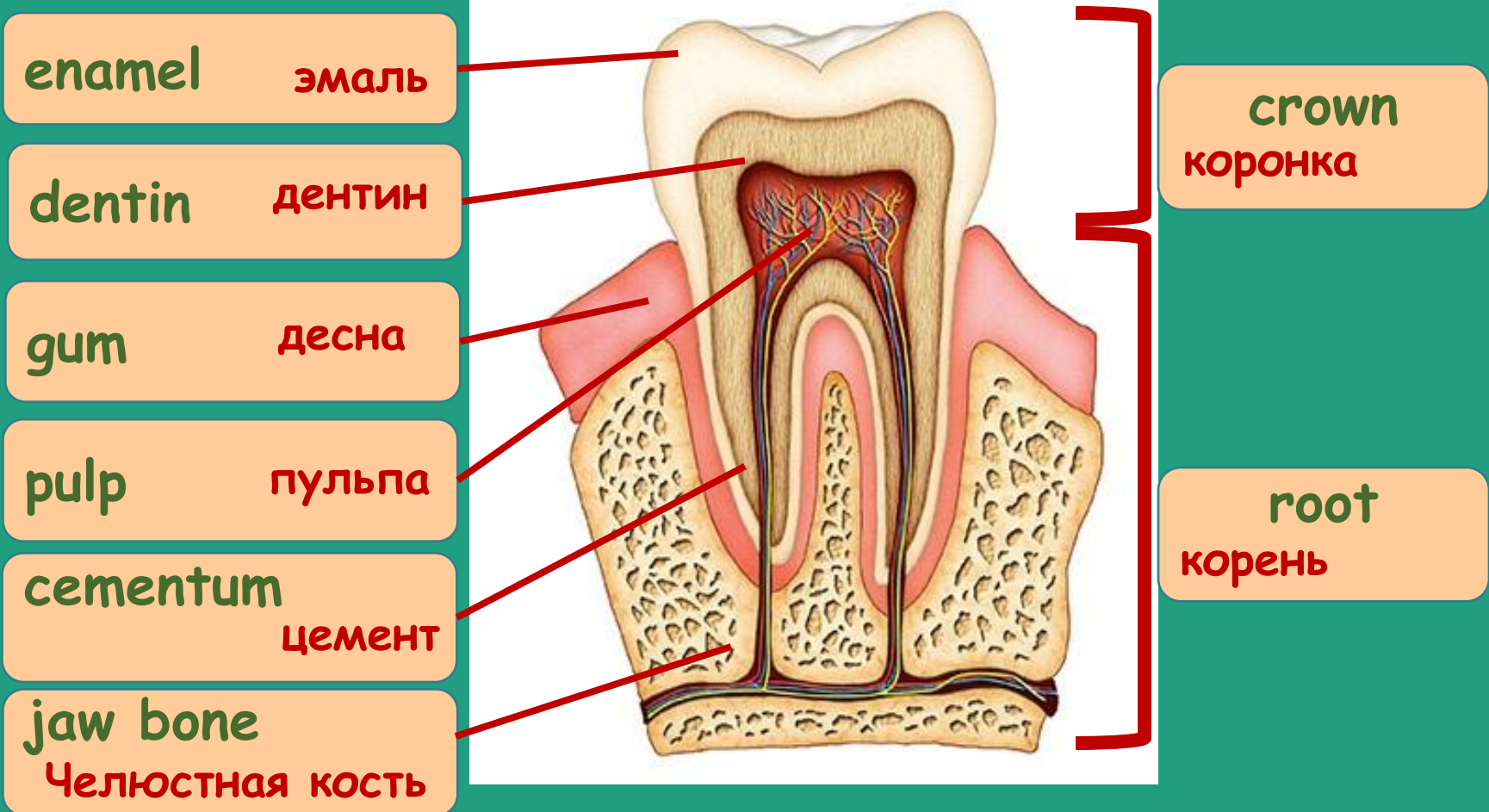
root



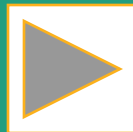
What are the words used to label the diagram in your language?



PARTS OF A TOOTH



What are the words used to label the diagram in your language?



Guess the words in bold from the text. Click on the phrase to check yourself, translate

- ***fastens***
- ***outer***
- ***substance***
- ***layer***
- ***blood vessels***
- ***nerve***
- ***securely***

прикреплять

внешний

субстанция

слой

Кровеносный сосуд

нерв

надёжно

the outside of

the narrow tubes that
blood flows through

material

tightly, safely

keeps something in place

long thin fibres that send
messages to the brain/body

level, part

Ex.2b,p.116

Use the words in the diagram to complete the gaps



A tooth has two main parts. The 1).....*crown*.....is the part you can see and the 2).....*root*..... is the unseen part that is below the 3).....*gum*.....and fastens the tooth in the 4).....*jaw bone*.....

The outer part of the tooth and the hardest substance in the body is 5).....*enamel*..... Underneath this is a layer of 6).....*dentin*.....which is softer than enamel but similar to bone. In the middle of the tooth is the 7).....*pulp*..... . This contains cells, blood vessels and the nerve of the tooth. The pulp is protected by a layer called 8).....*cementum*..... which covers the root u and keeps the tooth securely attached in the gum.

Guess the words in bold from the text

- **bite:**
- **grasp:**
- **tear:**
- **chew:**
- **grind:**

прикреплять

внешний

субстанция

Кровеносный сосуд

надёжно

hold firmly

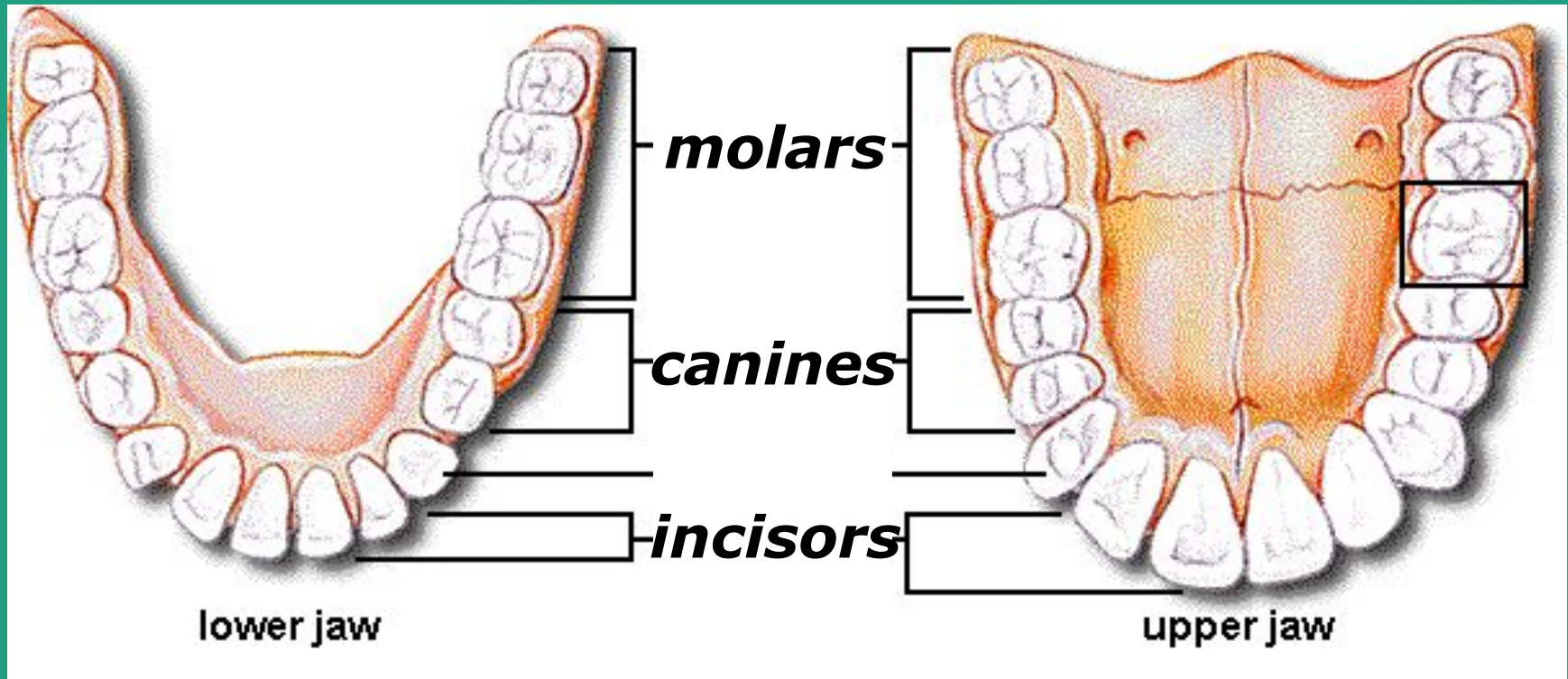
crush

pull into pieces

use teeth to cut into sth

use teeth to break up food
in your mouth

How many types of teeth have you got?



c **molars**

b **canines**

a **incisors**

/ˈmoʊləʁ/ (n) коренной зуб

/ˈkeɪnɪn/ (n) клык

/ˈɪnsaɪzəʁ/ (n) резец

What should you do to have good teeth?

- brush your teeth twice a day (in the morning & in the evening)
- change your toothbrush once or twice a month
- - visit a dentist regularly
- eat more fruit and vegetables
- - don't eat fizzy drinks & sugar
- don't have a snack

H\W

- new words
- create your own quiz and be ready to do your classmate's

