

Karaganda State Medical University  
The chair of foreign languages

# Lobular Pneumonia

## Modal verb



PREPARED BY Sailauov B.S,  
GROUP 2067, “GENERAL  
MEDICINE”

UNDER THE SUPERVISION OF THE  
FOREIGN LANGUAGES  
DEPARTMENT TEACHER  
T.G.DASHKINA

Karaganda 2016

# Lobular Pneumonia

There are two main types of acute bacterial pneumonia :  
bronchopneumonia (with lobular topography) and lobar pneumonia (lobar topography).

**Bronchopneumonia (Lobular pneumonia)** is an acute exudative suppurative inflammation of the lungs characterized by foci of consolidation surrounded by normal parenchyma. Generally, it is produced by bacteria : staphylococcus, streptococcus, Haemophilus influenzae, proteus, Escherichia coli.

staphylococcus



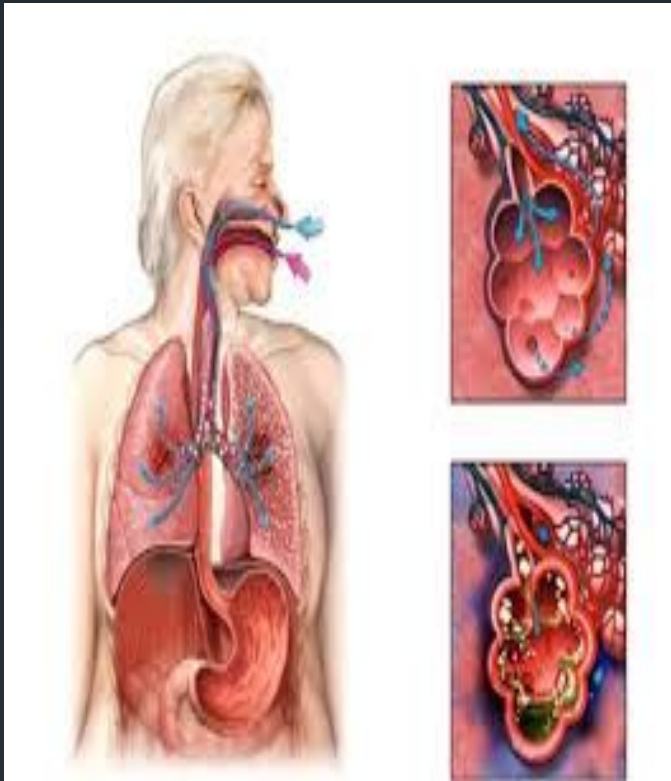
streptococcus



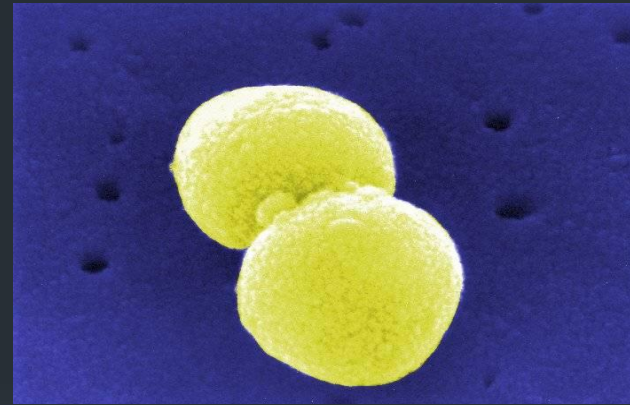
# Microscopy

Microscopy : foci of inflammatory condensation centered by a bronchiole with acute bronchiolitis (suppurative exudate rich in neutrophils in the lumen, foci of ulceration of the epithelium and parietal inflammation). The alveolar lumens surrounding the bronchia are filled with neutrophils ("leukocytic alveolitis"). Capillaries in the alveolar walls show congestion. Inflammatory foci are separated by normal, aerated parenchyma.





Lobar pneumonia is an acute exudative inflammation of an entire pulmonary lobe, produced in 95 % of cases by *Streptococcus pneumoniae* (pneumococci).



If not treated, lobar pneumonia evolves in four stages. Common to all stages is the enlargement of the affected lobe with loss of its spongy appearance.

# Modal

**Modal verbs (can, could, must, should, ought to, may, might, will, would, shall) are modal auxiliary verbs that express ability, necessity, obligation, duty, request, permission, advice, desire, probability, possibility, etc. Modal verbs express the speaker's attitude to the action indicated by the main verb.**

## Example:

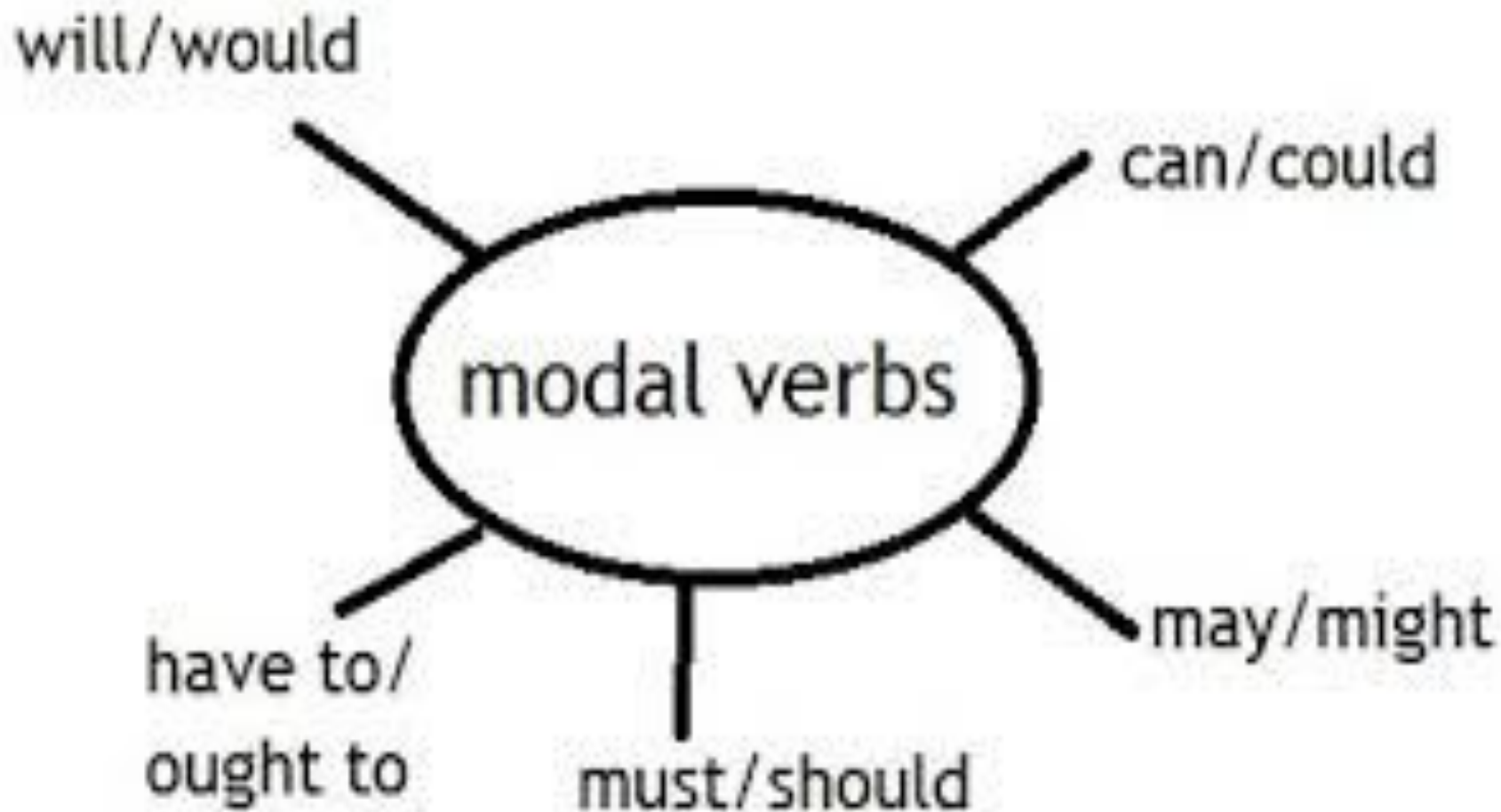
- **She can drive ( Она может водить машину)**
- **I must go ( я должен идти)**
- **You should call him (вам следует позвонить ему)**
- **You may stay here ( вы можете остаться здесь)**
- **I would like to see her (я хотел бы увидеть ее)**
- **He must be at the tennis club now (он, наверное, в теннисном клубе сейчас)**



# MODAL VERBS

- I **can** see
- You **can** see
- He **can** see
- She **can** see → **Can** she see?
- It **can** see            She **cannot/can't** see.
- We **can** see
- They **can** see
- The students **can** see

**"Can" is one of the most commonly used modal verbs in English. It can be used to express ability or opportunity, to request or offer permission, and to show possibility or impossibility.**




Pneumonia **can** develop gradually

The patient's breathing **can** become more frequent

Cyanosis **can be** associated with the accompanying bronchitis, decrease in the respiratory surface and occlusion of numerous bronchioles and alveoli.





Thank you for your  
attention!