



# Windows Server® 2012 Essentials

## Product Overview & Deployment Planning

Part 1 of 6



# Agenda

Introduction

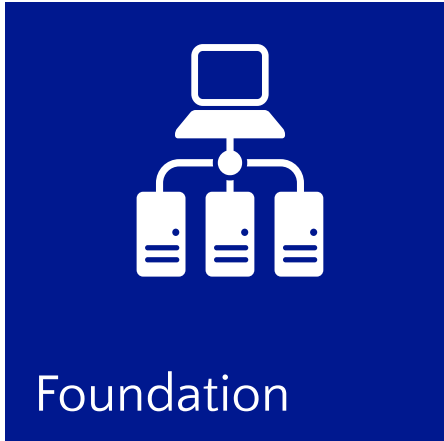
Features Overview

Planning and Deployment Scenarios

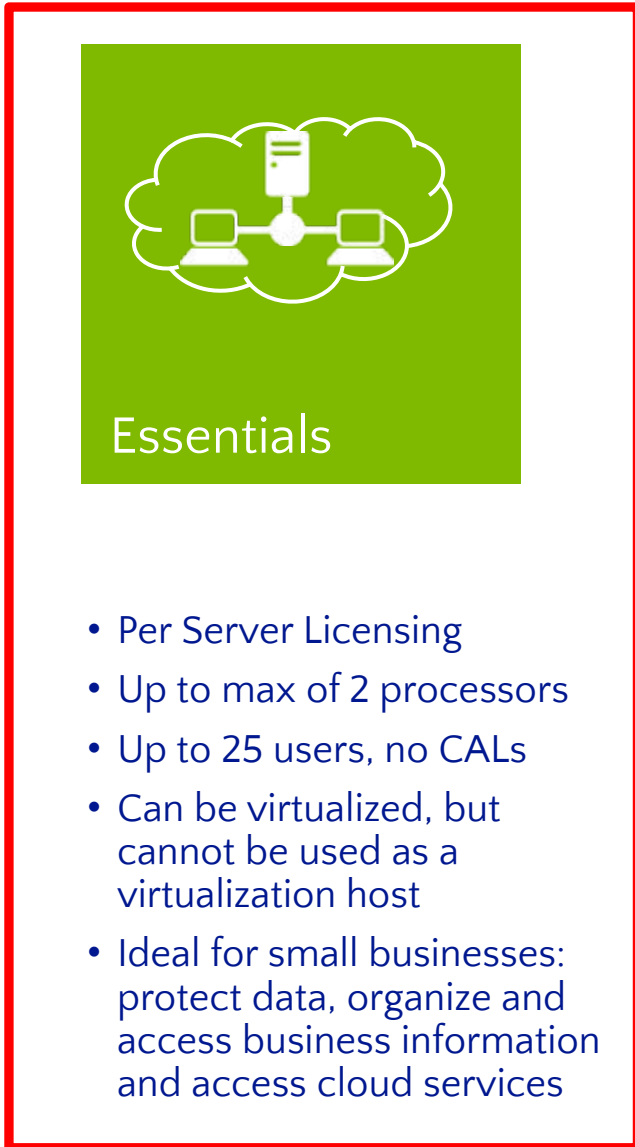
System Requirements

Resources

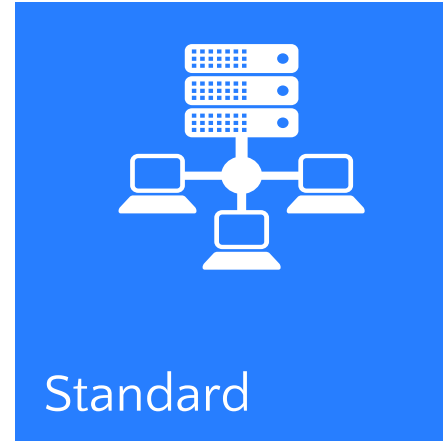
# Windows Server 2012 Editions



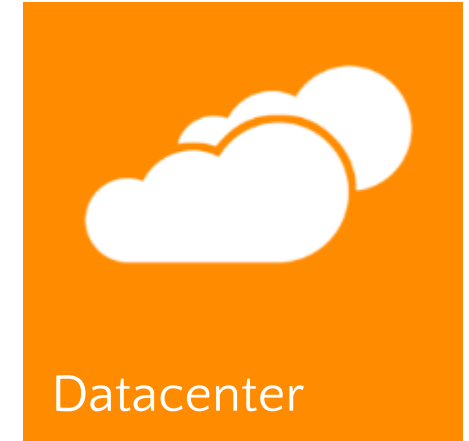
- Per Server Licensing
- Limited to 1 processor only
- Up to 15 users, no CALs
- Cannot be virtualized and cannot be used as a virtualization host
- Basic workloads for core IT capabilities: file sharing, printer sharing and remote access



- Per Server Licensing
- Up to max of 2 processors
- Up to 25 users, no CALs
- Can be virtualized, but cannot be used as a virtualization host
- Ideal for small businesses: protect data, organize and access business information and access cloud services



- Processor & CALs
- Up to 2 processors per license; no processor limit
- Virtual Use Rights: 2 Instances
- Unlimited users with CALs
- All server features including: continuous availability, storage, management, networking, identity and access (parity with Datacenter)



- Processor & CALs
- Up to 2 processors per license; no processor limit
- Unlimited Virtual Instances
- Unlimited users with CALs
- Full product features
- High Density Virtualization for private and hybrid cloud environments

# Windows Server 2012 Essentials

## Protect your data

**Simplified backups.** Enjoy peace of mind with daily, automatic backup.

**Built-in disaster recovery.** Microsoft's optional online backup service helps you safe.

**Centralized IT management.** Save time by managing your devices with the Dashboard.

## Promote a flexible work style

**Consistent productivity.** Quickly connect to the computers in your network.

**Easy connectivity.** Stay connected to the tools you use most.

**Increased security.** Stay productive by protecting your computers against security threats.

## Simplify your path to the cloud

**Business agility.** Increase productivity and collaborate with customers, vendors & partners.

**Flexible cloud solutions.** Enjoy the flexibility to choose the right solution for your needs.

**Powerful partnership.** Microsoft provides a variety of collaboration options.

# What Is Windows Server 2012 Essentials?



Windows Server 2012  
operating system

Active Directory, File & Print  
Server, Application Server,  
Networking, IIS, RDS, Backup



Turn Windows Server  
features into a solution

Automatically install roles and  
features, configured according  
to best practices for small  
businesses



Install unique capabilities  
for small business

Dashboard, Client PC Backup,  
Health Monitoring,  
Remote Web Access, Email  
Integration, Win7/8 Pro Pack,  
Win8 Client App,  
Windows Phone App

# What's New?

Email via Office 365,  
Hosted, or on-premises  
Exchange Server

Maximum supported  
devices has been  
increased to 50

Windows Azure Online  
Backup

Storage Spaces

Remote domain join

Support for single server  
DirectAccess topology

Ability to monitor remote  
connections

Enhanced Dashboard  
Home page

*My Server*  
Win8 style UI  
client app

Windows 8 File History  
integration

Group Policy integration  
for client security settings

Touchable RWA

*My Server*  
Updated Windows  
Phone app

Enhanced SDK and new  
Web Services platform

NIC Teaming

Support for running  
Connector software on  
servers running  
Windows Server 2008  
R2 and later

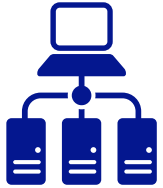
Improved application  
compatibility

Improved support for  
hosted environments

Grow to Windows  
Server 2012 Standard

Hyper-V Replica

# Why Windows Server 2012 Essentials?



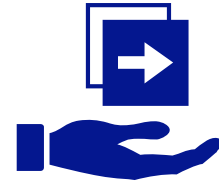
## Data protection

Enjoy peace of mind with daily, automatic, backups of every computer on your network and the Windows Server 2012 Essentials server itself.



## Anywhere access

Quickly connect to the server and computers in your network to access all your files, even run applications, from virtually any location just as if you were sitting in your office.



## Email integration

Enjoy the flexibility to choose the hybrid solution that fits best your business' needs, with seamless integration of cloud services and on-premises applications.



## Core IT improvements

Quickly identify the tasks that need to be completed when first starting the server with a redesigned homepage that, after initial setup, provides you with clear, actionable status information on the servers, network and PC's.

# Feature Overview





# User Management and Identity

- Uses Active Directory for authentication and authorization
- User accounts can be created as Standard or Administrator
- Password Policy
- Integrated mailbox management with cloud or on-prem messaging
- Built-in “Administrator” account is disabled

The screenshot displays the Windows Server 2012 Essentials Dashboard. The main navigation bar includes 'HOME', 'USERS', 'DEVICES', 'STORAGE', and 'APPLICATIONS'. The 'USERS' section is active, showing a table of user accounts. Below the table, the 'admin' user is selected, and its properties are displayed, including 'Anywhere Access Permission' and 'Remote connections'.

Name	Logon name	Anywhere Access	Access level	Status
Administrator (1)				
admin	admin	Connected	Administrator	Active
Standard user (6)				
Craig Dewar	Craig	Allowed	Standard user	Active
Franz Kohl	Franz	Allowed	Standard user	Active
Jan Kotas	Jan	Allowed	Standard user	Active
Jeff Phillips	Jeff	Allowed	Standard user	Active
Mu Han	Mu	Allowed	Standard user	Active
Terry Adams	Terry	Allowed	Standard user	Active

**admin Tasks**

- View the account properties
- Change the user account password

**Users Tasks**

- Add a user account
- Set the password policy
- Export all remote connections

**admin**

**Anywhere Access Permission**

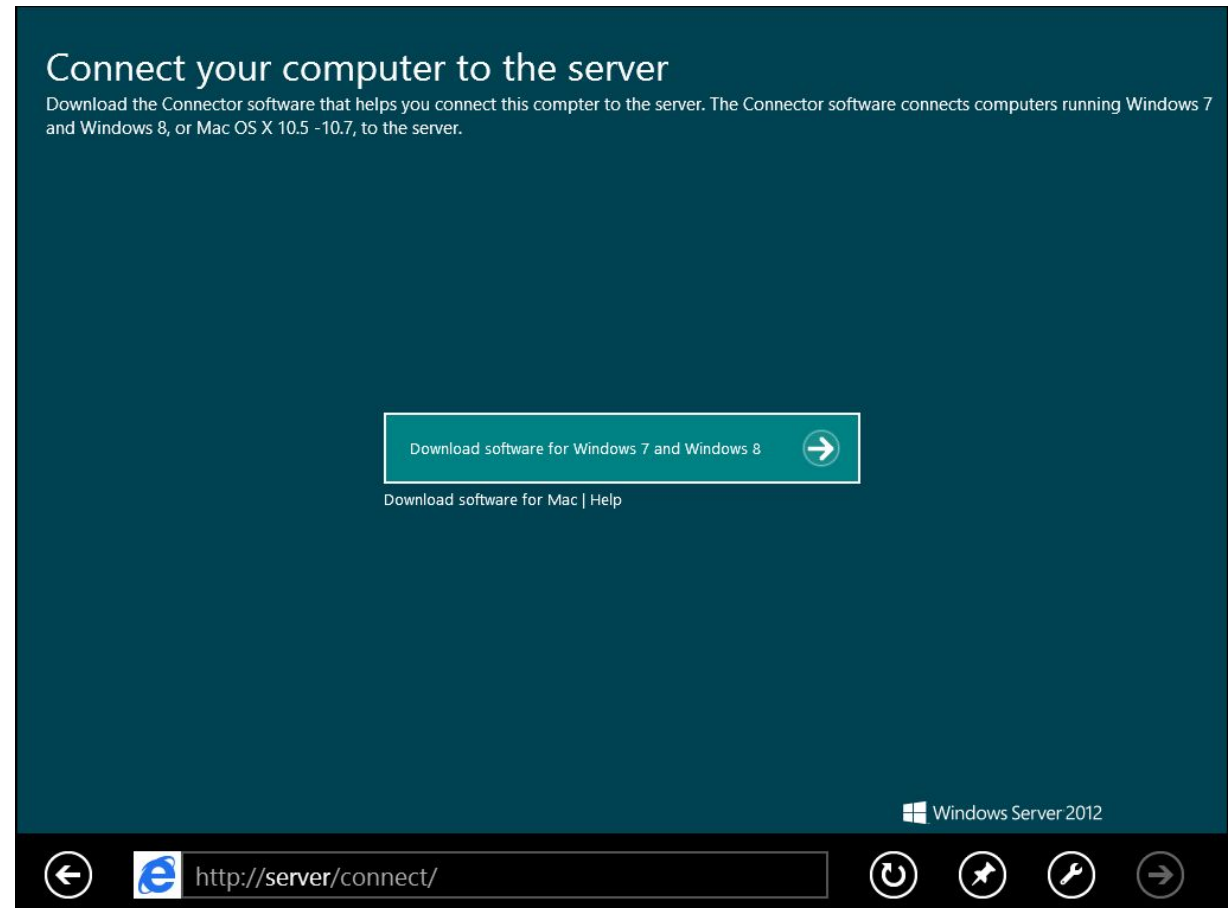
Virtual private network: Allowed  
Remote Web Access and web services applications: Allowed

**Remote connections**

Client: 184.168.106.78  
Start time: 9/25/2012 12:46:54 PM  
Duration: Less than a minute  
Connected from: Remote Web Access

# Connecting Clients

- Connection to Windows Server 2012 Essentials can be done by the end user using a web page
- Can join when locally connected to the network or from a remote location
- .NET Framework is installed (if necessary)
- Users enter their credentials to connect
- Option to move existing local settings and data\*
- Ability to provide a computer description
- Option to enable computer to wake up for client backups



\*Requires Windows Pro SKU

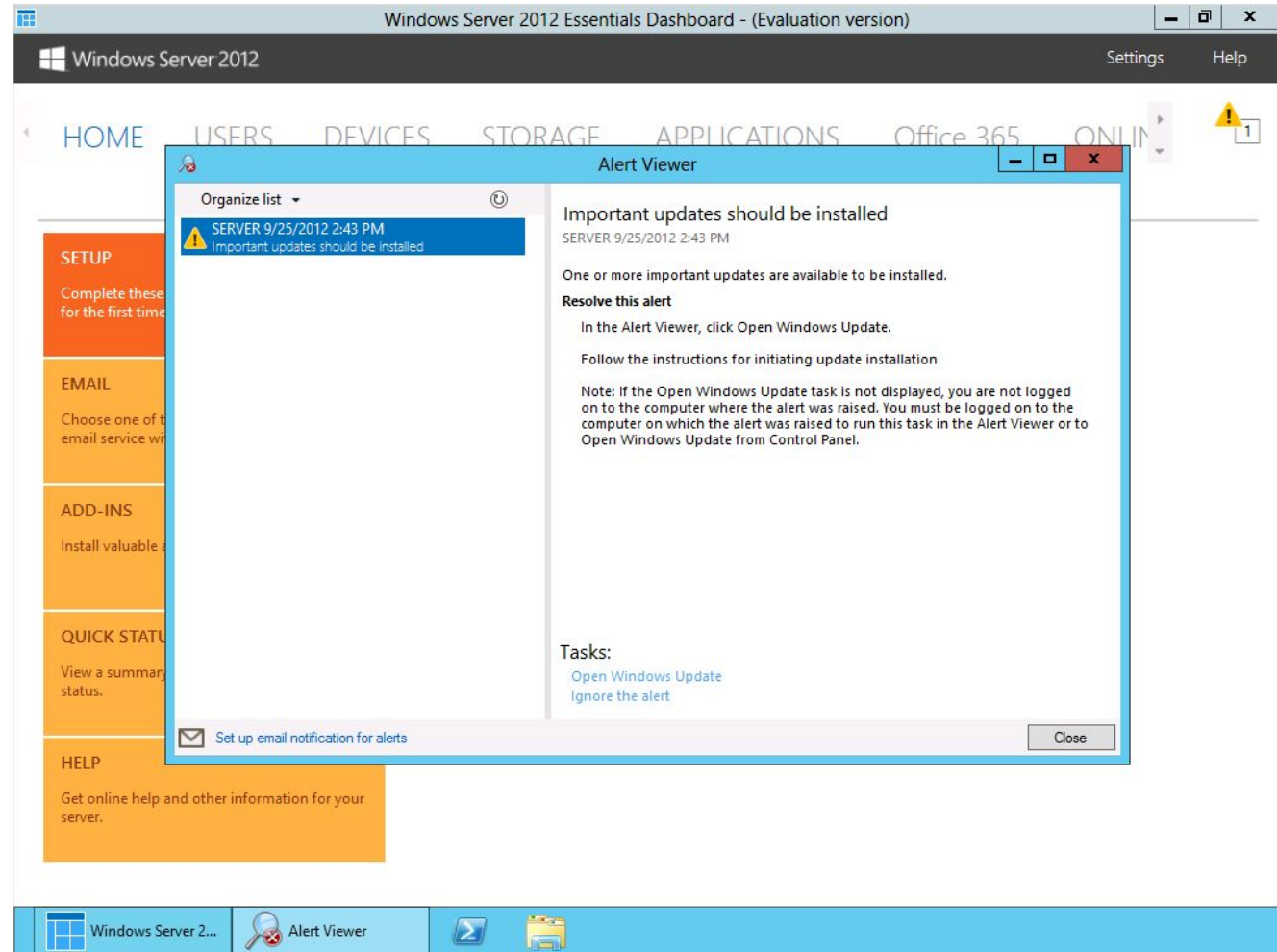
# Remote Web Access

- Remote access to shared folders
- Remote access to computers and the applications running on them
- Remote access to the Dashboard or the server desktop to perform administration tasks
- Ability for users to remotely change their passwords

The screenshot displays the Windows Server 2012 Remote Web Access interface. The top navigation bar includes 'Windows Server 2012', 'Home', 'Shared Folders', 'Computers', 'Media', and a user profile for 'admin' with a 'Sign out' option. The main content area is divided into four sections: 'Computers' (listing SERVER, JEFFP-PC, and TERRY-PC), 'Shared Folders' (listing Users, Recorded TV, Pictures, and Company), 'Media Library' (listing Pictures and Music), and 'Links' (listing various server-related resources). A login dialog box is overlaid on the bottom right, featuring the Windows Server 2012 logo, the text 'Windows Server 2012 Essentials Remote Web Access', and input fields for 'User name' and 'Password'. A 'Remember me on this computer' checkbox and a 'Sign in' button are also present. The footer includes '© 2012 Microsoft', 'View: Tablet | Desktop', and a 'Privacy' link.

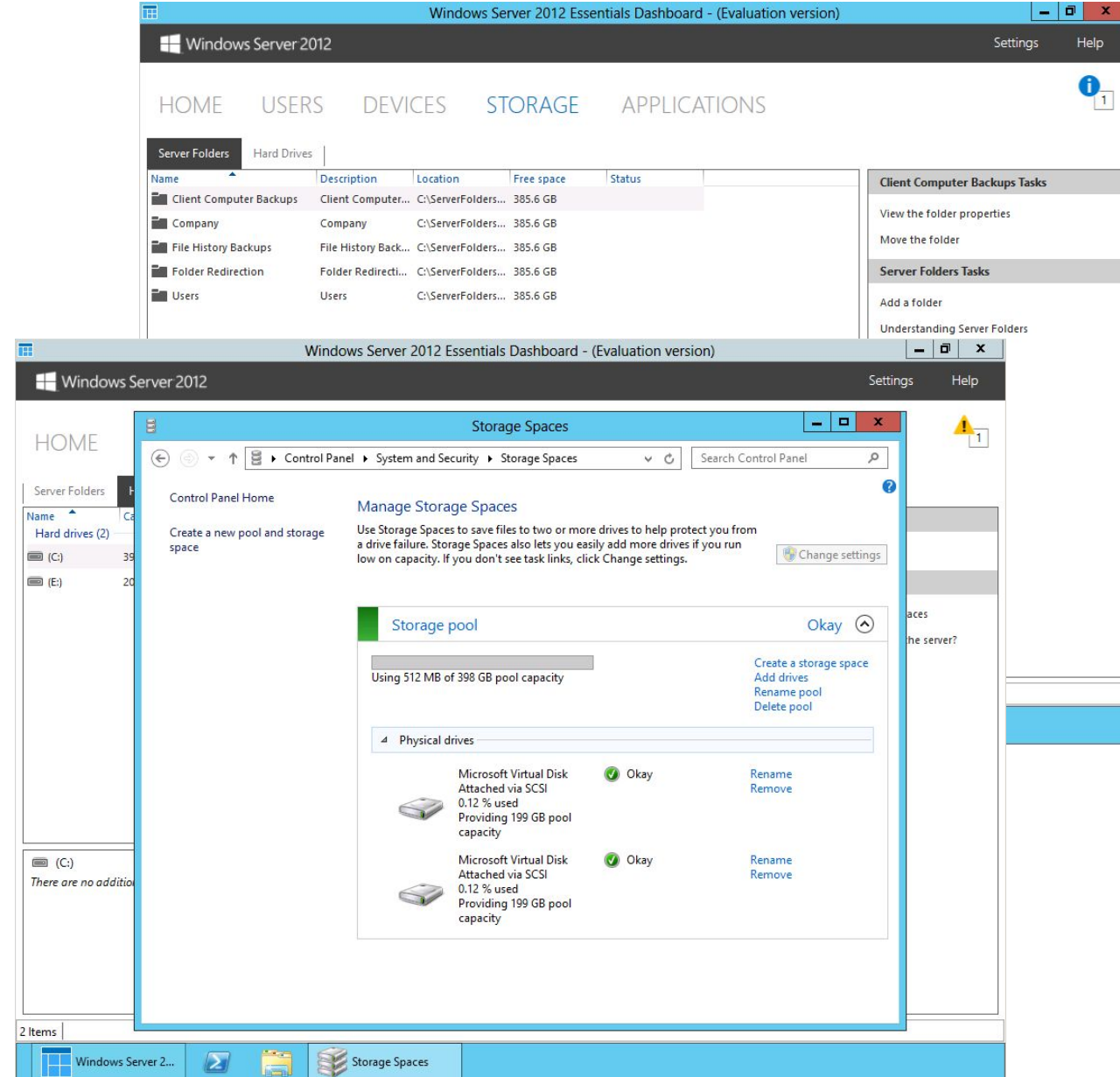
# Health Monitoring and Alerts

- Helps customers and partners monitor the security status of the network
  - Send alert notifications to customer and/or partner
- 3 severity levels (informational, warning, critical)
- Alerts include proscriptive guidance for resolution
- Many alerts include active links
- New Health Report Add-in



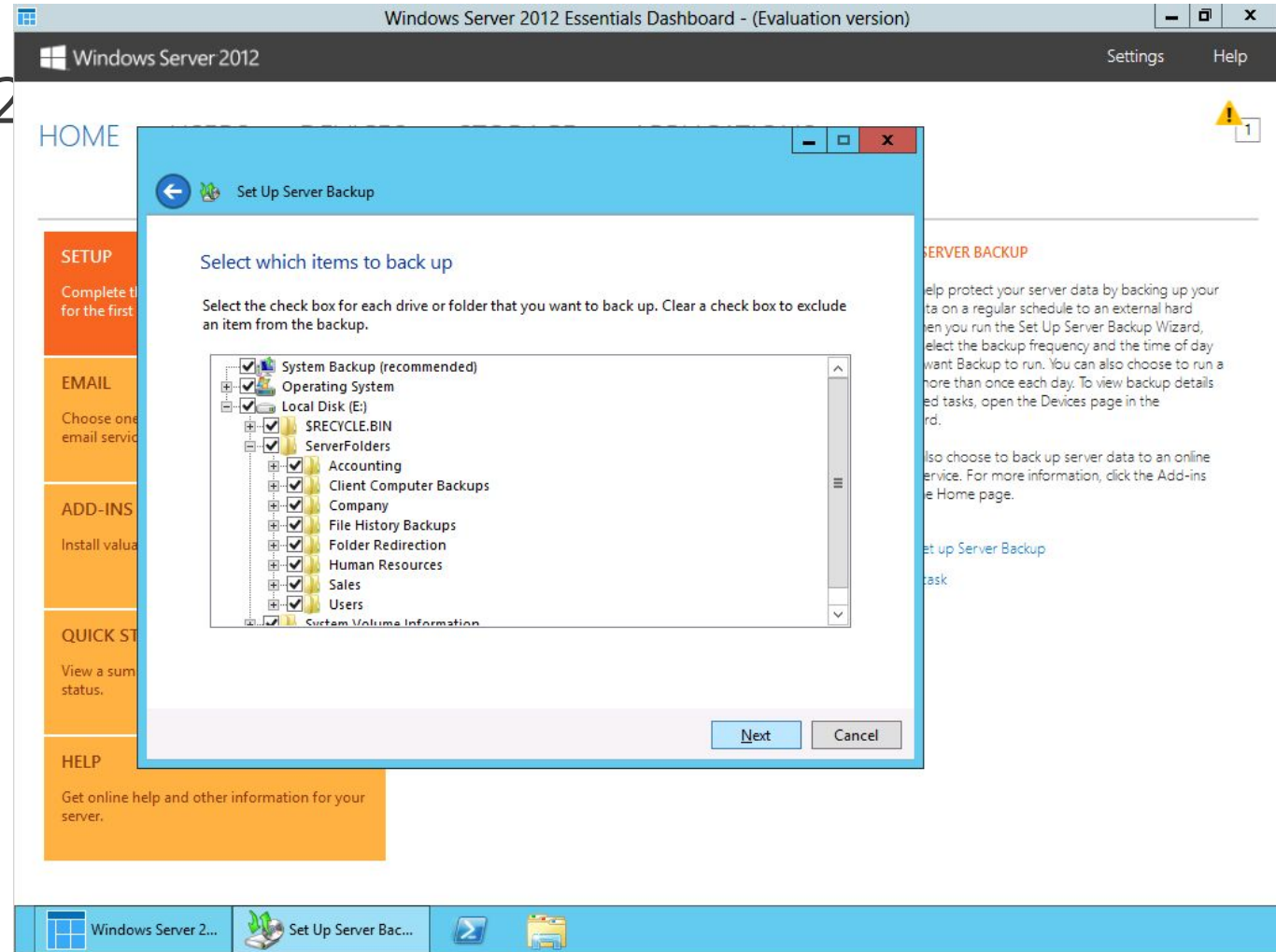
# Storage

- The same Windows Server 2012 storage system
- Supports various storage configurations:
  - Individual physical disks
  - Storage Spaces and virtual disks
  - Hardware RAID
- Move Shared Folder wizard to simplify migrating data and permissions between disks



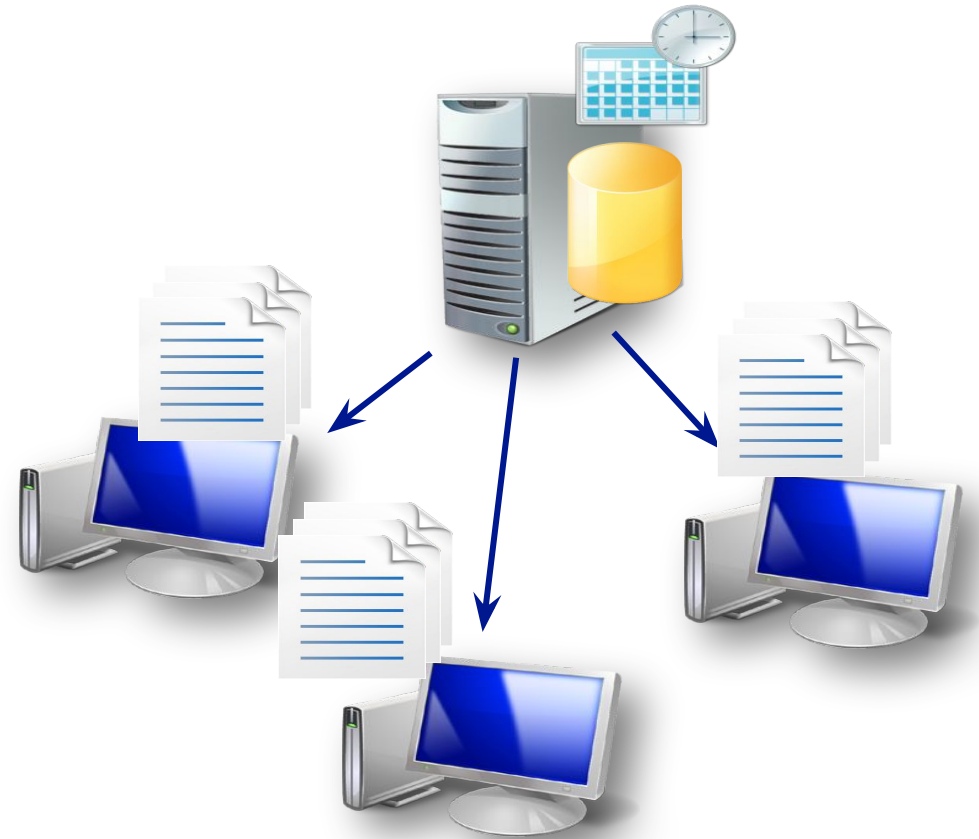
# Server Backup

- The same Windows Server 2012 Backup feature
- Supports volumes > 2 TB
- Key scenarios:
  - Single File Restore
  - Folder Restore
  - Server Bare Metal Recovery
  - Client Backup/Restore
  - Factory Reset (for headless)



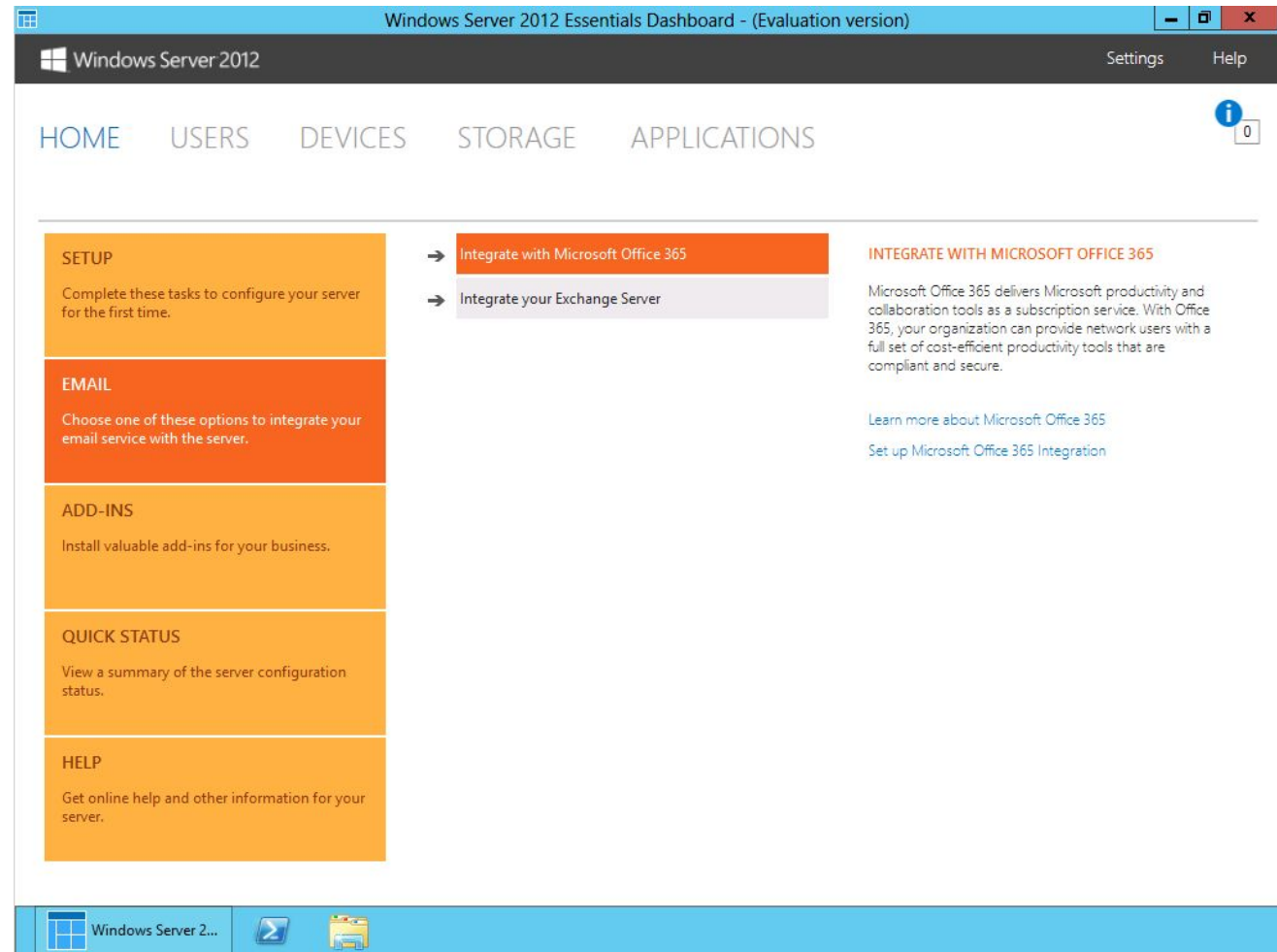
# Client Computer Backup

- Automatically backup all computers on a nightly basis
- File and folder restore wizard
- Recover full system and data (bare metal restore) of backed up client computers to similar hardware
- VSS writer for backup and restore of client backup database



# Email Integration

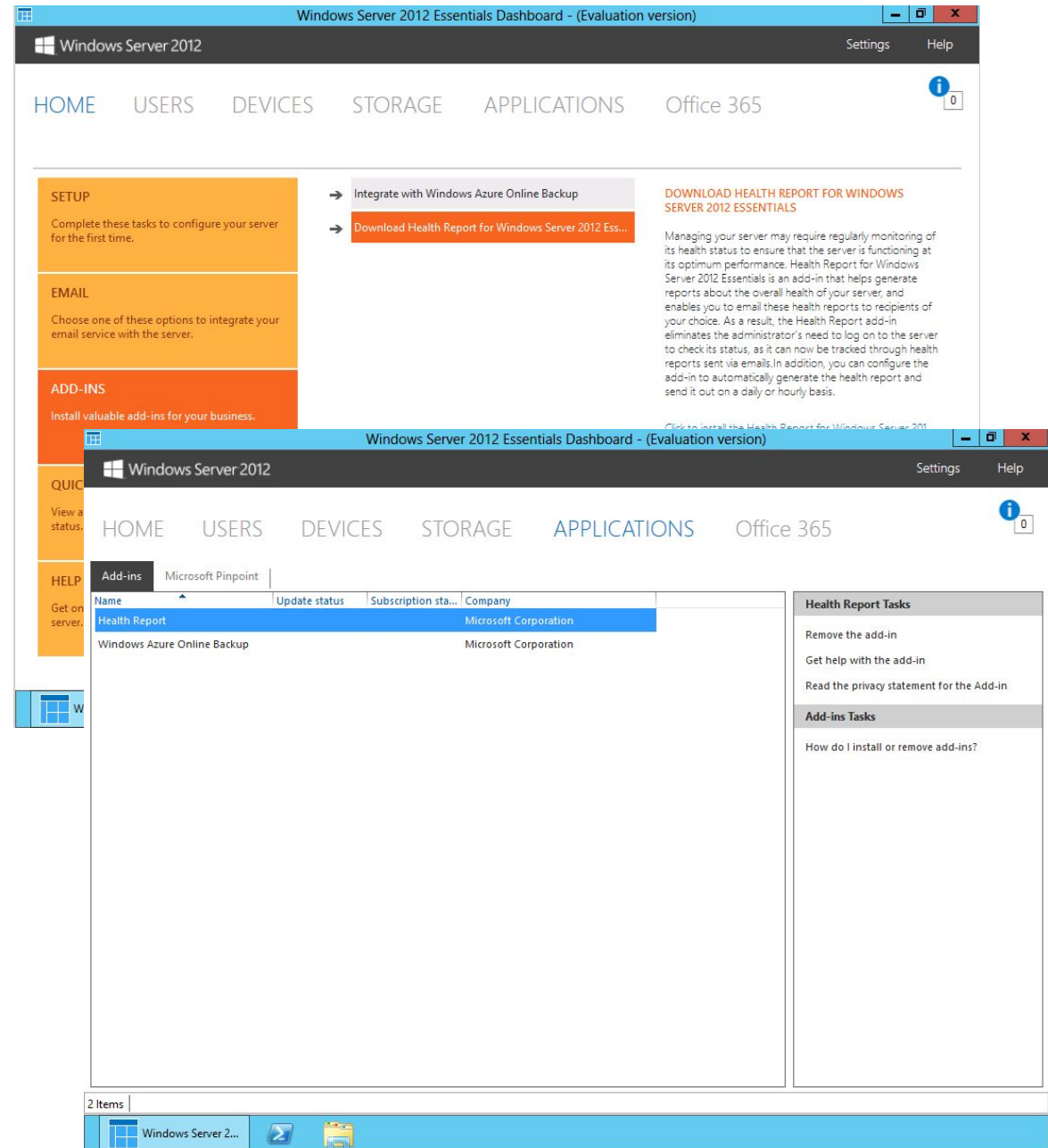
- Flexibility to choose the desired messaging solution:
  - Office 365
  - On-prem Exchange Server
  - Hosted Exchanged
- All options provide integrated mailbox management





# Extensibility

- Rich Software Development Kit (SDK)
- Add-ins
  - Functionality that extends the product to add end user features, administrative features, or both
  - Support for OEM pre-installation during factory imaging
  - Can be cloud-based or on-premise apps
- Add-in Manager
  - A centralized location to manage add-ins



# Mac Support

- Support for Macintosh OS X version 10.5 to 10.8
- Client Connector, Dashboard, Launchpad (including health alerts)
- Macs appear on the Computers page of the Dashboard
- Can use server as Time Machine backup destination
- Mac client-side support for add-ins
- Mac and iPhone support for Remote Web Access



# Planning & Deployment Scenarios



# Typical First Server Deployment

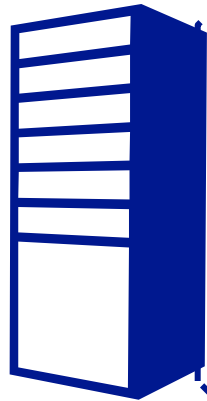
- Replacement for peer-to-peer networking and PC-as-a-server
- Most often deployed pre-installed
- Physical hardware
- Apps running on the server
- Messaging & collaboration in the cloud
- Other cloud-based apps & services



# Deploying using Virtualization

Windows Server 2012 Standard includes downgrade rights to run Essentials

**Windows Server 2012 Standard** running Hyper-V provides up to **two virtual instances** with a single license



Virtual instance running **Windows Server 2012 Essentials**

- Remote Web Access
- Client computer backup
- Email integration
- Dashboard, etc.



Virtual instance running **Windows Server 2012 Standard**

- Can be used for additional workloads, such as Exchange Server, SharePoint, WSUS, SQL Server, Remote Desktop Services, etc.

# Growing Beyond 25 User Accounts

Businesses that grow beyond 25 users can perform an in-place license transition to Windows Server 2012 Standard

Essentials value-add features remain, with a maximum supportability limit of 75 users and devices

Windows Server 2012 Standard licensing would then apply, including the use of the CAL licensing model


The value-add features can be removed entirely for businesses that grow larger than 75 users

# Migration Guidance




## TechNet Migration Documentation


Learn more about migrating to Windows Server 2012 Essentials at  
<http://technet.microsoft.com/en-us/library/jj200183.aspx>




Migrate Windows Small Business Server 2003 to Windows Server 2012 Essentials  
<http://technet.microsoft.com/en-us/library/jj200112.aspx>



Migrate Windows Small Business Server 2008 to Windows Server 2012 Essentials  
<http://technet.microsoft.com/en-us/library/jj200141.aspx>



Migrate Windows SBS 2011 Essentials to Windows Server 2012 Essentials  
<http://technet.microsoft.com/en-us/library/jj721737.aspx>



Migrate Windows SBS 2011 Standard to Windows Server 2012 Essentials  
<http://technet.microsoft.com/en-us/library/jj721754.aspx>



Transition from Windows Server 2012 Essentials to Windows Server 2012 Standard  
<http://technet.microsoft.com/en-us/library/jj247582.aspx>

# System Requirements

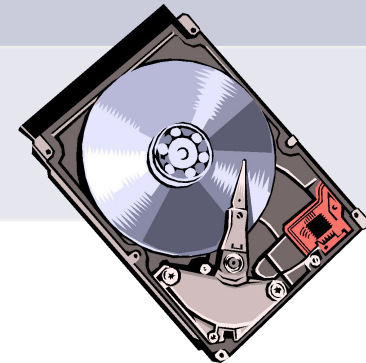
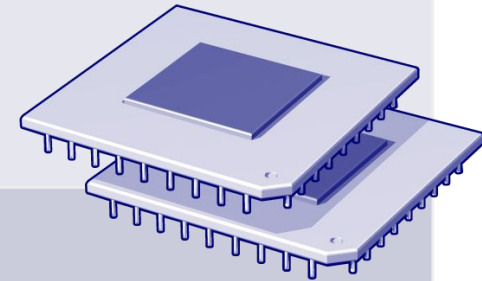




# System Requirements

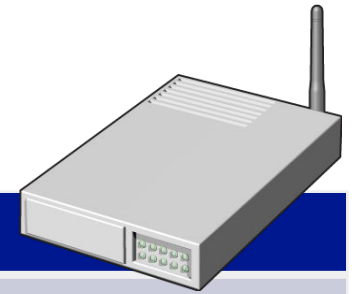
## Windows Server 2012 Essentials

Component	Minimum	Recommended
Processor/ CPU socket	1.4 GHz (64-bit processor) or faster for single core, or 1.3 GHz (64-bit processor) or faster for multi-core	3.1 GHz (64-bit processor) or faster multi-core
Memory (RAM)	2 GB	8 GB
Hard drive	160 GB hard disk with a 60 GB system partition	



<http://technet.microsoft.com/library/jj200132.aspx>

# Additional Requirements



Component	Description
Network adapter	Gigabit Ethernet adapter (10/100/1000baseT PHY/MAC)
Internet	Some functionality may require Internet access (fees may apply) or a Windows Live® ID Account
Supported Client operating systems	Windows 8, Windows 7, Macintosh OS X version 10.5 to 10.8
Router	A router or firewall that supports IPv4 NAT
Additional requirements	<ul style="list-style-type: none"><li>• Super-VGA 800 x 600 (minimum) or 1024 × 768 (recommended) or higher-resolution monitor (headed mode only)</li><li>• Keyboard and Microsoft® Mouse or compatible pointing device (headed mode only)</li><li>• DVD-ROM drive</li></ul>
Supported networking configuration	<ul style="list-style-type: none"><li>• Your server must be connected via a network cable to a router</li><li>• The router should be a UPnP-certified device, but it is not required</li><li>• The router should be in the 192.168.x.x subnet, but it is not required</li></ul>

# Resources



## Product Page

Learn more about Windows Server 2012 Essentials at <http://microsoft.com/essentials2012>



## TechNet TechCenter

Discover more technical information at <http://technet.microsoft.com/en-US/sbs/jj159331>



## Partner Resources

Find resources specifically for partners at <http://partner.microsoft.com> and learn about the first server opportunity at <http://aka.ms/pmcFirstServer>



Microsoft

© 2012 Microsoft Corporation. All rights reserved. Microsoft, Windows, and other product names are or may be registered trademarks and/or trademarks in the U.S. and/or other countries.

The information herein is for informational purposes only and represents the current view of Microsoft Corporation as of the date of this presentation. Because Microsoft must respond to changing market conditions, it should not be interpreted to be a commitment on the part of Microsoft, and Microsoft cannot guarantee the accuracy of any information provided after the date of this presentation. MICROSOFT MAKES NO WARRANTIES, EXPRESS, IMPLIED OR STATUTORY, AS TO THE INFORMATION IN THIS PRESENTATION.

# Why Windows Server 2012 Essentials?

Simple and Easy to Use

One server meets all your business needs with simplified management and easily connects to the cloud

Protect Data with a Highly Secure, Reliable, and Compatible Server

Secure data with simplified backups and built-in disaster recovery

Cost Effective

Secure data with simplified backups and built-in disaster recovery, and deliver more cost-effective, scalable storage solutions

Access Business Information from Virtually Anywhere, Anytime

Consistent and easy access from virtually anywhere, anytime, with high security

Room to Grow

Run line-of-business applications  
Easily convert to Windows Server 2012 Standard

# Windows Server 2012

Simplified  
DirectAccess

Simplified VDI Configuration  
and Management

Server  
Manager

BranchCach  
e

Hyper-V

Storage  
Spaces

Increased  
Productivity

Replica

Windows NIC Teaming

Rich PowerShell  
templates

Network

Expanded Device

Virtualization

Storage Live  
Migration

Support