

# Clause-by-clause debate

# *What's the difference?*

## **Resolution-based debates**

- Lobbying
- Main-submitter & co-submitters
- Resolution is whole from the start

## **Clause-by-Clause debates**

- No Lobbying!
- No main/co-submitters. The whole committee forms the resolution.
- Preamble is added later
- Once the resolution has been formed, it is discussed as a whole

# *Clause-by-Clause simulation topic*

## **Reducing the environmental impact of public ground transport in metropolitan areas**

**Public ground transport** – a system of transport available for use by the general public

**Metropolitan areas** – a densely populated urban region



## *Why is it a problem?*

- CO2 emissions create air pollution
- Exhaust gases greatly contribute to climate change

### *At the same time*

- Public ground transport is a very convenient way of getting around the city
- it is crucial for millions of people worldwide

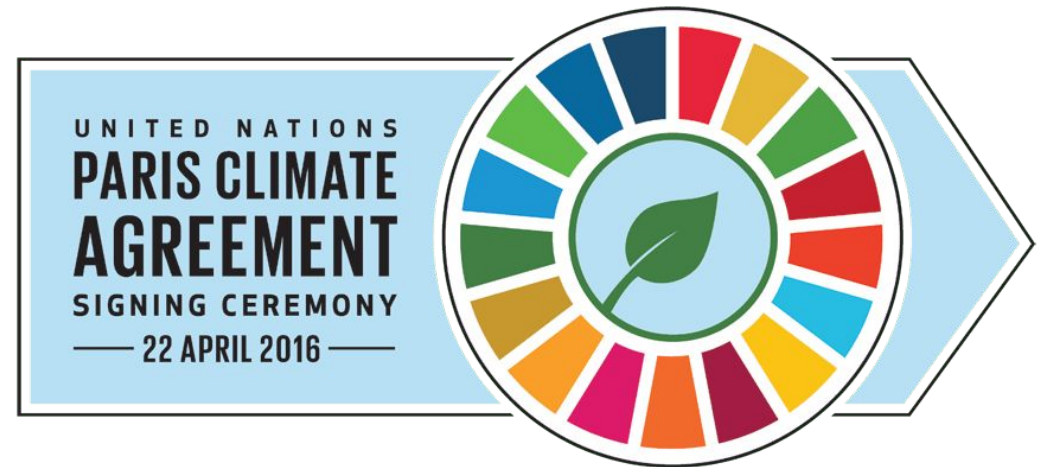
# Worrying statistics

- ❑ 15% of global CO2 emissions are related to the transport sector
- ❑ public transport in the U.S uses about half the fuel required by cars, light trucks and SUV's
- ❑ More available online...



# Relevant treaties and documents

- **Kyoto Protocol** (accepted in 1997 in Kyoto, Japan)
  - committing industrialized countries to limit and reduce greenhouse gases (GHG) emissions in accordance with agreed individual targets
- **Paris Agreement** (adopted in 2015 in Paris, France and entered into force 2016)
  - limiting global warming to well below 2°C and pursuing efforts to limit it to 1.5°C. It also aims to strengthen countries' ability to deal with the impacts of climate change and support them in their efforts



## Major counties involved (Countries for the simulation)

- USA
- Japan
- China
- India



# *How to get ready*

- research!
- write at least 2 clauses  
(+ speeches in favor of your clauses)
- send the clauses to your Chairs by Feb 26<sup>th</sup>  
(Wednesday)
- get ready to actively participate :)

