



MY DREAM HOUSE

A studio apartment is an apartment that consists of a bedroom, a living room, and a kitchen all in a single open space, but it includes a separate room with a door for the bathroom.



Light colours should prevail in the design of the room.



Loft

(an abundance of open space and industrial elements in decor)



High-tech

(functionality, usability, practicality, lightness of constructions, simplicity and clarity of forms)



Avant-garde

(allows you to focus on some things in the interior)

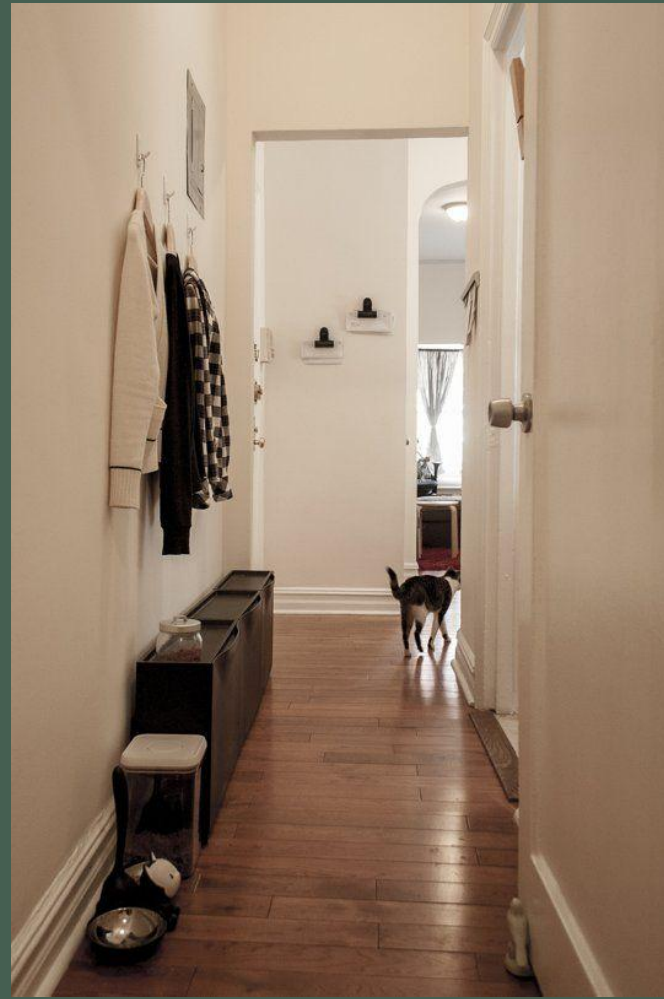


Maple parquet flooring



Solid ash parquet flooring





A hallway should include: open hangers for outerwear, open sections and closed shelves for shoes, mirrors, seats.

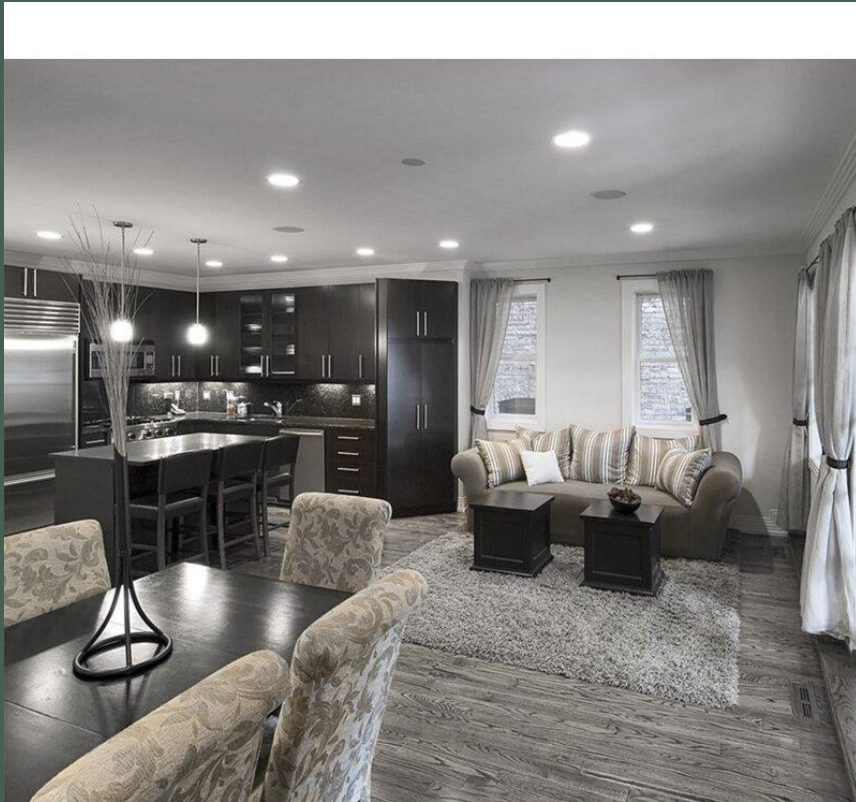


The kitchen is separated from the other area by decorative open shelving.

The main task is the rational use of the entire kitchen space. Different types of drawers and built-in compartments for household appliances can help with it.



A picture window with shutters, pendant lights and recessed lighting will help make the room brighter and the space larger.





parlor area

The sleeping area should be displayed on the second level, giving enough space below for arranging the working area and storage space for clothes.





A bathroom combined with a toilet should include a shower cubicle, a washing machine, a tumble dryer, a chest of drawers, and, of course, a basin.

An important part of the apartment is an insulated loggia, where a workplace with a built-in table and chair or a place to relax with beanbags and cushions can be organized.

