



# Joints

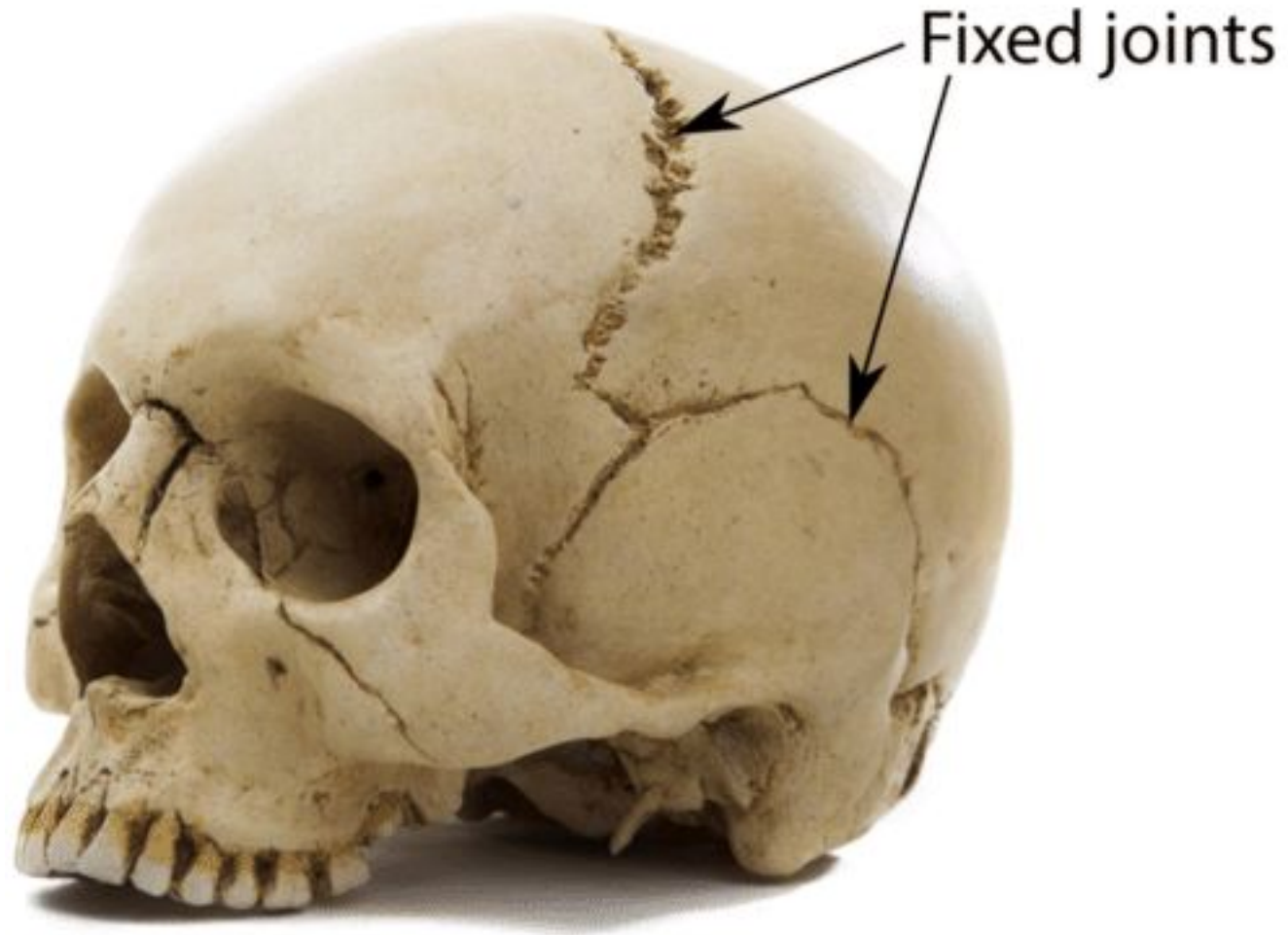
You will:

-compare type of joint between bones

- **Joint** - the area where two bones are attached
- There are 3 types of joints: fixed, semi movable and movable.
- Joints which can not move(**unmovable**) are called **fixed joints**.
- Joints which can move, but **not freely** are called **semi movable joints**.
- Joints which move **freely** are called **movable joints**.

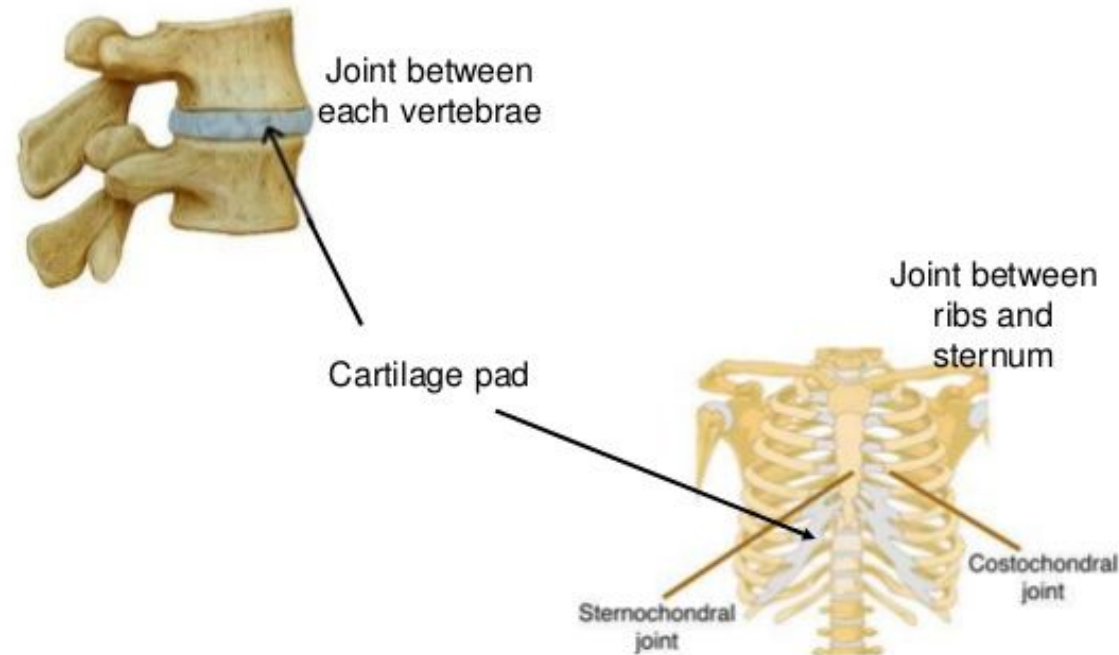


# Joints in cranium are fixed joints



# Semi movable joints in vertebrae

## Slightly Moveable Joints



# Joints between body and hands or legs are movable

