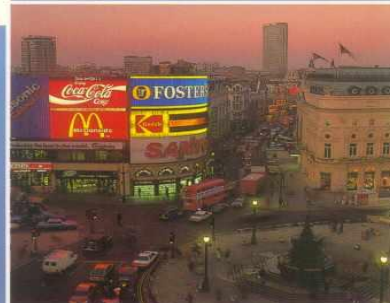
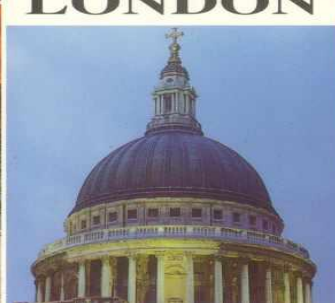
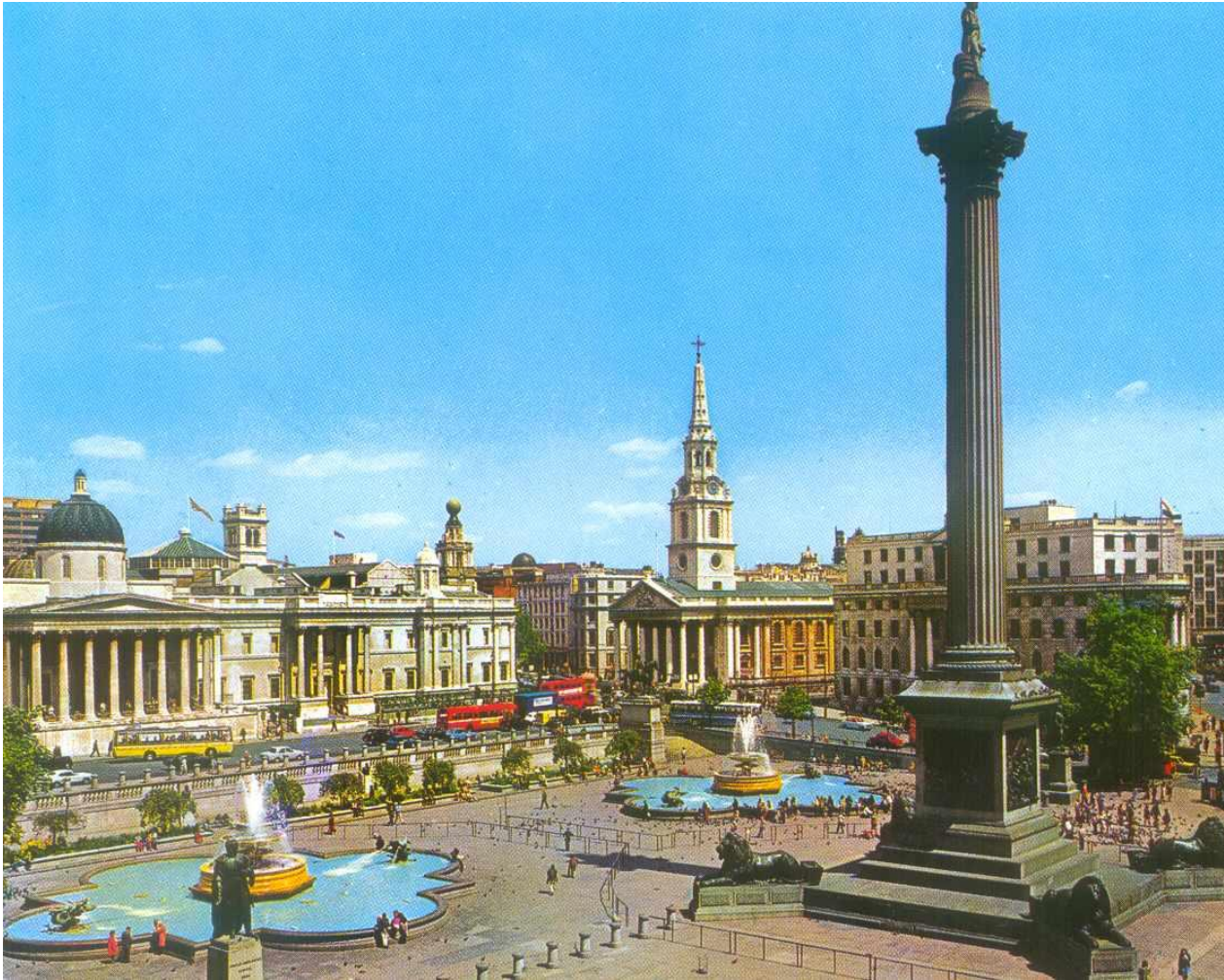


# LONDON



LONDON

# Trafalgar Square



# Trafalgar Square

- There are always a lot of people and pigeons on the square.
- Every winter there is a big Christmas tree which is a gift from Norway in the middle of the square.
- On New Year's Eve people gather around the tree.
- In the middle of the square there is Admiral Nelson's Column.



# Buckingham Palace



- This is the Queen's home.
- There is a great collection of paintings.

# Westminster Abbey

- This is a holy place.
- All English kings have been crowned and buried in the church since 1308.



# Westminster Cathedral



- It was built between 1895 and 1903.
- This is the seat of the Cardinal Archbishop and the leading Roman Catholic Church in England.
- Its bell tower is 84 metres high.

# Telephone booths

From here you can call your friends.



# The Houses of Parliament

- This big palace is the most famous building in the world – the British Parliament.
- The building is 280 metres long.
- There are more than 1000 rooms.





# Big Ben



- Big Ben, the big clock tower, is the symbol of London. It strikes hours.

# Tower Bridge

- The most famous bridge in London is a Tower bridge.



# Tower Bridge



- Tower Bridge is a bascule-bridge.
- The bascules will open to let ships pass through.

# Double-deckers



- There are big red buses called double-deckers in London.
- People sit upstairs and downstairs on these buses.
- Tourists like them very much.