

- СРСП № 2
- Lobular Pneumonia
- Modal verb «CAN»

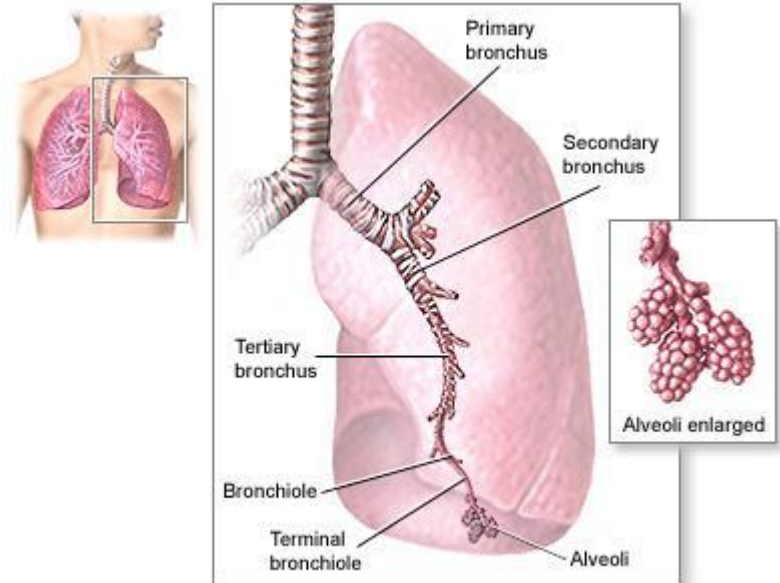
Подготовила: Ауканова Алуа,
Студентка 2-067 гр.,ОМ
Проверила: Дашкина Т.Г.

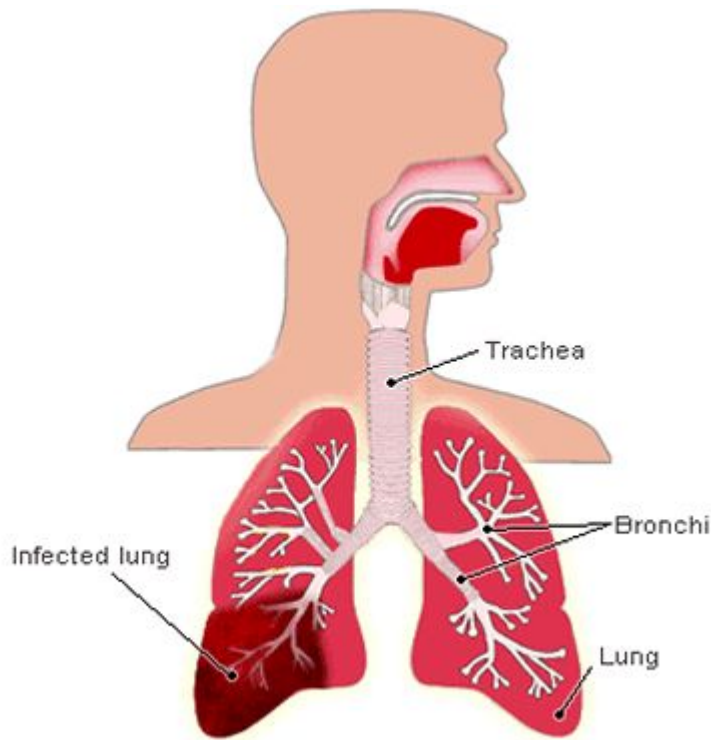
Lobular Pneumonia

Pneumonia is an infection of the lung that can be caused by nearly any class of organism known to cause human infections. These include bacteria, amoebae, viruses, fungi, and parasites.

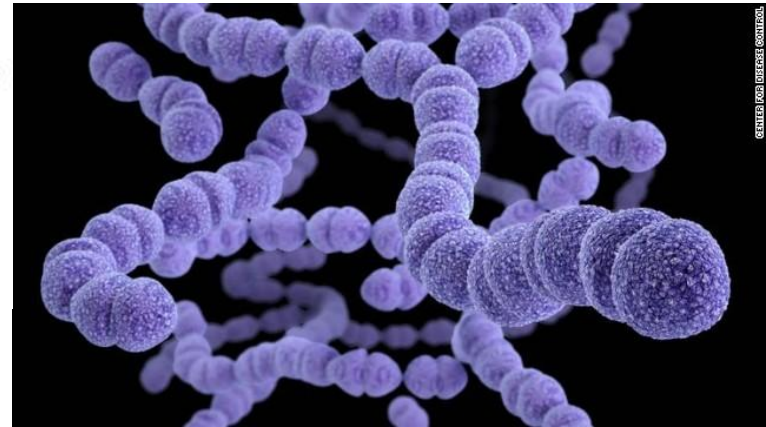
Depending on the extent of lesions, pneumonia can be :

- lobular (a lobe segment is affected)
- lobar (an entire lobe is affected)
- bronchopneumonia (affects bronchioles and adjacent alveoli)
- interstitial (inflammation affects the interstitial tissue, mainly the alveolar walls)





Lobar pneumonia is an acute exudative inflammation of an entire pulmonary lobe, produced in 95 % of cases by *Streptococcus pneumoniae* (pneumococci).



If not treated, lobar pneumonia evolves in four stages. Common to all stages is the enlargement of the affected lobe with loss of its spongy appearance.



Modal verbs (can, could, must, should, ought to, may, might, will, would, shall)

Модальные глаголы в английском языке отличаются от остальных глаголов тем, что они не используются самостоятельно и не обозначают конкретного действия или состояния, они отражают его модальность, то есть отношение к нему говорящего. Вместе модальный глагол и инфинитив значащего глагола образуют составное модальное сказуемое (compound modal predicate):

I can play volleyball.

Я умею играть в волейбол.

О каком именно отношении идет речь? Например, говорящий может оценивать действие как возможное, необходимое, разрешаемое, просимое, запрещенное, приказываемое, маловероятное, очень вероятное и т. д.:

Я поеду в Лондон.

Я могу поехать в Лондон.

Я должен поехать в Лондон.

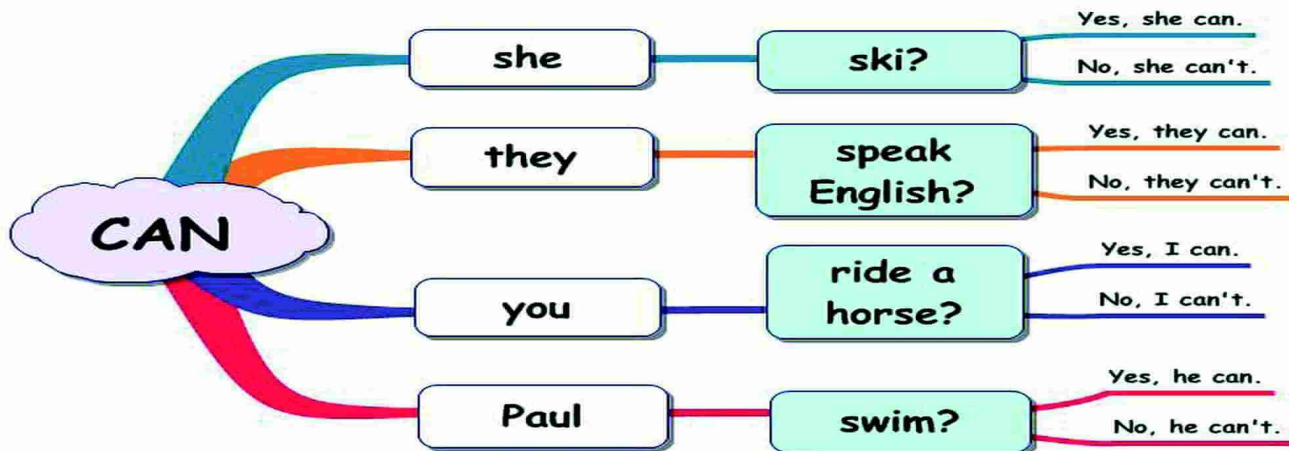
Можно я поеду в Лондон?

"Can" is one of the most commonly used modal verbs in English. It can be used to express ability or opportunity, to request or offer permission, and to show possibility or impossibility.

Modal verb CAN



Questions

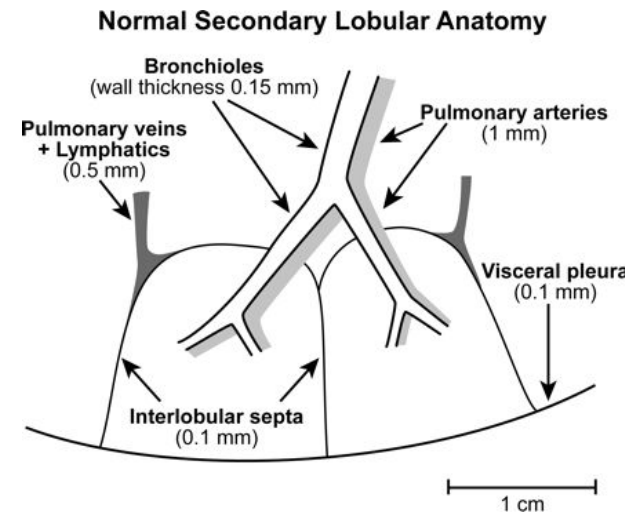


C
A
N

Pneumonia **can** develop gradually.

The patient's breathing **can** become more frequent.

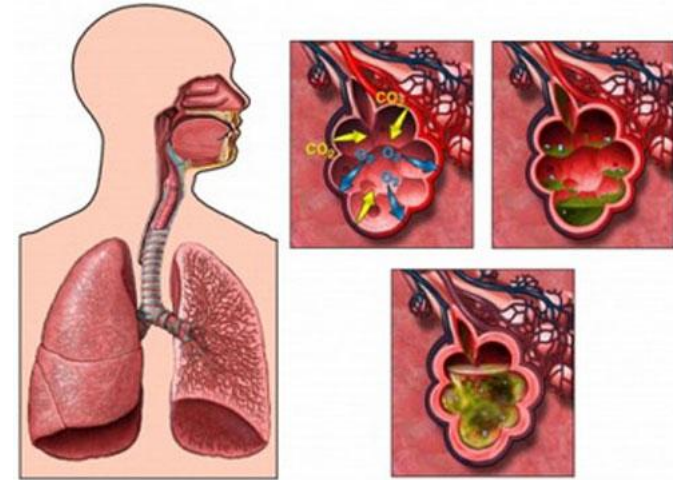
Cyanosis **can be** associated with the accompanying bronchitis, decrease in the respiratory surface and occlusion of numerous bronchioles and alveoli.



The patient **can** complain of the pain in the chest.

The blood analysis **can** reveal leukocytosis.

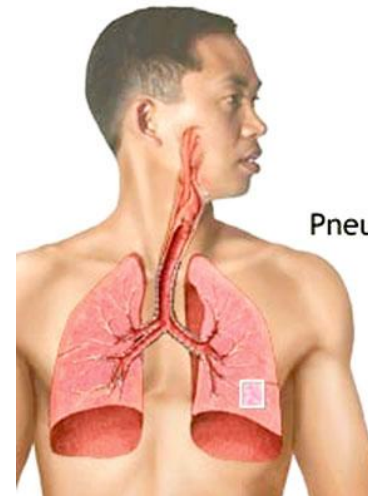
The urine **can** contain a small amount of protein and erythrocytes.



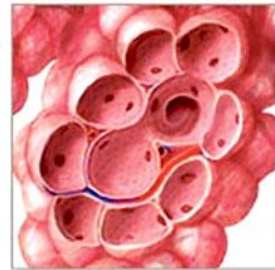
The X-ray examination of the lungs **can** reveal numerous foci of inflammation or various size, irregular form and different intensity.

The liver and spleen were **can** enlarged.

Patient's condition didn't **can** improve



Normal alveoli



Pneumonia



THANK YOU

FOR YOUR ATTENTION