

Sechenov First Moscow State Medical University of the Ministry
of Health of the Russian Federation (Sechenov University)



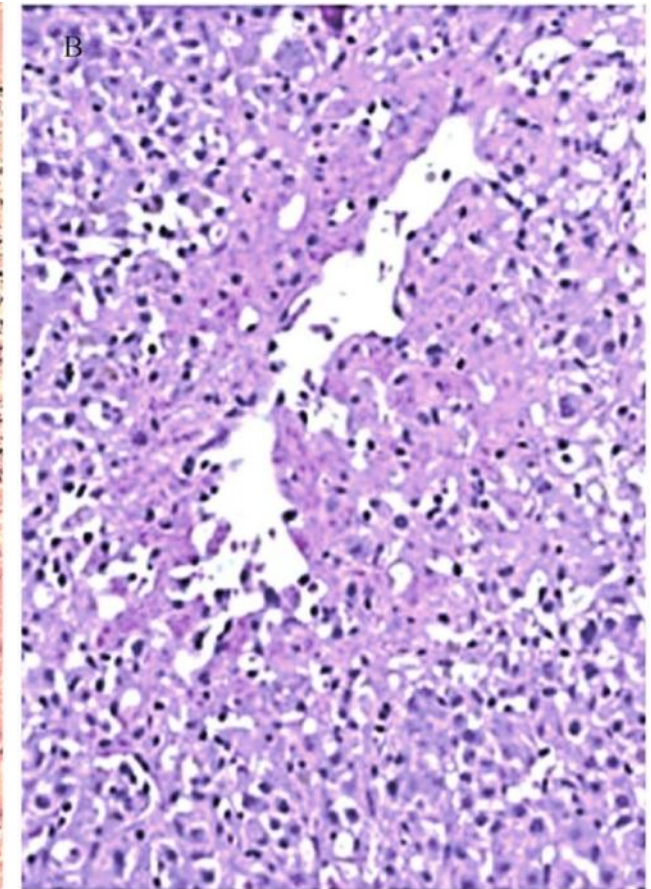
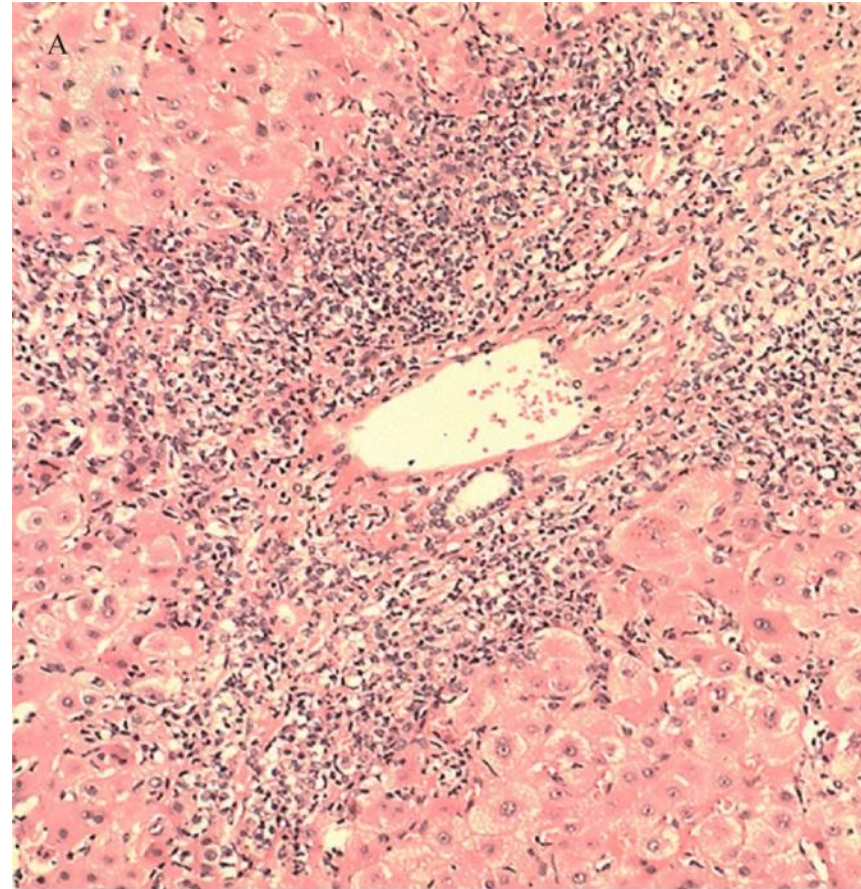
Autoimmune Hepatitis

REPORT OF THE SECOND-YEAR STUDENT OF THE SKLIFOSOVSKY INSTITUTE OF
CLINICAL MEDICINE 01-08 GROUP KARLINA IRINA

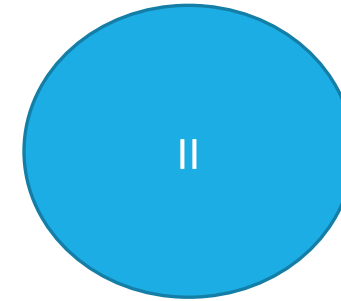
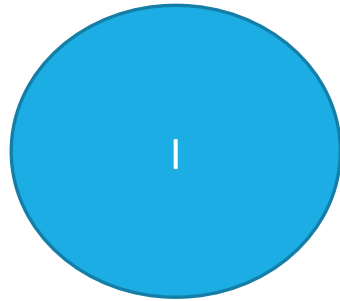
Moscow 2020

Introduce

Autoimmune Hepatitis (AIH) is a chronic liver disease that develops with a decrease or complete absence of tolerance to hepatocyte-specific autoantigens



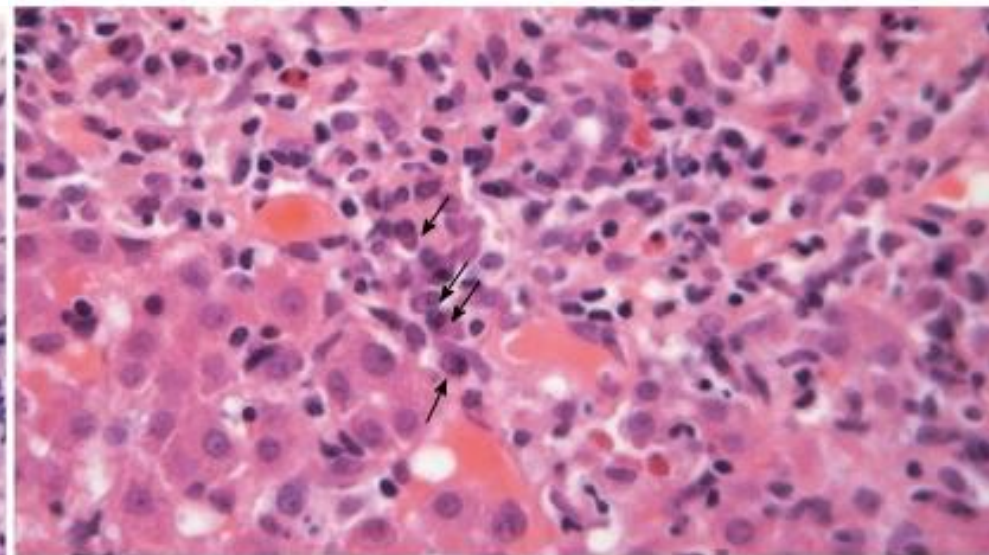
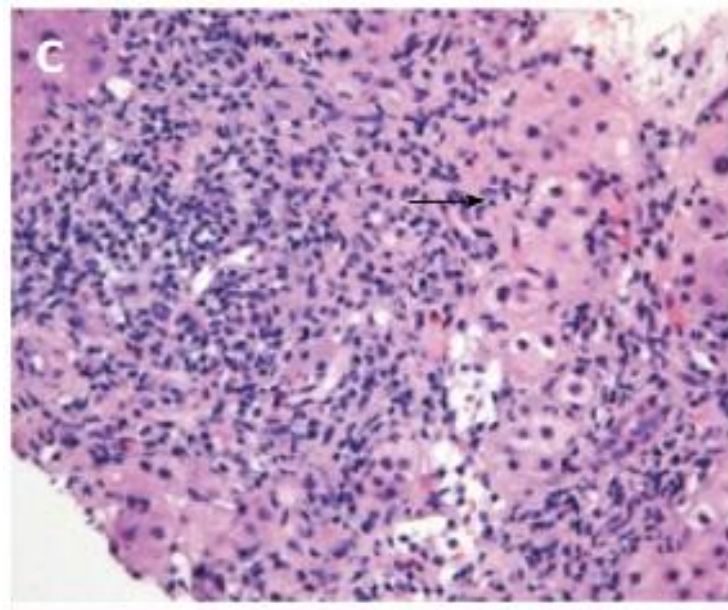
Autoimmune Hepatitis



Pathogenesis

In genetically susceptible people, the AIH can be caused by

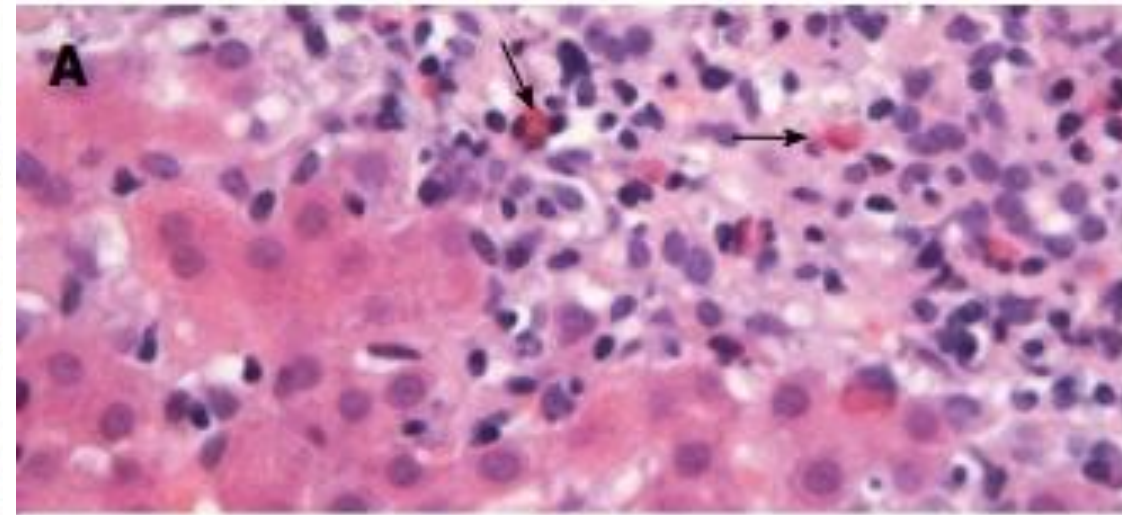
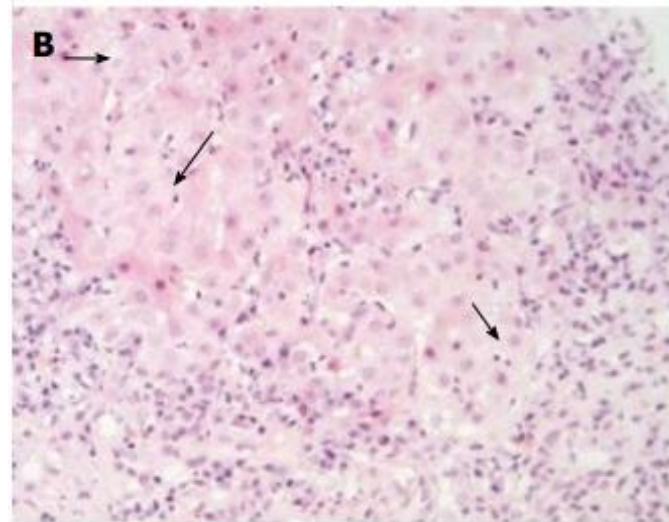
- external factors (viruses, drugs)
- internal factors (intestinal microbiota)



Gatselis NK, Zachou K, Koukoulis GK, Dalekos GN. Autoimmune hepatitis, one disease with many faces: etiopathogenetic, clinico-laboratory and histological characteristics. *World J Gastroenterol.* 2015 Jan 7;21(1):60-83. doi: 10.3748/wjg.v21.i1.60. PMID: 25574080; PMCID: PMC4284362.

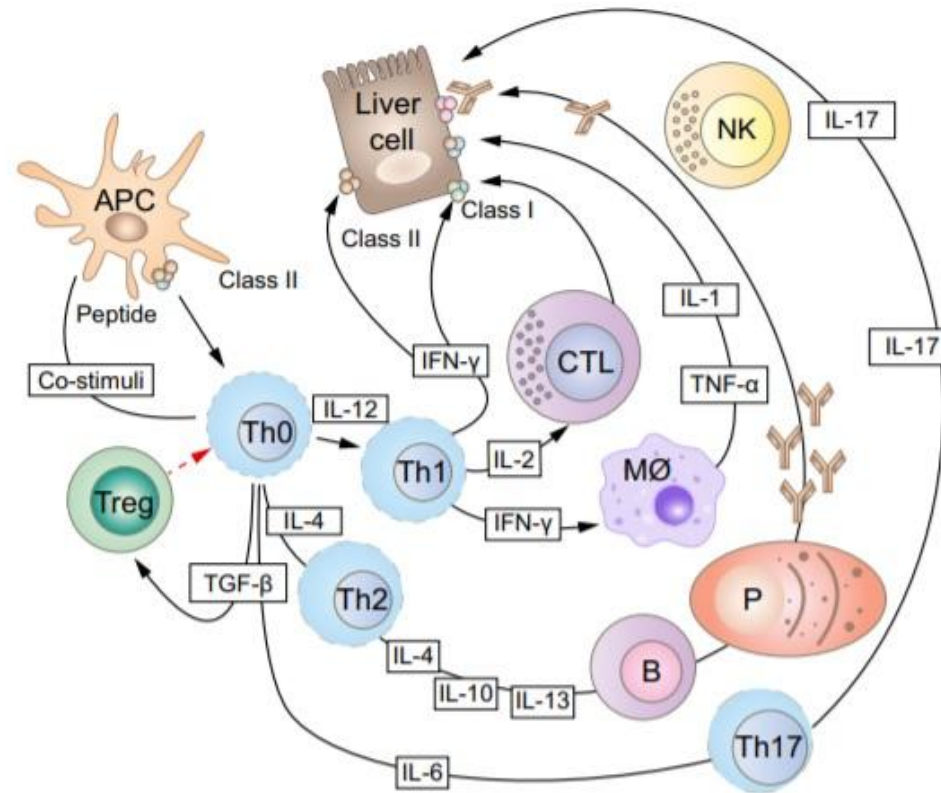
Molecular concepts of AIH development

- Molecular mimicry
- Incomplete negative selection of T-lymphocytes in the thymus



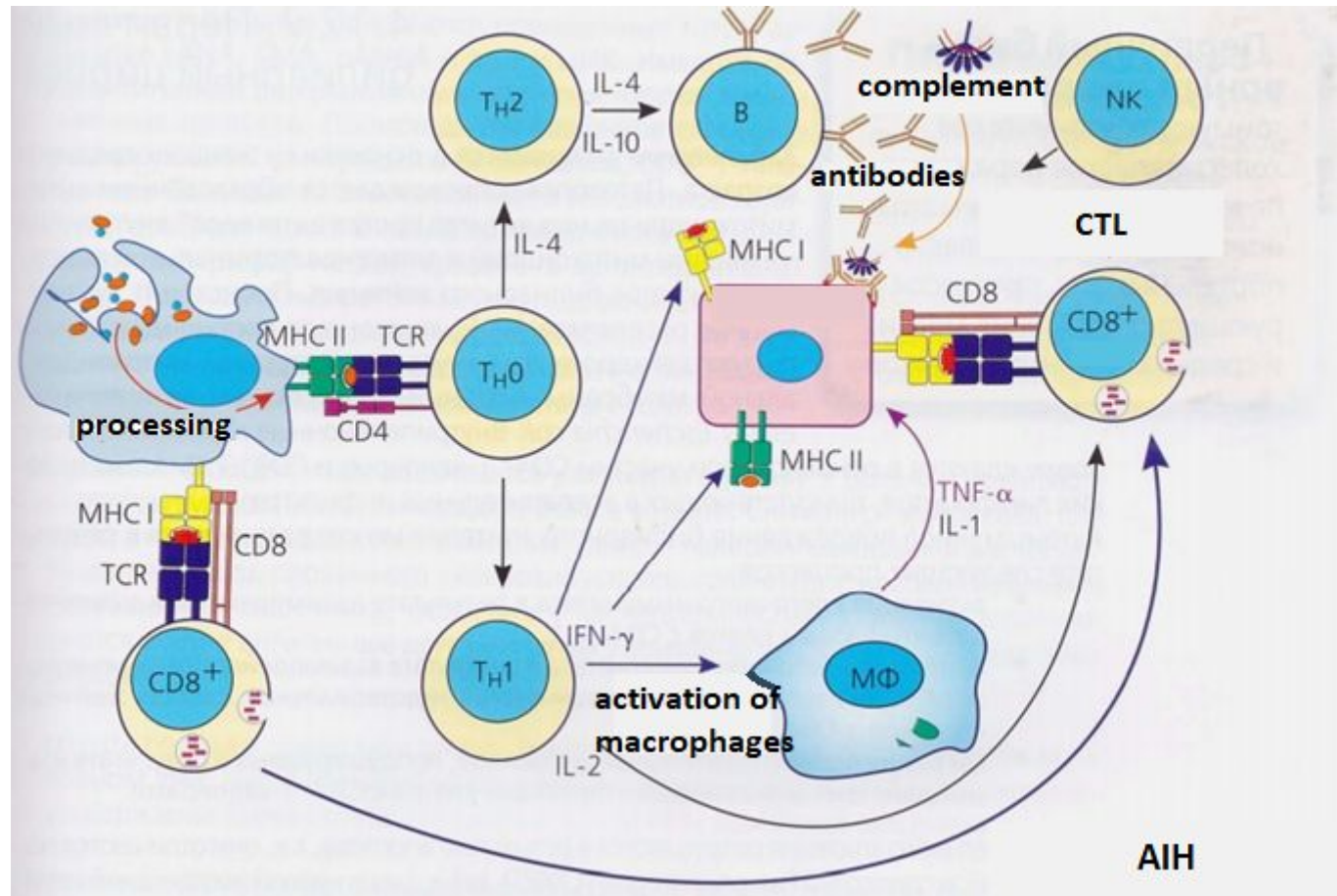
Gatselis NK, Zachou K, Koukoulis GK, Dalekos GN. Autoimmune hepatitis, one disease with many faces: etiopathogenetic, clinico-laboratory and histological characteristics. *World J Gastroenterol.* 2015 Jan 7;21(1):60-83. doi: 10.3748/wjg.v21.i1.60. PMID: 25574080; PMCID: PMC4284362.

Immunopathogenesis



Manns MP, Lohse AW, Vergani D. Autoimmune hepatitis--Update 2015. J Hepatol. 2015 Apr;62(1 Suppl):S100-11. doi: 10.1016/j.jhep.2015.03.005. PMID: 25920079.

Immunopathogenesis



Aetiology

Sex

75-80% of individuals with AIH are women

Age

The incidence of AIH-1 shows two peaks, one in childhood and adolescence and another peak at ~40 years of age; AIH-2 almost exclusively affects infants, children and adolescents

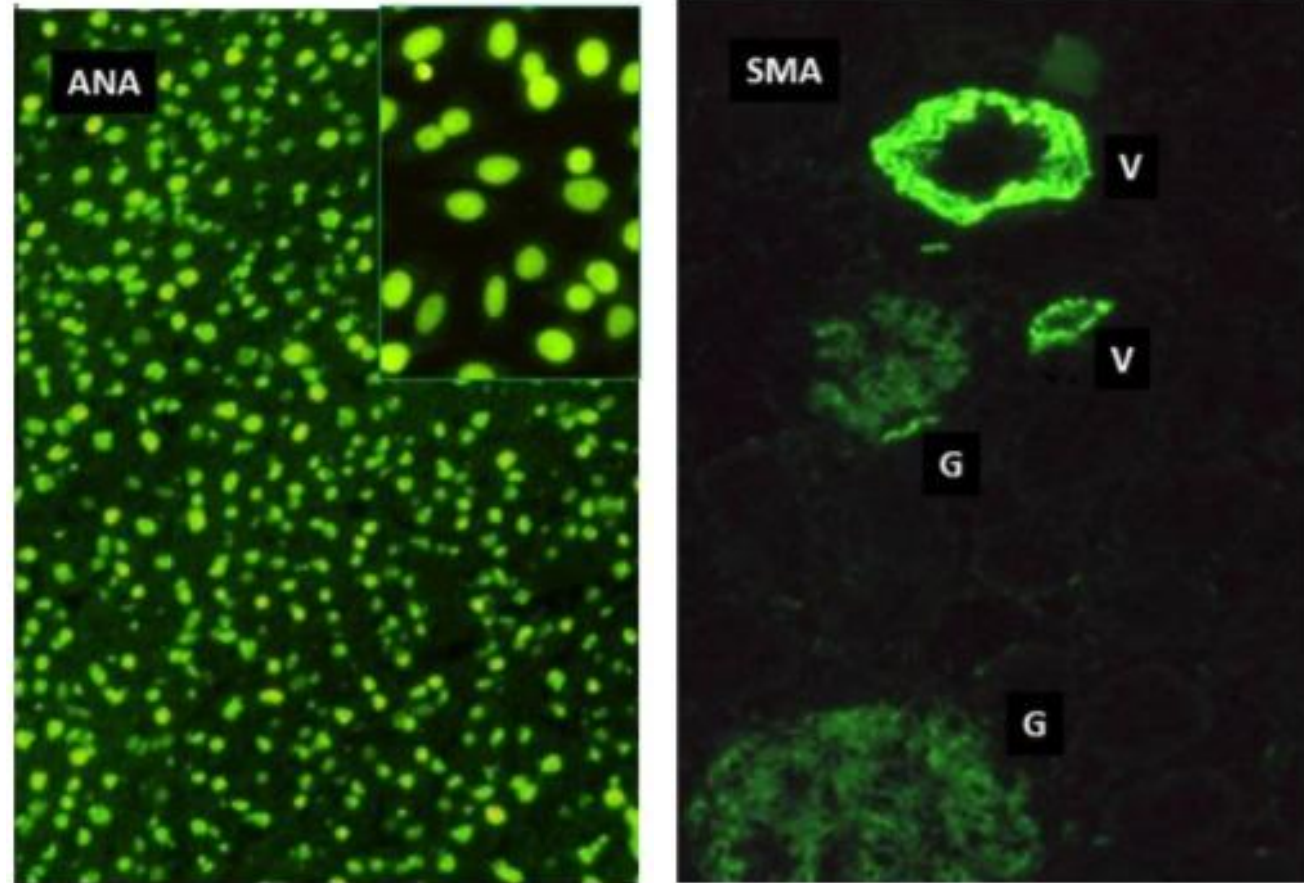
ENVIRONMENTAL FACTORS

Viral infections; the intestinal microbiota might have a role as well

Diagnosis

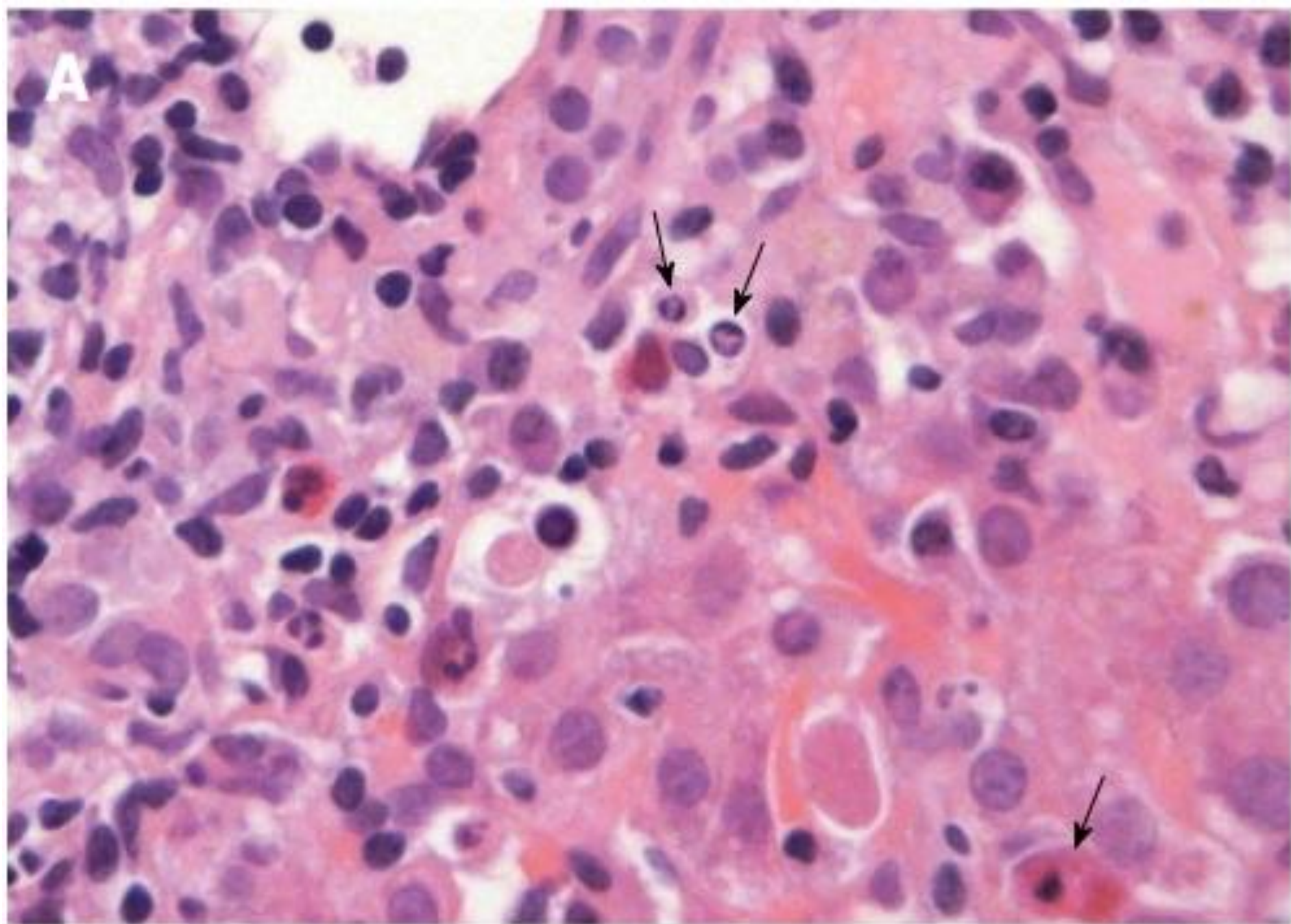
Serological diagnosis:

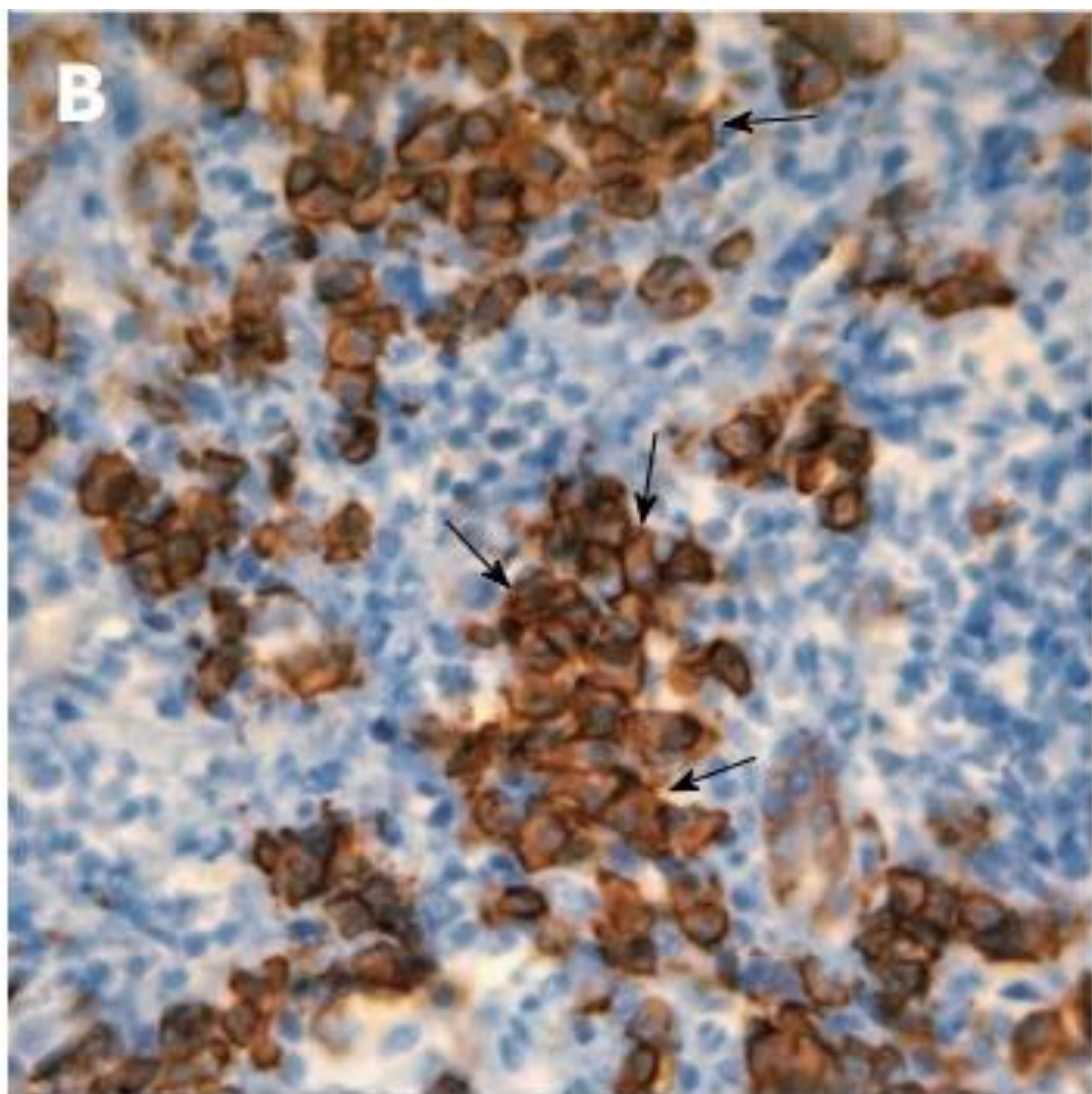
- an increase of AB
- increased IgG
- hypergammaglobulinemia

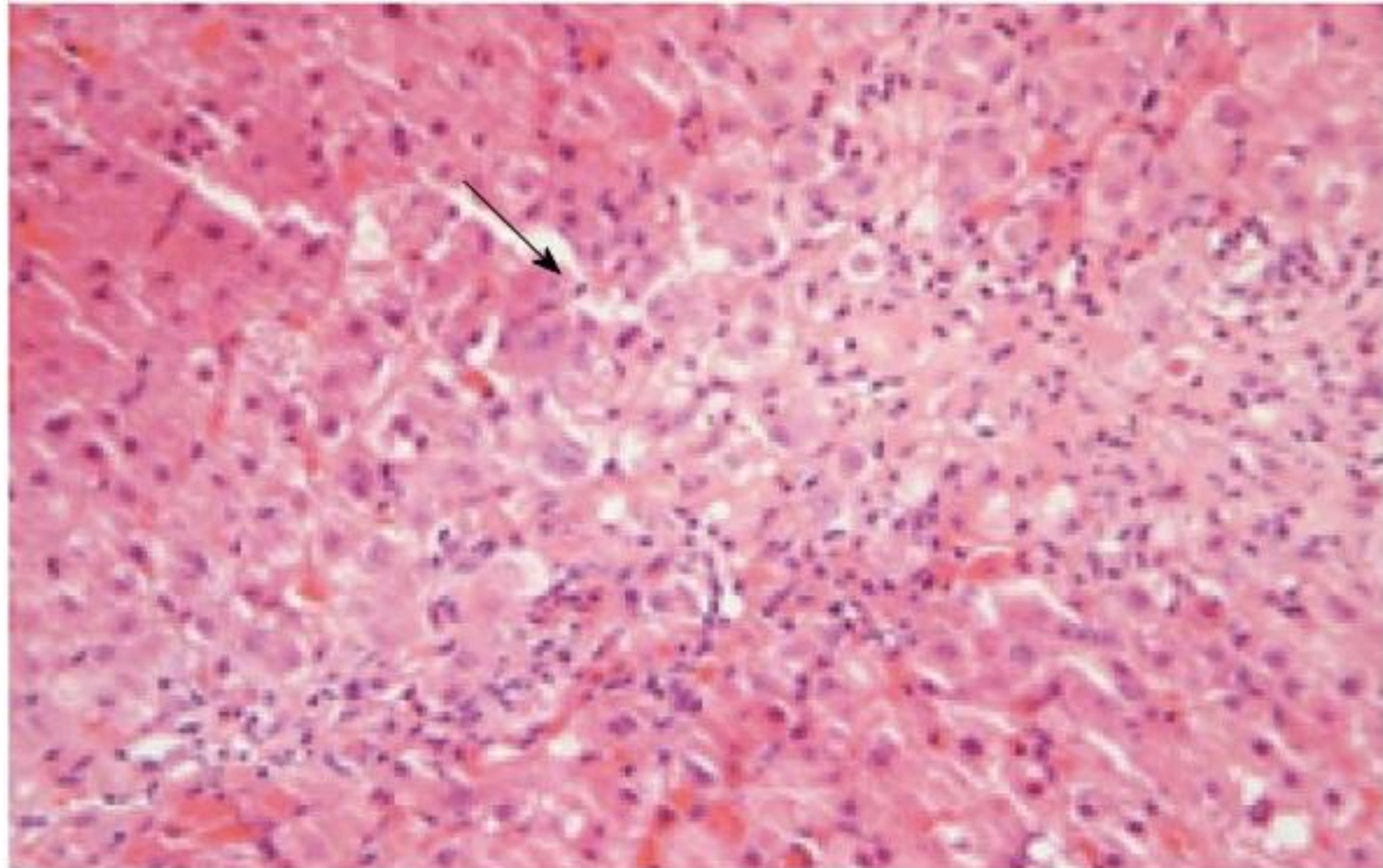


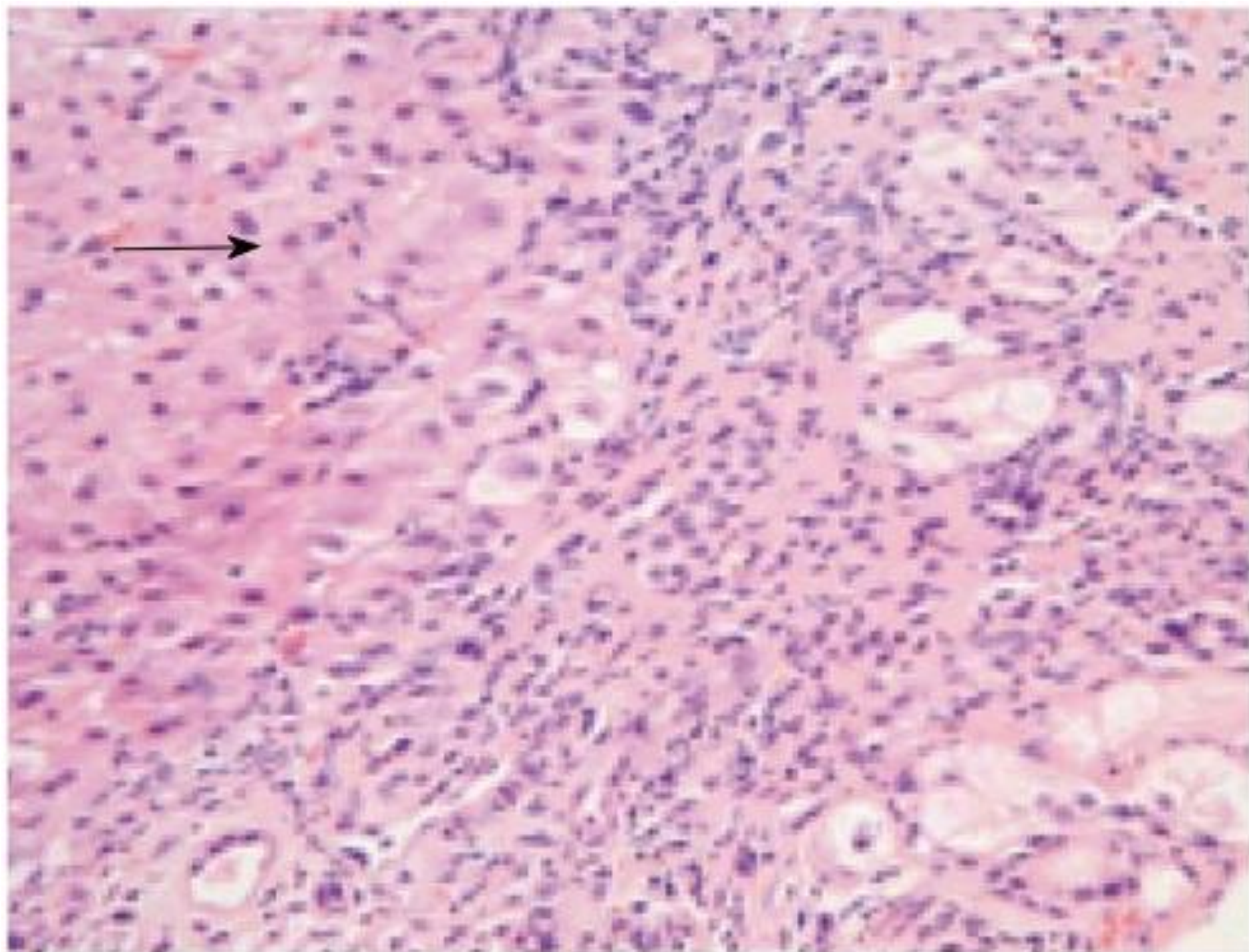
Manns, M. P., Lohse, A. W., & Vergani, D. (2015). Autoimmune hepatitis – Update 2015. *Journal of Hepatology*, 62(1), S100–S111. doi:10.1016/j.jhep.2015.03.005

A





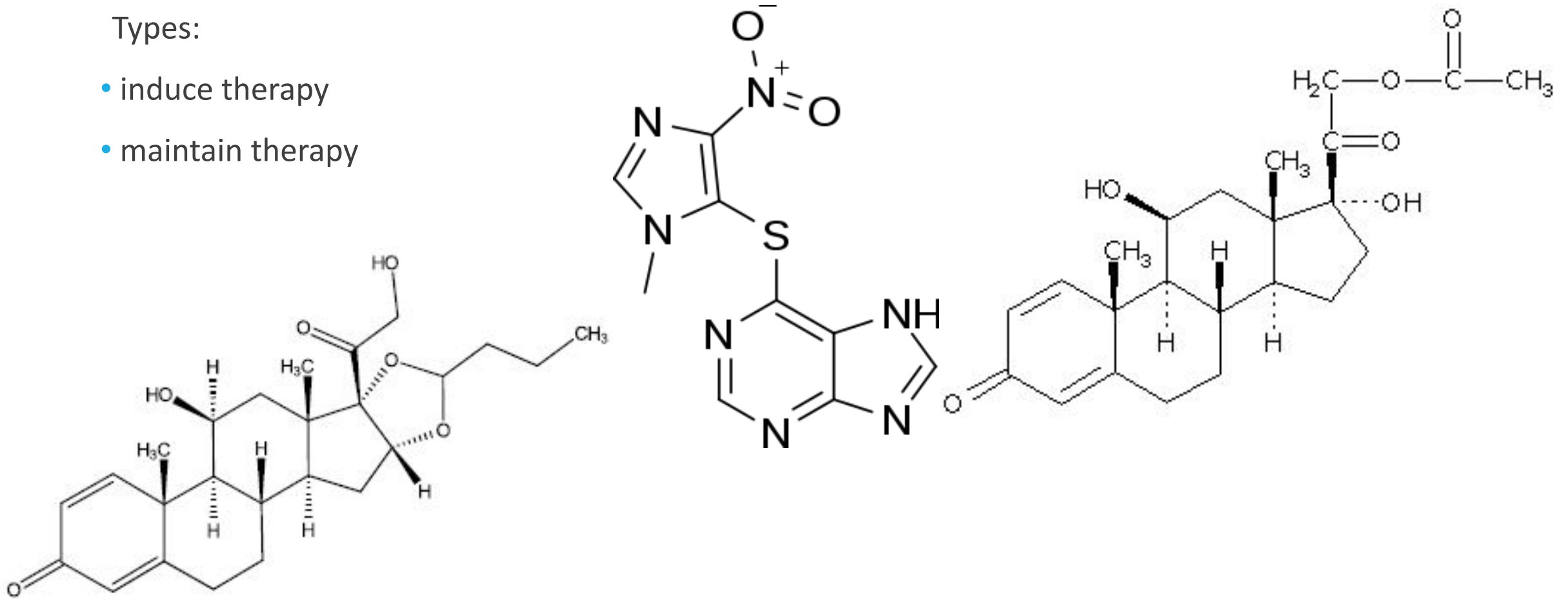




Treatment

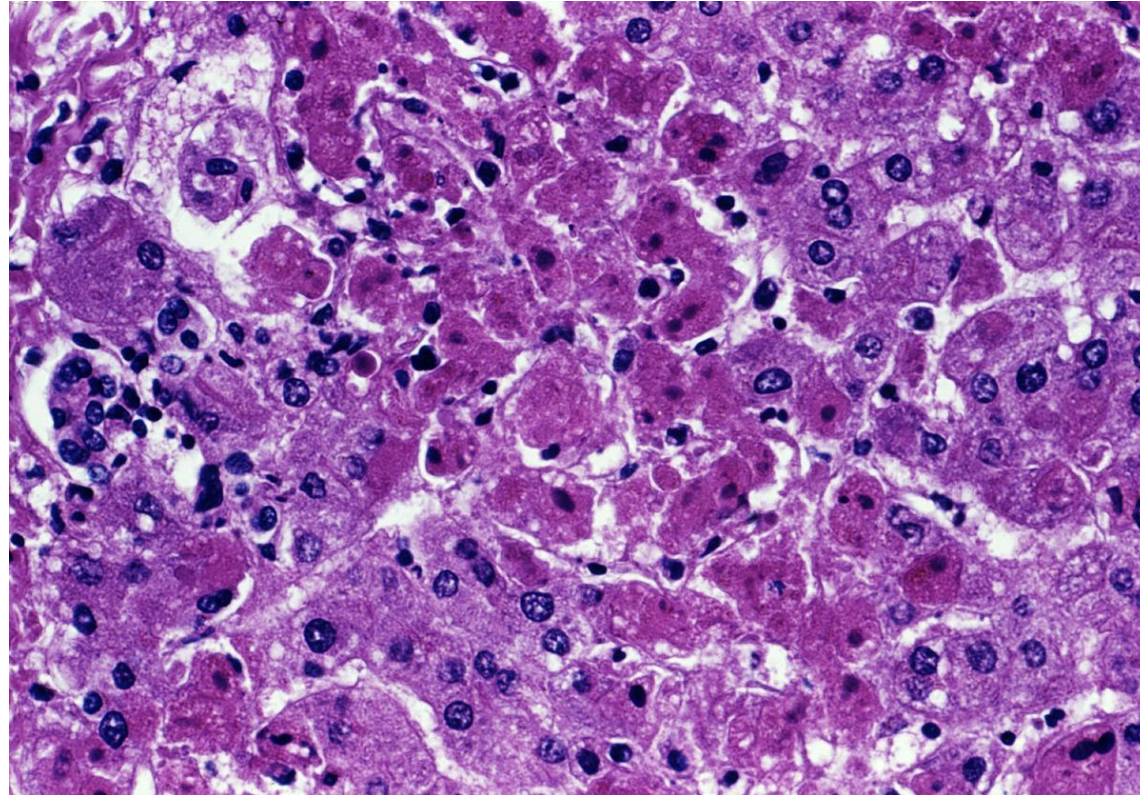
Types:

- induce therapy
- maintain therapy



Outcomes

acute liver failure



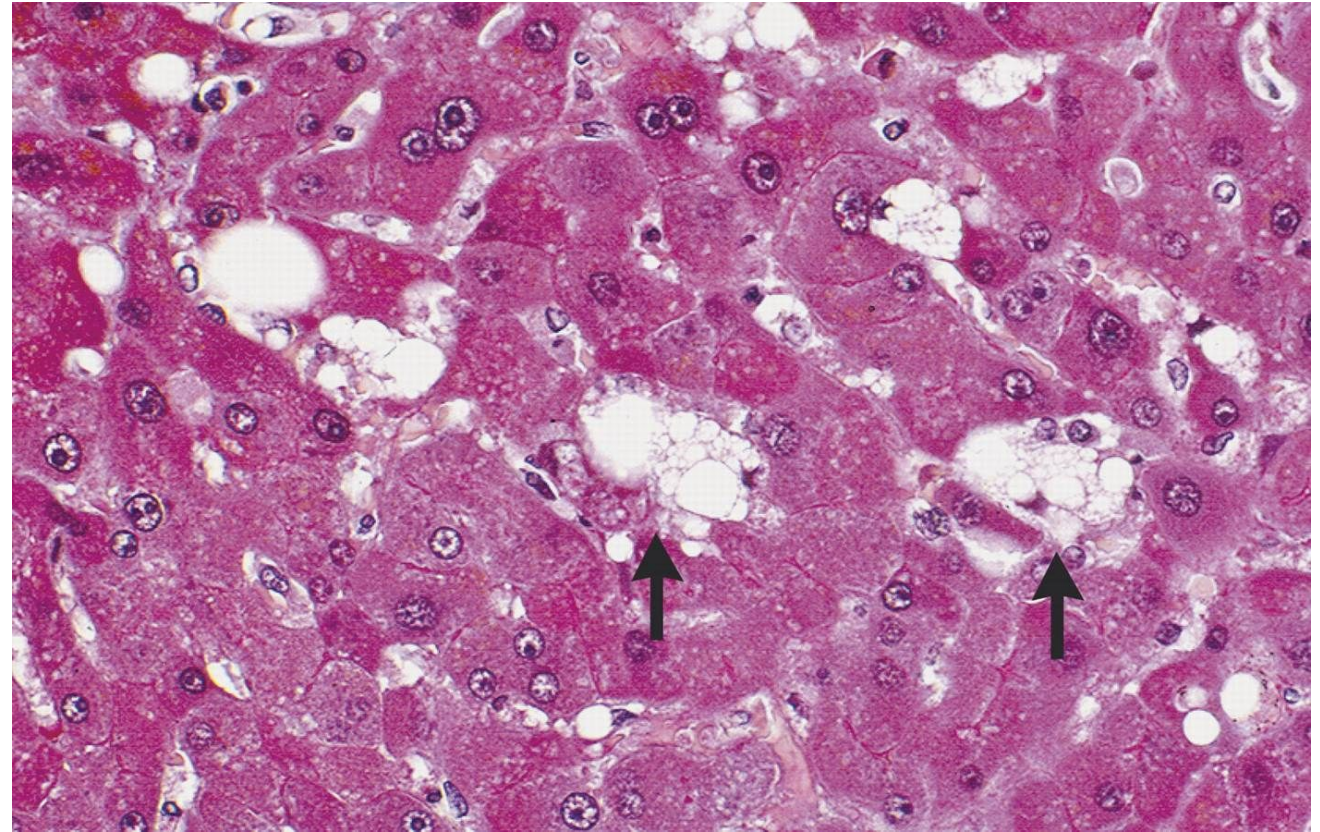
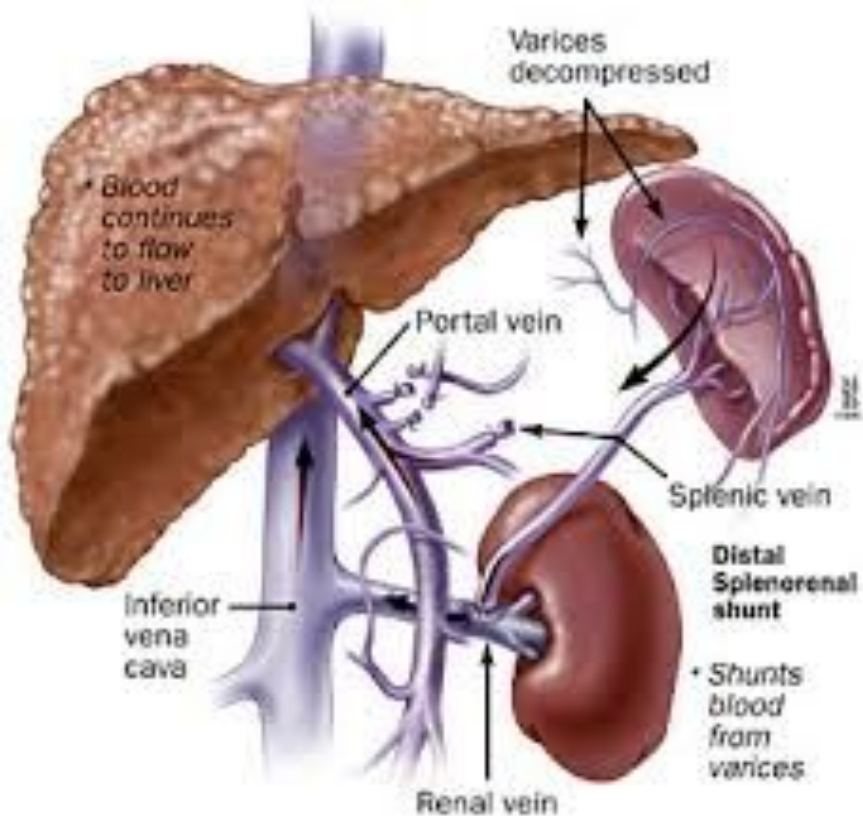
Outcomes

cirrhosis



Outcomes

portal hypertension



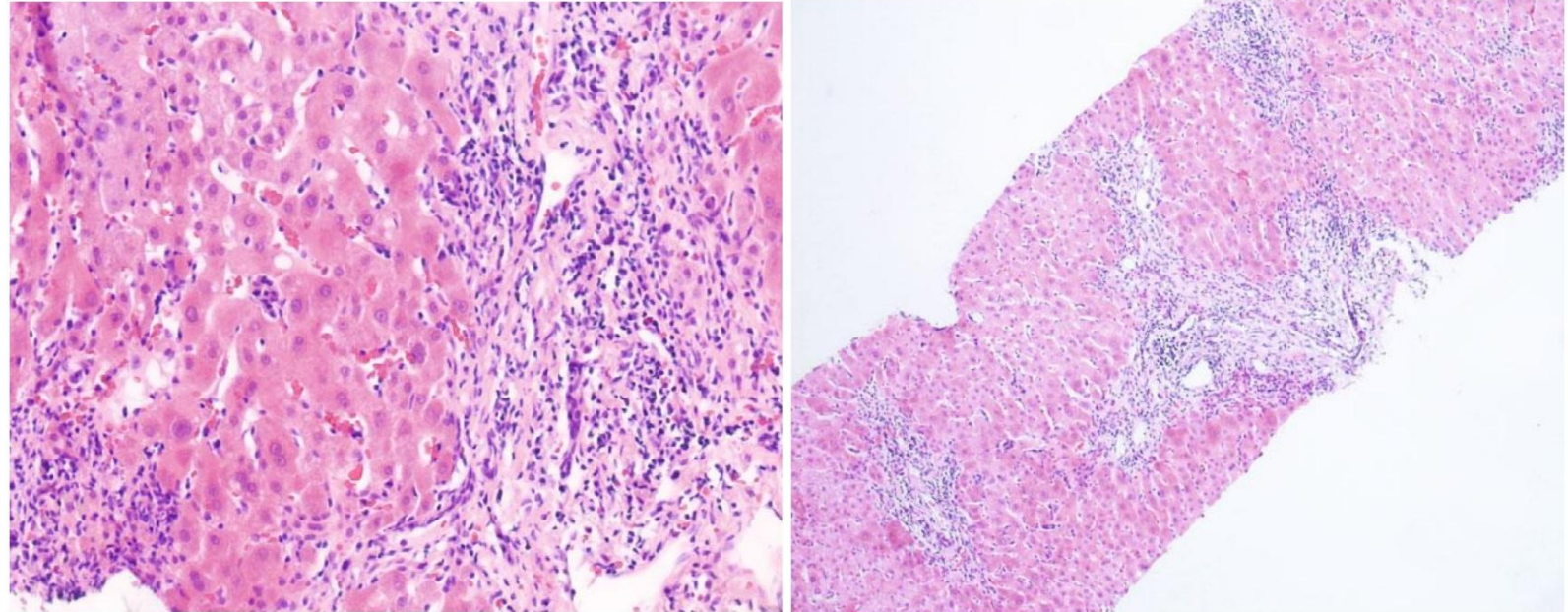
Outcomes

carcinoma



Conclusion

Autoimmune hepatitis is an actual problem, especially among the female population, so it is necessary to develop new ways to diagnose and treat this pathological process. Due to its chronic course, autoimmune hepatitis reduces the quality of life of people with this diagnosis.



Sucher E, Sucher R, Gradistanac T, Brandacher G, Schneeberger S, Berg T. Autoimmune Hepatitis-Immunologically Triggered Liver Pathogenesis-Diagnostic and Therapeutic Strategies. *J Immunol Res.* 2019 Nov 25;2019:9437043. doi: 10.1155/2019/9437043. PMID: 31886312; PMCID: PMC6899271.

References

- 1) Sucher E, Sucher R, Gradistanac T, Brandacher G, Schneeberger S, Berg T. Autoimmune Hepatitis-Immunologically Triggered Liver Pathogenesis-Diagnostic and Therapeutic Strategies. *J Immunol Res.* 2019 Nov 25;2019:9437043. doi: 10.1155/2019/9437043. PMID: 31886312; PMCID: PMC6899271.
- 2) Manns, M. P., Lohse, A. W., & Vergani, D. (2015). Autoimmune hepatitis – Update 2015. *Journal of Hepatology*, 62(1), S100–S111. doi:10.1016/j.jhep.2015.03.005
- 3) Gatselis NK, Zachou K, Koukoulis GK, Dalekos GN. Autoimmune hepatitis, one disease with many faces: etiopathogenetic, clinico-laboratory and histological characteristics. *World J Gastroenterol.* 2015 Jan 7;21(1):60-83. doi: 10.3748/wjg.v21.i1.60. PMID: 25574080; PMCID: PMC4284362.
- 4) Manns MP, Lohse AW, Vergani D. Autoimmune hepatitis--Update 2015. *J Hepatol.* 2015 Apr;62(1 Suppl):S100-11. doi: 10.1016/j.jhep.2015.03.005. PMID: 25920079.
- 5) Sahebjam F, Vierling JM. Autoimmune hepatitis. *Front Med.* 2015 Jun;9(2):187-219. doi: 10.1007/s11684-015-0386-y. Epub 2015 Mar 6. PMID: 25749982.
- 6) Cooke, R. A. & Stewart, B. *Colour atlas of anatomical pathology.* (Churchill Livingstone, 2004).

Thanks for your
attention!