

# Honda Fit Turbo Kit

## Installation Manual



Take off windshield wiper



Take this part off



Take off the engine of windshield wiper



Uninstall the protecting hood



Take off the front bumper



Take off the stock manifold



Remember to keep the stock O<sub>2</sub> Sensor that you take off





Take off the stock mid-pipe



Remember to keep the stock O<sub>2</sub> Sensor that you take off



Install manifold on the turbocharger



Please note this particular bolt should be locked from the bottom up, so it doesn't block another bolt beside it. Other 3 bolts are locked the normal way from top.



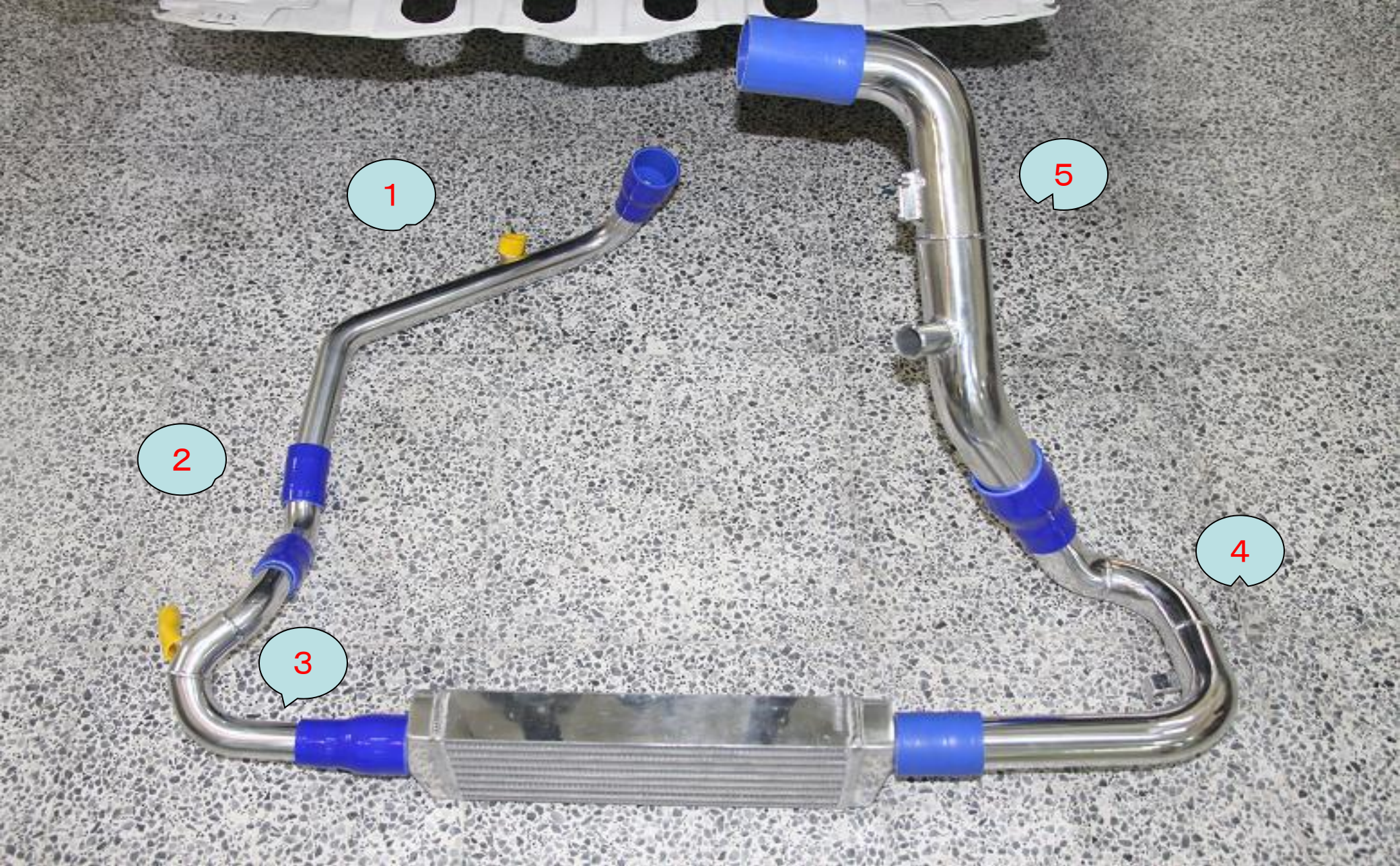
Install the silicon hose first, remember the turbo clamp, too



Turbocharger can be installed from this angle

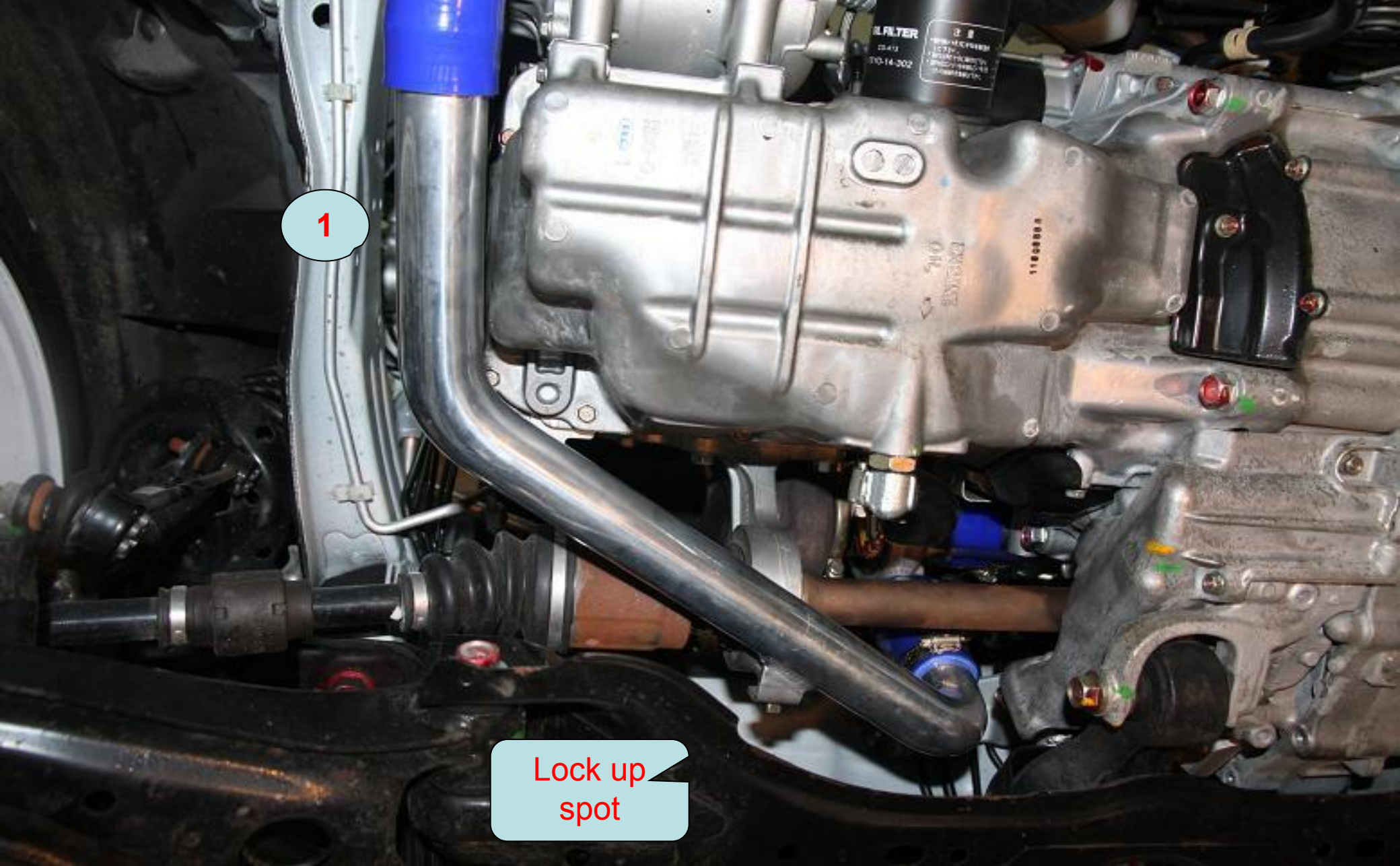


Connect compressor housing inlet and air filter with Aluminum pipe



Please assemble the pipes according to the specified order above





Aluminum Pipe 1



2

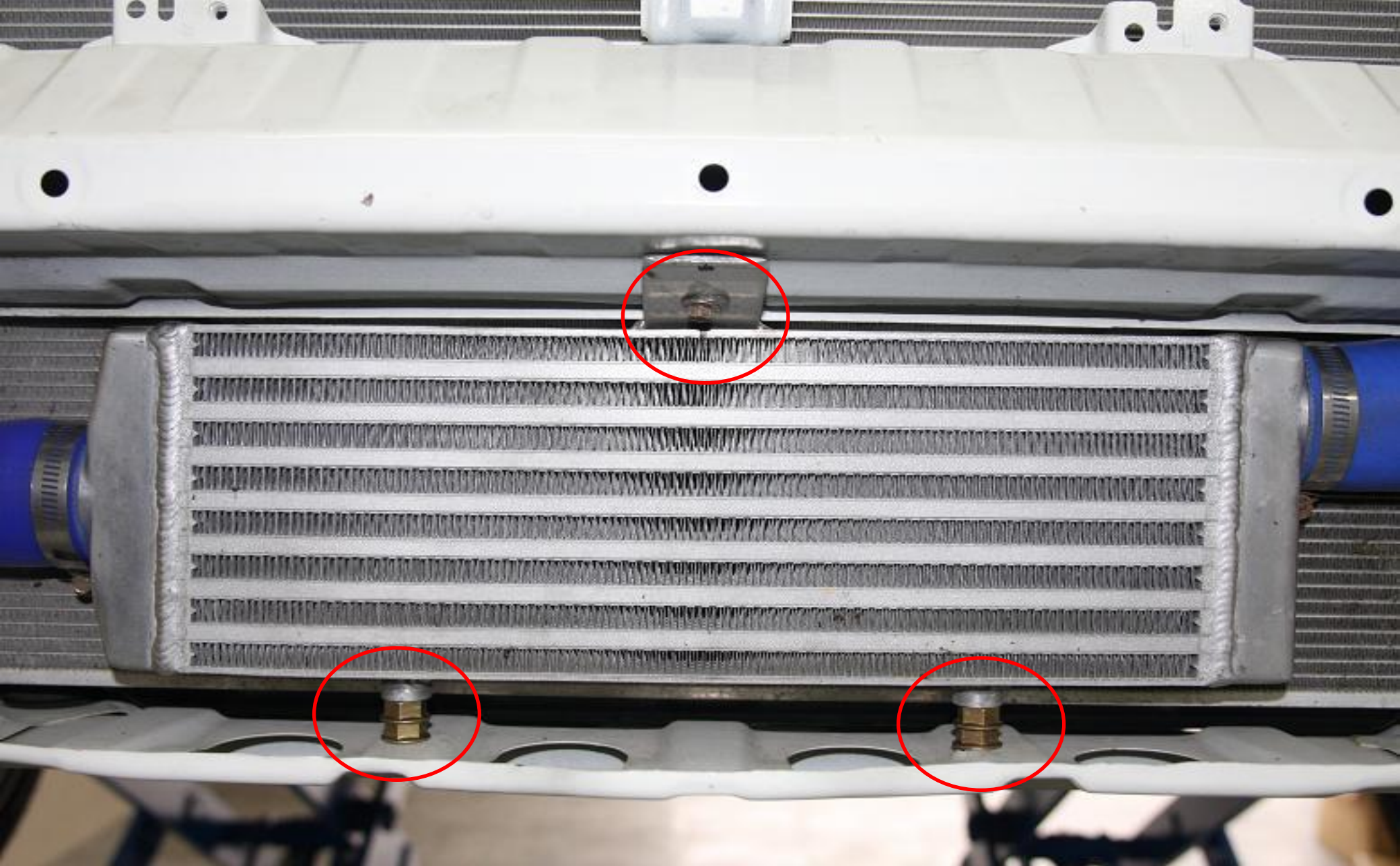
Aluminum Pipe 2



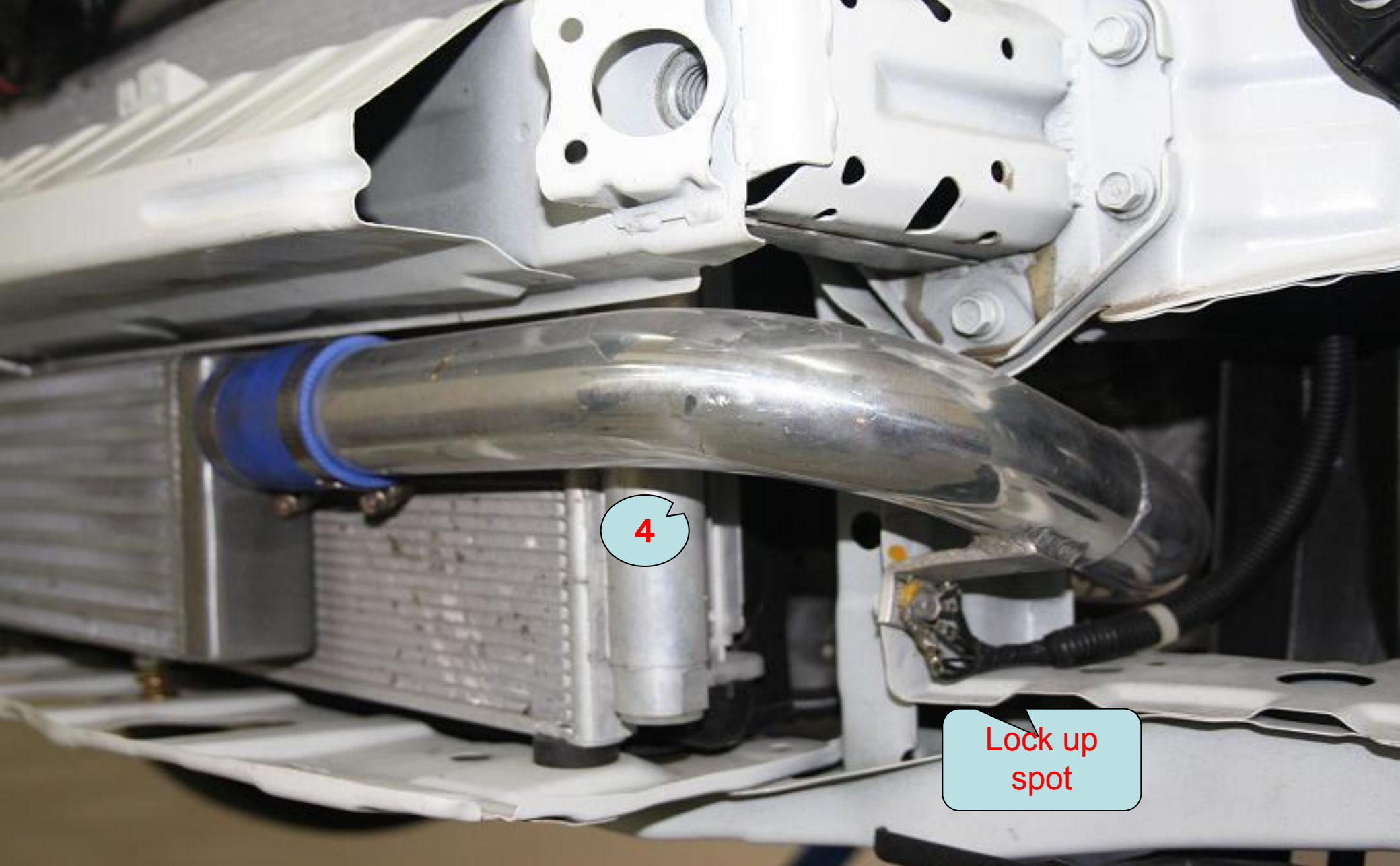
Lock up  
spot

3

Aluminum Pipe 3



Install intercooler, please pay attention to the 3 lock up spots.



4

Lock up spot

Aluminum Pipe 4

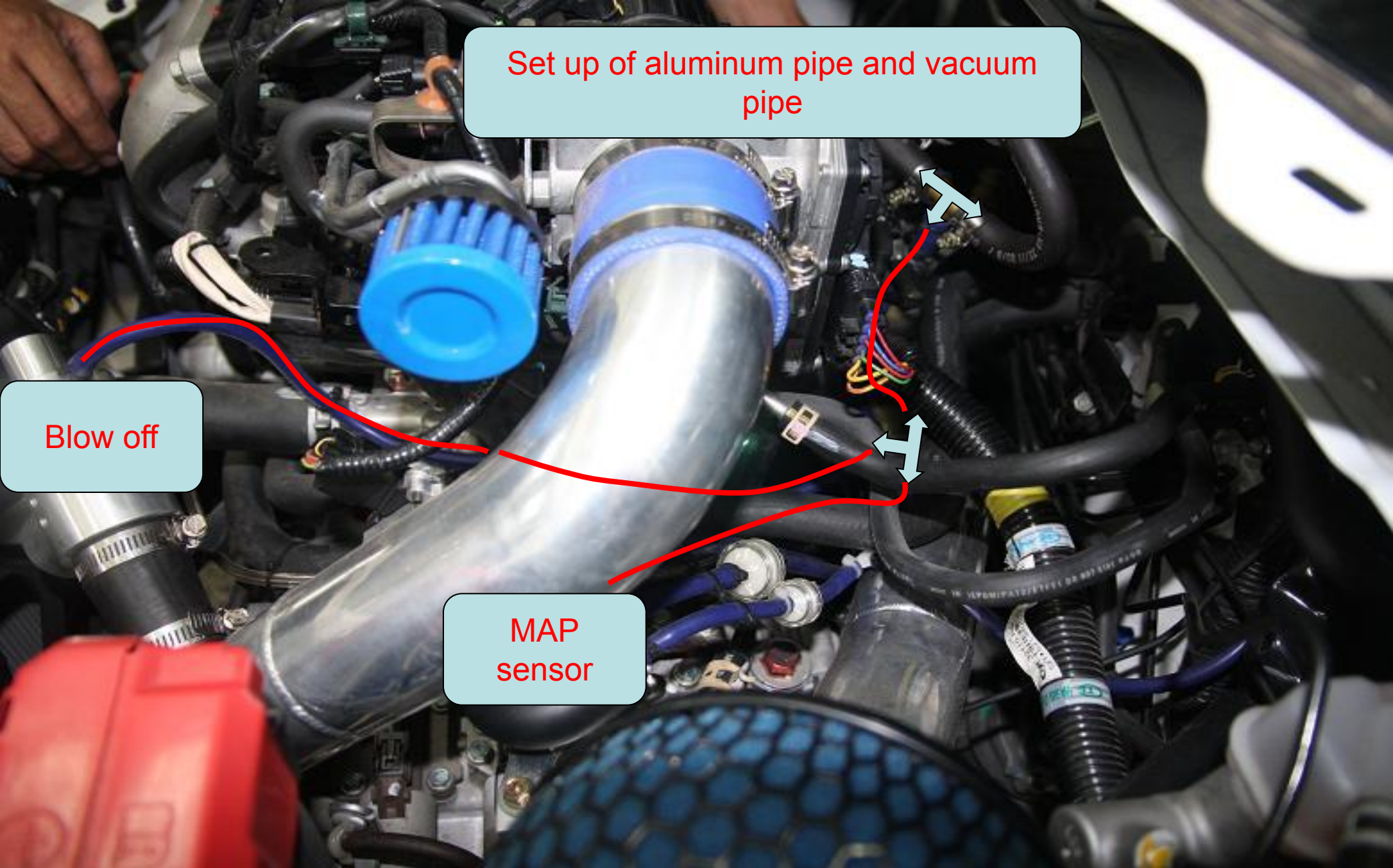


Install the smaller air filter

Install blow off

5

Aluminum Pipe 5



Set up of aluminum pipe and vacuum pipe

Blow off

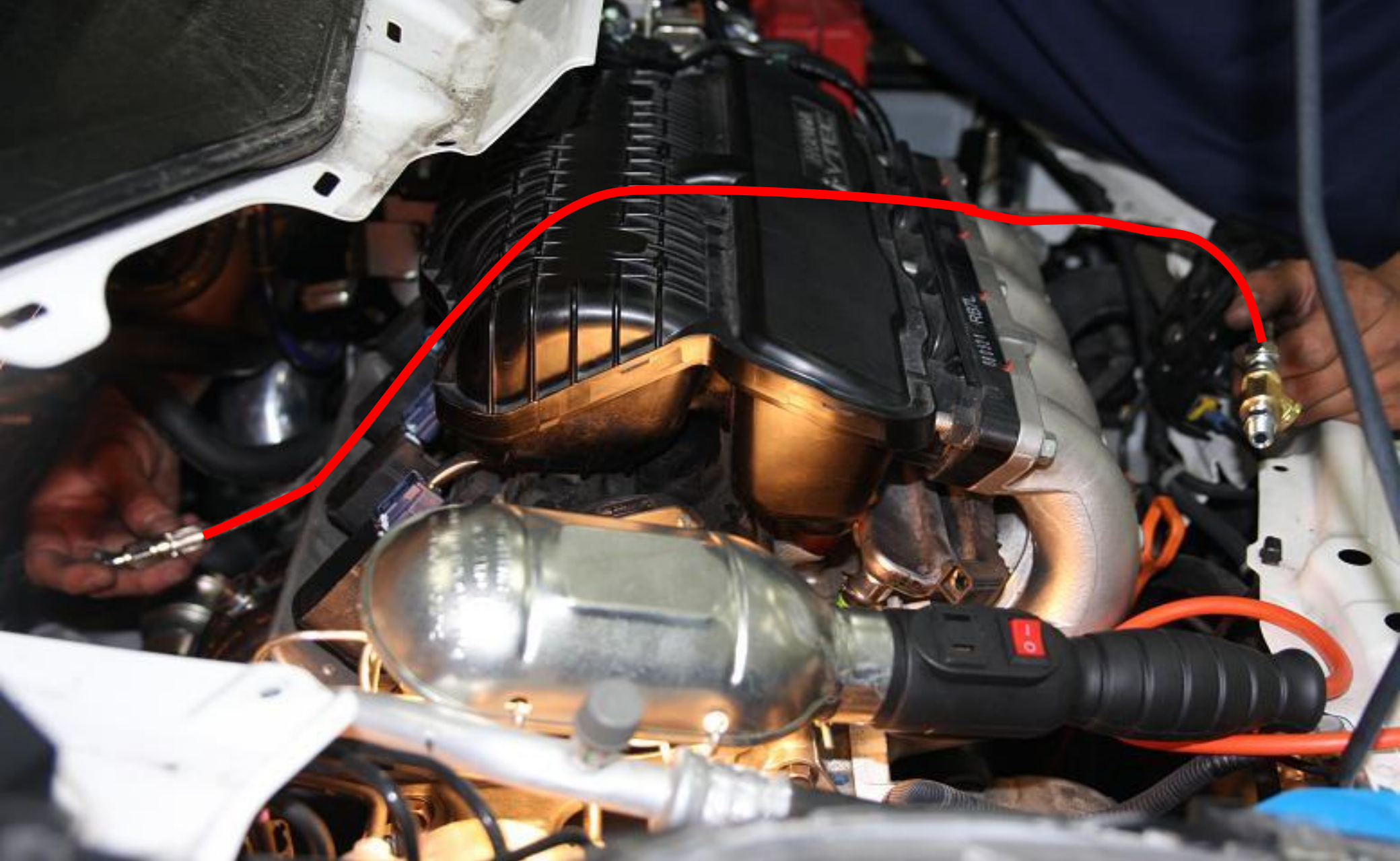
MAP sensor

Install vacuum pipe

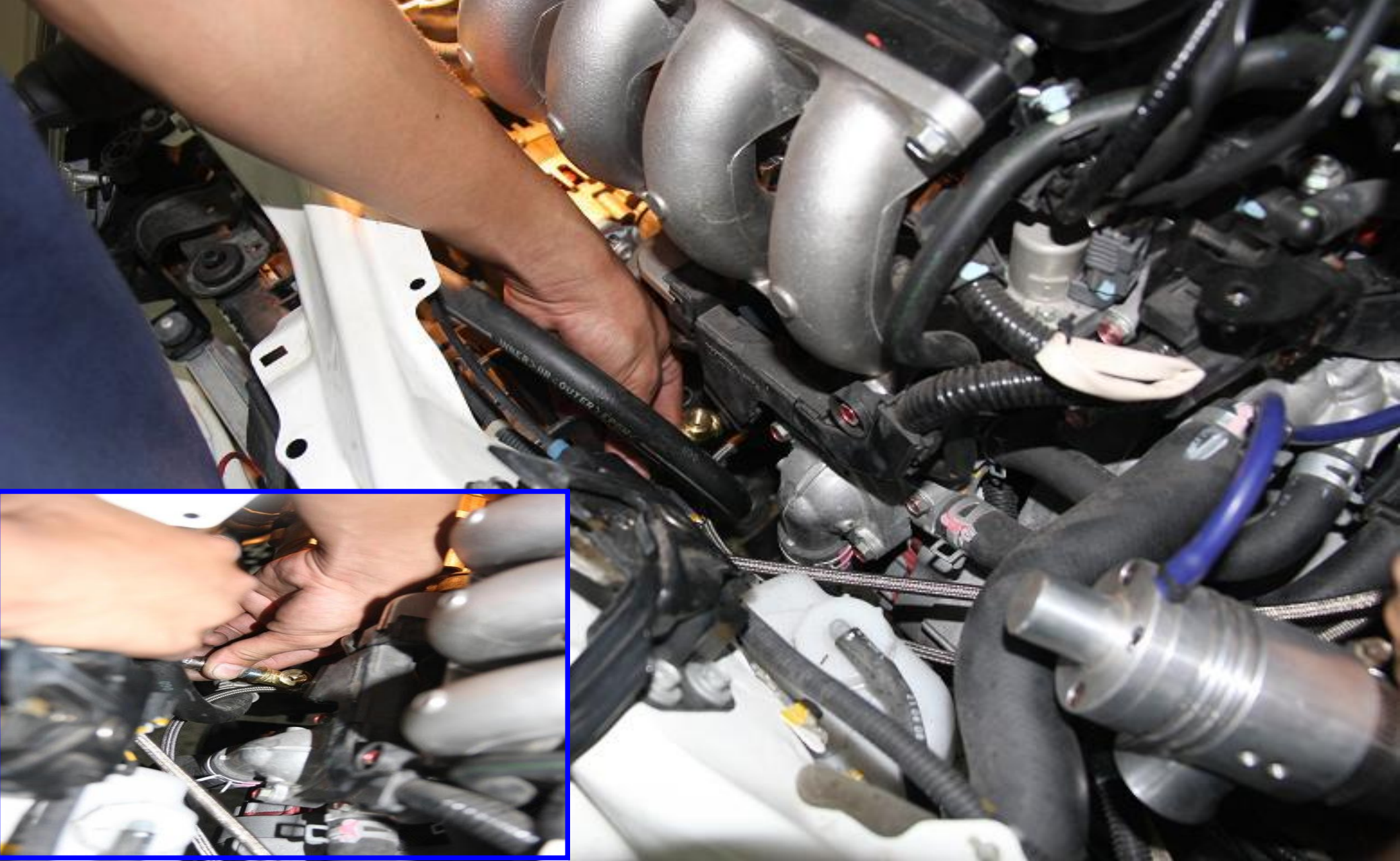


Install oil feed line





Oil feed line set up



Connection of oil feed line on the engine side



Install oil drain pipe



Install front pipe



Connect O<sub>2</sub> Sensor  
onto mid pipe first,  
then install both  
onto to car

Install mid pipe



Remember to connect O<sub>2</sub> Sensor



Install the protecting hood back up



Install engine of windshield wiper back up





Put the cover back



Install windshield wiper back on



Put the front bumper back

THE END