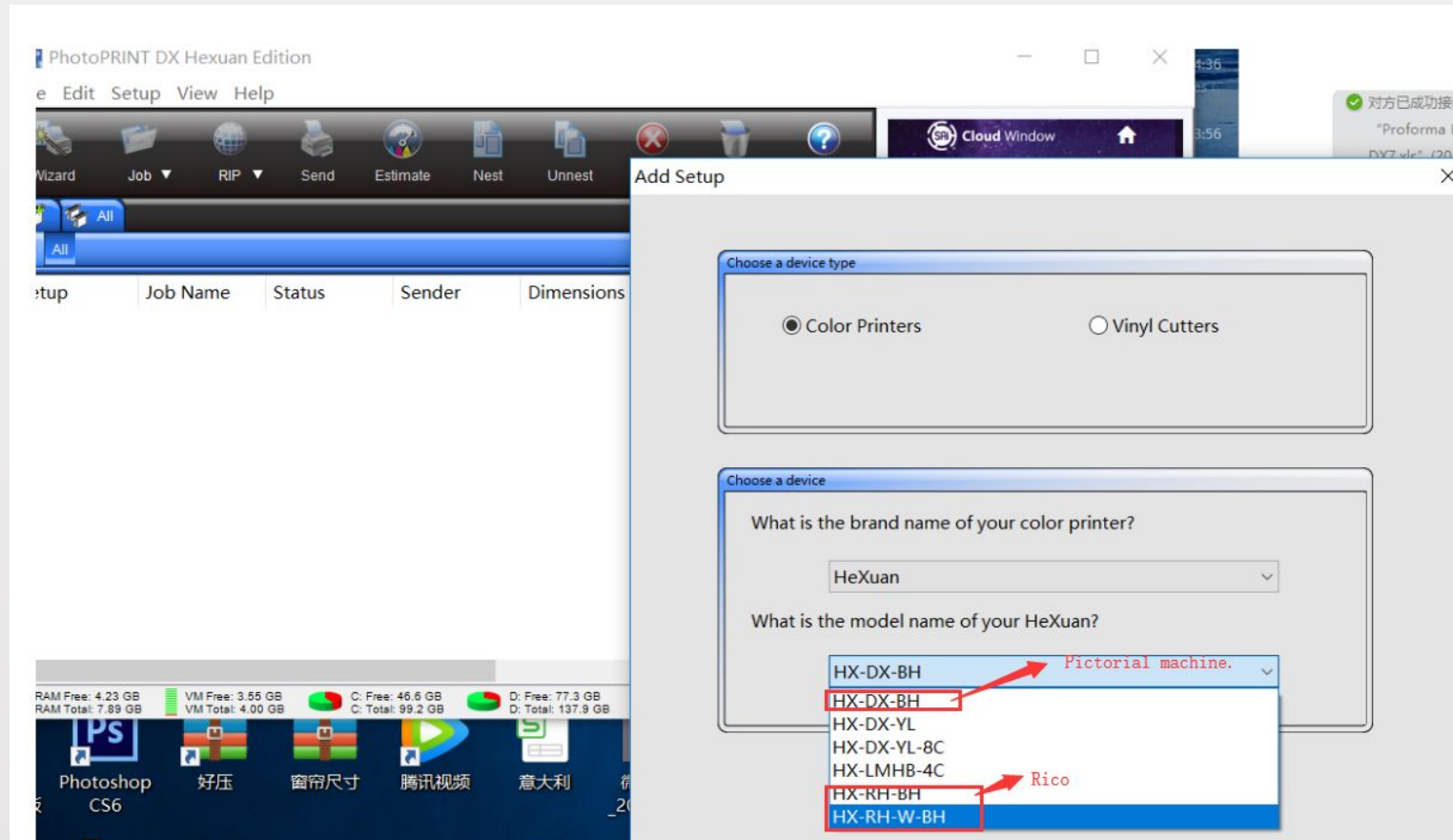


**Install photo print. This interface will be available for the first time.**



# Installation drive completed

What do you want to call your new setup?

HX-DX-BH

Do you want to print to your HX-DX-BH from other applications?

Yes, install the desktop driver

How is your HX-DX-BH connected to your computer?

FILE:

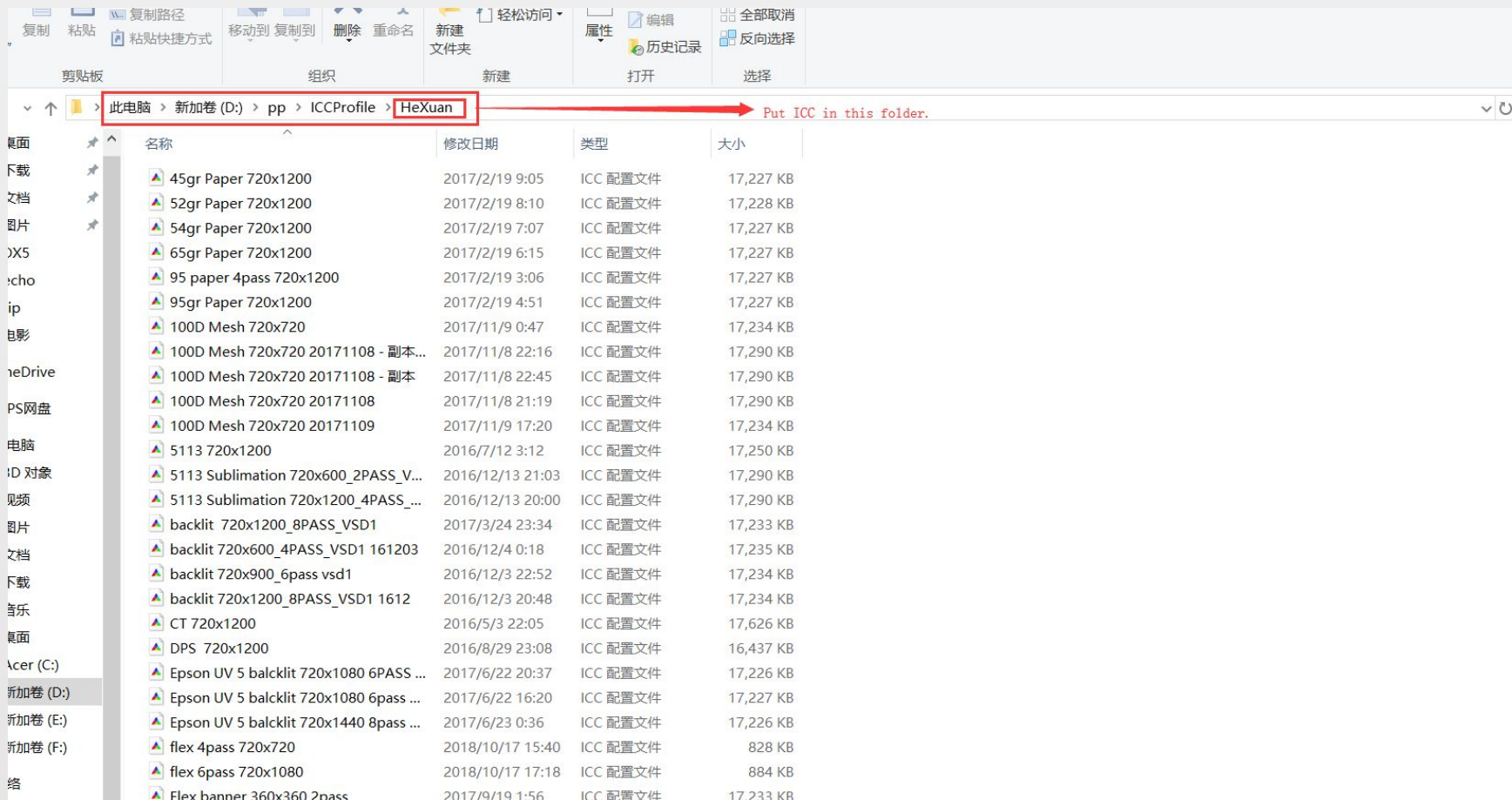
Prompt for file path for each file

Use custom extension:

Default location

D:\pp\Jobs and Settings

# Add ICC

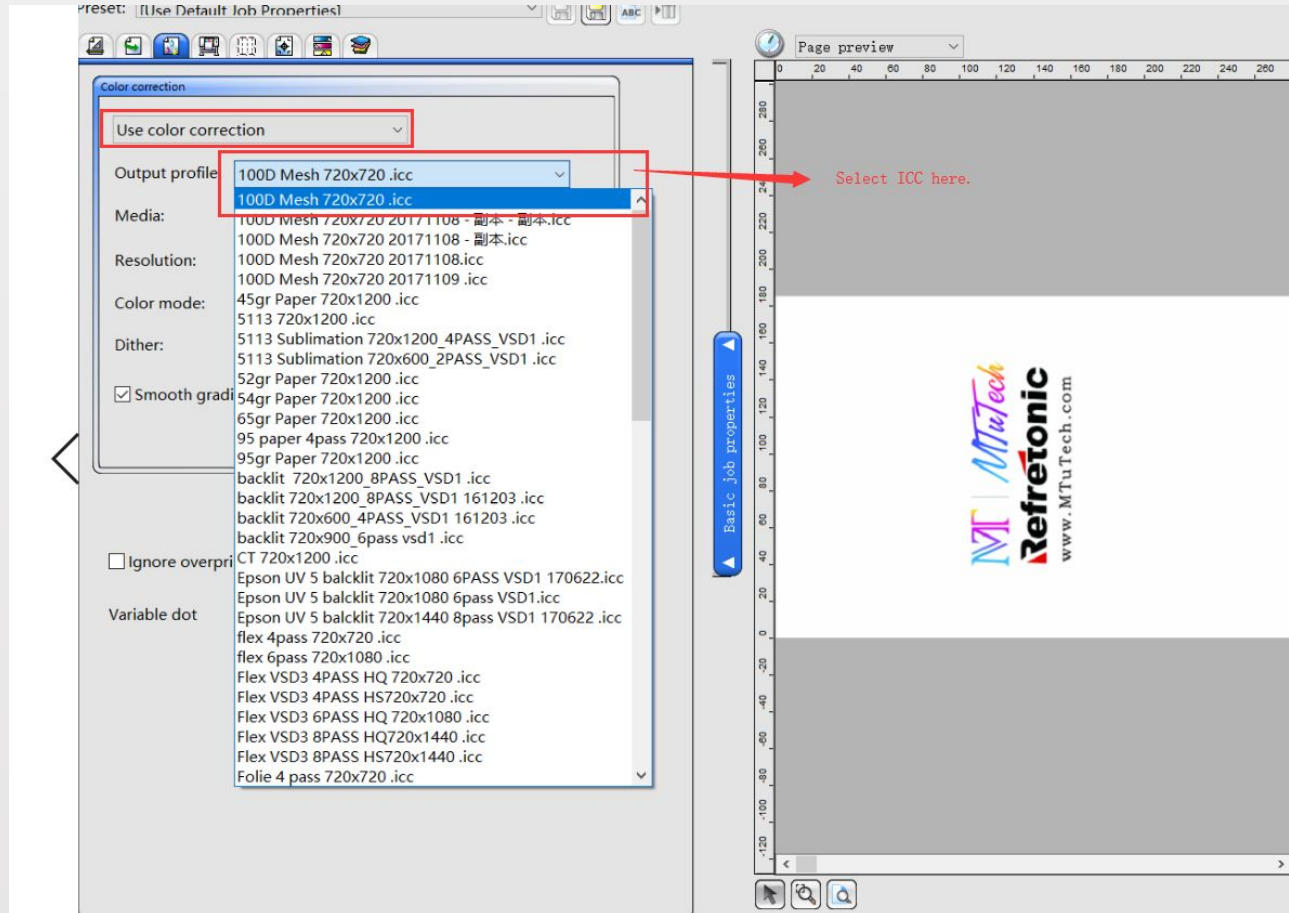


# Set up print job

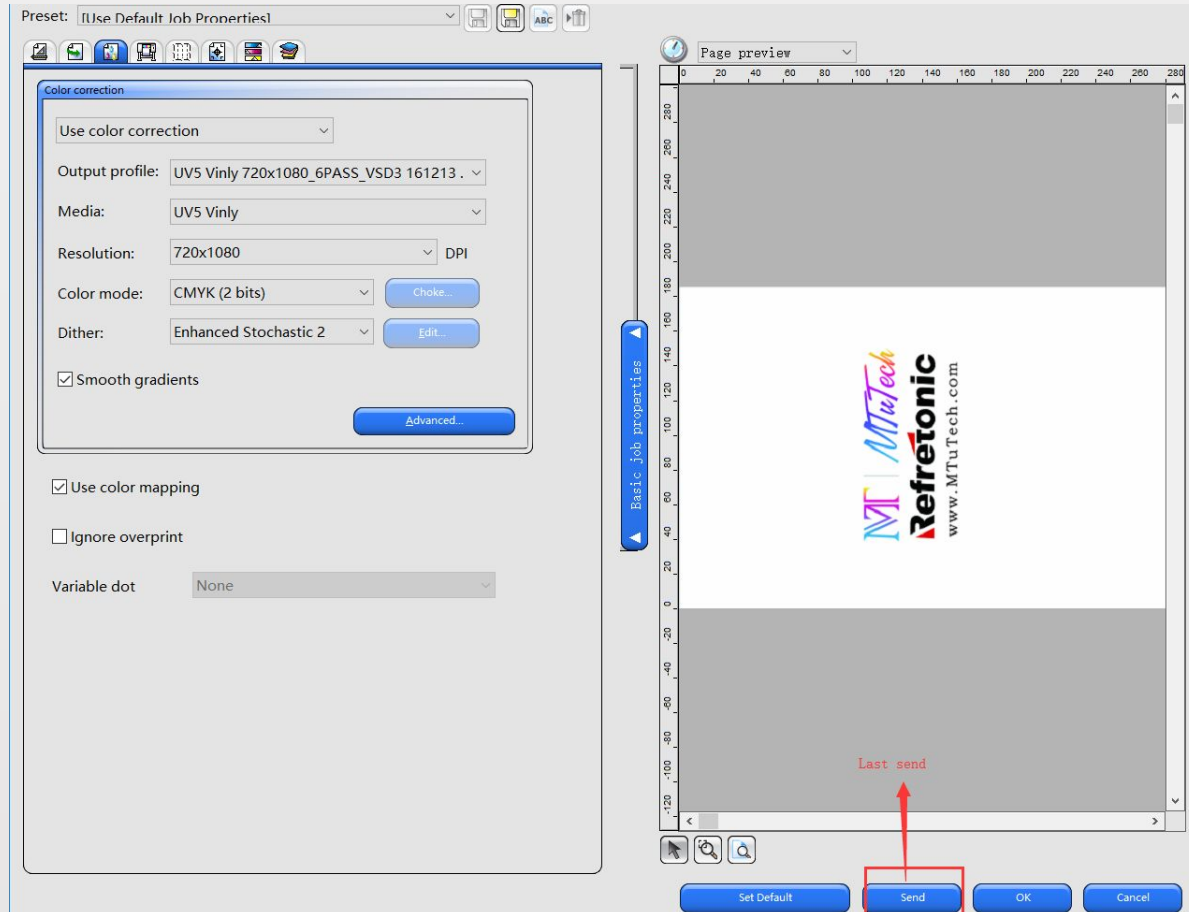
The screenshot shows a software interface for setting up a print job. The interface is divided into several sections on the left and a preview area on the right.

- Media size:** Shows a dropdown menu with "196.850 x 4000.000in". Below it are input fields for width (500.000cm) and height (10160.000cm). A red box highlights the width field, and a red arrow points to it with the text "The size of the machine."
- Job size:** Shows input fields for width (280.000cm) and height (184.997cm), and percentage fields (both 100.000%). A red box highlights the width field, and a red arrow points to it with the text "The size of the job." Below these are checkboxes for "Fit to media" (unchecked) and "Proportional" (checked). A red arrow points to the "Proportional" checkbox with the text "This does not move." The total size is listed as "Total size: 280.000cm x 184.997cm".
- Position:** Shows input fields for left and top offsets, both set to 0.000cm.
- Copies:** Shows input fields for the number of copies (1) and a spacing value (0.254cm). A red box highlights the number of copies field, and a red arrow points to it with the text "Copy."
- Page nesting:** A checkbox labeled "Page nesting" is checked.
- Direction of printing:** Two checkboxes, "F" and "R", are shown. A red arrow points to the "F" checkbox with the text "Mirror image." Another red arrow points to the "R" checkbox with the text "Direction of printing."
- Reset:** A blue button labeled "Reset" is located at the bottom of the settings panel.
- Layout preview:** A large area on the right shows a preview of the print job. It includes a horizontal ruler at the top and a vertical ruler on the left. A small rectangular area in the bottom right corner of the preview shows the "MTI Refretonic" logo and website address.

# Select ICC



# Send job



## Save it and select it in print manger.

