

**ITMO UNIVERSITY**

St. Petersburg, 2018

# Composition

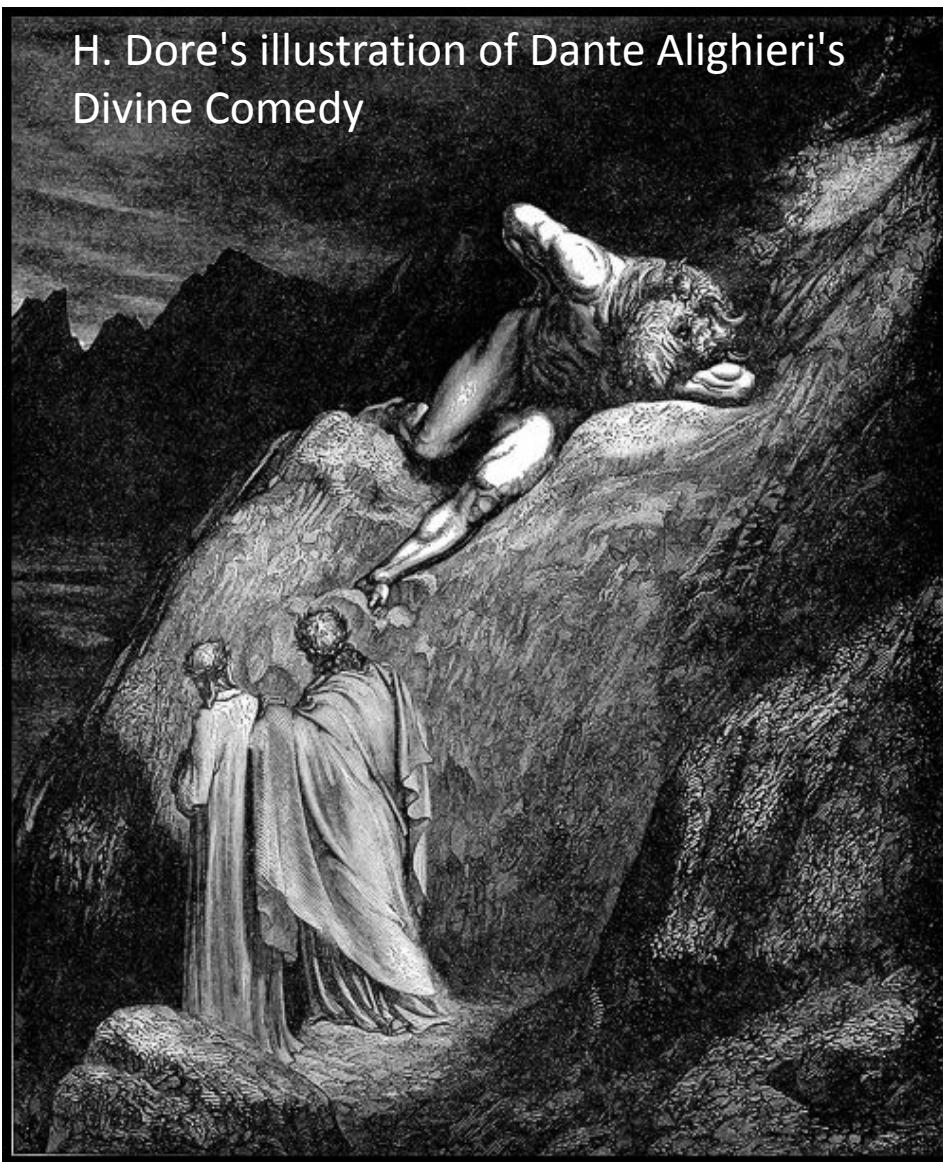
Autor: Bezbakh Yulia



# Composition

- Form and placement
- Contrast
- Rhythm

H. Dore's illustration of Dante Alighieri's  
Divine Comedy





1919

MODES ET MANIÈRES D'AUJOURD'HUI

PL. II



LE MATIN DANS LE PARC





E. Bulatov, O. Vasiliev "Cinderella"



07 Unpublished

# Design with Patience

■ The Design Genome Project  
by InVision

Edison bulb organic gastropub lomo. Austin snackwave kitsch bicycle rights  
literally twee celiac copper mug pok pok farm-to-table waistcoat migas





08 Herman  
Miller

# Design heritage

■ The Design Genome Project  
by InVision

Fb  
Tw  
Ln

If ever a company had design in its DNA, it's **Herman Miller**. Founded in 1905, Herman Miller is known around the world for iconic designs,





Intuit

# Designs for delight

■ The Design Genome Project  
by InVision

For years, Caitlin Flint's mom did her taxes. As a design lead at Intuit, Caitlin wanted to help everyone feel the confidence she felt in her tax



01 IBM

■ The Design Genome Project  
by InVision

# Restless reinvention



Chichester Canal, 1828,  
William Turner

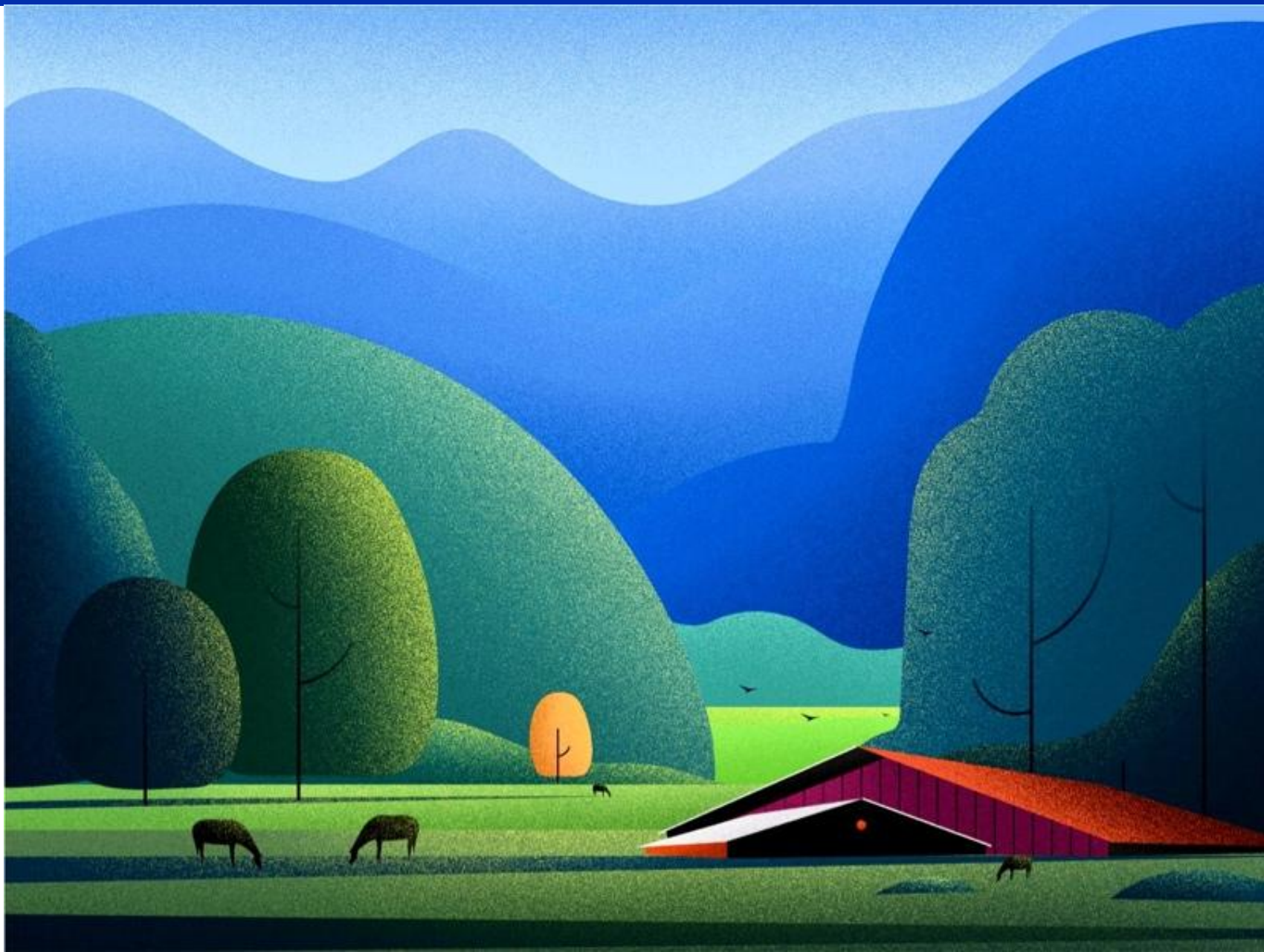




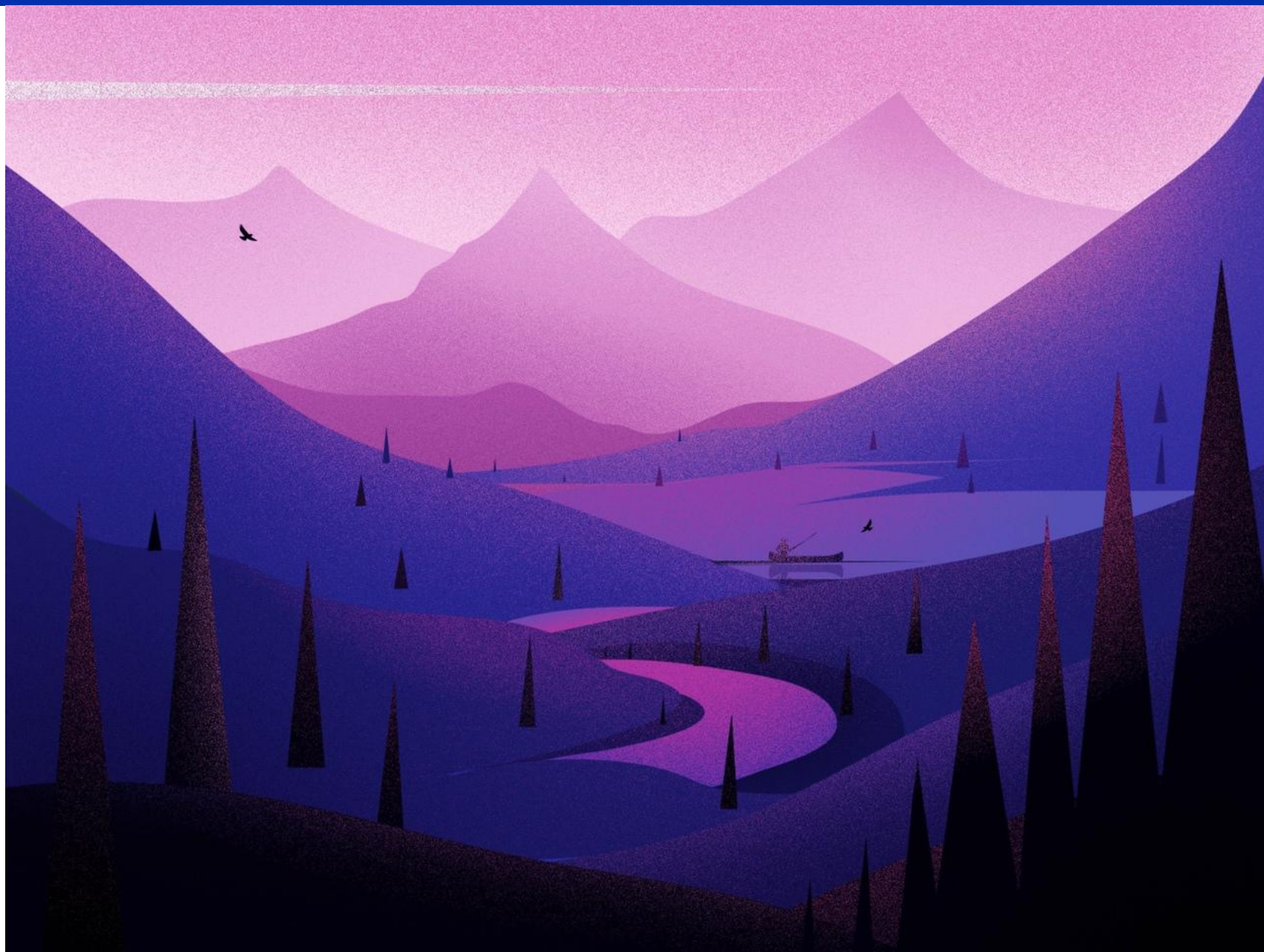






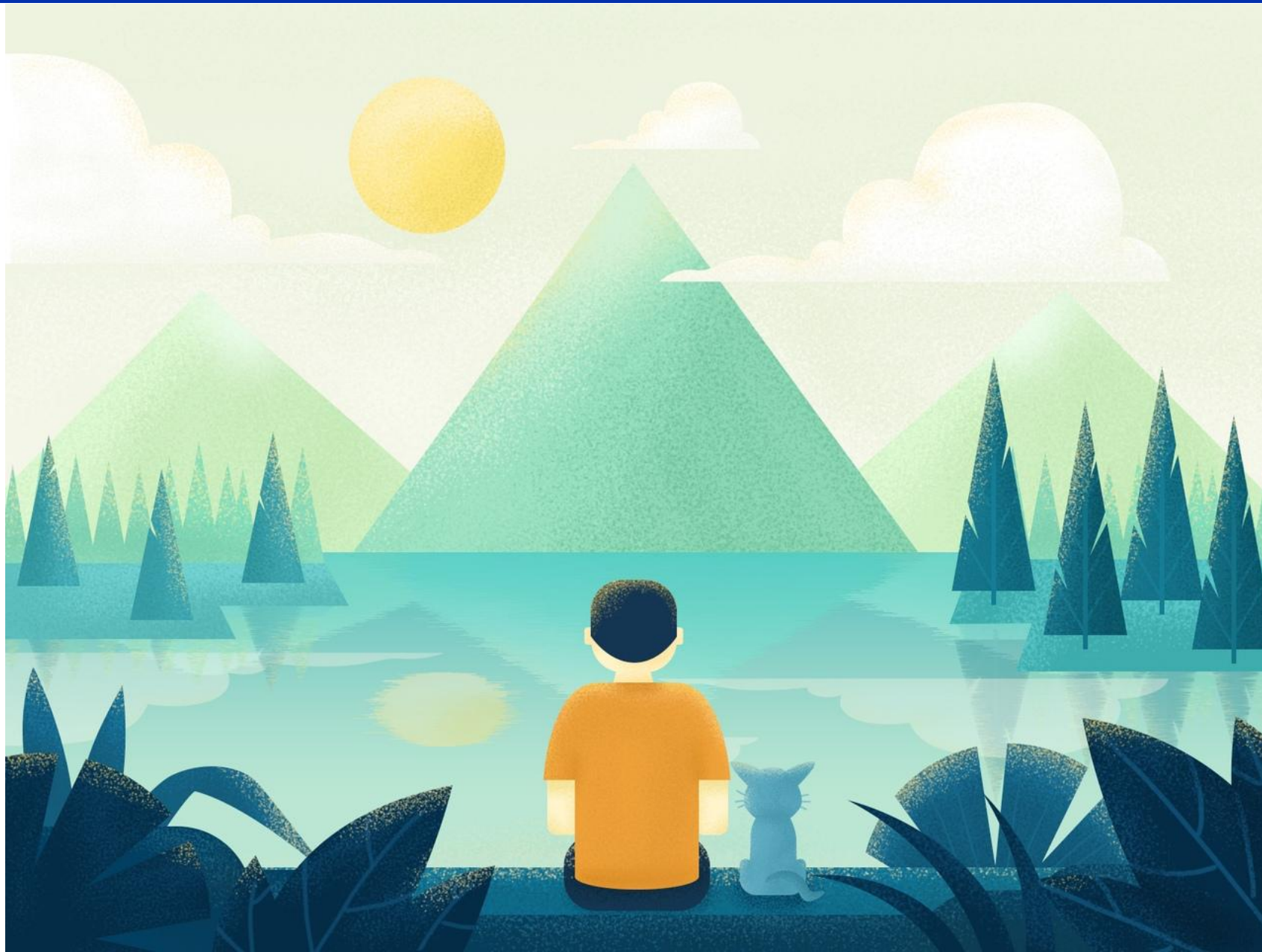






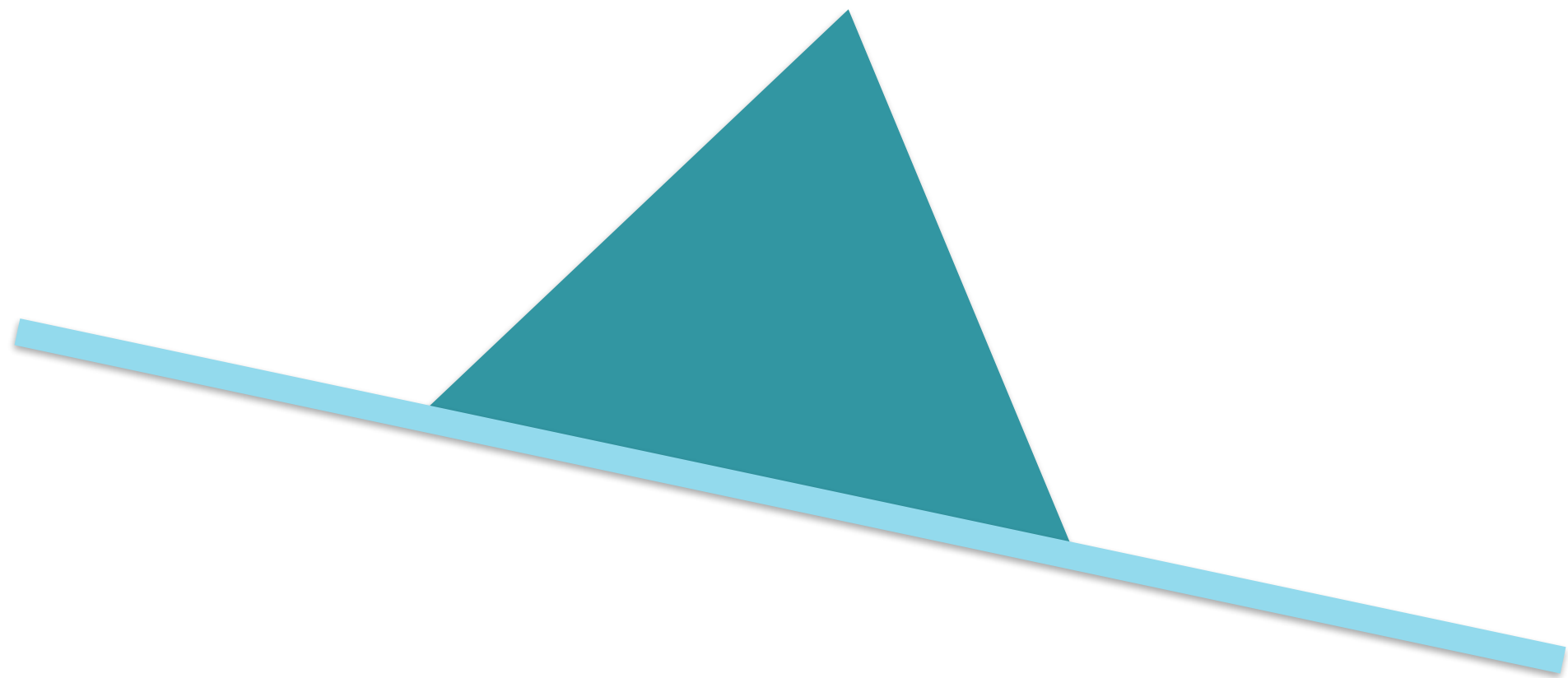
# Form

---



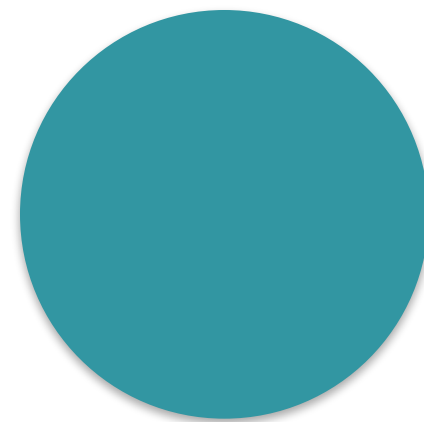
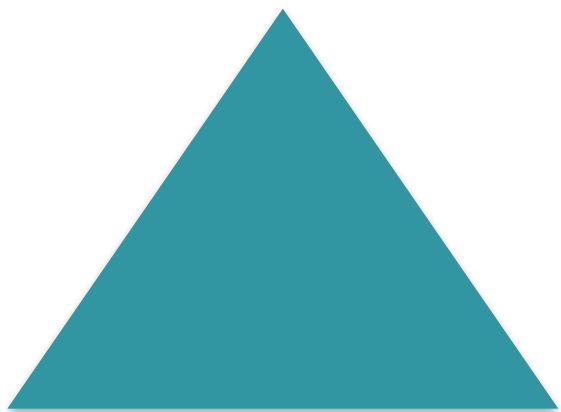




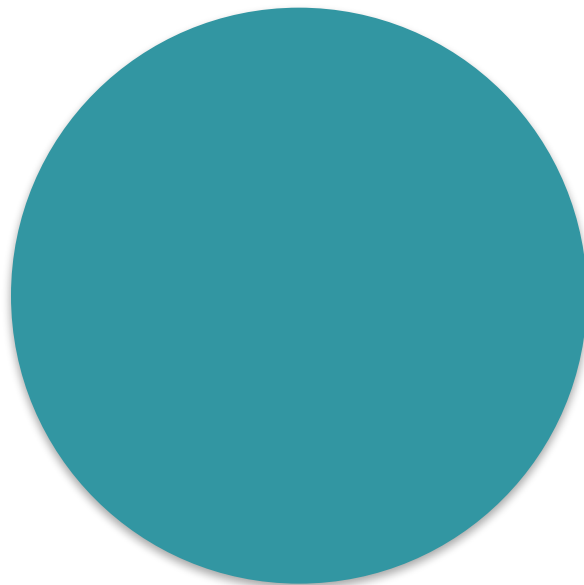


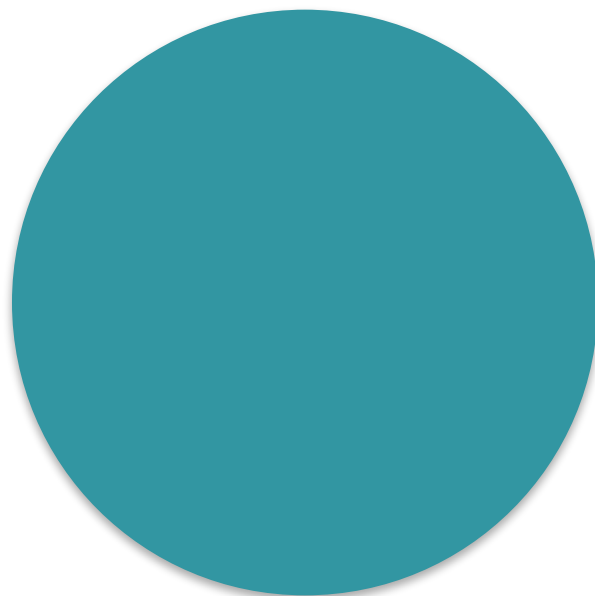




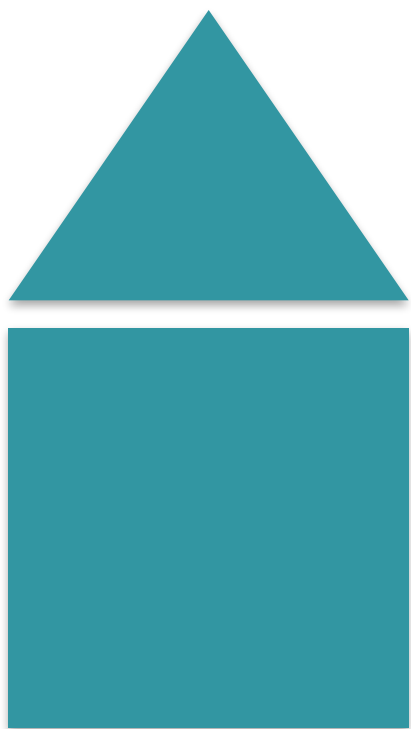


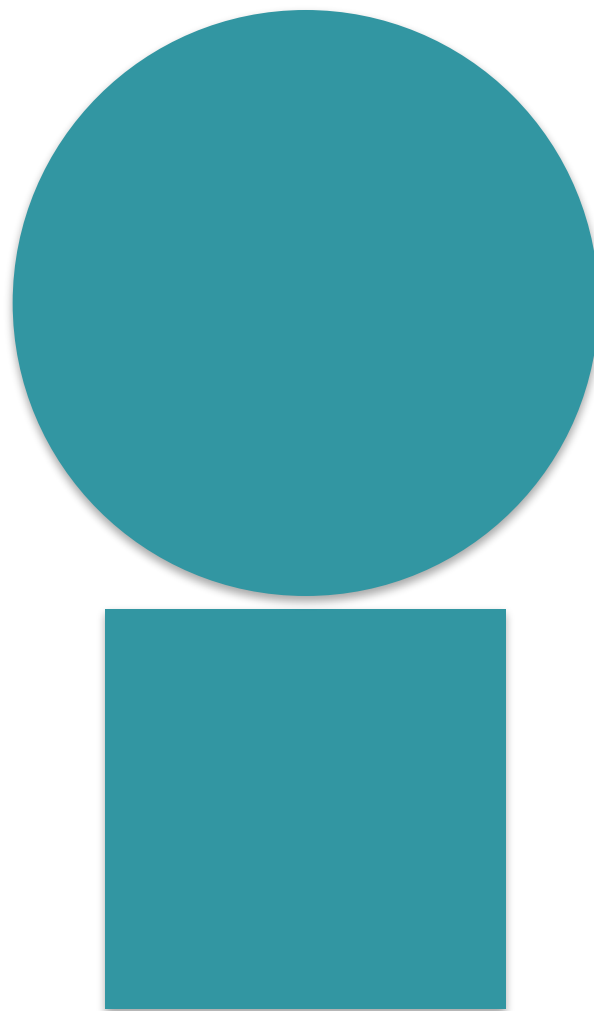


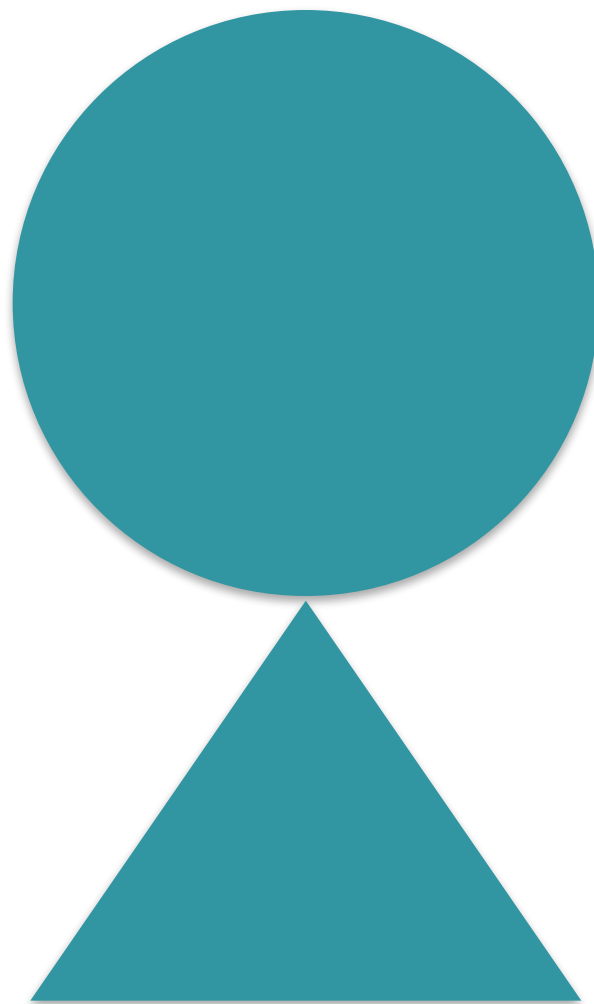






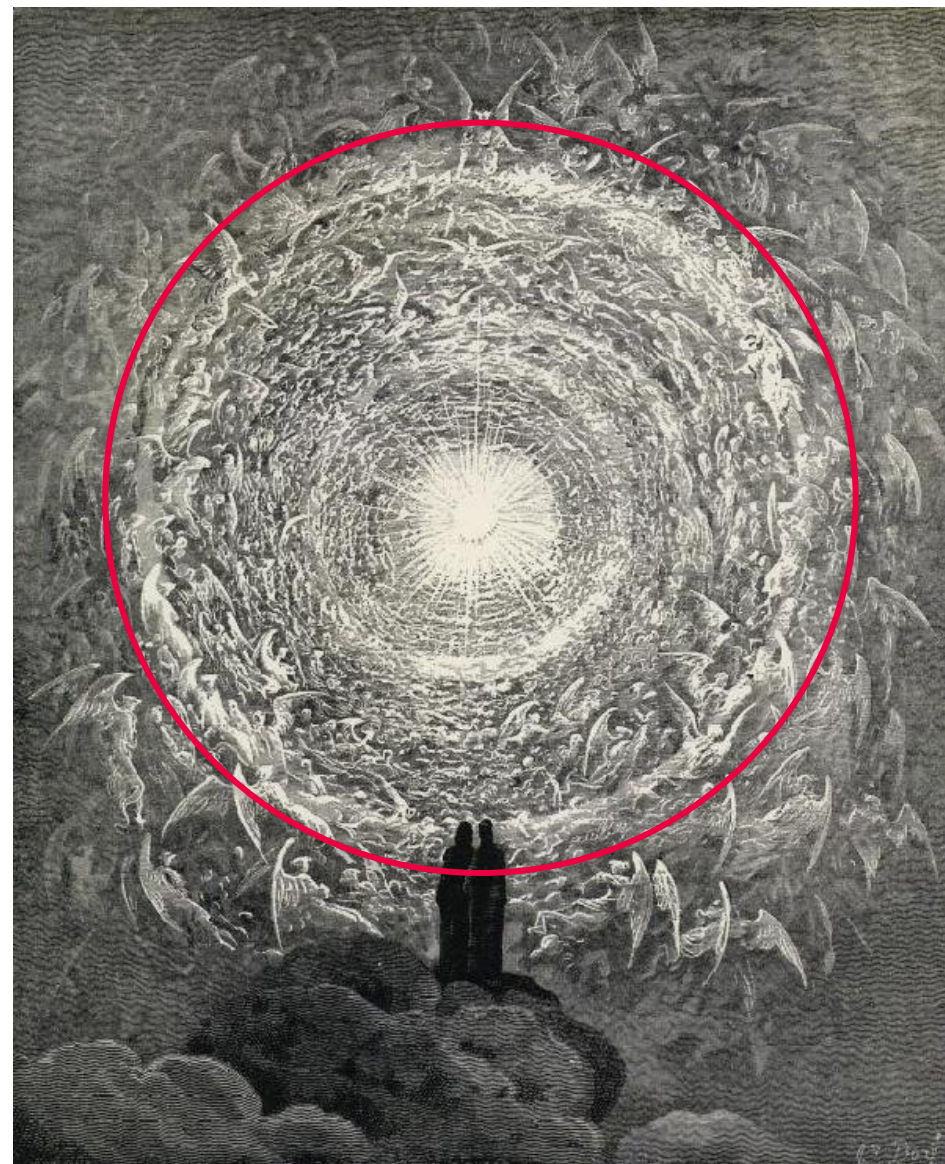
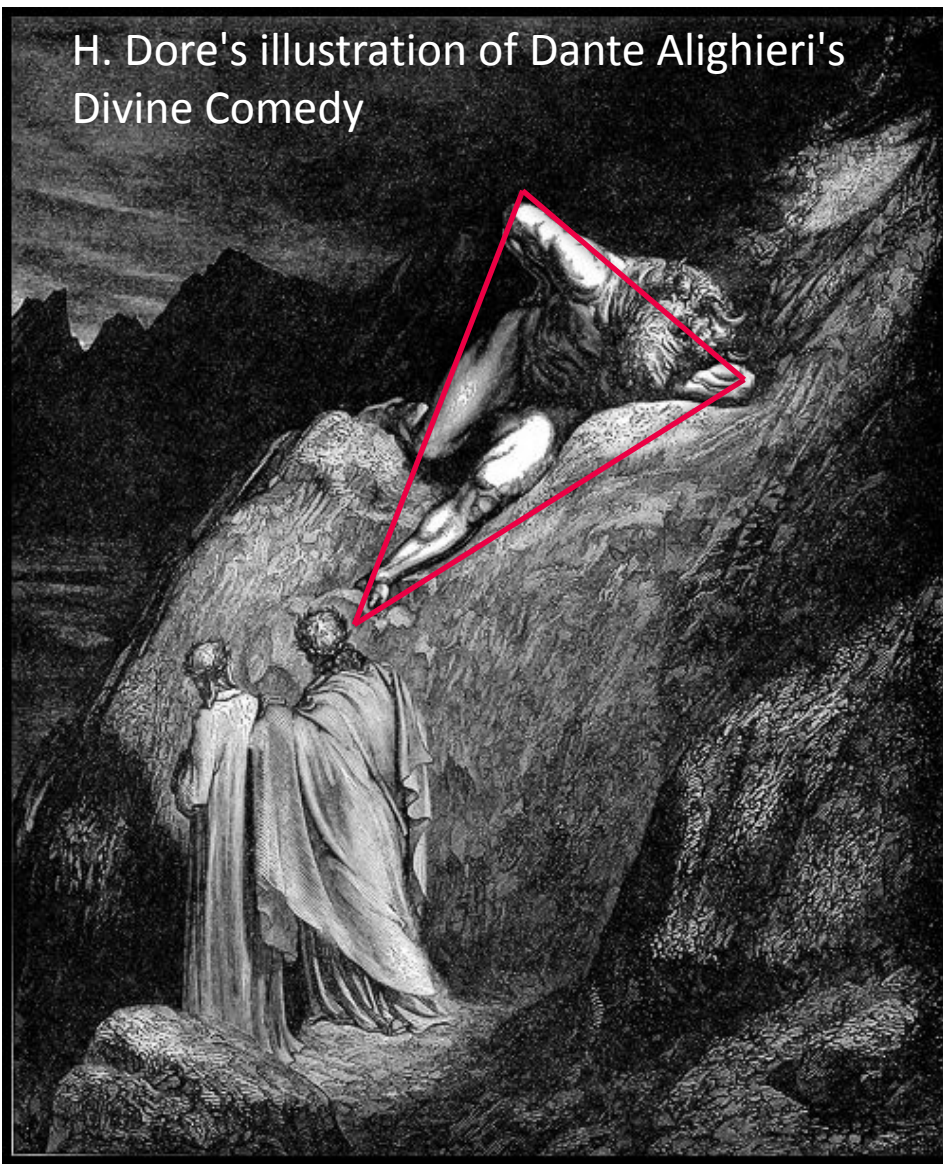








H. Dore's illustration of Dante Alighieri's Divine Comedy

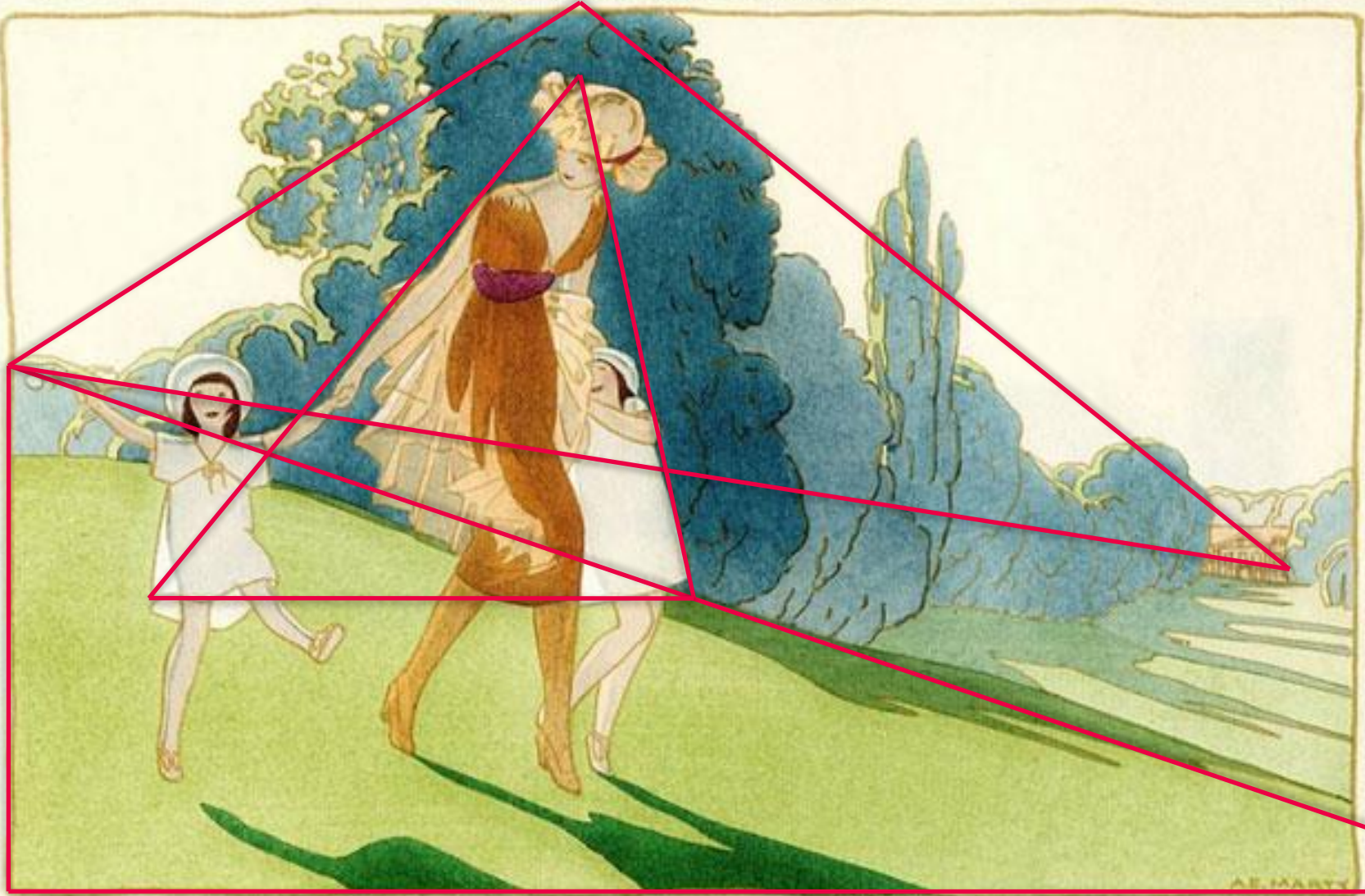




1919

MODES ET MANIÈRES D'AUJOURD'HUI

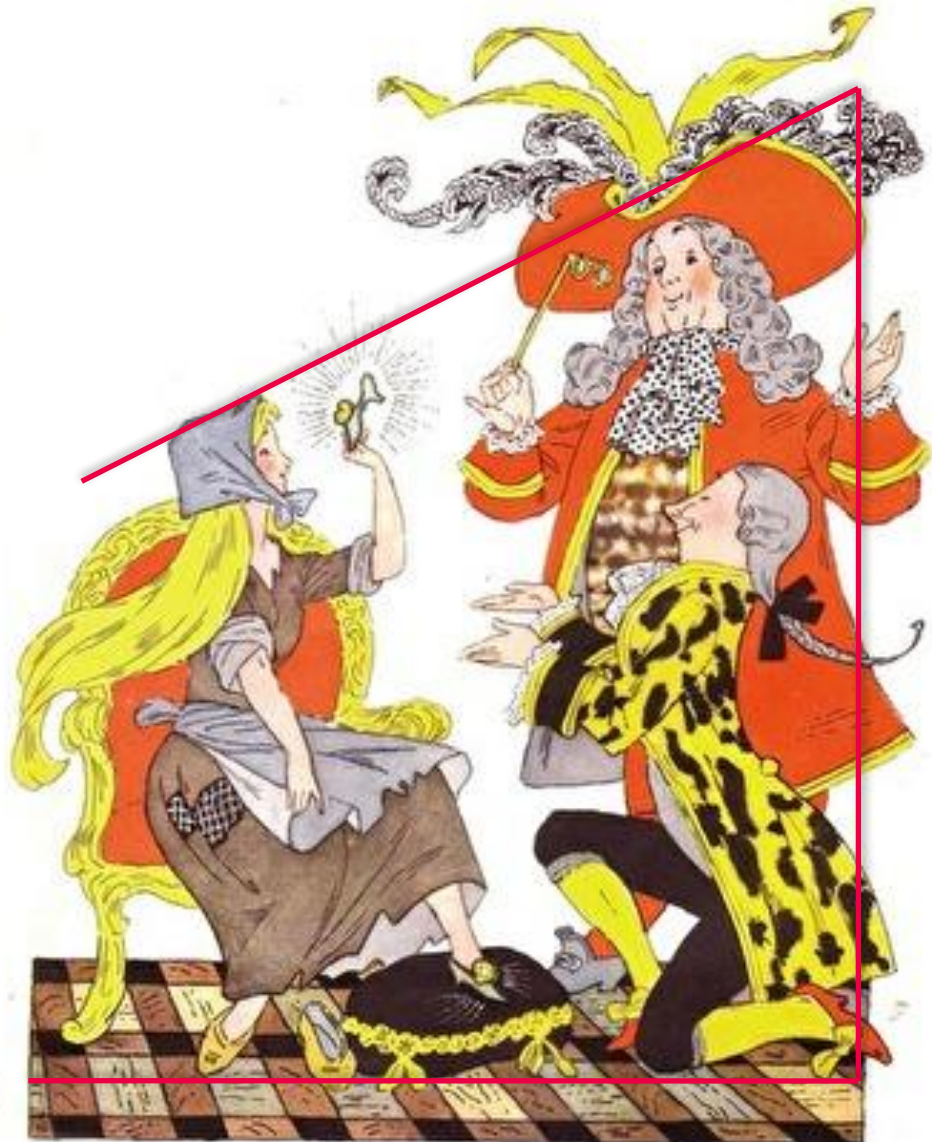
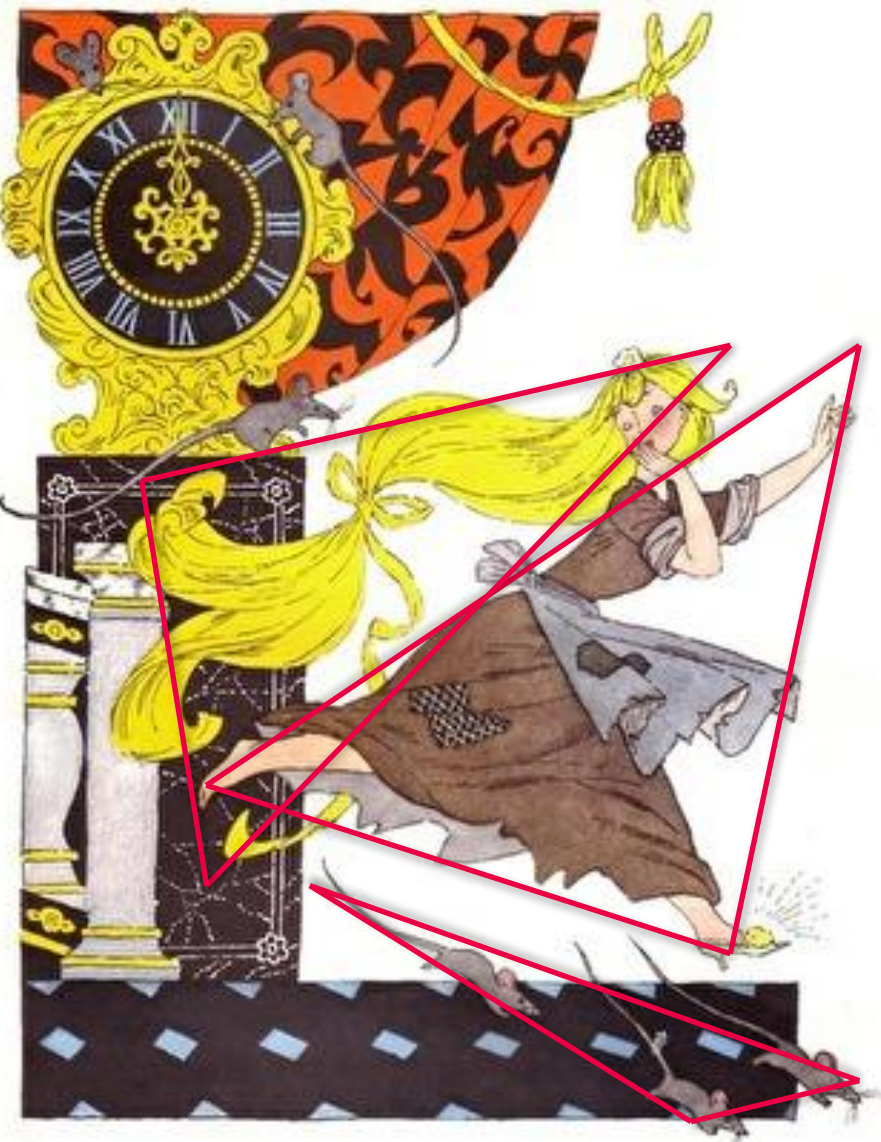
PL. II



LE MATIN DANS LE PARC

AL. MARTY





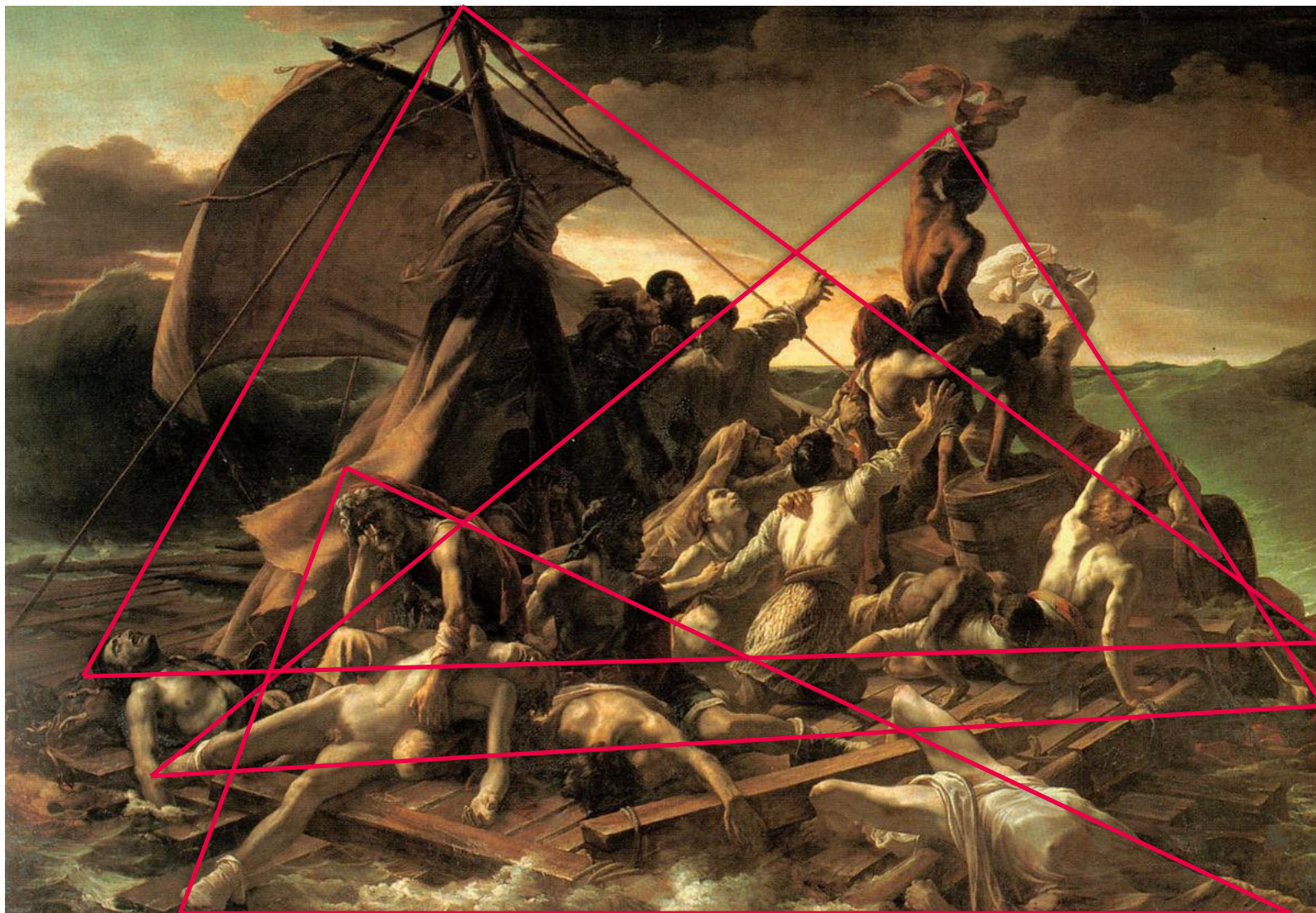
E. Bulatov, O. Vasiliev "Cinderella"





Rain, steam and speed, 1844,  
William Turner





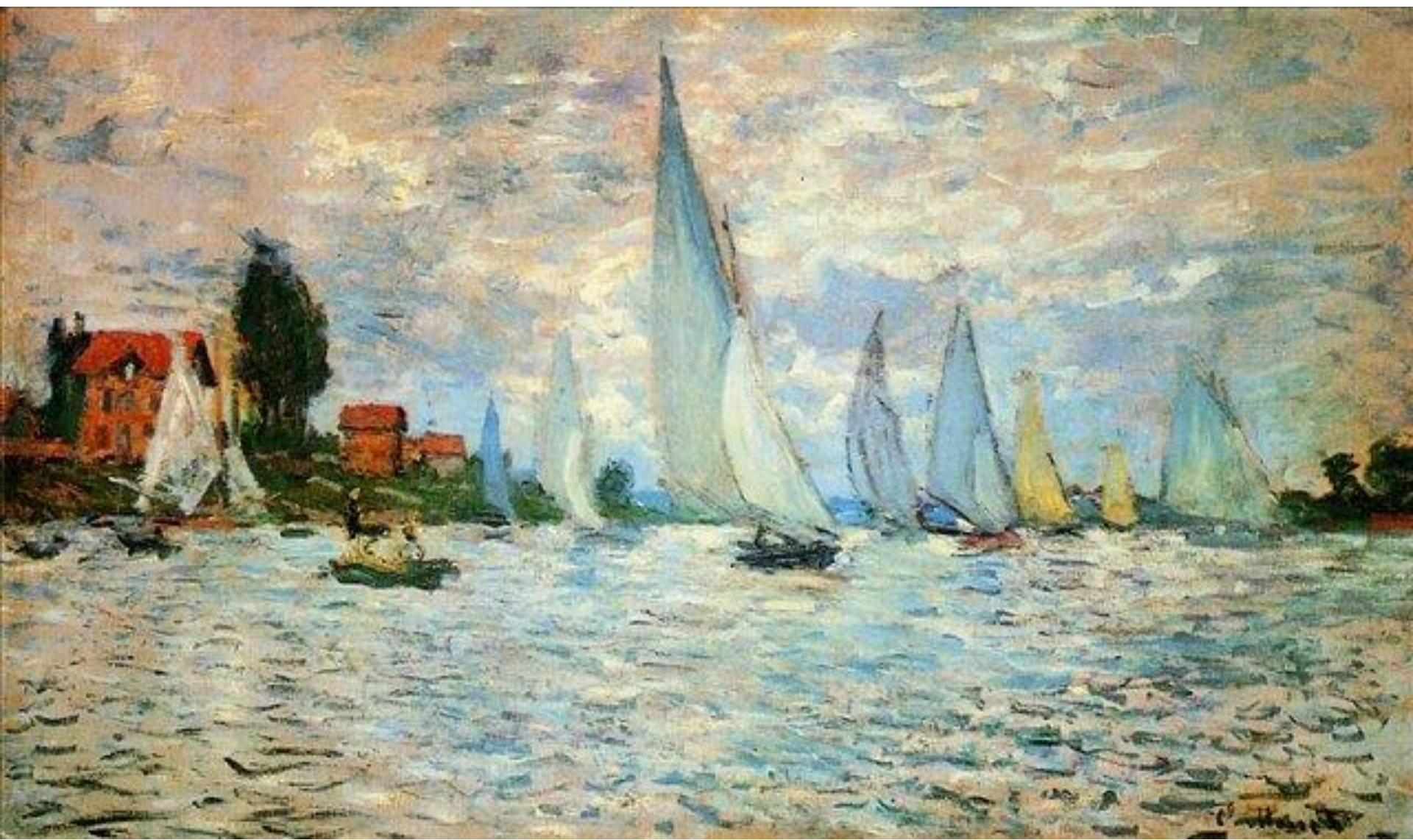
# Rhythm

---



















# Practice

---























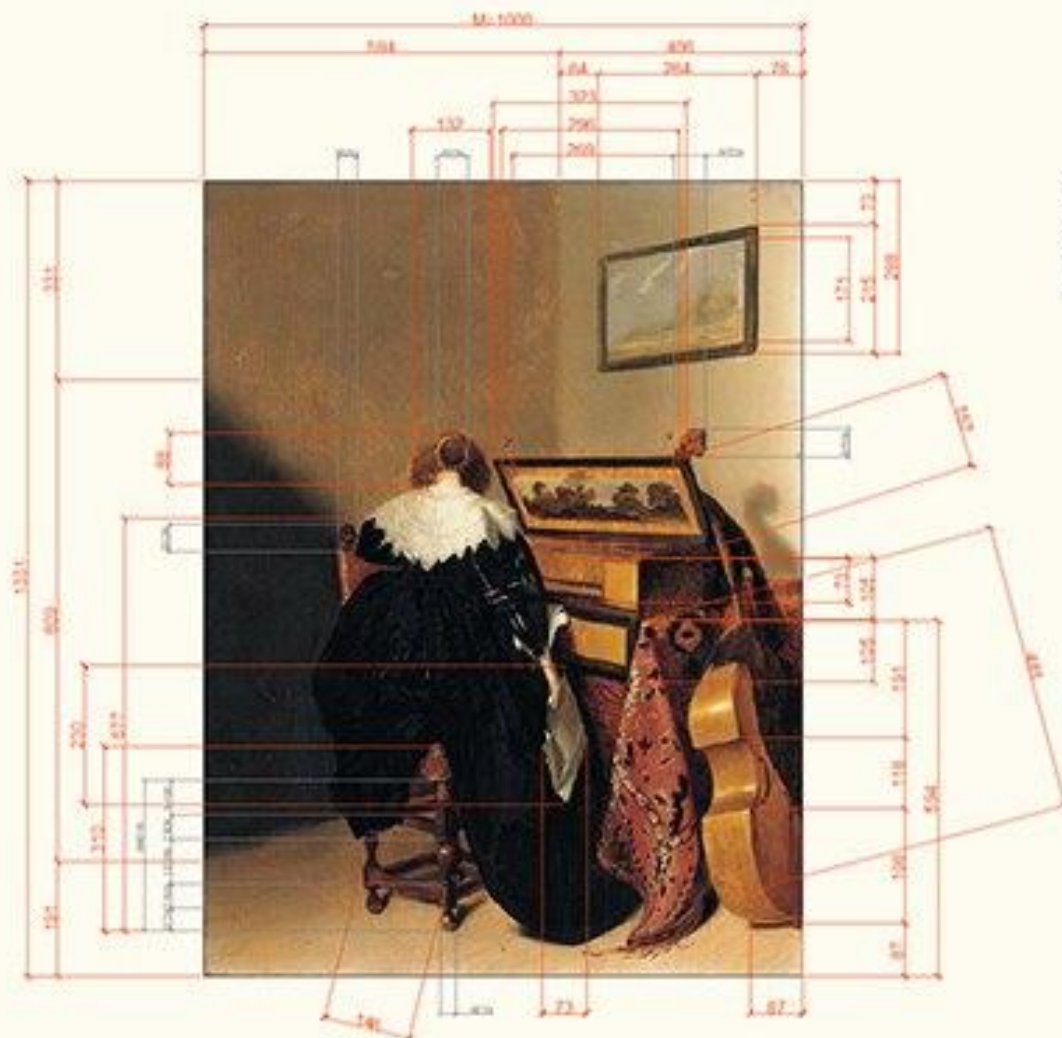








Pieter Jacobsz Codde "Lady Seated at Virginals"



Художник: Питер Кодде (1599-1678);  
 Техника: масло по дереву;  
 Тема: бытовой жанр;  
 Местонахождение: частная коллекция;  
 Размер: 43\*32 см;

ИД	Таблица значений
1011000	1011000
1011001	1011001
1011002	1011002
1011003	1011003
1011004	1011004
1011005	1011005
1011006	1011006
1011007	1011007
1011008	1011008
1011009	1011009
1011010	1011010
1011011	1011011
1011012	1011012
1011013	1011013
1011014	1011014
1011015	1011015
1011016	1011016
1011017	1011017
1011018	1011018
1011019	1011019
1011020	1011020
1011021	1011021
1011022	1011022
1011023	1011023
1011024	1011024
1011025	1011025
1011026	1011026
1011027	1011027
1011028	1011028
1011029	1011029
1011030	1011030
1011031	1011031
1011032	1011032
1011033	1011033
1011034	1011034
1011035	1011035
1011036	1011036
1011037	1011037
1011038	1011038
1011039	1011039
1011040	1011040
1011041	1011041
1011042	1011042
1011043	1011043
1011044	1011044
1011045	1011045
1011046	1011046
1011047	1011047
1011048	1011048
1011049	1011049
1011050	1011050
1011051	1011051
1011052	1011052
1011053	1011053
1011054	1011054
1011055	1011055
1011056	1011056
1011057	1011057
1011058	1011058
1011059	1011059
1011060	1011060
1011061	1011061
1011062	1011062
1011063	1011063
1011064	1011064
1011065	1011065
1011066	1011066
1011067	1011067
1011068	1011068
1011069	1011069
1011070	1011070
1011071	1011071
1011072	1011072
1011073	1011073
1011074	1011074
1011075	1011075
1011076	1011076
1011077	1011077
1011078	1011078
1011079	1011079
1011080	1011080
1011081	1011081
1011082	1011082
1011083	1011083
1011084	1011084
1011085	1011085
1011086	1011086
1011087	1011087
1011088	1011088
1011089	1011089
1011090	1011090
1011091	1011091
1011092	1011092
1011093	1011093
1011094	1011094
1011095	1011095
1011096	1011096
1011097	1011097
1011098	1011098
1011099	1011099
1011100	1011100





**Thank you for attention**

[yuliya.bezbakh@gmail.com](mailto:yuliya.bezbakh@gmail.com)