

Sony NEX-FS100 U Super 35mm Sensor Camcorder



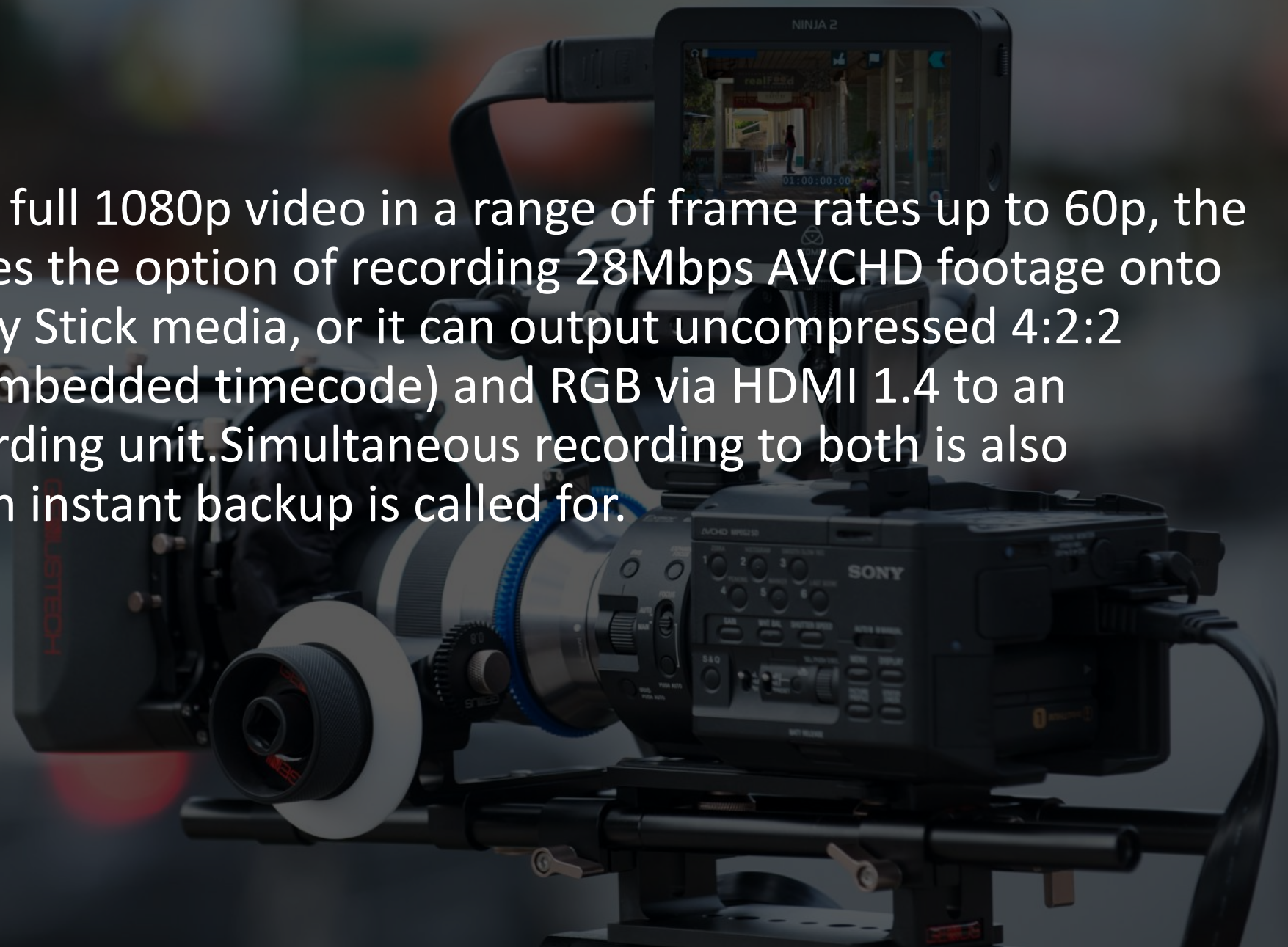
- The NEX-FS100U Super 35mm Sensor Camcorder is Sony's first affordable and fully professional large-sensor video camera. Hot on the heels of the PMW-F3, this compact, highly modular camera uses the same S35-size CMOS sensor as the F3.



- Unlike smaller, broadcast-style sensors or the larger "full-frame" sensors of some DSLRs, the NEX-FS100's imaging area matches that of standard Hollywood film cameras, providing complete compatibility with cine-style film lenses (via optional adapters) as well as any of Sony's E-Mount lenses.

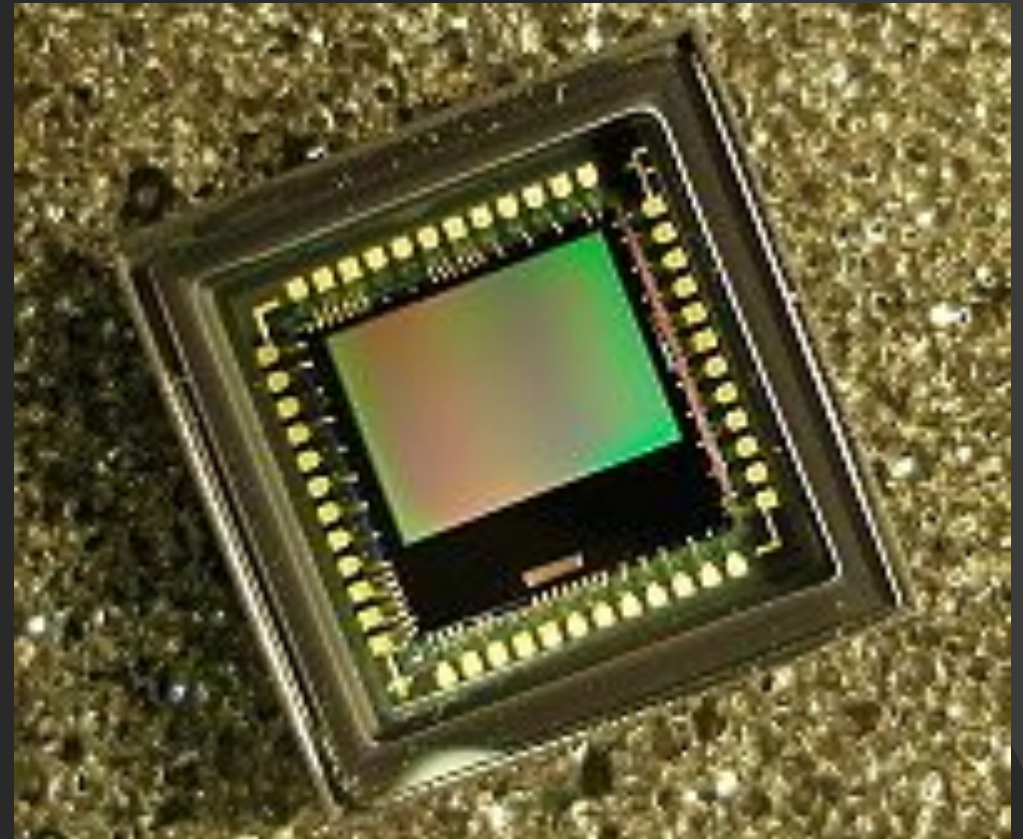


- Able to shoot full 1080p video in a range of frame rates up to 60p, the FS100 provides the option of recording 28Mbps AVCHD footage onto SD or Memory Stick media, or it can output uncompressed 4:2:2 video (with embedded timecode) and RGB via HDMI 1.4 to an external recording unit. Simultaneous recording to both is also possible when instant backup is called for.



Exmor Super 35 CMOS Sensor for Shooting Motion Pictures

- Equipped with a large CMOS sensor equivalent in size to Super 35mm film, the NEX-FS100 enables shooting with the same creative depth of field as the PMW-F3.
- The sensor also features the optimum number of effective pixels for shooting HD moving images. At a high 60fps in all-pixel scan mode, this allows images to be captured with less color aliasing, jaggedness and rolling shutter than DSLR cameras, while providing the sensitivity to shoot at a minimum illumination of 0.28 lux. Another advantage of Exmor technology is minimal noise when shooting lowlight scenes.



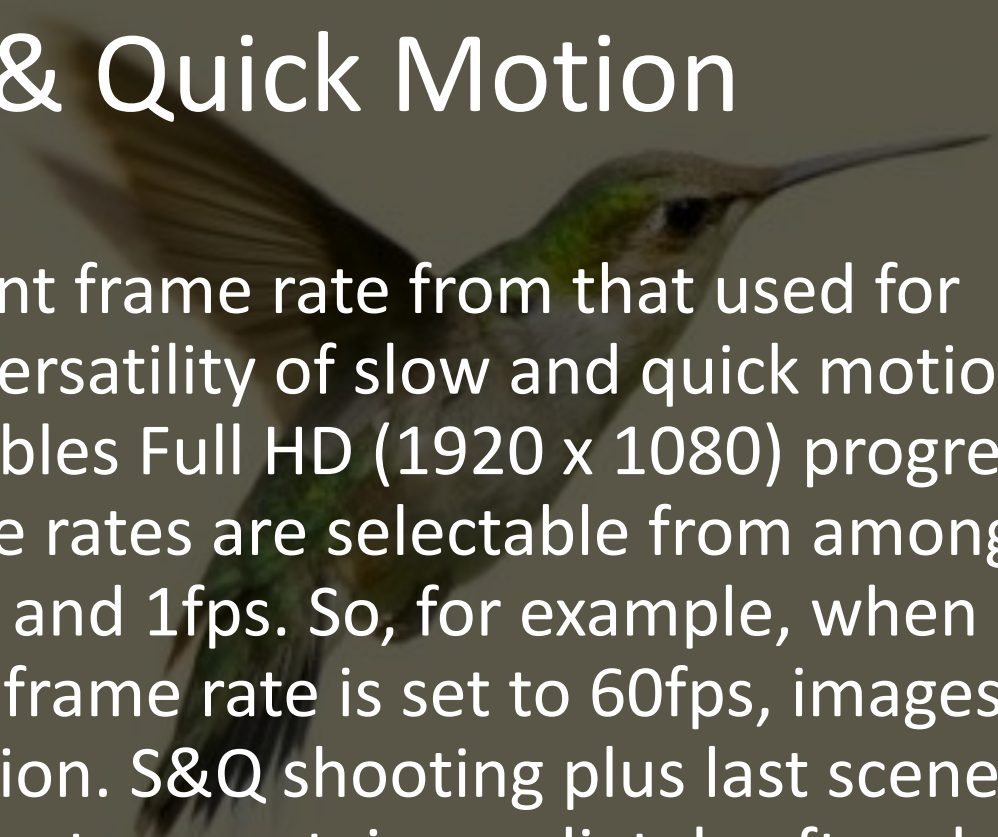
Modular Design for a Variety of Shooting Styles

- Featuring a compact, lightweight body with detachable grip, handle, and viewfinder, the NEX-FS100 is ideal for a wide range of shooting situations.
- During handheld shooting, the angle of the grip can be changed as desired, and recording started and stopped with a button on the grip. Recording start/stop buttons are also provided on the top and lower right of the camera.
- There are also 1/4" and 3/8" screw holes on both the handle and the bottom of the camera body for mounting various peripheral devices--plus a tape measure hook and an image sensor position index on the body.



1920 x 1080P Slow & Quick Motion

- Recording images at a different frame rate from that used for playback provides the extra versatility of slow and quick motion shooting. The NEX-FS100 enables Full HD (1920 x 1080) progressive slow and quick motion. Frame rates are selectable from among 60fps, 30fps, 15fps, 8fps, 4fps, 2fps, and 1fps. So, for example, when recording at 1080/30p, if the frame rate is set to 60fps, images are recorded in 2 times slow motion. S&Q shooting plus last scene review permits checking the S&Q effects on-set, immediately after shooting the scene without drilling down menus.



A cartoon illustration of a man with spiky brown hair, wide eyes, and a red suit. He is holding a large stack of green 100-dollar bills in his right hand. The background is a dark grey wall with some circular lights.

Purchase price

- The price of this unit in Russia is \$ 3,445. If you buy an already used camera, then the price can reach \$ 1,000.

Conclusion

- For its price, the camera has quite good characteristics. Although such characteristics can be on DSLR cameras, it is still a camcorder and has some advantages.