

КТО ЛИШНИЙ?

## **Цели:**

- активизация и обогащение словаря по теме «Домашние птицы»;
- закрепить знания детей о внешних признаках, повадках птиц;
- совершенствование умений образовывать притяжательные прилагательные, существительные множественного числа, уменьшительно-ласкательную форму существительных;
- развитие связной речи, умений ребенка отвечать на поставленный вопрос;
- развитие мышления, зрительного внимания.

## **Ход игры:**

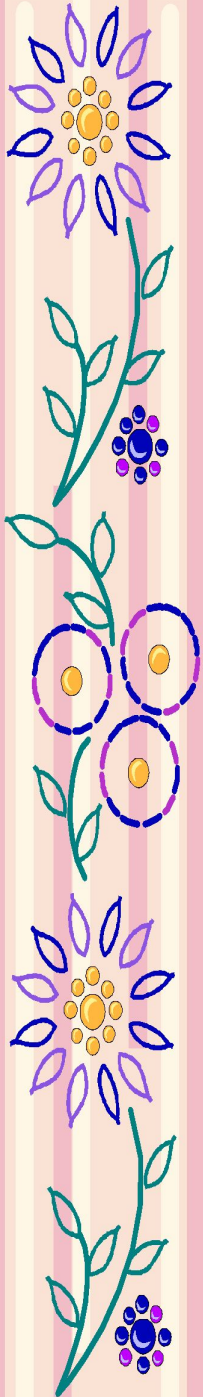
Просим ребёнка называть появляющиеся картинки.

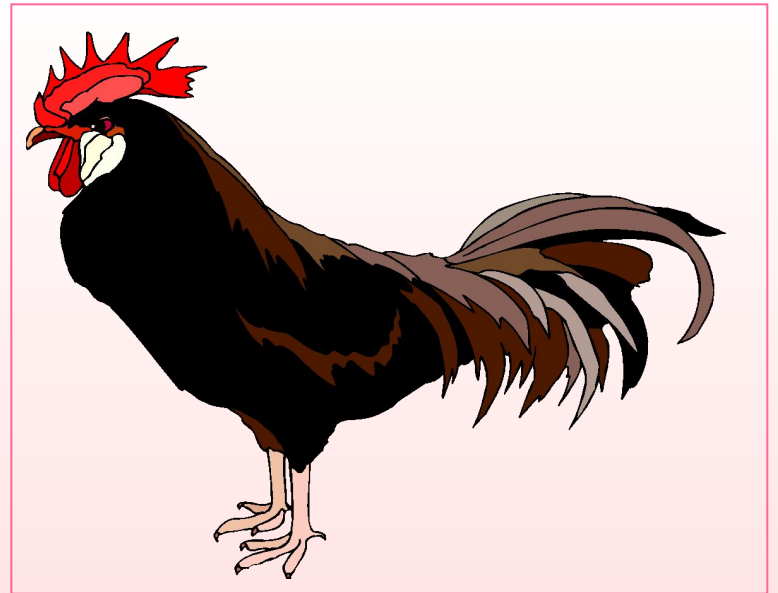
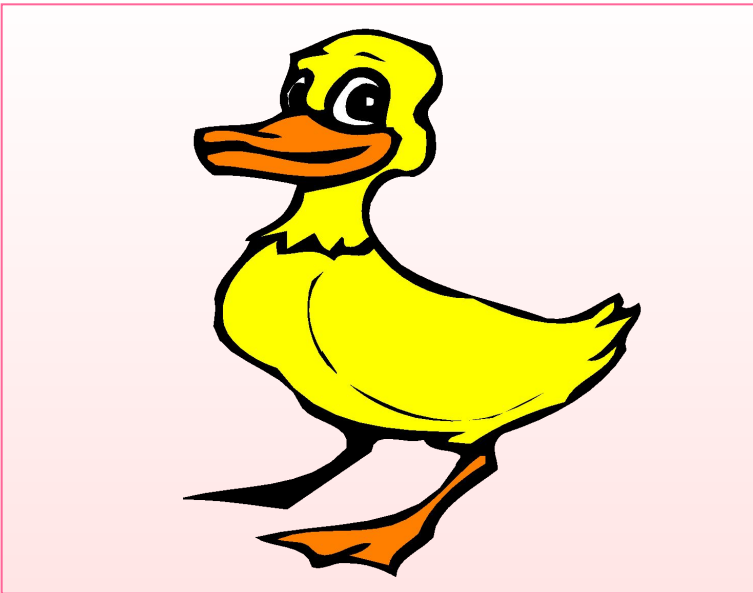
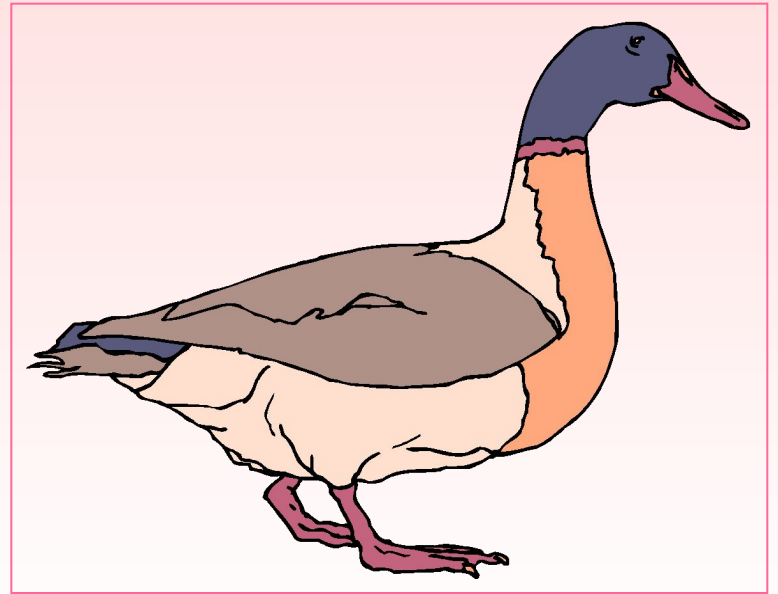
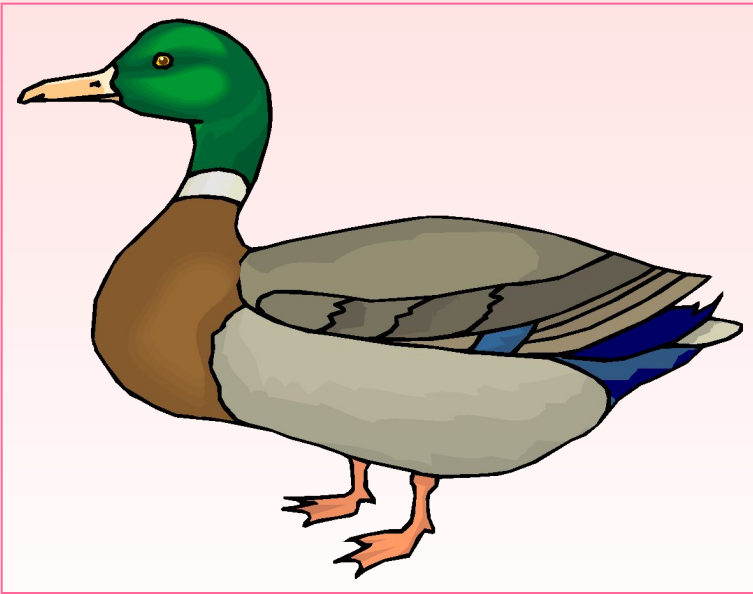
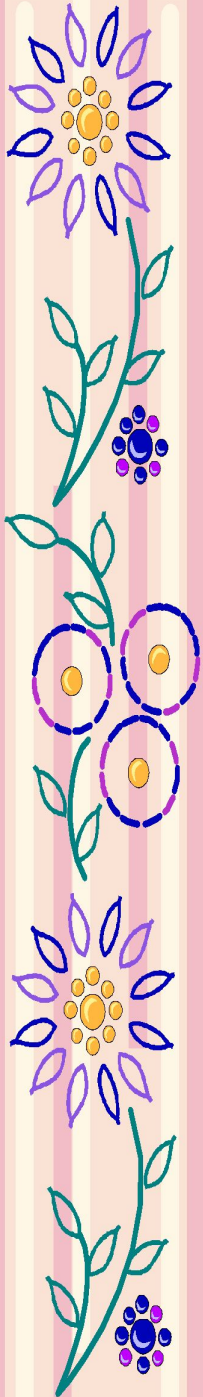
- Какая картинка лишняя, какая не подходит к остальным?

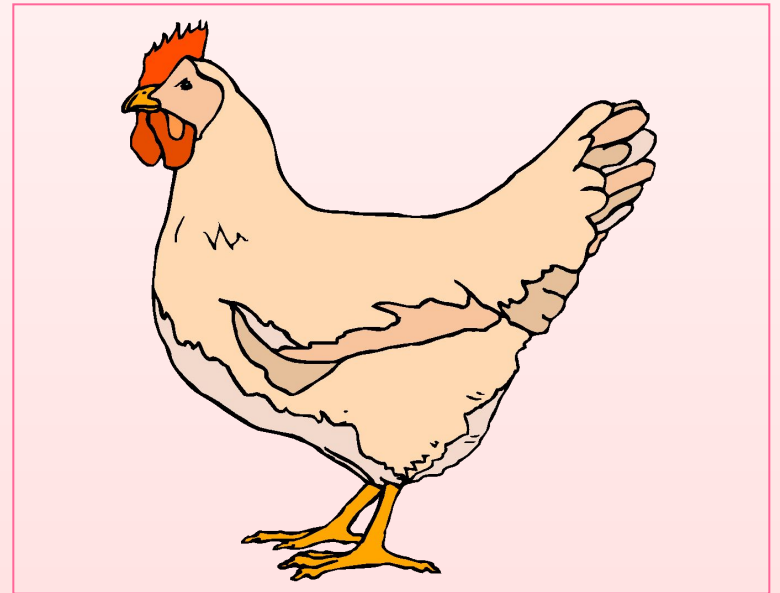
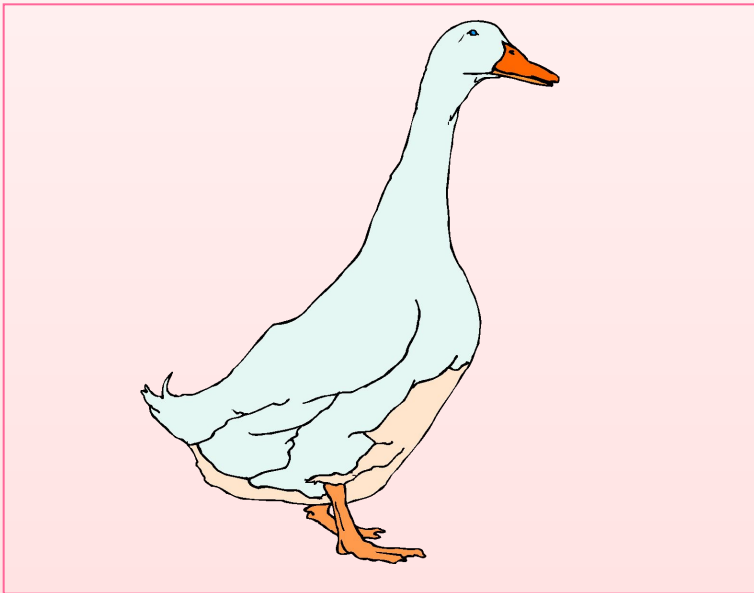
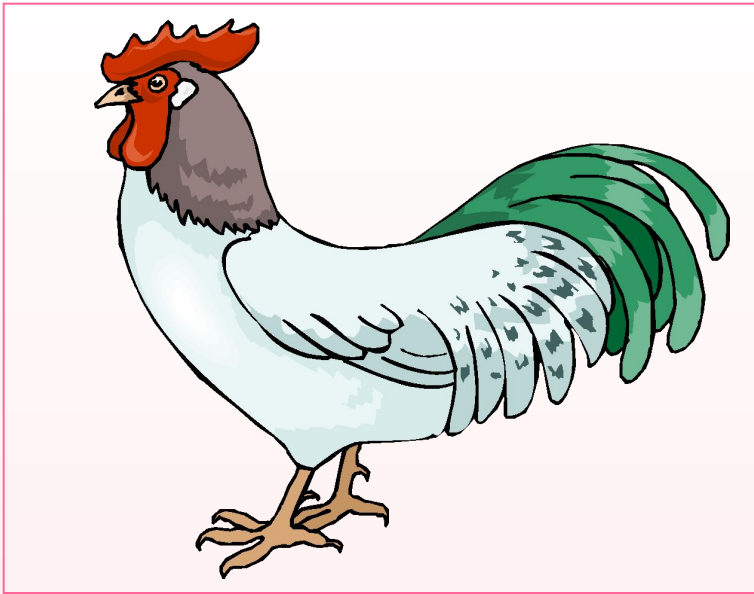
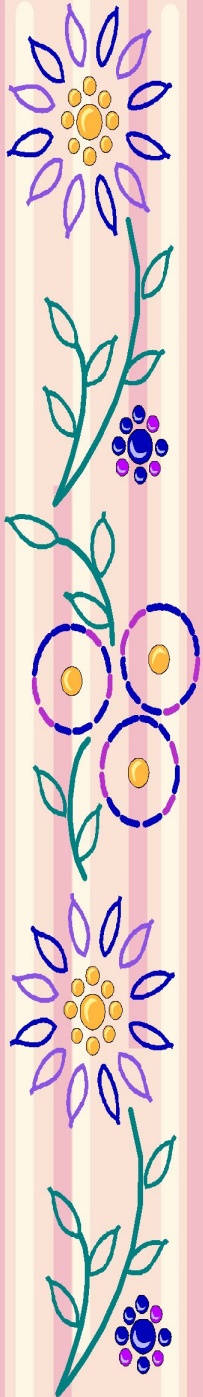
После ответа ребёнка кликаем мышкой и лишняя картинка меняет цвет фона.

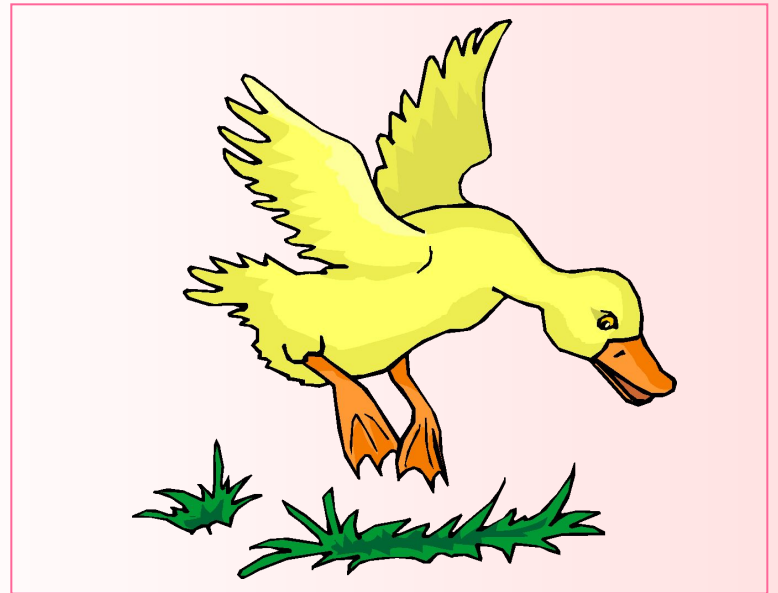
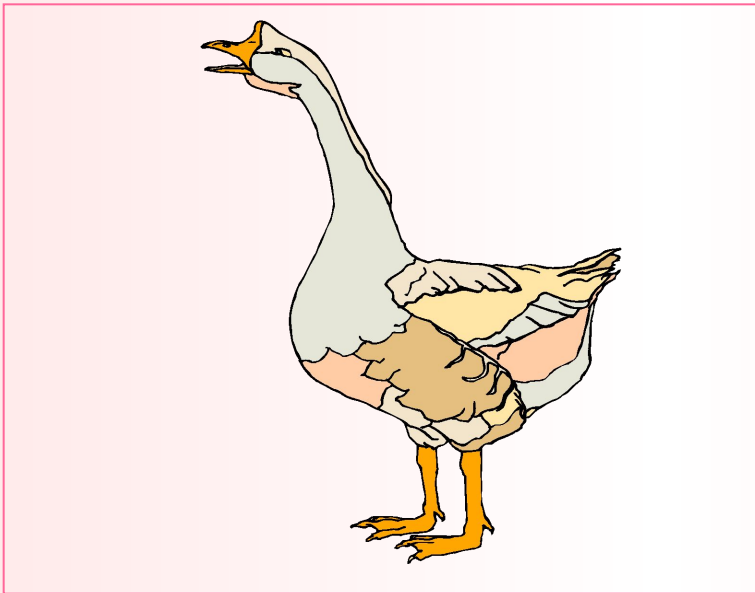
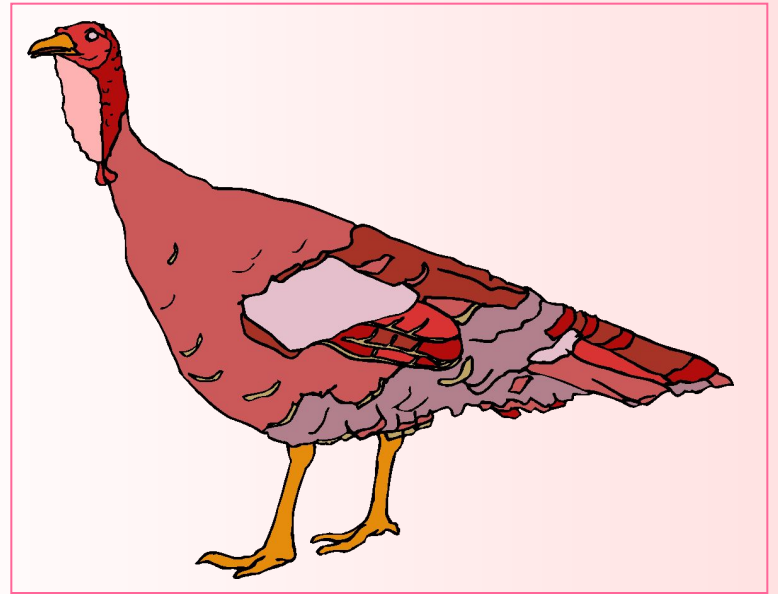
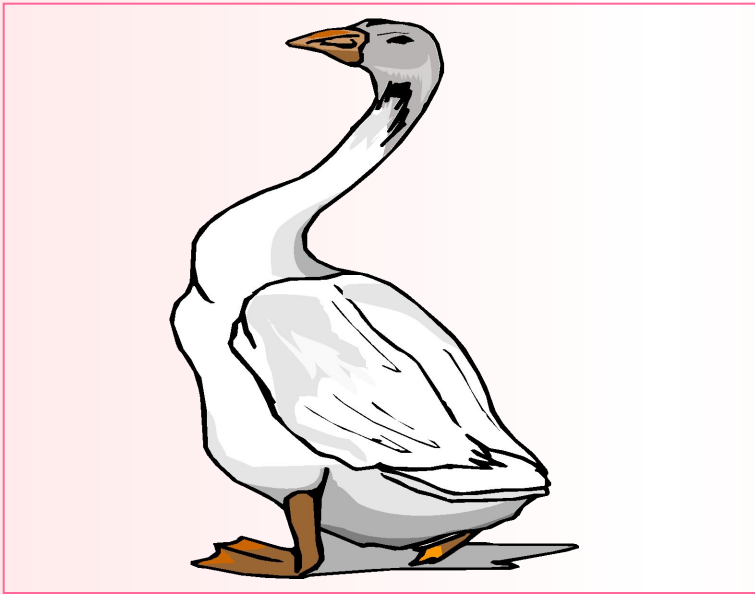
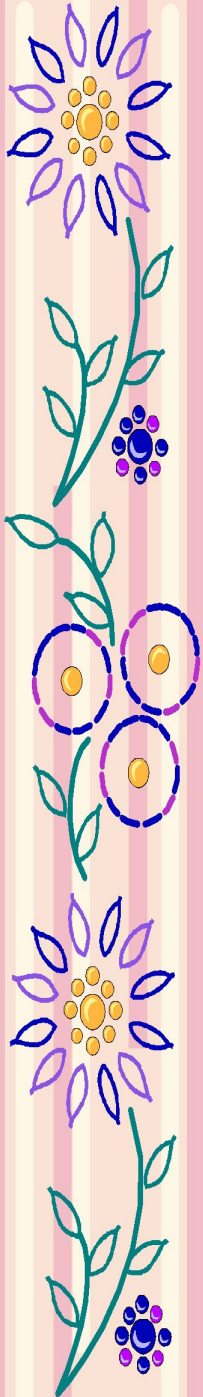
- Объясни, почему она лишняя?

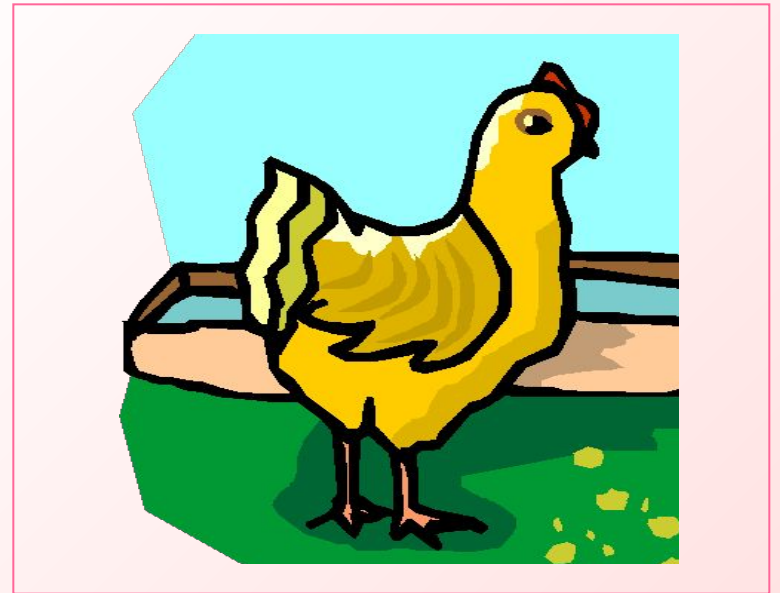
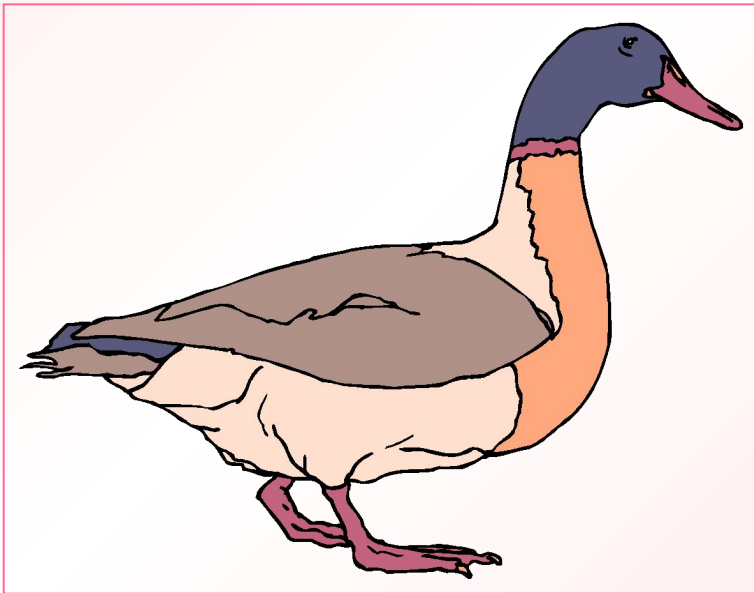
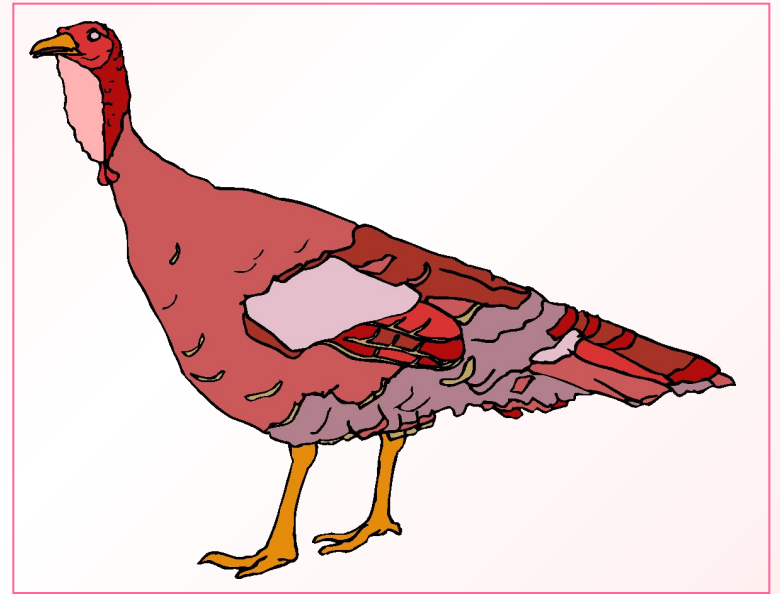
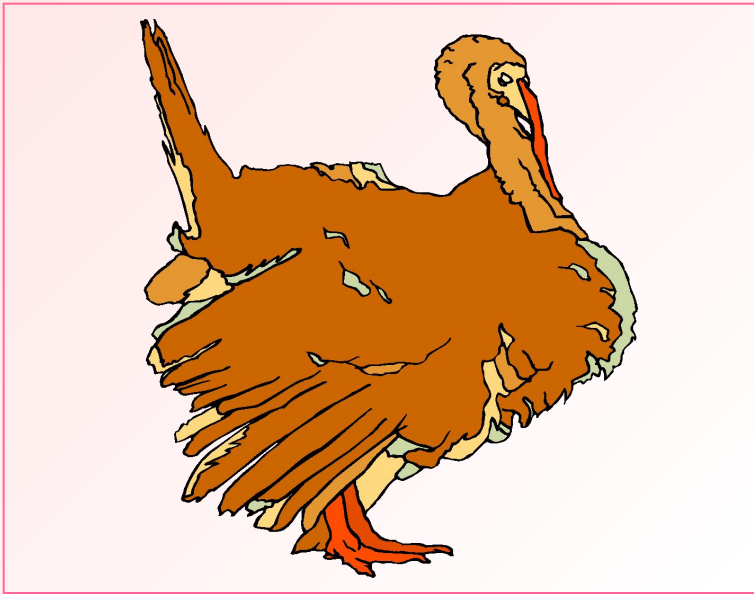
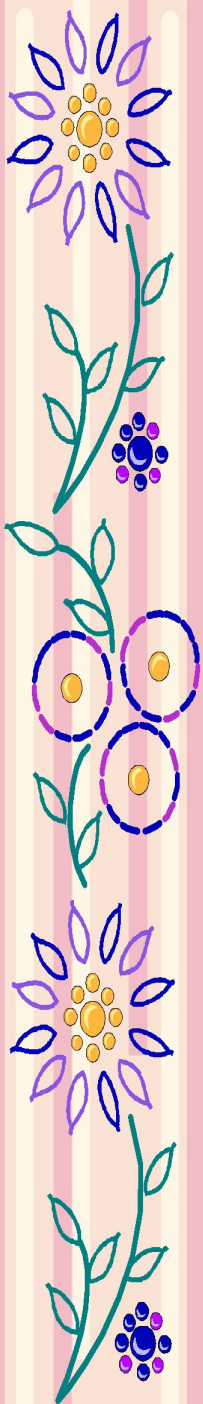
Ребёнок может назвать и другую картинку. Важно, чтобы он смог объяснить вам, почему именно эта картинка лишняя.

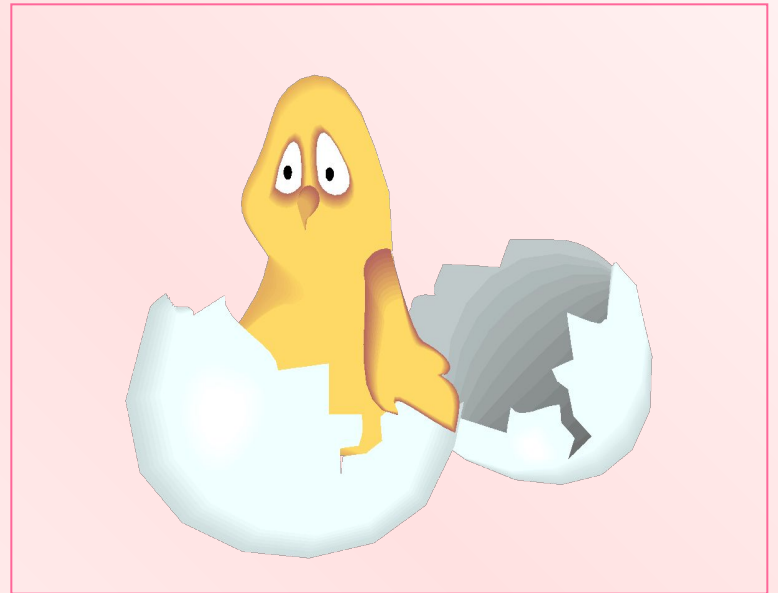
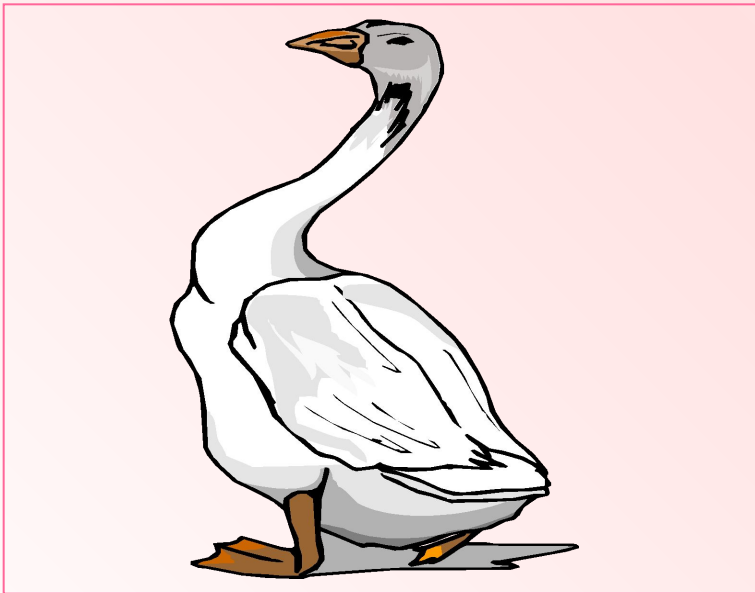
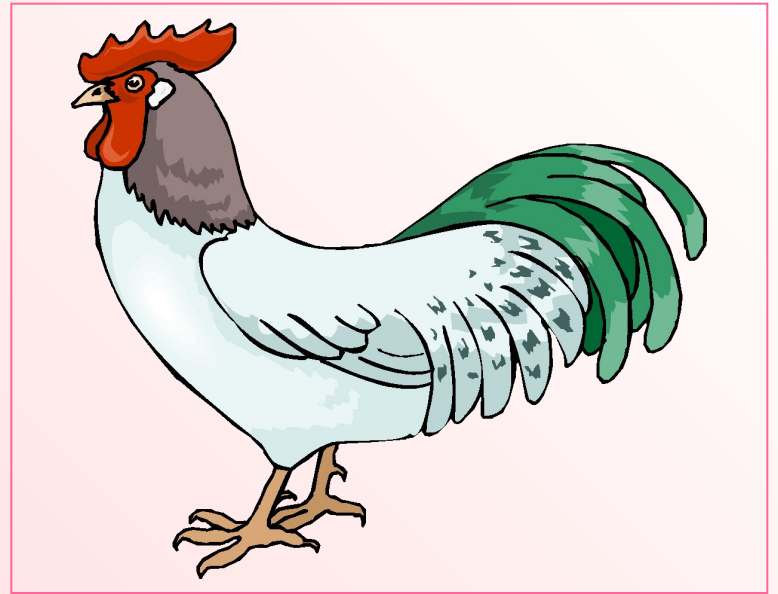
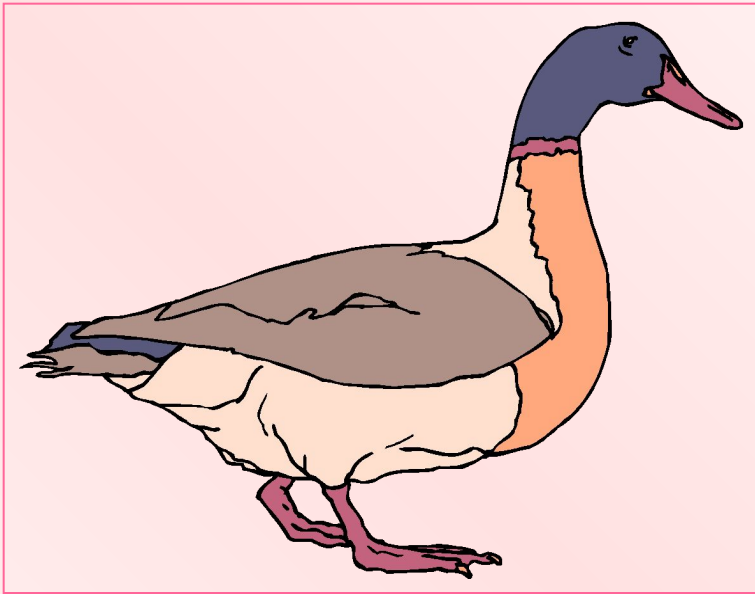
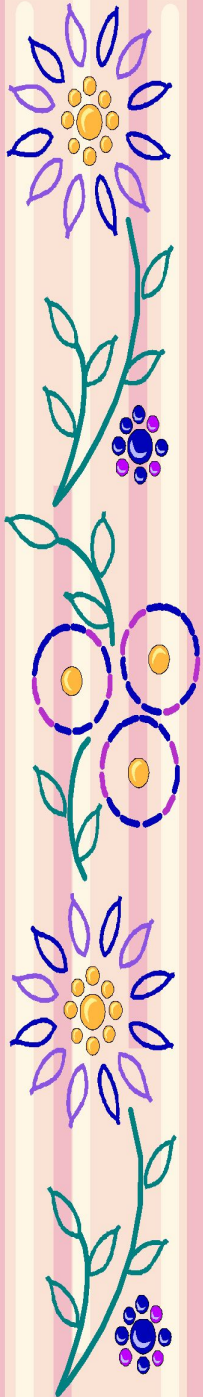


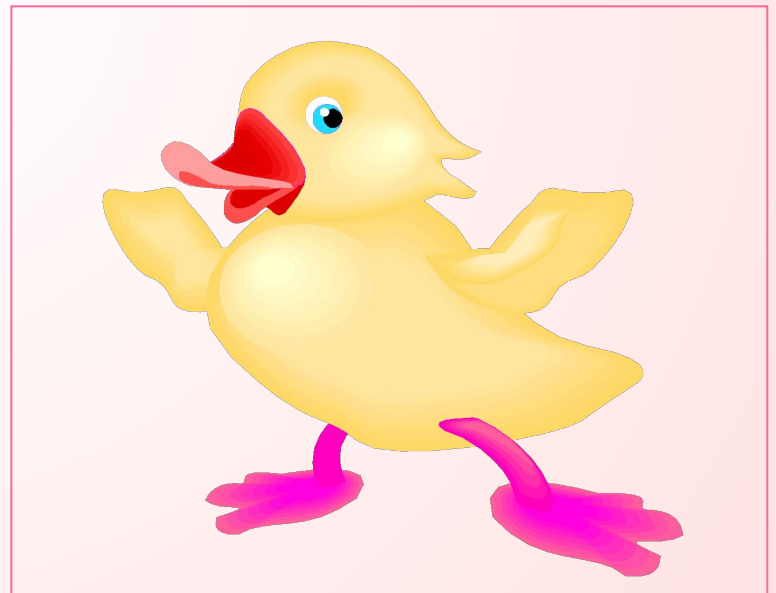
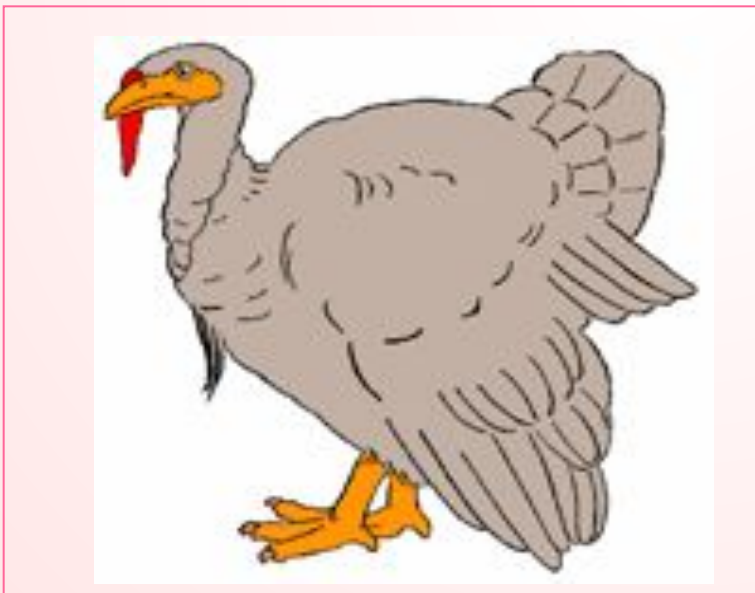
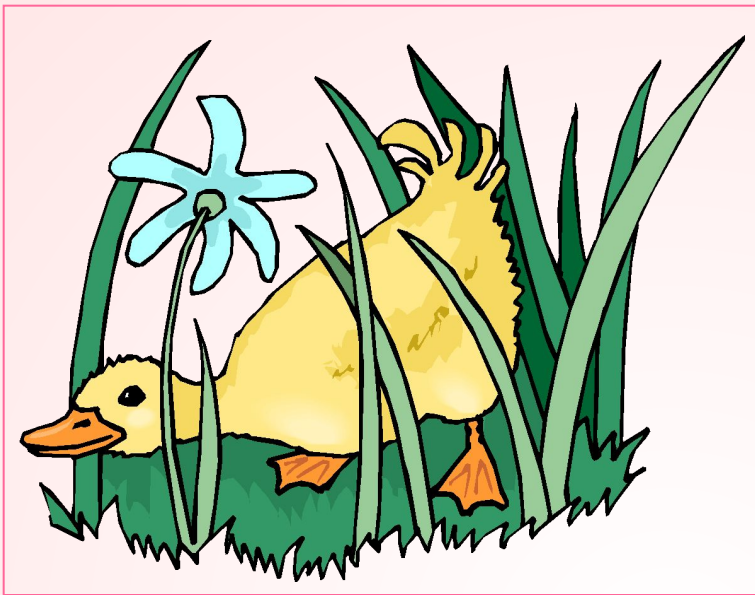
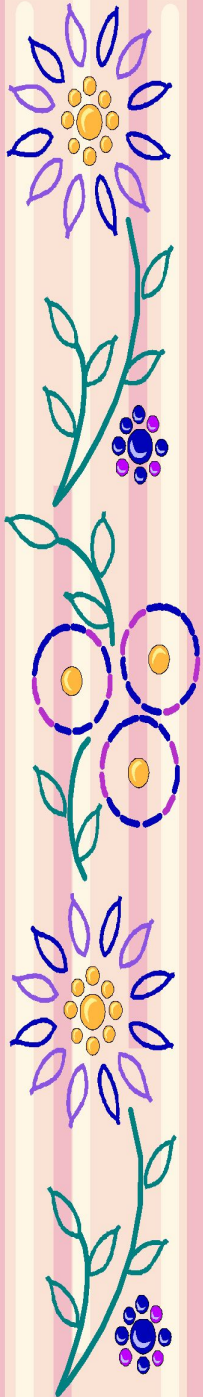




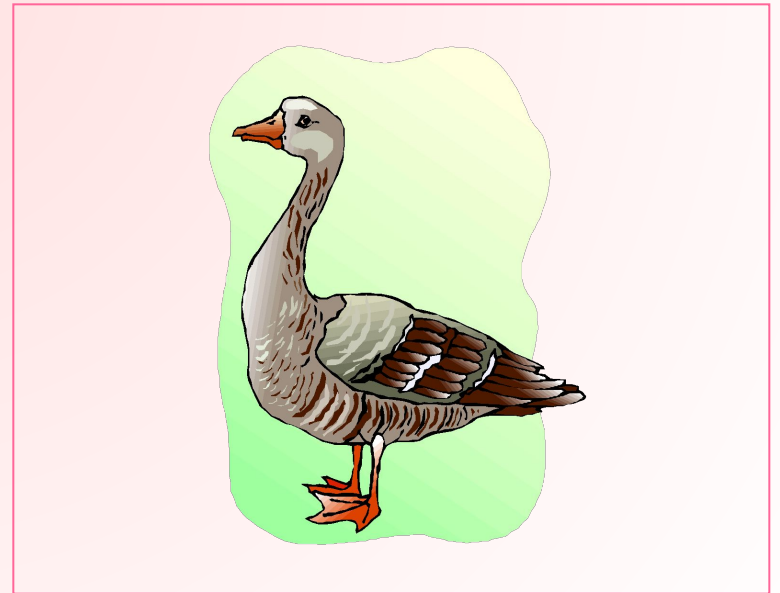
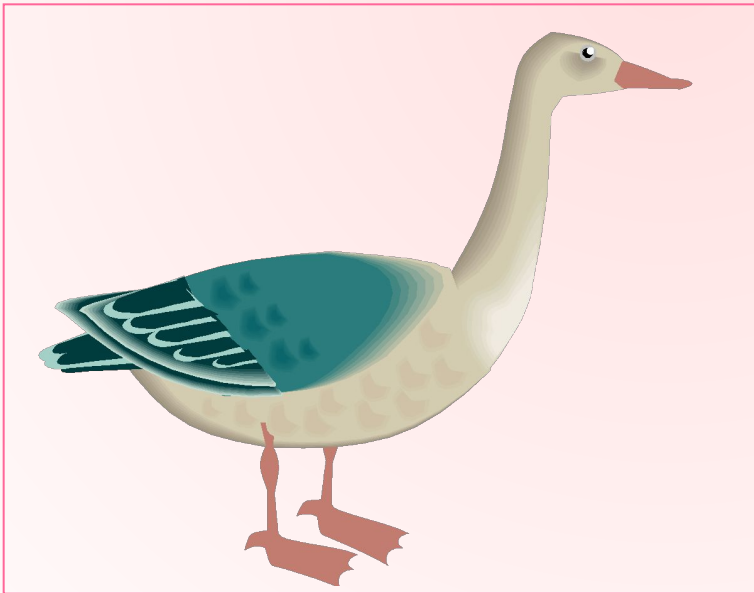
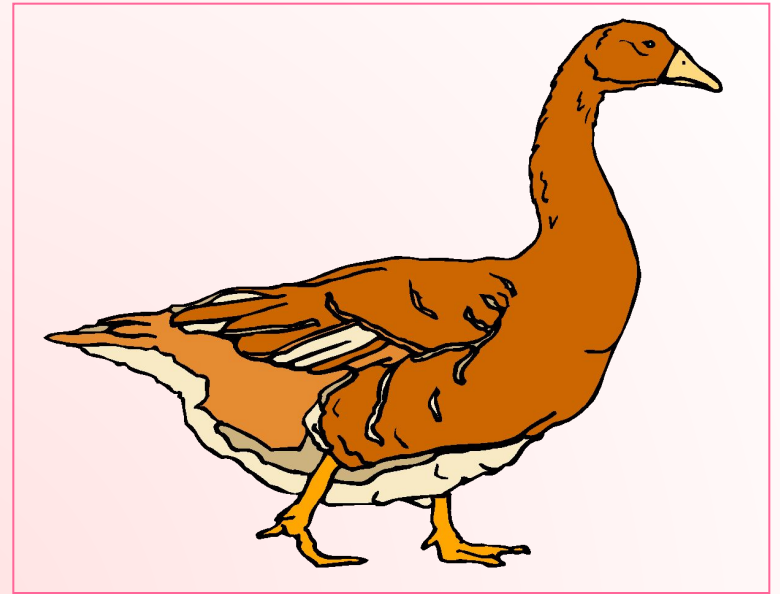
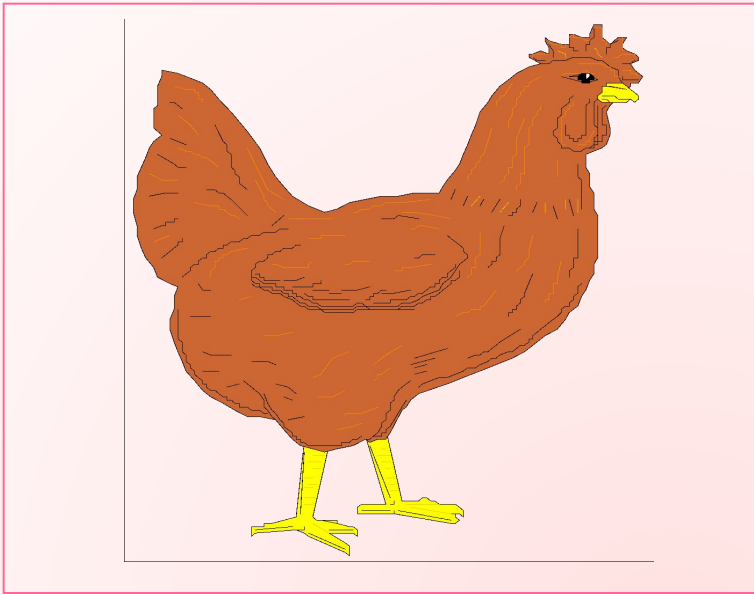
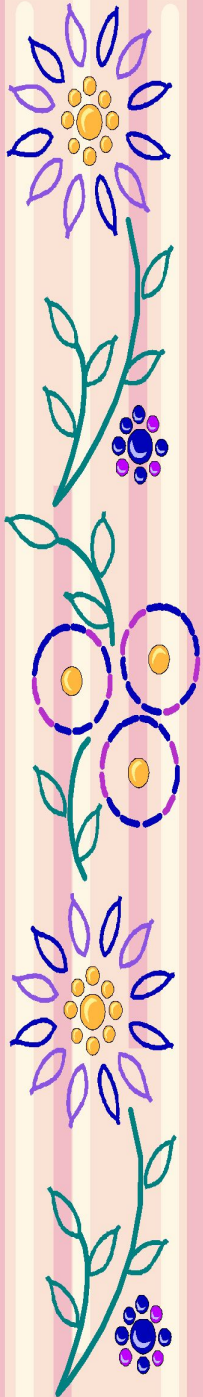


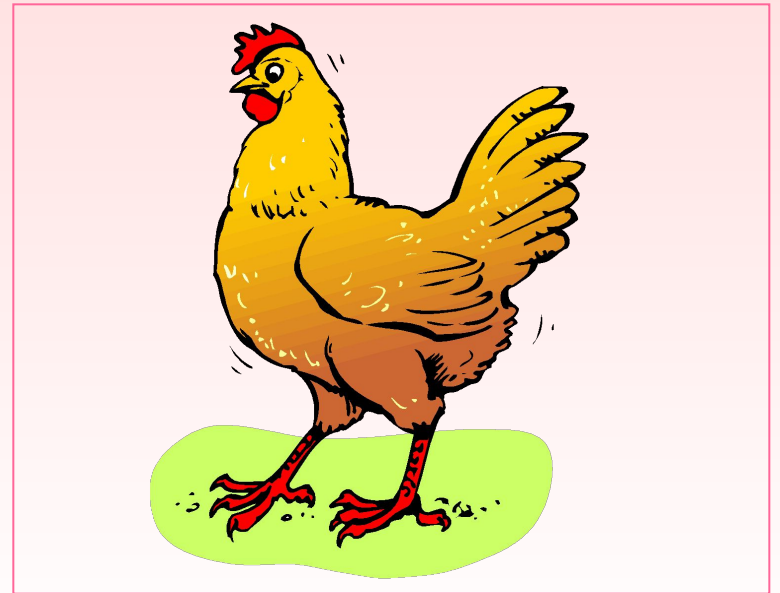
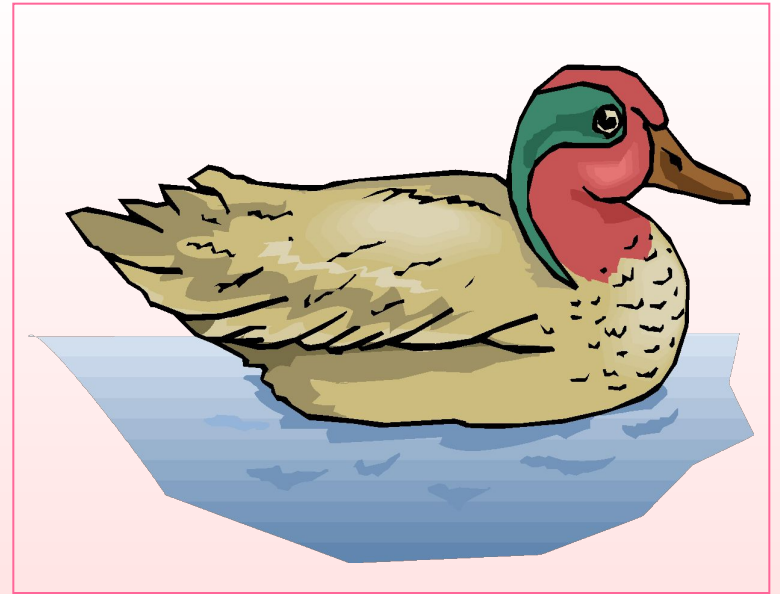
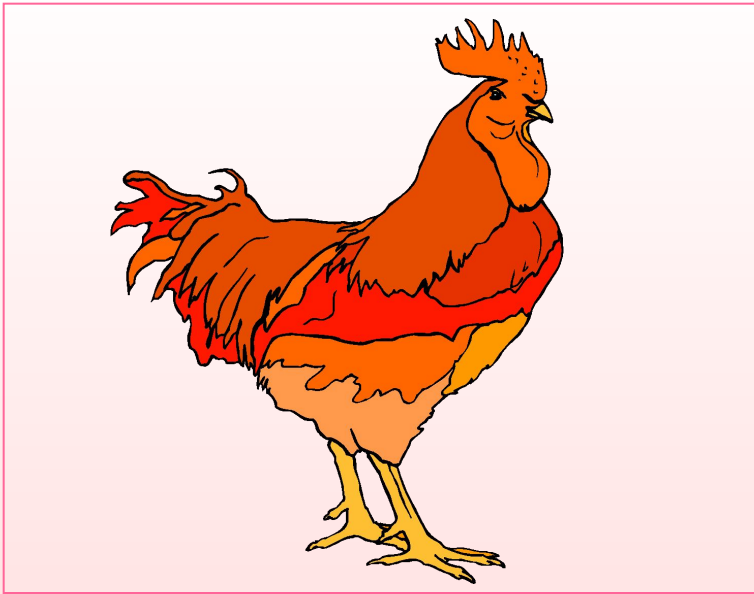
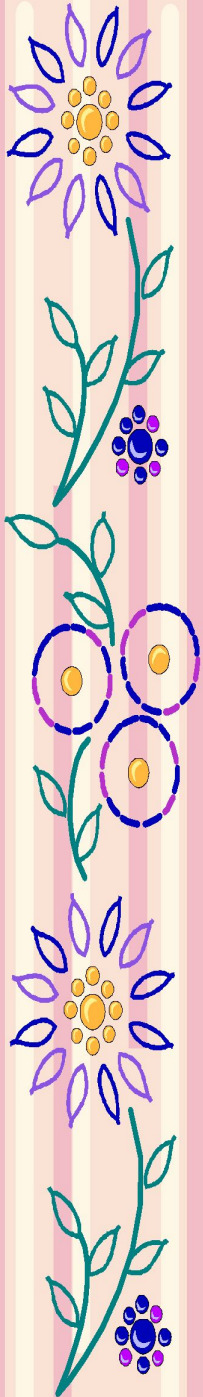


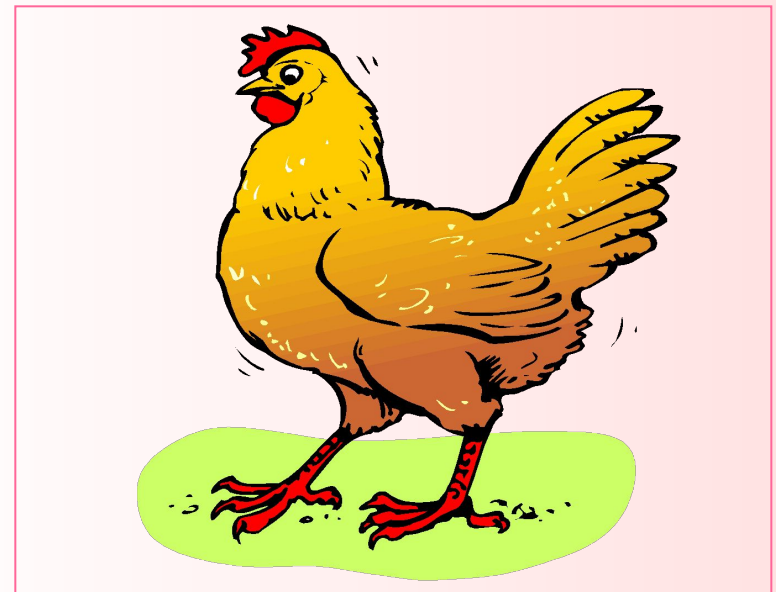
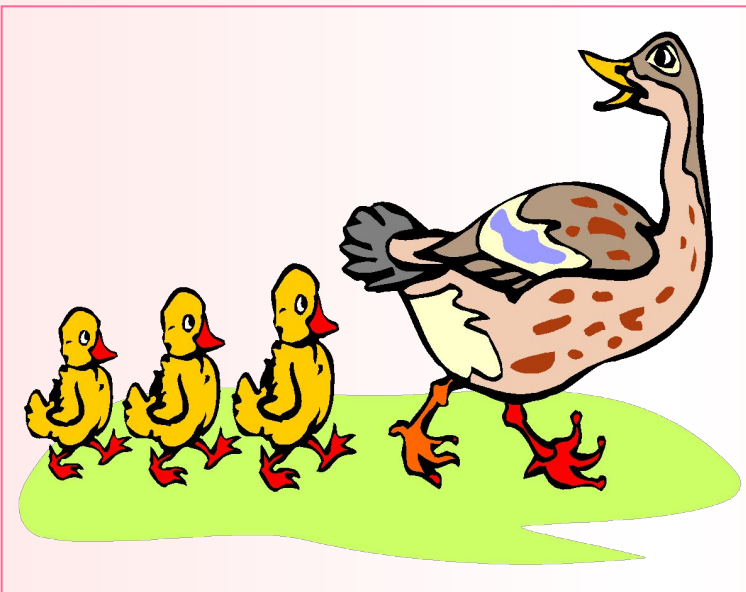
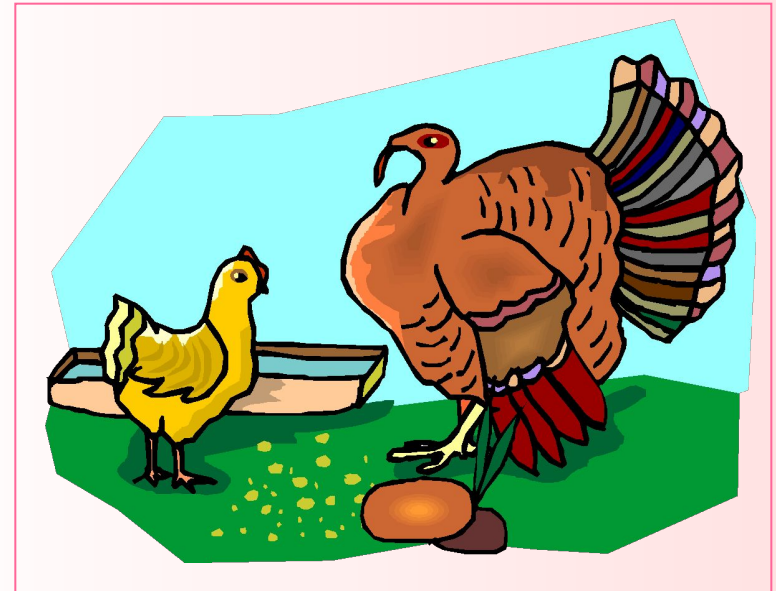
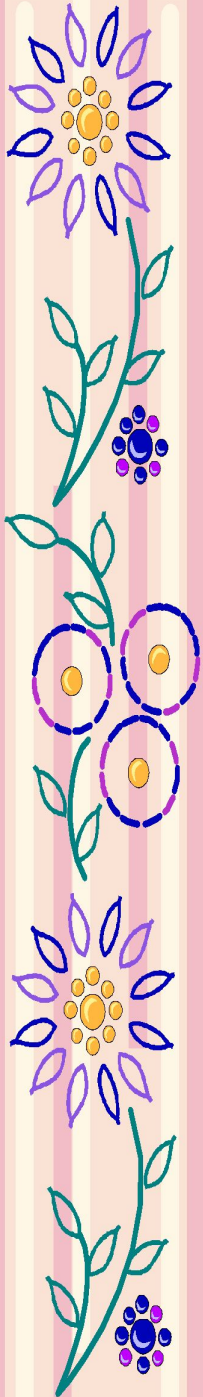


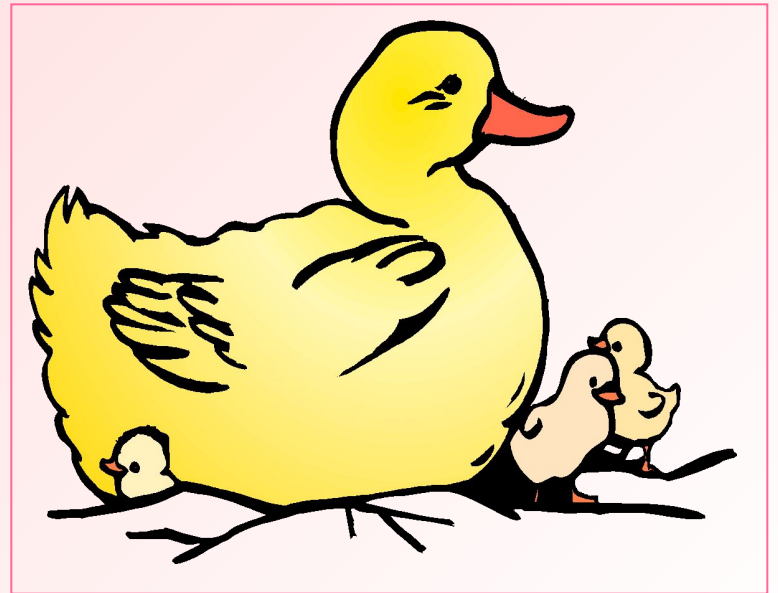
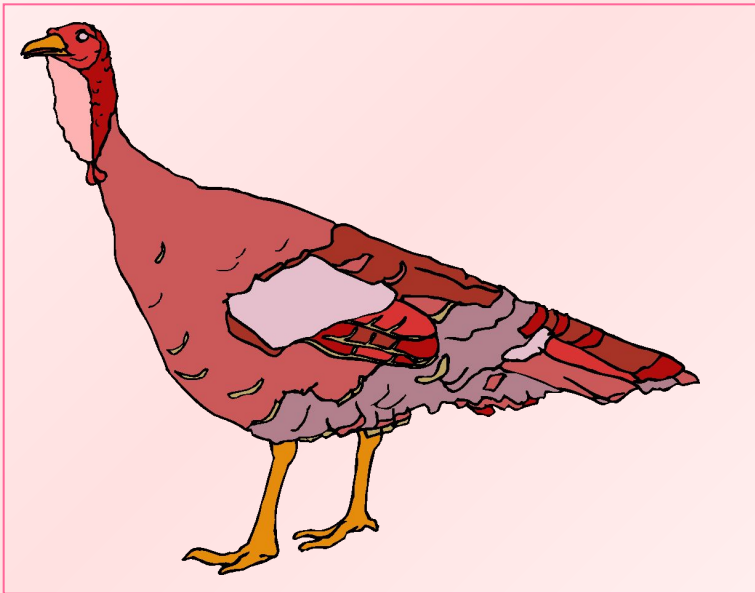
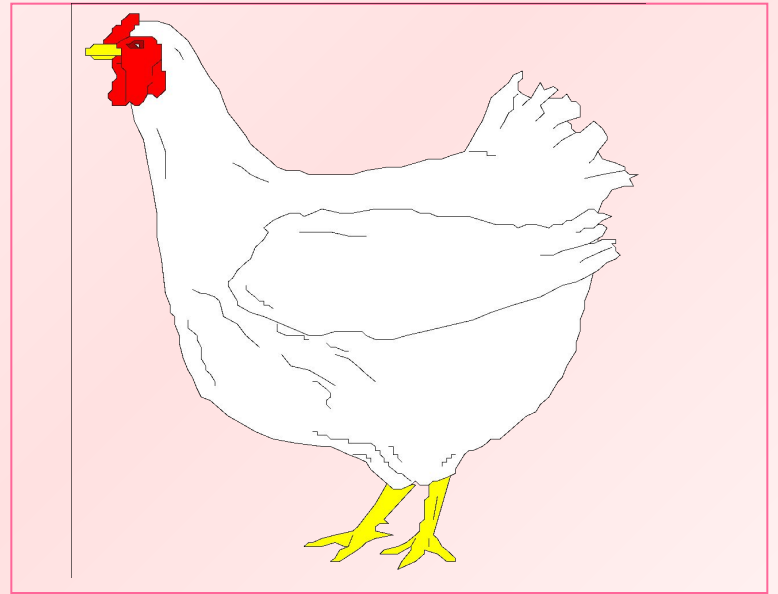
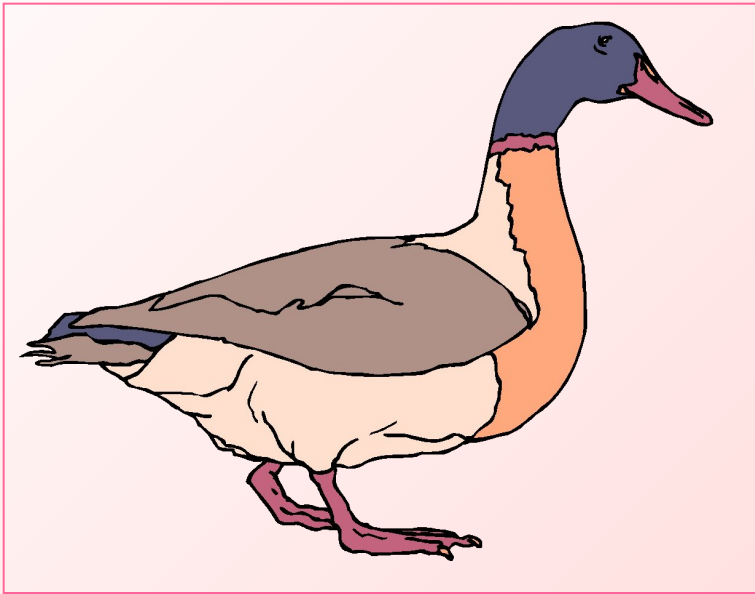
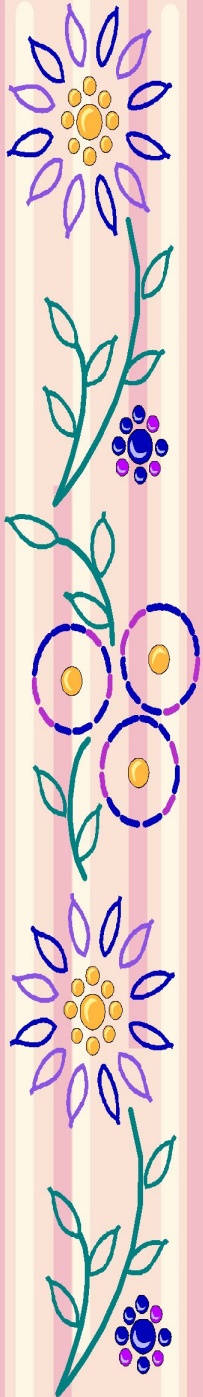


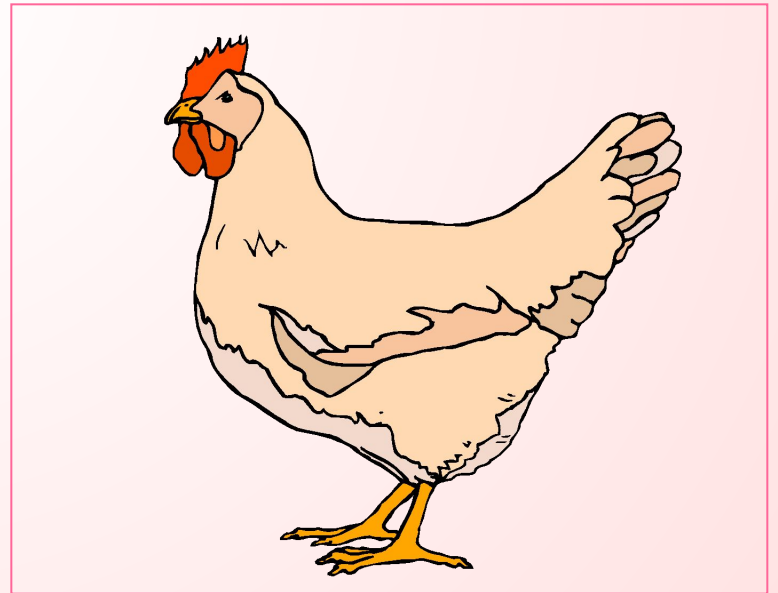
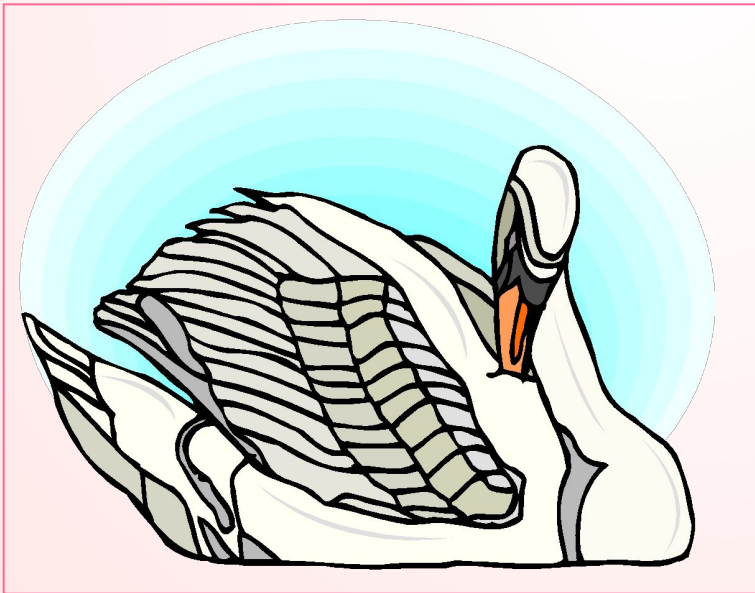
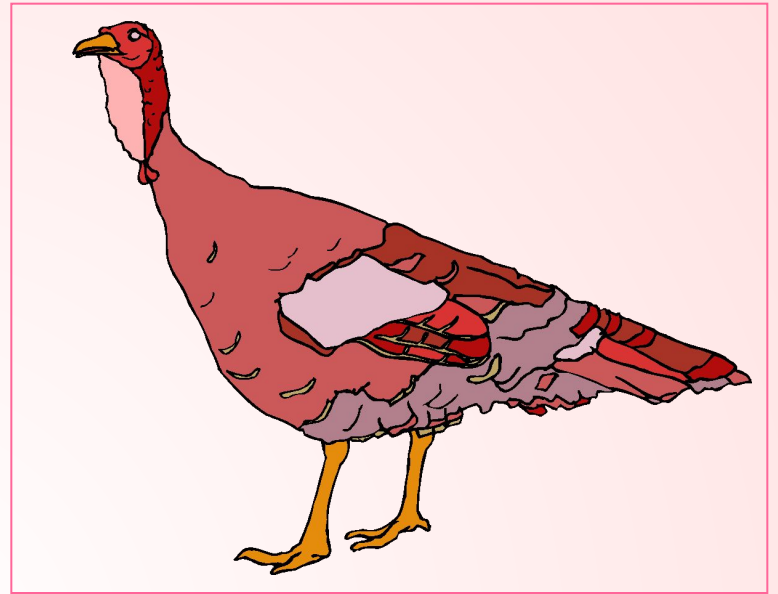
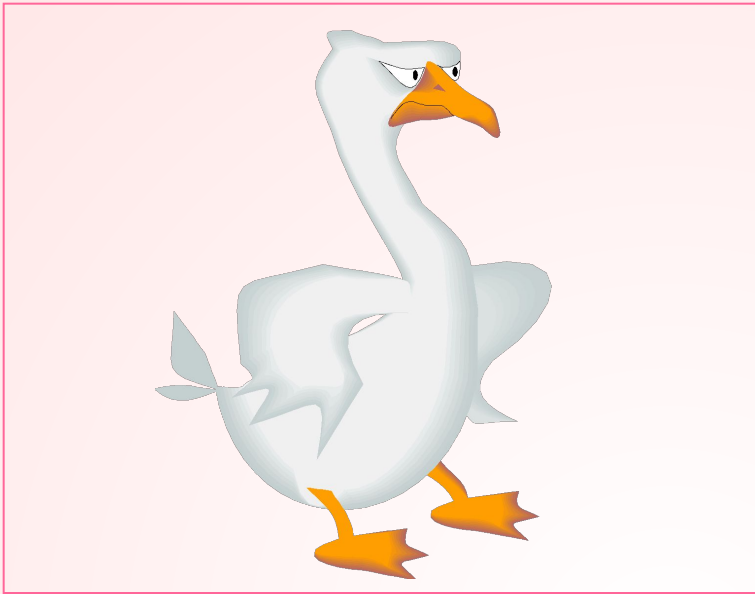
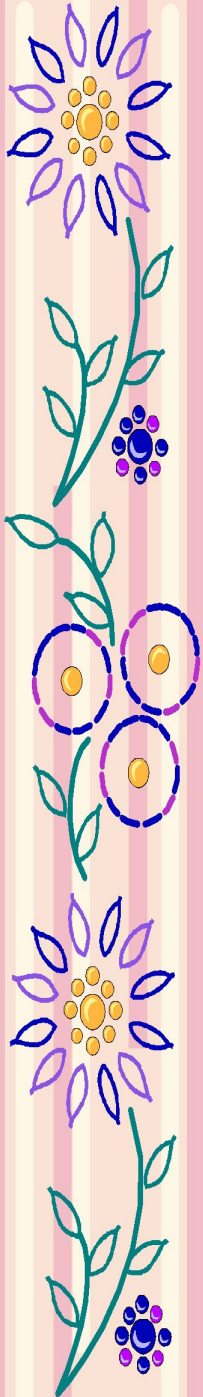


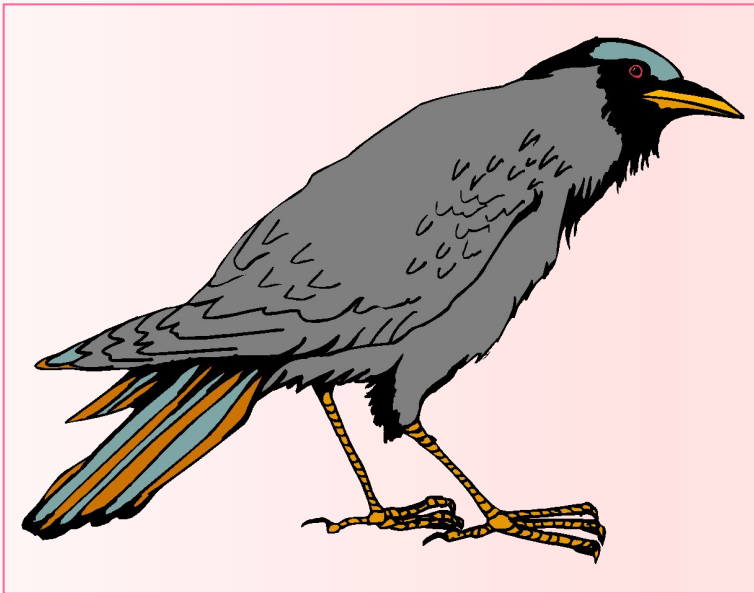
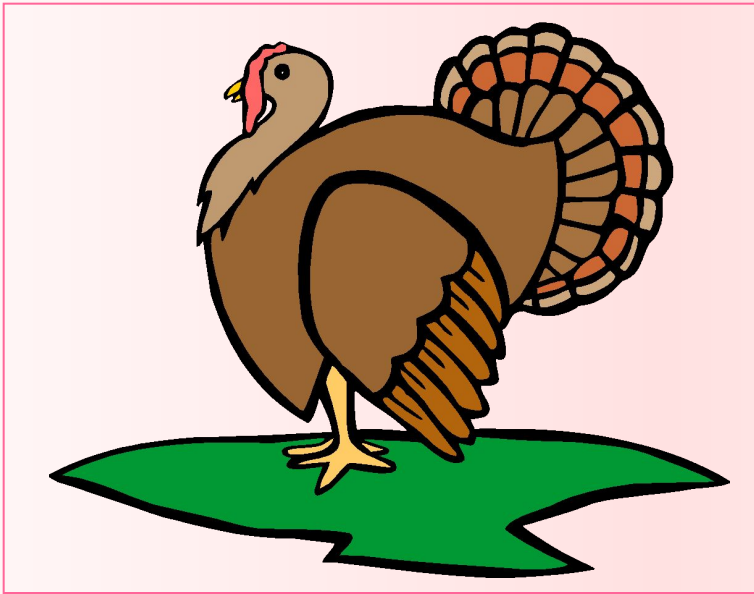
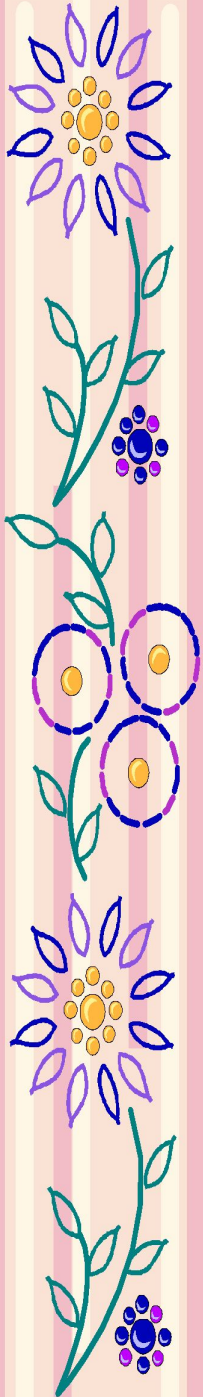


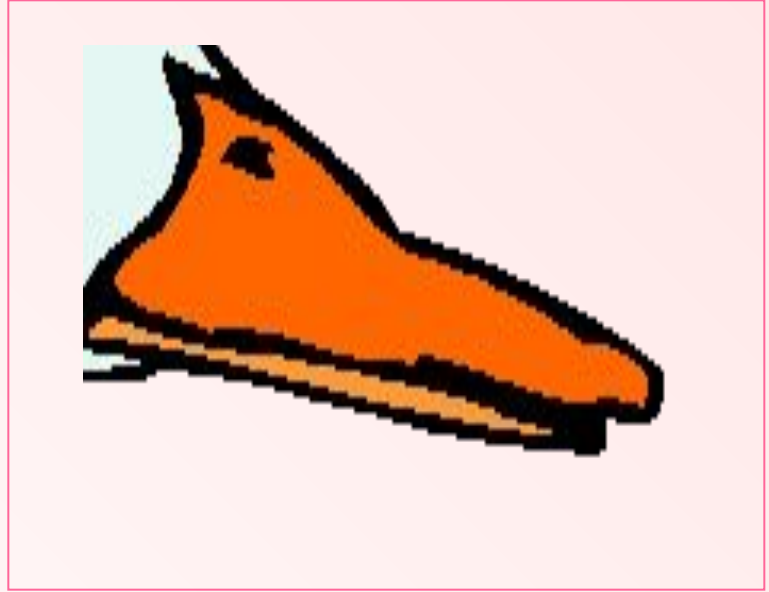
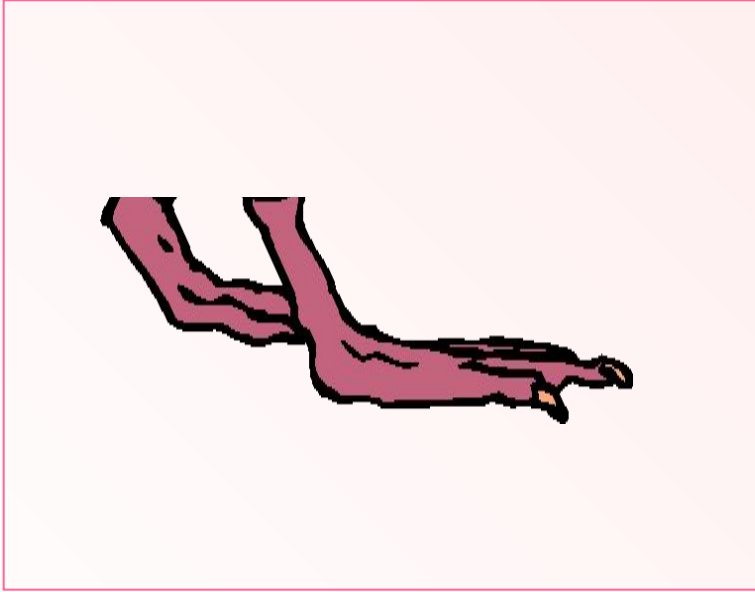
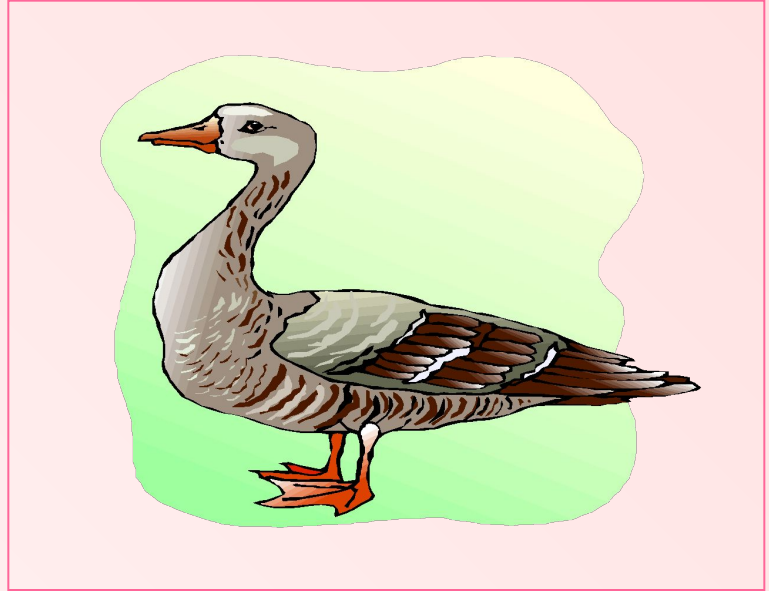
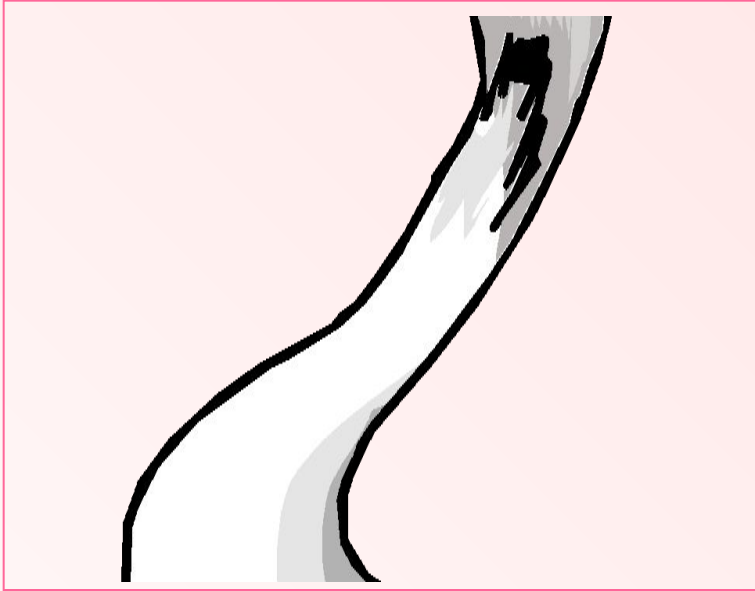
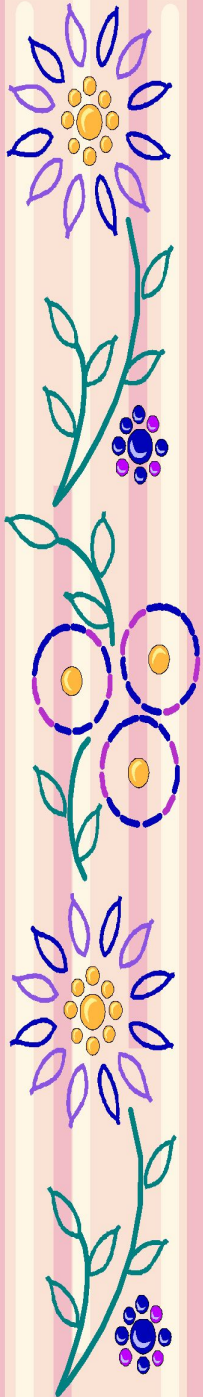


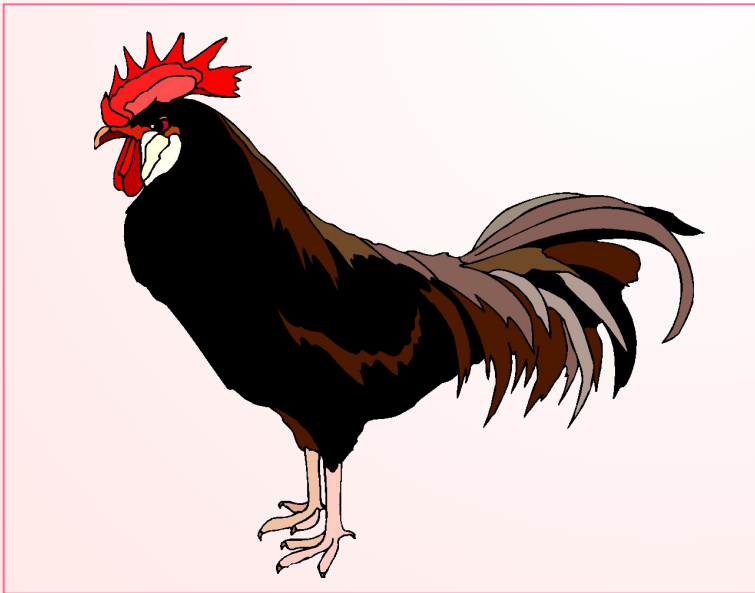
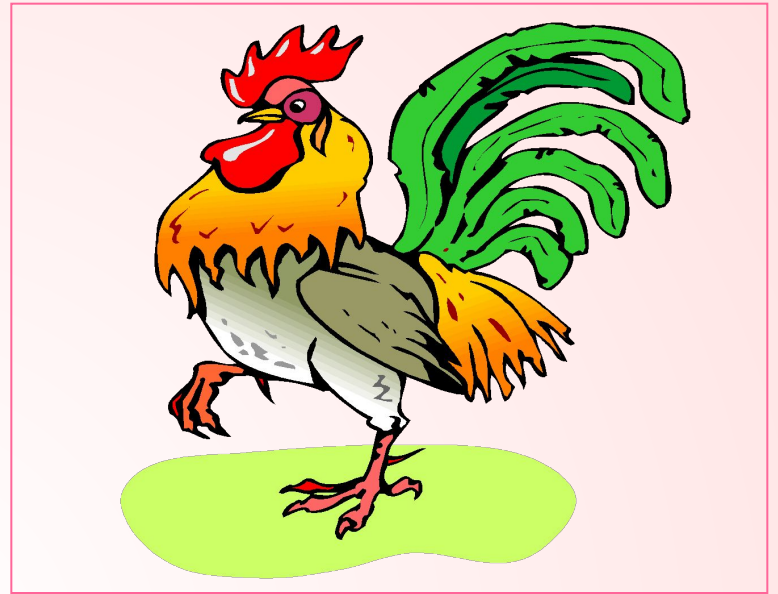
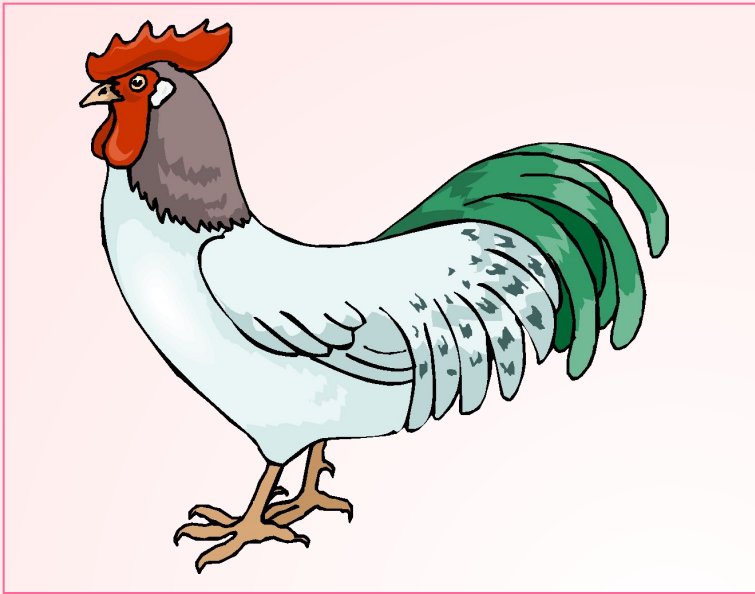
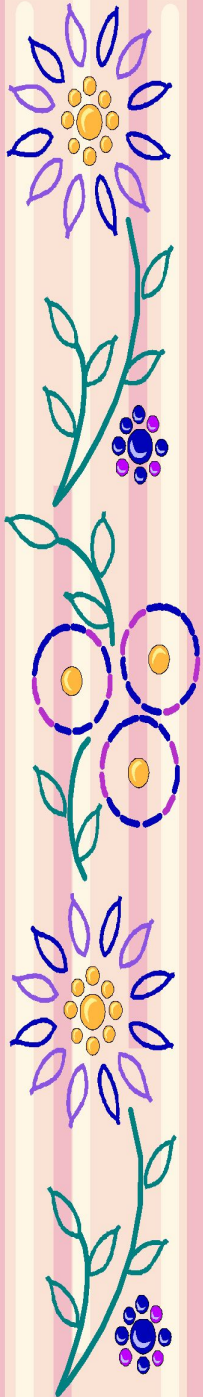




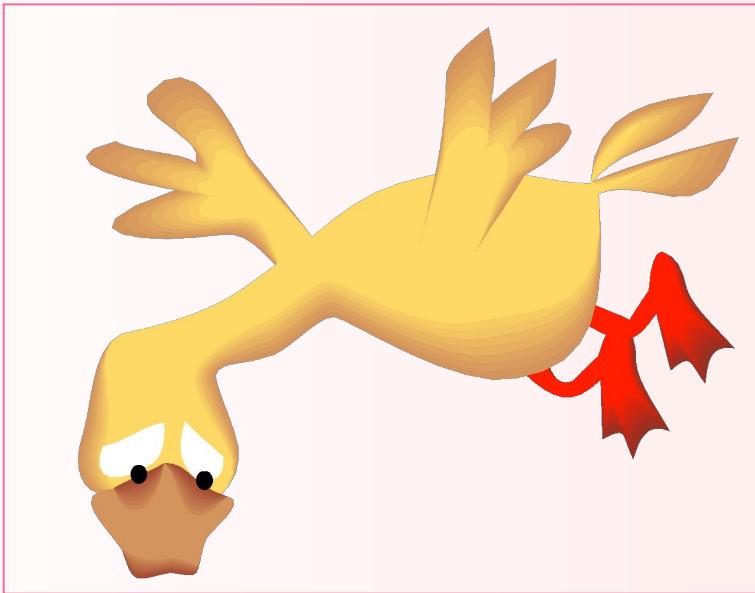
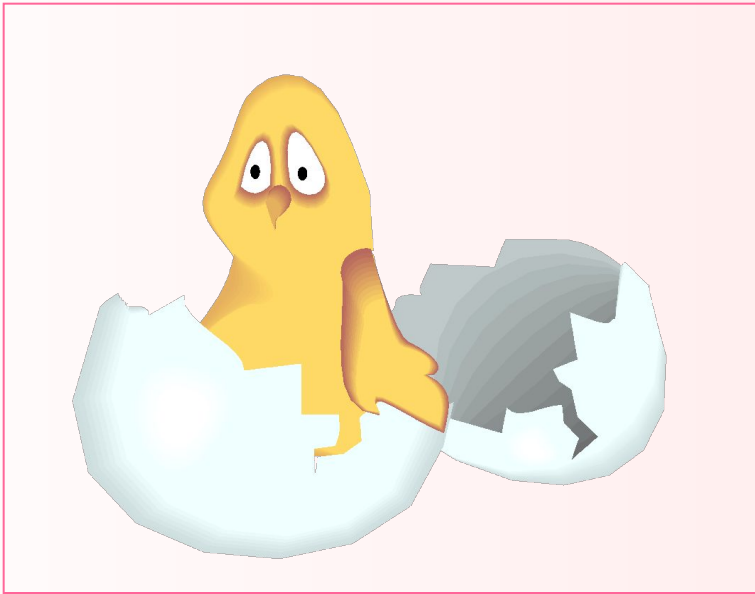
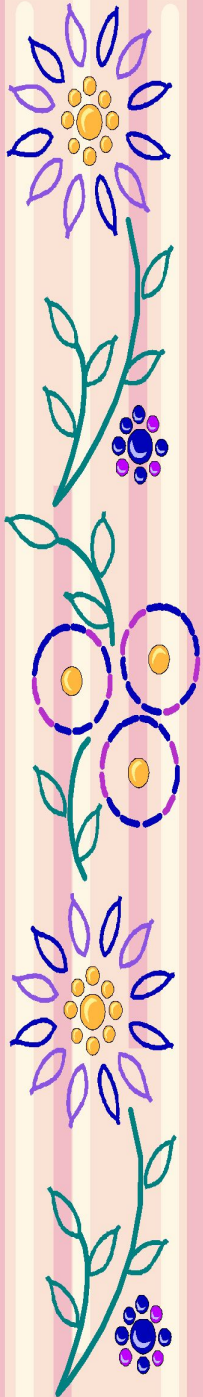


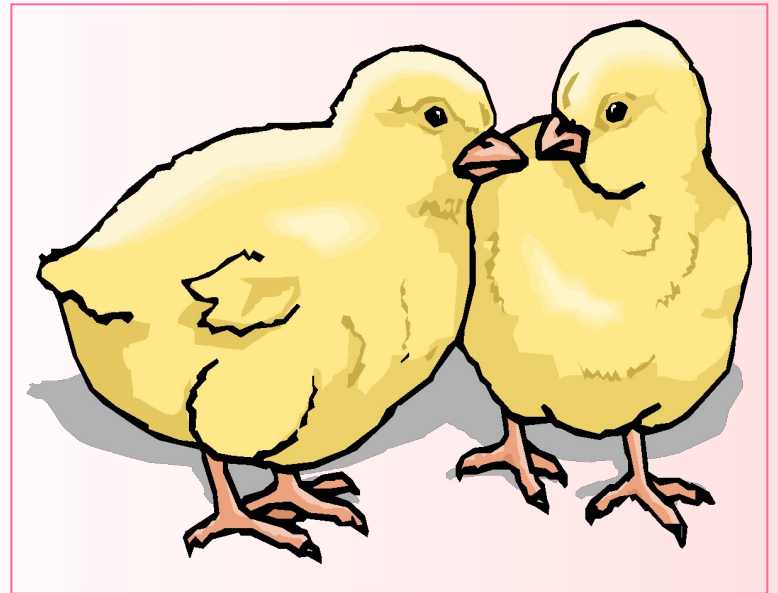
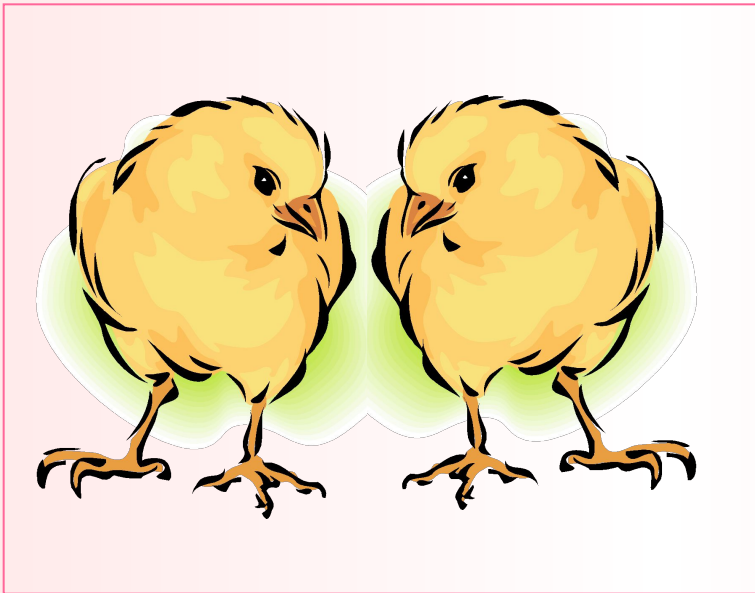
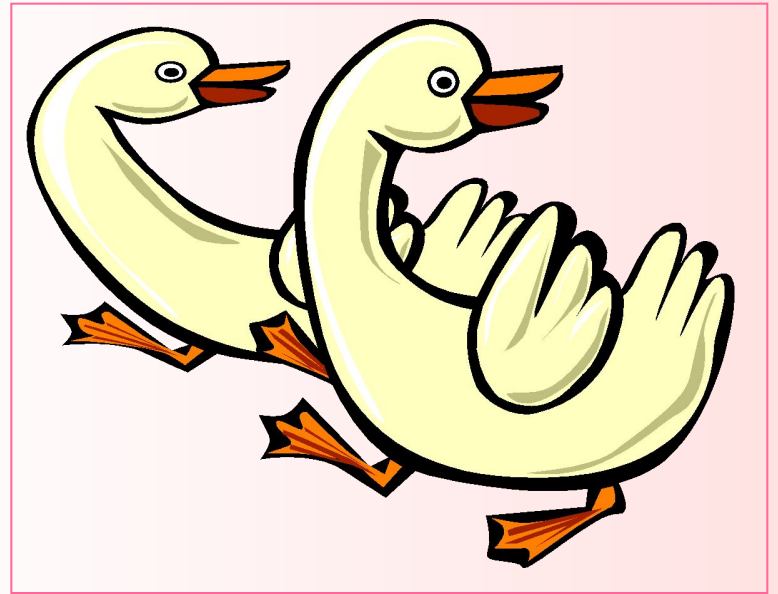
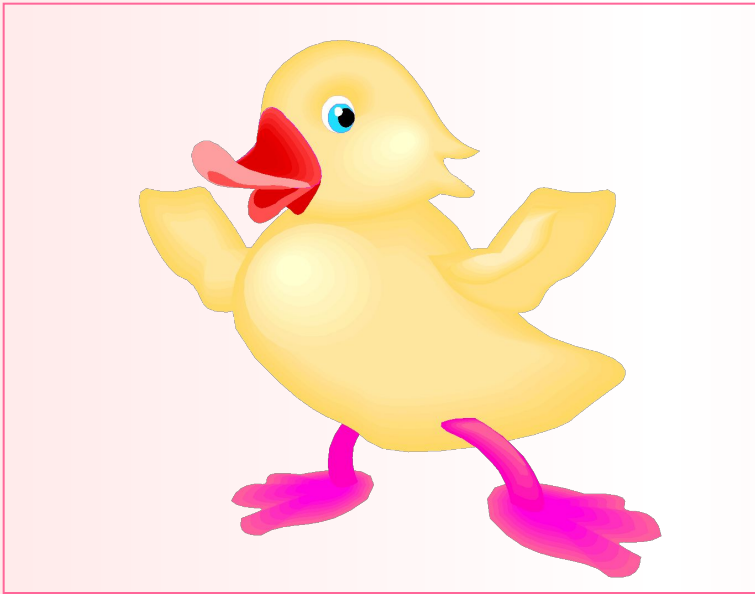
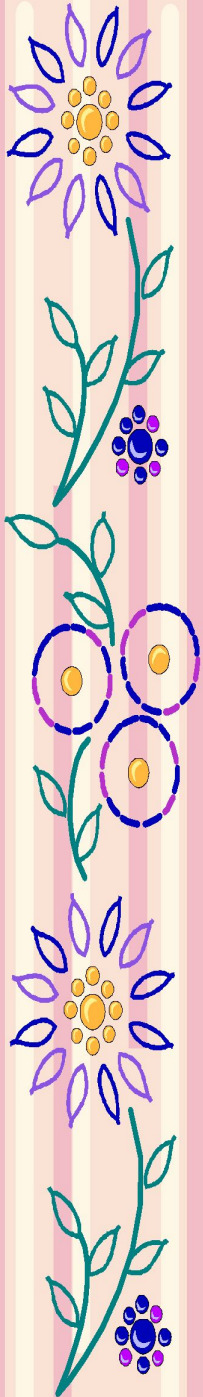












Молодец!

