

PROGAMA DE

Wizarding World of Harry Potter



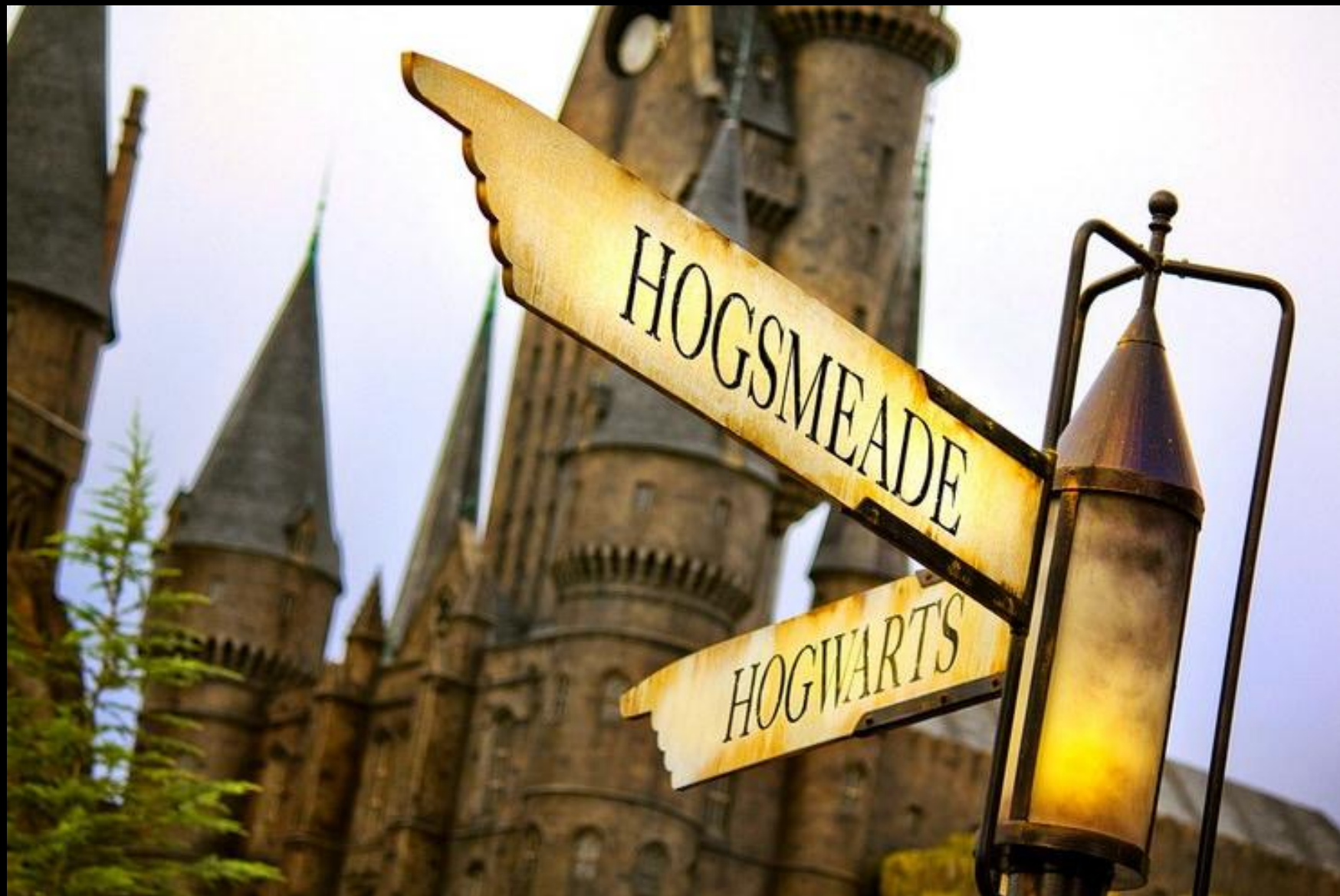


- Hogsmeade is a small village not far from Hogwarts, the only village in the UK where there are absolutely no Muggles. It was founded in the Middle Ages by Enghist of Woodcroft.



Any Hogwarts student, starting from the third year, is entitled to visit Hogsmeade 3-4 times a year, if the parents or guardian provide written permission to the school.







For example, in the third year on the initiative of Professor McGonagall this right until the end of the year lost Neville Dolpops, who lost by negligence a piece of paper with passwords from the portrait to the



opportunities, on the initiative of Professor Umbridge was extra Harry Potter, for in Hogsmeade gave an interview about the revival of Volan de Mort in the magazine "The Quibbler".





in the image students brought
themselves various sweets,
played games, snowballs and
other things.





The most popular institution in Hogsmeade is the "Sweet Kingdom", this is where all



"Three Broomsticks Inn"



popular inn and pub in the wizarding village of Hogsmeade and is often frequented by students from the neighbouring Hogwarts School of Witchcraft and Wizardry. The inn is often warm, crowded, and a bit smoky, but clean and welcoming. There drinks such as Butterbeer and Firewhiskey are served in glasses and in foaming pewter tankards, as well as gillywater, mulled mead, red currant rum,





Leaky Cauldron



The Leaky Cauldron was a popular wizarding pub and inn located in London.

The pub was built by Daisy Dodderidge, the first landlady, in the early 1500s "to serve as a gateway between the non-wizarding world and Diagon Alley "

It had a bar, several private parlour rooms, and a large dining room.

To Muggles, the pub appears to be a broken-down old shop front



In the village there is owl' post. In the world of Harry Potter it is a place of rest for owls after the delivery of letters.







The Hogwarts Express is the name of the train that makes a run between London, King's Cross Station Platform 9 $\frac{3}{4}$ and Hogsmeade Station. It makes this run at about six times a year, maybe more, as needed.



The Express dutifully carries students to and from Hogwarts School of Witchcraft and Wizardry at the start and end of every term.



Hogwarts Express



- ★ Zonko - magic tricks from Zonko.
- ★ "Pizarro's Feather Shop" - a store of writing materials.
- ★ "Sweet Kingdom" - a confectionery and a sweet store.
- ★ "Invisible Hat" - a clothing store for wizards.
- ★ "Music store Dominic Maestro" - a music store.

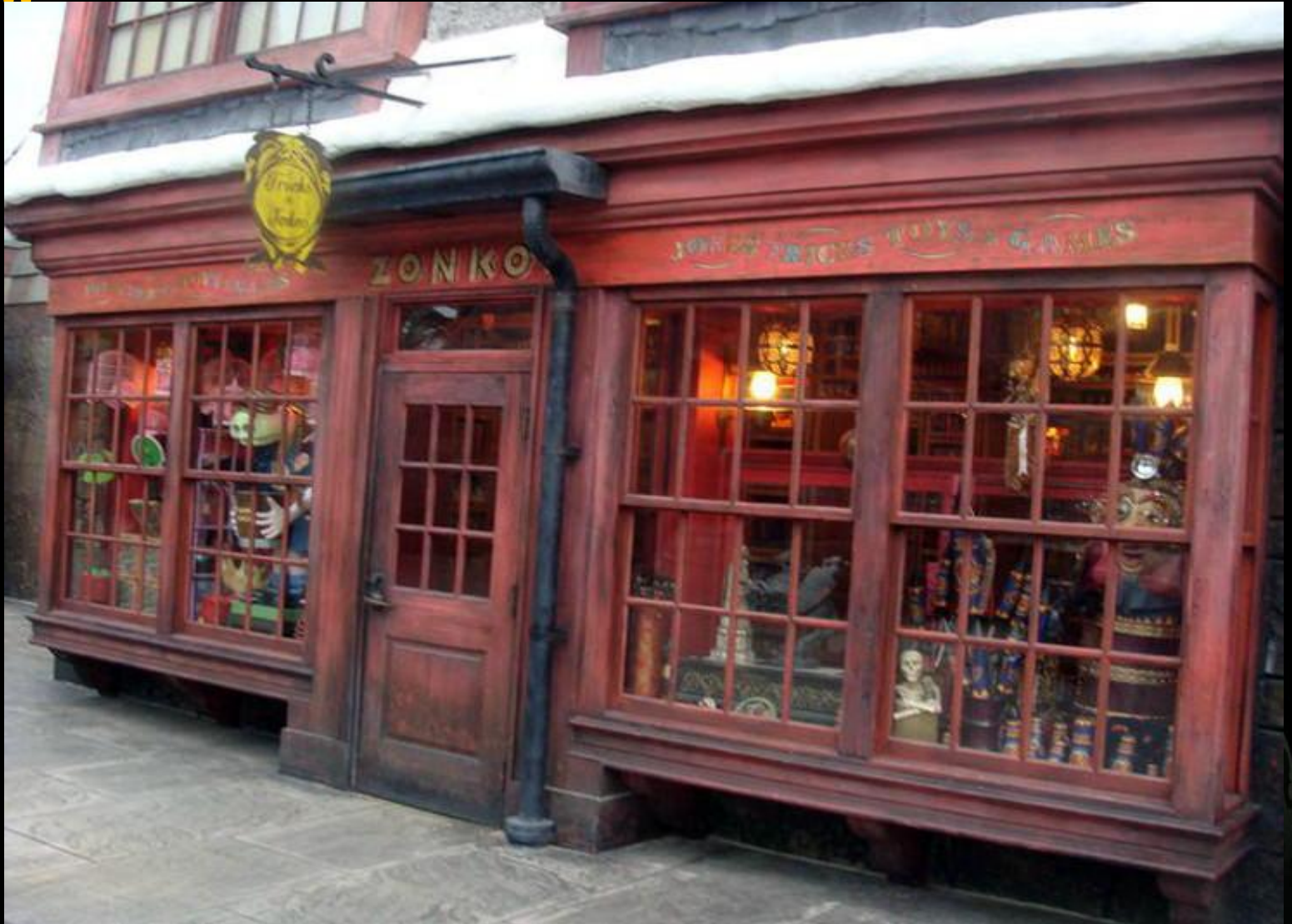


"Dervish and Bangs"





"Zonk
o"





"Sweet Kingdom"



Cafes and Bars:

★ "Hog's Head Inn" is a very old bar with a not very good reputation. Admission is for adults only.

★ Madame Paddyfoot's Cafe is a pretty romantic cafe. The exact name is unknown.

★ "Three Broomsticks Inn" - a cafe-bar for everyone.



Hog's





"Three Broomsticks Inn"



