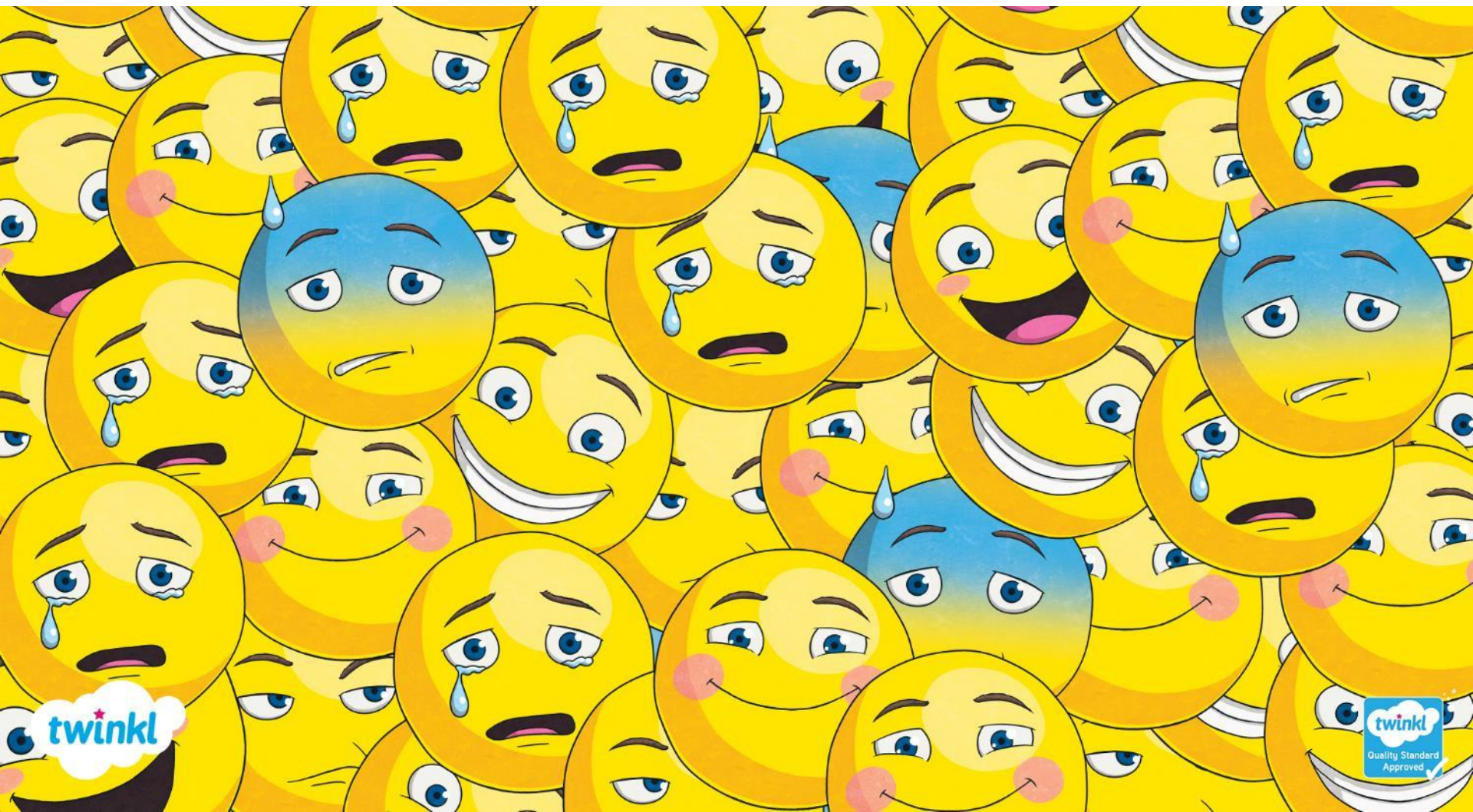




# Likes and dislikes Lesson



# Teacher instructions

1. Print and prepare the board game by sticking the two sides together.
2. Find dice! If you don't have any, you can use the paper dice template included.
3. There are signs for your learners to hold up. You can print ours or they can make their own.
4. There's audio on slide 9. Just give it a quick check to make sure it works!
5. Most things are editable, so feel free to make any changes you need. Remember you can get all the illustrations you need from [www.twinkl.co.uk/create](https://www.twinkl.co.uk/create)
6. Having issues? Remember to open PowerPoint (or the free WPS office suite), and operate in 'presentation' mode.

# Categories!

**Can you think of five...**



# What can you see in the

Click on the picture to reveal the word

pictures?



**Cat**



**Dog**



**Bird**



**Bee**



**Snake**



**Pizza**



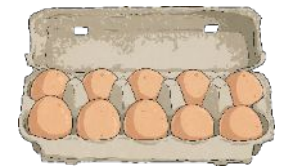
**Chocolate**



**Salad**



**Ice-cream**



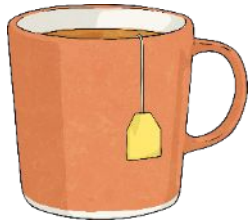
**Eggs**

# What can you see in the

Click on the picture to reveal the word



**Milk**



**Tea**



**Orange juice**



**Hot chocolate**



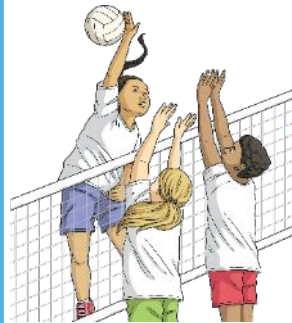
**Lemonade**



**Football**



**Basketball**



**Volleyball**



**Swimming**



**Running**

# Do you like dogs?



**Yes, I do.**



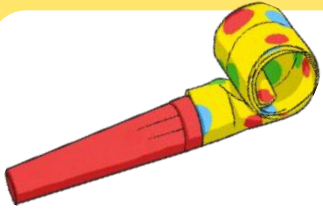
**No, I don't.**

**Listen and repeat. Clap the syllables.**



Game

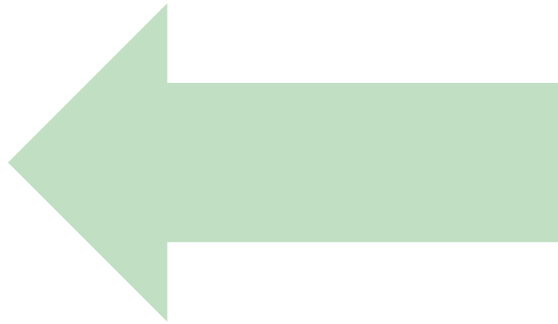
time!



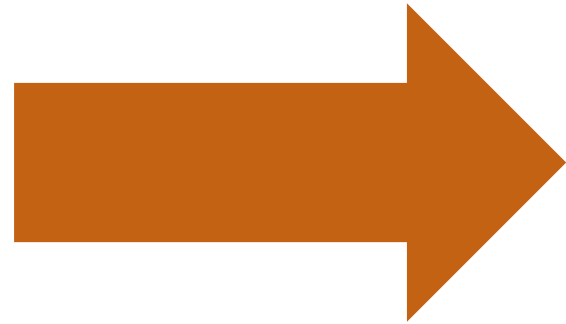
# Game time!



1. Stand in the middle of the classroom.
2. Listen to the question.



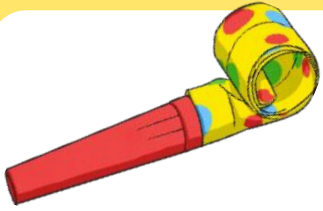
**Run here  
If your answer is  
'Yes, I do**



**Run here if your  
answer is  
'No I don't.'**

[Click here to start the game](#)





# Game time!



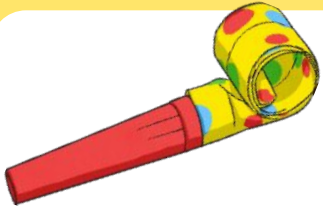
Click on a box to show a question



**'Yes, I do**



**'No I don't.'**



# Game time!



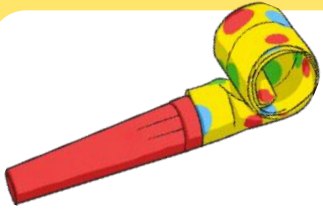
Click on a box to show a question



**'Yes, I do**



**'No I don't.'**



# Game time!



Click on a box to show a question



**'Yes, I do**

**imagination!)**

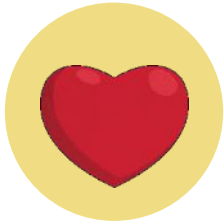


**'No I don't.'**

# Do you like dogs?



Yes I do. I \_\_\_\_\_ dogs.



Yes I do. I \_\_\_\_\_ dogs.



No I don't. I \_\_\_\_\_ dogs.



No I don't. I \_\_\_\_\_ dogs.

- don't like
- like
- hate
- love



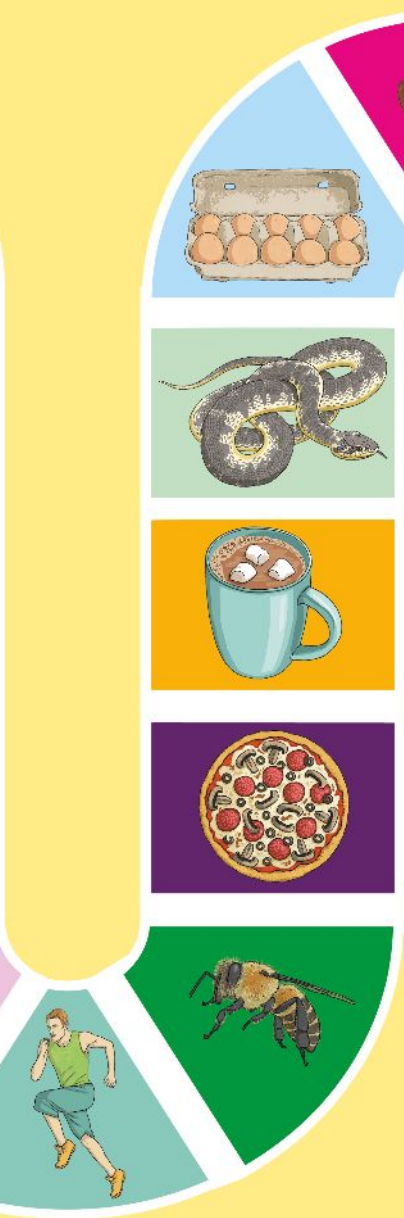
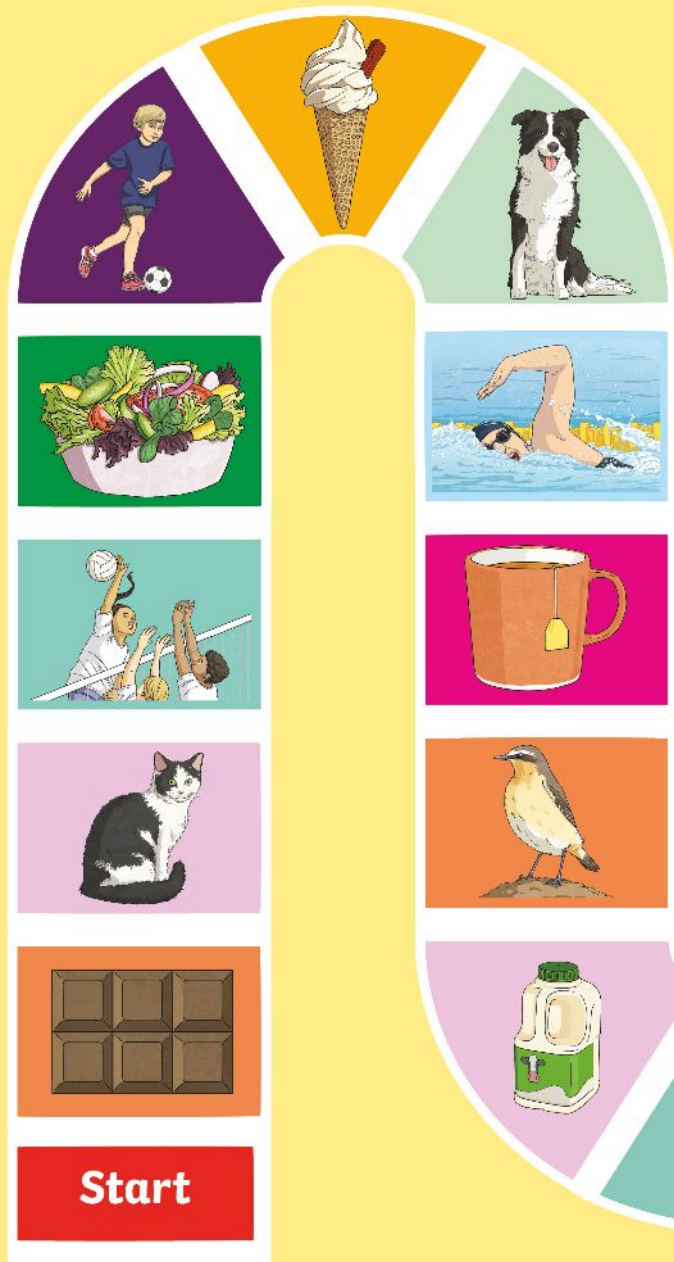
# Make four signs on paper. Listen and hold up the correct sign.

- 1 Do you like swimming? Yes, I do. I like swimming.
- 2 Do you like cats? No, I don't. I hate cats.
- 3 Do you like chocolate? Yes, I do. I love chocolate.
- 4 Do you like lemonade? No, I don't. I don't like lemonade.
- 5 Do you like volleyball? No, I don't. I don't like volleyball.
- 6 Do you like salad? No, I don't. I hate salad.
- 7 Do you like orange juice? Yes, I do. I love orange juice.
- 8 Do you like birds? Yes, I do. I love birds.

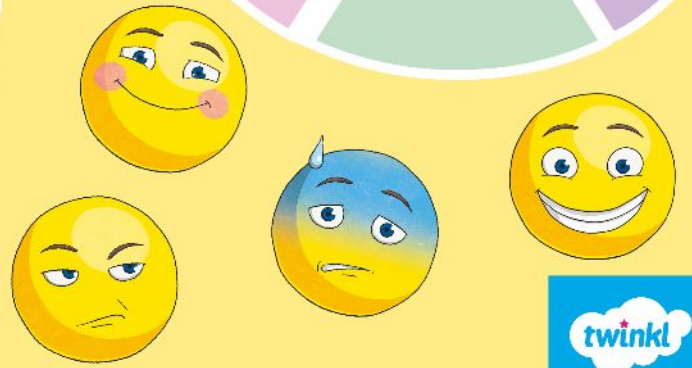


Game

time!



**Finish**



# Homework: Likes and Dislikes

1. Circle the answer that's true for you:



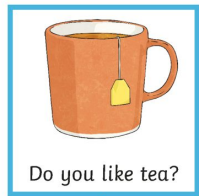
Yes, I do.    No, I don't



Yes, I do.    No, I don't



Yes, I do.    No, I don't



Yes, I do.    No, I don't



Yes, I do.    No, I don't



Yes, I do.    No, I don't

2. Complete the sentence with love/like/don't like/hate:

- A. I \_\_\_\_\_ running.    E. I \_\_\_\_\_ salad.  
B. I \_\_\_\_\_ football.    F. I \_\_\_\_\_ orange juice.  
C. I \_\_\_\_\_ milk.    G. I \_\_\_\_\_ birds.  
D. I \_\_\_\_\_ chocolate.    H. I \_\_\_\_\_ ice-cream.





# Hello Larry the Llama!

## Can you correct Larry's sentences?

1. You like dogs? 1. Do you like dogs?

2. Yes, I like. 2. Yes, I do.

3. I not like ice-cream. 3. I don't like ice-cream.

4. Cats I like. 4. I like cats.

5. Like you salad? 5. Do you like salad?

6. Do like you chocolate? 6. Do you like chocolate?

7. I no like tea. 7. I don't like tea.

8. I am love running. 8. I love running.

