

The Tower of London



By Nadya Vostrikova,
Zhenya Berezin and Vadim Minaev

School #1694, Moscow, Russia

Teacher: Elena Makhovikova

The Tower of London



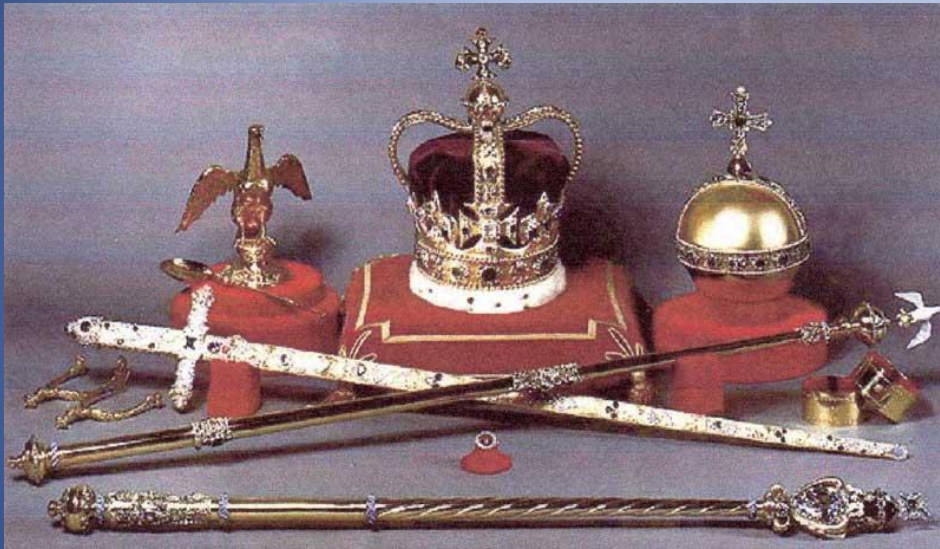
The Tower of London dates back to 1078, though the main building has been added to over the centuries. The Tower has been used as a royal palace, a zoo, a mint (where money is made), a weapons store and a prison.

The White Tower

The White Tower is the oldest building on the Tower site. It is over 900 years old. It got its name in the thirteenth century when it was painted with whitewash.



The Crown Jewels



The Crown Jewels are kept at the Tower. They include Saint Edward's crown used to crown a new king or queen, and the orb and sceptre the new monarch holds during the ceremony.

The Crown Jewels

They are well looked after. Once they were stolen by a man called Colonel Blood. But he was caught just as he was leaving the Tower. Thomas Blood didn't have to go to prison. The king gave him a pension instead.



The Tower Armoury



The Tower Armoury was used to store suits of armour and weapons. You can still see suits of armour on display. Some of the armour was made for King Henry VIII over 400 years ago.



Traitors' Gate



Traitors' Gate leads into the Tower from the river. It got its name because many prisoners brought it were accused of being traitors. Few of them left the Tower alive.

The Beefeaters



The Beefeaters used to guard the Tower and its prisoners.

Today, they work mostly as guides. They show people around and tell stories about all the terrible things that have happened here.

No one knows more about the history and secrets of the Tower than these famous men.

The Beefeaters

When they are guiding, they wear dark blue uniforms.

On state occasions they wear red and gold tunics designed for them during the reign of Queen Elizabeth.



Ravens



There have always been ravens at the Tower.

The first ones probably built their nests here because they liked the old stone houses and walls. A group of six ravens lives in the Tower.

Ravens

There is a story that they bring good luck to Britain, if they stay at the Tower. That's why they get meat and biscuits every day. But their wings are clipped so that they can't fly away. They are not very friendly. Once one of them bit a German minister.



The Ceremony of the Keys

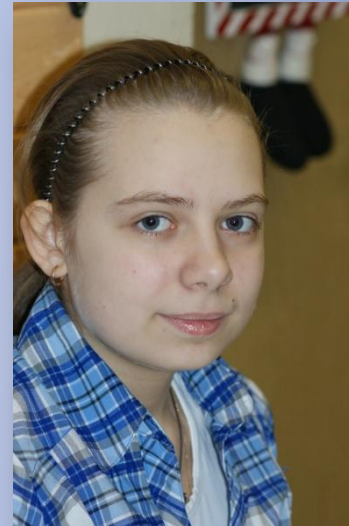


"Halt! Who goes there?"
"The Keys."
"Whose Keys?"
"Queen Elizabeth's Keys."
"God preserve Queen Elizabeth."
"Amen!"

These words can be heard every night just before 10 o'clock. They mean that the Tower of London has been locked up for the night. The Ceremony of the Keys is at least 700 years old!

Bibliography and Authors:

- 1) Ч. Диккенс." История Англии для детей."- A Child's History of England. М.: "Издательство АСТ", 2002 г.
- 2) Азимов А."История Англии. От ледникового периода до Великой хартии вольностей», М.: ЗАО Центрополиграф, 2004 г.
- 3) Ю. Е. Ваулина, Дж. Дули, и др. Английский язык. 7 класс : учеб. для общеобразовательных учреждений .М.: Express Publishing : Просвещение, 2010 г.
- 4) R. Dickins "London Sticker Book." Usborne Publishing Ltd., 2006 .
- 5) 5) Vaughan-Rees M. In Britain., Chancerel International Publishers Ltd., Titul Publishers, 1999.
- 6) «Шляпа» №4, 2004, «Глосса Пресс».
- 7) «Speak Out» №2, 2003, «Глосса-Пресс».
- 8) «Let's go to London», «Speak Out», «Глосса-Пресс», ISBN 5-7651-0083-X



Nadya Vostrikova



Vadim Minaev



Zhenya Berezin

The Tower of London



*It was done by the pupils of the 5 G form
Nelaev A., Bagay I., Zelenskiy D., Solovchuk M.,
Teacher: Fedorenko O.V.*

The Tower
is very
old. It is
not just
one
building.



It has a long and cruel history . The bloody Tower has history of blood.



Tower is very beautiful . But now King and the Queen do not live in the Tower .



The tall building is the White Tower, the oldest part of the Tower of London. The Bloody Tower is near the river.



The end !!!



THE TOWER OF LONDON



The Tower of London is a historic monument in central London. It's situated near the river Thames and the Tower of Bridge. The Tower of London consists of the White Tower (the oldest part), Waterloo barracks(Crown Jewels), Site of Scaffold, Tower green (there was a collection of wild animals), Bloody tower (prison) and Traitor's Gate.



The Traitor's gate



The White Tower and courtyard

The Tower has a very interesting story. It was begun by a man who wasn't even Englishman, William the Conqueror of Normandy in the 11th century. He was the cousin of England's King Edward.



William I

The Tower served till the 16th century as a royal home, an execution site, a royal mint, an observatory and a prison. There many famous prisoners were kept for example queen Ann Boleyn, queen Elizabeth I., philosopher Thomas More and Hitler's deputy – Rudolf Hess. He was the last state prisoner to be hold in the Tower, in May 1941. A Royal Menagerie was established at the Tower in the 13th century during the reign of King John. It was opened as an occasional public spectaclen in the reign of Elizabeth I. By 1804 the menagorie was open to the public.



The Bloody Tower

Eight ravens are kept in the Tower to protect the whole the Kingdom. The legend says that the Kingdom will cease to exist when the ravens leave the Tower. The oldest raven was Jim Crow and died when he had 44 years old.



A Raven of Tower green



A Tower raven

Nowdays it is a museum where tourists go to see an arsenal of weapon and the Crown Jewels in the Jewel House. The Tower is guarded by the Yeomen Warders.



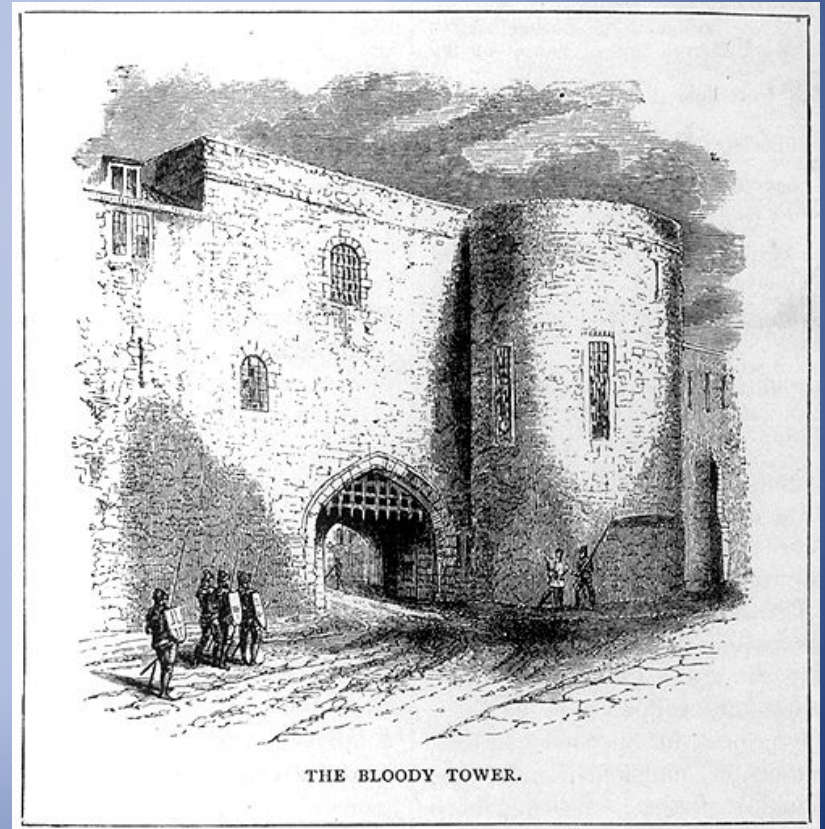
The Yeomen Warders



The Crown Jewels



Reconstruction of the interior of
the Bloody Tower





The Tower of London



*It was done by the pupils of the 5 G form
Nelaev A., Bagay I., Zelenskiy D., Solovchuk M.,
Teacher: Fedorenko O.V.*

The Tower
is very
old. It is
not just
one
building.



It has a long and cruel history . The bloody Tower has history of blood.



Tower is very beautiful . But now King and the Queen do not live in the Tower .



The tall building is the White Tower, the oldest part of the Tower of London. The Bloody Tower is near the river.



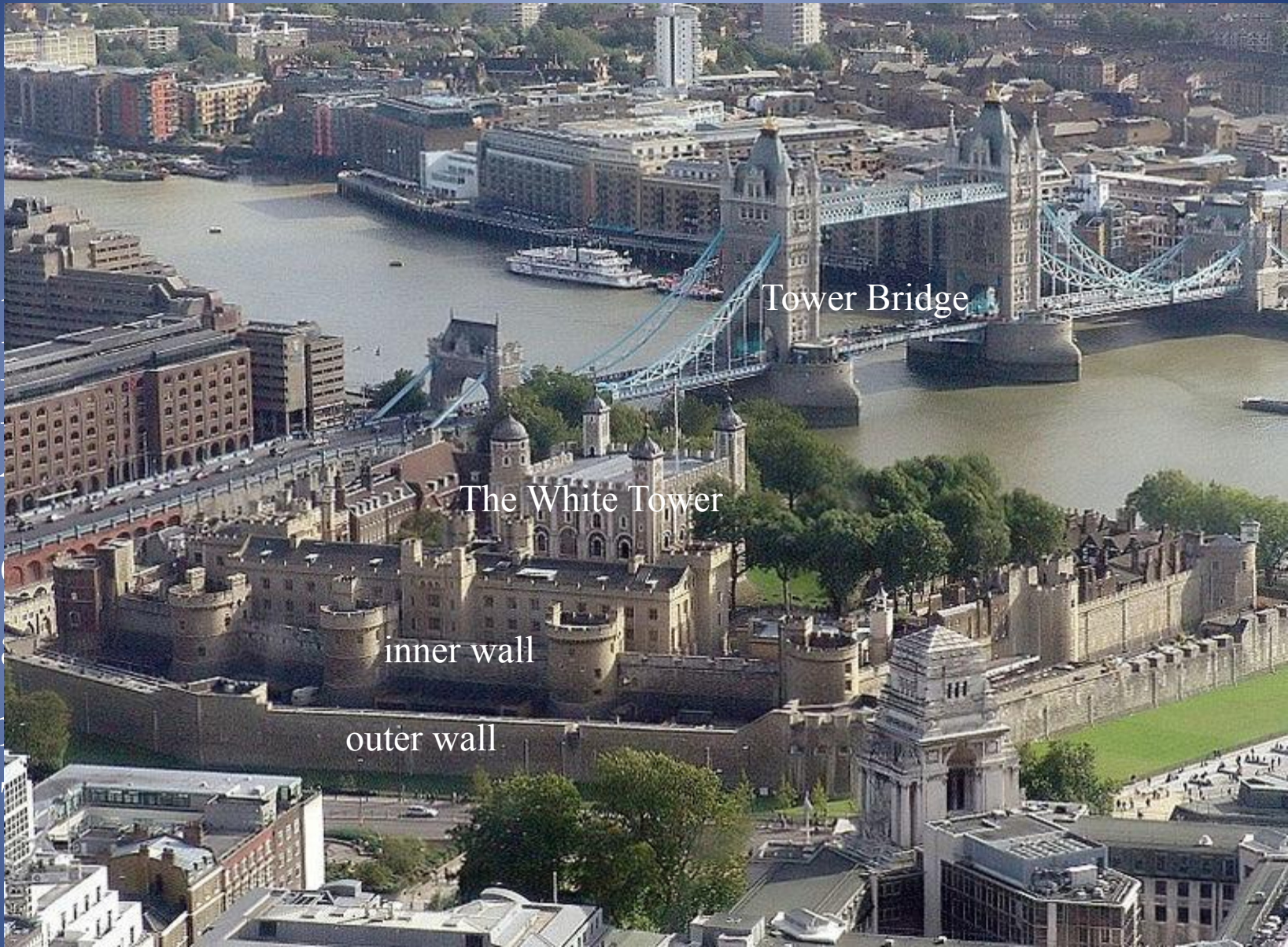
The end !!!



The Tower of London

Julia Bitner

Lasnamäe Gümnaasium



Tower Bridge

The White Tower

inner wall

outer wall

History

In 1078, William the Conqueror built the first part of the Tower, the White Tower, as a fortress. Over the centuries, other kings and queens built smaller towers and walls around it. They used the Tower as a palace or prison, surrounded by massive defensive walls. Prisoners usually arrived by boat.





Several kings and famous people were killed in the Tower of London, among them two wives of Henry VIII. Two little princes, Edward and his brother Richard, disappeared in the Tower Elizabeth I was held prisoner in the Tower for two months by the order of her half sister, Queen Mary.

Guards

- Yeoman Warders
- Beefeaters
- They are known for their uniforms.
- Beefeaters used to guard the Tower and its prison. Today, they work mostly as guides.



The Ceremony of the Keys

Every night for the last 700 years the Tower has been locked up in the Ceremony of the Keys. At 9:53 p. m. the Chief Warden of the Tower goes with his Escort to lock the gates. When they return to the Bloody Tower, they are stopped and asked:

"Who goes there?"

"The Keys."

"Whose Keys?"

"Queen Elizabeth's Keys."

"Pass Queen Elizabeth's Keys. All's well."



The Legend of The Ravens



Beefeaters are also responsible for the Tower's ravens - black birds which must always live in the fortress on the banks of the Thames. The legend says that if the ravens ever leave the Tower, it will fall and the Kingdom will fall too.



The Crown Jewels



The Crown Jewels are kept in the Tower of London, in the Jewel House.

Tower Bridge



Tower Bridge is the most famous bridge in London. It was opened in 1894.

Fill in: is, are, was, were

1. The Tower of London^{is} located in the East End of London.
2. It^{is} known as a famous landmark, museum and fortress.
3. The Crown Jewels^{are} housed there.
4. The oldest building, the White Tower,^{was} built by William the Conqueror in the 11th century.
5. The Tower of London^{was} used as a prison for many years.
6. Many people^{were} executed in the Tower.
7. The Tower^{is} guarded by the Yeoman Warders.
8. They^{are} also called Beefeaters.

The Tower of London

- The history.
- The making of the Tower.
- The Legends.
- The Crown Jewels.

Done by:

Anna loudovskaya and Katie Miller

Building the White Tower



The White Tower was built in 1078 by William of Normandy, who is also known as William the Conqueror.

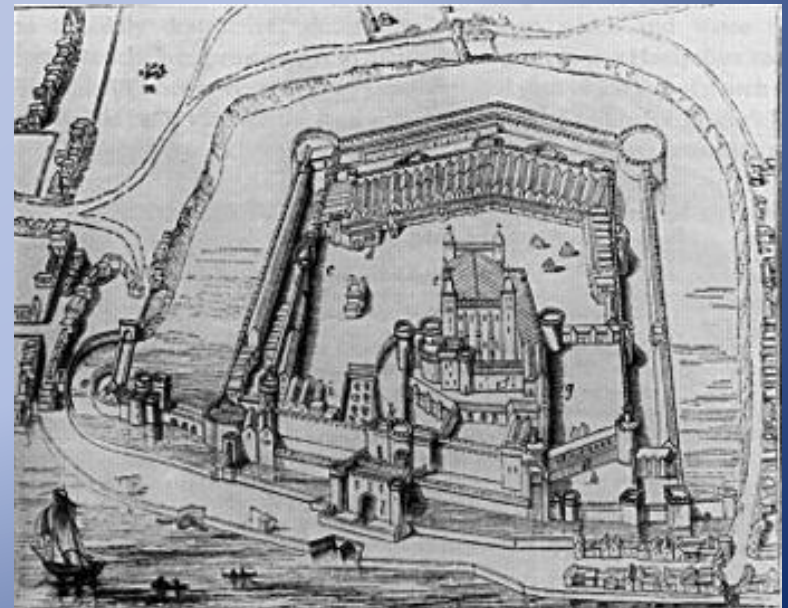
- The Tower of London is the symbol of his power.**
- The limestone came from Caen and the rag stone was brought from Kent.**
- The White Tower's dimensions are 11ft x 107 ft.**
- It took 20 years to build because**

The area near the Tower of London

As different kings and queens ruled England, they each added a certain building to the Tower. Henry III was the one to make the White Tower cozy.

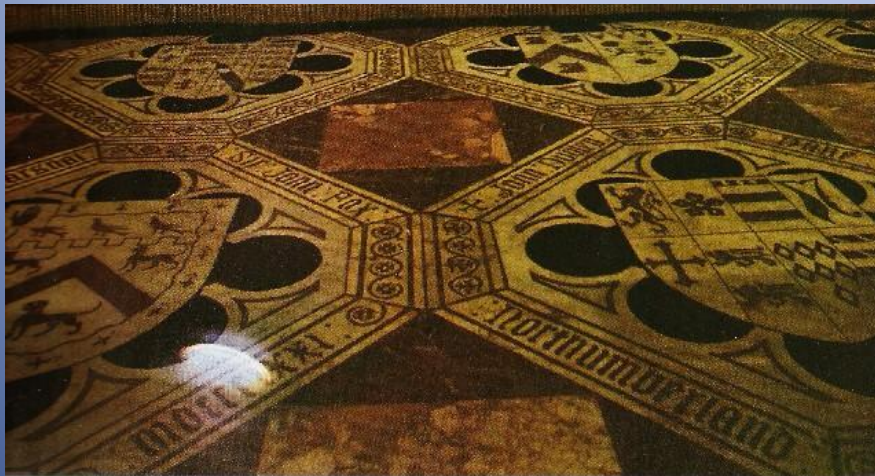
After wards the Lion Tower was added, where lions were kept for entertainment.

These are bird's eye views of the *Tower of London* area.



What does the Tower represent?

- Symbol of power.
- Fortress for defense.
- Prison for enemies.
- Hideout from angry citizens.



Floor of the
Norman
Chapel – the
oldest church
in all of
England

The Yeoman Warders



When King Henry VII was at the throne, he formed a personal bodyguard to protect him. His guards were called the Yeoman Warders who still protect the Tower today.

In this photo the Yeoman Warder is entering the gates to open the Tower for the day.

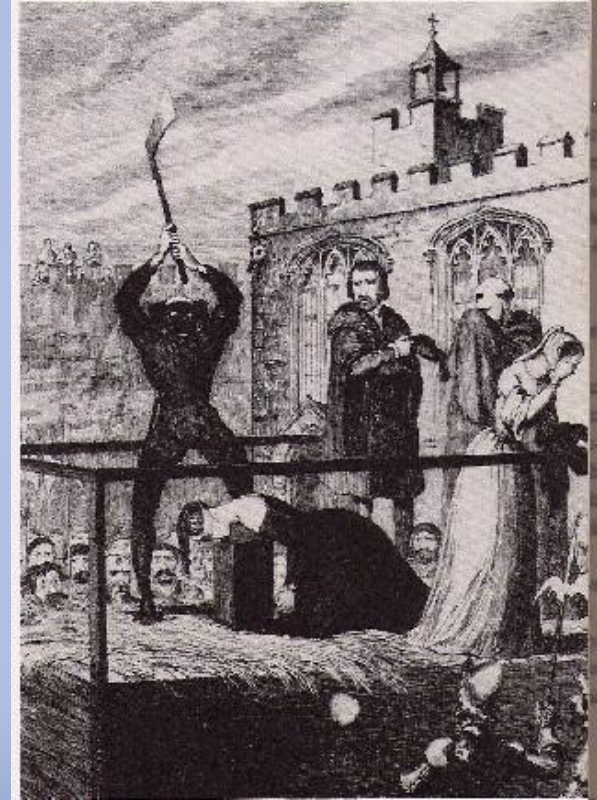
At night the tower is locked up at 10:00pm sharp.

Prisoners at the Tower of London



The people executed or imprisoned at the Tower were:

- Queen Elizabeth I – she is known to be the only one who left the tower unexecuted.
- Anne Boleyn – she was murdered because Henry VIII was unsatisfied with the fact that she couldn't give him a son.
- Sir Thomas More
- Lady Jane Grey



Here is an example of what an execution might have looked like.

The Bloody Tower



This is the Bloody Tower, formerly known as the Garden Tower.



A number of people were imprisoned at the Bloody Tower, one of them happens to be Sir Walter Raleigh who wrote *History of the World* while being imprisoned

Legends: Pt 1

The most famous legend is the one about two boys: Richard Duke of York and his brother Edward V.



- According to Tudor historians, Richard, Duke of Gloucester invented a story declaring the boys illegitimate and convinced the Parliament that they can't become kings. Then he murdered the boys.
 - They believe this because they think one of Richard's former officials confessed 20 years after the crime was committed. Young skeleton bones were found under some stairs in the tower in the 17th century, so it is assumed that those are the bones of the two boys.
- Those young boys were Richard, Duke of York and his brother Edward V. Edward was placed there to be named king because Richard III's brother passed away.

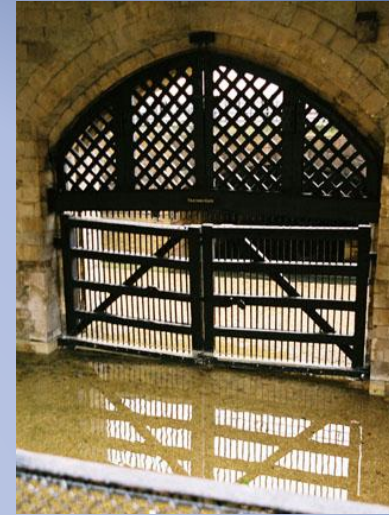


Here is a photo of Richard, Duke of Gloucester, who was later crowned as Richard III.

Legends:Pt 2

The most interesting of all legends involves the 6 ravens living inside the Tower.

There is a belief that if they ever leave the Tower, it will crumble and the British Monarchy will fall apart. This may sound ridiculous, but it could be true because the ravens weren't at the castle during WWI or WWII.



Another interesting legend concerns Queen Elizabeth I: she was disappointed when told that she would be entering through Traitor's Gate because she didn't think of herself as a "traitor".

Nonetheless, she was forced to enter through it because as legend has it, a heavy downpour started.

Photo of Queen
Mother's crown

CROWN JEWELS



Historical facts of the
Crown jewels



- Used today in Coronations & other ceremonies.
- Been used by other English kings & queens since 1660 or earlier.
- Held as national heritage by The Queen as Sovereign.

Crown Jewels



Collection includes regalia (items used at a coronation) other crowns & pieces donated by various sovereigns, church and banqueting plate, orders, insignia, robes, a unique collection of medals and royal christening Edward the Confessor (reigned 1042-1066) placed his Royal ornaments in the Westminster Abbey for safe keeping, Cromwell ordered that the regalia "be totally broken" because it was symbolic of the "detestable rule of kings"

Different crowns for different members of the Royal Family



Queen Elizabeth's crown
Crown of Imperial State



Edward's crown